

BALDOR • RELIANCE

Customer information packet

EL11318M

1HP, 1755RPM, 1PH, 60HZ, 56H, 3528LC, OPEN, F1

Class - None

Division - Not Applicable

Specifications

Enclosure	OPEN
Frame	56H
Frame Material	Steel
Frequency	60.00 Hz
Haz Area Class and Group	None
Haz Area Division	Not Applicable
Motor Letter Type	Cap Start, Cap Run
Output @ Frequency	1.000 HP @ 60 HZ
Phase	1
Synchronous Speed @ Frequency	1800 RPM @ 60 HZ
Voltage @ Frequency	115.0 V @ 60 HZ 230.0 V @ 60 HZ
Agency Approvals	CURUSEEV
Ambient Temperature	40 °C
Auxillary Box	No Auxillary Box
Auxillary Box Lead Termination	None
Base Indicator	Rigid
Bearing Grease Type	Polyrex EM (-20F +300F)
Blower	None
Current @ Voltage	4.500 A @ 230.0 V 9.000 A @ 115.0 V
Design Code	L
Drip Cover	No Drip Cover
Duty Rating	CONT
Efficiency @ 100% Load	82.6 %
Electrically Isolated Bearing	Not Electrically Isolated
Feedback Device	NO FEEDBACK
Front Face Code	Standard
Front Shaft Indicator	None
Heater Indicator	No Heater
High Voltage Full Load Amps	4.5 a
Insulation Class	F

Part detail

Revision	E
Type	AC
Mech. spec.	35E007
Base	
Status	PRD/A
Elec. spec.	35WGL164
Layout	35LYE007
Eff. date	04-29-2024
CD Diagram	CD0320
Poles	04
Leads	6#18,1#16 #4TH
Proprietary	False
Created date	10-01-2014

Inverter Code	Not Inverter
KVA Code	L
Lifting Lugs	No Lifting Lugs
Locked Bearing Indicator	No Locked Bearing
Motor Lead Exit	Ko Box
Motor Lead Quantity/Wire Size	6 @ 18 AWG
Motor Lead Termination	Flying Leads
Motor Standards	NEMA
Motor Type	3528LC
Mounting Arrangement	F1
Number of Poles	4
Overall Length	11.75 IN
Power Factor	86
Product Family	General Purpose
Pulley End Bearing Type	Ball
Pulley Face Code	Standard
Pulley Shaft Indicator	Standard
Rodent Screen	None
Service Factor	1.15
Shaft Diameter	0.625 IN
Shaft Extension Location	Pulley End
Shaft Ground Indicator	No Shaft Grounding
Shaft Rotation	Reversible
Shaft Slinger Indicator	No Slinger
Speed	1755 rpm
Speed Code	Single Speed
Starting Method	Direct on line
Thermal Device - Bearing	None
Thermal Device - Winding	None
Vibration Sensor Indicator	No Vibration Sensor
Winding Thermal 1	Manual Thermal Overload
Winding Thermal 1 Location	SB
Winding Thermal 2	None

Nameplate

NP3273L									
CAT.NO.	EL11318M								
SPEC.	35E007L164G1								
HP	1								
VOLTS	115/230								
AMP	9/4.5								
RPM	1755								
FRAME	56H		HZ	60		PH	1		
SER.F.	1.15	CODE	L	DES	L	CL	F		
F.L. AVG. EFF.	82.6	PF	86						
RATING	40C AMB-CONT								
CC			USABLE AT 208V				N/A		
DE	6205		ODE	6203					
ENCL	OPEN	SN							

Parts list

Part number	Description	Quantity
SA288044	SA 35E007L164G1	1.000 ea
RA274245	RA 35E007L164G1	1.000 ea
OC3035F09SP	CYL OIL CAP 35MFD/370V	1.000 ea
EC1645A06SP	ELEC CAP, 645-774 MFD, 125V, 2.06D X 4.	1.000 ea
NS2512A01	INSULATOR, CONDUIT BOX X	1.000 ea
35CB3007	35 CB CASTING W/.88 DIA. LEAD HOLE	1.000 ea
51XB1016A07	10-16 X 7/16 HXWSSLD SERTYB	2.000 ea
11XW1032G06	10-32 X .38, TAPTITE II, HEX WSHR SLTD U	1.000 ea
35EP3209G00	MASTER ODE,203 BRG	1.000 ea
51XW0832A07	8-32 X .44, TAPTITE II, HEX WSHR SLTD SE	2.000 ea
NS2501A02	INSULATOR, CAPACITOR BOX	1.000 ea
35CB3801	CAPACITOR COVER, CAST	1.000 ea
HA7010	CAPACITOR RETENTION CLAMP	1.000 ea
51XB1016A08	10-16X 1/2HXWSSLD SERTYB	2.000 ea
HW5100A03	WAVY WASHER (W1543-017)	1.000 ea
35EP3210B00	MASTER DE,205 BRG,1.000SH	1.000 ea
XY1032A02	10-32 HEX NUT DIRECTIONAL SERRATION	4.000 ea
35CB4521	35 LIPPED CB LID (GALV & PHOSPH)	1.000 ea
51XW0832A07	8-32 X .44, TAPTITE II, HEX WSHR SLTD SE	4.000 ea
HW2501D13	KEY, 3/16 SQ X 1.375	1.000 ea
HA7000A04	KEY RETAINER 0.625 DIA SHAFTS	1.000 ea
85XU0407S04	4X1/4 U DRIVE PIN STAINLESS	2.000 ea
WD1000A15	3-520132-2 AMP FLAG (4M/RL NON-CANC/NON-	4.000 ea
MJ1000A02	GREASE, POLYREX EM EXXON	0.050 lb
MG1050Y01	CELEROL BALDOR GOLD *** NLA IN 5 GALLON	0.017 ga
HA3100A18	THRUBOLT 10-32 X 9.250	4.000 ea
SP5181A01	MODEL 35 LC TORQ STAT SWITCH LEAD ASSY	1.000 ea
LB1624	COMBINED WARNING LABEL, ISO/ANSI PICTOGR	1.000 ea
LC0269	1PH,DV,REV,THERMAL,7 LD,L.AMP THRU HTR H	1.000 ea
LB1087	LABEL,MANUAL RESET (ROLL LABEL)	1.000 ea
MN416A01	TAG-INSTAL-MAINT no wire (2500bx)4/22	1.000 ea

NP3273L	ALUM SUPER-E THERMALLY PROTECTED	1.000 ea
35PA1066	PKG GRP, PRINT PK1008A06	1.000 ea
PE-0000001	ZRTG PE ASSEMBLY	1.000 ea
FE-0000001	ZRTG FE ASSEMBLY	1.000 ea

AC Induction Motor Performance Data

Record # 50383

Typical performance - not guaranteed values

Winding: 35WGL164-R001		Type: 3528LC		Enclosure: OPEN	
Nameplate Data			115 V, 60 Hz: Low Voltage Connection		
Rated Output (HP)		1	Full Load Torque		2.99 LB-FT
Volts		115/230	Start Configuration		direct on line
Full Load Amps		9/4.5	Breakdown Torque		7.91 LB-FT
R.P.M.		1755	Pull-up Torque		6.01 LB-FT
Hz	60 Phase	1	Locked-rotor Torque		9.15 LB-FT
NEMA Design Code	L KVA Code	L	Starting Current		74 A
Service Factor (S.F.)		1.15	No-load Current		4.38 A
NEMA Nom. Eff.	82.6 Power Factor	86	Line-line Res. @ 25°C		0.581 Ω A Ph 2.18 Ω B Ph
Rating - Duty		40C AMB-CONT	Temp. Rise @ Rated Load		36°C
S.F. Amps			Temp. Rise @ S.F. Load		43°C
			Locked-rotor Power Factor		88.3
			Rotor inertia		0.166 LB-FT ²

Load Characteristics 115 V, 60 Hz, 1 HP

% of Rated Load	25	50	75	100	125	150	S.F.
Power Factor	54	71	80	85	88	90	87
Efficiency	64	76.1	79.5	80.8	79.8	77.2	80.2
Speed	1786	1773	1761	1745	1728	1707	1735
Line amperes	4.94	6.04	7.62	9.34	11.4	13.6	10.6

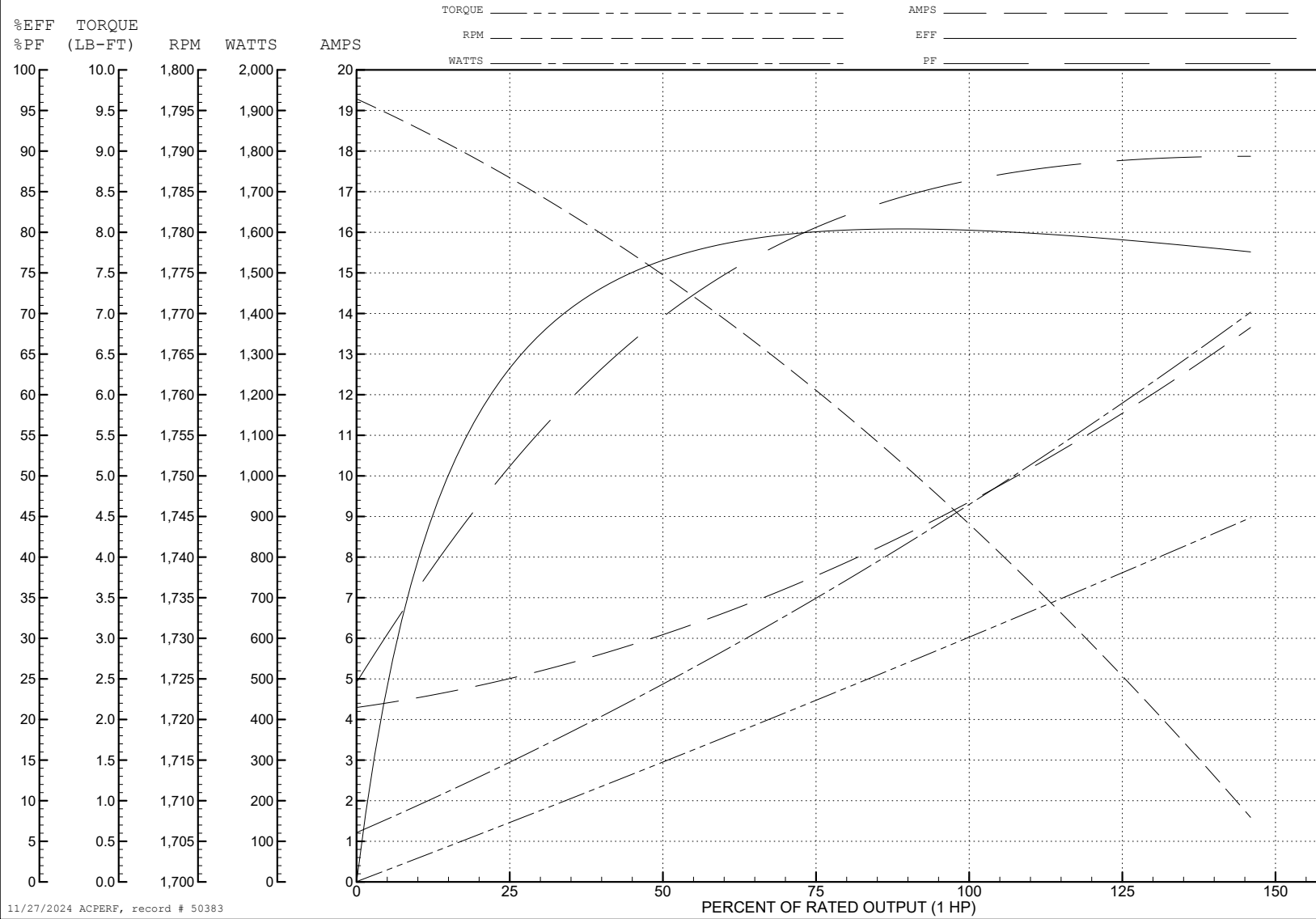
ABB Motors and Mechanical Inc.

WINDING # 35WGL164

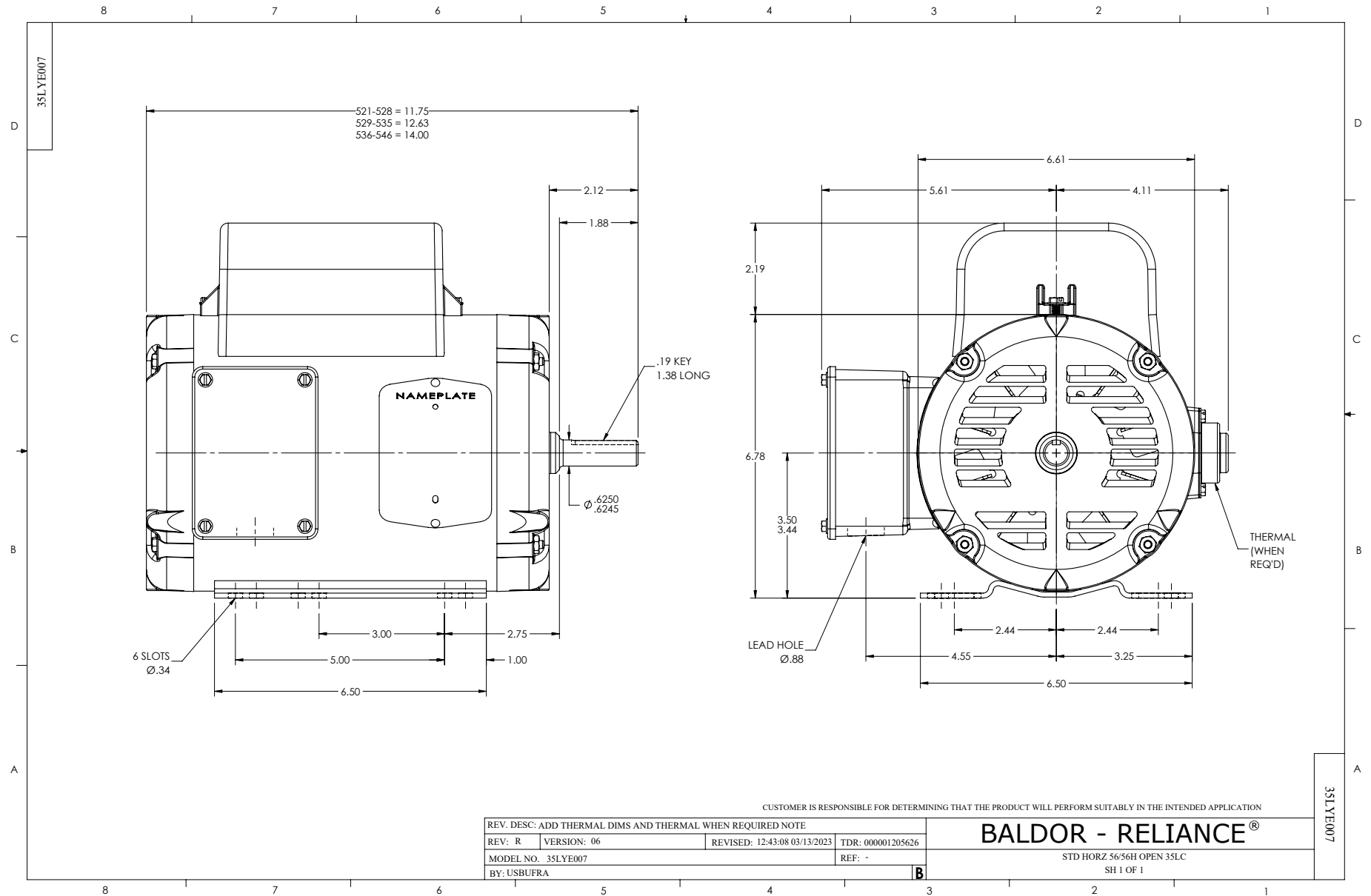
Typical performance - not guaranteed values.

1 HP 1 PH 60 HZ 1755 RPM 115 V 3528LC

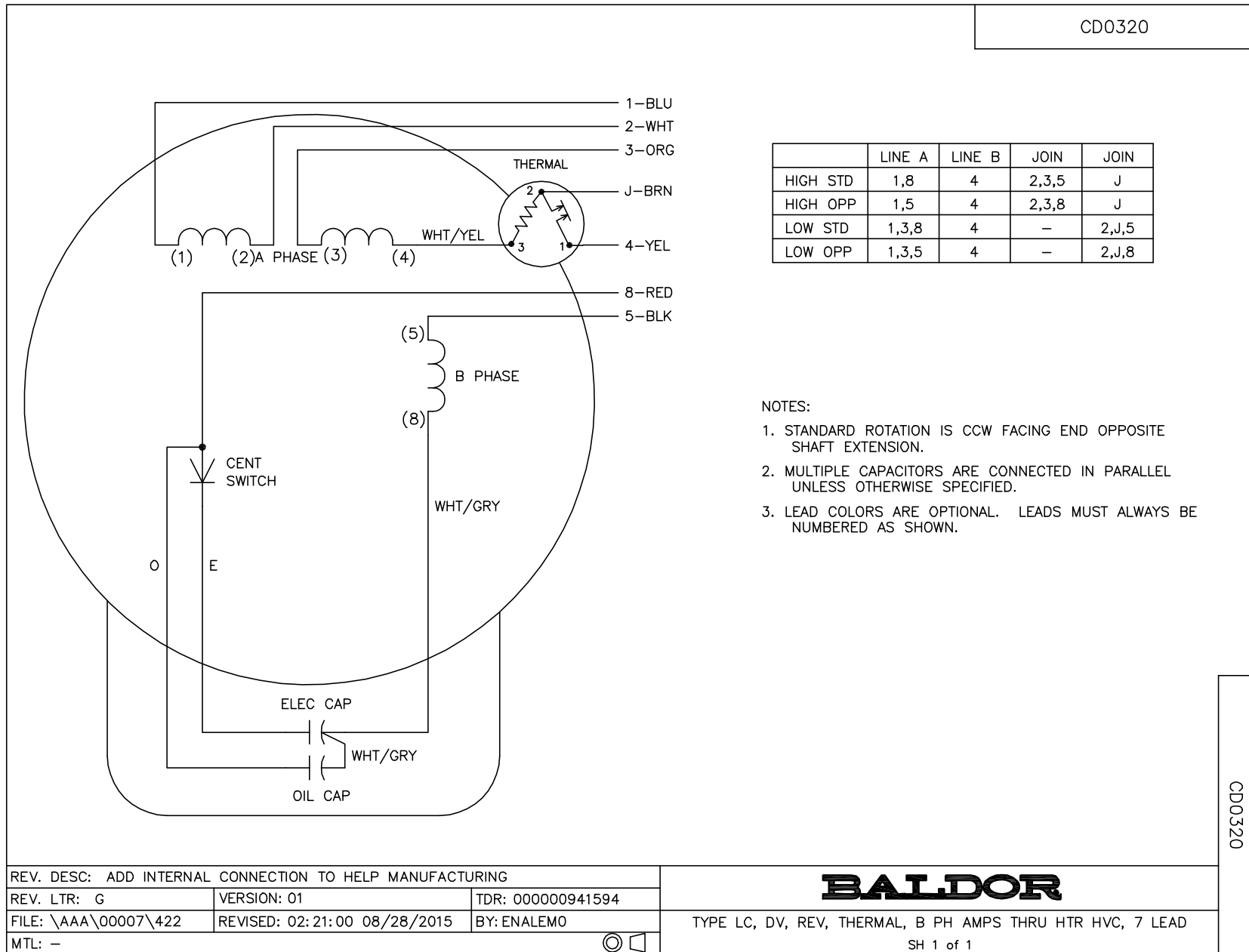
TORQUES (LB-FT): PO=7.91 PU=6.01 LR=9.15 LRA=74



11/27/2024 ACPERF, record # 50383



CD0320



	LINE A	LINE B	JOIN	JOIN
HIGH STD	1,8	4	2,3,5	J
HIGH OPP	1,5	4	2,3,8	J
LOW STD	1,3,8	4	-	2,J,5
LOW OPP	1,3,5	4	-	2,J,8

NOTES:

1. STANDARD ROTATION IS CCW FACING END OPPOSITE SHAFT EXTENSION.
2. MULTIPLE CAPACITORS ARE CONNECTED IN PARALLEL UNLESS OTHERWISE SPECIFIED.
3. LEAD COLORS ARE OPTIONAL. LEADS MUST ALWAYS BE NUMBERED AS SHOWN.

CD0320

REV. DESC: ADD INTERNAL CONNECTION TO HELP MANUFACTURING		
REV. LTR: G	VERSION: 01	TDR: 00000941594
FILE: \AAA\00007\422	REVISED: 02:21:00 08/28/2015	BY: ENALEMO
MTL: -		© □

BALDOR

TYPE LC, DV, REV, THERMAL, B PH AMPS THRU HTR HVC, 7 LEAD
SH 1 of 1