

BALDOR • RELIANCE

Customer information packet

EL1406T

3HP, 3450RPM, 1PH, 60HZ, 182T, 3628LC, OPEN, F1

Class - None

Division - Not Applicable

Specifications

Enclosure	OPEN
Frame	182T
Frame Material	Steel
Frequency	60.00 Hz
Haz Area Class and Group	None
Haz Area Division	Not Applicable
Motor Letter Type	Cap Start, Cap Run
Output @ Frequency	3.000 HP @ 60 HZ
Phase	1
Synchronous Speed @ Frequency	3600 RPM @ 60 HZ
Voltage @ Frequency	115.0 V @ 60 HZ 230.0 V @ 60 HZ
Agency Approvals	UR CSA CURUSEEV
Ambient Temperature	40 °C
Auxillary Box	No Auxillary Box
Auxillary Box Lead Termination	None
Base Indicator	Rigid
Bearing Grease Type	Polyrex EM (-20F +300F)
Blower	None
Current @ Voltage	24.600 A @ 115.0 V 12.300 A @ 230.0 V
Design Code	L
Drip Cover	No Drip Cover
Duty Rating	CONT
Efficiency @ 100% Load	81.0 %
Electrically Isolated Bearing	Not Electrically Isolated
Feedback Device	NO FEEDBACK
Front Face Code	Standard
Front Shaft Indicator	None
Heater Indicator	No Heater

Part detail

Revision	U
Type	AC
Mech. spec.	36E002
Base	
Status	PRD/A
Elec. spec.	36WGS117
Layout	36LYE002
Eff. date	09-20-2024
CD Diagram	CD0055
Poles	02
Leads	4#14 A PH,2#16 B PH
Proprietary	False
Created date	11-13-2008

High Voltage Full Load Amps	12.3 a
Insulation Class	F
Inverter Code	Not Inverter
KVA Code	G
Lifting Lugs	No Lifting Lugs
Locked Bearing Indicator	No Locked Bearing
Motor Lead Exit	Ko Box
Motor Lead Quantity/Wire Size	4 @ 14 AWG, A PH
Motor Lead Termination	Flying Leads
Motor Standards	NEMA
Motor Type	3628LC
Mounting Arrangement	F1
Number of Poles	2
Overall Length	15.00 IN
Power Factor	98
Product Family	General Purpose
Pulley End Bearing Type	Ball
Pulley Face Code	Standard
Pulley Shaft Indicator	Standard
Rodent Screen	None
Service Factor	1.15
Shaft Diameter	1.125 IN
Shaft Extension Location	Pulley End
Shaft Ground Indicator	No Shaft Grounding
Shaft Rotation	Reversible
Shaft Slinger Indicator	No Slinger
Speed	3450 rpm
Speed Code	Single Speed
Starting Method	Direct on line
Thermal Device - Bearing	None
Thermal Device - Winding	None
Vibration Sensor Indicator	No Vibration Sensor
Winding Thermal 1	None
Winding Thermal 2	None

Nameplate

NP2116L									
CAT.NO.	EL1406T								
SPEC.	36E002S117E7								
HP	3								
VOLTS	115/230								
AMP	24.6/12.3								
RPM	3450								
FRAME	182T			HZ	60		PH	1	
SER.F.	1.15	CODE	G	DES	L	CL	F		
NEMA-NOM-EFF	81	PF	98						
RATING	40C AMB-CONT								
CC									
DE	6206	ODE	6205						
ENCL	OPEN	SN							

Parts list

Part number	Description	Quantity
SA177110	SA 36E002S117E7	1.000 ea
RA165163	RA 36E002S117E7	1.000 ea
OC3070C09	AEROVOX #Z24P247OM22A1 OIL CAP 70MFD/240	1.000 ea
EC1815A06SP	ELEC CAP 115V 2.0 X 4.3	1.000 ea
HA6362ZP	LIFTING LUG FOR 36 FRAME MOTORS.	2.000 ea
36CB3004	36 CB CASTING W/1.09 DIA LEAD HOLE @ 6:0	1.000 ea
51XB1016A08	10-16X 1/2HXWSSLD SERTYB	2.000 ea
11XW1032G06	10-32 X .38, TAPTITE II, HEX WSHR SLTD U	1.000 ea
HW3001B01	BRASS CUP WASHER, FOR #10 SCREW	1.000 ea
36EP3204B00	MASTER ODE,205 BRG,GRSR	1.000 ea
HW4500A01	1641B(ALEMITE)400 UNIV, GREASE FITT	1.000 ea
SP1008A01	BAFFLE, MODEL 36 & 37	1.000 ea
13XF0832A08	8-32 X.50 PAN HD,SLTD, TYPE F SCREW, ZIN	2.000 ea
51XW2520A10	.25-20 X .62, TAPTITE II, HEX WSHR SLTD	2.000 ea
HW5100A05	WVY WSHR F/205 & 304 BRGS	1.000 ea
36EP3205D00	MASTER DE,206 BRG,1.197SH,GRSR	1.000 ea
HW4500A01	1641B(ALEMITE)400 UNIV, GREASE FITT	1.000 ea
XY2520A12	1/4-20 HEX NUT, DIRECTIONAL SERRATIONS	4.000 ea
36CB4516	750LIPPED CB LID - GALVANNEAL	1.000 ea
51XW0832A07	8-32 X .44, TAPTITE II, HEX WSHR SLTD SE	4.000 ea
HW2501E16	KEY, 1/4 SQ X 1.750	1.000 ea
HA7000A02	KEY RETAINER RING, 1 1/8 DIA, 1 3/8 DIA	1.000 ea
85XU0407S04	4X1/4 U DRIVE PIN STAINLESS	2.000 ea
WD1000A15	3-520132-2 AMP FLAG (4M/RL NON-CANC/NON-	4.000 ea
36CB3800SP	CAPACITOR COVER, CAST	1.000 ea
HA7010A01	CAPACITOR RETENTION CLAMP, 6.562 LONG	1.000 ea
MJ1000A02	GREASE, POLYREX EM EXXON	0.050 lb
MG1050Y01	CELEROL BALDOR GOLD *** NLA IN 5 GALLON	0.022 ga
HA3101A45	THRUBOLT- 1/4-20 X 11.126	4.000 ea
SP5064A01	MODEL 36 TYPE LC STATIONARY SWITCH LEAD	1.000 ea
LC0001A01	CONN LABEL / WARNING LABEL (LC0001 / LB1	1.000 ea

NP2116L	ALUM SUPER-E UL CC	1.000 ea
36PA1001	PKG GRP, PRINT PK1017A06	1.000 ea
MN416A01	TAG-INSTAL-MAINT no wire (2500bx)4/22	1.000 ea
PE-0000001	ZRTG PE ASSEMBLY	1.000 ea
FE-0000001	ZRTG FE ASSEMBLY	1.000 ea

AC Induction Motor Performance Data

Record # 28249

Typical performance - not guaranteed values

Winding: 36WGS117-R001		Type: 3628LC		Enclosure: OPEN	
Nameplate Data			230 V, 60 Hz: High Voltage Connection		
Rated Output (HP)	3	Full Load Torque	4.56 LB-FT		
Volts	115/230	Start Configuration	direct on line		
Full Load Amps	24.6/12.3	Breakdown Torque	22.1 LB-FT		
R.P.M.	3450	Pull-up Torque	6.56 LB-FT		
Hz	60	Phase	1	Locked-rotor Torque	8.88 LB-FT
NEMA Design Code	L	KVA Code	G	Starting Current	78 A
Service Factor (S.F.)			1.15	No-load Current	1.46 A
NEMA Nom. Eff.	81	Power Factor	98	Line-line Res. @ 25°C	0.74602 Ω A Ph 0.85786 Ω B Ph
Rating - Duty			40C AMB-CONT	Temp. Rise @ Rated Load	32°C
S.F. Amps				Temp. Rise @ S.F. Load	39°C

Load Characteristics 230 V, 60 Hz, 3 HP

% of Rated Load	25	50	75	100	125	150	S.F.
Power Factor	98	98	98	98	97	96	97
Efficiency	67.4	77.6	81.1	81.1	79.6	75.5	80.2
Speed	3559	3533.3	3506	3471.6	3436.5	3370.6	3451
Line amperes	3.72	6.42	9.17	12.3	15.7	21	14.3

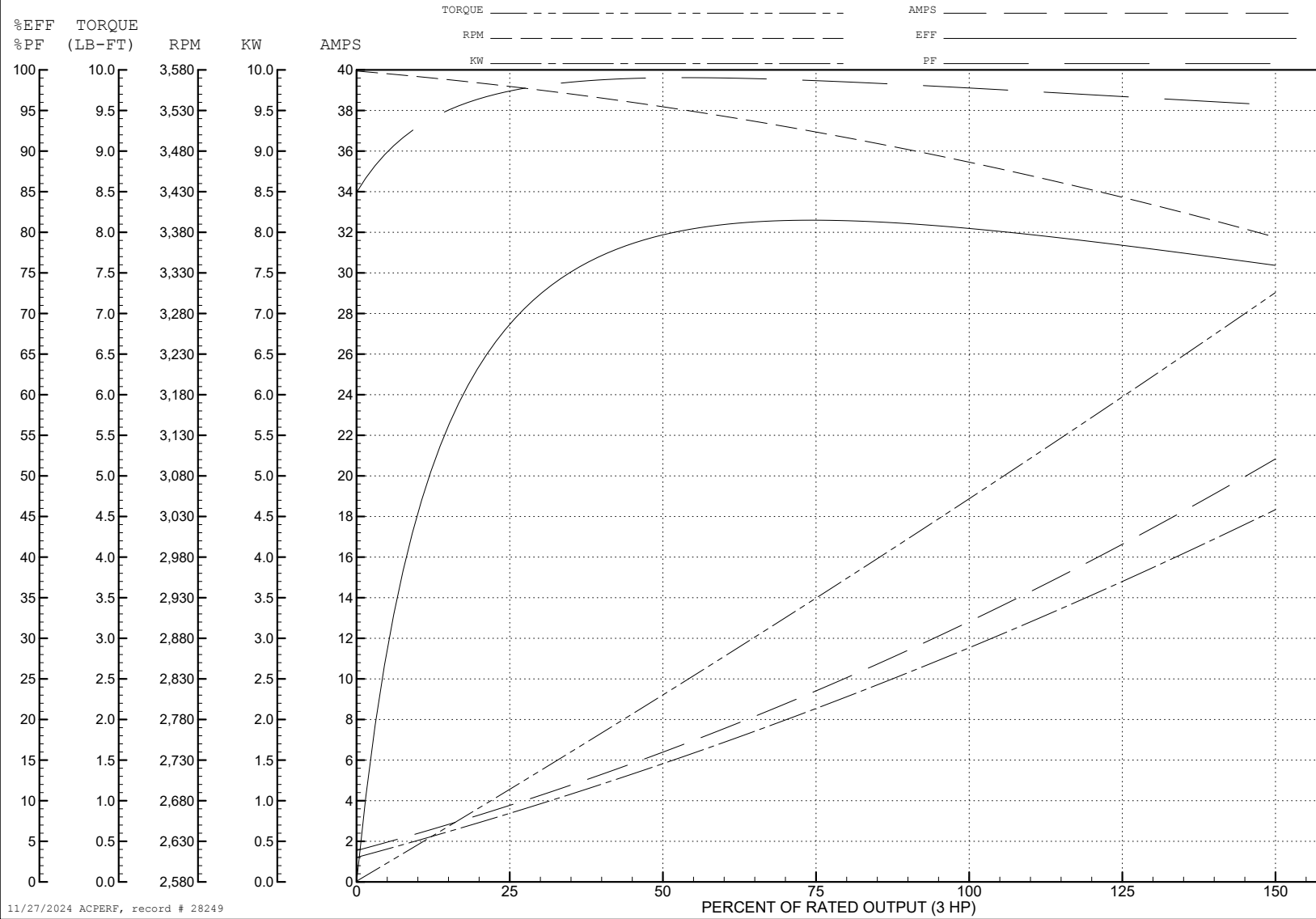
ABB Motors and Mechanical Inc.

WINDING # 36WGS117

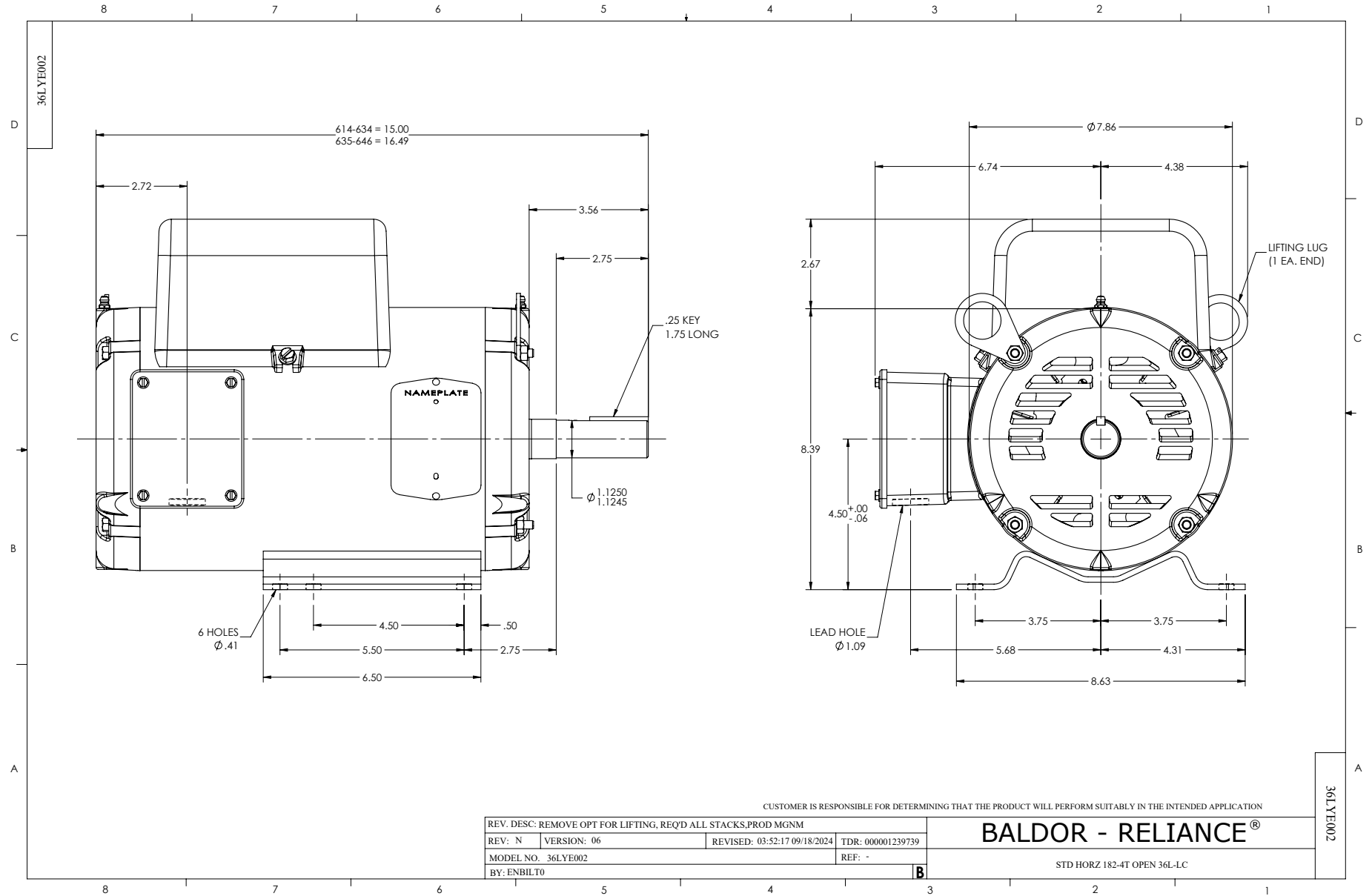
Typical performance - not guaranteed values.

3 HP 1 PH 60 HZ 3450 RPM 230 V 3628LC

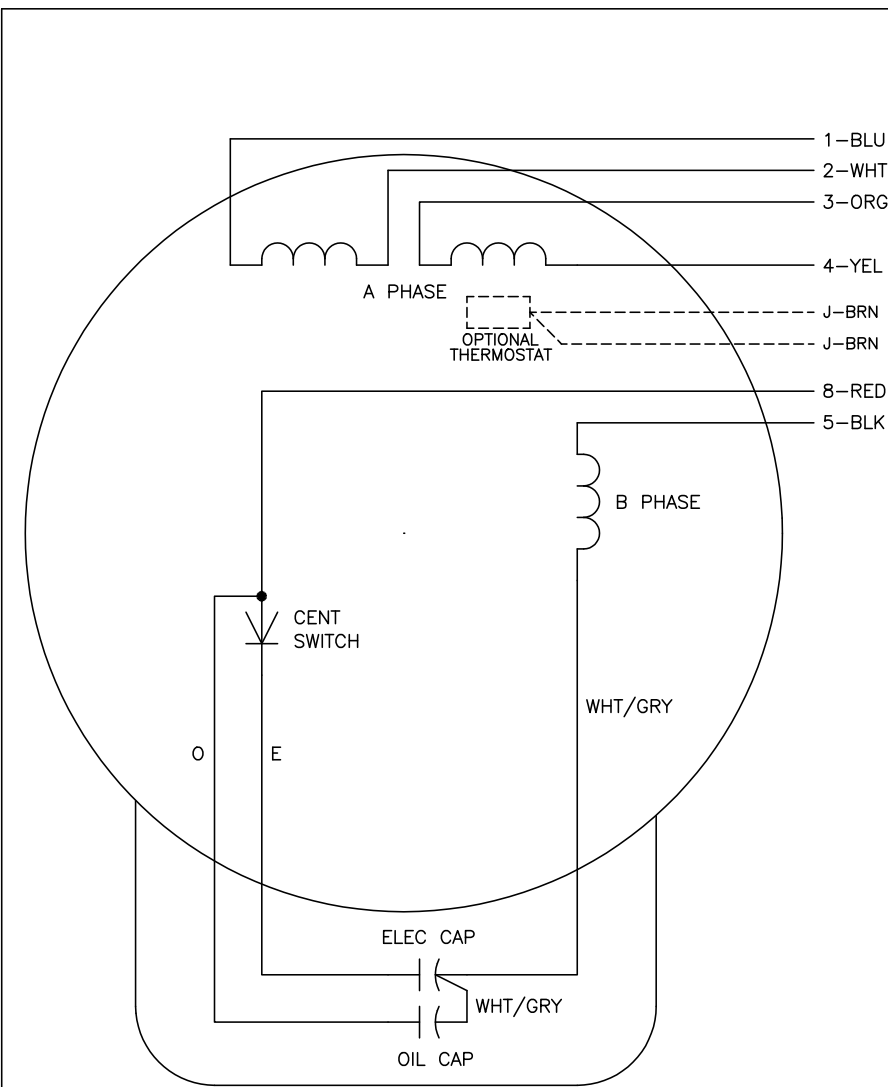
TORQUES (LB-FT): PO=22.1 PU=6.56 LR=8.88 LRA=78



11/27/2024 ACPERF, record # 28249



CD0055



	LINE A	LINE B	JOIN
HIGH STD	1	4,5	2,3,8
HIGH OPP	1	4,8	2,3,5
LOW STD	1,3,8	2,4,5	-
LOW OPP	1,3,5	2,4,8	-

NOTES:

1. STANDARD ROTATION IS CCW FACING END OPPOSITE SHAFT EXTENSION.
2. OPTIONAL THERMOSTAT IS PROVIDED WHEN SPECIFIED.
3. MULTIPLE CAPACITORS ARE CONNECTED IN PARALLEL UNLESS OTHERWISE SPECIFIED.
4. LEAD COLORS ARE OPTIONAL. LEADS MUST ALWAYS BE NUMBERED AS SHOWN.

CD0055

REV. DESC: REVISE TO SHOW OPTIONAL COLORS			
REV. LTR: D	BY: JLP	REVISED: 04/08/99 1:17	TDR: 0178636
C00000		FILE: AAA00007414	MDL: -
		MTL: -	

BALDOR ELECTRIC Co.

TYPE LC, DV, REV, 6 LEADS