



Customer information packet

EL3507

.75HP, 1755RPM, 1PH, 60HZ, 56, 3522LC, TEFC, F1

Class - None

Division - Not Applicable

Specifications

Enclosure	TEFC
Frame	56
Frame Material	Steel
Frequency	60.00 Hz
Haz Area Class and Group	None
Haz Area Division	Not Applicable
Motor Letter Type	Cap Start, Cap Run
Output @ Frequency	.750 HP @ 60 HZ
Phase	1
Synchronous Speed @ Frequency	1800 RPM @ 60 HZ
Voltage @ Frequency	115.0 V @ 60 HZ 208.0 V @ 60 HZ 230.0 V @ 60 HZ
Agency Approvals	CSA UR
Ambient Temperature	40 °C
Auxillary Box	No Auxillary Box
Auxillary Box Lead Termination	None
Base Indicator	Rigid
Bearing Grease Type	Polyrex EM (-20F +300F)
Blower	None
Current @ Voltage	6.100 A @ 115.0 V 3.350 A @ 208.0 V 3.050 A @ 230.0 V
Design Code	N
Drip Cover	No Drip Cover
Duty Rating	CONT
Efficiency @ 100% Load	82.5 %
Electrically Isolated Bearing	Not Electrically Isolated
Feedback Device	NO FEEDBACK
Front Shaft Indicator	None
Heater Indicator	No Heater

Part detail

Revision	C
Type	AC
Mech. spec.	35E008
Base	
Status	PRD/A
Elec. spec.	35WGL999
Layout	35LYE008
Eff. date	04-29-2024
CD Diagram	CD0055
Poles	04
Leads	6#18
Proprietary	False
Created date	02-23-2023

High Voltage Full Load Amps	3.1 a
Insulation Class	F
Inverter Code	Not Inverter
KVA Code	L
Lifting Lugs	No Lifting Lugs
Locked Bearing Indicator	No Locked Bearing
Motor Lead Quantity/Wire Size	6 @ 18 AWG
Motor Lead Termination	Flying Leads
Motor Standards	NEMA
Motor Type	3522LC
Mounting Arrangement	F1
Number of Poles	4
Overall Length	13.25 IN
Power Factor	95
Product Family	General Purpose
Pulley End Bearing Type	Ball
Pulley Face Code	Standard
Pulley Shaft Indicator	Standard
Rodent Screen	None
Service Factor	1.25
Shaft Diameter	0.625 IN
Shaft Ground Indicator	No Shaft Grounding
Shaft Rotation	Reversible
Shaft Slinger Indicator	No Slinger
Speed	1755 rpm
Speed Code	Single Speed
Starting Method	Direct on line
Thermal Device - Bearing	None
Thermal Device - Winding	None
Vibration Sensor Indicator	No Vibration Sensor
Winding Thermal 1	None
Winding Thermal 2	None

Nameplate

NP2116L									
CAT.NO.	EL3507								
SPEC.	35E008L999G1								
HP	.75								
VOLTS	115/208-230								
AMP	6.1/3.35-3.05								
RPM	1755								
FRAME	56			HZ	60		PH	1	
SER.F.	1.25	CODE	L	DES	N	CL	F		
NEMA-NOM-EFF	82.5	PF	95						
RATING	40C AMB-CONT								
CC									
DE	6205	ODE	6203						
ENCL	TEFC	SN							
	SFA 7.6/4.3-3.8								

Parts list

Part number	Description	Quantity
SA414878	SA 35E008L999G1	1.000 ea
RA406647	RA 35E008L999G1	1.000 ea
OC3050F09SP	CAPACITOR 50 MFD 370 VAC	1.000 ea
EC1540A06SP	ELEC CAP, 540-648 MFD, 125V, 2.06D X 4.	1.000 ea
WD3006A01	RSS-2-103JT 2W 10K RES. METAL OXIDE 5%	1.000 ea
NS2512A01	INSULATOR, CONDUIT BOX X	1.000 ea
35CB3007	35 CB CASTING W/.88 DIA. LEAD HOLE	1.000 ea
36GS1000SP	GASKET-CONDUIT BOX, .06 THICK #SV-330 LE	1.000 ea
51XB1016A07	10-16 X 7/16 HXWSSLD SERTYB	2.000 ea
11XW1032G06	10-32 X .38, TAPTITE II, HEX WSHR SLTD U	1.000 ea
35EP3122K00	MASTER ODE,203 BRG,.683SH,#26 DRN,FH MTG	1.000 ea
51XW0832A07	8-32 X .44, TAPTITE II, HEX WSHR SLTD SE	2.000 ea
35CB3801	CAPACITOR COVER, CAST	1.000 ea
NS2501A02	INSULATOR, CAPACITOR BOX	1.000 ea
HA7010	CAPACITOR RETENTION CLAMP	1.000 ea
34GS3002	GASKET, CAPACITOR BOX	1.000 ea
51XB1016A08	10-16X 1/2HXWSSLD SERTYB	2.000 ea
HW5100A03	WAVY WASHER (W1543-017)	1.000 ea
35EP3123A00	MASTER DE,205 BRG,.998SH,#26 DRN	1.000 ea
XY1032A02	10-32 HEX NUT DIRECTIONAL SERRATION	4.000 ea
51XB1214A16	12-14X1.00 HXWSSLD SERTYB	1.000 ea
35FH4005A32SP	IEC FH NO GRSR W/3 HOLES - PRIMED	1.000 ea
51XW1032A06	10-32 X .38, TAPTITE II, HEX WSHR SLTD S	3.000 ea
35CB4521GX	CONDUIT BOX LID KIT **ORDER INDIV PARTS	1.000 ea
51XW0832A07	8-32 X .44, TAPTITE II, HEX WSHR SLTD SE	4.000 ea
HW2501D13	KEY, 3/16 SQ X 1.375	1.000 ea
HA7000A04	KEY RETAINER 0.625 DIA SHAFTS	1.000 ea
85XU0407S04	4X1/4 U DRIVE PIN STAINLESS	2.000 ea
MJ1000A02	GREASE, POLYREX EM EXXON	0.050 lb
35FN3002A05SP	EXFN, PLASTIC, 6.376 OD, .638 ID	1.000 ea
SP5181A01	MODEL 35 LC TORQ STAT SWITCH LEAD ASSY	1.000 ea

HA3100A38	THRUBOLT 10-32 X 9.375	4.000 ea
WD1000A15	3-520132-2 AMP FLAG (4M/RL NON-CANC/NON-	4.000 ea
MG1050Y01	CELEROL BALDOR GOLD *** NLA IN 5 GALLON	0.017 ga
LC0001A01	CONN LABEL / WARNING LABEL (LC0001 / LB1	1.000 ea
NP2116L	ALUM SUPER-E UL CC	1.000 ea
35PA1066	PKG GRP, PRINT PK1008A06	1.000 ea
MN416A01	TAG-INSTAL-MAINT no wire (2500bx)4/22	1.000 ea
FE-0000001	ZRTG FE ASSEMBLY	1.000 ea
PE-0000001	ZRTG PE ASSEMBLY	1.000 ea

Accessories

Part number	Description	Multiplier
35-8762	C FACE KIT	A8
35EP1506A01SP	D-FLANGE KIT	A8

AC Induction Motor Performance Data

Record # 85084

Typical performance - not guaranteed values

Winding: 35WGL999-R002		Type: 3522LC	Enclosure: OPEN	
Nameplate Data			115 V, 60 Hz: Low Voltage Connection	
Rated Output (HP)	.75	Full Load Torque	2.25 LB-FT	
Volts	115/208-230	Start Configuration	direct on line	
Full Load Amps	6.1/3.3-3.0	Breakdown Torque	6.17 LB-FT	
R.P.M.	1755	Pull-up Torque	5.27 LB-FT	
Hz	60 Phase 1	Locked-rotor Torque	9.16 LB-FT	
NEMA Design Code	N KVA Code L	Starting Current	59 A	
Service Factor (S.F.)	1.25	No-load Current	2.04 A	
NEMA Nom. Eff.	0 Power Factor 0	Line-line Res. @ 25°C	1.09 Ω A Ph 1.33 Ω B Ph	
Rating - Duty	40C AMB-CONT	Temp. Rise @ Rated Load	23°C	
S.F. Amps	7.7/4.3-3.8	Temp. Rise @ S.F. Load	29°C	
		Locked-rotor Power Factor	99.6	
		Rotor inertia	0.159 lb-ft ²	

Load Characteristics 115 V, 60 Hz, 0.75 HP

% of Rated Load	25	50	75	100	125	150	S.F.
Power Factor	77	91	94	96	95	96	95
Efficiency	60.6	76.6	82	83.2	82.4	80.7	82.4
Speed	1788	1777	1766	1753	1736	1718	1736
Line amperes	2.64	3.52	4.75	6.12	7.74	9.43	7.74

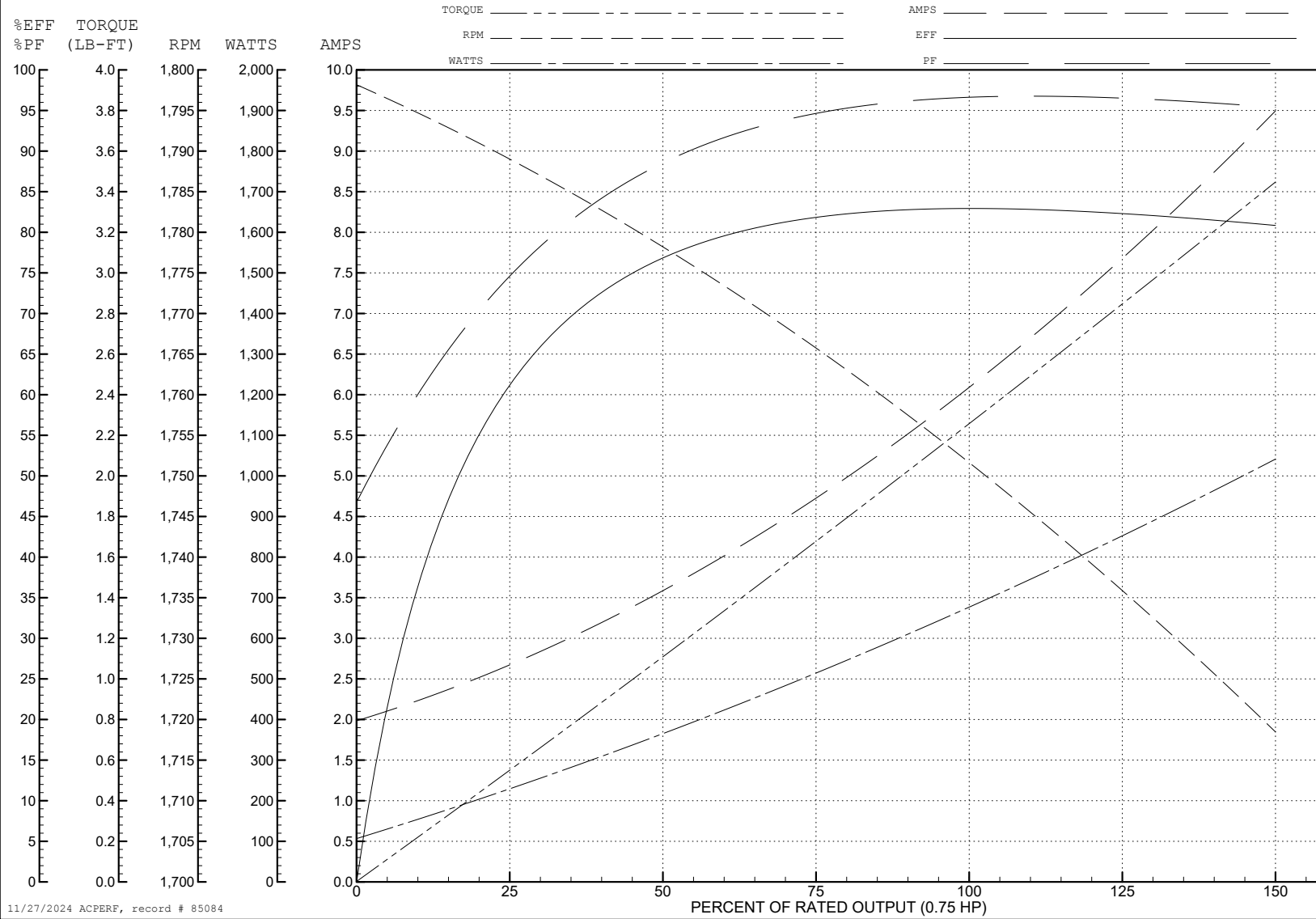
ABB Motors and Mechanical Inc.

WINDING # 35WGL999

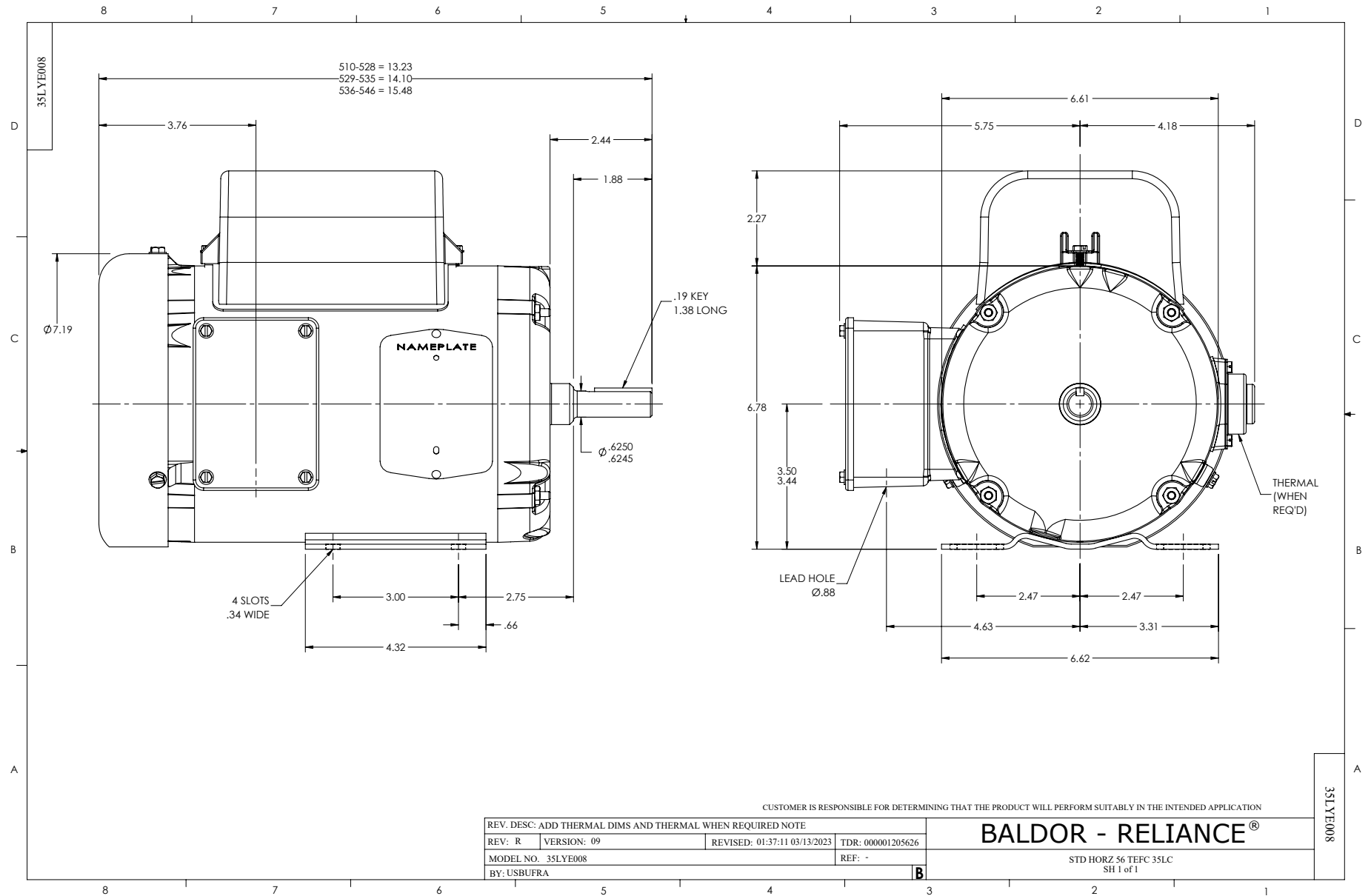
Typical performance - not guaranteed values.

0.75 HP 1 PH 60 HZ 1755 RPM 115 V 3522LC

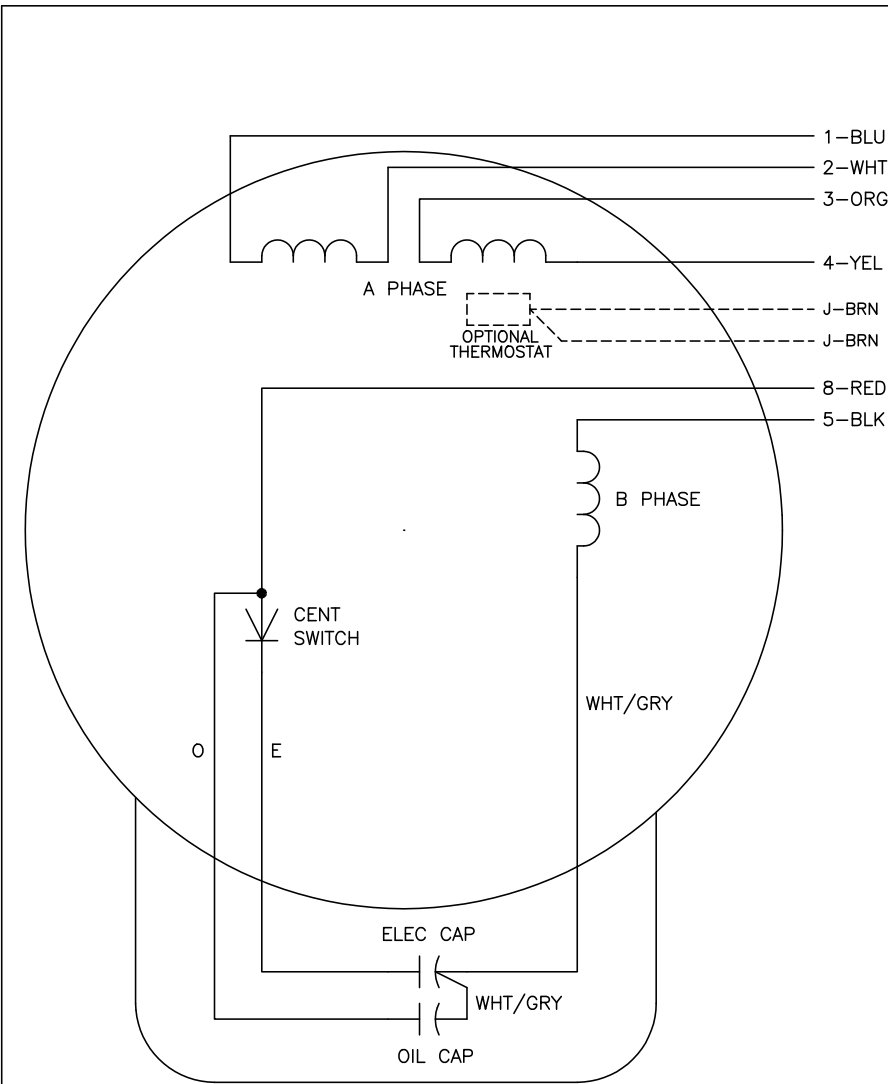
TORQUES (LB-FT): PO=6.17 PU=5.27 LR=9.16 LRA=59



11/27/2024 ACPERF, record # 85084



CD0055



	LINE A	LINE B	JOIN
HIGH STD	1	4,5	2,3,8
HIGH OPP	1	4,8	2,3,5
LOW STD	1,3,8	2,4,5	-
LOW OPP	1,3,5	2,4,8	-

NOTES:

1. STANDARD ROTATION IS CCW FACING END OPPOSITE SHAFT EXTENSION.
2. OPTIONAL THERMOSTAT IS PROVIDED WHEN SPECIFIED.
3. MULTIPLE CAPACITORS ARE CONNECTED IN PARALLEL UNLESS OTHERWISE SPECIFIED.
4. LEAD COLORS ARE OPTIONAL. LEADS MUST ALWAYS BE NUMBERED AS SHOWN.

CD0055

REV. DESC: REVISE TO SHOW OPTIONAL COLORS			
REV. LTR: D	BY: JLP	REVISED: 04/08/99 1:17	TDR: 0178636
C00000		FILE: AAA00007414	MDL: -
		MTL: -	

BALDOR ELECTRIC Co.

TYPE LC, DV, REV, 6 LEADS