

**BALDOR • RELIANCE**

---

# Customer information packet

## EM2535T-5G

30HP, 1775RPM, 3PH, 60HZ, 286T, 4060M, OPSB, F1

## Specifications

Enclosure	OPSB
Frame	286T
Frame Material	Steel
Frequency	60.00 Hz
Motor Letter Type	Three Phase
Output @ Frequency	30.000 HP @ 60 HZ
Phase	3
Synchronous Speed @ Frequency	1800 RPM @ 60 HZ
Voltage @ Frequency	575.0 V @ 60 HZ
Agency Approvals	CSA EEV UR CSA
Ambient Temperature	40 °C
Auxillary Box	No Auxillary Box
Auxillary Box Lead Termination	None
Base Indicator	Rigid
Bearing Grease Type	Polyrex EM (-20F +300F)
Blower	None
Current @ Voltage	29.000 A @ 575.0 V
Design Code	A
Drip Cover	No Drip Cover
Duty Rating	CONT
Efficiency @ 100% Load	94.1 %
Electrically Isolated Bearing	Not Electrically Isolated
Feedback Device	NO FEEDBACK
Front Face Code	Standard
Front Shaft Indicator	None
Heater Indicator	No Heater
High Voltage Full Load Amps	29.0 a
Insulation Class	H
Inverter Code	Inverter Ready
KVA Code	H

## Part detail

Revision	M
Type	AC
Mech. spec.	40E246
Base	
Status	PRD/A
Elec. spec.	40WGX351
Layout	40LYE246
Eff. date	06-27-2024
CD Diagram	CD0006
Poles	04
Leads	3#10
Proprietary	False
Created date	05-27-2016

Lifting Lugs	Standard Lifting Lugs
Locked Bearing Indicator	No Locked Bearing
Motor Lead Exit	Ko Box
Motor Lead Quantity/Wire Size	3 @ 10 AWG
Motor Lead Termination	Flying Leads
Motor Standards	NEMA
Motor Type	4060M
Mounting Arrangement	F1
Number of Poles	4
Overall Length	26.06 IN
Power Factor	82
Product Family	General Purpose
Pulley End Bearing Type	Ball
Pulley Face Code	Standard
Pulley Shaft Indicator	Standard
Rodent Screen	None
Service Factor	1.15
Shaft Diameter	1.875 IN
Shaft Extension Location	Pulley End
Shaft Ground Indicator	Shaft Grounding
Shaft Rotation	Reversible
Shaft Slinger Indicator	No Slinger
Speed	1775 rpm
Speed Code	Single Speed
Starting Method	Direct on line
Thermal Device - Bearing	None
Thermal Device - Winding	None
Vibration Sensor Indicator	No Vibration Sensor
Winding Thermal 1	None
Winding Thermal 2	None

**Nameplate**

**NP3554L**

<b>CAT.NO.</b>	EM2535T-5G		<b>P/N</b>			<b>ENCL</b>	OPSB
<b>SPEC.</b>	40E246X351G1	<b>CC</b>	010A	<b>FRAME</b>	286T	<b>SER.NO.</b>	
<b>HP</b>	30	<b>CLASS</b>	H	<b>HZ</b>	60		
<b>RPM</b>	1775	<b>PH</b>	3	<b>DES</b>	A		
<b>VOLTS</b>	575	<b>CODE</b>	H	<b>ODE BRG</b>	6309	<b>DE BRG</b>	6311
<b>AMPS</b>	29						
<b>RATING</b>	40C AMB-CONT	<b>NEMA-NOM-EFF</b>	94.1	<b>GREASE</b>	POLYREX EM		
<b>PF</b>	82	<b>SER.F.</b>	1.15	<b>VPWM INVERTER READY</b>			
<b>HTR-VOLTS</b>	<b>HTR-AMPS</b>	<b>MAX. SPACE HEATER TEMP.</b>					

## Parts list

Part number	Description	Quantity
SA321229	SA 40E246X351G1	1.000 ea
RA308981	RA 40E246X351G1	1.000 ea
HA6361A01	LIFTING LUG FOR 37, 39 & 40 FRAME ZINC	2.000 ea
HA6017	CAST ADAPTER, 40,42 KOBX	1.000 ea
19XW3118A12	.31-18 X .75 HEX WASHER HEAD TAPTITE II	2.000 ea
WD1000B25	GND LUG, BURNDY L125HP OR T&B L125HP-BB	1.000 ea
19XW3118G08	.31-18X.50,HEX WSHR HD,TAPTITE 2,GREEN	1.000 ea
HW1001A31	LOCKWASHER 5/16, ZINC PLT.591 OD, .319 I	2.000 ea
10CB3000SP	KOBX, CAST W/2.00 LEAD HOLE	1.000 ea
19XW3118A12	.31-18 X .75 HEX WASHER HEAD TAPTITE II	4.000 ea
40EP3200A02	STD FREP OPEN 309 BRG	1.000 ea
HW5100A11	W3917-042 WVY WSHR (WB)	1.000 ea
40EP3200B01	STD PUEP OPEN 311 LOCKED BRG W/AIR DEFLE	1.000 ea
10XN3118K40	5/16-18 X 2.25" HEX HD, GRADE 5	4.000 ea
HW1001A31	LOCKWASHER 5/16, ZINC PLT.591 OD, .319 I	4.000 ea
XY3816A12	3/8-16 FINISHED NUT W/SERRATIONS	8.000 ea
10CB3500SP	CONDUIT BOX LID, CAST	1.000 ea
51XW2520A12	.25-20 X .75, TAPTITE II, HEX WSHR SLTD	4.000 ea
HW2501H28	KEY, 1/2 SQ X 3.250	1.000 ea
HW4500A03	GREASE FITTING, .125 NPT 1610(ALEMITE) 8	1.000 ea
HW4500A20	1/8NPT SL PIPE PLUG	1.000 ea
HA4051A00	PLASTIC CAP FOR GREASE FITTING	1.000 ea
MG1050Y01	CELEROL BALDOR GOLD *** NLA IN 5 GALLON	0.070 ga
MJ1000A02	GREASE, POLYREX EM EXXON	0.050 lb
HW4500A03	GREASE FITTING, .125 NPT 1610(ALEMITE) 8	1.000 ea
HW4500A20	1/8NPT SL PIPE PLUG	1.000 ea
HA4051A00	PLASTIC CAP FOR GREASE FITTING	1.000 ea
85XU0407S04	4X1/4 U DRIVE PIN STAINLESS	4.000 ea
40AD2002A01	LEXAN BAFFLE 40 FR OPEN	1.000 ea
40AD2002A01	LEXAN BAFFLE 40 FR OPEN	1.000 ea
HA3154A06	THRUBOLT STUD 3/8-16 X 19.500	4.000 ea

LB1624	COMBINED WARNING LABEL, ISO/ANSI PICTOGR	1.000 ea
LC0006	CONNECTION LABEL	1.000 ea
NP3554L	SS SUPER-E,CURUS-EEV,NEMA PREM,CC,300 SR	1.000 ea
40PA1000	PACKAGING GROUP	1.000 ea
MN416A01	TAG-INSTAL-MAINT no wire (2500bx)4/22	1.000 ea

**AC Induction Motor Performance Data**

Record # 57367

Typical performance - not guaranteed values

Winding: 40WGX351-R002		Type: 4060M	Enclosure: OPSB
<b>Nameplate Data</b>		<b>575 V, 60 Hz: Single Voltage Motor</b>	
Rated Output (HP)	30	Full Load Torque	88.7 LB-FT
Volts	575	Start Configuration	direct on line
Full Load Amps	29	Breakdown Torque	278 LB-FT
R.P.M.	1775	Pull-up Torque	129 LB-FT
Hz	60 Phase	Locked-rotor Torque	160 LB-FT
NEMA Design Code	A KVA Code	Starting Current	200 A
Service Factor (S.F.)	1.15	No-load Current	12.2 A
NEMA Nom. Eff.	94.1 Power Factor	Line-line Res. @ 25°C	0.328 Ω
Rating - Duty	40C AMB-CONT	Temp. Rise @ Rated Load	29°C
S.F. Amps		Temp. Rise @ S.F. Load	35°C
		Locked-rotor Power Factor	31.5
		Rotor inertia	4.77 LB-FT <sup>2</sup>

**Load Characteristics 575 V, 60 Hz, 30 HP**

% of Rated Load	25	50	75	100	125	150	S.F.
Power Factor	45	67	78	83	85	85	84
Efficiency	90.4	93.8	94.4	94.3	93.5	93	93.8
Speed	1794	1788	1782	1777	1770	1763	1773
Line amperes	14	17.9	23.1	28.9	35.4	42.4	32.8

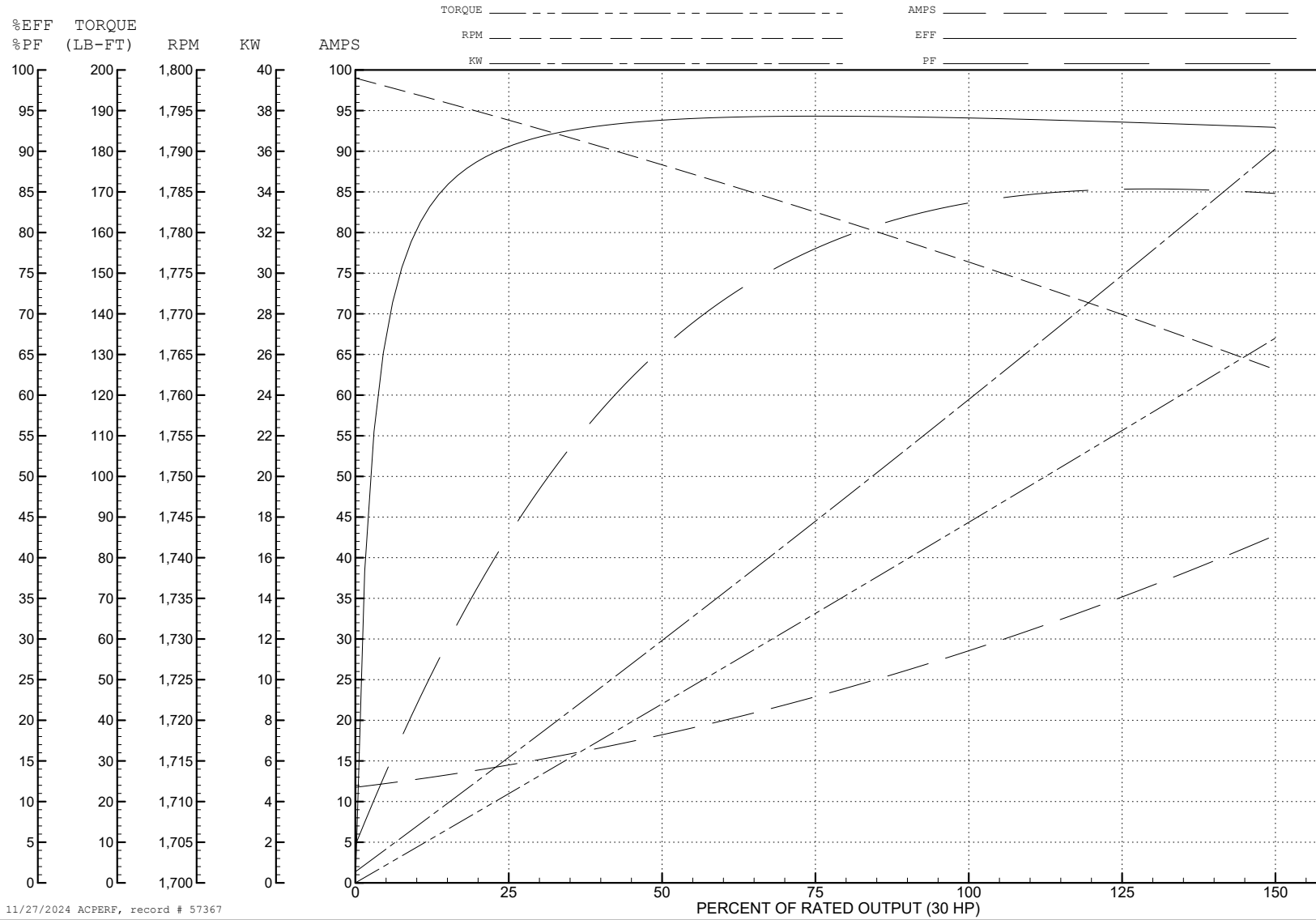
ABB Motors and Mechanical Inc.

WINDING # 40WX351

Typical performance - not guaranteed values.

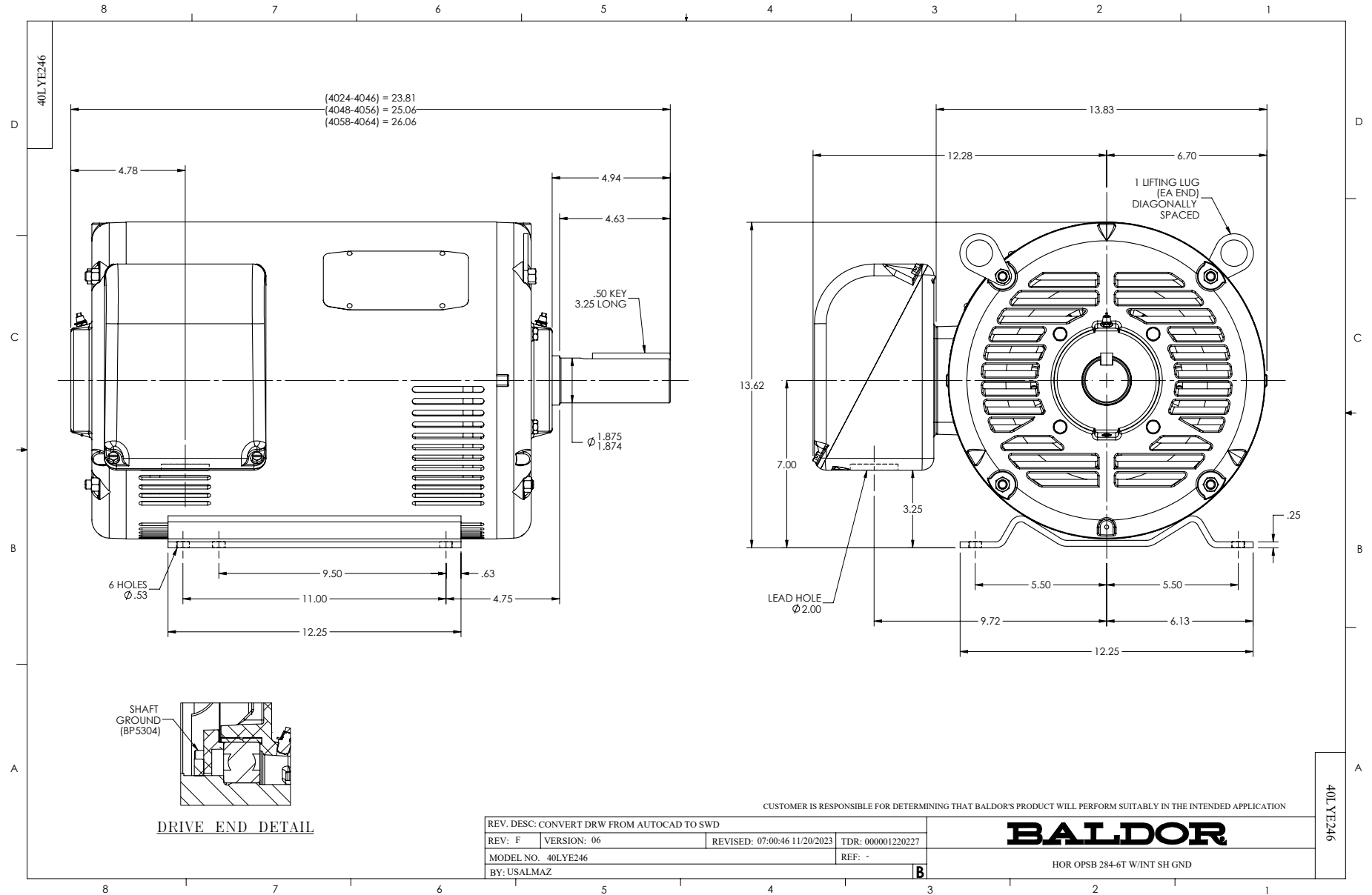
30 HP 3 PH 60 HZ 1775 RPM 575 V 4060M

TORQUES (LB-FT): PO=278 PU=129 LR=160 LRA=200



11/27/2024 ACPERF, record # 57367





CD0006



NOTES:

1. THREE LEAD MOTOR MAY BE EITHER WYE CONNECTED OR DELTA CONNECTED.
2. INTERCHANGE ANY TWO LINE LEADS TO REVERSE ROTATION.
3. OPTIONAL THERMOSTATS ARE PROVIDED WHEN SPECIFIED.
4. ACTUAL NUMBER OF INTERNAL PARALLEL CIRCUITS MAY VARY.
5. LEAD COLORS ARE OPTIONAL. LEADS MUST BE NUMBERED AS SHOWN.

CD0006

REV. DESC: ADD CLASS CONN00000007		
REV. LTR: E	VERSION: 01	TDR: 000001099922
FILE: \AAA\00005\141	REVISED: 10:24:49 02/19/2019	BY: ENBRIRO
MTL: -	© □	

**BALDOR - RELIANCE®**

3PH, SV, 3 LEADS, WYE OR DELTA CONNECTED

SH 1 of 1