

**BALDOR® • RELIANCE™**

---

# Customer information packet

## EM2535T-8

30HP, 1775RPM, 3PH, 60HZ, 286T, 4060M, OPSB, N

## Specifications

Enclosure	OPSB
Frame	286T
Frame Material	Steel
Frequency	60.00 Hz
Motor Letter Type	Three Phase
Output @ Frequency	30.000 HP @ 60 HZ
Phase	3
Synchronous Speed @ Frequency	1800 RPM @ 60 HZ
Voltage @ Frequency	200.0 V @ 60 HZ
Agency Approvals	CSA EEV NEMA PREMIUM NEMA_PREMIUM UR
Ambient Temperature	40 °C
Auxillary Box	No Auxillary Box
Auxillary Box Lead Termination	None
Base Indicator	Rigid
Bearing Grease Type	Polyrex EM (-20F +300F)
Blower	None
Current @ Voltage	83.000 A @ 200.0 V 83.000 A @ 208.0 V
Design Code	A
Drip Cover	No Drip Cover
Duty Rating	CONT
Efficiency @ 100% Load	94.1 %
Electrically Isolated Bearing	Not Electrically Isolated
Feedback Device	NO FEEDBACK
Front Shaft Indicator	None
Heater Indicator	No Heater
High Voltage Full Load Amps	83.0 a
Insulation Class	F
Inverter Code	Inverter Ready

## Part detail

Revision	C
Type	AC
Mech. spec.	40G48
Base	
Status	PRD/A
Elec. spec.	40WGX451
Layout	40LYG048
Eff. date	02-12-2024
CD Diagram	CD0695
Poles	04
Leads	6#6
Proprietary	False
Created date	07-07-2021

<b>KVA Code</b>	H
<b>Lifting Lugs</b>	Standard Lifting Lugs
<b>Locked Bearing Indicator</b>	No Locked Bearing
<b>Motor Lead Quantity/Wire Size</b>	6 @ 6 AWG
<b>Motor Lead Termination</b>	Flying Leads
<b>Motor Standards</b>	NEMA
<b>Motor Type</b>	4060M
<b>Mounting Arrangement</b>	F1
<b>Number of Poles</b>	4
<b>Overall Length</b>	26.06 IN
<b>Power Factor</b>	82
<b>Product Family</b>	General Purpose
<b>Pulley End Bearing Type</b>	Ball
<b>Pulley Face Code</b>	Standard
<b>Pulley Shaft Indicator</b>	Standard
<b>Rodent Screen</b>	None
<b>Service Factor</b>	1.15
<b>Shaft Diameter</b>	1.875 IN
<b>Shaft Ground Indicator</b>	No Shaft Grounding
<b>Shaft Rotation</b>	Reversible
<b>Shaft Slinger Indicator</b>	No Slinger
<b>Speed</b>	1775 rpm
<b>Speed Code</b>	Single Speed
<b>Starting Method</b>	Part Winding
<b>Thermal Device - Bearing</b>	None
<b>Thermal Device - Winding</b>	None
<b>Vibration Sensor Indicator</b>	No Vibration Sensor
<b>Winding Thermal 1</b>	None
<b>Winding Thermal 2</b>	None

**Nameplate**

**NP2138L**

<b>CAT.NO.</b>	EM2535T-8	<b>P/N</b>		<b>ENCLOSURE</b>	OPSB		
<b>SPEC.</b>	40G048X451	<b>CC</b>	010A	<b>FRAME</b>	286T	<b>S/N</b>	
<b>HP</b>	30	<b>CLASS</b>	F	<b>HZ</b>	60		
<b>RPM</b>	1775	<b>PH</b>	3	<b>DES</b>	A		
<b>VOLT</b>	200	<b>KVA-CODE</b>	H	<b>ODE BRG</b>	6309	<b>DE BRG</b>	6311
<b>AMP</b>	83						
<b>RATING</b>	40C AMB-CONT	<b>GREASE</b>	POLYREX EM				
<b>NEMA-NOM-EFF</b>	94.1	<b>PF</b>	82	<b>SER.F.</b>	1.15		
<b>HTR-VOLTS</b>		<b>HTR-AMPS</b>					

## Parts list

Part number	Description	Quantity
SA395203	SA 40G048X451	1.000 ea
RA385931	RA 40G048X451	1.000 ea
HA6361A01	LIFTING LUG FOR 37, 39 & 40 FRAME ZINC	2.000 ea
HA6017	CAST ADAPTER, 40,42 KOBX	1.000 ea
19XW3118A12	.31-18 X .75 HEX WASHER HEAD TAPTITE II	2.000 ea
HW1001A31	LOCKWASHER 5/16, ZINC PLT.591 OD, .319 I	2.000 ea
10CB3000SP	KOBX, CAST W/2.00 LEAD HOLE	1.000 ea
19XW3118A12	.31-18 X .75 HEX WASHER HEAD TAPTITE II	4.000 ea
WD1000B25	GND LUG, BURNDY L125HP OR T&B L125HP-BB	1.000 ea
19XW3118G08	.31-18X.50,HEX WSHR HD,TAPTITE 2,GREEN	1.000 ea
40EP3200A02	STD FREP OPEN 309 BRG	1.000 ea
HW5100A11	W3917-042 WVY WSHR (WB)	1.000 ea
40EP3200B05	STD PUEP OPEN 311 BRG	1.000 ea
XY3816A12	3/8-16 FINISHED NUT W/SERRATIONS	8.000 ea
10CB3500SP	CONDUIT BOX LID, CAST	1.000 ea
51XW2520A12	.25-20 X .75, TAPTITE II, HEX WSHR SLTD	4.000 ea
HW2501H28	KEY, 1/2 SQ X 3.250	1.000 ea
HW4500A03	GREASE FITTING, .125 NPT 1610(ALEMITE) 8	1.000 ea
HW4500A20	1/8NPT SL PIPE PLUG	1.000 ea
HA4051A00	PLASTIC CAP FOR GREASE FITTING	1.000 ea
MG1050Y01	CELEROL BALDOR GOLD *** NLA IN 5 GALLON	0.070 ga
MJ1000A02	GREASE, POLYREX EM EXXON	0.050 lb
HW4500A03	GREASE FITTING, .125 NPT 1610(ALEMITE) 8	1.000 ea
HW4500A20	1/8NPT SL PIPE PLUG	1.000 ea
HA4051A00	PLASTIC CAP FOR GREASE FITTING	1.000 ea
85XU0407S04	4X1/4 U DRIVE PIN STAINLESS	4.000 ea
40AD2002A01	LEXAN BAFFLE 40 FR OPEN	1.000 ea
40AD2002A01	LEXAN BAFFLE 40 FR OPEN	1.000 ea
HA3154A06	THRUBOLT STUD 3/8-16 X 19.500	4.000 ea
LB1624	COMBINED WARNING LABEL, ISO/ANSI PICTOGR	1.000 ea
LC0695	CONNECTION LABEL	1.000 ea

NP2138L	ALUM SUPER-E UL PREM CC (300	1.000 ea
40PA1000	PACKAGING GROUP	1.000 ea
MN416A01	TAG-INSTAL-MAINT no wire (2500bx)4/22	1.000 ea

**Accessories**

<b>Part number</b>	<b>Description</b>	<b>Multiplier</b>
40-1400	C FACE KIT	A8

**AC Induction Motor Performance Data**

Record # 89137

Typical performance - not guaranteed values

<b>Winding:</b> 40WGX451-R001		<b>Type:</b> 4060M		<b>Enclosure:</b> OPSB	
<b>Nameplate Data</b>			<b>200 V, 60 Hz: Single Voltage Motor</b>		
<b>Rated Output (HP)</b>	30	<b>Full Load Torque</b>	88.7 LB-FT		
<b>Volts</b>	200	<b>Start Configuration</b>	direct on line		
<b>Full Load Amps</b>	83	<b>Breakdown Torque</b>	281 LB-FT		
<b>R.P.M.</b>	1775	<b>Pull-up Torque</b>	131 LB-FT		
<b>Hz</b>	60 <b>Phase</b>	3	<b>Locked-rotor Torque</b>	162 LB-FT	
<b>NEMA Design Code</b>	A	<b>KVA Code</b>	H	<b>Starting Current</b>	581 A
<b>Service Factor (S.F.)</b>	1.15		<b>No-load Current</b>	35.3 A	
<b>NEMA Nom. Eff.</b>	94.1	<b>Power Factor</b>	82	<b>Line-line Res. @ 25°C</b>	0.0382 Ω
<b>Rating - Duty</b>	40C AMB-CONT		<b>Temp. Rise @ Rated Load</b>	29°C	
<b>S.F. Amps</b>			<b>Temp. Rise @ S.F. Load</b>	36°C	
			<b>Locked-rotor Power Factor</b>	31.2768	
			<b>Rotor inertia</b>	4.77 lb-ft <sup>2</sup>	

**Load Characteristics 200 V, 60 Hz, 30 HP**

<b>% of Rated Load</b>	<b>25</b>	<b>50</b>	<b>75</b>	<b>100</b>	<b>125</b>	<b>150</b>	<b>S.F.</b>
<b>Power Factor</b>	44	67	77	82	84	85	83
<b>Efficiency</b>	90.5	93.9	94.5	94.3	93.5	93.1	93.8
<b>Speed</b>	1794	1788	1783	1777	1770	1763	1773
<b>Line amperes</b>	40.6	51.6	66.7	83.4	102	122	94.6



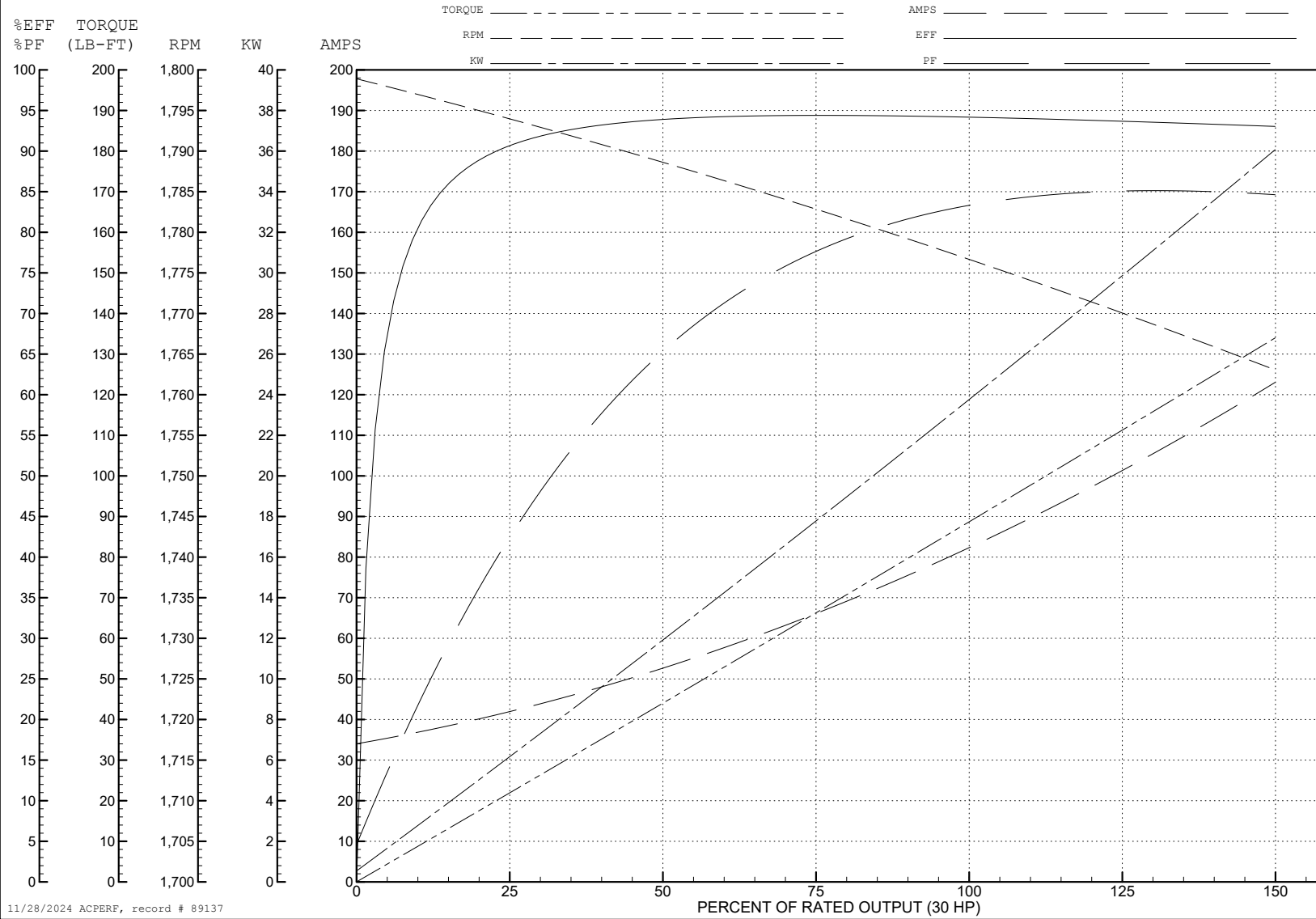
ABB Motors and Mechanical Inc.

WINDING # 40WGx451

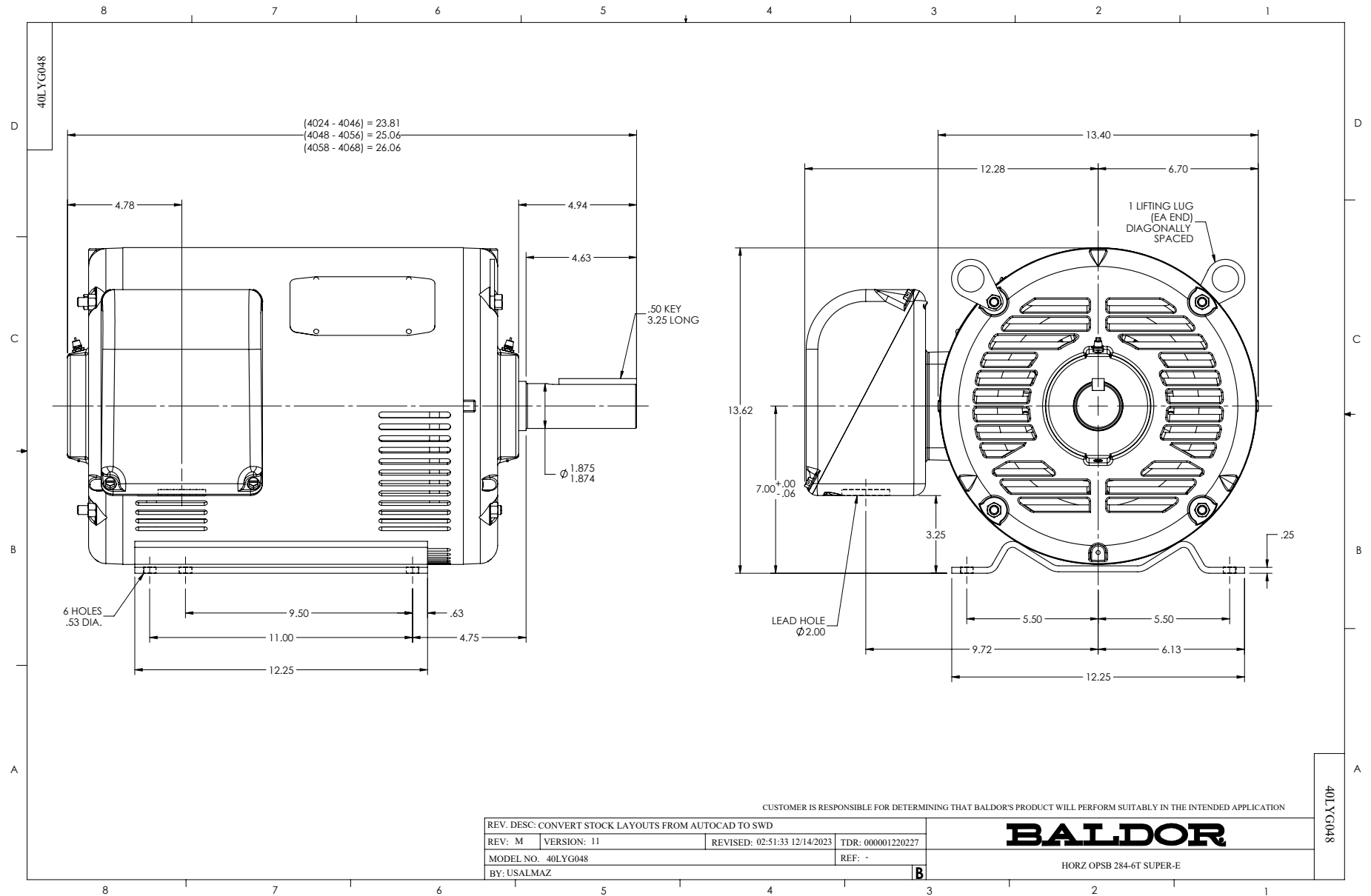
30 HP 3 PH 60 HZ 1775 RPM 200 V 4060M

Typical performance - not guaranteed values.

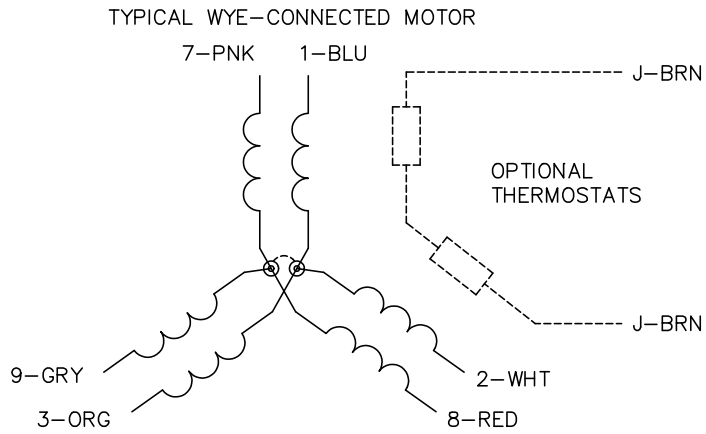
TORQUES (LB-FT): PO=281 PU=131 LR=162 LRA=581



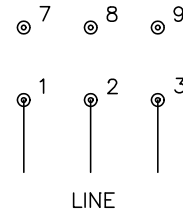
11/28/2024 ACPERF, record # 89137



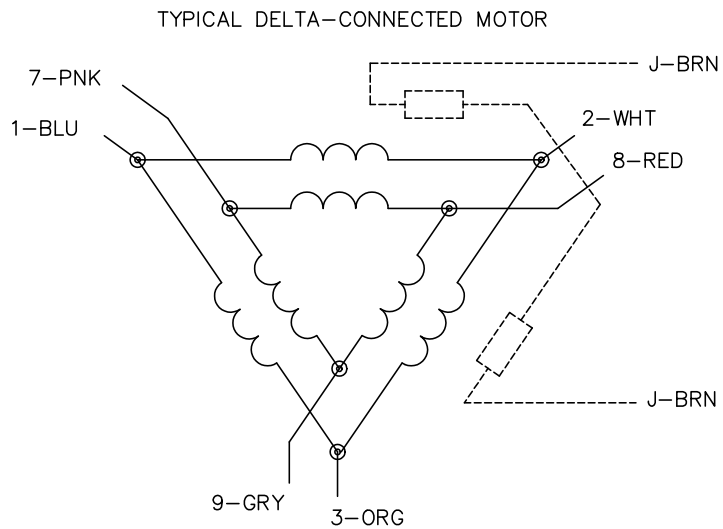
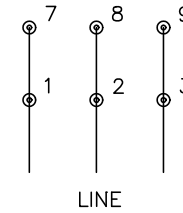
CD0695



START CONNECTION



RUN CONNECTION



NOTES:

1. MOTOR MAY BE WYE CONNECTED OR DELTA CONNECTED.
2. INTERCHANGE ANY TWO LINE LEADS TO REVERSE ROTATION.
3. OPTIONAL THERMOSTATS ARE PROVIDED WHEN SPECIFIED.
4. ACTUAL NUMBER OF INTERNAL PARALLEL CIRCUITS MAY VARY.
5. LEAD COLORS ARE OPTIONAL. LEADS MUST ALWAYS BE NUMBERED AS SHOWN.

CD0695

REV. DESC: REVISE TO SHOW OPTIONAL COLORS

REV. LTR: C

BY: JLP

REVISED: 01/21/99 3:19

TDR: 0171435

S69000

FILE: AAA00005151

MDL: -

MTL: -

BALDOR ELECTRIC Co.

3PH, SV, 6 LEADS, PART WINDING START