

BALDOR • RELIANCE

Customer information packet

EM2535T-8G

30HP, 1775RPM, 3PH, 60HZ, 286T, 4060M, OPSB, N

Copyright © All product information within this document is subject to ABB Motors and Mechanical Inc. copyright © protection, unless otherwise noted.

11/28/2024 1:44:03 AM

Specifications

Enclosure	OPSB
Frame	286T
Frame Material	Steel
Frequency	60.00 Hz
Motor Letter Type	Three Phase
Output @ Frequency	30.000 HP @ 60 HZ
Phase	3
Synchronous Speed @ Frequency	1800 RPM @ 60 HZ
Voltage @ Frequency	200.0 V @ 60 HZ
Agency Approvals	CSA CSA EEV NEMA PREMIUM UR
Ambient Temperature	40 °C
Auxillary Box	No Auxillary Box
Auxillary Box Lead Termination	None
Base Indicator	Rigid
Bearing Grease Type	Polyrex EM (-20F +300F)
Blower	None
Current @ Voltage	83.000 A @ 200.0 V 83.000 A @ 208.0 V
Design Code	A
Drip Cover	No Drip Cover
Duty Rating	CONT
Efficiency @ 100% Load	94.1 %
Electrically Isolated Bearing	Not Electrically Isolated
Feedback Device	NO FEEDBACK
Front Shaft Indicator	None
Heater Indicator	No Heater
High Voltage Full Load Amps	83.0 a
Insulation Class	H
Inverter Code	Inverter Ready

Part detail

Revision	E
Type	AC
Mech. spec.	40E246
Base	
Status	PRD/A
Elec. spec.	40WGX451
Layout	40LYE246
Eff. date	06-27-2024
CD Diagram	CD0695
Poles	04
Leads	6#6
Proprietary	False
Created date	07-07-2021

KVA Code	H
Lifting Lugs	Standard Lifting Lugs
Locked Bearing Indicator	No Locked Bearing
Motor Lead Quantity/Wire Size	6 @ 6 AWG
Motor Lead Termination	Flying Leads
Motor Standards	NEMA
Motor Type	4060M
Mounting Arrangement	F1
Number of Poles	4
Overall Length	26.06 IN
Power Factor	82
Product Family	General Purpose
Pulley End Bearing Type	Ball
Pulley Face Code	Standard
Pulley Shaft Indicator	Standard
Rodent Screen	None
Service Factor	1.15
Shaft Diameter	1.875 IN
Shaft Ground Indicator	Shaft Grounding
Shaft Rotation	Reversible
Shaft Slinger Indicator	No Slinger
Speed	1775 rpm
Speed Code	Single Speed
Starting Method	Part Winding
Thermal Device - Bearing	None
Thermal Device - Winding	None
Vibration Sensor Indicator	No Vibration Sensor
Winding Thermal 1	None
Winding Thermal 2	None

Nameplate

NP3554L

CAT.NO.	EM2535T-8G		P/N			ENCL	OPSB
SPEC.	40E246X451G1	CC	010A	FRAME	286T	SER.NO.	
HP	30	CLASS	H	HZ	60		
RPM	1775	PH	3	DES	A		
VOLTS	200	CODE	H	ODE BRG	6309	DE BRG	6311
AMPS	83						
RATING	40C AMB-CONT	NEMA-NOM-EFF	94.1	GREASE	POLYREX EM		
PF	82	SER.F.	1.15	VPWM INVERTER READY			
HTR-VOLTS	HTR-AMPS		MAX. SPACE HEATER TEMP.				

Parts list

Part number	Description	Quantity
SA395204	SA 40E246X451G1	1.000 ea
RA385932	RA 40E246X451G1	1.000 ea
HA6361A01	LIFTING LUG FOR 37, 39 & 40 FRAME ZINC	2.000 ea
HA6017	CAST ADAPTER, 40,42 KOBX	1.000 ea
19XW3118A12	.31-18 X .75 HEX WASHER HEAD TAPTITE II	2.000 ea
HW1001A31	LOCKWASHER 5/16, ZINC PLT.591 OD, .319 I	2.000 ea
10CB3000SP	KOBX, CAST W/2.00 LEAD HOLE	1.000 ea
19XW3118A12	.31-18 X .75 HEX WASHER HEAD TAPTITE II	4.000 ea
WD1000B25	GND LUG, BURNDY L125HP OR T&B L125HP-BB	1.000 ea
19XW3118G08	.31-18X.50,HEX WSHR HD,TAPTITE 2,GREEN	1.000 ea
40EP3200A02	STD FREP OPEN 309 BRG	1.000 ea
HW5100A11	W3917-042 WVY WSHR (WB)	1.000 ea
40EP3200B01	STD PUEP OPEN 311 LOCKED BRG W/AIR DEFLE	1.000 ea
10XN3118K40	5/16-18 X 2.25" HEX HD, GRADE 5	4.000 ea
HW1001A31	LOCKWASHER 5/16, ZINC PLT.591 OD, .319 I	4.000 ea
XY3816A12	3/8-16 FINISHED NUT W/SERRATIONS	8.000 ea
10CB3500SP	CONDUIT BOX LID, CAST	1.000 ea
51XW2520A12	.25-20 X .75, TAPTITE II, HEX WSHR SLTD	4.000 ea
HW2501H28	KEY, 1/2 SQ X 3.250	1.000 ea
HW4500A03	GREASE FITTING, .125 NPT 1610(ALEMITE) 8	1.000 ea
HW4500A20	1/8NPT SL PIPE PLUG	1.000 ea
HA4051A00	PLASTIC CAP FOR GREASE FITTING	1.000 ea
MG1050Y01	CELEROL BALDOR GOLD *** NLA IN 5 GALLON	0.070 ga
MJ1000A02	GREASE, POLYREX EM EXXON	0.050 lb
HW4500A03	GREASE FITTING, .125 NPT 1610(ALEMITE) 8	1.000 ea
HW4500A20	1/8NPT SL PIPE PLUG	1.000 ea
HA4051A00	PLASTIC CAP FOR GREASE FITTING	1.000 ea
85XU0407S04	4X1/4 U DRIVE PIN STAINLESS	4.000 ea
40AD2002A01	LEXAN BAFFLE 40 FR OPEN	1.000 ea
HA3154A06	THRUBOLT STUD 3/8-16 X 19.500	4.000 ea
LB1624	COMBINED WARNING LABEL, ISO/ANSI PICTOGR	1.000 ea

40AD2002A01	LEXAN BAFFLE 40 FR OPEN	1.000 ea
LC0695	CONNECTION LABEL	1.000 ea
NP3554L	SS SUPER-E,CURUS-EEV,NEMA PREM,CC,300 SR	1.000 ea
40PA1000	PACKAGING GROUP	1.000 ea
MN416A01	TAG-INSTAL-MAINT no wire (2500bx)4/22	1.000 ea
LB1350	BAR CODE LABEL FOR YORK	1.000 ea

AC Induction Motor Performance Data

Record # 89138

Typical performance - not guaranteed values

Winding: 40WGX451-R002		Type: 4060M		Enclosure: OPSB	
Nameplate Data			200 V, 60 Hz: Single Voltage Motor		
Rated Output (HP)	30	Full Load Torque	88.7 LB-FT		
Volts	200	Start Configuration	direct on line		
Full Load Amps	83	Breakdown Torque	281 LB-FT		
R.P.M.	1775	Pull-up Torque	131 LB-FT		
Hz	60 Phase	Locked-rotor Torque	162 LB-FT		
NEMA Design Code	A KVA Code	Starting Current	581 A		
Service Factor (S.F.)	1.15	No-load Current	35.3 A		
NEMA Nom. Eff.	94.1 Power Factor	Line-line Res. @ 25°C	0.0382 Ω		
Rating - Duty	40C AMB-CONT	Temp. Rise @ Rated Load	29°C		
S.F. Amps		Temp. Rise @ S.F. Load	36°C		
		Locked-rotor Power Factor	31.2768		
		Rotor inertia	4.77 lb-ft ²		

Load Characteristics 200 V, 60 Hz, 30 HP

% of Rated Load	25	50	75	100	125	150	S.F.
Power Factor	44	67	77	82	84	85	83
Efficiency	90.5	93.9	94.5	94.3	93.5	93.1	93.8
Speed	1794	1788	1783	1777	1770	1763	1773
Line amperes	40.6	51.6	66.7	83.4	102	122	94.6

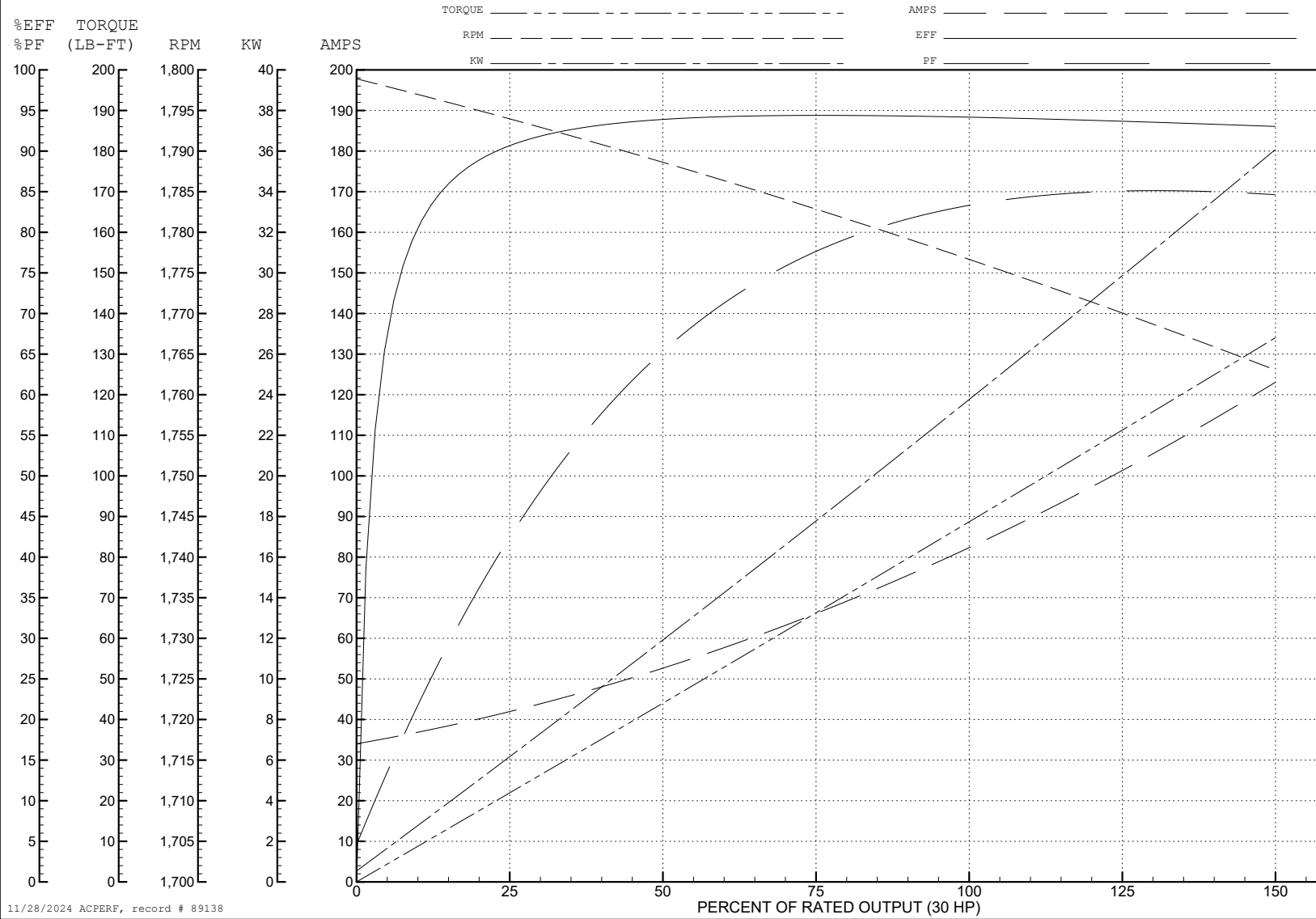
ABB Motors and Mechanical Inc.

WINDING # 40WGx451

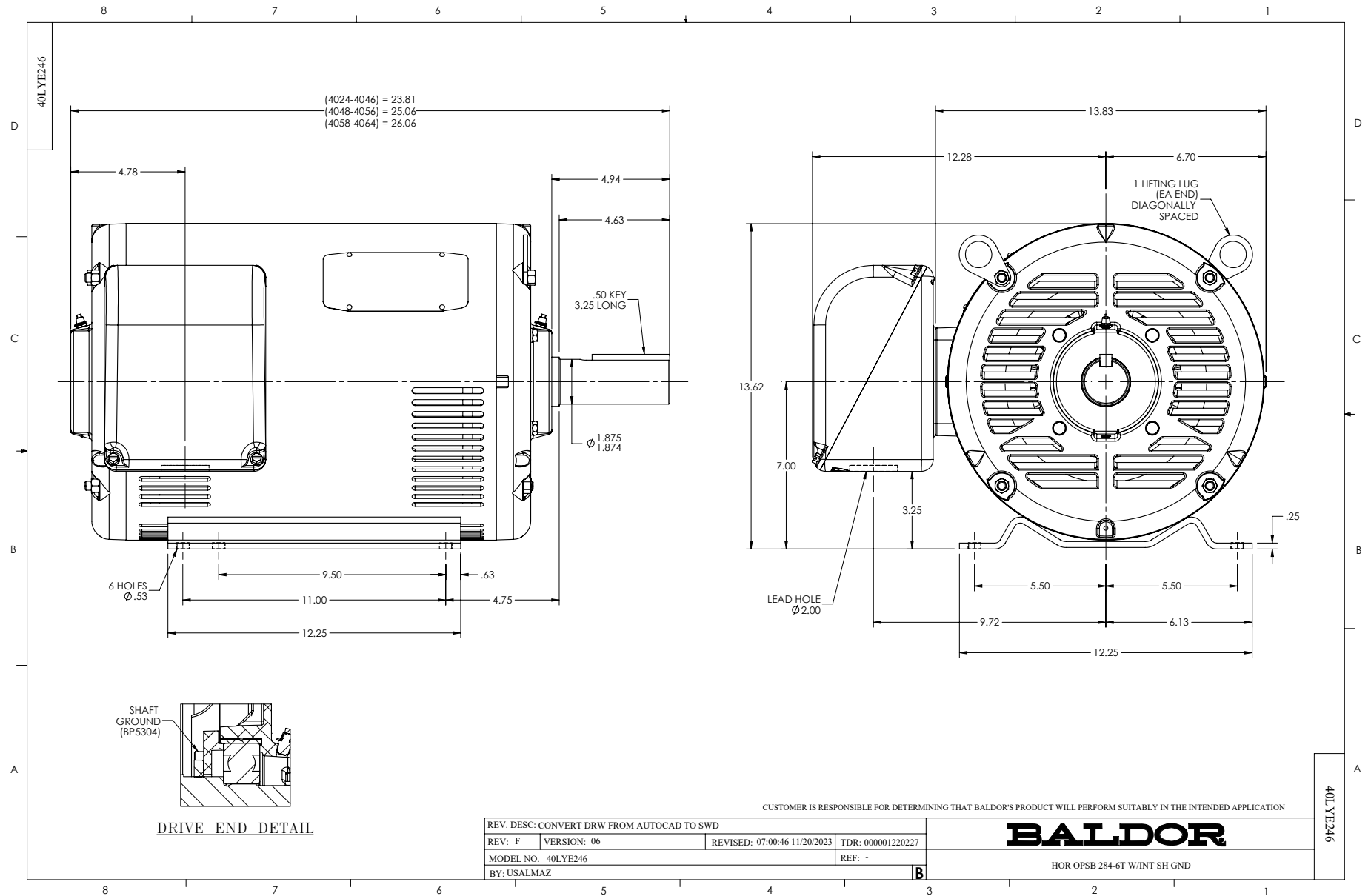
30 HP 3 PH 60 HZ 1775 RPM 200 V 4060M

Typical performance - not guaranteed values.

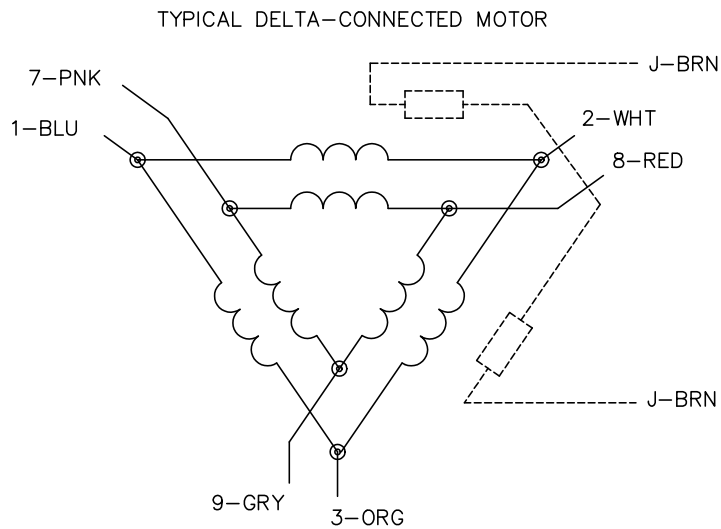
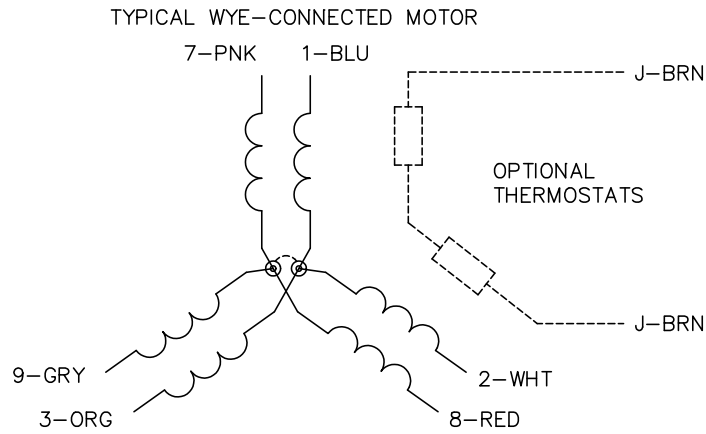
TORQUES (LB-FT): PO=281 PU=131 LR=162 LRA=581



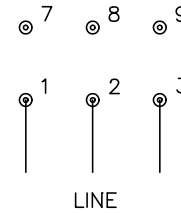
11/28/2024 ACPERF, record # 89138



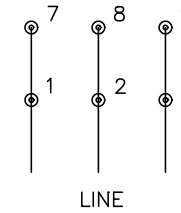
CD0695



START CONNECTION



RUN CONNECTION



NOTES:

1. MOTOR MAY BE WYE CONNECTED OR DELTA CONNECTED.
2. INTERCHANGE ANY TWO LINE LEADS TO REVERSE ROTATION.
3. OPTIONAL THERMOSTATS ARE PROVIDED WHEN SPECIFIED.
4. ACTUAL NUMBER OF INTERNAL PARALLEL CIRCUITS MAY VARY.
5. LEAD COLORS ARE OPTIONAL. LEADS MUST ALWAYS BE NUMBERED AS SHOWN.

CD0695

REV. DESC: REVISE TO SHOW OPTIONAL COLORS			
REV. LTR: C	BY: JLP	REVISED: 01/21/99 3:19	TDR: 0171435
S69000		FILE: AAA00005151	MDL: -
		MTL: -	

BALDOR ELECTRIC Co.

3PH, SV, 6 LEADS, PART WINDING START