

BALDOR • RELIANCE

Customer information packet

EM2554T-4

125HP, 3540RPM, 3PH, 60HZ, 404TS, 4476M, OPSB

Specifications

Enclosure	OPSB
Frame	404TS
Frame Material	Steel
Frequency	60.00 Hz
Motor Letter Type	Three Phase
Output @ Frequency	125.000 HP @ 60 HZ
Phase	3
Synchronous Speed @ Frequency	3600 RPM @ 60 HZ
Voltage @ Frequency	460.0 V @ 60 HZ
Agency Approvals	CSA EEV UR NEMA_PREMIUM NEMA PREMIUM
Ambient Temperature	40 °C
Auxillary Box	No Auxillary Box
Auxillary Box Lead Termination	None
Base Indicator	Rigid
Bearing Grease Type	Polyrex EM (-20F +300F)
Blower	None
Current @ Voltage	143.000 A @ 460.0 V
Design Code	B
Drip Cover	No Drip Cover
Duty Rating	CONT
Efficiency @ 100% Load	94.1 %
Electrically Isolated Bearing	Not Electrically Isolated
Feedback Device	NO FEEDBACK
Front Face Code	Standard
Front Shaft Indicator	None
Heater Indicator	No Heater
High Voltage Full Load Amps	143.0 a
Insulation Class	F
Inverter Code	Inverter Ready

Part detail

Revision	U
Type	AC
Mech. spec.	44E194
Base	
Status	PRD/A
Elec. spec.	44WGW324
Layout	44LYE194
Eff. date	11-19-2024
CD Diagram	CD0382
Poles	02
Leads	6#6
Proprietary	False
Created date	11-05-2010

IP Rating	NONE
KVA Code	G
Lifting Lugs	Standard Lifting Lugs
Locked Bearing Indicator	Locked Bearing
Motor Lead Exit	Ko Box
Motor Lead Quantity/Wire Size	6 @ 6 AWG
Motor Lead Termination	Flying Leads
Motor Standards	NEMA
Motor Type	4476M
Mounting Arrangement	F1
Number of Poles	2
Overall Length	31.85 IN
Power Factor	88
Product Family	General Purpose
Pulley End Bearing Type	Ball
Pulley Face Code	Standard
Pulley Shaft Indicator	Standard
Rodent Screen	None
Service Factor	1.15
Shaft Diameter	2.125 IN
Shaft Extension Location	Pulley End
Shaft Ground Indicator	No Shaft Grounding
Shaft Rotation	Reversible
Shaft Slinger Indicator	No Slinger
Speed	3540 rpm
Speed Code	Single Speed
Starting Method	Wye Start - Delta Run
Thermal Device - Bearing	None
Thermal Device - Winding	None
Vibration Sensor Indicator	No Vibration Sensor
Winding Thermal 1	None
Winding Thermal 2	None

Nameplate

NP2138LUA

CAT.NO.	EM2554T-4	P/N		ENCLOSURE	OPSB
SPEC.	44E194W324	CC	010A	FRAME	404TS
HP	125	CLASS	F	HZ	60
RPM	3540	PH	3	DES	B
VOLT	460	KVA-CODE	G	ODE BRG	6312
AMP	143	DE BRG	6312		
RATING	40C AMB-CONT	GREASE	POLYREX EM		
NEMA-NOM-EFF	94.1	PF	88	SER.F.	1.15
	50Hz 125Hp 190/380V 236/118A			SF	1.0
HTR-VOLTS		HTR-AMPS			

Parts list

Part number	Description	Quantity
SA210274	SA 44E194W324	1.000 ea
RA197532	RA 44E194W324	1.000 ea
HA6731	LIFTING LUG FOR 44 FRAME MOTORS.	2.000 ea
HA6648A01	CAST ADAPTER, 44 FRAME - NEMA 404-5 - MA	1.000 ea
19XW3816A12	.38-16 X .75 HEX WASHER HEAD TAPTITE II	2.000 ea
HW1001A38	LOCKWASHER 3/8, ZINC PLT .688 OD, .382 I	2.000 ea
18CB1006A04	CB 318 3.62 LD HOLE, .38 MTG HOLE & 3.88	1.000 ea
19XW3118A16	.31-18 HEX WASHER HEAD TAPTITE II 1.00 L	4.000 ea
HW1001A31	LOCKWASHER 5/16, ZINC PLT.591 OD, .319 I	4.000 ea
WD1000B25	GND LUG, BURNDY L125HP OR T&B L125HP-BB	1.000 ea
10XN3118K08	5/16-18 X .50 GRADE #5, STL, ZINC PLATE	1.000 ea
HW1001A31	LOCKWASHER 5/16, ZINC PLT.591 OD, .319 I	1.000 ea
44EP1203A02	FREP, MACH	1.000 ea
HW5100A15	W4997-050 WVY WSHR (WB)	1.000 ea
10XN3118K40	5/16-18 X 2.75" HEX HD, GRADE 5	4.000 ea
HW1001A31	LOCKWASHER 5/16, ZINC PLT.591 OD, .319 I	4.000 ea
44EP1203A11	PU ENDPLATE, MACH	1.000 ea
XY5013A12	NUT,1/2-13,HEX,STEEL,ZINCPLATED	8.000 ea
18CB1506A01	CB LID 318 FOR 18CB1006	1.000 ea
10XN3118K16	5/16-18 X 1' GRADE #5, STL, ZINC PLATE	4.000 ea
HW1001A31	LOCKWASHER 5/16, ZINC PLT.591 OD, .319 I	4.000 ea
HW2501H24	KEY, 1/2 SQ X 2.750	1.000 ea
MN416A01	TAG-INSTAL-MAINT no wire (2500bx)4/22	1.000 ea
44AD2001A02	BAFFLE 44 OPEN,"X"=1.50, SLOTTED BAND MT	1.000 ea
HW4500A03	GREASE FITTING, .125 NPT 1610(ALEMITE) 8	1.000 ea
HW4500A20	1/8NPT SL PIPE PLUG	1.000 ea
HA4051A00	PLASTIC CAP FOR GREASE FITTING	1.000 ea
HA3175A04	THRUBOLT STUD 1/2-13 X 26.000 - GRADE 2	4.000 ea
MG1050Y01	CELEROL BALDOR GOLD *** NLA IN 5 GALLON	0.080 ga
MJ1000A02	GREASE, POLYREX EM EXXON	0.030 lb
44AD2001A02	BAFFLE 44 OPEN,"X"=1.50, SLOTTED BAND MT	1.000 ea

HW4500A03	GREASE FITTING, .125 NPT 1610(ALEMITE) 8	1.000 ea
HW4500A20	1/8NPT SL PIPE PLUG	1.000 ea
HA4051A00	PLASTIC CAP FOR GREASE FITTING	1.000 ea
85XU0407S04	4X1/4 U DRIVE PIN STAINLESS	4.000 ea
LB1624	COMBINED WARNING LABEL, ISO/ANSI PICTOGR	1.000 ea
LC0382	CONNECTION LABEL	1.000 ea
NP2138LUA	ALUM SUPER-E UL PREM CC (300SER)	1.000 ea
44PA2000	PKGP, CTN ID 42X34X25, STD BASE	1.000 ea

AC Induction Motor Performance Data

Record # 33221

Typical performance - not guaranteed values

Winding: 44WGW324-R001		Type: 4476M		Enclosure: OPSB	
Nameplate Data			460 V, 60 Hz: Single Voltage Motor		
Rated Output (HP)	125	Full Load Torque	187 LB-FT		
Volts	460	Start Configuration	direct on line		
Full Load Amps	143	Breakdown Torque	554 LB-FT		
R.P.M.	3540	Pull-up Torque	197 LB-FT		
Hz	60 Phase	3	Locked-rotor Torque	295 LB-FT	
NEMA Design Code	B KVA Code	G	Starting Current	893 A	
Service Factor (S.F.)		1.15	No-load Current	35.7 A	
NEMA Nom. Eff.	94.1 Power Factor	88	Line-line Res. @ 25°C	0.038466 Ω	
Rating - Duty	40C AMB-CONT		Temp. Rise @ Rated Load	39°C	
S.F. Amps			Temp. Rise @ S.F. Load	48°C	
			Locked-rotor Power Factor	17.2	
			Rotor inertia	9.94 LB-FT ²	

Load Characteristics 460 V, 60 Hz, 125 HP

% of Rated Load	25	50	75	100	125	150	S.F.
Power Factor	65	83	87	88	89	88	89
Efficiency	91.9	94.5	94.7	94.3	93.7	92.8	93.9
Speed	3588.6	3581.9	3573.7	3564.4	3553.5	3541.5	3558
Line amperes	51	78.3	108	143	179	217	165

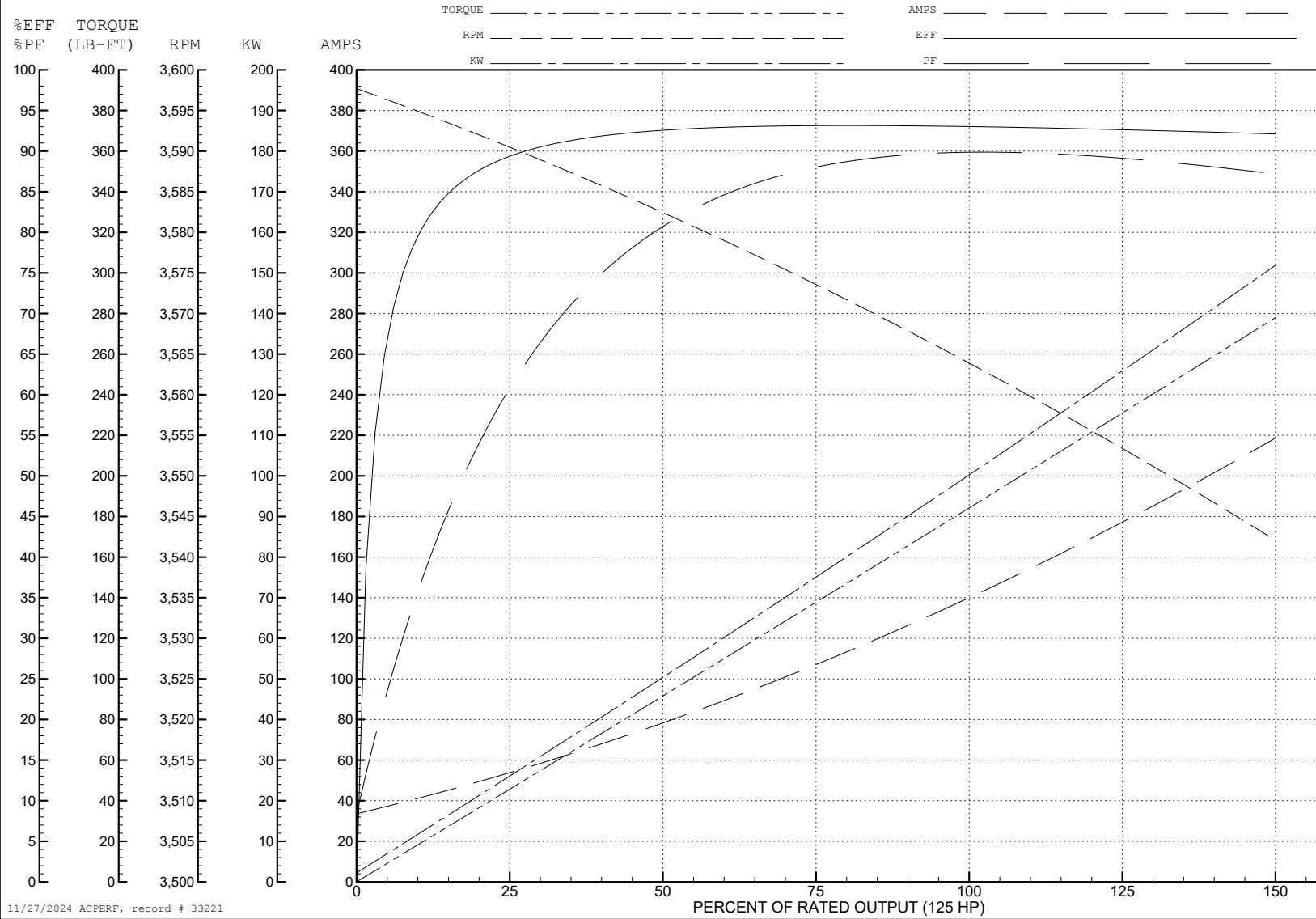
ABB Motors and Mechanical Inc.

WINDING # 44WG324

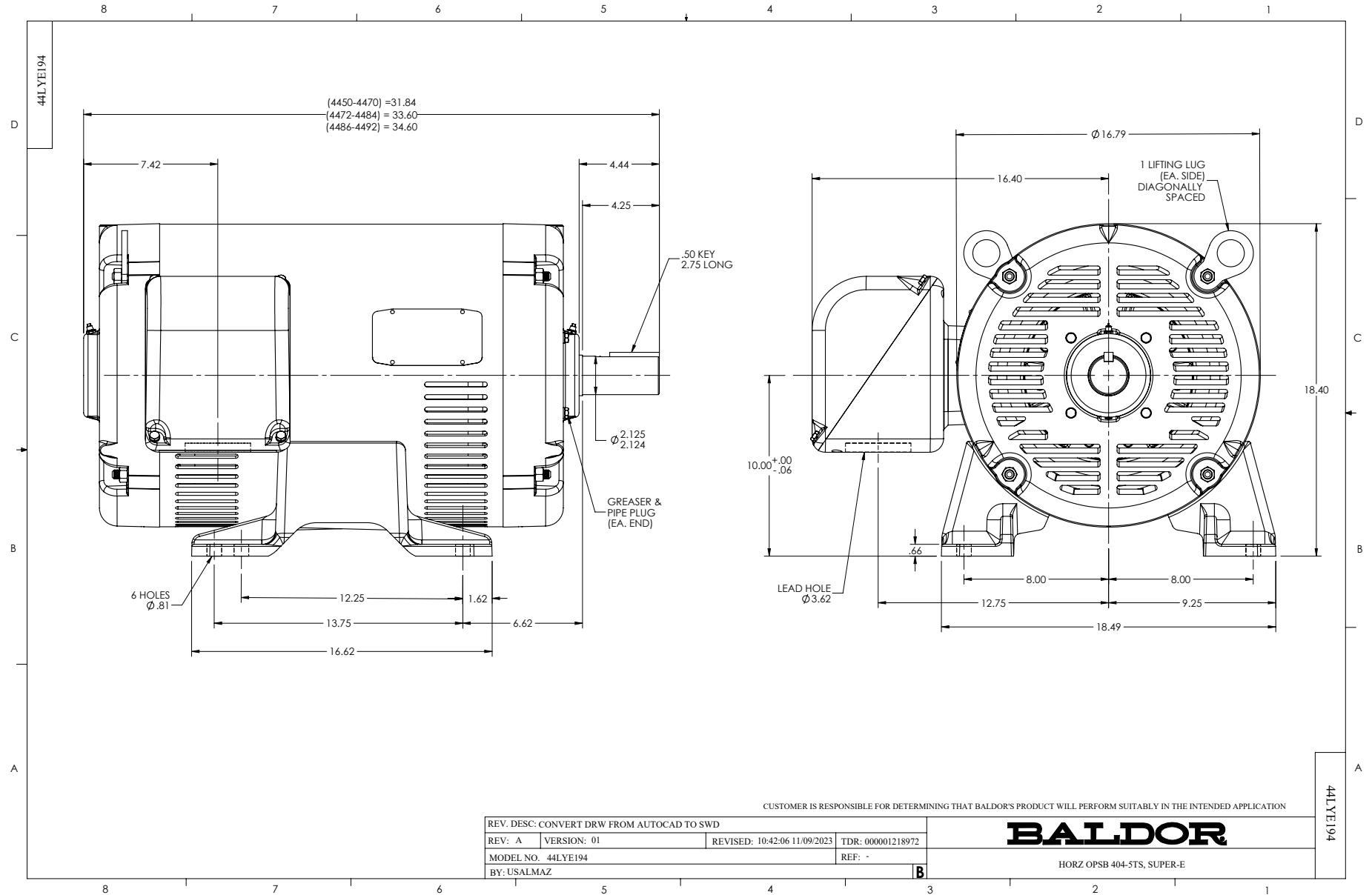
125 HP 3 PH 60 HZ 3540 RPM 460 V 4476M

Typical performance - not guaranteed values.

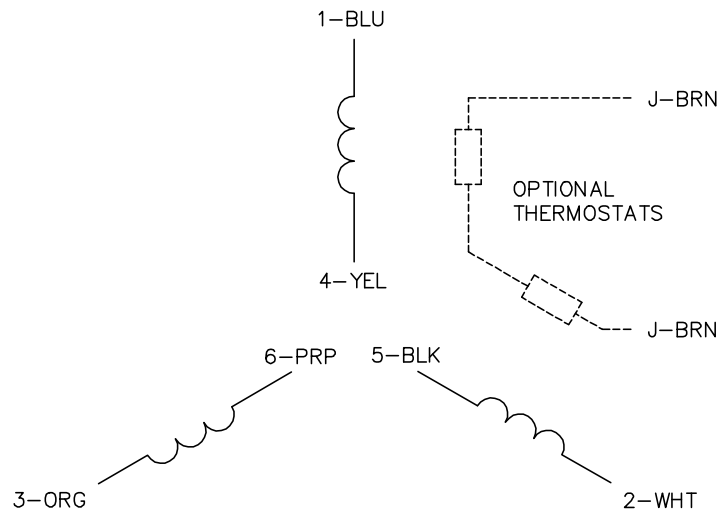
TORQUES (LB-FT): PO=554 PU=197 LR=295 LRA=893



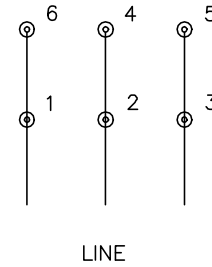
11/27/2024 ACPERF, record # 33221



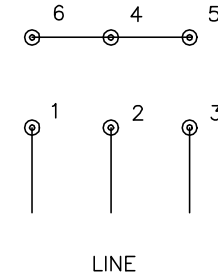
CD0382



RUN CONNECTION (1D)



START CONNECTION (1Y)



NOTES:

1. INTERCHANGE ANY TWO LINE LEADS TO REVERSE ROTATION.
2. OPTIONAL THERMOSTATS ARE PROVIDED WHEN SPECIFIED.
3. ACTUAL NUMBER OF INTERNAL PARALLEL CIRCUITS MAY BE A MULTIPLE OF THOSE SHOWN ABOVE.
4. LEAD COLORS ARE OPTIONAL. LEADS MUST ALWAYS BE NUMBERED AS SHOWN.
5. FOR ACROSS-THE-LINE STARTING, USE 'RUN' CONNECTION.

CD0382

REV. DESC: ADD CLASS CONN00000007		
REV. LTR: F	VERSION: 01	TDR: 000001099922
FILE: \AAA\00005\243	REVISED: 09:05:32 02/19/2019	BY: ENBRIRO
MTL: -	© □	

BALDOR - RELIANCE®

3PH, SV, 6 LEADS, Y START/D RUN

SH 1 of 1