



---

# Customer information packet

## EM30008

.33HP, 1140RPM, 3PH, 60HZ, 48, 3421M, OPEN, F1

Class - None

Division - Not Applicable

## Specifications

Enclosure	OPEN
Frame	48
Frame Material	Steel
Frequency	60.00 Hz
Haz Area Class and Group	None
Haz Area Division	Not Applicable
Motor Letter Type	Three Phase
Output @ Frequency	.330 HP @ 60 HZ
Phase	3
Synchronous Speed @ Frequency	1200 RPM @ 60 HZ
Voltage @ Frequency	230.0 V @ 60 HZ 460.0 V @ 60 HZ
Agency Approvals	CURUSEEV
Ambient Temperature	40 °C
Auxillary Box	No Auxillary Box
Auxillary Box Lead Termination	None
Base Indicator	Rigid
Bearing Grease Type	Polyrex EM (-20F +300F)
Blower	None
Current @ Voltage	.900 A @ 460.0 V 1.600 A @ 208.0 V 1.900 A @ 230.0 V
Design Code	B
Drip Cover	No Drip Cover
Duty Rating	CONT
Efficiency @ 100% Load	71.4 %
Electrically Isolated Bearing	Not Electrically Isolated
Feedback Device	NO FEEDBACK
Front Face Code	Standard
Front Shaft Indicator	None
Heater Indicator	No Heater
High Voltage Full Load Amps	0.9 a

## Part detail

Revision	F
Type	AC
Mech. spec.	34F002
Base	
Status	PRD/A
Elec. spec.	34WGR139
Layout	34LYF002
Eff. date	10-29-2024
CD Diagram	CD0005
Poles	06
Leads	9#18
Proprietary	False
Created date	10-03-2014

<b>Insulation Class</b>	B
<b>Inverter Code</b>	Not Inverter
<b>KVA Code</b>	M
<b>Lifting Lugs</b>	No Lifting Lugs
<b>Locked Bearing Indicator</b>	No Locked Bearing
<b>Motor Lead Exit</b>	Ko Box
<b>Motor Lead Quantity/Wire Size</b>	9 @ 18 AWG
<b>Motor Lead Termination</b>	Flying Leads
<b>Motor Standards</b>	NEMA
<b>Motor Type</b>	3421M
<b>Mounting Arrangement</b>	F1
<b>Number of Poles</b>	6
<b>Overall Length</b>	9.75 IN
<b>Power Factor</b>	51
<b>Product Family</b>	General Purpose
<b>Pulley End Bearing Type</b>	Ball
<b>Pulley Face Code</b>	Standard
<b>Pulley Shaft Indicator</b>	Standard
<b>Rodent Screen</b>	None
<b>RoHS Status</b>	ROHS COMPLIANT
<b>Service Factor</b>	1.35
<b>Shaft Diameter</b>	0.500 IN
<b>Shaft Extension Location</b>	Pulley End
<b>Shaft Ground Indicator</b>	No Shaft Grounding
<b>Shaft Rotation</b>	Reversible
<b>Shaft Slinger Indicator</b>	No Slinger
<b>Speed</b>	1140 rpm
<b>Speed Code</b>	Single Speed
<b>Starting Method</b>	Direct on line
<b>Thermal Device - Bearing</b>	None
<b>Thermal Device - Winding</b>	None
<b>Vibration Sensor Indicator</b>	No Vibration Sensor
<b>Winding Thermal 1</b>	None
<b>Winding Thermal 2</b>	None

**Nameplate**

NP3155L									
<b>CAT.NO.</b>	EM30008								
<b>SPEC.</b>	34F002R139G1								
<b>HP</b>	.33								
<b>VOLTS</b>	230/460								
<b>AMP</b>	1.9/.9								
<b>RPM</b>	1140								
<b>FRAME</b>	48		<b>HZ</b>	60		<b>PH</b>	3		
<b>SER.F.</b>	1.35	<b>CODE</b>	M	<b>DES</b>	B	<b>CL</b>	B		
<b>F.L. AVG. EFF.</b>	71.4	<b>PF</b>	51						
<b>RATING</b>	40C AMB-CONT								
<b>CC</b>									
<b>DE</b>	6203		<b>ODE</b>	6203					
<b>ENCL</b>	OPEN	<b>SN</b>							
	SFA 2/1								

## Parts list

Part number	Description	Quantity
SA287916	SA 34F002R139G1	1.000 ea
RA274119	RA 34F002R139G1	1.000 ea
NS2512A01	INSULATOR, CONDUIT BOX X	1.000 ea
34CB3002A	CB CAST W/.88 DIA HOLE	1.000 ea
51XB1016A07	10-16 X 7/16 HXWSSLD SERTYB	2.000 ea
11XW1032G06	10-32 X .38, TAPTITE II, HEX WSHR SLTD U	1.000 ea
34EP3210A01SP	FR ENDPLATE, MACH	1.000 ea
HW5100A03	WAVY WASHER (W1543-017)	1.000 ea
34EP3212A02	PU ENDPLATE, MODEL 34 OPEN	1.000 ea
XY1032A02	10-32 HEX NUT DIRECTIONAL SERRATION	4.000 ea
34CB4517	CB LID 4 MTG HOLES .22 DIA STAMPED, FOR	1.000 ea
51XW0832A07	8-32 X .44, TAPTITE II, HEX WSHR SLTD SE	4.000 ea
MG1050Y01	CELEROL BALDOR GOLD *** NLA IN 5 GALLON	0.014 ga
85XU0407S04	4X1/4 U DRIVE PIN STAINLESS	2.000 ea
HA3100A44	THRUBOLT 10-32 X 8.000	4.000 ea
LC0005	CONN.DIA.,TY M,9-LD,DUAL VOLT,REVERSING	1.000 ea
MN416A01	TAG-INSTAL-MAINT no wire (2500bx)4/22	1.000 ea
NP3155L	ALUM SUPER-E UL CC "SEMS"	1.000 ea
34PA1002	PKG GRP, PRINT PK1001A01	1.000 ea
LB1624	COMBINED WARNING LABEL, ISO/ANSI PICTOGR	1.000 ea

**AC Induction Motor Performance Data**

Record # 47463

Typical performance - not guaranteed values

Winding: 34WGR139-R002			Type: 3421M			Enclosure: OPEN		
<b>Nameplate Data</b>						<b>460 V, 60 Hz: High Voltage Connection</b>		
Rated Output (HP)			.33	Full Load Torque	1.55 LB-FT			
Volts			230/460	Start Configuration	direct on line			
Full Load Amps			1.9/.9	Breakdown Torque	6.67 LB-FT			
R.P.M.			1140	Pull-up Torque	4.76 LB-FT			
Hz	60	Phase	3	Locked-rotor Torque	6.04 LB-FT			
NEMA Design Code	B	KVA Code	M	Starting Current	4.63 A			
Service Factor (S.F.)			1.35	No-load Current	0.717 A			
NEMA Nom. Eff.	71.4	Power Factor	51	Line-line Res. @ 25°C	39.9 Ω			
Rating - Duty			40C AMB-CONT	Temp. Rise @ Rated Load	38°C			
S.F. Amps			2/1	Temp. Rise @ S.F. Load	46°C			
				Locked-rotor Power Factor	61			
				Rotor inertia	0.0499 LB-FT <sup>2</sup>			

**Load Characteristics 460 V, 60 Hz, 0.33 HP**

% of Rated Load	25	50	75	100	125	150	S.F.
Power Factor	22	33	43	51	58	64	60
Efficiency	49.7	64.3	69.7	72.5	72.8	72.9	72.8
Speed	1189	1179	1168	1156	1142	1128	1136
Line amperes	0.733	0.758	0.806	0.864	0.925	1.01	0.959

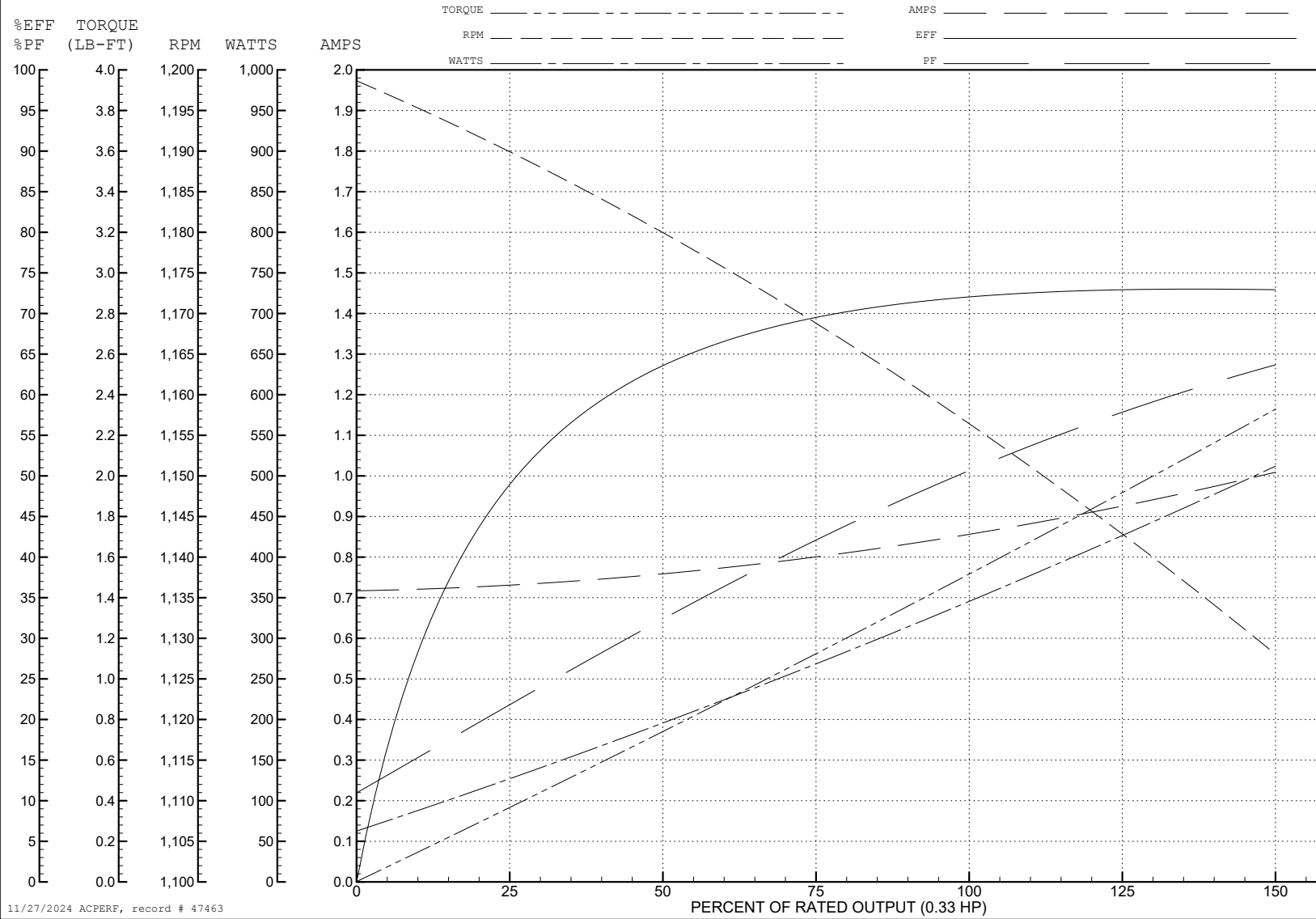
ABB Motors and Mechanical Inc.

WINDING # 34WGR139

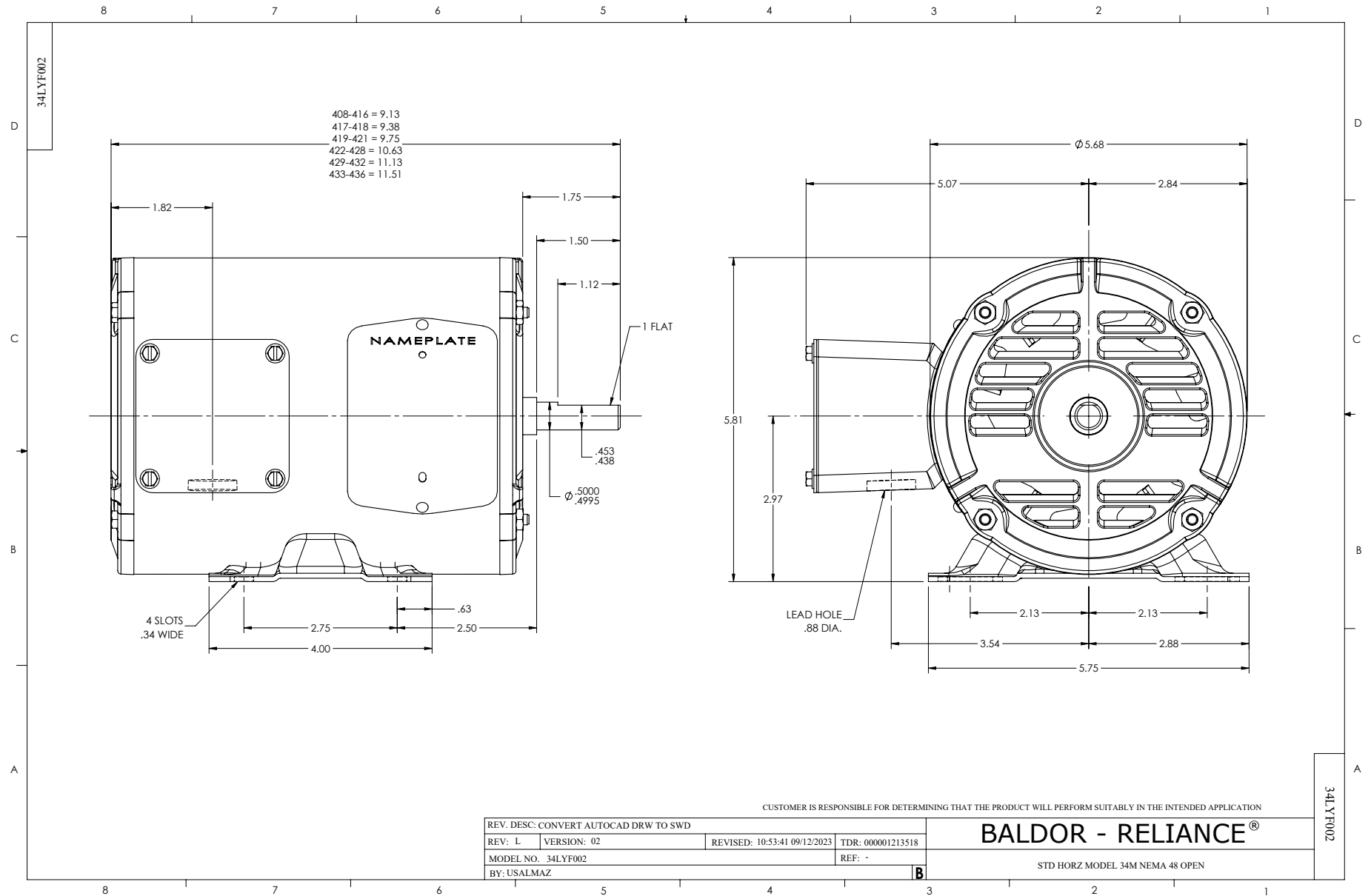
Typical performance - not guaranteed values.

0.33 HP 3 PH 60 HZ 1140 RPM 460 V 3421M

TORQUES (LB-FT): PO=6.67 PU=4.76 LR=6.04 LRA=4.63

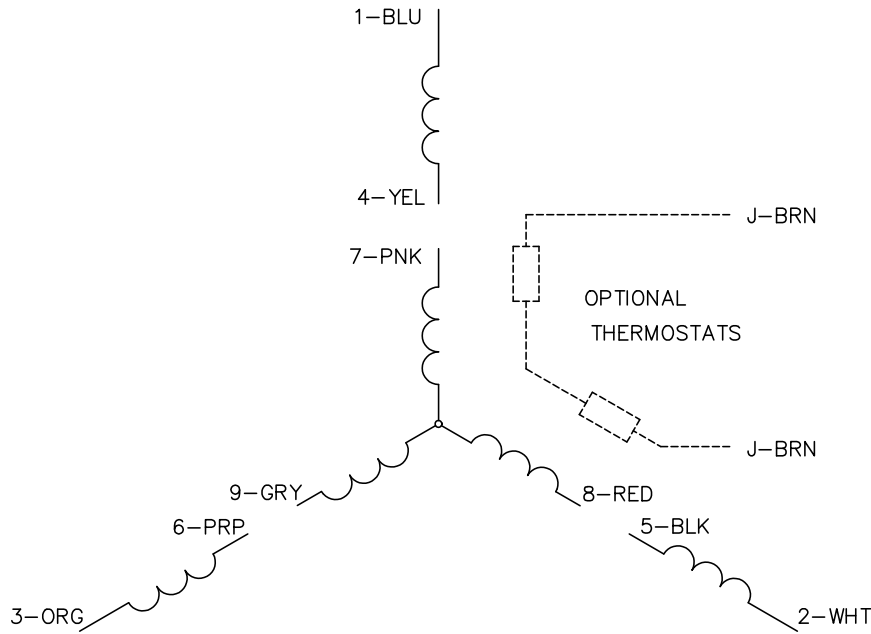


11/27/2024 ACPERF, record # 47463

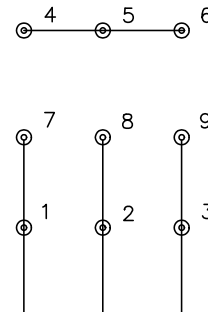




CD0005

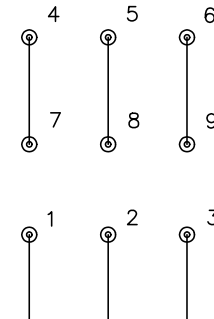


LOW VOLTAGE  
(2Y)



LINE

HIGH VOLTAGE  
(1Y)



LINE

NOTES:

1. INTERCHANGE ANY TWO LINE LEADS TO REVERSE ROTATION.
2. OPTIONAL THERMOSTATS ARE PROVIDED WHEN SPECIFIED.
3. ACTUAL NUMBER OF INTERNAL PARALLEL CIRCUITS MAY BE A MULTIPLE OF THOSE SHOWN ABOVE.
4. LEAD COLORS ARE OPTIONAL. LEADS MUST ALWAYS BE NUMBERED AS SHOWN.

CD0005

REV. DESC: REVISE TO SHOW OPTIONAL COLORS			
REV. LTR: E	BY: JLP	REVISED: 01/19/99 10:15	TDR: 0171435
S00000		FILE: AAA00005140	MDL: -
		MTL: -	

**BALDOR ELECTRIC Co.**

3PH, DV, 9 LEADS