

BALDOR • RELIANCE

Customer information packet

EM31104

.33HP, 1725RPM, 3PH, 60HZ, 56, 3416M, ODP, F1, N

Class - None

Division - Not Applicable

Specifications

Enclosure	ODP
Frame	56
Frame Material	Steel
Frequency	60.00 Hz
Haz Area Class and Group	None
Haz Area Division	Not Applicable
Motor Letter Type	Three Phase
Output @ Frequency	.330 HP @ 60 HZ
Phase	3
Synchronous Speed @ Frequency	1800 RPM @ 60 HZ
Voltage @ Frequency	230.0 V @ 60 HZ 460.0 V @ 60 HZ
Agency Approvals	CURUSEEV
Ambient Temperature	40 °C
Auxillary Box	No Auxillary Box
Auxillary Box Lead Termination	None
Base Indicator	Rigid
Bearing Grease Type	Polyrex EM (-20F +300F)
Blower	None
Current @ Voltage	.700 A @ 460.0 V 1.400 A @ 230.0 V 1.700 A @ 208.0 V
Design Code	B
Drip Cover	No Drip Cover
Duty Rating	CONT
Efficiency @ 100% Load	73.4 %
Electrically Isolated Bearing	Not Electrically Isolated
Feedback Device	NO FEEDBACK
Front Face Code	Standard
Front Shaft Indicator	None
Heater Indicator	No Heater
High Voltage Full Load Amps	0.7 a

Part detail

Revision	K
Type	AC
Mech. spec.	34B061
Base	
Status	PRD/A
Elec. spec.	34WGS936
Layout	34LYB061
Eff. date	10-29-2024
CD Diagram	CD0005
Poles	04
Leads	9#18
Proprietary	False
Created date	03-04-2014

Insulation Class	F
Inverter Code	Not Inverter
KVA Code	N
Lifting Lugs	No Lifting Lugs
Locked Bearing Indicator	No Locked Bearing
Motor Lead Exit	Ko Box
Motor Lead Quantity/Wire Size	9 @ 18 AWG
Motor Lead Termination	Flying Leads
Motor Standards	NEMA
Motor Type	3416M
Mounting Arrangement	F1
Number of Poles	4
Overall Length	10.25 IN
Power Factor	66
Product Family	General Purpose
Pulley End Bearing Type	Ball
Pulley Face Code	Standard
Pulley Shaft Indicator	Standard
Rodent Screen	None
RoHS Status	ROHS COMPLIANT
Service Factor	1.35
Shaft Diameter	0.625 IN
Shaft Extension Location	Pulley End
Shaft Ground Indicator	No Shaft Grounding
Shaft Rotation	Reversible
Shaft Slinger Indicator	No Slinger
Speed	1725 rpm
Speed Code	Single Speed
Starting Method	Direct on line
Thermal Device - Bearing	None
Thermal Device - Winding	None
Vibration Sensor Indicator	No Vibration Sensor
Winding Thermal 1	None
Winding Thermal 2	None

Nameplate

NP3155L									
CAT.NO.	EM31104								
SPEC.	34B061S936G1								
HP	.33								
VOLTS	230/460								
AMP	1.4/.7								
RPM	1725								
FRAME	56		HZ	60		PH	3		
SER.F.	1.35	CODE	N	DES	B	CL	F		
F.L. AVG. EFF.	73.4	PF	66						
RATING	40C AMB-CONT								
CC									
DE	6203		ODE	6203					
ENCL	ODP	SN							
	SFA 1.6/.8								

Parts list

Part number	Description	Quantity
SA277370	SA 34B061S936G1	1.000 ea
RA263921	RA 34B061S936G1	1.000 ea
NS2512A01	INSULATOR, CONDUIT BOX X	1.000 ea
34CB3002A	CB CAST W/.88 DIA HOLE	1.000 ea
51XB1016A07	10-16 X 7/16 HXWSSLD SERTYB	2.000 ea
11XW1032G06	10-32 X .38, TAPTITE II, HEX WSHR SLTD U	1.000 ea
34EP3200A01SP	FR ENDPLATE, MACH	1.000 ea
HW5100A03	WAVY WASHER (W1543-017)	1.000 ea
34EP3200A02SP	FR/PU ENDPLATE, MACH	1.000 ea
XY1032A02	10-32 HEX NUT DIRECTIONAL SERRATION	4.000 ea
34CB4517	CB LID 4 MTG HOLES .22 DIA STAMPED, FOR	1.000 ea
51XW0832A07	8-32 X .44, TAPTITE II, HEX WSHR SLTD SE	4.000 ea
HW2501D13	KEY, 3/16 SQ X 1.375	1.000 ea
HA7000A04	KEY RETAINER 0.625 DIA SHAFTS	1.000 ea
MG1050Y01	CELEROL BALDOR GOLD *** NLA IN 5 GALLON	0.014 ga
85XU0407S04	4X1/4 U DRIVE PIN STAINLESS	2.000 ea
HA3100A12	THRUBOLT 10-32 X 7.375	4.000 ea
MN416A01	TAG-INSTAL-MAINT no wire (2500bx)4/22	1.000 ea
LC0005E01	CONN.DIA./WARNING LABEL (LC0005/LB1119N)	1.000 ea
NP3155L	ALUM SUPER-E UL CC "SEMS"	1.000 ea
35PA1066	PKG GRP, PRINT PK1008A06	1.000 ea

AC Induction Motor Performance Data

Record # 44897

Typical performance - not guaranteed values

Winding: 34WGS936-R001		Type: 3416M		Enclosure: OPEN	
Nameplate Data			460 V, 60 Hz: High Voltage Connection		
Rated Output (HP)	.33	Full Load Torque	1.007 LB-FT		
Volts	230/460	Start Configuration	direct on line		
Full Load Amps	1.2/.6	Breakdown Torque	4.56 LB-FT		
R.P.M.	1725	Pull-up Torque	3.18 LB-FT		
Hz	60 Phase	3	Locked-rotor Torque	3.82 LB-FT	
NEMA Design Code	B	KVA Code	L	Starting Current	4.74 A
Service Factor (S.F.)	1.35		No-load Current	0.445 A	
NEMA Nom. Eff.	73.4	Power Factor	66	Line-line Res. @ 25°C	43.915 Ω
Rating - Duty	40C AMB-CONT		Temp. Rise @ Rated Load	18°C	
S.F. Amps	1.5/.7		Temp. Rise @ S.F. Load	24°C	
			Locked-rotor Power Factor	58	
			Rotor inertia	0.0381 LB-FT ²	

Load Characteristics 460 V, 60 Hz, 0.33 HP

% of Rated Load	25	50	75	100	125	150	S.F.
Power Factor	30	45	57	66	73	78	75
Efficiency	55.9	69.8	74.8	76.7	76.9	76.2	76.6
Speed	1785.9	1772.3	1758.5	1743.2	1726.8	1709.1	1720
Line amperes	0.458	0.497	0.55	0.617	0.696	0.787	0.732

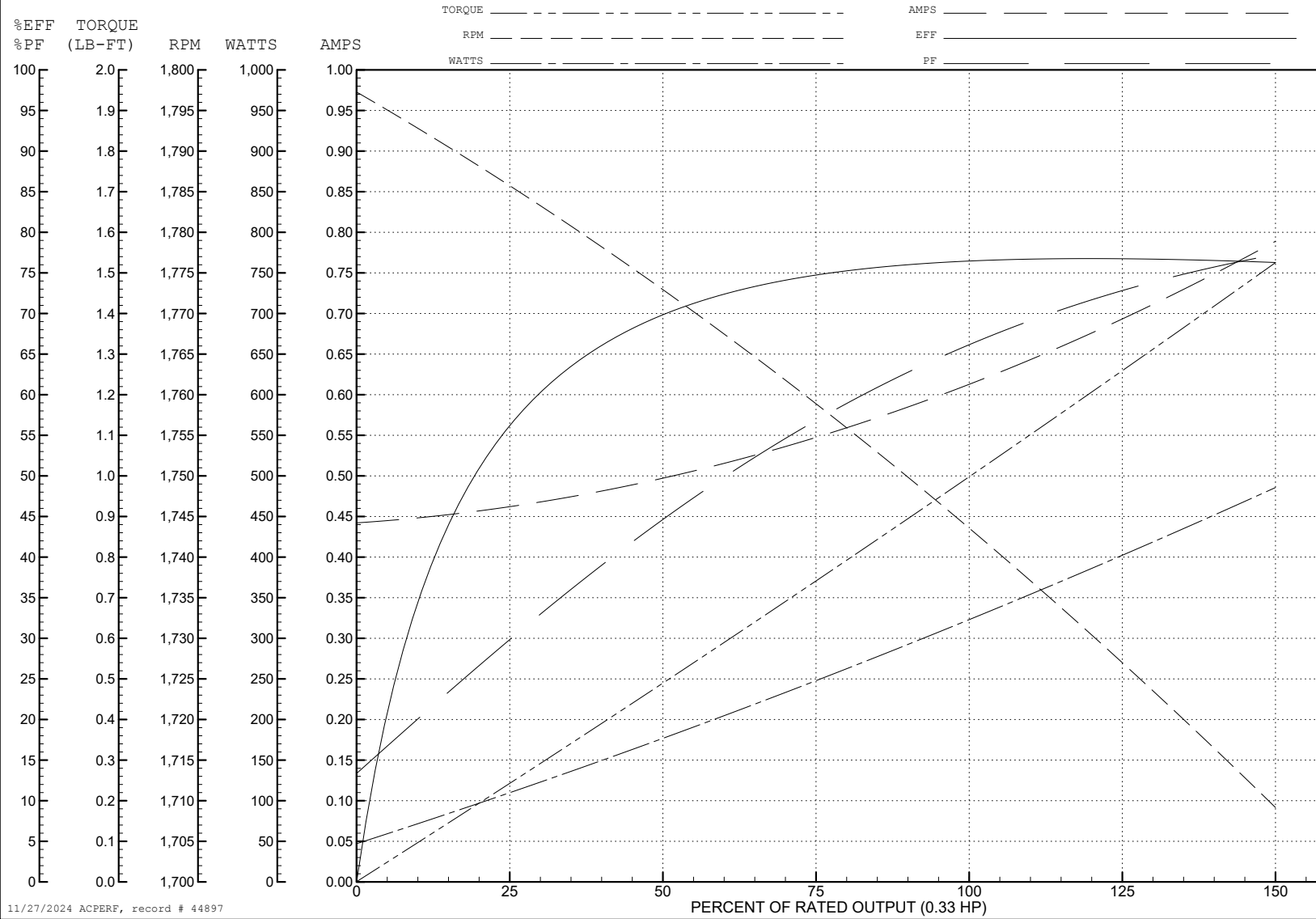
ABB Motors and Mechanical Inc.

WINDING # 34WGS936

0.33 HP 3 PH 60 HZ 1725 RPM 460 V 3416M

Typical performance - not guaranteed values.

TORQUES (LB-FT): PO=4.56 PU=3.18 LR=3.82 LRA=4.74



11/27/2024 ACPERF, record # 44897

AC Induction Motor Performance Data

Record # 49383

Typical performance - not guaranteed values

Winding: 34WGS936-R001		Type: 3416M		Enclosure: OPEN	
Nameplate Data			230 V, 60 Hz: Low Voltage Connection		
Rated Output (HP)	.33	Full Load Torque	1.007 LB-FT		
Volts	230/460	Start Configuration	direct on line		
Full Load Amps	1.2/.6	Breakdown Torque	4.56 LB-FT		
R.P.M.	1725	Pull-up Torque	3.18 LB-FT		
Hz	60 Phase	3	Locked-rotor Torque	3.82 LB-FT	
NEMA Design Code	B	KVA Code	L	Starting Current	9.48 A
Service Factor (S.F.)	1.35		No-load Current	0.89 A	
NEMA Nom. Eff.	73.4	Power Factor	66	Line-line Res. @ 25°C	10.979 Ω
Rating - Duty	40C AMB-CONT		Temp. Rise @ Rated Load	18°C	
S.F. Amps	1.5/.7		Temp. Rise @ S.F. Load	24°C	
			Locked-rotor Power Factor	58	
			Rotor inertia	0.0381 LB-FT ²	

Load Characteristics 230 V, 60 Hz, 0.33 HP

% of Rated Load	25	50	75	100	125	150	S.F.
Power Factor	30	45	57	66	73	78	75
Efficiency	55.9	69.8	74.8	76.7	76.9	76.2	76.6
Speed	1785.9	1772.3	1758.5	1743.2	1726.8	1709.1	1720
Line amperes	0.916	0.994	1.1	1.234	1.392	1.574	1.464

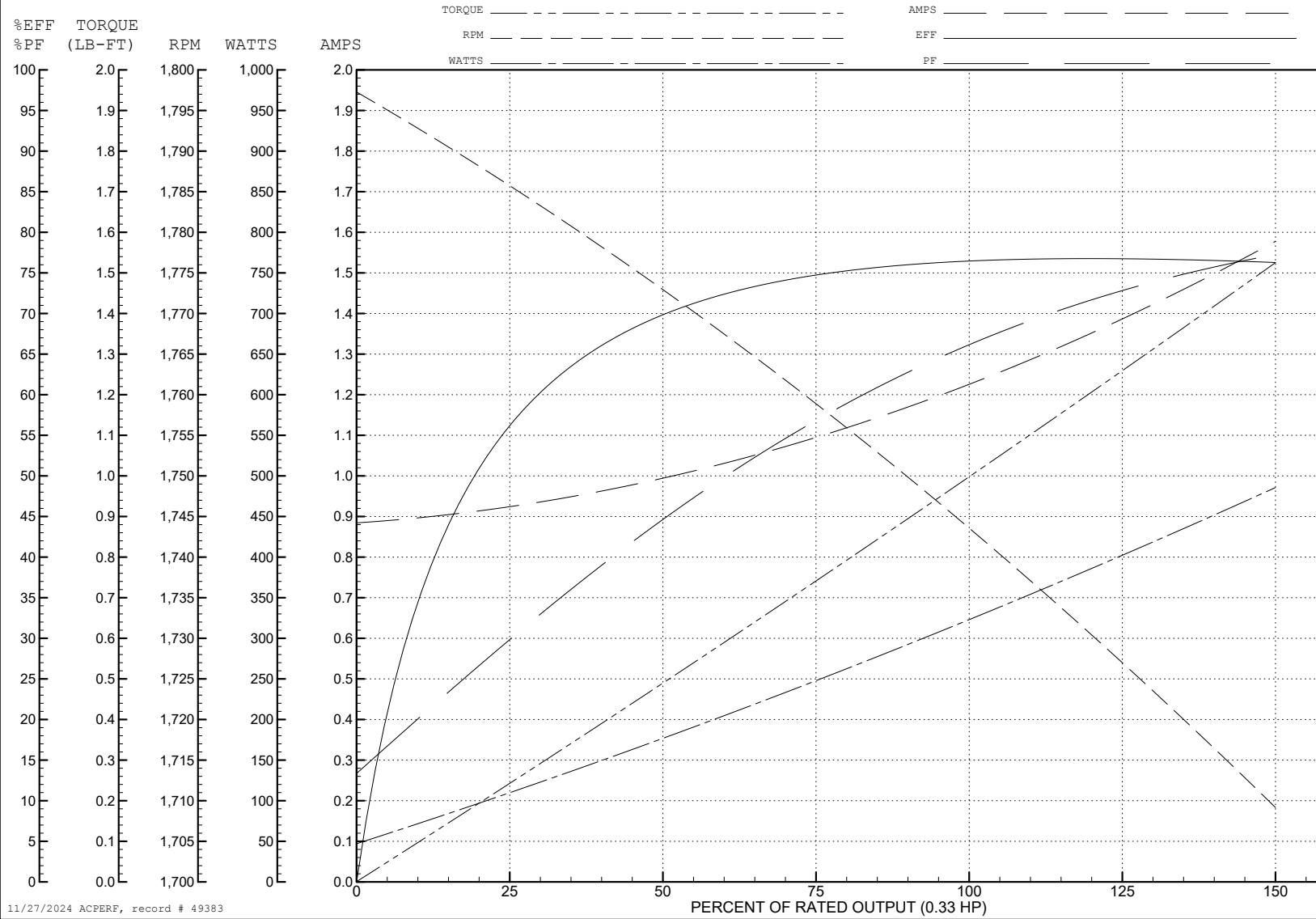
ABB Motors and Mechanical Inc.

WINDING # 34WGS936

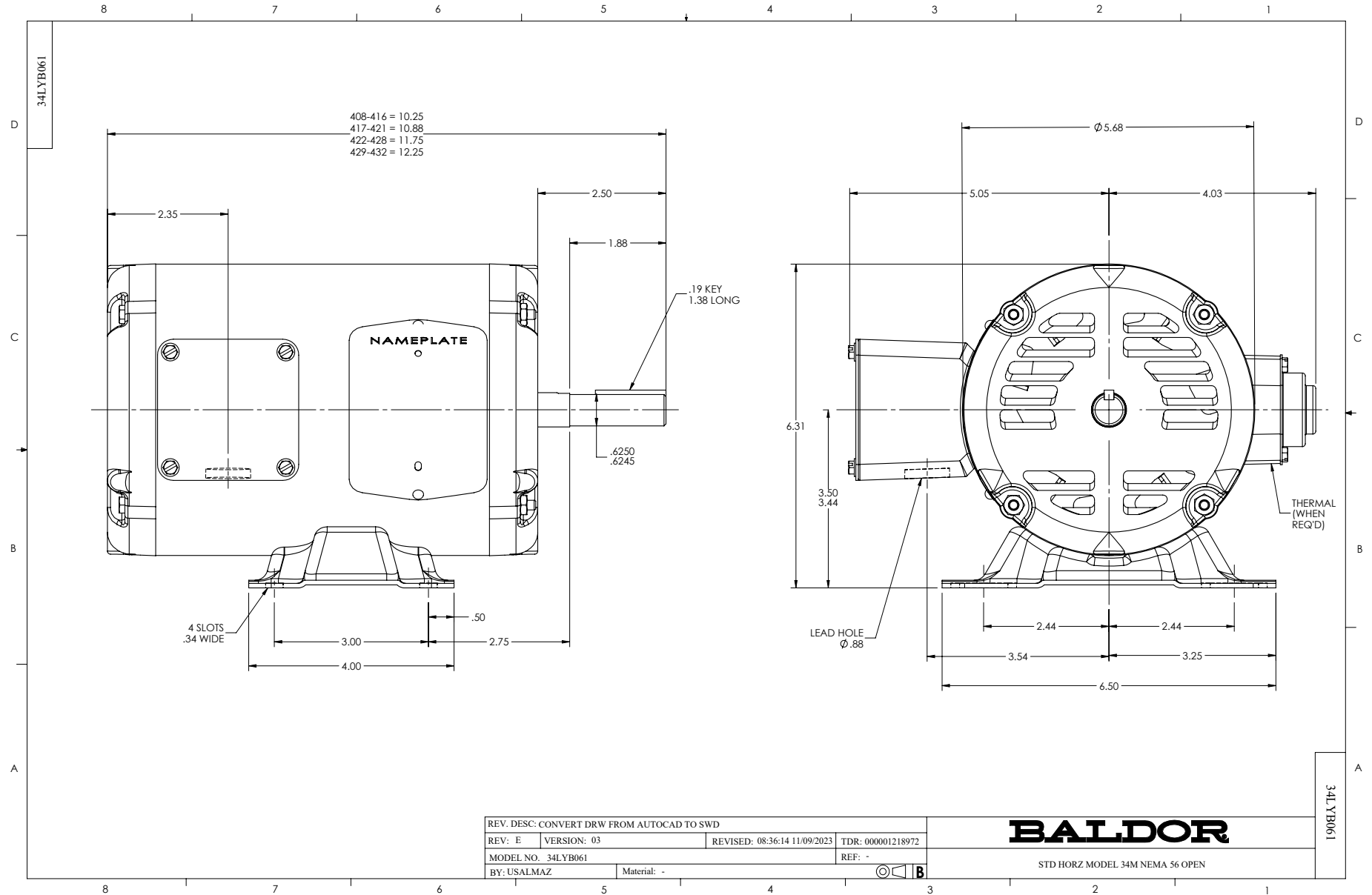
0.33 HP 3 PH 60 HZ 1725 RPM 230 V 3416M

Typical performance - not guaranteed values.

TORQUES (LB-FT): PO=4.56 PU=3.18 LR=3.82 LRA=9.48



11/27/2024 ACPERF, record # 49383



CD0005



LOW VOLTAGE
(2Y)



LINE

HIGH VOLTAGE
(1Y)



LINE

NOTES:

1. INTERCHANGE ANY TWO LINE LEADS TO REVERSE ROTATION.
2. OPTIONAL THERMOSTATS ARE PROVIDED WHEN SPECIFIED.
3. ACTUAL NUMBER OF INTERNAL PARALLEL CIRCUITS MAY BE A MULTIPLE OF THOSE SHOWN ABOVE.
4. LEAD COLORS ARE OPTIONAL. LEADS MUST ALWAYS BE NUMBERED AS SHOWN.

CD0005

REV. DESC: REVISE TO SHOW OPTIONAL COLORS			
REV. LTR: E	BY: JLP	REVISED: 01/19/99 10:15	TDR: 0171435
S00000		FILE: AAA00005140	MDL: -
		MTL: -	

BALDOR ELECTRIC Co.

3PH, DV, 9 LEADS