

BALDOR • RELIANCE

Customer information packet

EM31153

.75HP, 1180RPM, 3PH, 60HZ, 56, 3524M, ODP, F1, N

Class - None

Division - Not Applicable

Copyright © All product information within this document is subject to ABB Motors and Mechanical Inc. copyright © protection, unless otherwise noted.

11/26/2024 10:29:21 PM

Specifications

Enclosure	ODP
Frame	56
Frame Material	Steel
Frequency	60.00 Hz
Haz Area Class and Group	None
Haz Area Division	Not Applicable
Motor Letter Type	Three Phase
Output @ Frequency	.750 HP @ 60 HZ
Phase	3
Synchronous Speed @ Frequency	1200 RPM @ 60 HZ
Voltage @ Frequency	230.0 V @ 60 HZ 460.0 V @ 60 HZ
Agency Approvals	CURUSEEV
Ambient Temperature	40 °C
Auxillary Box	No Auxillary Box
Auxillary Box Lead Termination	None
Base Indicator	Rigid
Bearing Grease Type	Polyrex EM (-20F +300F)
Blower	None
Current @ Voltage	1.550 A @ 460.0 V 2.900 A @ 208.0 V 3.100 A @ 230.0 V
Design Code	B
Drip Cover	No Drip Cover
Duty Rating	CONT
Efficiency @ 100% Load	81.7 %
Electrically Isolated Bearing	Not Electrically Isolated
Feedback Device	NO FEEDBACK
Front Shaft Indicator	None
Heater Indicator	No Heater
High Voltage Full Load Amps	1.6 a
Insulation Class	F

Part detail

Revision	F
Type	AC
Mech. spec.	35B011
Base	
Status	PRD/A
Elec. spec.	35WGG031
Layout	35LYB011
Eff. date	07-01-2024
CD Diagram	CD0005
Poles	06
Leads	9#18
Proprietary	False
Created date	09-09-2022

Inverter Code	Inverter Ready
IP Rating	NONE
KVA Code	M
Lifting Lugs	No Lifting Lugs
Locked Bearing Indicator	No Locked Bearing
Motor Lead Quantity/Wire Size	9 @ 18 AWG
Motor Lead Termination	Flying Leads
Motor Standards	NEMA
Motor Type	3524M
Mounting Arrangement	F1
Number of Poles	6
Overall Length	12.07 IN
Power Factor	55
Product Family	General Purpose
Pulley End Bearing Type	Ball
Pulley Face Code	Standard
Pulley Shaft Indicator	Standard
Rodent Screen	None
Service Factor	1.15
Shaft Diameter	0.625 IN
Shaft Ground Indicator	No Shaft Grounding
Shaft Rotation	Reversible
Shaft Slinger Indicator	No Slinger
Speed	1180 rpm
Speed Code	Single Speed
Starting Method	Direct on line
Thermal Device - Bearing	None
Thermal Device - Winding	None
Vibration Sensor Indicator	No Vibration Sensor
Winding Thermal 1	None
Winding Thermal 2	None

Nameplate

NP3155L									
CAT.NO.	EM31153								
SPEC.	35B011G031G1								
HP	.75								
VOLTS	230/460								
AMP	3.1/1.55								
RPM	1180								
FRAME	56		HZ	60		PH	3		
SER.F.	1.15	CODE	M	DES	B	CL	F		
F.L. AVG. EFF.	81.7	PF	55						
RATING	40C AMB-CONT								
CC									
DE	6205		ODE	6203					
ENCL	ODP	SN							
	SFA 2.9/1.45								

Parts list

Part number	Description	Quantity
SA407312	SA 35B011G031G1	1.000 ea
RA398811	RA 35B011G031G1	1.000 ea
NS2512A01	INSULATOR, CONDUIT BOX X	1.000 ea
35CB3007	35 CB CASTING W/.88 DIA. LEAD HOLE	1.000 ea
51XB1016A06	10-16X3/8 HXWSSLD SERTYB	2.000 ea
11XW1032G06	10-32 X .38, TAPTITE II, HEX WSHR SLTD U	1.000 ea
35EP3209G00	MASTER ODE,203 BRG	1.000 ea
HW5100A03	WAVY WASHER (W1543-017)	1.000 ea
35EP3210B00	MASTER DE,205 BRG,1.000SH	1.000 ea
XY1032A02	10-32 HEX NUT DIRECTIONAL SERRATION	4.000 ea
35CB4521	35 LIPPED CB LID (GALV & PHOSPH)	1.000 ea
51XW0832A07	8-32 X .44, TAPTITE II, HEX WSHR SLTD SE	4.000 ea
HW2501D13	KEY, 3/16 SQ X 1.375	1.000 ea
HA7000A04	KEY RETAINER 0.625 DIA SHAFTS	1.000 ea
85XU0407S04	4X1/4 U DRIVE PIN STAINLESS	2.000 ea
MJ1000A02	GREASE, POLYREX EM EXXON	0.050 lb
MG1050Y01	CELEROL BALDOR GOLD *** NLA IN 5 GALLON	0.017 ga
HA3100A18	THRUBOLT 10-32 X 9.250	4.000 ea
LC0005E01	CONN.DIA./WARNING LABEL (LC0005/LB1119N)	1.000 ea
MN416A01	TAG-INSTAL-MAINT no wire (2500bx)4/22	1.000 ea
NP3155L	ALUM SUPER-E UL CC "SEMS"	1.000 ea
35PA1066	PKG GRP, PRINT PK1008A06	1.000 ea
FE-0000001	ZRTG FE ASSEMBLY	1.000 ea
PE-0000001	ZRTG PE ASSEMBLY	1.000 ea

AC Induction Motor Performance Data

Record # 77837

Typical performance - not guaranteed values

Winding: 35WGG031-R001		Type: 3524M	Enclosure: OPEN	
Nameplate Data			460 V, 60 Hz: High Voltage Connection	
Rated Output (HP)	.75	Full Load Torque	3.35 LB-FT	
Volts	230/460	Start Configuration	direct on line	
Full Load Amps	3.1/1.55	Breakdown Torque	12.9 LB-FT	
R.P.M.	1180	Pull-up Torque	7.2 LB-FT	
Hz	60 Phase	Locked-rotor Torque	7.7 LB-FT	
NEMA Design Code	B KVA Code	Starting Current	9.7 A	
Service Factor (S.F.)	1.15	No-load Current	1.22 A	
NEMA Nom. Eff.	81.7 Power Factor	Line-line Res. @ 25°C	20.1 Ω	
Rating - Duty	40C AMB-CONT	Temp. Rise @ Rated Load	34°C	
S.F. Amps	3.3/1.65	Temp. Rise @ S.F. Load	38°C	
		Locked-rotor Power Factor	50.5	
		Rotor inertia	0.174 lb-ft ²	

Load Characteristics 460 V, 60 Hz, 0.75 HP

% of Rated Load	25	50	75	100	125	150	S.F.
Power Factor	22	35	47	55	62	67	1
Efficiency	65	76	80	82	82	81	82.4
Speed	1194	1189	1184	1179	1172	1166	1170
Line amperes	1.23	1.31	1.42	1.56	1.74	1.95	1.47

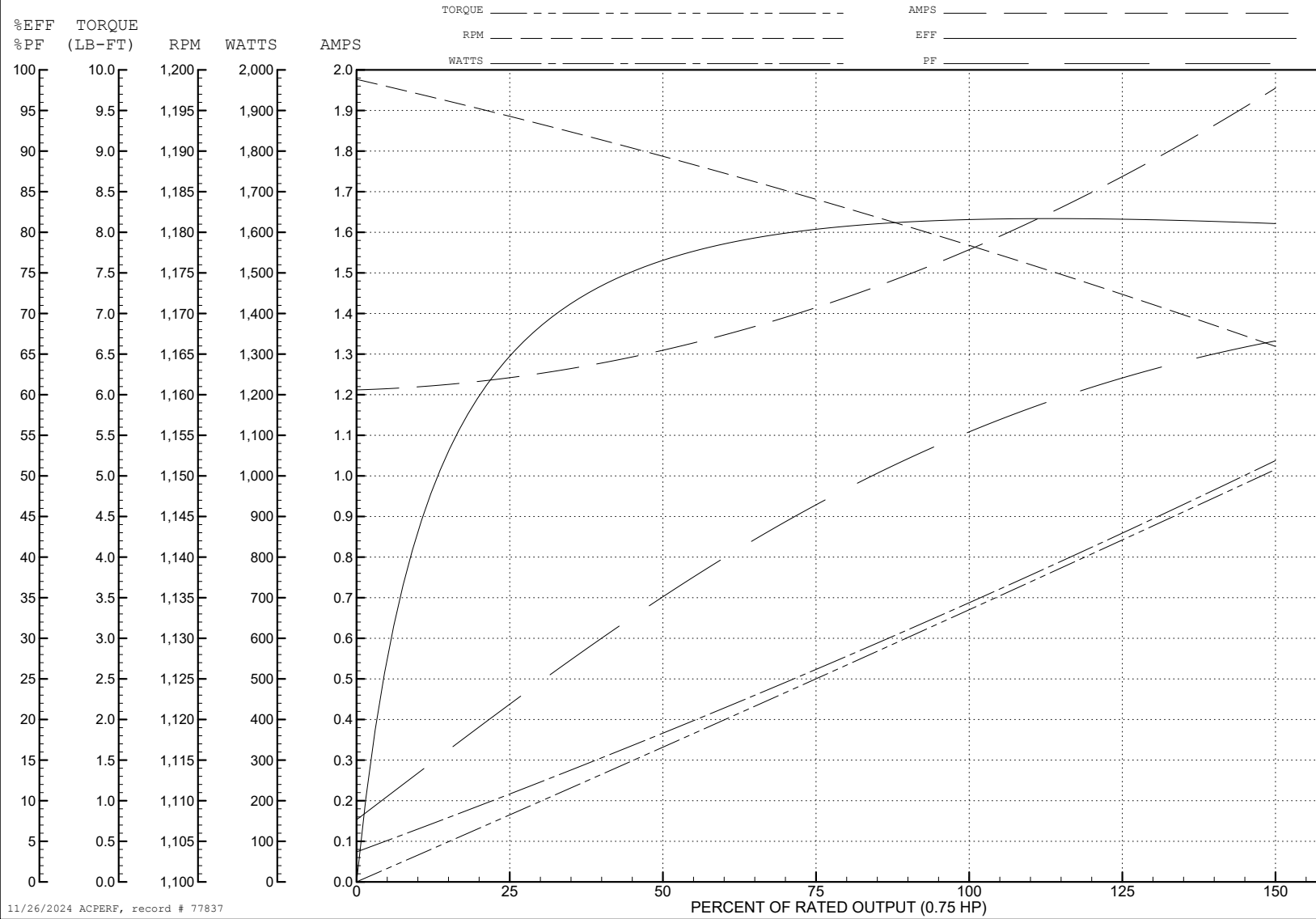
ABB Motors and Mechanical Inc.

WINDING # 35WGG031

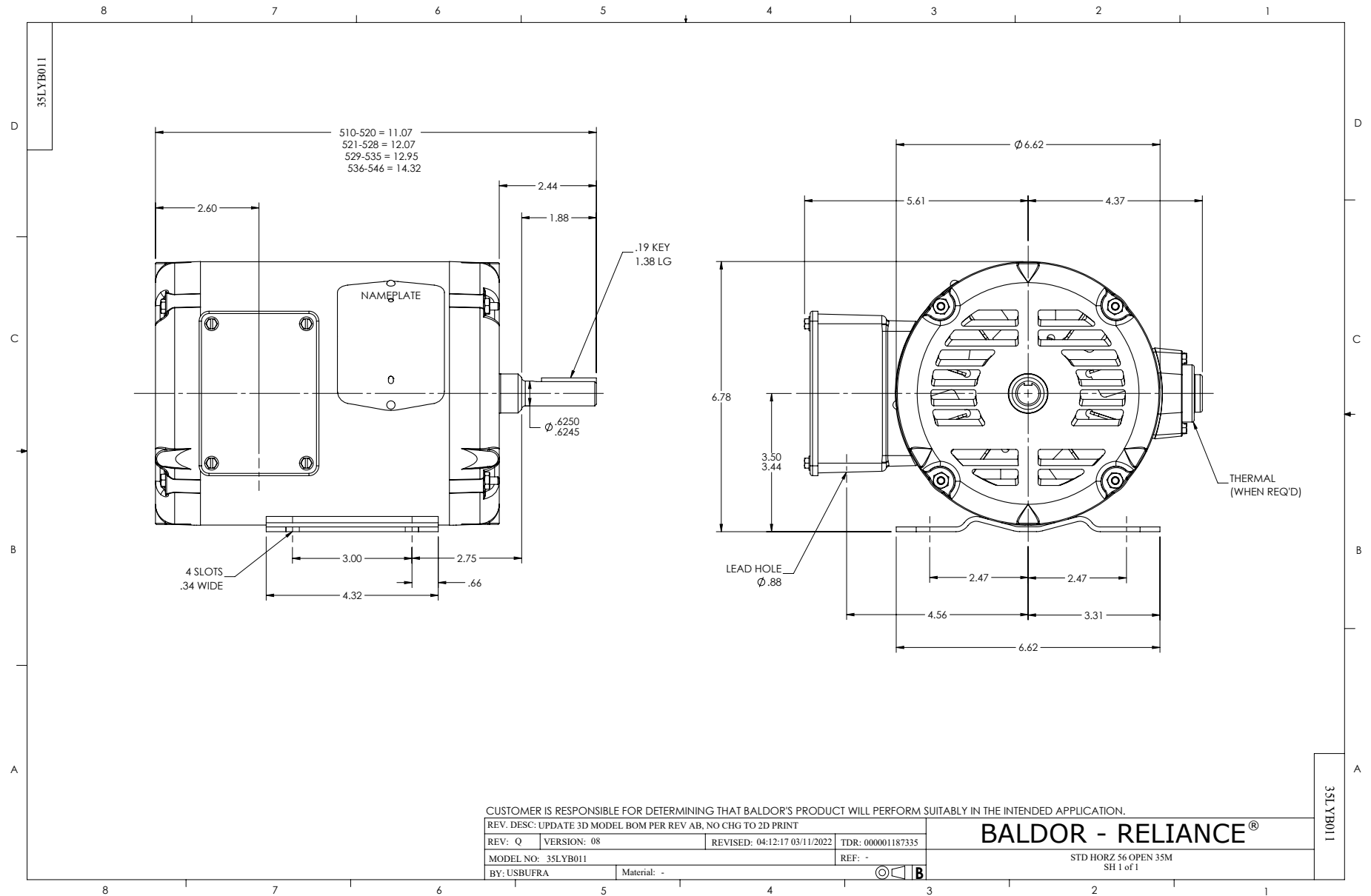
0.75 HP 3 PH 60 HZ 1180 RPM 460 V 3524M

Typical performance - not guaranteed values.

TORQUES (LB-FT): PO=12.9 PU=7.2 LR=7.7 LRA=9.7



11/26/2024 ACPERF, record # 77837



CD0005

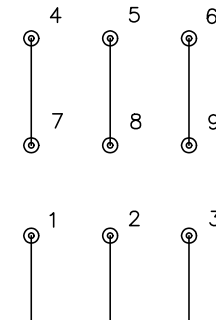


LOW VOLTAGE
(2Y)



LINE

HIGH VOLTAGE
(1Y)



LINE

NOTES:

1. INTERCHANGE ANY TWO LINE LEADS TO REVERSE ROTATION.
2. OPTIONAL THERMOSTATS ARE PROVIDED WHEN SPECIFIED.
3. ACTUAL NUMBER OF INTERNAL PARALLEL CIRCUITS MAY BE A MULTIPLE OF THOSE SHOWN ABOVE.
4. LEAD COLORS ARE OPTIONAL. LEADS MUST ALWAYS BE NUMBERED AS SHOWN.

CD0005

REV. DESC: REVISE TO SHOW OPTIONAL COLORS			
REV. LTR: E	BY: JLP	REVISED: 01/19/99 10:15	TDR: 0171435
S00000		FILE: AAA00005140	MDL: -
		MTL: -	

BALDOR ELECTRIC Co.

3PH, DV, 9 LEADS