



Customer information packet

EM31154A

1.5HP, 1750RPM, 3PH, 60HZ, 56, 3526M, OPEN, F1

Class - None

Division - Not Applicable

Specifications

Enclosure	OPEN
Frame	56
Frame Material	Steel
Frequency	60.00 Hz
Haz Area Class and Group	None
Haz Area Division	Not Applicable
Motor Letter Type	Three Phase
Output @ Frequency	1.500 HP @ 60 HZ
Phase	3
Synchronous Speed @ Frequency	1800 RPM @ 60 HZ
Voltage @ Frequency	460.0 V @ 60 HZ 230.0 V @ 60 HZ
Agency Approvals	CURUSEEV
Ambient Temperature	40 °C
Auxillary Box	No Auxillary Box
Auxillary Box Lead Termination	None
Base Indicator	Rigid
Bearing Grease Type	Polyrex EM (-20F +300F)
Blower	None
Current @ Voltage	4.600 A @ 208.0 V 4.400 A @ 230.0 V 2.200 A @ 460.0 V
Design Code	B
Drip Cover	No Drip Cover
Duty Rating	CONT
Efficiency @ 100% Load	86.5 %
Electrically Isolated Bearing	Not Electrically Isolated
Feedback Device	NO FEEDBACK
Front Face Code	Standard
Front Shaft Indicator	None
Heater Indicator	No Heater
High Voltage Full Load Amps	2.2 a

Part detail

Revision	N
Type	AC
Mech. spec.	35B011
Base	
Status	PRD/A
Elec. spec.	35WGL172
Layout	35LYB011
Eff. date	07-01-2024
CD Diagram	CD0007
Poles	04
Leads	12#18
Proprietary	False
Created date	10-10-2014

Insulation Class	F
Inverter Code	Inverter Ready
IP Rating	NONE
KVA Code	M
Lifting Lugs	No Lifting Lugs
Locked Bearing Indicator	No Locked Bearing
Motor Lead Exit	Ko Box
Motor Lead Quantity/Wire Size	12 @ 18 AWG
Motor Lead Termination	Flying Leads
Motor Standards	NEMA
Motor Type	3526M
Mounting Arrangement	F1
Number of Poles	4
Overall Length	12.07 IN
Power Factor	72
Product Family	General Purpose
Pulley End Bearing Type	Ball
Pulley Face Code	Standard
Pulley Shaft Indicator	Standard
Rodent Screen	None
Service Factor	1.15
Shaft Diameter	0.625 IN
Shaft Extension Location	Pulley End
Shaft Ground Indicator	No Shaft Grounding
Shaft Rotation	Reversible
Shaft Slinger Indicator	No Slinger
Speed	1750 rpm
Speed Code	Single Speed
Starting Method	Direct on line
Thermal Device - Bearing	None
Thermal Device - Winding	None
Vibration Sensor Indicator	No Vibration Sensor
Winding Thermal 1	Automatic Thermal Overload
Winding Thermal 1 Location	SB

Winding Thermal 2

None

Nameplate

NP3273L									
CAT.NO.	EM31154A								
SPEC.	35B011L172G1								
HP	1.5								
VOLTS	230/460								
AMP	4.4/2.2								
RPM	1750								
FRAME	56	HZ	60	PH	3				
SER.F.	1.15	CODE	M	DES	B	CL	F		
F.L. AVG. EFF.	86.5	PF	72						
RATING	40C AMB-CONT								
CC							USABLE AT 208V	N/A	
DE	6205	ODE	6203						
ENCL	OPEN	SN							

Parts list

Part number	Description	Quantity
SA288150	SA 35B011L172G1	1.000 ea
RA274348	RA 35B011L172G1	1.000 ea
NS2512A01	INSULATOR, CONDUIT BOX X	1.000 ea
35CB3007	35 CB CASTING W/.88 DIA. LEAD HOLE	1.000 ea
51XB1016A06	10-16X3/8 HXWSSLD SERTYB	2.000 ea
11XW1032G06	10-32 X .38, TAPTITE II, HEX WSHR SLTD U	1.000 ea
35EP3209G00	MASTER ODE,203 BRG	1.000 ea
HW5100A03	WAVY WASHER (W1543-017)	1.000 ea
35EP3210B00	MASTER DE,205 BRG,1.000SH	1.000 ea
XY1032A02	10-32 HEX NUT DIRECTIONAL SERRATION	4.000 ea
35CB4521	35 LIPPED CB LID (GALV & PHOSPH)	1.000 ea
51XW0832A07	8-32 X .44, TAPTITE II, HEX WSHR SLTD SE	4.000 ea
HW2501D13	KEY, 3/16 SQ X 1.375	1.000 ea
HA7000A04	KEY RETAINER 0.625 DIA SHAFTS	1.000 ea
85XU0407S04	4X1/4 U DRIVE PIN STAINLESS	2.000 ea
MJ1000A02	GREASE, POLYREX EM EXXON	0.050 lb
MG1050Y01	CELEROL BALDOR GOLD *** NLA IN 5 GALLON	0.017 ga
HA3100A18	THRUBOLT 10-32 X 9.250	4.000 ea
LB1118	LABEL,WARNING (ROLL LABEL)	1.000 ea
LC0007	CONNECTION LABEL	1.000 ea
NP3273L	ALUM SUPER-E THERMALLY PROTECTED	1.000 ea
36PA1000	PKG GRP, PRINT PK1016A06	1.000 ea
MN416A01	TAG-INSTAL-MAINT no wire (2500bx)4/22	1.000 ea
FE-0000001	ZRTG FE ASSEMBLY	1.000 ea
PE-0000001	ZRTG PE ASSEMBLY	1.000 ea

AC Induction Motor Performance Data

Record # 57234

Typical performance - not guaranteed values

Winding: 35WGL172-R003		Type: 3526M	Enclosure: OPEN	
Nameplate Data			460 V, 60 Hz: Single Voltage Motor	
Rated Output (HP)	1.5	Full Load Torque	4.46 LB-FT	
Volts	230/460	Start Configuration	direct on line	
Full Load Amps	4.4/2.2	Breakdown Torque	20.6 LB-FT	
R.P.M.	1750	Pull-up Torque	12.9 LB-FT	
Hz	60 Phase	Locked-rotor Torque	14.3 LB-FT	
NEMA Design Code	B KVA Code	Starting Current	19.6 A	
Service Factor (S.F.)	1.15	No-load Current	1.38 A	
NEMA Nom. Eff.	86.5 Power Factor	Line-line Res. @ 25°C	9.4929 Ω	
Rating - Duty	40C AMB-CONT	Temp. Rise @ Rated Load	34°C	
S.F. Amps		Temp. Rise @ S.F. Load	40°C	
		Locked-rotor Power Factor	49.6	

Load Characteristics 460 V, 60 Hz, 1.5 HP

% of Rated Load	25	50	75	100	125	150	S.F.
Power Factor	32	51	64	72	78	82	76
Efficiency	76.5	84.6	87	87.5	87.1	86.3	87.3
Speed	1790	1781.1	1771.5	1761	1749.5	1737.2	1754
Line amperes	1.45	1.63	1.88	2.2	2.58	3	2.43

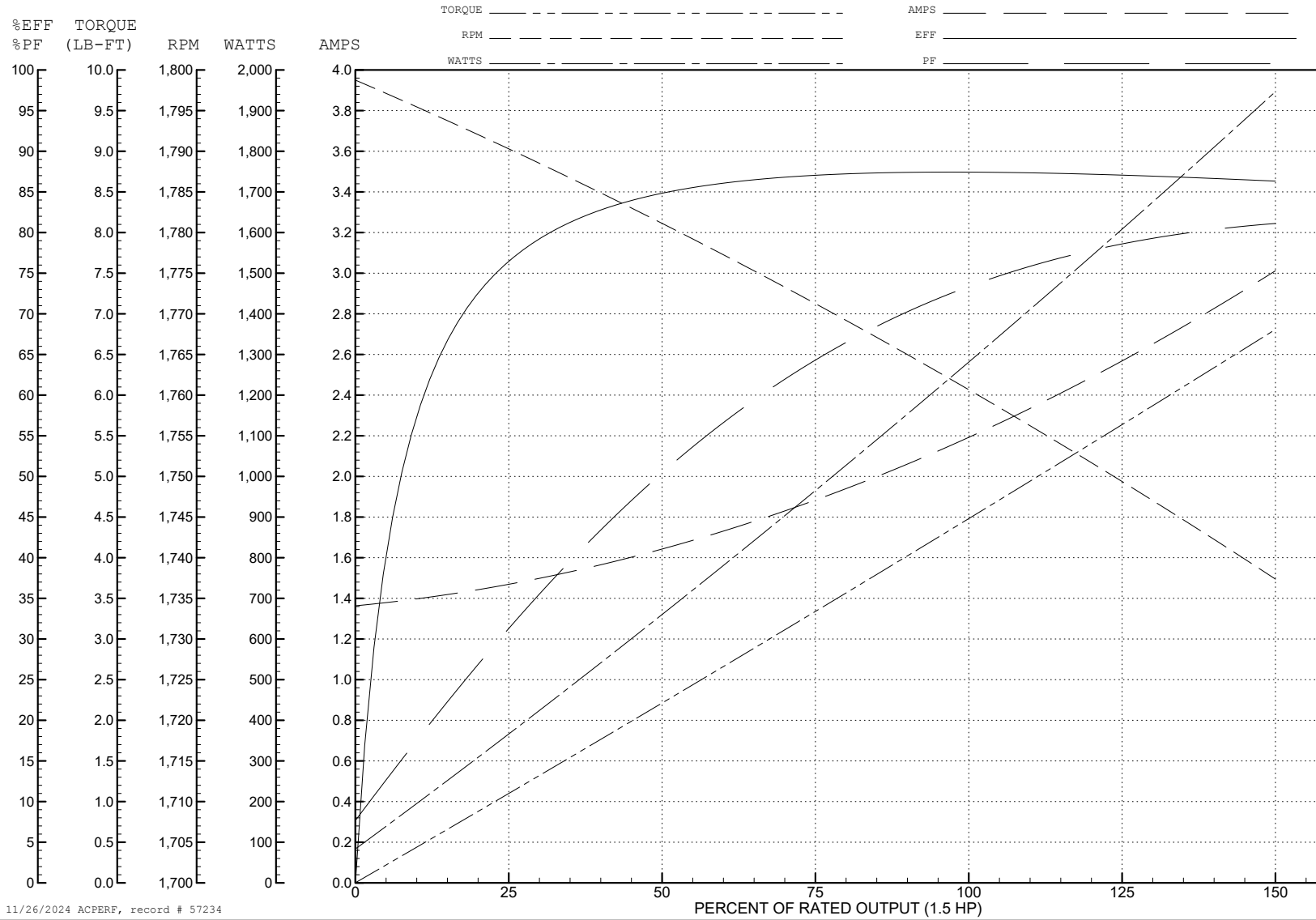
ABB Motors and Mechanical Inc.

WINDING # 35WGL172

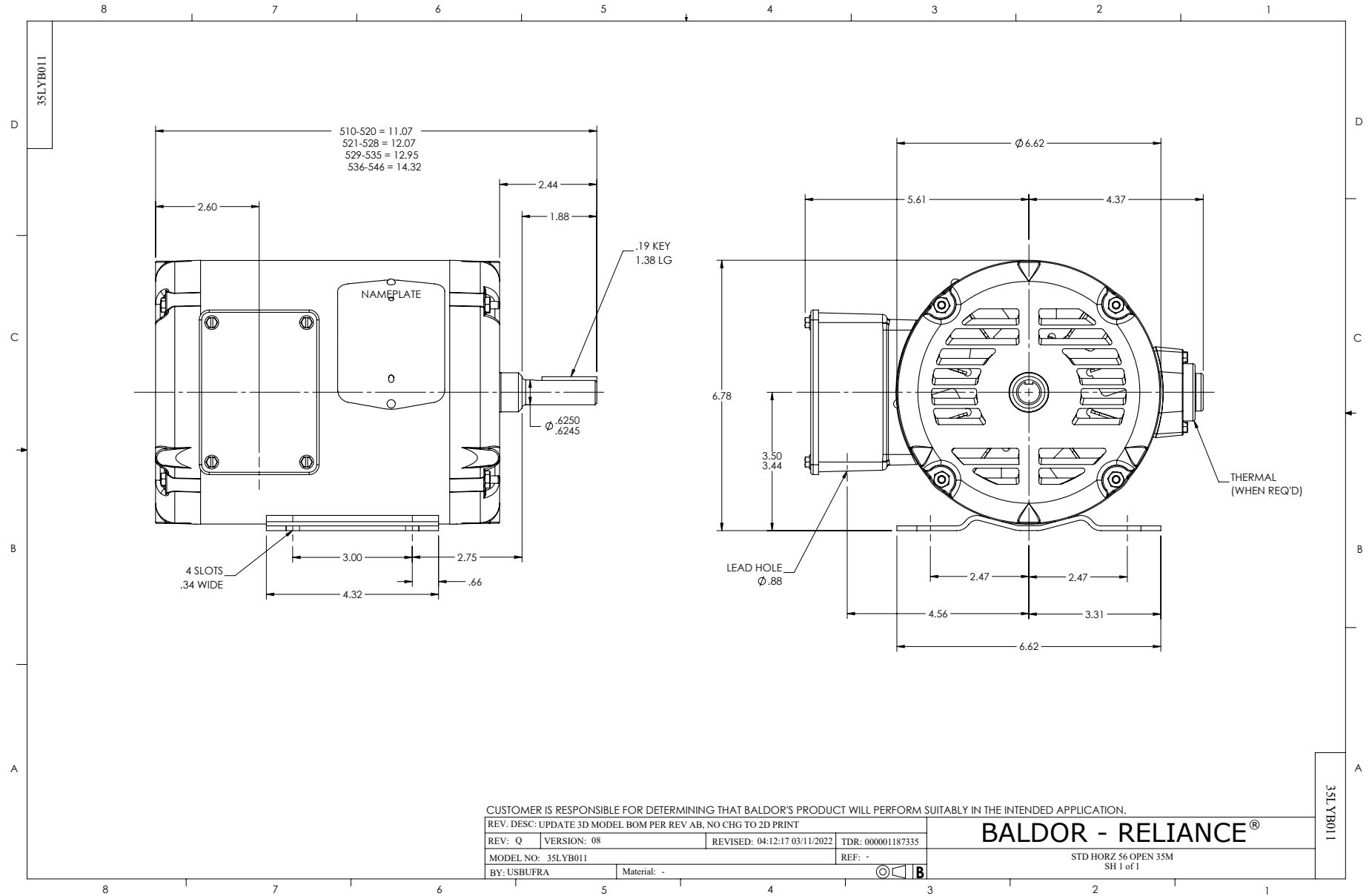
Typical performance - not guaranteed values.

1.5 HP 3 PH 60 HZ 1750 RPM 460 V 3526M

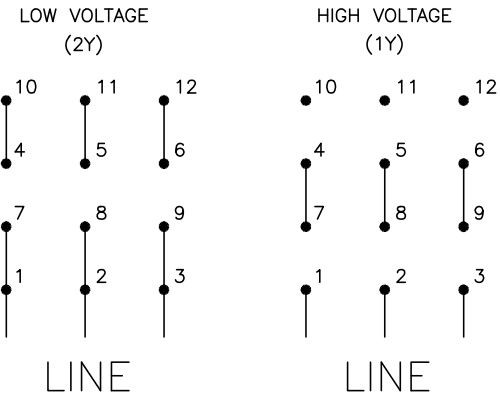
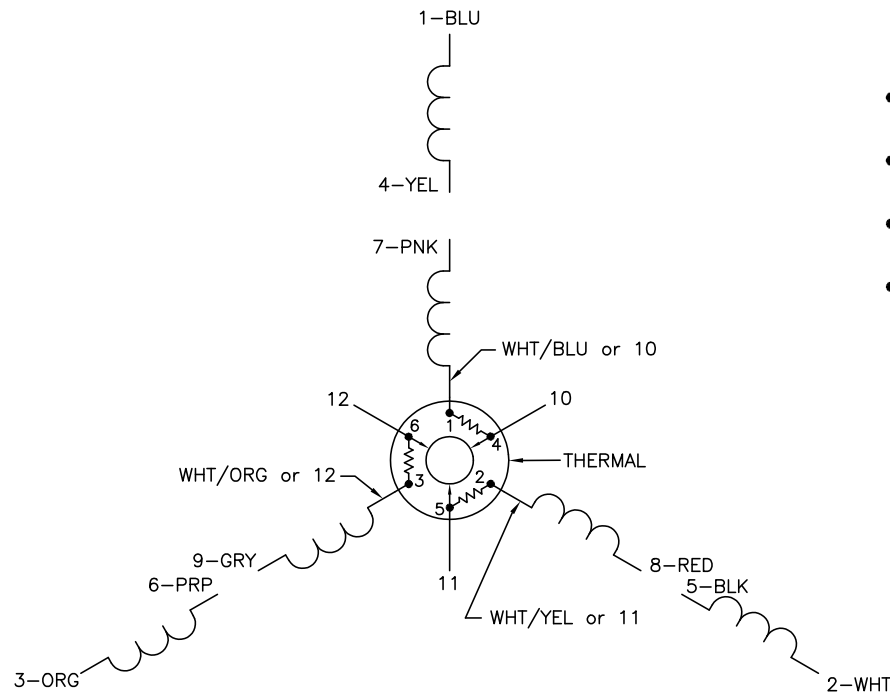
TORQUES (LB-FT): PO=20.6 PU=12.9 LR=14.3 LRA=19.6



11/26/2024 ACPERF, record # 57234



CD0007



NOTES:

1. INTERCHANGE ANY TWO LINE LEADS TO REVERSE ROTATION.
2. ACTUAL NUMBER OF INTERNAL PARALLEL CIRCUITS MAY VARY.
3. LEAD COLORS ARE OPTIONAL. LEADS MUST ALWAYS BE NUMBERED AS SHOWN.

CD0007

REV. DESC: ADDED "CK" PLANT CODE			
REV. LTR: E	BY: EAH	REVISED: 05/06/99 17:1	TDR: 0181040
L00000		FILE: AAA00008370	MDL: -
		MTL: -	

BALDOR ELECTRIC Co.

3PH, DV, THERMAL, 12 LEADS