



Customer information packet

EM3155T-G

2HP, 3450RPM, 3PH, 60HZ, 143T, 3524M, OPSB, F1

Class - None

Division - Not Applicable

Specifications

| | |
|--------------------------------|---|
| Enclosure | OPSB |
| Frame | 143T |
| Frame Material | Steel |
| Frequency | 60.00 Hz |
| Haz Area Class and Group | None |
| Haz Area Division | Not Applicable |
| Motor Letter Type | Three Phase |
| Output @ Frequency | 2.000 HP @ 60 HZ |
| Phase | 3 |
| Synchronous Speed @ Frequency | 3600 RPM @ 60 HZ |
| Voltage @ Frequency | 460.0 V @ 60 HZ 230.0 V @ 60 HZ |
| Agency Approvals | CSA CSA EEV UR |
| Ambient Temperature | 40 °C |
| Auxillary Box | No Auxillary Box |
| Auxillary Box Lead Termination | None |
| Base Indicator | Rigid |
| Bearing Grease Type | Polyrex EM (-20F +300F) |
| Blower | None |
| Current @ Voltage | 5.000 A @ 230.0 V 5.600 A @ 208.0 V 2.500 A @ 460.0 V |
| Design Code | B |
| Drip Cover | No Drip Cover |
| Duty Rating | CONT |
| Efficiency @ 100% Load | 85.5 % |
| Electrically Isolated Bearing | Not Electrically Isolated |
| Feedback Device | NO FEEDBACK |
| Front Face Code | Standard |
| Front Shaft Indicator | None |

Part detail

| | |
|--------------|------------|
| Revision | W |
| Type | AC |
| Mech. spec. | 35Z948 |
| Base | |
| Status | PRD/A |
| Elec. spec. | 35WGQ054 |
| Layout | 35LYZ948 |
| Eff. date | 09-11-2024 |
| CD Diagram | CD0005 |
| Poles | 02 |
| Leads | 9#18 |
| Proprietary | False |
| Created date | 11-17-2011 |

| | |
|-------------------------------|---------------------|
| Heater Indicator | No Heater |
| High Voltage Full Load Amps | 2.5 a |
| Insulation Class | H |
| Inverter Code | Inverter Ready |
| KVA Code | K |
| Lifting Lugs | No Lifting Lugs |
| Locked Bearing Indicator | Locked Bearing |
| Motor Lead Exit | Ko Box |
| Motor Lead Quantity/Wire Size | 9 @ 18 AWG |
| Motor Lead Termination | Flying Leads |
| Motor Standards | NEMA |
| Motor Type | 3524M |
| Mounting Arrangement | F1 |
| Number of Poles | 2 |
| Overall Length | 11.62 IN |
| Power Factor | 87 |
| Product Family | General Purpose |
| Pulley End Bearing Type | Ball |
| Pulley Face Code | Standard |
| Pulley Shaft Indicator | Standard |
| Rodent Screen | None |
| RoHS Status | ROHS COMPLIANT |
| Service Factor | 1.15 |
| Shaft Diameter | 0.875 IN |
| Shaft Extension Location | Pulley End |
| Shaft Ground Indicator | Shaft Grounding |
| Shaft Rotation | Reversible |
| Shaft Slinger Indicator | No Slinger |
| Speed | 3450 rpm |
| Speed Code | Single Speed |
| Starting Method | Direct on line |
| Thermal Device - Bearing | None |
| Thermal Device - Winding | None |
| Vibration Sensor Indicator | No Vibration Sensor |

Winding Thermal 1

None

Winding Thermal 2

None

Nameplate

NP3553LUA

| | | | | | | | |
|----------------------------------|------------------------|-------------|-----------|------------|---|--------------|-------|
| CAT.NO. | EM3155T-G | | | | | | |
| SPEC. | 35Z948Q054G1 | | | | | | |
| HP | 2 | | | | | | |
| VOLTS | 230/460 | | | | | | |
| AMPS | 5/2.5 | | | | | | |
| RPM | 3450 | | | | | | |
| FRAME | 143T | | HZ | 60 | | PH | 3 |
| SF | 1.15 | CODE | K | DES | B | CLASS | H |
| NEMA NOM. EFF | 85.5 | PF | 87 | | | | |
| RATING | 40C AMB-CONT | | | | | | |
| CC | 010A | | | | | | |
| ENCL | OPSB | SN | | | | | |
| DE | 6205 | ODE | 6203 | | | | |
| VPWM INVERTER READY | | | | | | | |
| CT30-60(2:1) VT3-60(20:1) | | | | | | | |
| USABLE AT | 50HZ 2HP 190/380V 6/3A | | | | | | SF1.0 |

Parts list

| Part number | Description | Quantity |
|-------------|--|----------|
| SA234532 | SA 35Z948Q054G1 | 1.000 ea |
| RA221504 | RA 35Z948Q054G1 | 1.000 ea |
| NS2512A01 | INSULATOR, CONDUIT BOX X | 1.000 ea |
| 35CB3009 | 35 CB W/1.09 DIA. LEAD HOLE @ 6: | 1.000 ea |
| 51XB1016A07 | 10-16 X 7/16 HXWSSLD SERTYB | 2.000 ea |
| 11XW1032G06 | 10-32 X .38, TAPTITE II, HEX WSHR SLTD U | 1.000 ea |
| 35EP3209G00 | MASTER ODE,203 BRG | 1.000 ea |
| HW5100A03 | WAVY WASHER (W1543-017) | 1.000 ea |
| 35EP3210C00 | MASTER DE,205 BRG,1.000SH,LCK BRG | 1.000 ea |
| 51XN1032A18 | 10-32 X 1 1/8 HX WS SL SR (ESKAY) | 2.000 ea |
| XY1032A02 | 10-32 HEX NUT DIRECTIONAL SERRATION | 4.000 ea |
| 35CB4521 | 35 LIPPED CB LID (GALV & PHOSPH) | 1.000 ea |
| 51XW0832A07 | 8-32 X .44, TAPTITE II, HEX WSHR SLTD SE | 4.000 ea |
| HW2501D13 | KEY, 3/16 SQ X 1.375 | 1.000 ea |
| HA7000A01 | KEY RETAINER 7/8" DIA SHAFT | 1.000 ea |
| 85XU0407S04 | 4X1/4 U DRIVE PIN STAINLESS | 2.000 ea |
| LB1459 | AEGIS SGR LABEL "AEGISLBL-100" | 1.000 ea |
| MJ1000A02 | GREASE, POLYREX EM EXXON | 0.050 lb |
| HA3100A45 | THRUBOLT 10-32 X 8.875 | 4.000 ea |
| 35AD2005A01 | BAFFLE PLATE,MOD 35-SLTD BAND MTRS TDR | 1.000 ea |
| MG1050Y01 | CELEROL BALDOR GOLD *** NLA IN 5 GALLON | 0.017 ga |
| LC0005E01 | CONN.DIA./WARNING LABEL (LC0005/LB1119N) | 1.000 ea |
| MN416A01 | TAG-INSTAL-MAINT no wire (2500bx)4/22 | 1.000 ea |
| NP3553LUA | ALUM SUPER-E VPWM INV READY UL CC NEMA P | 1.000 ea |
| 35PA1066 | PKG GRP, PRINT PK1008A06 | 1.000 ea |
| LB1350 | BAR CODE LABEL FOR YORK | 1.000 ea |
| FE-0000001 | ZRTG FE ASSEMBLY | 1.000 ea |
| PE-0000001 | ZRTG PE ASSEMBLY | 1.000 ea |

AC Induction Motor Performance Data

Record # 53133

Typical performance - not guaranteed values

| Winding: 35WGQ054-R009 | | Type: 3524M | | Enclosure: OPSB | |
|-------------------------------|-------------------|----------------------------|--|---------------------------|--|
| Nameplate Data | | | 460 V, 60 Hz: High Voltage Connection | | |
| Rated Output (HP) | 2 | Full Load Torque | 3 LB-FT | | |
| Volts | 230/460 | Start Configuration | direct on line | | |
| Full Load Amps | 5/2.5 | Breakdown Torque | 11 LB-FT | | |
| R.P.M. | 3450 | Pull-up Torque | 8 LB-FT | | |
| Hz | 60 Phase | 3 | Locked-rotor Torque | 9.6 LB-FT | |
| NEMA Design Code | B KVA Code | K | Starting Current | 21.5 A | |
| Service Factor (S.F.) | 1.15 | | No-load Current | 1 A | |
| NEMA Nom. Eff. | 85.5 | Power Factor | 87 | | |
| Rating - Duty | 40C AMB-CONT | | Temp. Rise @ Rated Load | 31°C | |
| S.F. Amps | | | Temp. Rise @ S.F. Load | 37°C | |
| | | | Locked-rotor Power Factor | 53.6 | |
| | | | Rotor inertia | 0.0657 LB-FT ² | |

Load Characteristics 460 V, 60 Hz, 2 HP

| % of Rated Load | 25 | 50 | 75 | 100 | 125 | 150 | S.F. |
|------------------------|-----------|-----------|-----------|------------|------------|------------|-------------|
| Power Factor | 51 | 70 | 81 | 86 | 87 | 88 | 87 |
| Efficiency | 78.3 | 85.2 | 86.9 | 86.5 | 85.6 | 84.2 | 86 |
| Speed | 3570 | 3541 | 3510 | 3476 | 3441 | 3403 | 3455 |
| Line amperes | 1.2 | 1.6 | 2 | 2.5 | 3.1 | 3.7 | 2.86 |

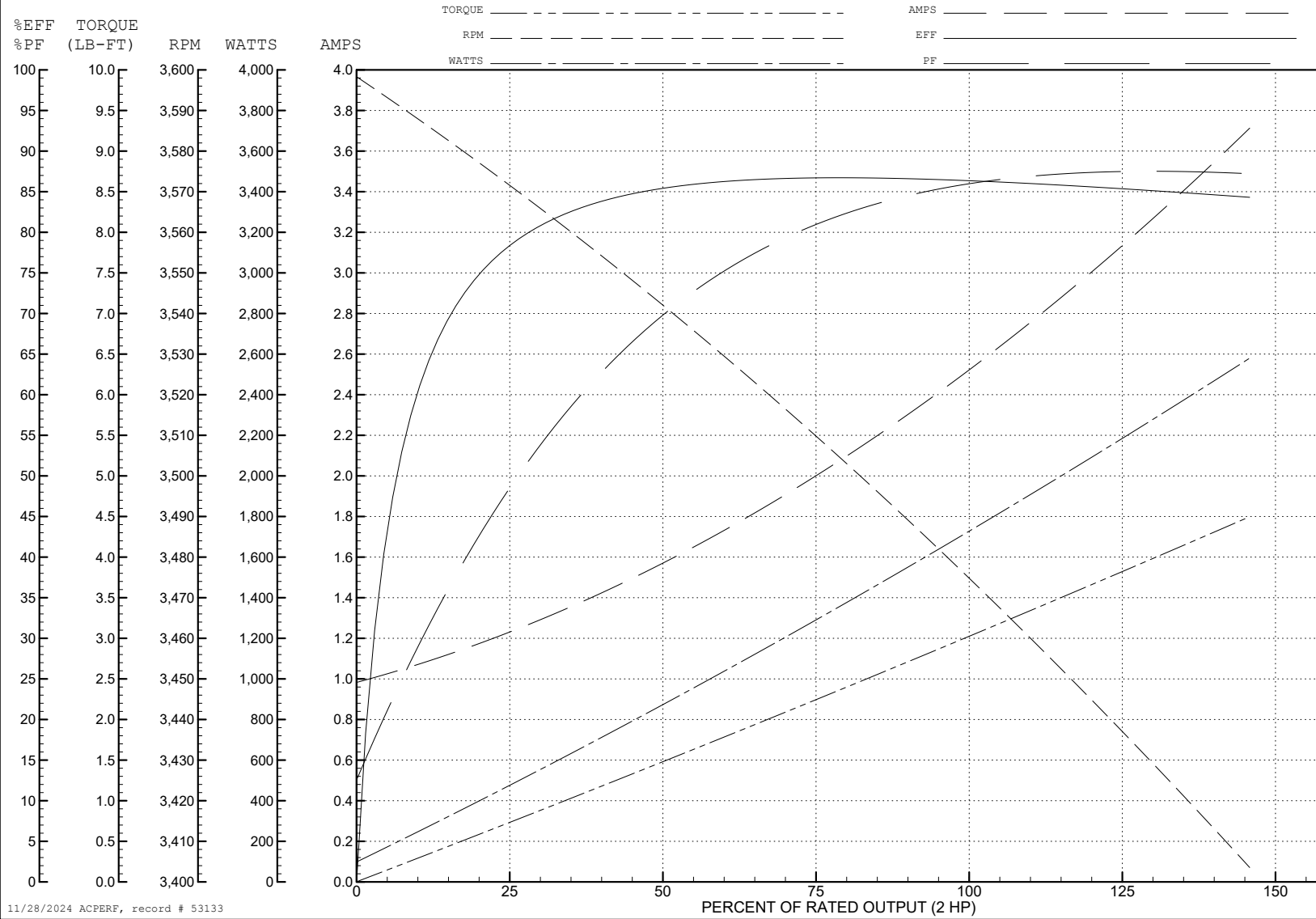
ABB Motors and Mechanical Inc.

WINDING # 35WGQ054

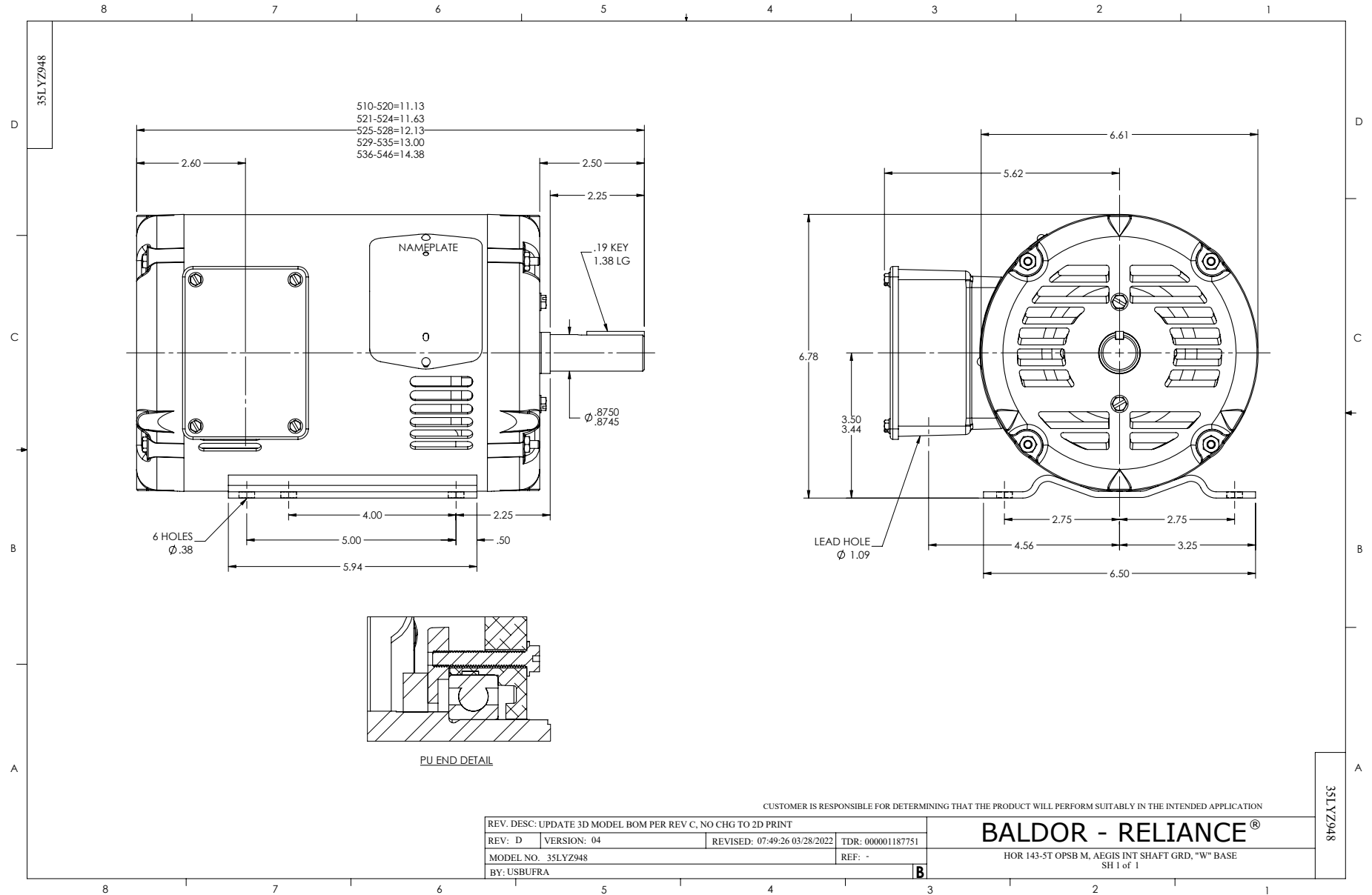
Typical performance - not guaranteed values.

2 HP 3 PH 60 HZ 3450 RPM 460 V 3524M

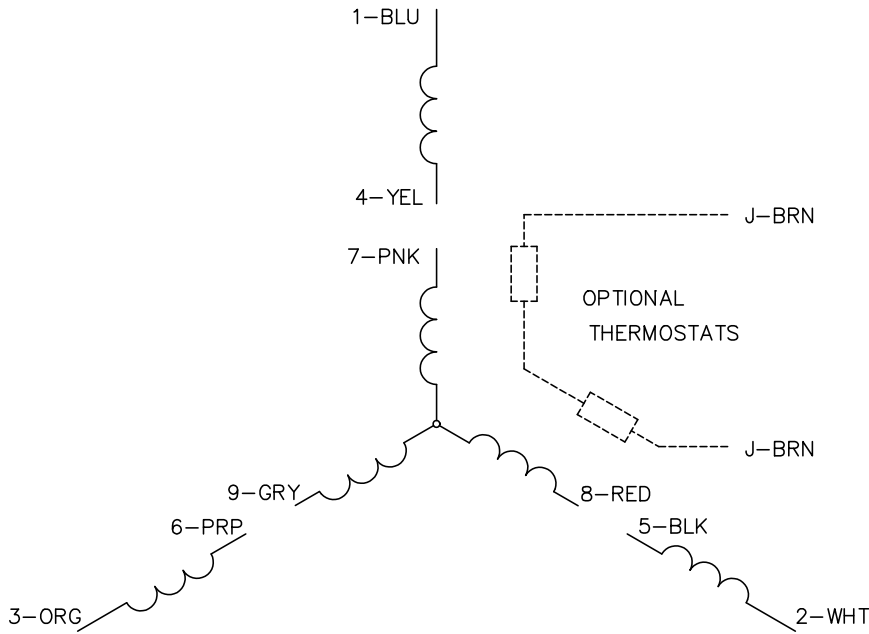
TORQUES (LB-FT): PO=11 PU=8 LR=9.6 LRA=21.5



11/28/2024 ACPERF, record # 53133



CD0005



LOW VOLTAGE
(2Y)



LINE

HIGH VOLTAGE
(1Y)



LINE

NOTES:

1. INTERCHANGE ANY TWO LINE LEADS TO REVERSE ROTATION.
2. OPTIONAL THERMOSTATS ARE PROVIDED WHEN SPECIFIED.
3. ACTUAL NUMBER OF INTERNAL PARALLEL CIRCUITS MAY BE A MULTIPLE OF THOSE SHOWN ABOVE.
4. LEAD COLORS ARE OPTIONAL. LEADS MUST ALWAYS BE NUMBERED AS SHOWN.

CD0005

REV. DESC: REVISE TO SHOW OPTIONAL COLORS

REV. LTR: E BY: JLP REVISED: 01/19/99 10:15 TDR: 0171435

500000

FILE: AAA00005140

MDL: -

MTL: -

BALDOR ELECTRIC Co.

3PH, DV, 9 LEADS