

BALDOR® • RELIANCE™

Customer information packet

EM3157T-BG

2HP, 1760RPM, 3PH, 60HZ, 145T, 3528M, OPSB, F1

Class - None

Division - Not Applicable

Copyright © All product information within this document is subject to ABB Motors and Mechanical Inc. copyright © protection, unless otherwise noted.

11/27/2024 11:54:29 PM

Specifications

Enclosure	OPSB
Frame	145T
Frame Material	Steel
Frequency	60.00 Hz
Haz Area Class and Group	None
Haz Area Division	Not Applicable
Motor Letter Type	Three Phase
Output @ Frequency	2.000 HP @ 60 HZ
Phase	3
Synchronous Speed @ Frequency	1800 RPM @ 60 HZ
Voltage @ Frequency	230.0 V @ 60 HZ 460.0 V @ 60 HZ
Agency Approvals	CSA EEV NEMA PREMIUM NEMA_PREMIUM UR
Ambient Temperature	40 °C
Auxillary Box	No Auxillary Box
Auxillary Box Lead Termination	None
Base Indicator	Rigid
Bearing Grease Type	Polyrex EM (-20F +300F)
Blower	None
Current @ Voltage	6.000 A @ 208.0 V 5.600 A @ 230.0 V 2.800 A @ 460.0 V
Design Code	B
Drip Cover	No Drip Cover
Duty Rating	CONT
Efficiency @ 100% Load	86.5 %
Electrically Isolated Bearing	Not Electrically Isolated
Feedback Device	NO FEEDBACK
Front Shaft Indicator	None

Part detail

Revision	E
Type	AC
Mech. spec.	35E2261
Base	
Status	PRD/A
Elec. spec.	35WGG073
Layout	35LYE2261
Eff. date	06-11-2024
CD Diagram	CD0005
Poles	04
Leads	9#18
Proprietary	False
Created date	01-10-2022

Heater Indicator	No Heater
High Voltage Full Load Amps	2.8 a
Insulation Class	H
Inverter Code	Inverter Ready
KVA Code	K
Lifting Lugs	No Lifting Lugs
Locked Bearing Indicator	Locked Bearing
Motor Lead Quantity/Wire Size	9 @ 18 AWG
Motor Lead Termination	Flying Leads
Motor Standards	NEMA
Motor Type	3528M
Mounting Arrangement	F1
Number of Poles	4
Overall Length	12.12 IN
Power Factor	74
Product Family	General Purpose
Pulley End Bearing Type	Ball
Pulley Face Code	Standard
Pulley Shaft Indicator	Standard
Rodent Screen	None
Service Factor	1.15
Shaft Diameter	0.875 IN
Shaft Ground Indicator	Shaft Grounding
Shaft Rotation	Reversible
Shaft Slinger Indicator	No Slinger
Speed	1760 rpm
Speed Code	Single Speed
Starting Method	Direct on line
Thermal Device - Bearing	None
Thermal Device - Winding	None
Vibration Sensor Indicator	No Vibration Sensor
Winding Thermal 1	None
Winding Thermal 2	None

Nameplate

NP3553LUA

CAT.NO.	EM3157T-BG						
SPEC.	35E2261G073G1						
HP	2						
VOLTS	230/460						
AMPS	5.6/2.8						
RPM	1760						
FRAME	145T	HZ	60	PH	3		
SF	1.15	CODE	K	DES	B	CLASS	H
NEMA NOM. EFF	86.5	PF	77				
RATING	40C AMB-CONT						
CC	010A						
ENCL	OPSB	SN					
DE	6205	ODE	6203				
VPWM INVERTER READY	SFA 6.3/3.15						
CT30-60(2:1) VT3-60(20:1)							
USABLE AT	2HP 50HZ 190/380V 6.6/3.3A						SF1.0

Parts list

Part number	Description	Quantity
SA401958	SA 35E2261G073G1	1.000 ea
RA393221	RA 35E2261G073G1	1.000 ea
34FN3002B01	EXTERNAL FAN, PLASTIC, .637/.639 HUB W/	1.000 ea
HA6362ZP	LIFTING LUG FOR 36 FRAME MOTORS.	2.000 ea
LB1624	COMBINED WARNING LABEL, ISO/ANSI PICTOGR	1.000 ea
NS2512A01	INSULATOR, CONDUIT BOX X	1.000 ea
35CB3009	35 CB W/1.09 DIA. LEAD HOLE @ 6:	1.000 ea
51XB1016A07	10-16 X 7/16 HXWSSLD SERTYB	2.000 ea
11XW1032G06	10-32 X .38, TAPTITE II, HEX WSHR SLTD U	1.000 ea
35EP3209G00	MASTER ODE,203 BRG	1.000 ea
HW5100A03	WAVY WASHER (W1543-017)	1.000 ea
35EP3210C00	MASTER DE,205 BRG,1.000SH,LCK BRG	1.000 ea
51XN1032A18	10-32 X 1 1/8 HX WS SL SR (ESKAY)	2.000 ea
XY1032A02	10-32 HEX NUT DIRECTIONAL SERRATION	4.000 ea
35CB4521	35 LIPPED CB LID (GALV & PHOSPH)	1.000 ea
51XW0832A07	8-32 X .44, TAPTITE II, HEX WSHR SLTD SE	4.000 ea
HW2501D13	KEY, 3/16 SQ X 1.375	1.000 ea
HA7000A01	KEY RETAINER 7/8" DIA SHAFT	1.000 ea
85XU0407S04	4X1/4 U DRIVE PIN STAINLESS	2.000 ea
LB1508	LABEL "SHAFT GROUNDING BRUSH" 1.50 X .81	1.000 ea
MJ1000A02	GREASE, POLYREX EM EXXON	0.050 lb
MG1050Y01	CELEROL BALDOR GOLD *** NLA IN 5 GALLON	0.017 ga
HA3100A38	THRUBOLT 10-32 X 9.375	4.000 ea
35AD2016A01	BAFFLE PLATE,MOD 35 OPSB-INT SHAFT GRD	1.000 ea
35AD2005A01	BAFFLE PLATE,MOD 35-SLTD BAND MTRS TDR	1.000 ea
LC0005	CONN.DIA.,TY M,9-LD,DUAL VOLT,REVERSING	1.000 ea
MN416A01	TAG-INSTAL-MAINT no wire (2500bx)4/22	1.000 ea
NP3553LUA	ALUM SUPER-E VPWM INV READY UL CC NEMA P	1.000 ea
35PA1066	PKG GRP, PRINT PK1008A06	1.000 ea
FE-0000001	ZRTG FE ASSEMBLY	1.000 ea
PE-0000001	ZRTG PE ASSEMBLY	1.000 ea

AC Induction Motor Performance Data

Record # 87421

Typical performance - not guaranteed values

Winding: 35WGG073-R010		Type: 3528M	Enclosure: OPEN	
Nameplate Data			460 V, 60 Hz: High Voltage Connection	
Rated Output (HP)		2	Full Load Torque	5.99 LB-FT
Volts		230/460	Start Configuration	direct on line
Full Load Amps		5.6/2.8	Breakdown Torque	20.5 LB-FT
R.P.M.		1760	Pull-up Torque	13.8 LB-FT
Hz	60 Phase	3	Locked-rotor Torque	15 LB-FT
NEMA Design Code	B KVA Code	L	Starting Current	22.5 A
Service Factor (S.F.)		1.15	No-load Current	1.62 A
NEMA Nom. Eff.	86.5 Power Factor	74	Line-line Res. @ 25°C	9.54 Ω
Rating - Duty		40C AMB-CONT	Temp. Rise @ Rated Load	64°C
S.F. Amps			Temp. Rise @ S.F. Load	77°C
			Locked-rotor Power Factor	57.9
			Rotor inertia	0.202 lb-ft ²

Load Characteristics 460 V, 60 Hz, 2 HP

% of Rated Load	25	50	75	100	125	150	S.F.
Power Factor	35	55	68	76	81	84	83
Efficiency	78.2	85.3	86.8	86.5	85.4	83.6	86.3
Speed	1791	1782	1771	1760	1748	1734	1758
Line amperes	1.71	1.97	2.34	2.82	3.36	3.97	3.02

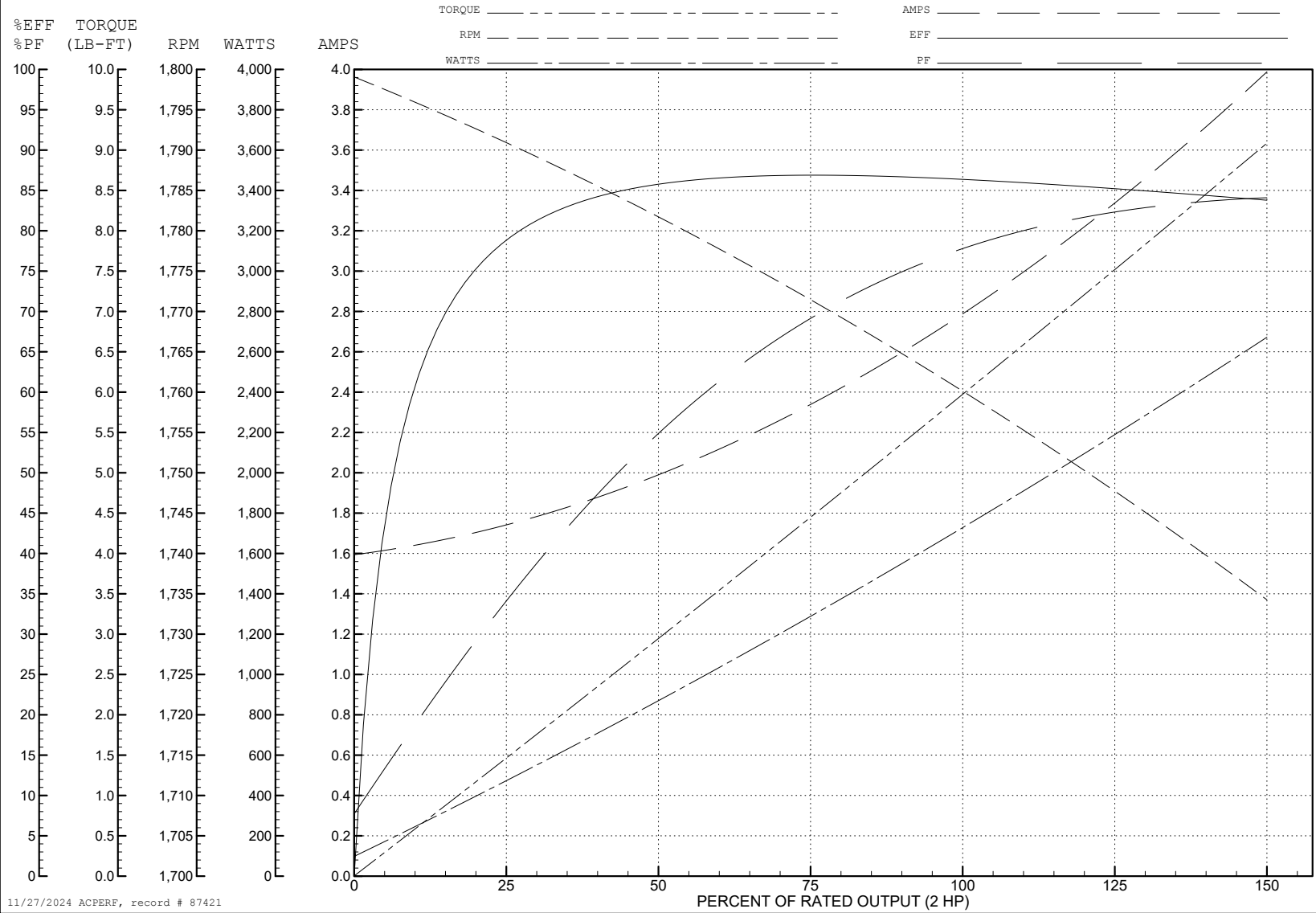
ABB Motors and Mechanical Inc.

WINDING # 35WGG073

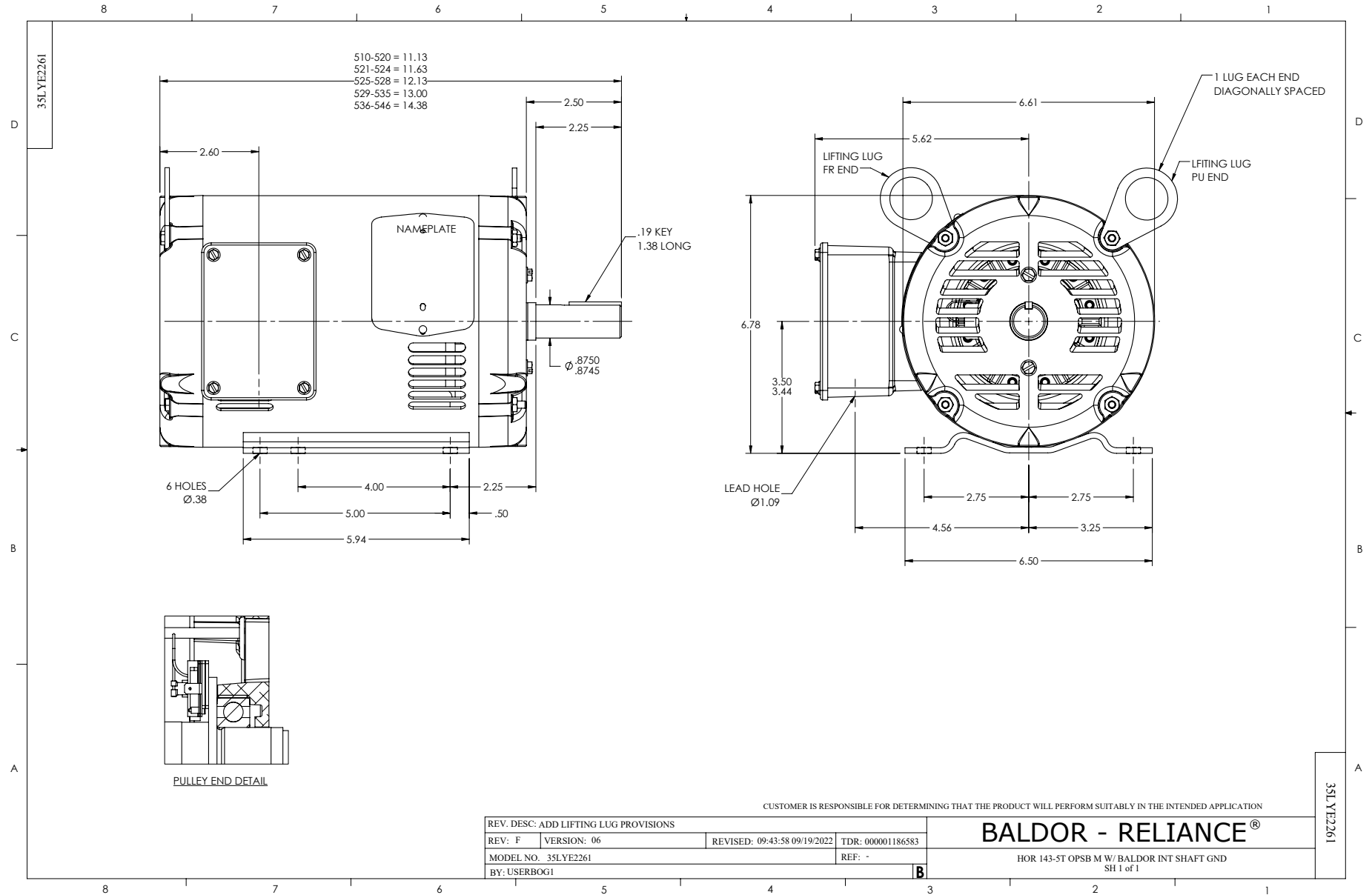
Typical performance - not guaranteed values.

2 HP 3 PH 60 HZ 1760 RPM 460 V 3528M

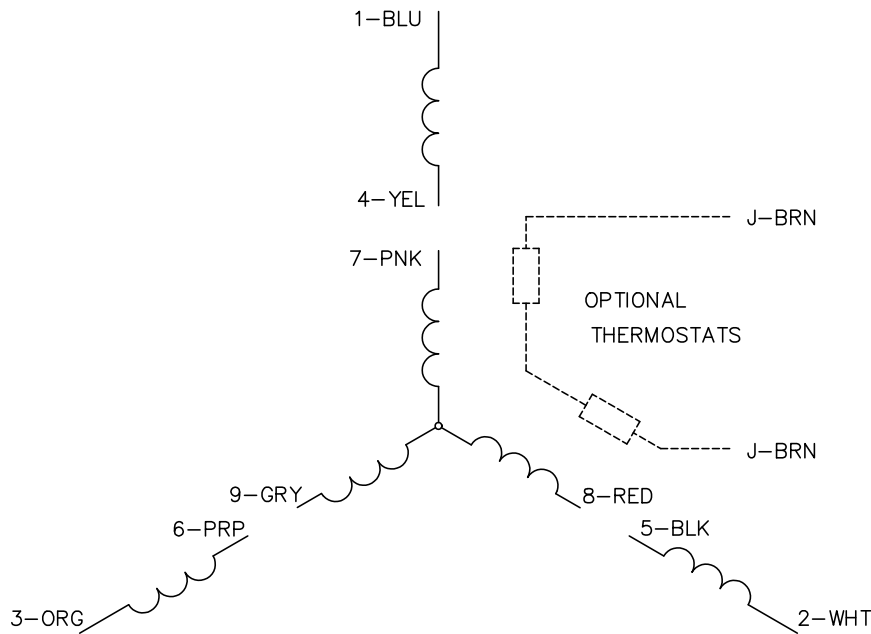
TORQUES (LB-FT): PO=20.5 PU=13.8 LR=15 LRA=22.5



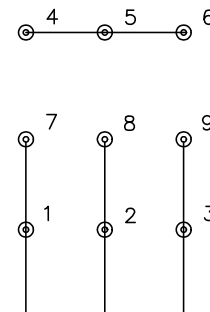
11/27/2024 ACPERF, record # 87421



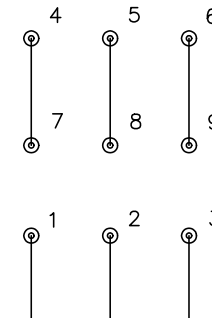
CD0005



LOW VOLTAGE
(2Y)



HIGH VOLTAGE
(1Y)



NOTES:

1. INTERCHANGE ANY TWO LINE LEADS TO REVERSE ROTATION.
2. OPTIONAL THERMOSTATS ARE PROVIDED WHEN SPECIFIED.
3. ACTUAL NUMBER OF INTERNAL PARALLEL CIRCUITS MAY BE A MULTIPLE OF THOSE SHOWN ABOVE.
4. LEAD COLORS ARE OPTIONAL. LEADS MUST ALWAYS BE NUMBERED AS SHOWN.

REV. DESC: REVISE TO SHOW OPTIONAL COLORS			
REV. LTR: E	BY: JLP	REVISED: 01/19/99 10:15	TDR: 0171435
S00000		FILE: AAA00005140	MDL: -
		MTL: -	

BALDOR ELECTRIC Co.

3PH, DV, 9 LEADS

CD0005