



Customer information packet

EM3158T-G

3HP, 3450RPM, 3PH, 60HZ, 145T, 3530M, OPSB, F1

Class - None

Division - Not Applicable

Specifications

Enclosure	OPSB
Frame	145T
Frame Material	Steel
Frequency	60.00 Hz
Haz Area Class and Group	None
Haz Area Division	Not Applicable
Motor Letter Type	Three Phase
Output @ Frequency	3.000 HP @ 60 HZ
Phase	3
Synchronous Speed @ Frequency	3600 RPM @ 60 HZ
Voltage @ Frequency	460.0 V @ 60 HZ 230.0 V @ 60 HZ
Agency Approvals	CSA CSA EEV UR
Ambient Temperature	40 °C
Auxillary Box	No Auxillary Box
Auxillary Box Lead Termination	None
Base Indicator	Rigid
Bearing Grease Type	Polyrex EM (-20F +300F)
Blower	None
Current @ Voltage	7.600 A @ 230.0 V 8.000 A @ 208.0 V 3.800 A @ 460.0 V
Design Code	B
Drip Cover	No Drip Cover
Duty Rating	CONT
Efficiency @ 100% Load	85.5 %
Electrically Isolated Bearing	Not Electrically Isolated
Feedback Device	NO FEEDBACK
Front Face Code	Standard
Front Shaft Indicator	None

Part detail

Revision	S
Type	AC
Mech. spec.	35Z948
Base	
Status	PRD/A
Elec. spec.	35WGP988
Layout	35LYZ948
Eff. date	09-11-2024
CD Diagram	CD0005
Poles	02
Leads	9#18
Proprietary	False
Created date	11-17-2011

Heater Indicator	No Heater
High Voltage Full Load Amps	3.8 a
Insulation Class	H
Inverter Code	Inverter Ready
KVA Code	K
Lifting Lugs	No Lifting Lugs
Locked Bearing Indicator	Locked Bearing
Motor Lead Exit	Ko Box
Motor Lead Quantity/Wire Size	9 @ 18 AWG
Motor Lead Termination	Flying Leads
Motor Standards	NEMA
Motor Type	3530M
Mounting Arrangement	F1
Number of Poles	2
Overall Length	13.00 IN
Power Factor	87
Product Family	General Purpose
Pulley End Bearing Type	Ball
Pulley Face Code	Standard
Pulley Shaft Indicator	Standard
Rodent Screen	None
RoHS Status	ROHS COMPLIANT
Service Factor	1.15
Shaft Diameter	0.875 IN
Shaft Extension Location	Pulley End
Shaft Ground Indicator	Shaft Grounding
Shaft Rotation	Reversible
Shaft Slinger Indicator	No Slinger
Speed	3450 rpm
Speed Code	Single Speed
Starting Method	Direct on line
Thermal Device - Bearing	None
Thermal Device - Winding	None
Vibration Sensor Indicator	No Vibration Sensor

Winding Thermal 1**None****Winding Thermal 2****None**

Nameplate

NP3553LUA							
CAT.NO.	EM3158T-G						
SPEC.	35Z948P988G1						
HP	3						
VOLTS	230/460						
AMPS	7.6/3.8						
RPM	3450						
FRAME	145T		HZ	60		PH	3
SF	1.15	CODE	K	DES	B	CLASS	H
NEMA NOM. EFF	85.5	PF	87				
RATING	40C AMB-CONT						
CC	010A						
ENCL	OPSB	SN					
DE	6205	ODE	6203				
VPWM INVERTER READY							
CT30-60(2:1) VT3-60(20:1)							
USABLE AT	50HZ 3HP 190/380V 9/4.5A						SF1.0

Parts list

Part number	Description	Quantity
SA234533	SA 35Z948P988G1	1.000 ea
RA221505	RA 35Z948P988G1	1.000 ea
NS2512A01	INSULATOR, CONDUIT BOX X	1.000 ea
35CB3009	35 CB W/1.09 DIA. LEAD HOLE @ 6:	1.000 ea
51XB1016A07	10-16 X 7/16 HXWSSLD SERTYB	2.000 ea
11XW1032G06	10-32 X .38, TAPTITE II, HEX WSHR SLTD U	1.000 ea
35EP3209G00	MASTER ODE,203 BRG	1.000 ea
HW5100A03	WAVY WASHER (W1543-017)	1.000 ea
35EP3210C00	MASTER DE,205 BRG,1.000SH,LCK BRG	1.000 ea
51XN1032A18	10-32 X 1 1/8 HX WS SL SR (ESKAY)	2.000 ea
XY1032A02	10-32 HEX NUT DIRECTIONAL SERRATION	4.000 ea
35CB4521	35 LIPPED CB LID (GALV & PHOSPH)	1.000 ea
51XW0832A07	8-32 X .44, TAPTITE II, HEX WSHR SLTD SE	4.000 ea
HW2501D13	KEY, 3/16 SQ X 1.375	1.000 ea
HA7000A01	KEY RETAINER 7/8" DIA SHAFT	1.000 ea
85XU0407S04	4X1/4 U DRIVE PIN STAINLESS	2.000 ea
LB1459	AEGIS SGR LABEL "AEGISLBL-100"	1.000 ea
MJ1000A02	GREASE, POLYREX EM EXXON	0.050 lb
HA3100A23	THRUBOLT 10-32 X 10.375	4.000 ea
35AD2005A01	BAFFLE PLATE,MOD 35-SLTD BAND MTRS TDR	1.000 ea
MG1050Y01	CELEROL BALDOR GOLD *** NLA IN 5 GALLON	0.017 ga
LC0005E01	CONN.DIA./WARNING LABEL (LC0005/LB1119N)	1.000 ea
MN416A01	TAG-INSTAL-MAINT no wire (2500bx)4/22	1.000 ea
NP3553LUA	ALUM SUPER-E VPWM INV READY UL CC NEMA P	1.000 ea
36PA1000	PKG GRP, PRINT PK1016A06	1.000 ea
LB1350	BAR CODE LABEL FOR YORK	1.000 ea
FE-0000001	ZRTG FE ASSEMBLY	1.000 ea
PE-0000001	ZRTG PE ASSEMBLY	1.000 ea

AC Induction Motor Performance Data

Record # 36078

Typical performance - not guaranteed values

Winding: 35WGP988-R005		Type: 3530M	Enclosure: OPSB	
Nameplate Data			460 V, 60 Hz: High Voltage Connection	
Rated Output (HP)	3	Full Load Torque	4.515 LB-FT	
Volts	230/460	Start Configuration	direct on line	
Full Load Amps	7.6/3.8	Breakdown Torque	18.1 LB-FT	
R.P.M.	3450	Pull-up Torque	11.3 LB-FT	
Hz	60 Phase	Locked-rotor Torque	15.1 LB-FT	
NEMA Design Code	B KVA Code	Starting Current	32.5 A	
Service Factor (S.F.)	1.15	No-load Current	1.55 A	
NEMA Nom. Eff.	85.5 Power Factor	Line-line Res. @ 25°C	5.8893 Ω	
Rating - Duty	40C AMB-CONT	Temp. Rise @ Rated Load	33°C	
S.F. Amps		Temp. Rise @ S.F. Load	40°C	
		Locked-rotor Power Factor	58	
		Rotor inertia	0.0822 LB-FT ²	

Load Characteristics 460 V, 60 Hz, 3 HP

% of Rated Load	25	50	75	100	125	150	S.F.
Power Factor	50	72	82	87	90	91	89
Efficiency	76.1	84.3	86	85.8	84.7	83	85.1
Speed	3569.1	3541.6	3510.6	3478.3	3442.7	3400.2	3457
Line amperes	1.77	2.29	2.97	3.73	4.58	5.53	4.24

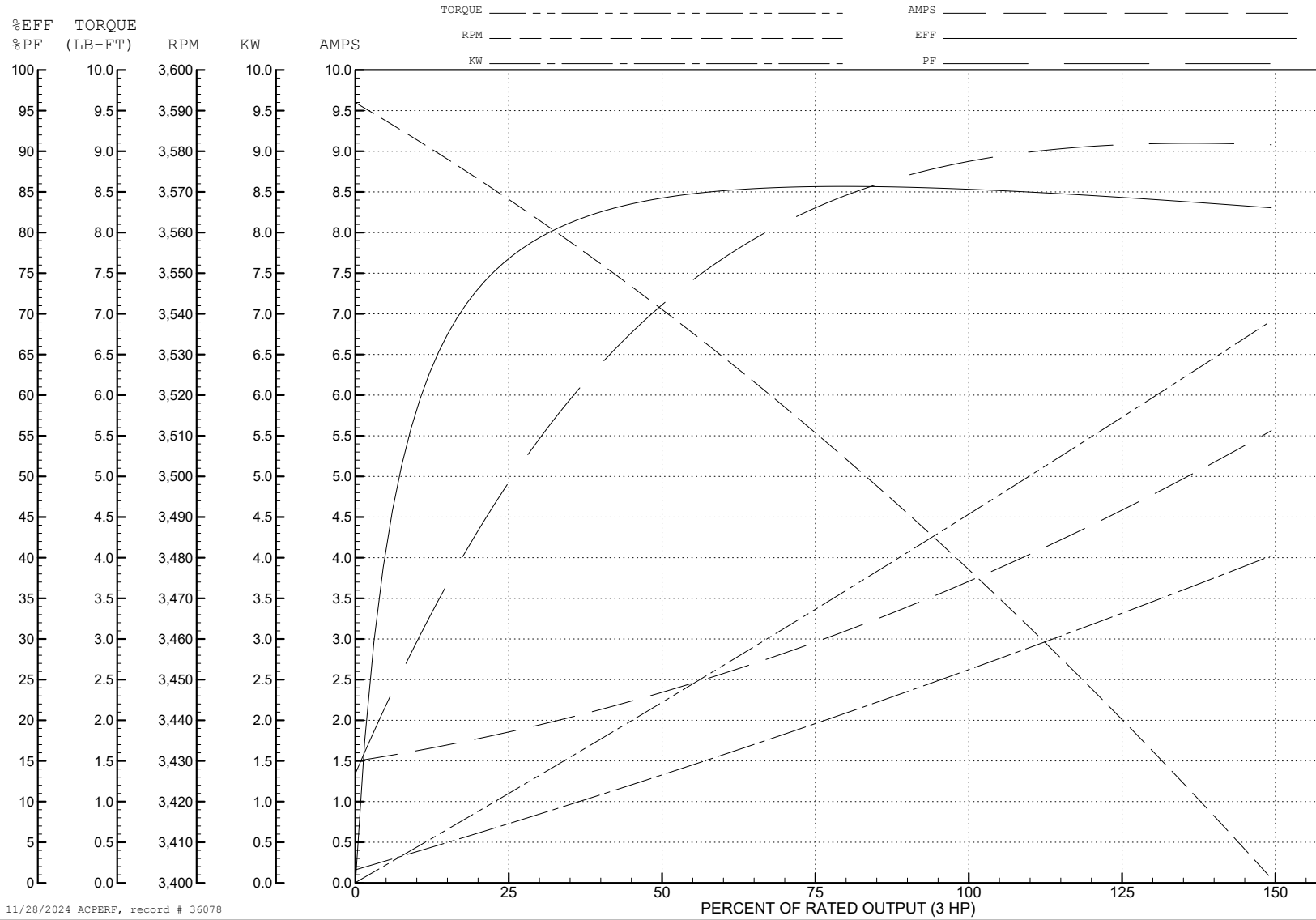
ABB Motors and Mechanical Inc.

WINDING # 35WGP988

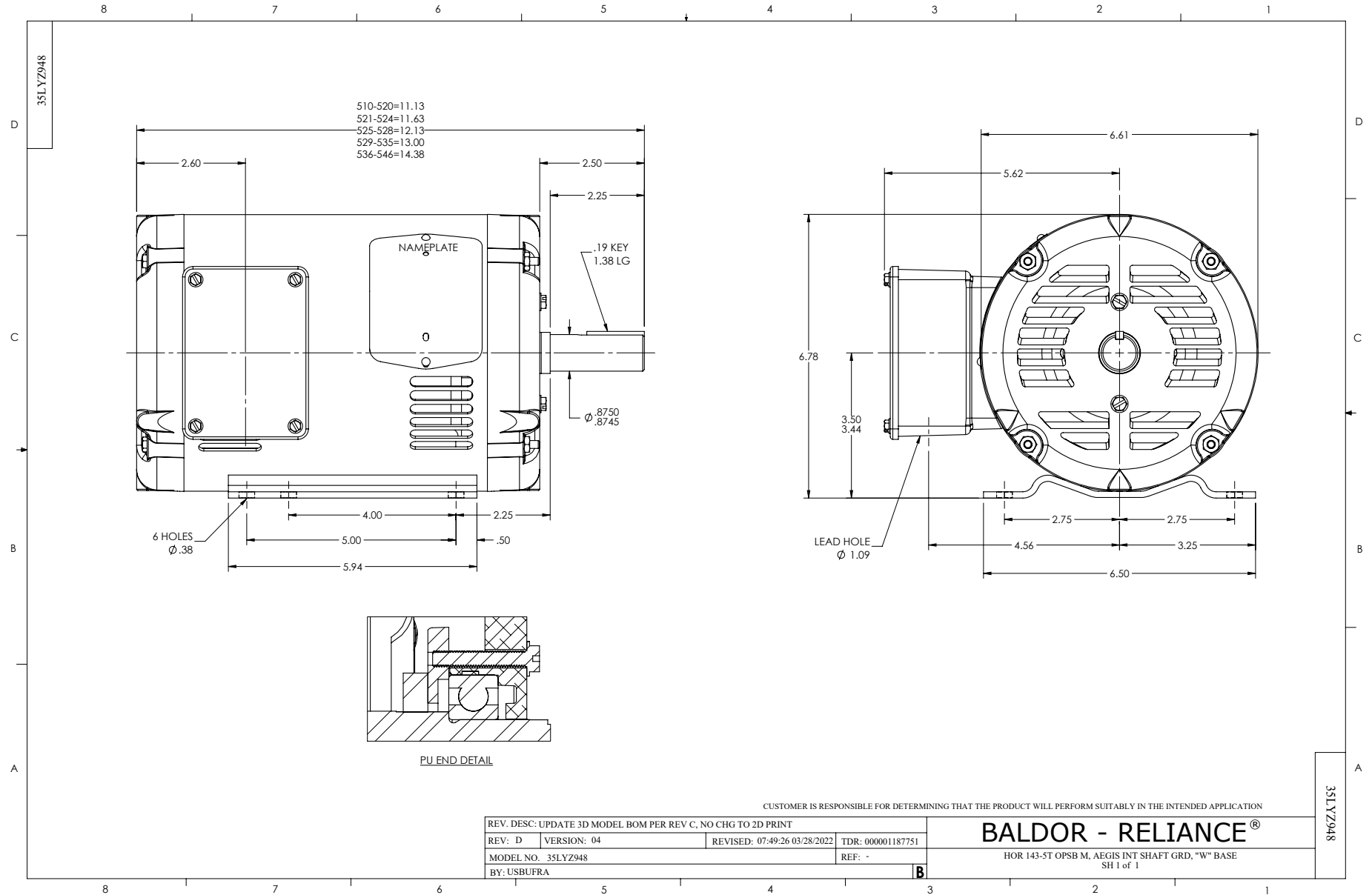
3 HP 3 PH 60 HZ 3450 RPM 460 V 3530M

Typical performance - not guaranteed values.

TORQUES (LB-FT): PO=18.1 PU=11.3 LR=15.1 LRA=32.5



11/28/2024 ACPERF, record # 36078



CD0005

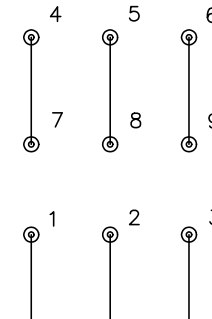


LOW VOLTAGE (2Y)



LINE

HIGH VOLTAGE (1Y)



LINE

NOTES:

1. INTERCHANGE ANY TWO LINE LEADS TO REVERSE ROTATION.
2. OPTIONAL THERMOSTATS ARE PROVIDED WHEN SPECIFIED.
3. ACTUAL NUMBER OF INTERNAL PARALLEL CIRCUITS MAY BE A MULTIPLE OF THOSE SHOWN ABOVE.
4. LEAD COLORS ARE OPTIONAL. LEADS MUST ALWAYS BE NUMBERED AS SHOWN.

CD0005

REV. DESC: REVISE TO SHOW OPTIONAL COLORS			
REV. LTR: E	BY: JLP	REVISED: 01/19/99 10:15	TDR: 0171435
S00000		FILE: AAA00005140	MDL: -
		MTL: -	

BALDOR ELECTRIC Co.

3PH, DV, 9 LEADS