



Customer information packet

EM3218T-BG

5HP, 1750RPM, 3PH, 60HZ, 184T, 3640M, OPSB, F1

Class - None

Division - Not Applicable

Specifications

| | |
|--------------------------------|---|
| Enclosure | OPSB |
| Frame | 184T |
| Frame Material | Steel |
| Frequency | 60.00 Hz |
| Haz Area Class and Group | None |
| Haz Area Division | Not Applicable |
| Motor Letter Type | Three Phase |
| Output @ Frequency | 5.000 HP @ 60 HZ |
| Phase | 3 |
| Synchronous Speed @ Frequency | 1800 RPM @ 60 HZ |
| Voltage @ Frequency | 460.0 V @ 60 HZ 230.0 V @ 60 HZ |
| Agency Approvals | CSA CSA EEV UR |
| Ambient Temperature | 40 °C |
| Auxillary Box | No Auxillary Box |
| Auxillary Box Lead Termination | None |
| Base Indicator | Rigid |
| Bearing Grease Type | Polyrex EM (-20F +300F) |
| Blower | None |
| Current @ Voltage | 14.000 A @ 208.0 V 6.600 A @ 460.0 V 13.200 A @ 230.0 V |
| Design Code | B |
| Drip Cover | No Drip Cover |
| Duty Rating | CONT |
| Efficiency @ 100% Load | 89.5 % |
| Electrically Isolated Bearing | Not Electrically Isolated |
| Feedback Device | NO FEEDBACK |
| Front Face Code | Standard |
| Front Shaft Indicator | None |

Part detail

| | |
|--------------|------------|
| Revision | T |
| Type | AC |
| Mech. spec. | 36Q133 |
| Base | |
| Status | PRD/A |
| Elec. spec. | 36WGS270 |
| Layout | 36LYQ133 |
| Eff. date | 06-11-2024 |
| CD Diagram | CD0005 |
| Poles | 04 |
| Leads | 9#16 |
| Proprietary | False |
| Created date | 10-27-2013 |

| | |
|-------------------------------|---------------------|
| Heater Indicator | No Heater |
| High Voltage Full Load Amps | 6.6 a |
| Insulation Class | H |
| Inverter Code | Inverter Ready |
| KVA Code | J |
| Lifting Lugs | No Lifting Lugs |
| Locked Bearing Indicator | Locked Bearing |
| Motor Lead Exit | Ko Box |
| Motor Lead Quantity/Wire Size | 9 @ 16 AWG |
| Motor Lead Termination | Flying Leads |
| Motor Standards | NEMA |
| Motor Type | 3640M |
| Mounting Arrangement | F1 |
| Number of Poles | 4 |
| Overall Length | 16.50 IN |
| Power Factor | 80 |
| Product Family | General Purpose |
| Pulley End Bearing Type | Ball |
| Pulley Face Code | Standard |
| Pulley Shaft Indicator | Standard |
| Rodent Screen | None |
| Service Factor | 1.15 |
| Shaft Diameter | 1.125 IN |
| Shaft Extension Location | Pulley End |
| Shaft Ground Indicator | Shaft Grounding |
| Shaft Rotation | Reversible |
| Shaft Slinger Indicator | No Slinger |
| Speed | 1750 rpm |
| Speed Code | Single Speed |
| Starting Method | Direct on line |
| Thermal Device - Bearing | None |
| Thermal Device - Winding | None |
| Vibration Sensor Indicator | No Vibration Sensor |
| Winding Thermal 1 | None |

Winding Thermal 2

None

Nameplate

| NP3553L | | | | | | | | | |
|----------------------------------|--------------|-------------|-----------|------------|---|--------------|---|--|--|
| CAT.NO. | EM3218T-BG | | | | | | | | |
| SPEC | 36Q133S270G1 | | | | | | | | |
| HP | 5 | | | | | | | | |
| VOLTS | 230/460 | | | | | | | | |
| AMPS | 13.2/6.6 | | | | | | | | |
| RPM | 1750 | | | | | | | | |
| FRAME | 184T | | HZ | 60 | | PH | 3 | | |
| SF | 1.15 | CODE | J | DES | B | CLASS | H | | |
| NEMA NOM. EFF | 89.5 | PF | 80 | | | | | | |
| RATING | 40C AMB-CONT | | | | | | | | |
| CC | 010A | | | | | | | | |
| ENCL | OPSB | SER | | | | | | | |
| DE | 6206 | ODE | 6205 | | | | | | |
| VPWM INVERTER READY | | | | | | | | | |
| CT30-60(2:1) VT3-60(20:1) | | | | | | | | | |

Parts list

| Part number | Description | Quantity |
|-------------|--|----------|
| SA271477 | SA 36Q133S270G1 | 1.000 ea |
| RA258105 | RA 36Q133S270G1 | 1.000 ea |
| 36CB3004 | 36 CB CASTING W/1.09 DIA LEAD HOLE @ 6:0 | 1.000 ea |
| 51XB1016A07 | 10-16 X 7/16 HXWSSLD SERTYB | 2.000 ea |
| 11XW1032G06 | 10-32 X .38, TAPTITE II, HEX WSHR SLTD U | 1.000 ea |
| HW3001B01 | BRASS CUP WASHER, FOR #10 SCREW | 1.000 ea |
| 36EP3204B00 | MASTER ODE,205 BRG,GRSR | 1.000 ea |
| HW4500A01 | 1641B(ALEMITE)400 UNIV, GREASE FITT | 1.000 ea |
| HW5100A05 | WVY WSHR F/205 & 304 BRGS | 1.000 ea |
| 36EP3205C00 | MASTER DE,206 BRG,1.197SH,GRSR,LCK BRG | 1.000 ea |
| 51XN2520A20 | SCREW, HEX WS SLT, ZN X | 2.000 ea |
| HW1001A25 | LOCKWASHER 1/4, ZINC PLT .493 OD, .255 I | 2.000 ea |
| HW4500A01 | 1641B(ALEMITE)400 UNIV, GREASE FITT | 1.000 ea |
| XY2520A12 | 1/4-20 HEX NUT, DIRECTIONAL SERRATIONS | 4.000 ea |
| 36CB4516 | 750LIPPED CB LID - GALVANNEAL | 1.000 ea |
| 51XW0832A07 | 8-32 X .44, TAPTITE II, HEX WSHR SLTD SE | 4.000 ea |
| HW2501E16 | KEY, 1/4 SQ X 1.750 | 1.000 ea |
| HA7000A02 | KEY RETAINER RING, 1 1/8 DIA, 1 3/8 DIA | 1.000 ea |
| 85XU0407S04 | 4X1/4 U DRIVE PIN STAINLESS | 2.000 ea |
| LB1508 | LABEL "SHAFT GROUNDING BRUSH" 1.50 X .81 | 1.000 ea |
| HA6362ZP | LIFTING LUG FOR 36 FRAME MOTORS. | 2.000 ea |
| MJ1000A02 | GREASE, POLYREX EM EXXON | 0.050 lb |
| MG1050Y01 | CELEROL BALDOR GOLD *** NLA IN 5 GALLON | 0.022 ga |
| HA3101A40 | THRUBOLT 1/4-20 X 12.687 | 4.000 ea |
| 36AD2009A01 | BAFFLE PLATE,MOD 36-OPSB INT SHAFT GRD | 2.000 ea |
| LC0005 | CONN.DIA.,TY M,9-LD,DUAL VOLT,REVERSING | 1.000 ea |
| MN416A01 | TAG-INSTAL-MAINT no wire (2500bx)4/22 | 1.000 ea |
| NP3553L | ALUM SUPER-E,VPWM INV READY,UL EV,CC,NEM | 1.000 ea |
| 36PA1000 | PKG GRP, PRINT PK1016A06 | 1.000 ea |
| PE-0000001 | ZRTG PE ASSEMBLY | 1.000 ea |
| FE-0000001 | ZRTG FE ASSEMBLY | 1.000 ea |

LB1624

COMBINED WARNING LABEL, ISO/ANSI PICTOGR

1.000 ea

AC Induction Motor Performance Data

Record # 53361

Typical performance - not guaranteed values

| Winding: 36WGS270-R006 | | Type: 3640M | | Enclosure: ODP | |
|-------------------------------|--------------------------|----------------------------|--|-----------------------|--|
| Nameplate Data | | | 460 V, 60 Hz: High Voltage Connection | | |
| Rated Output (HP) | 5 | Full Load Torque | 15 LB-FT | | |
| Volts | 230/460 | Start Configuration | direct on line | | |
| Full Load Amps | 13.2/6.6 | Breakdown Torque | 44.8 LB-FT | | |
| R.P.M. | 1750 | Pull-up Torque | 25.5 LB-FT | | |
| Hz | 60 Phase | 3 | Locked-rotor Torque | 30.1 LB-FT | |
| NEMA Design Code | B KVA Code | J | Starting Current | 44.8 A | |
| Service Factor (S.F.) | | 1.15 | No-load Current | 2.97 A | |
| NEMA Nom. Eff. | 89.5 Power Factor | 80 | Line-line Res. @ 25°C | 2.62 Ω | |
| Rating - Duty | | 40C AMB-CONT | Temp. Rise @ Rated Load | 44°C | |
| S.F. Amps | | | Temp. Rise @ S.F. Load | 54°C | |

Load Characteristics 460 V, 60 Hz, 5 HP

| % of Rated Load | 25 | 50 | 75 | 100 | 125 | 150 | S.F. |
|------------------------|-----------|-----------|-----------|------------|------------|------------|-------------|
| Power Factor | 42 | 64 | 75 | 80 | 83 | 84 | 82 |
| Efficiency | 84.4 | 89.3 | 89.8 | 89.4 | 88.3 | 86.2 | 88.7 |
| Speed | 1789 | 1779 | 1767 | 1754 | 1740 | 1722 | 1746 |
| Line amperes | 3.33 | 4.14 | 5.26 | 6.59 | 8.05 | 9.68 | 7.47 |

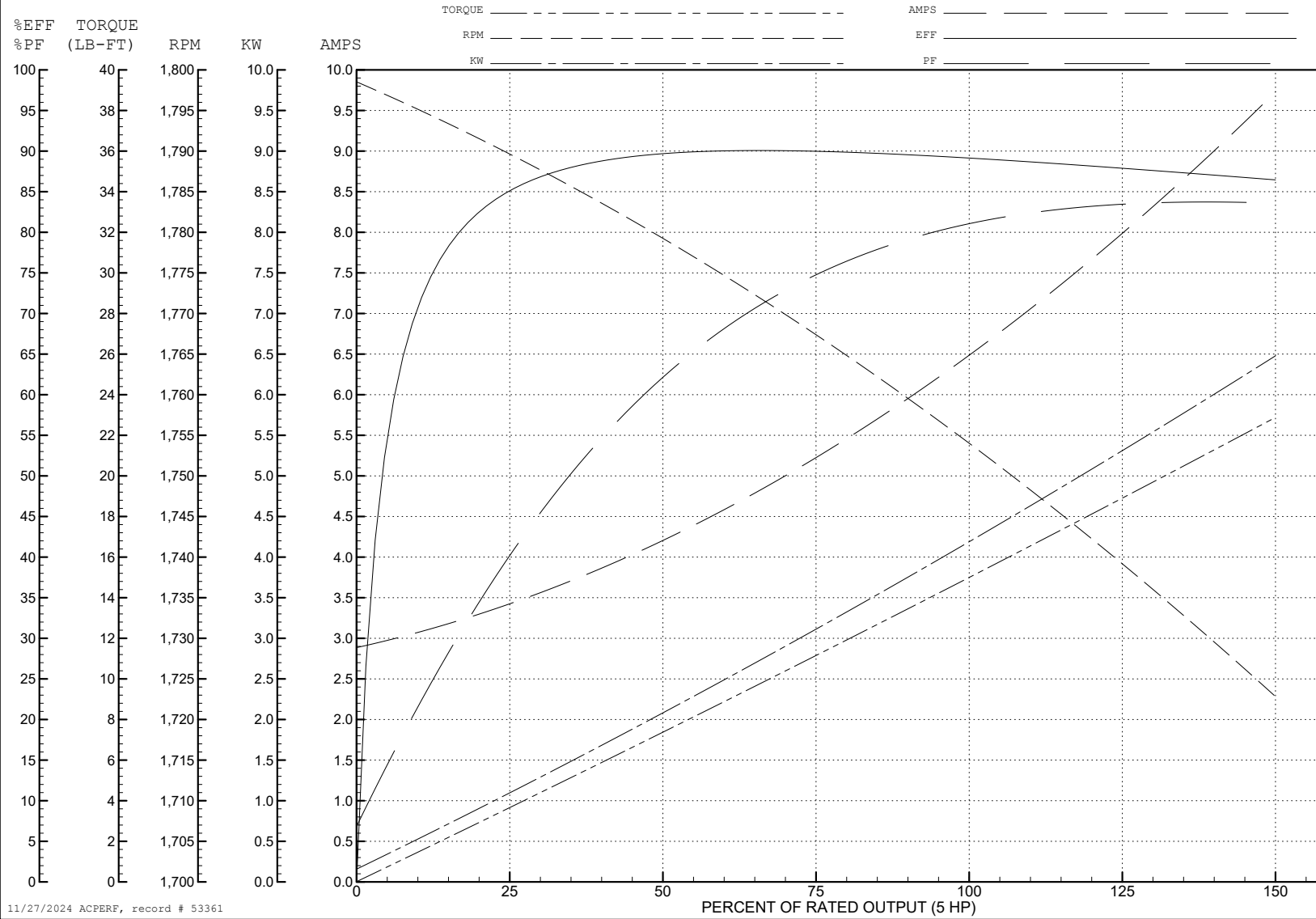
ABB Motors and Mechanical Inc.

WINDING # 36WGS270

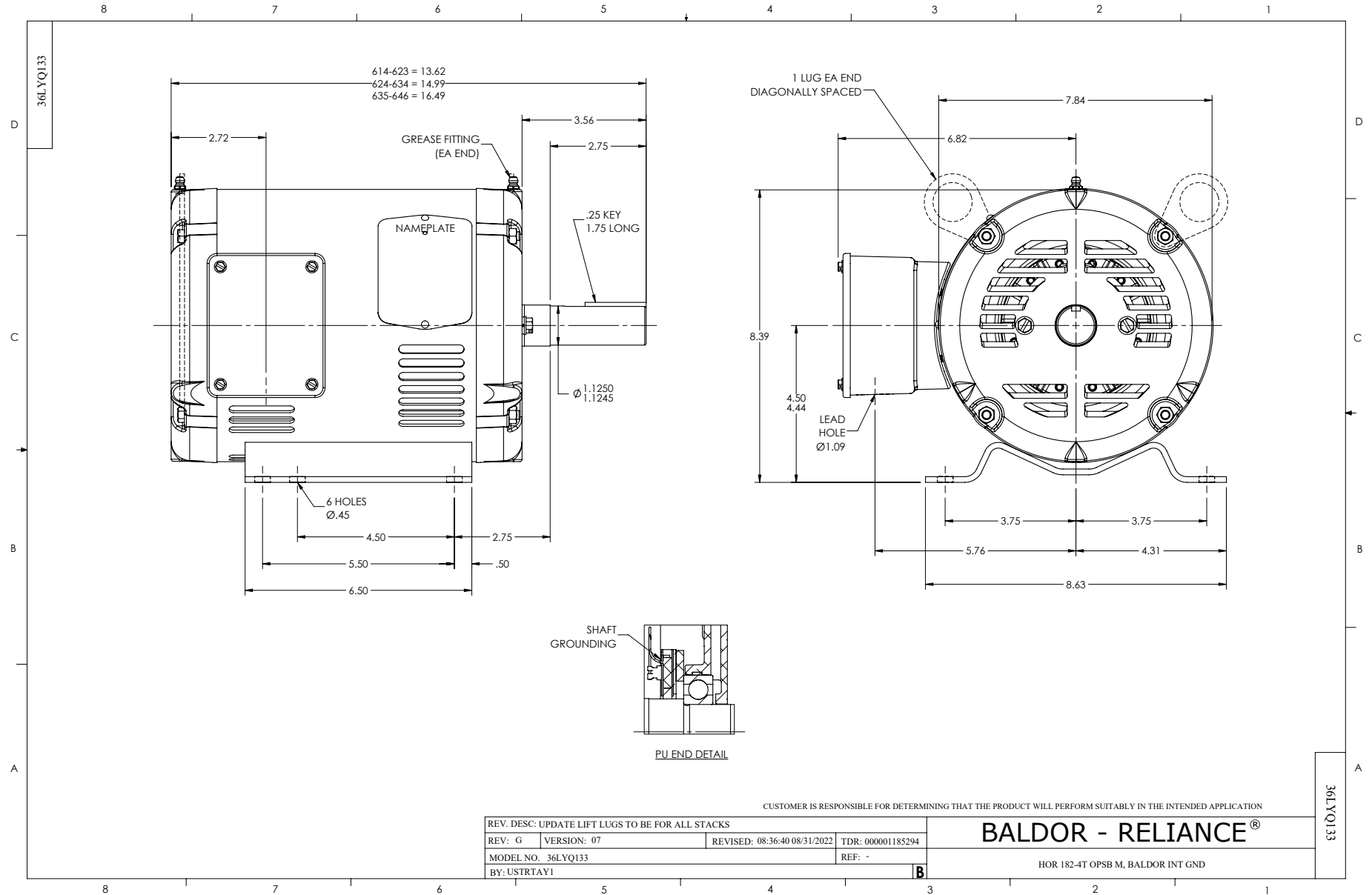
5 HP 3 PH 60 HZ 1750 RPM 460 V 3640M

Typical performance - not guaranteed values.

TORQUES (LB-FT): PO=44.8 PU=25.5 LR=30.1 LRA=44.8



11/27/2024 ACPERF, record # 53361



CD0005



LOW VOLTAGE
(2Y)



LINE

HIGH VOLTAGE
(1Y)



LINE

NOTES:

1. INTERCHANGE ANY TWO LINE LEADS TO REVERSE ROTATION.
2. OPTIONAL THERMOSTATS ARE PROVIDED WHEN SPECIFIED.
3. ACTUAL NUMBER OF INTERNAL PARALLEL CIRCUITS MAY BE A MULTIPLE OF THOSE SHOWN ABOVE.
4. LEAD COLORS ARE OPTIONAL. LEADS MUST ALWAYS BE NUMBERED AS SHOWN.

| | | | |
|---|---------|-------------------------|--------------|
| REV. DESC: REVISE TO SHOW OPTIONAL COLORS | | | |
| REV. LTR: E | BY: JLP | REVISED: 01/19/99 10:15 | TDR: 0171435 |
| S00000 | | FILE: AAA00005140 | MDL: - |
| | | MTL: - | |

BALDOR ELECTRIC Co.

3PH, DV, 9 LEADS

CD0005