



Customer information packet

EM3305T-G

3HP, 1165RPM, 3PH, 60HZ, 213T, 3734M, OPSB, F1

Class - None

Division - Not Applicable

Specifications

Enclosure	OPSB
Frame	213T
Frame Material	Steel
Frequency	60.00 Hz
Haz Area Class and Group	None
Haz Area Division	Not Applicable
Motor Letter Type	Three Phase
Output @ Frequency	3.000 HP @ 60 HZ
Phase	3
Synchronous Speed @ Frequency	1200 RPM @ 60 HZ
Voltage @ Frequency	460.0 V @ 60 HZ 230.0 V @ 60 HZ
Agency Approvals	CSA CSA EEV UR
Ambient Temperature	40 °C
Auxillary Box	No Auxillary Box
Auxillary Box Lead Termination	None
Base Indicator	Rigid
Bearing Grease Type	Polyrex EM (-20F +300F)
Blower	None
Current @ Voltage	9.000 A @ 230.0 V 9.400 A @ 208.0 V 4.500 A @ 460.0 V
Design Code	B
Drip Cover	No Drip Cover
Duty Rating	CONT
Efficiency @ 100% Load	88.5 %
Electrically Isolated Bearing	Not Electrically Isolated
Feedback Device	NO FEEDBACK
Front Face Code	Standard
Front Shaft Indicator	None

Part detail

Revision	Q
Type	AC
Mech. spec.	37J839
Base	
Status	PRD/A
Elec. spec.	37WGR333
Layout	37LYJ839
Eff. date	05-02-2024
CD Diagram	CD0005
Poles	06
Leads	9#14
Proprietary	False
Created date	10-16-2012

Heater Indicator	No Heater
High Voltage Full Load Amps	4.5 a
Insulation Class	H
Inverter Code	Inverter Ready
KVA Code	K
Lifting Lugs	Standard Lifting Lugs
Locked Bearing Indicator	Locked Bearing
Motor Lead Exit	Ko Box
Motor Lead Quantity/Wire Size	9 @ 14 AWG
Motor Lead Termination	Flying Leads
Motor Standards	NEMA
Motor Type	3734M
Mounting Arrangement	F1
Number of Poles	6
Overall Length	16.32 IN
Power Factor	70
Product Family	General Purpose
Pulley End Bearing Type	Ball
Pulley Face Code	Standard
Pulley Shaft Indicator	Standard
Rodent Screen	None
Service Factor	1.15
Shaft Diameter	1.375 IN
Shaft Extension Location	Pulley End
Shaft Ground Indicator	Shaft Grounding
Shaft Rotation	Reversible
Shaft Slinger Indicator	No Slinger
Speed	1165 rpm
Speed Code	Single Speed
Starting Method	Direct on line
Thermal Device - Bearing	None
Thermal Device - Winding	None
Vibration Sensor Indicator	No Vibration Sensor
Winding Thermal 1	None

Winding Thermal 2

None

Nameplate

NP1259L									
CAT.NO.	EM3305T-G								
SPEC.	37J839R333G1								
HP	3								
VOLTS	230/460								
AMP	9/4.5								
RPM	1165								
FRAME	213T		HZ	60		PH	3		
SER.F.	1.15	CODE	K	DES	B	CL	H		
NEMA-NOM-EFF	88.5	PF	70						
RATING	40C AMB-CONT								
CC	010A								
DE	6307		ODE	6206					
ENCL	OPSB	SN							

Parts list

Part number	Description	Quantity
SA252725	SA 37J839R333G1	1.000 ea
RA239550	RA 37J839R333G1	1.000 ea
HA6361A01	LIFTING LUG FOR 37, 39 & 40 FRAME ZINC	2.000 ea
37CB3006	37 CB CASTING W/1.38 LEAD HOLE @ 6:00	1.000 ea
51XW2520A10	.25-20 X .62, TAPTITE II, HEX WSHR SLTD	2.000 ea
11XW1032G06	10-32 X .38, TAPTITE II, HEX WSHR SLTD U	1.000 ea
37EP3203A00	MASTER,ODE,206 BRG,GREASER	1.000 ea
HW5100A06	W2420-025 WVY WSHR (WB)	1.000 ea
37EP3204B00	MASTER,DE,307 BRG,GREASER,LOCKED BEARING	1.000 ea
10XN2520A28	1/4-20X 1 3/4 HEX HD	4.000 ea
HW1001A25	LOCKWASHER 1/4, ZINC PLT .493 OD, .255 I	4.000 ea
HW4500A01	1641B(ALEMITE)400 UNIV, GREASE FITT	1.000 ea
MG1050Y01	CELEROL BALDOR GOLD *** NLA IN 5 GALLON	0.028 ga
XY3118A12	5/16-18 HEX NUT DIRECTIONAL SERRATION	4.000 ea
37CB4516	LIPPED LID FOR 37 FRAME NEC KOBX	1.000 ea
51XW0832A07	8-32 X .44, TAPTITE II, HEX WSHR SLTD SE	4.000 ea
HW2501F21	KEY, 5/16 SQ X 2.375	1.000 ea
HA7000A02	KEY RETAINER RING, 1 1/8 DIA, 1 3/8 DIA	1.000 ea
85XU0407S04	4X1/4 U DRIVE PIN STAINLESS	2.000 ea
LB1459	AEGIS SGR LABEL "AEGISLBL-100"	1.000 ea
MJ1000A02	GREASE, POLYREX EM EXXON	0.050 lb
HW4500A01	1641B(ALEMITE)400 UNIV, GREASE FITT	1.000 ea
HA3104A39	THRUBOLT-5/16-18 X 12.250	4.000 ea
37AD2001A01	BAFFLE PLATE, PLASTIC 0.63" WIDTH	2.000 ea
LC0005	CONN.DIA.,TY M,9-LD,DUAL VOLT,REVERSING	1.000 ea
NP1259L	ALUM SUPER-E UL CC NEMA PREMIUM A60	1.000 ea
36PA1001	PKG GRP, PRINT PK1017A06	1.000 ea
MN416A01	TAG-INSTAL-MAINT no wire (2500bx)4/22	1.000 ea
LB1350	BAR CODE LABEL FOR YORK	1.000 ea
FE-0000001	ZRTG FE ASSEMBLY	1.000 ea
PE-0000001	ZRTG PE ASSEMBLY	1.000 ea

LB1624

COMBINED WARNING LABEL, ISO/ANSI PICTOGR

1.000 ea

AC Induction Motor Performance Data

Record # 53382

Typical performance - not guaranteed values

Winding: 37WGR333-R006		Type: 3734M	Enclosure: OPSB	
Nameplate Data			460 V, 60 Hz: High Voltage Connection	
Rated Output (HP)	3	Full Load Torque	13.59 LB-FT	
Volts	230/460	Start Configuration	direct on line	
Full Load Amps	9/4.5	Breakdown Torque	46.48 LB-FT	
R.P.M.	1165	Pull-up Torque	21.64 LB-FT	
Hz	60 Phase	Locked-rotor Torque	35.84 LB-FT	
NEMA Design Code	B KVA Code	Starting Current	31.11 A	
Service Factor (S.F.)	1.15	No-load Current	2.38 A	
NEMA Nom. Eff.	88.5 Power Factor	Line-line Res. @ 25°C	3.48 Ω	
Rating - Duty	40C AMB-CONT	Temp. Rise @ Rated Load	20°C	
S.F. Amps		Temp. Rise @ S.F. Load	24°C	
		Locked-rotor Power Factor	25.2	
		Rotor inertia	0.846 LB-FT ²	

Load Characteristics 460 V, 60 Hz, 3 HP

% of Rated Load	25	50	75	100	125	150	S.F.
Power Factor	34	53	64	71	74	76	73
Efficiency	82.9	88.4	89.4	88.9	88	86.1	88.4
Speed	1192	1185	1177	1168	1158	1147	1161
Line amperes	2.57	3.06	3.73	4.49	5.41	6.45	5.04

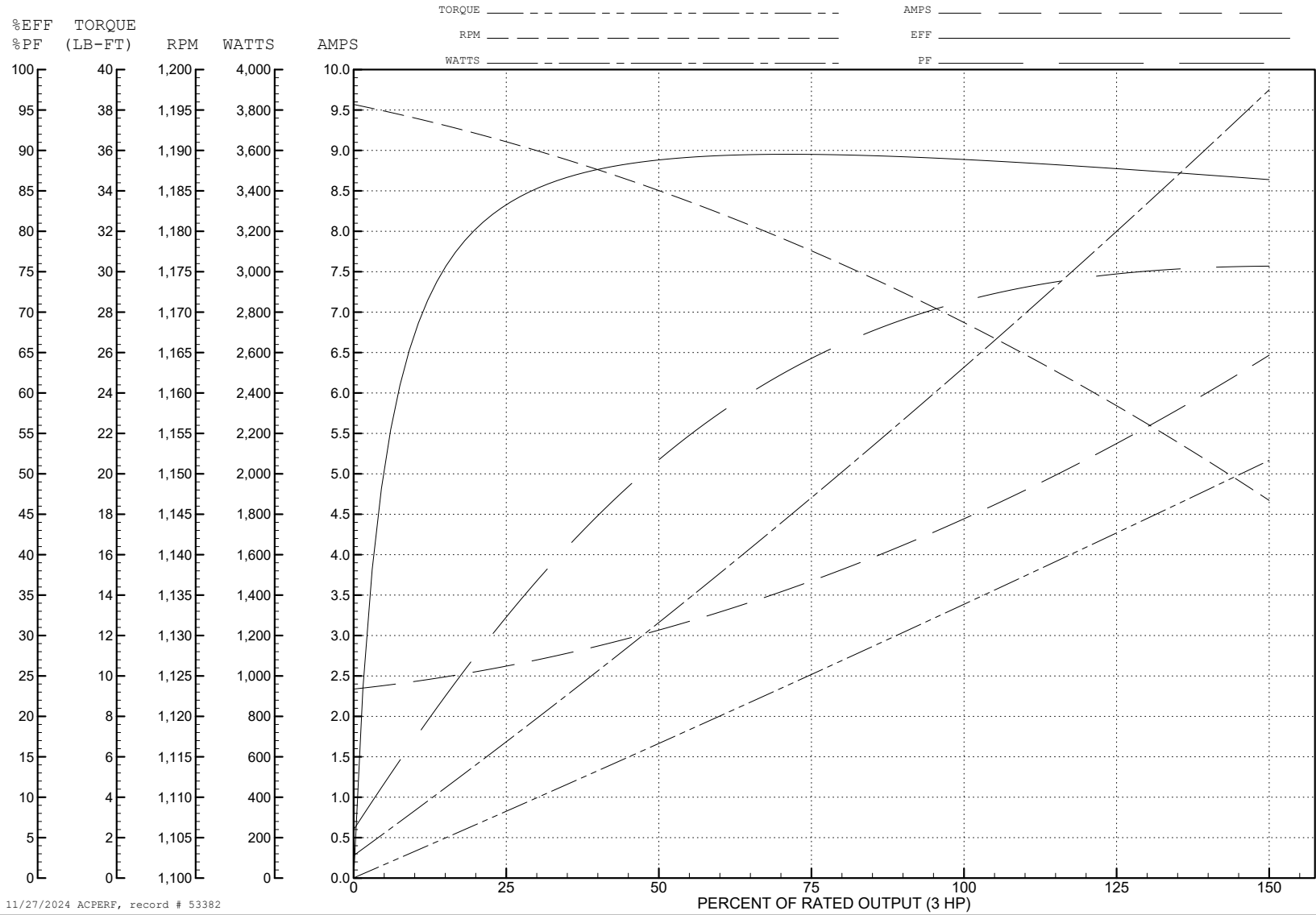
ABB Motors and Mechanical Inc.

WINDING # 37WGR333

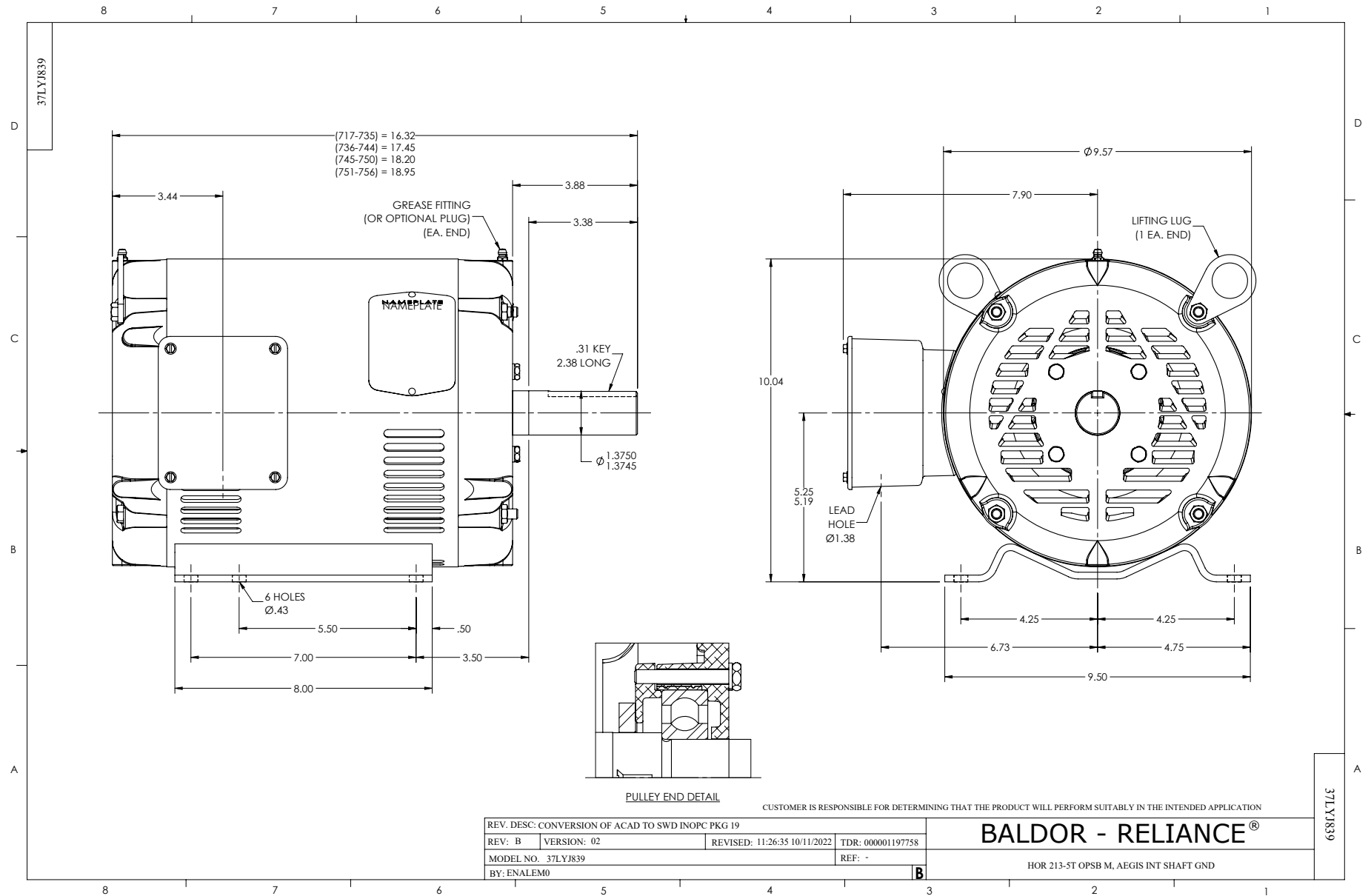
3 HP 3 PH 60 HZ 1165 RPM 460 V 3734M

Typical performance - not guaranteed values.

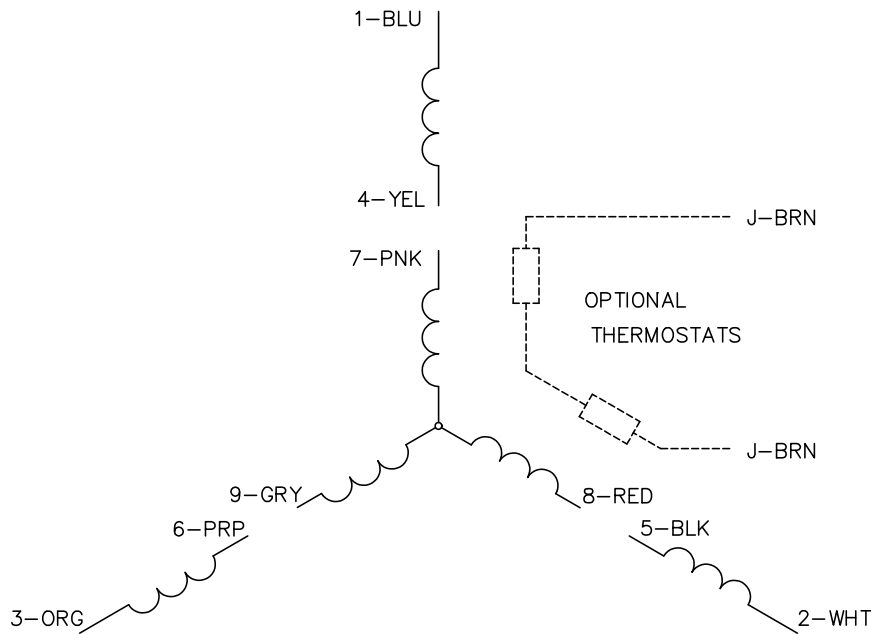
TORQUES (LB-FT): PO=46.48 PU=21.64 LR=35.84 LRA=31.11



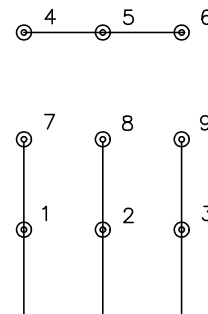
11/27/2024 ACPERF, record # 53382



CD0005

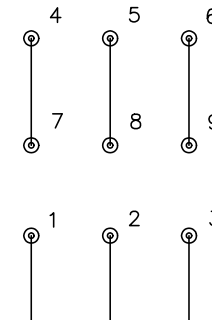


LOW VOLTAGE (2Y)



LINE

HIGH VOLTAGE (1Y)



LINE

NOTES:

1. INTERCHANGE ANY TWO LINE LEADS TO REVERSE ROTATION.
2. OPTIONAL THERMOSTATS ARE PROVIDED WHEN SPECIFIED.
3. ACTUAL NUMBER OF INTERNAL PARALLEL CIRCUITS MAY BE A MULTIPLE OF THOSE SHOWN ABOVE.
4. LEAD COLORS ARE OPTIONAL. LEADS MUST ALWAYS BE NUMBERED AS SHOWN.

CD0005

REV. DESC: REVISE TO SHOW OPTIONAL COLORS			
REV. LTR: E	BY: JLP	REVISED: 01/19/99 10:15	TDR: 0171435
S00000		FILE: AAA00005140	MDL: -
		MTL: -	

BALDOR ELECTRIC Co.

3PH, DV, 9 LEADS