



Customer information packet

EMVM3545D

.75KW, 3450RPM, 3PH, 60HZ, D80D, 3420M, TEFC, B

Class - None

Division - Not Applicable

Specifications

Enclosure	TEFC
Frame	D80D
Frame Material	Steel
Frequency	60.00 Hz
Haz Area Class and Group	None
Haz Area Division	Not Applicable
Motor Letter Type	Three Phase
Output @ Frequency	.750 KW @ 60 HZ
Phase	3
Synchronous Speed @ Frequency	3600 RPM @ 60 HZ
Voltage @ Frequency	230.0 V @ 60 HZ 460.0 V @ 60 HZ
Agency Approvals	CSA EEV CSA UR
Ambient Temperature	40 °C
Auxillary Box	No Auxillary Box
Auxillary Box Lead Termination	None
Base Indicator	No Mounting
Bearing Grease Type	Polyrex EM (-20F +300F)
Blower	None
Current @ Voltage	1.600 A @ 460.0 V 3.200 A @ 230.0 V
Design Code	B
Drip Cover	No Drip Cover
Duty Rating	CONT
Efficiency @ 100% Load	77.0 %
Electrically Isolated Bearing	Not Electrically Isolated
Feedback Device	NO FEEDBACK
Frame Prefix	D
Front Face Code	Standard
Front Shaft Indicator	None

Part detail

Revision	K
Type	AC
Mech. spec.	34H339
Base	
Status	PRD/A
Elec. spec.	34WG3226
Layout	34LYH339
Eff. date	10-29-2024
CD Diagram	CD0005
Poles	02
Leads	9#18
Proprietary	False
Created date	05-05-2015

Heater Indicator	No Heater
High Voltage Full Load Amps	1.6 a
Insulation Class	F
Inverter Code	Not Inverter
KVA Code	L
Lifting Lugs	No Lifting Lugs
Locked Bearing Indicator	No Locked Bearing
Motor Lead Exit	Ko Box
Motor Lead Quantity/Wire Size	9 @ 18 AWG
Motor Lead Termination	Flying Leads
Motor Standards	IEC
Motor Type	3420M
Mounting Arrangement	B5
Number of Poles	2
Overall Length	10.73 IN
Power Factor	82
Product Family	General Purpose
Pulley End Bearing Type	Ball
Pulley Face Code	D-Flange
Pulley Shaft Indicator	Tapped & Key
Rodent Screen	None
RoHS Status	ROHS COMPLIANT
Service Factor	1.15
Shaft Diameter	0.748 IN
Shaft Extension Location	Pulley End
Shaft Ground Indicator	No Shaft Grounding
Shaft Rotation	Reversible
Shaft Slinger Indicator	No Slinger
Speed	3450 rpm
Speed Code	Single Speed
Starting Method	Direct on line
Thermal Device - Bearing	None
Thermal Device - Winding	None
Vibration Sensor Indicator	No Vibration Sensor

Winding Thermal 1	None
Winding Thermal 2	None

Nameplate

NP3386L									
CAT.NO.	EMVM3545D								
SPEC.	34H339-3226G1								
IEC FRAME	D80D	KW	.75						
VOLTS	230/460								
AMP	3.2/1.6								
RPM	3450	ENCL	TEFC						
HZ	60	PH	3	CL	F				
SER.F.	1.15	DES	B	CODE	L				
NEMA-NOM-EFF	77	I.P.	44						
RATING	40C AMB-CONT								
CC	010A	USABLE AT 208V	N/A						
DE	6205	ODE	6203						
SER. #									

Parts list

Part number	Description	Quantity
SA300197	SA 34H339-3226G1	1.000 ea
RA287247	RA 34H339-3226G1	1.000 ea
NS2512A01	INSULATOR, CONDUIT BOX X	1.000 ea
34CB3002A	CB CAST W/.88 DIA HOLE	1.000 ea
34GS1029A01	GASKET, CONDUIT BOX	1.000 ea
51XB1016A07	10-16 X 7/16 HXWSSLD SERTYB	2.000 ea
11XW1032G06	10-32 X .38, TAPTITE II, HEX WSHR SLTD U	1.000 ea
34EP3102A01SP	FR ENDPLATE, MACH	1.000 ea
HW5100A03	WAVY WASHER (W1543-017)	1.000 ea
34EP2503A01	FLG MTG EP IEC F165 ENCL 205 BRG MACH.	1.000 ea
HW4600H11	SEAL 0.938 X 1.624 X 0.250 SINGLE LIP DB	1.000 ea
34FN3002A01SP	EXTERNAL FAN, PLASTIC, .637/.639 HUB W/	1.000 ea
34FH4002A01SP	IEC FH NO GREASER PRIMED	1.000 ea
51XW1032A06	10-32 X .38, TAPTITE II, HEX WSHR SLTD S	3.000 ea
34CB4517	CB LID 4 MTG HOLES .22 DIA STAMPED, FOR	1.000 ea
34GS1031A01	GASKET, FLAT CONDUIT BOX LID (LEXIDE)	1.000 ea
51XW0832A07	8-32 X .44, TAPTITE II, HEX WSHR SLTD SE	4.000 ea
HW2504E10	KEY, 6 MM X 1.000	1.000 ea
HA7000A11	KEY RETAINER 0.750 DIA SHAFTS	1.000 ea
MJ5001A27	32220KN GRAY SEALER *MIN BUY 4 QTS=1GAL	0.001 qt
MG1050Y01	CELEROL BALDOR GOLD *** NLA IN 5 GALLON	0.014 ga
HA3100A48	THRUBOLT 10-32 X 7.188	4.000 ea
85XU0407S04	4X1/4 U DRIVE PIN STAINLESS	2.000 ea
MN416A01	TAG-INSTAL-MAINT no wire (2500bx)4/22	1.000 ea
LB1624	COMBINED WARNING LABEL, ISO/ANSI PICTOGR	1.000 ea
LC0005	CONN.DIA.,TY M,9-LD,DUAL VOLT,REVERSING	1.000 ea
NP3386L	ALUM SUPER-E IEC UL CSA-EEV CC	1.000 ea
35PA1066	PKG GRP, PRINT PK1008A06	1.000 ea
PK3083	STYROFOAM PACKING CRADLE	1.000 ea
PK3088	MICROFOAM, 8"X"8 PERF. SHEETS	1.000 ea

AC Induction Motor Performance Data

Record # 50613

Typical performance - not guaranteed values

Winding: 34WG3226-R054		Type: 3420M	Enclosure: TEFC	
Nameplate Data			460 V, 60 Hz: High Voltage Connection	
Rated Output (KW)	.75	Full Load Torque	1.518 LB-FT	
Volts	230/460	Start Configuration	direct on line	
Full Load Amps	3.2/1.6	Breakdown Torque	7.966 LB-FT	
R.P.M.	3450	Pull-up Torque	6.2 LB-FT	
Hz	60 Phase	Locked-rotor Torque	8.7 LB-FT	
NEMA Design Code	B KVA Code	Starting Current	14.5 A	
Service Factor (S.F.)	1.15	No-load Current	0.913 A	
NEMA Nom. Eff.	77 Power Factor	Line-line Res. @ 25°C	13.6 Ω	
Rating - Duty	40C AMB-CONT	Temp. Rise @ Rated Load	55°C	
S.F. Amps		Temp. Rise @ S.F. Load	74°C	
		Locked-rotor Power Factor	63.6	

Load Characteristics 460 V, 60 Hz, 0.75 KW

% of Rated Load	25	50	75	100	125	150	S.F.
Power Factor	41	59	72	80	85	89	87
Efficiency	57.7	71.5	77.1	79.3	79.9	79.7	79.8
Speed	3560	3536	3506	3475	3445	3406	3422
Line amperes	0.967	1.09	1.27	1.47	1.7	1.99	1.87

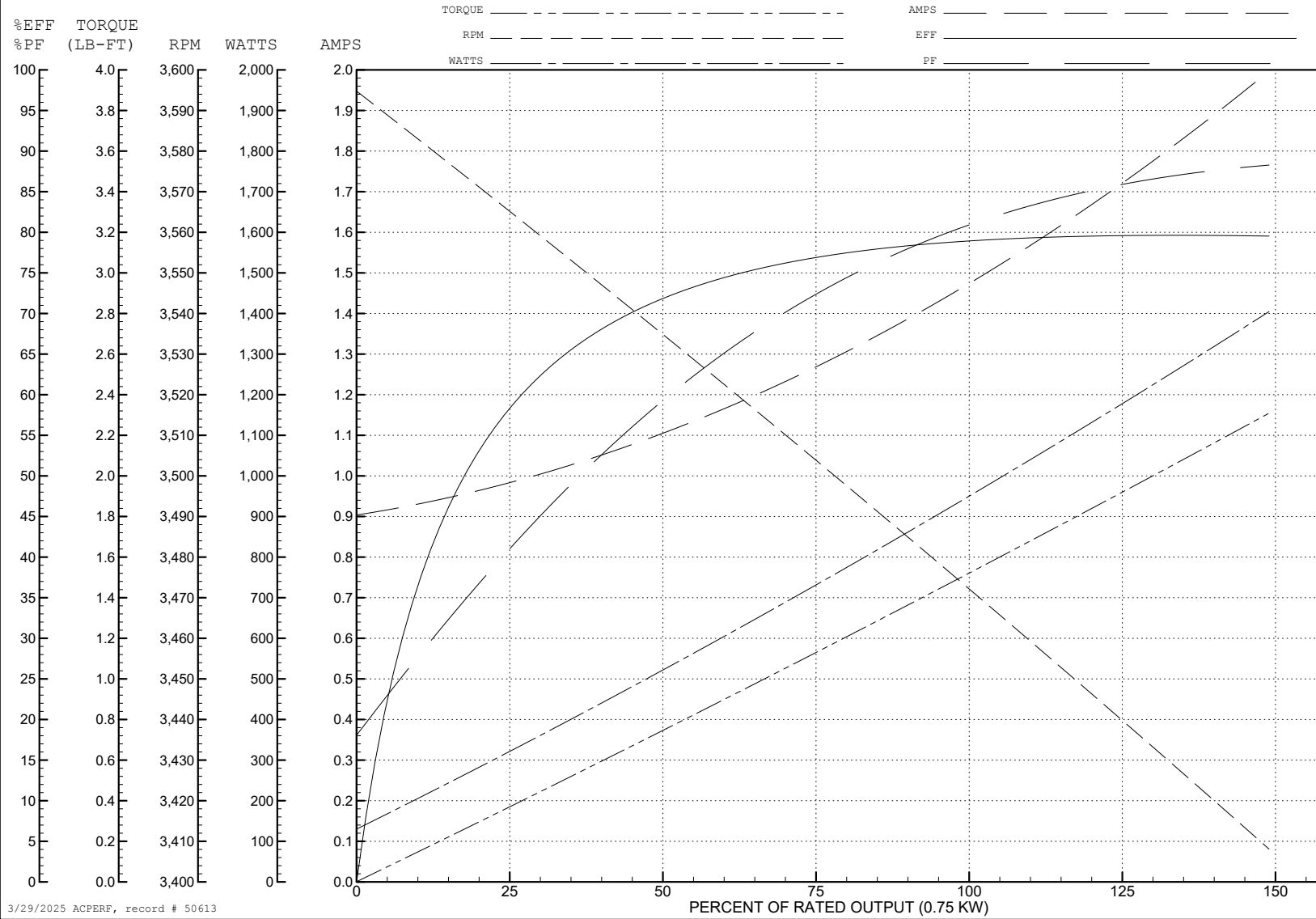
ABB Motors and Mechanical Inc.

WINDING # 34WG3226

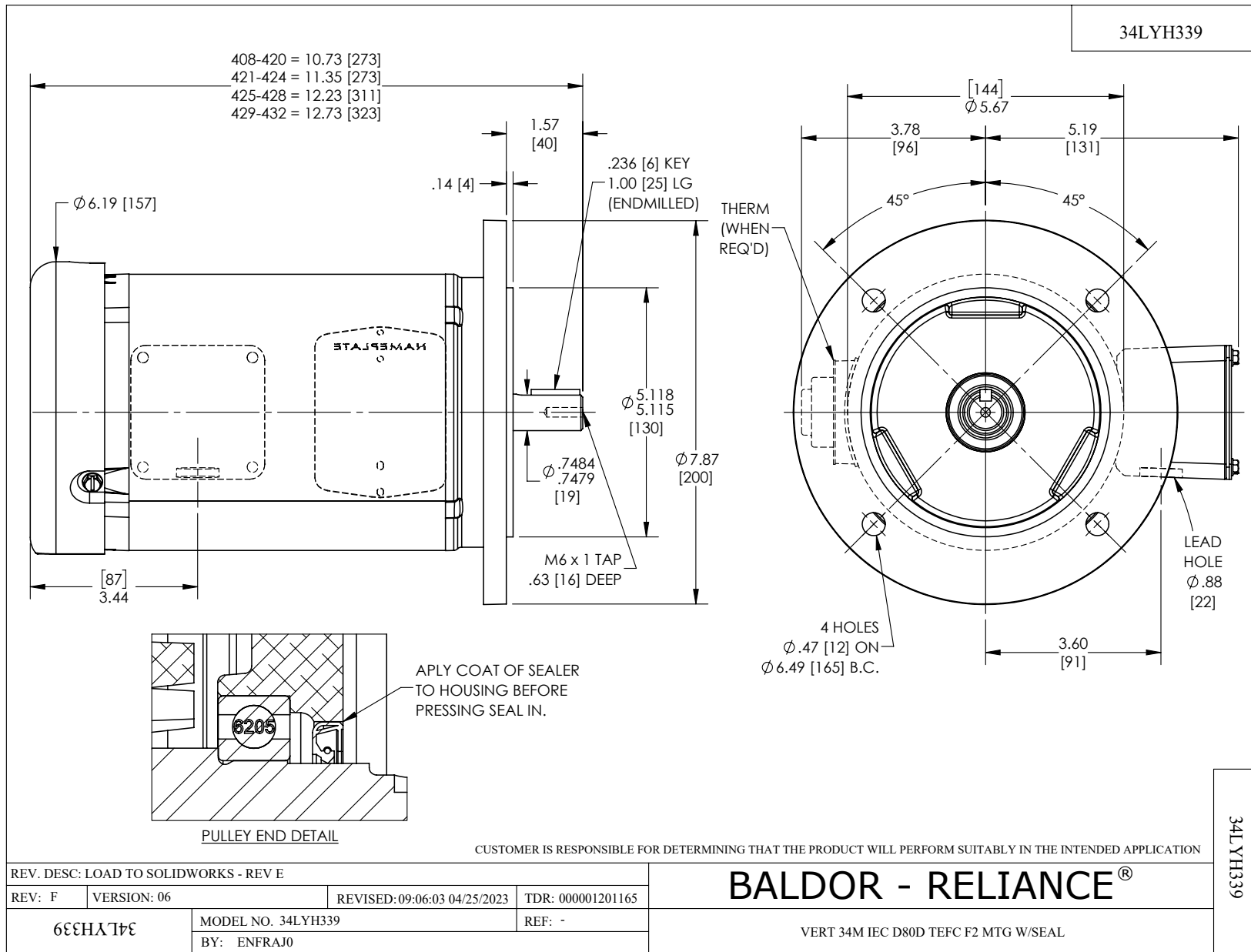
0.75 KW 3 PH 60 HZ 3450 RPM 460 V 3420M

Typical performance - not guaranteed values.

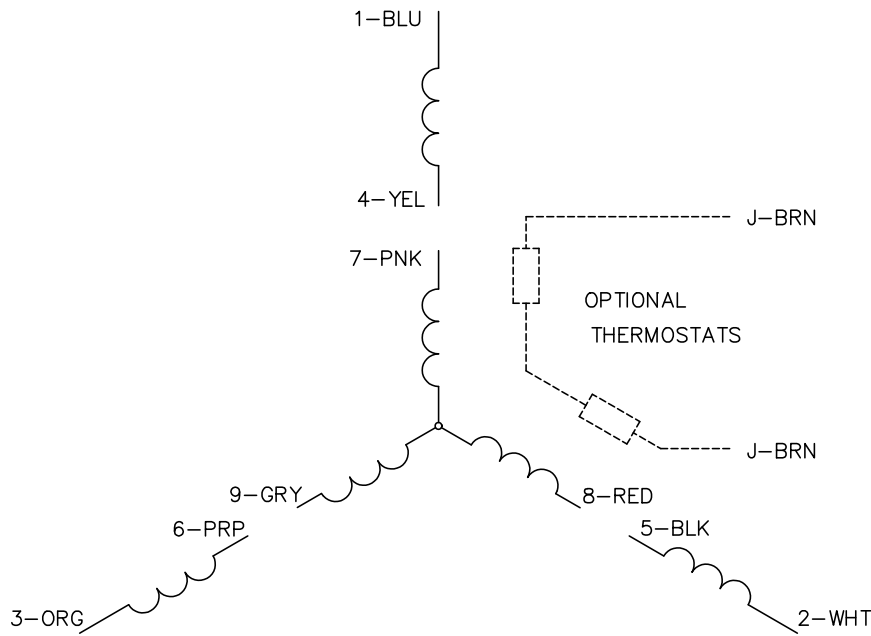
TORQUES (LB-FT): PO=7.966 PU=6.2 LR=8.7 LRA=14.5



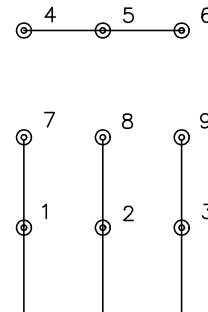
3/29/2025 ACPERF, record # 50613



CD0005

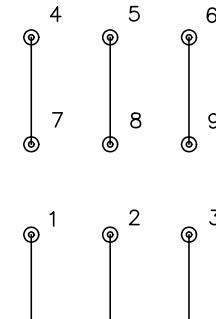


LOW VOLTAGE
(2Y)



LINE

HIGH VOLTAGE
(1Y)



LINE

NOTES:

1. INTERCHANGE ANY TWO LINE LEADS TO REVERSE ROTATION.
2. OPTIONAL THERMOSTATS ARE PROVIDED WHEN SPECIFIED.
3. ACTUAL NUMBER OF INTERNAL PARALLEL CIRCUITS MAY BE A MULTIPLE OF THOSE SHOWN ABOVE.
4. LEAD COLORS ARE OPTIONAL. LEADS MUST ALWAYS BE NUMBERED AS SHOWN.

CD0005

REV. DESC: REVISE TO SHOW OPTIONAL COLORS			
REV. LTR: E	BY: JLP	REVISED: 01/19/99 10:15	TDR: 0171435
S00000		FILE: AAA00005140	MDL: -
		MTL: -	

BALDOR ELECTRIC Co.

3PH, DV, 9 LEADS