

BALDOR • RELIANCE

Customer information packet

EMVM3546D

0.75KW, 1770RPM, 3PH, 60HZ, D80D, 3520M, TEFC

Class - None

Division - Not Applicable

Specifications

Enclosure	TEFC
Frame	D80D
Frame Material	Steel
Frequency	60.00 Hz
Haz Area Class and Group	None
Haz Area Division	Not Applicable
Motor Letter Type	Three Phase
Output @ Frequency	.750 KW @ 60 HZ
Phase	3
Synchronous Speed @ Frequency	1800 RPM @ 60 HZ
Voltage @ Frequency	230.0 V @ 60 HZ 460.0 V @ 60 HZ
Agency Approvals	CSA EEV UR
Ambient Temperature	40 °C
Auxillary Box	No Auxillary Box
Auxillary Box Lead Termination	None
Base Indicator	No Mounting
Bearing Grease Type	Polyrex EM (-20F +300F)
Blower	None
Current @ Voltage	1.600 A @ 460.0 V 3.200 A @ 208.0 V 3.200 A @ 230.0 V
Design Code	B
Drip Cover	No Drip Cover
Duty Rating	CONT
Efficiency @ 100% Load	85.5 %
Electrically Isolated Bearing	Not Electrically Isolated
Feedback Device	NO FEEDBACK
Frame Prefix	D
Front Shaft Indicator	None
Heater Indicator	No Heater

Part detail

Revision	A
Type	AC
Mech. spec.	35Q176
Base	
Status	PRD/A
Elec. spec.	35WGG004
Layout	35LYQ176
Eff. date	04-30-2024
CD Diagram	CD0005
Poles	04
Leads	9#18
Proprietary	False
Created date	03-11-2022

High Voltage Full Load Amps	1.6 a
Insulation Class	F
Inverter Code	Inverter Ready
KVA Code	N
Lifting Lugs	No Lifting Lugs
Locked Bearing Indicator	Locked Bearing
Motor Lead Quantity/Wire Size	9 @ 18 AWG
Motor Lead Termination	Flying Leads
Motor Standards	IEC
Motor Type	3520M
Mounting Arrangement	B5
Number of Poles	4
Overall Length	11.61 IN
Power Factor	69
Product Family	General Purpose
Pulley End Bearing Type	Ball
Pulley Face Code	D-Flange
Pulley Shaft Indicator	Tapped & Key
Rodent Screen	None
Service Factor	1.15
Shaft Diameter	0.748 IN
Shaft Ground Indicator	No Shaft Grounding
Shaft Rotation	Reversible
Shaft Slinger Indicator	No Slinger
Speed	1770 rpm
Speed Code	Single Speed
Starting Method	Direct on line
Thermal Device - Bearing	None
Thermal Device - Winding	None
Vibration Sensor Indicator	No Vibration Sensor
Winding Thermal 1	None
Winding Thermal 2	None

Nameplate

NP3386L			
CAT.NO.	EMVM3546D		
SPEC.	35Q176G004G1		
IEC FRAME	D80D	KW	0.75
VOLTS	230/460		
AMP	3.2/1.6		
RPM	1770	ENCL	TEFC
HZ	60	PH	3 CL F
SER.F.	1.15	DES	B CODE N
NEMA-NOM-EFF	85.5	I.P.	54
RATING	40C AMB-CONT		
CC	010A	USABLE AT 208V	N/A
DE	6205	ODE	6203
SER. #	SFA 3.4/1.7		

Parts list

Part number	Description	Quantity
SA409194	SA 35Q176G004G1	1.000 ea
RA400739	RA 35Q176G004G1	1.000 ea
34FN3002B01	EXTERNAL FAN, PLASTIC, .637/.639 HUB W/	1.000 ea
NS2512A01	INSULATOR, CONDUIT BOX X	1.000 ea
35CB3007	35 CB CASTING W/.88 DIA. LEAD HOLE	1.000 ea
36GS1000SP	GASKET-CONDUIT BOX, .06 THICK #SV-330 LE	1.000 ea
51XB1016A07	10-16 X 7/16 HXWSSLD SERTYB	2.000 ea
11XW1032G06	10-32 X .38, TAPTITE II, HEX WSHR SLTD U	1.000 ea
35EP3122A00	MASTER ODE,203 BRG,.683SH,#26 DRN,GRSR,F	1.000 ea
HW4500A01	1641B(ALEMITE)400 UNIV, GREASE FITT	1.000 ea
HW5100A03	WAVY WASHER (W1543-017)	1.000 ea
35EP1518A01	MODEL 35 IEC FF165 MACH. 80 & D90 205 BR	1.000 ea
HW4500A01	1641B(ALEMITE)400 UNIV, GREASE FITT	1.000 ea
HW4600A30	GARLOCK 63X273 SINGLE LIP SEAL	1.000 ea
51XN1032A20	10-32 X 1 1/4 HX WS SL SR	2.000 ea
51XB1214A16	12-14X1.00 HXWSSLD SERTYB	1.000 ea
35FH4005A84SP	IEC FH W/GRSR, NO DIMPLES PRIMED	1.000 ea
51XW1032A06	10-32 X .38, TAPTITE II, HEX WSHR SLTD S	3.000 ea
35CB4521GX	CONDUIT BOX LID KIT **ORDER INDIV PARTS	1.000 ea
51XW0832A07	8-32 X .44, TAPTITE II, HEX WSHR SLTD SE	4.000 ea
HW2504E10	KEY, 6 MM X 1.000	1.000 ea
MJ5001A27	32220KN GRAY SEALER *MIN BUY 4 QTS=1GAL	0.001 qt
85XU0407S04	4X1/4 U DRIVE PIN STAINLESS	2.000 ea
MJ1000A02	GREASE, POLYREX EM EXXON	0.050 lb
MG1050Y01	CELEROL BALDOR GOLD *** NLA IN 5 GALLON	0.017 ga
HA3100A80	THRUBOLT 10-32 X 7.500	4.000 ea
MN416A01	TAG-INSTAL-MAINT no wire (2500bx)4/22	1.000 ea
LC0005E01	CONN.DIA./WARNING LABEL (LC0005/LB1119N)	1.000 ea
NP3386L	ALUM SUPER-E IEC UL CSA-EEV CC	1.000 ea
35PA1066	PKG GRP, PRINT PK1008A06	1.000 ea
PK3082	STYROFOAM CRADLE	1.000 ea

FE-0000001

ZRTG FE ASSEMBLY

1.000 ea

AC Induction Motor Performance Data

Record # 87097

Preliminary Data Sheet

Winding: 35WGG004-R011		Type: 3520M	Enclosure: TEFC	
Nameplate Data			460 V, 60 Hz: High Voltage Connection	
Rated Output (KW)	.75	Full Load Torque	2.99 LB-FT	
Volts	230/460	Start Configuration	direct on line	
Full Load Amps	3.2/1.6	Breakdown Torque	13.68 LB-FT	
R.P.M.	1770	Pull-up Torque	7.85 LB-FT	
Hz	60 Phase	3	Locked-rotor Torque	9.01 LB-FT
NEMA Design Code	B KVA Code	N	Starting Current	14.13 A
Service Factor (S.F.)	1.15	No-load Current	1.08 A	
NEMA Nom. Eff.	85.5 Power Factor	69	Line-line Res. @ 25°C	16.9 Ω
Rating - Duty	40C AMB-CONT	Temp. Rise @ Rated Load	24°C	
S.F. Amps	3.4/1.7	Temp. Rise @ S.F. Load	28°C	
		Locked-rotor Power Factor	61.5	
		Rotor inertia	0.144 lb-ft ²	

Load Characteristics 460 V, 60 Hz, 0.75 KW

% of Rated Load	25	50	75	100	125	150	S.F.
Power Factor	30	48	60	69	76	79	73
Efficiency	72.1	81.7	84.6	85.7	85.5	84.7	85.6
Speed	1791	1784	1776	1768	1759	1750	1763
Line amperes	1.11	1.22	1.38	1.6	1.83	2.1	1.74

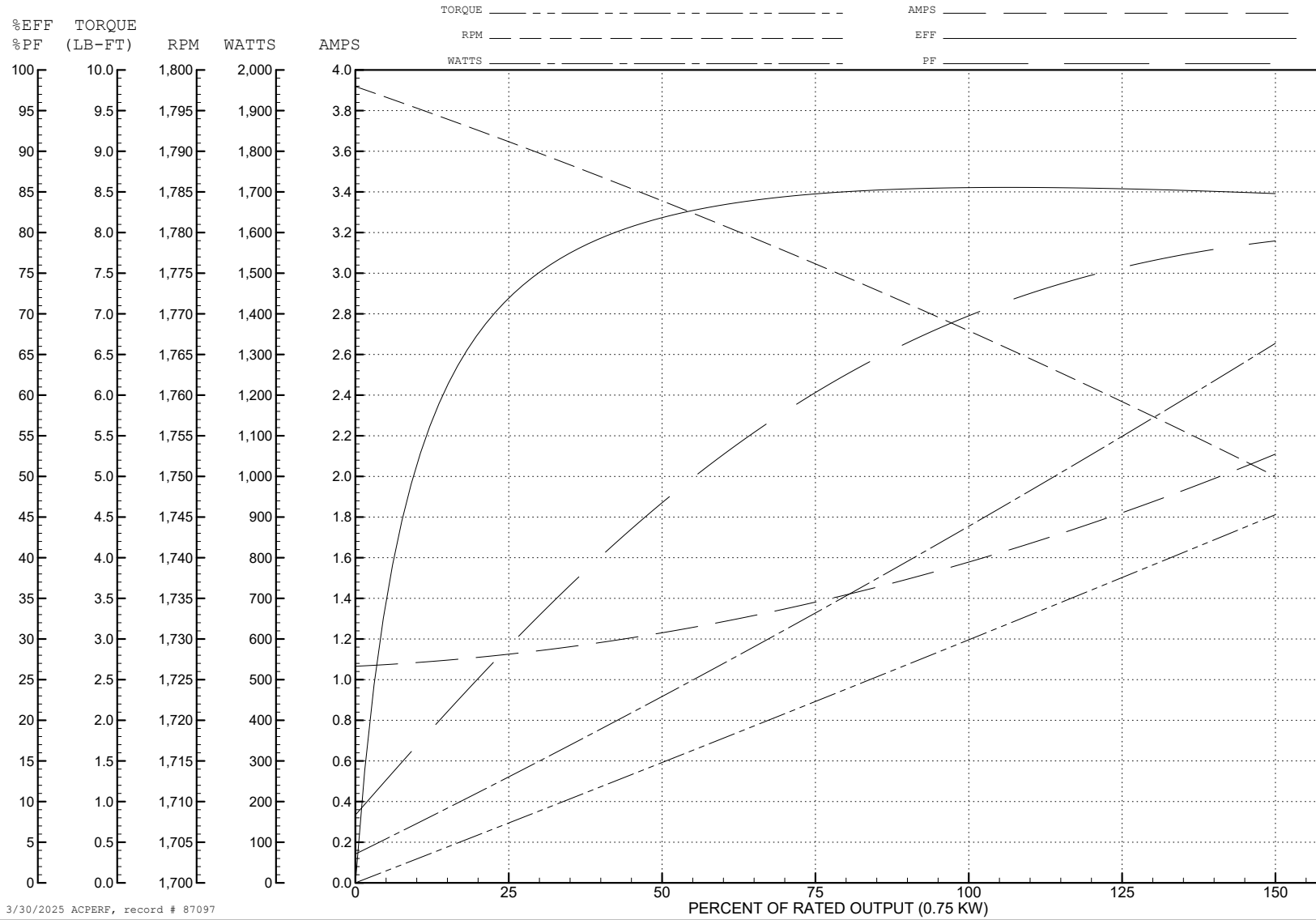
ABB Motors and Mechanical Inc.

WINDING # 35WGG004

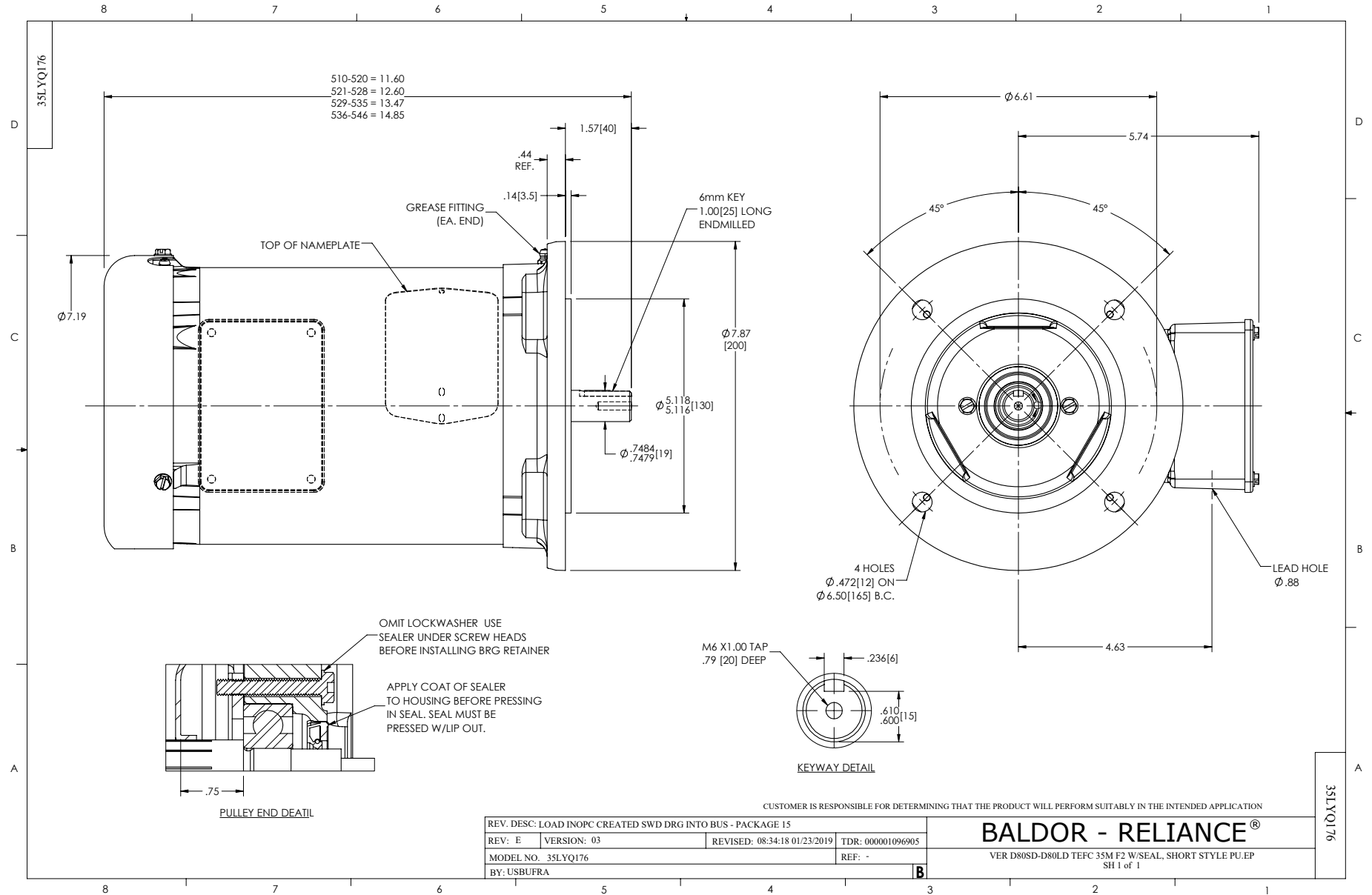
Typical performance - not guaranteed values.

0.75 KW 3 PH 60 HZ 1770 RPM 460 V 3520M

TORQUES (LB-FT): PO=13.68 PU=7.85 LR=9.01 LRA=14.13



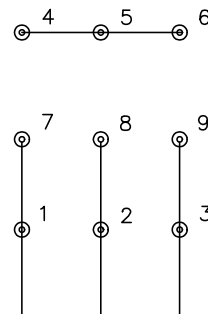
3/30/2025 ACPERF, record # 87097



CD0005

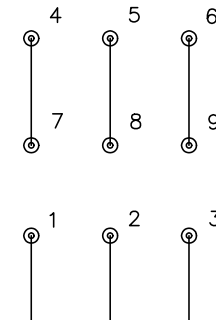


LOW VOLTAGE
(2Y)



LINE

HIGH VOLTAGE
(1Y)



LINE

NOTES:

1. INTERCHANGE ANY TWO LINE LEADS TO REVERSE ROTATION.
2. OPTIONAL THERMOSTATS ARE PROVIDED WHEN SPECIFIED.
3. ACTUAL NUMBER OF INTERNAL PARALLEL CIRCUITS MAY BE A MULTIPLE OF THOSE SHOWN ABOVE.
4. LEAD COLORS ARE OPTIONAL. LEADS MUST ALWAYS BE NUMBERED AS SHOWN.

REV. DESC: REVISE TO SHOW OPTIONAL COLORS			
REV. LTR: E	BY: JLP	REVISED: 01/19/99 10:15	TDR: 0171435
S00000		FILE: AAA00005140	MDL: -
		MTL: -	

BALDOR ELECTRIC Co.

3PH, DV, 9 LEADS

CD0005