

BALDOR • RELIANCE

Customer information packet

EMVM3555D

1.5KW, 3490RPM, 3PH, 60HZ, D90LD, 3526M, TEFC

Class - None

Division - Not Applicable

Specifications

Enclosure	TEFC
Frame	D90LD
Frame Material	Steel
Frequency	60.00 Hz
Haz Area Class and Group	None
Haz Area Division	Not Applicable
Motor Letter Type	Three Phase
Output @ Frequency	1.500 KW @ 60 HZ
Phase	3
Synchronous Speed @ Frequency	3600 RPM @ 60 HZ
Voltage @ Frequency	208.0 V @ 60 HZ 230.0 V @ 60 HZ 460.0 V @ 60 HZ
Agency Approvals	CSA EEV CE CSA UR
Ambient Temperature	40 °C
Auxillary Box	No Auxillary Box
Auxillary Box Lead Termination	None
Base Indicator	No Mounting
Bearing Grease Type	Polyrex EM (-20F +300F)
Blower	None
Current @ Voltage	5.300 A @ 208.0 V 5.000 A @ 230.0 V 2.500 A @ 460.0 V
Design Code	B
Drip Cover	No Drip Cover
Duty Rating	CONT
Efficiency @ 100% Load	85.5 %
Electrically Isolated Bearing	Not Electrically Isolated
Feedback Device	NO FEEDBACK

Part detail

Revision	L
Type	AC
Mech. spec.	35Q175
Base	
Status	PRD/A
Elec. spec.	35WGM774
Layout	35LYQ175
Eff. date	04-30-2024
CD Diagram	CD0005
Poles	02
Leads	9#18
Proprietary	False
Created date	05-08-2015

Frame Prefix	D
Front Face Code	Standard
Front Shaft Indicator	None
Heater Indicator	No Heater
High Voltage Full Load Amps	2.5 a
Insulation Class	F
Inverter Code	Inverter Ready
KVA Code	M
Lifting Lugs	No Lifting Lugs
Locked Bearing Indicator	Locked Bearing
Motor Lead Exit	Ko Box
Motor Lead Quantity/Wire Size	9 @ 18 AWG
Motor Lead Termination	Flying Leads
Motor Standards	IEC
Motor Type	3526M
Mounting Arrangement	B5
Number of Poles	2
Overall Length	12.99 IN
Power Factor	88
Product Family	General Purpose
Pulley End Bearing Type	Ball
Pulley Face Code	D-Flange
Pulley Shaft Indicator	Tapped & Key
Rodent Screen	None
RoHS Status	ROHS COMPLIANT
Service Factor	1.15
Shaft Diameter	0.945 IN
Shaft Extension Location	Pulley End
Shaft Ground Indicator	No Shaft Grounding
Shaft Rotation	Reversible
Shaft Slinger Indicator	No Slinger
Speed	3490 rpm
Speed Code	Single Speed
Starting Method	Direct on line

Thermal Device - Bearing	None
Thermal Device - Winding	None
Vibration Sensor Indicator	No Vibration Sensor
Winding Thermal 1	None
Winding Thermal 2	None

Nameplate

NP2672L									
CAT.NO.	EMVM3555D								
SPEC.	35Q175M774G1								
IEC FRAME	D90SD,LD	KW	1.5						
VOLTS	208-230/460								
AMP	5.3-5/2.5								
RPM	3490	ENCL	TEFC						
HZ	60	PH	3	CL	F				
SER.F.	1.15	DES	B	CODE	M				
NEMA-NOM-EFF	85.5	I.P.	54						
RATING	40C AMB-CONT								
CC	010A	USABLE AT 208V	N/A						
DE	6205	ODE	6203						
SER. #									

Parts list

Part number	Description	Quantity
SA300435	SA 35Q175M774G1	1.000 ea
RA287489	RA 35Q175M774G1	1.000 ea
NS2512A01	INSULATOR, CONDUIT BOX X	1.000 ea
35CB3007	35 CB CASTING W/.88 DIA. LEAD HOLE	1.000 ea
36GS1000SP	GASKET-CONDUIT BOX, .06 THICK #SV-330 LE	1.000 ea
51XB1016A07	10-16 X 7/16 HXWSSLD SERTYB	2.000 ea
11XW1032G06	10-32 X .38, TAPTITE II, HEX WSHR SLTD U	1.000 ea
35EP3122A00	MASTER ODE,203 BRG,.683SH,#26 DRN,GRSR,F	1.000 ea
HW4500A01	1641B(ALEMITE)400 UNIV, GREASE FITT	1.000 ea
HW5100A03	WAVY WASHER (W1543-017)	1.000 ea
35EP1518A01	MODEL 35 IEC FF165 MACH. 80 & D90 205 BR	1.000 ea
HW4500A01	1641B(ALEMITE)400 UNIV, GREASE FITT	1.000 ea
HW4600A30	GARLOCK 63X273 SINGLE LIP SEAL	1.000 ea
51XN1032A20	10-32 X 1 1/4 HX WS SL SR	2.000 ea
35FH4005A84SP	IEC FH W/GRSR, NO DIMPLES PRIMED	1.000 ea
51XW1032A06	10-32 X .38, TAPTITE II, HEX WSHR SLTD S	3.000 ea
35CB4521GX	CONDUIT BOX LID KIT **ORDER INDIV PARTS	1.000 ea
51XW0832A07	8-32 X .44, TAPTITE II, HEX WSHR SLTD SE	4.000 ea
HW2505A11	KEY, 8 X 7 MM 1.125" X	1.000 ea
MJ5001A27	32220KN GRAY SEALER *MIN BUY 4 QTS=1GAL	0.001 qt
85XU0407S04	4X1/4 U DRIVE PIN STAINLESS	2.000 ea
MJ1000A02	GREASE, POLYREX EM EXXON	0.050 lb
34FN3002B01	EXTERNAL FAN, PLASTIC, .637/.639 HUB W/	1.000 ea
MG1050Y01	CELEROL BALDOR GOLD *** NLA IN 5 GALLON	0.017 ga
HA3100A37	THRUBOLT 10-32 X 8.500	4.000 ea
LC0005E01	CONN.DIA./WARNING LABEL (LC0005/LB1119N)	1.000 ea
MN416A01	TAG-INSTAL-MAINT no wire (2500bx)4/22	1.000 ea
NP2672L	SS SUPER-E IEC UL CSA PREM CC	1.000 ea
PK3083	STYROFOAM PACKING CRADLE	1.000 ea
36PA1000	PKG GRP, PRINT PK1016A06	1.000 ea
PK3088	MICROFOAM, 8"X"8 PERF. SHEETS	1.000 ea

FE-0000001

ZRTG FE ASSEMBLY

1.000 ea

AC Induction Motor Performance Data

Record # 50636

Typical performance - not guaranteed values

Winding: 35WGM774-R016		Type: 3526M		Enclosure: TEFC	
Nameplate Data			460 V, 60 Hz: High Voltage Connection		
Rated Output (KW)	1.5	Full Load Torque	2.98 LB-FT		
Volts	208-230/460	Start Configuration	direct on line		
Full Load Amps	5.3-5/2.5	Breakdown Torque	14.2 LB-FT		
R.P.M.	3490	Pull-up Torque	6.33 LB-FT		
Hz	60 Phase	Locked-rotor Torque	11.2 LB-FT		
NEMA Design Code	B KVA Code	Starting Current	25.9 A		
Service Factor (S.F.)	1.15	No-load Current	0.912 A		
NEMA Nom. Eff.	85.5 Power Factor	Line-line Res. @ 25°C	6.9119 Ω		
Rating - Duty	40C AMB-CONT	Temp. Rise @ Rated Load	44°C		
S.F. Amps		Temp. Rise @ S.F. Load	52°C		
		Locked-rotor Power Factor	50		
		Rotor inertia	0.0719 LB-FT ²		

Load Characteristics 460 V, 60 Hz, 1.5 KW

% of Rated Load	25	50	75	100	125	150	S.F.
Power Factor	55	75	84	88	90	91	89
Efficiency	74.3	83.5	85.9	86.4	85.9	84.8	86.1
Speed	3571.7	3546.5	3520.2	3492.1	3460.7	3425.5	3473
Line amperes	1.1	1.47	1.93	2.44	3	3.61	2.78

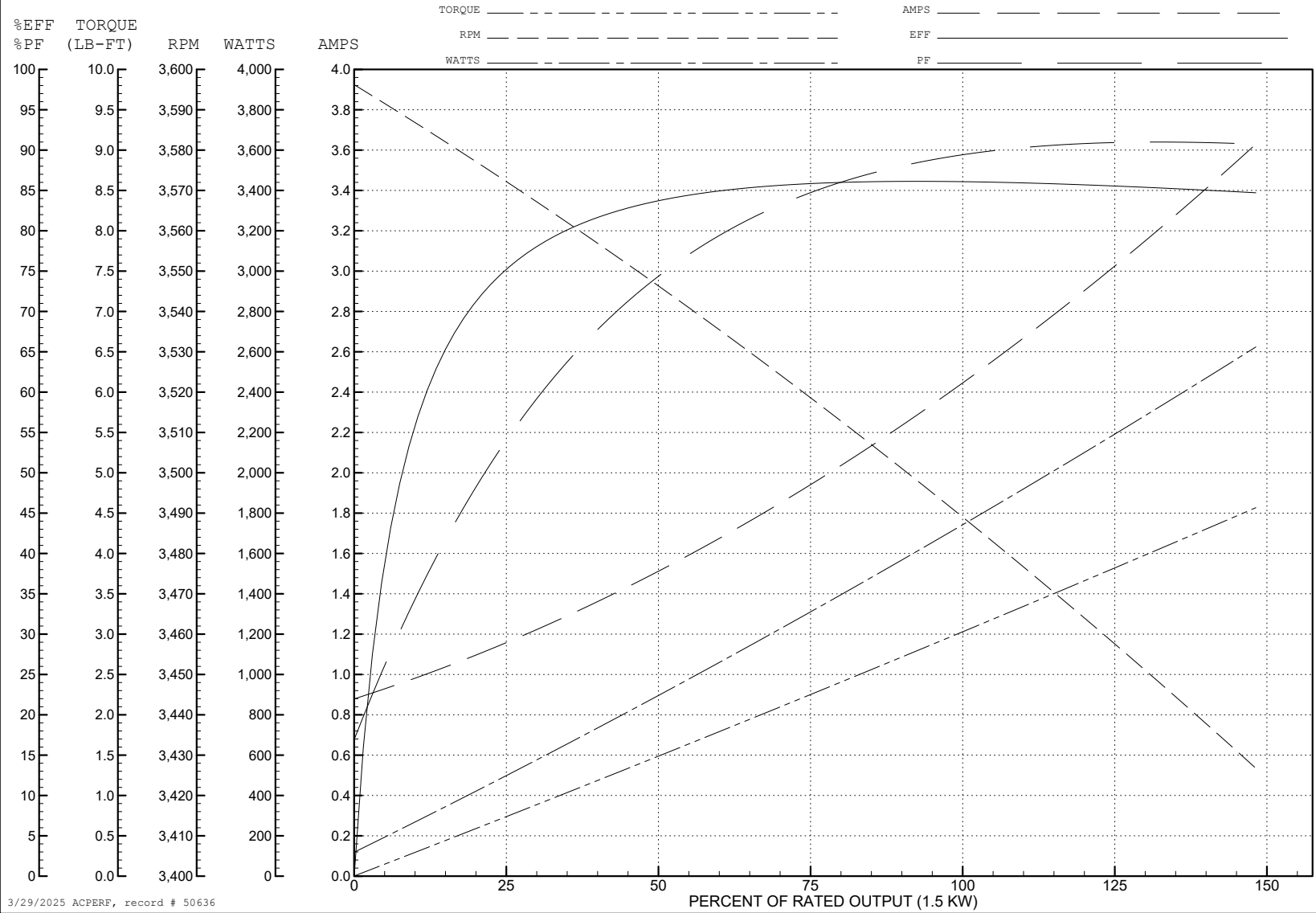
ABB Motors and Mechanical Inc.

WINDING # 35WGM774

Typical performance - not guaranteed values.

1.5 KW 3 PH 60 HZ 3490 RPM 460 V 3526M

TORQUES (LB-FT): PO=14.2 PU=6.33 LR=11.2 LRA=25.9



3/29/2025 ACPERF, record # 50636

AC Induction Motor Performance Data

Record # 50637

Typical performance - not guaranteed values

Winding: 35WGM774-R016		Type: 3526M		Enclosure: TEFC	
Nameplate Data			208 V, 60 Hz: Low Voltage Connection		
Rated Output (KW)	1.5	Full Load Torque	3 LB-FT		
Volts	208-230/460	Start Configuration	direct on line		
Full Load Amps	5.3-5/2.5	Breakdown Torque	11.5 LB-FT		
R.P.M.	3490	Pull-up Torque	5.05 LB-FT		
Hz	60 Phase	3	Locked-rotor Torque	8.93 LB-FT	
NEMA Design Code	B KVA Code	M	Starting Current	46.2 A	
Service Factor (S.F.)	1.15		No-load Current	1.56 A	
NEMA Nom. Eff.	85.5	Power Factor	88		
Rating - Duty	40C AMB-CONT		Temp. Rise @ Rated Load	45°C	
S.F. Amps			Temp. Rise @ S.F. Load	55°C	
			Locked-rotor Power Factor	49.3	
			Rotor inertia	0.0719 LB-FT ²	

Load Characteristics 208 V, 60 Hz, 1.5 KW

% of Rated Load	25	50	75	100	125	150	S.F.
Power Factor	63	82	88	91	92	92	92
Efficiency	76.1	85.2	86.2	86	85	83	85.4
Speed	3566	3535	3502	3466	3426	3379	3442
Line amperes	2.04	2.94	4.04	5.25	6.58	8.06	6.05

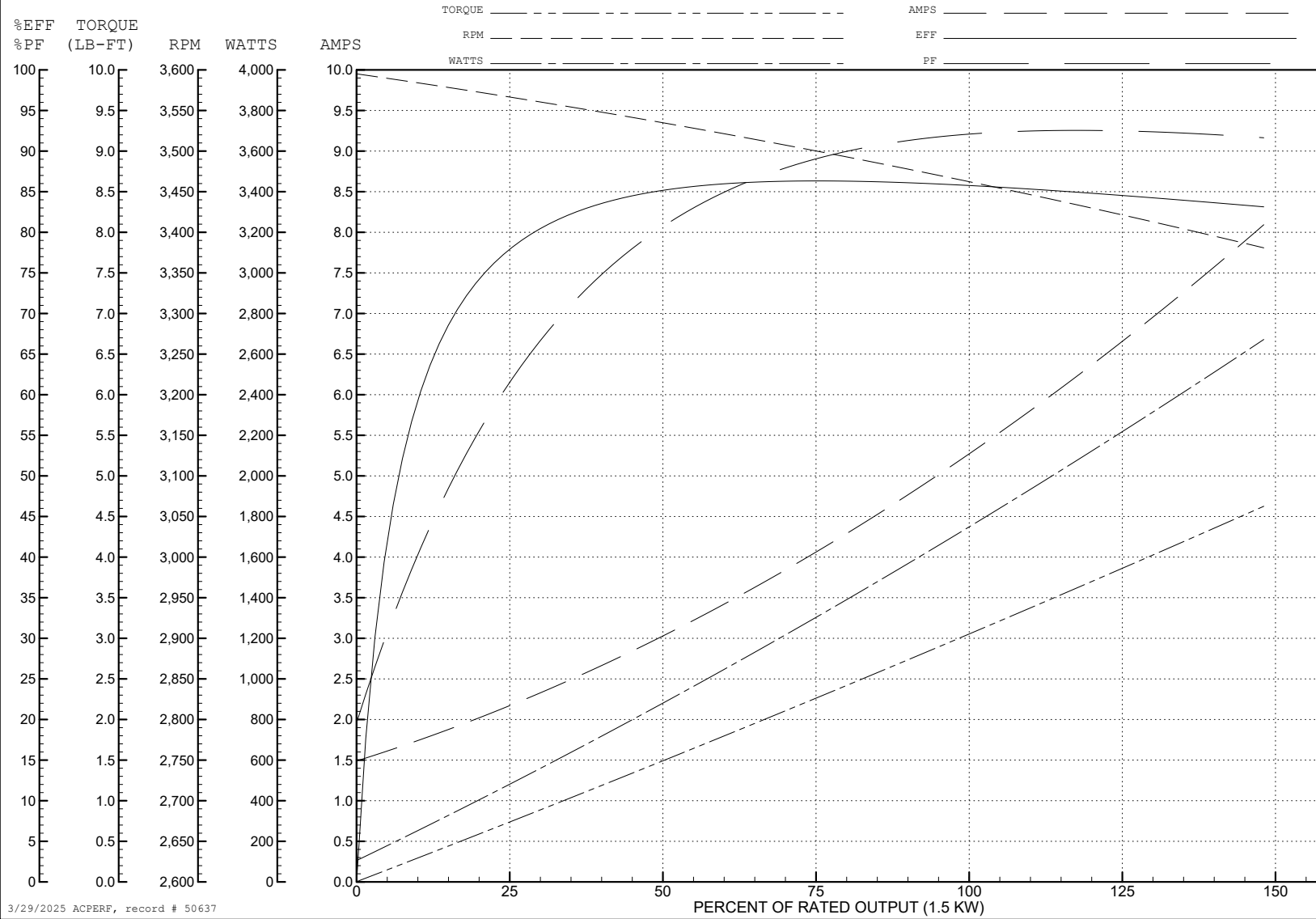
ABB Motors and Mechanical Inc.

WINDING # 35WGM774

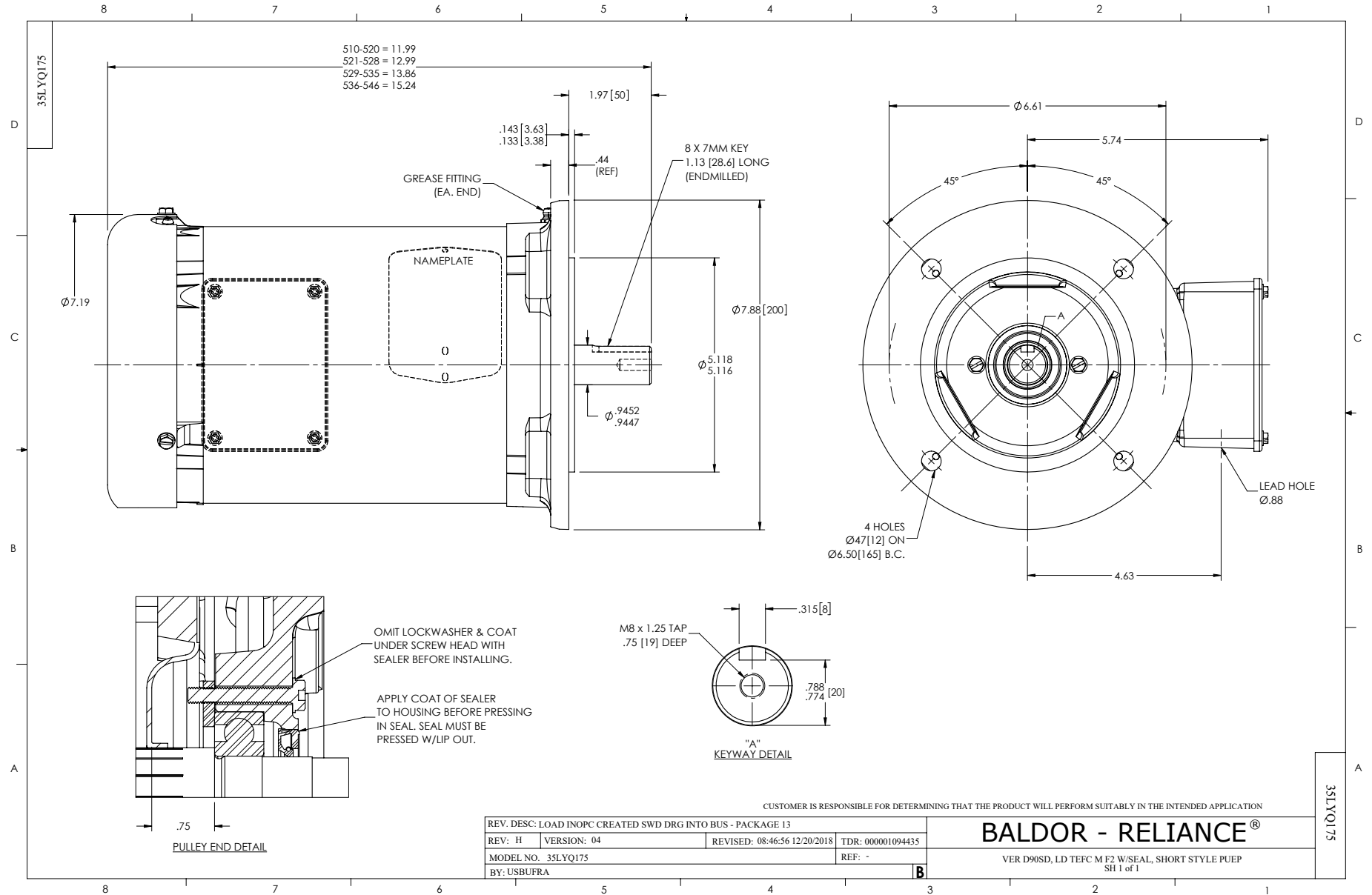
Typical performance - not guaranteed values.

1.5 KW 3 PH 60 HZ 3490 RPM 208 V 3526M

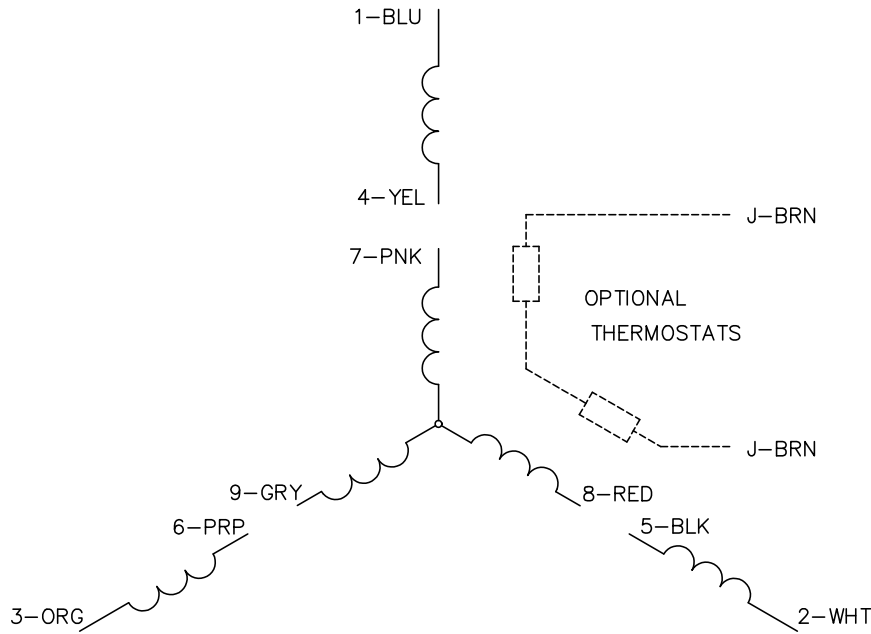
TORQUES (LB-FT): PO=11.5 PU=5.05 LR=8.93 LRA=46.2



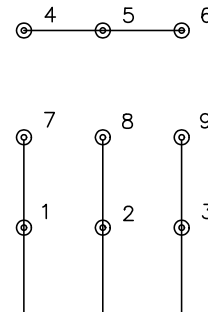
3/29/2025 ACPERF, record # 50637



CD0005

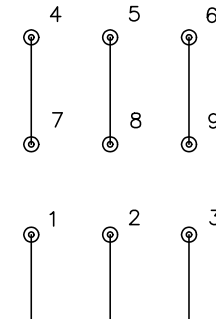


LOW VOLTAGE
(2Y)



LINE

HIGH VOLTAGE
(1Y)



LINE

NOTES:

1. INTERCHANGE ANY TWO LINE LEADS TO REVERSE ROTATION.
2. OPTIONAL THERMOSTATS ARE PROVIDED WHEN SPECIFIED.
3. ACTUAL NUMBER OF INTERNAL PARALLEL CIRCUITS MAY BE A MULTIPLE OF THOSE SHOWN ABOVE.
4. LEAD COLORS ARE OPTIONAL. LEADS MUST ALWAYS BE NUMBERED AS SHOWN.

CD0005

REV. DESC: REVISE TO SHOW OPTIONAL COLORS			
REV. LTR: E	BY: JLP	REVISED: 01/19/99 10:15	TDR: 0171435
S00000		FILE: AAA00005140	MDL: -
		MTL: -	

BALDOR ELECTRIC Co.

3PH, DV, 9 LEADS