

BALDOR • RELIANCE

Customer information packet

EMVM3559C

2.2KW, 3450RPM, 3PH, 60HZ, D90LC, 3532M, TEFC

Class - None

Division - Not Applicable

Specifications

| | |
|--------------------------------|---|
| Enclosure | TEFC |
| Frame | D90LC |
| Frame Material | Steel |
| Frequency | 60.00 Hz |
| Haz Area Class and Group | None |
| Haz Area Division | Not Applicable |
| Motor Letter Type | Three Phase |
| Output @ Frequency | 2.200 KW @ 60 HZ |
| Phase | 3 |
| Synchronous Speed @ Frequency | 3600 RPM @ 60 HZ |
| Voltage @ Frequency | 208.0 V @ 60 HZ 230.0 V @ 60 HZ 460.0 V @ 60 HZ |
| Agency Approvals | CSA EEV CSA UR |
| Ambient Temperature | 40 °C |
| Auxillary Box | No Auxillary Box |
| Auxillary Box Lead Termination | None |
| Base Indicator | No Mounting |
| Bearing Grease Type | Polyrex EM (-20F +300F) |
| Blower | None |
| Current @ Voltage | 3.600 A @ 460.0 V 7.200 A @ 230.0 V 7.900 A @ 208.0 V |
| Design Code | B |
| Drip Cover | No Drip Cover |
| Duty Rating | CONT |
| Efficiency @ 100% Load | 86.5 % |
| Electrically Isolated Bearing | Not Electrically Isolated |
| Feedback Device | NO FEEDBACK |
| Frame Prefix | D |

Part detail

| | |
|--------------|------------|
| Revision | M |
| Type | AC |
| Mech. spec. | 35S714 |
| Base | |
| Status | PRD/A |
| Elec. spec. | 35WGQ060 |
| Layout | 35LYS714 |
| Eff. date | 04-30-2024 |
| CD Diagram | CD0005 |
| Poles | 02 |
| Leads | 9#18 |
| Proprietary | False |
| Created date | 05-06-2015 |

| | |
|-------------------------------|--------------------|
| Front Face Code | Standard |
| Front Shaft Indicator | None |
| Heater Indicator | No Heater |
| High Voltage Full Load Amps | 3.6 a |
| Insulation Class | F |
| Inverter Code | Inverter Ready |
| KVA Code | L |
| Lifting Lugs | No Lifting Lugs |
| Locked Bearing Indicator | Locked Bearing |
| Motor Lead Exit | Ko Box |
| Motor Lead Quantity/Wire Size | 9 @ 18 AWG |
| Motor Lead Termination | Flying Leads |
| Motor Standards | IEC |
| Motor Type | 3532M |
| Mounting Arrangement | B14 |
| Number of Poles | 2 |
| Overall Length | 14.63 IN |
| Power Factor | 92 |
| Product Family | General Purpose |
| Pulley End Bearing Type | Ball |
| Pulley Face Code | C-Face |
| Pulley Shaft Indicator | Tapped & Key |
| Rodent Screen | None |
| RoHS Status | ROHS COMPLIANT |
| Service Factor | 1.15 |
| Shaft Diameter | 0.945 IN |
| Shaft Extension Location | Pulley End |
| Shaft Ground Indicator | No Shaft Grounding |
| Shaft Rotation | Reversible |
| Shaft Slinger Indicator | No Slinger |
| Speed | 3450 rpm |
| Speed Code | Single Speed |
| Starting Method | Direct on line |
| Thermal Device - Bearing | None |

| | |
|-----------------------------------|---------------------|
| Thermal Device - Winding | None |
| Vibration Sensor Indicator | No Vibration Sensor |
| Winding Thermal 1 | None |
| Winding Thermal 2 | None |

Nameplate

| NP3386L | | | | | |
|---------------------|--------------|-----------------------|------|-------------|---|
| CAT.NO. | EMVM3559C | | | | |
| SPEC. | 35S714Q060G2 | | | | |
| IEC FRAME | D90SC,LC | KW | 2.2 | | |
| VOLTS | 230/460 | | | | |
| AMP | 7.2/3.6 | | | | |
| RPM | 3450 | ENCL | TEFC | | |
| HZ | 60 | PH | 3 | CL | F |
| SER.F. | 1.15 | DES | B | CODE | L |
| NEMA-NOM-EFF | 86.5 | I.P. | 44 | | |
| RATING | 40C AMB-CONT | | | | |
| CC | 010A | USABLE AT 208V | | N/A | |
| DE | 6206 | ODE | 6203 | | |
| SER. # | | | | | |

Parts list

| Part number | Description | Quantity |
|---------------|--|----------|
| SA300369 | SA 35S714Q060G2 | 1.000 ea |
| RA287420 | RA 35S714Q060G2 | 1.000 ea |
| 34FN3002B01 | EXTERNAL FAN, PLASTIC, .637/.639 HUB W/ | 1.000 ea |
| NS2512A01 | INSULATOR, CONDUIT BOX X | 1.000 ea |
| 35CB3007 | 35 CB CASTING W/.88 DIA. LEAD HOLE | 1.000 ea |
| 36GS1000SP | GASKET-CONDUIT BOX, .06 THICK #SV-330 LE | 1.000 ea |
| 51XB1016A07 | 10-16 X 7/16 HXWSSLD SERTYB | 2.000 ea |
| 11XW1032G06 | 10-32 X .38, TAPTITE II, HEX WSHR SLTD U | 1.000 ea |
| 35EP3122K00 | MASTER ODE,203 BRG,.683SH,#26 DRN,FH MTG | 1.000 ea |
| HW5100A03 | WAVY WASHER (W1543-017) | 1.000 ea |
| 35EP1512A07 | SPL PU ENDPLATE IEC D90C FOR SEAL | 1.000 ea |
| HW4600H12 | SEAL 1.156 X 1.874 X 0.250 SINGLE LIP DB | 1.000 ea |
| 51XN1032A24 | 10-32 X 1 1/2 HX WS SL SR | 2.000 ea |
| 35FH4005A32SP | IEC FH NO GRSR W/3 HOLES - PRIMED | 1.000 ea |
| 51XW1032A06 | 10-32 X .38, TAPTITE II, HEX WSHR SLTD S | 3.000 ea |
| 35CB4521GX | CONDUIT BOX LID KIT **ORDER INDIV PARTS | 1.000 ea |
| 51XW0832A07 | 8-32 X .44, TAPTITE II, HEX WSHR SLTD SE | 4.000 ea |
| MJ5001A27 | 32220KN GRAY SEALER *MIN BUY 4 QTS=1GAL | 0.001 qt |
| 85XU0407S04 | 4X1/4 U DRIVE PIN STAINLESS | 2.000 ea |
| MJ1000A02 | GREASE, POLYREX EM EXXON | 0.050 lb |
| MG1050Y01 | CELEROL BALDOR GOLD *** NLA IN 5 GALLON | 0.017 ga |
| HW2505A14 | KEY, 8 X 7 MM 1.50 INCHES | 1.000 ea |
| HA7000A12 | KEY RETAINER 0.945-1.00 DIA SHAFTS | 1.000 ea |
| HA3100A71 | THRUBOLT 10-32 X 9.500 | 4.000 ea |
| LC0005E01 | CONN.DIA./WARNING LABEL (LC0005/LB1119N) | 1.000 ea |
| MN416A01 | TAG-INSTAL-MAINT no wire (2500bx)4/22 | 1.000 ea |
| NP3386L | ALUM SUPER-E IEC UL CSA-EEV CC | 1.000 ea |
| 36PA1000 | PKG GRP, PRINT PK1016A06 | 1.000 ea |
| PK3083 | STYROFOAM PACKING CRADLE | 1.000 ea |
| PK3088 | MICROFOAM, 8"X"8 PERF. SHEETS | 1.000 ea |
| FE-0000001 | ZRTG FE ASSEMBLY | 1.000 ea |

AC Induction Motor Performance Data

Record # 61529

Typical performance - not guaranteed values

| Winding: 35WGQ060-R022 | | Type: 3532M | | Enclosure: TEFC | |
|-------------------------------|--------------------------|----------------------------|--|------------------------|--|
| Nameplate Data | | | 460 V, 60 Hz: High Voltage Connection | | |
| Rated Output (KW) | 2.2 | Full Load Torque | 4.61 LB-FT | | |
| Volts | 230/460 | Start Configuration | direct on line | | |
| Full Load Amps | 7.2/3.6 | Breakdown Torque | 19.9 LB-FT | | |
| R.P.M. | 3450 | Pull-up Torque | 11.9 LB-FT | | |
| Hz | 60 Phase | 3 | Locked-rotor Torque | 18.8 LB-FT | |
| NEMA Design Code | B KVA Code | L | Starting Current | 33.1 A | |
| Service Factor (S.F.) | | 1.15 | No-load Current | 1.17 A | |
| NEMA Nom. Eff. | 86.5 Power Factor | 92 | Line-line Res. @ 25°C | 4.7916 Ω | |
| Rating - Duty | | 40C AMB-CONT | Temp. Rise @ Rated Load | 57°C | |
| S.F. Amps | | | Temp. Rise @ S.F. Load | 72°C | |

Load Characteristics 460 V, 60 Hz, 2.2 KW

| % of Rated Load | 25 | 50 | 75 | 100 | 125 | 150 | S.F. |
|------------------------|-----------|-----------|-----------|------------|------------|------------|-------------|
| Power Factor | 62 | 81 | 88 | 92 | 93 | 94 | 93 |
| Efficiency | 83.7 | 87.9 | 88.2 | 87.2 | 85.6 | 83.5 | 86.2 |
| Speed | 3562.2 | 3530.9 | 3497.8 | 3462.5 | 3420.8 | 3375.4 | 3437 |
| Line amperes | 1.5 | 2.08 | 2.79 | 3.57 | 4.46 | 5.44 | 4.1 |

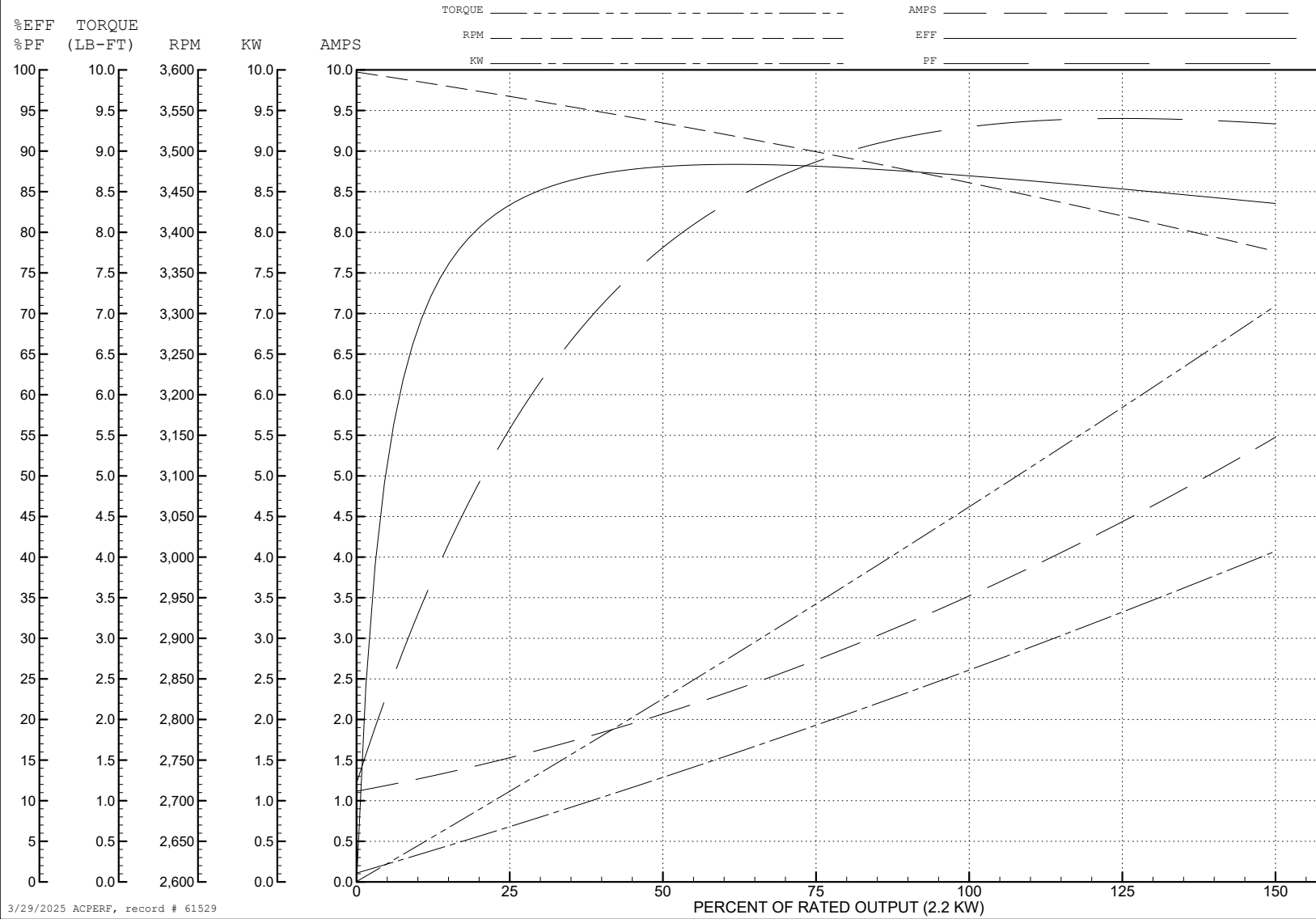
ABB Motors and Mechanical Inc.

WINDING # 35WGQ060

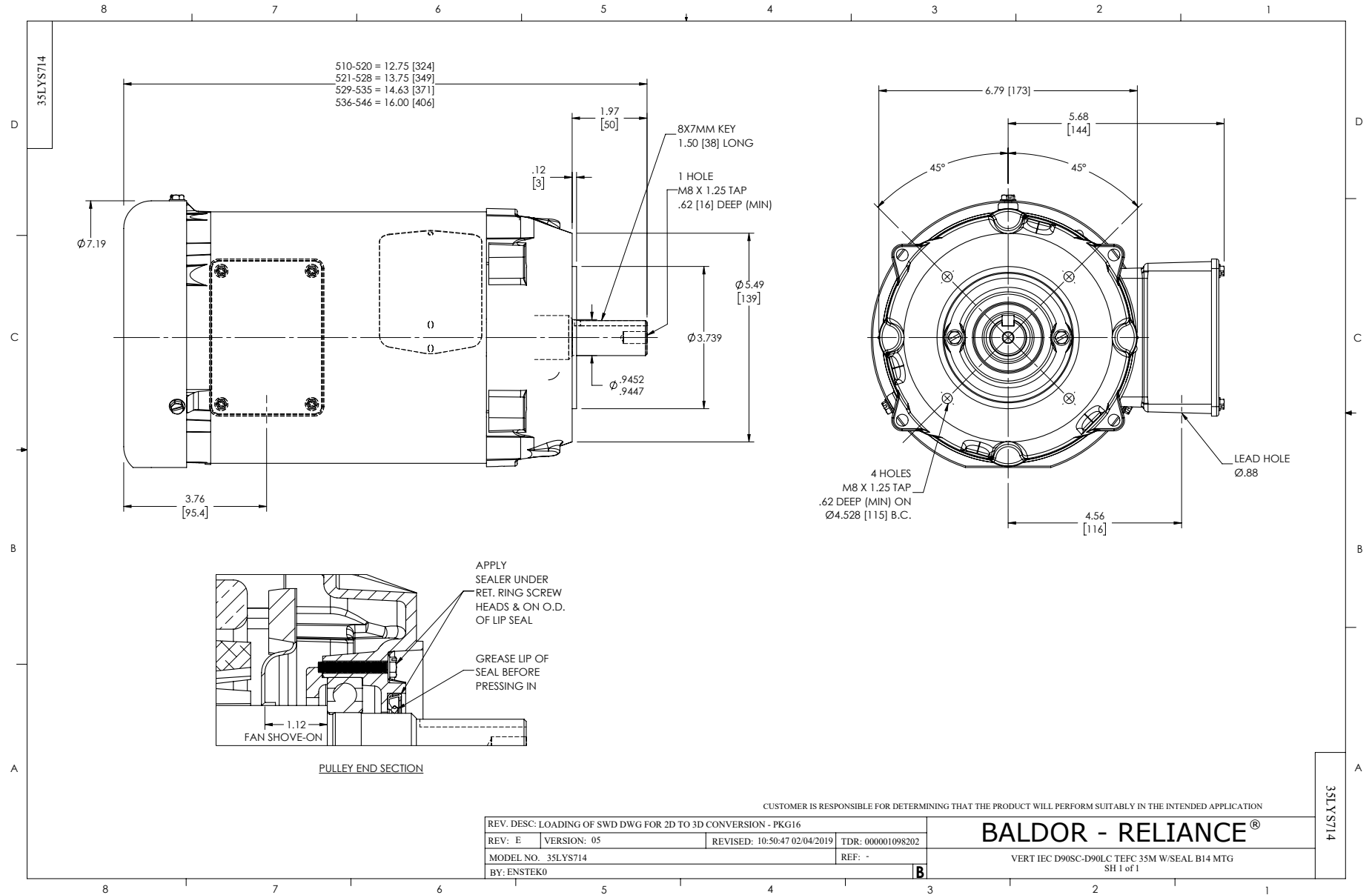
Typical performance - not guaranteed values.

2.2 KW 3 PH 60 HZ 3450 RPM 460 V 3532M

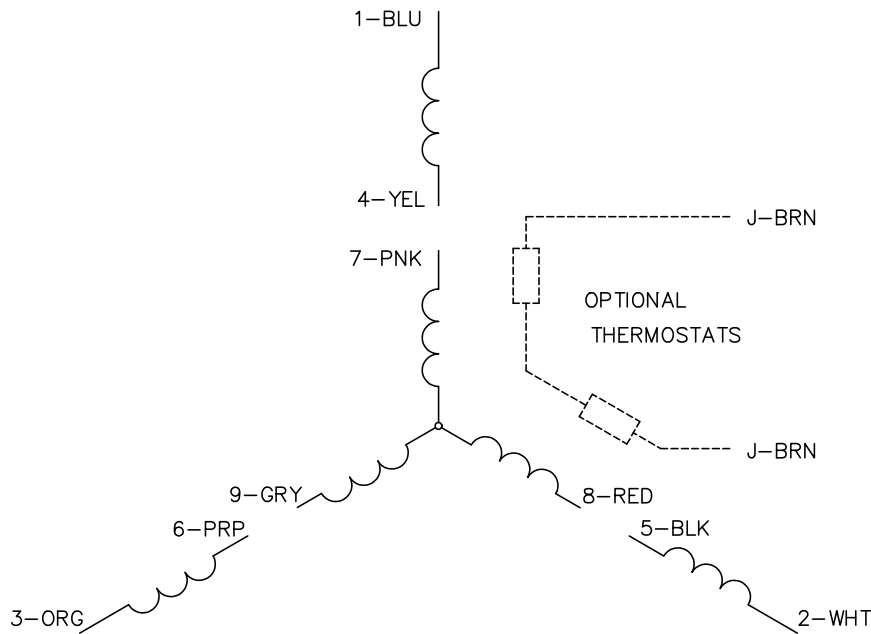
TORQUES (LB-FT): PO=19.9 PU=11.9 LR=18.8 LRA=33.1



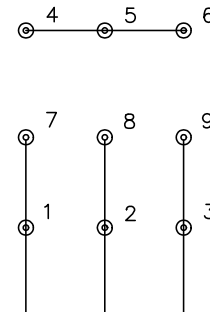
3/29/2025 ACPERF, record # 61529



CD0005

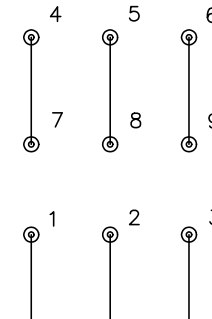


LOW VOLTAGE
(2Y)



LINE

HIGH VOLTAGE
(1Y)



LINE

NOTES:

1. INTERCHANGE ANY TWO LINE LEADS TO REVERSE ROTATION.
2. OPTIONAL THERMOSTATS ARE PROVIDED WHEN SPECIFIED.
3. ACTUAL NUMBER OF INTERNAL PARALLEL CIRCUITS MAY BE A MULTIPLE OF THOSE SHOWN ABOVE.
4. LEAD COLORS ARE OPTIONAL. LEADS MUST ALWAYS BE NUMBERED AS SHOWN.

| | | | |
|---|---------|-------------------------|--------------|
| REV. DESC: REVISE TO SHOW OPTIONAL COLORS | | | |
| REV. LTR: E | BY: JLP | REVISED: 01/19/99 10:15 | TDR: 0171435 |
| S00000 | | FILE: AAA00005140 | MDL: - |
| | | MTL: - | |

BALDOR ELECTRIC Co.

3PH, DV, 9 LEADS

CD0005