

**BALDOR • RELIANCE**

---

**Customer information packet**  
**36H946Y698**

5HP, 1740RPM, 3PH, 60HZ, 184T, 3625M, OPSB, F2

**Specifications**

Frequency	60.00 Hz
Output @ Frequency	5.000 HP @ 60 HZ
Phase	3
Synchronous Speed @ Frequency	1800 RPM @ 60 HZ
Voltage @ Frequency	200.0 V @ 60 HZ
Ambient Temperature	40 °C
Current @ Voltage	16.000 A @ 208.0 V 16.100 A @ 200.0 V
Design Code	B
Duty Rating	CONT
Efficiency @ 100% Load	82.5 %
Insulation Class	F
KVA Code	H
Motor Lead Quantity/Wire Size	3 @ 14 AWG
Motor Type	3625M
Mounting Arrangement	F2
Number of Poles	4
Power Factor	80
Service Factor	1.15
Speed	1740 rpm

**Part detail**

Revision	M
Type	AC
Mech. spec.	36H946
Base	
Status	NLA/A
Elec. spec.	36WGY698
Layout	36LYH946
Eff. date	03-20-2005
CD Diagram	CD0006
Poles	04
Leads	3#14
Proprietary	False
Created date	01-01-0001

**Nameplate**

<b>NP1256</b>										
<b>CAT.NO.</b>										
<b>SPEC.</b>	36H946Y698									
<b>HP</b>	5									
<b>VOLTS</b>	200									
<b>AMP</b>	16.1									
<b>RPM</b>	1740									
<b>FRAME</b>	184T	<b>HZ</b>	60	<b>PH</b>	3					
<b>SER.F.</b>	1.15	<b>CODE</b>	H	<b>DES</b>	B	<b>CLASS</b>	F			
<b>NEMA-NOM-EFF</b>	82.5	<b>PF</b>	80							
<b>RATING</b>	40C AMB-CONT									
<b>CC</b>									<b>USABLE AT 208V</b>	N/A
<b>DE</b>	6206	<b>ODE</b>	6205							
<b>ENCL</b>	OPSB	<b>SN</b>								

## Parts list

Part number	Description	Quantity
MG1000G27	MED CHARCOAL METALLIC GREY	0.022 ga
SA036999	SA 36H946Y698	1.000 ea
RA033024	RA 36H946Y698	1.000 ea
HW3200A01	3/8-16X3/4 EYEBOLT WELDED F/S	1.000 ea
36CB3005A03	36 CB .75 NPT @ 6	1.000 ea
51XB1016A08	10-16X 1/2HXWSSLD SERTYB	2.000 ea
11XW1032G06	10-32 X .38, TAPTITE II, HEX WSHR SLTD U	1.000 ea
36EP3204B00	FR ENDPLATE, ASSEMBLY FOR ROUTING	1.000 ea
HW4500A01	1641B(ALEMITE)400 UNIV, GREASE FITT	1.000 ea
HW5100A05	WVY WSHR F/205 & 304 BRGS	1.000 ea
36EP3205D00	PU ENDPLATE, ASSEMBLY FOR ROUTING	1.000 ea
HW4500A01	1641B(ALEMITE)400 UNIV, GREASE FITT	1.000 ea
XY2520A12	1/4-20 HEX NUT, DIRECTIONAL SERRATIONS	4.000 ea
37CB4500SP	CONDUIT BOX LID, STAMPED X	1.000 ea
51XW0832A07	8-32 X .44, TAPTITE II, HEX WSHR SLTD SE	4.000 ea
HW2501E16	KEY, 1/4 SQ X 1.750	1.000 ea
HA7000A02	KEY RETAINER RING, 1 1/8 DIA, 1 3/8 DIA	1.000 ea
10XF0440S02	04-40 X 1/8 TYPE F HEX HD STAINLESS STIC	2.000 ea
LB1115N	LABEL,LIFTING DEVICE (ON ROLLS)	1.000 ea
MJ1000A02	GREASE, POLYREX EM EXXON	0.050 lb
HA3101A25	THRUBOLT 1/4-20 X 11.000 OHIO ROD	4.000 ea
36AD2004A01	BAFFLE PLATE,MOD 36-SLTD BAND MTRS DELTA	2.000 ea
LB1624	WARNING LABEL	1.000 ea
LB1172A01	CUSTOM MTR CARTON LABEL LASER PRINTER	1.000 ea
LC0006	CONNECTION LABEL	1.000 ea
NP1256L	ALUM UL CSA CC	1.000 ea
36PA1001	PKG GRP, PRINT PK1017A06	1.000 ea
MN416A01	TAG-INSTAL-MAINT no wire (2500bx)4/22	1.000 ea
LB1417	LABEL CARTON 6X4 PERFORATED BLANK ROLLS	1.000 ea

**AC Induction Motor Performance Data**

Record # 11445

Typical performance - not guaranteed values

<b>Winding: 36WGY698-R001</b>		<b>Type: 3625M</b>		<b>Enclosure: OPSB</b>	
<b>Nameplate Data</b>			<b>200 V, 60 Hz: Single Voltage Motor</b>		
<b>Rated Output (HP)</b>	5	<b>Full Load Torque</b>	15 LB-FT		
<b>Volts</b>	200	<b>Start Configuration</b>	direct on line		
<b>Full Load Amps</b>	16.1	<b>Breakdown Torque</b>	39.9 LB-FT		
<b>R.P.M.</b>	1740	<b>Pull-up Torque</b>	23.5 LB-FT		
<b>Hz</b>	60	<b>Locked-rotor Torque</b>	27.6 LB-FT		
<b>NEMA Design Code</b>	B	<b>Starting Current</b>	95.2 A		
<b>Service Factor (S.F.)</b>	1.15	<b>No-load Current</b>	7.6 A		
<b>NEMA Nom. Eff.</b>	82.5	<b>Line-line Res. @ 25°C</b>	0.717 Ω		
<b>Rating - Duty</b>	40C	<b>Temp. Rise @ Rated Load</b>	66°C		
<b>S.F. Amps</b>	AMB-CONT	<b>Temp. Rise @ S.F. Load</b>	84°C		
		<b>Locked-rotor Power Factor</b>	49		
		<b>Rotor inertia</b>	0.234 LB-FT <sup>2</sup>		

**Load Characteristics 200 V, 60 Hz, 5 HP**

<b>% of Rated Load</b>	<b>25</b>	<b>50</b>	<b>75</b>	<b>100</b>	<b>125</b>	<b>150</b>	<b>S.F.</b>
<b>Power Factor</b>	41	63	73	80	83	84	82
<b>Efficiency</b>	76.8	83.7	84.2	83.2	80.9	77.8	81.8
<b>Speed</b>	1784	1770	1755	1738	1718	1691	1726
<b>Line amperes</b>	8.6	10.3	13	16.1	20	24.5	18.4

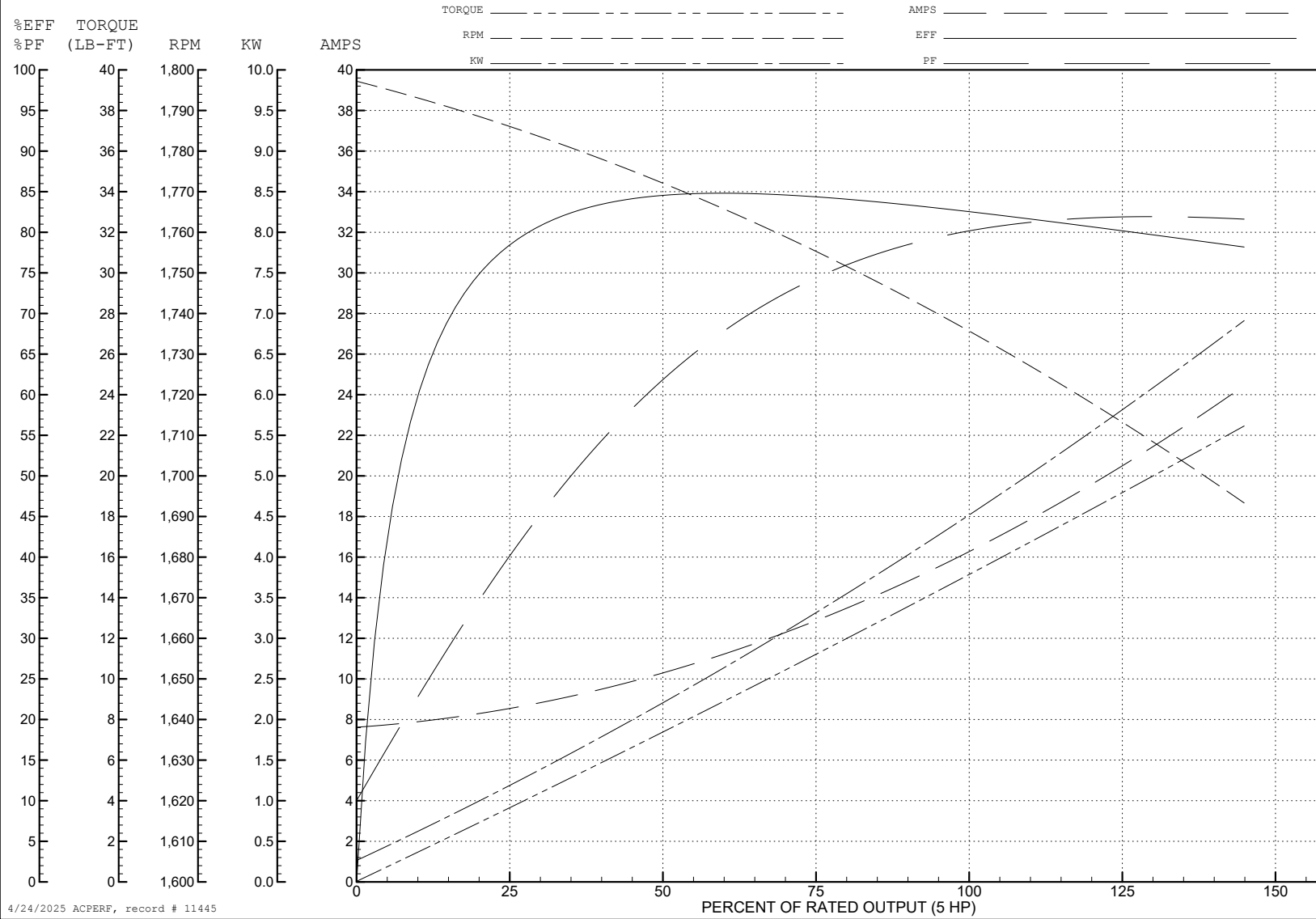
ABB Motors and Mechanical Inc.

WINDING # 36WGY698

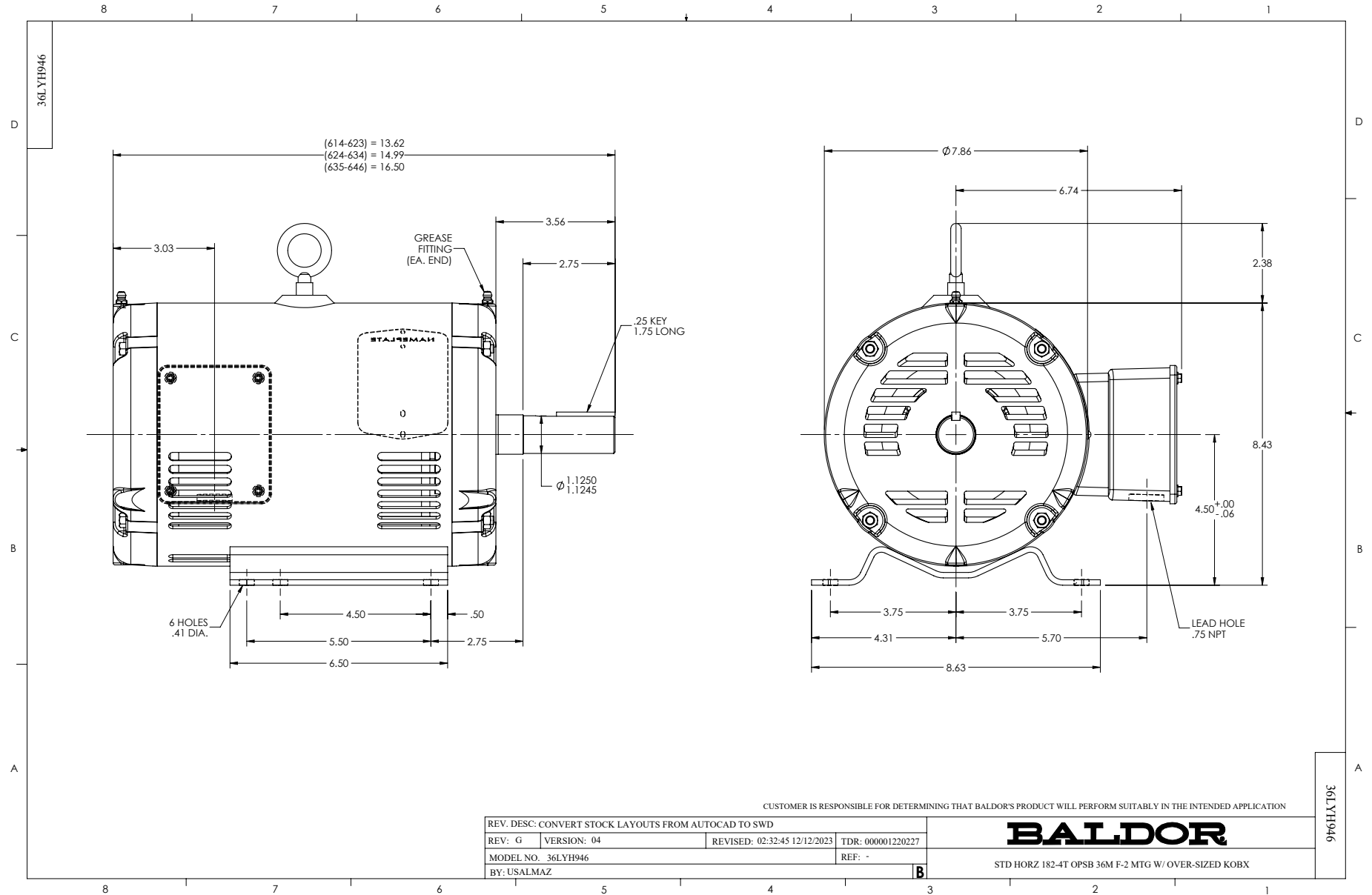
5 HP 3 PH 60 HZ 1740 RPM 200 V 3625M

Typical performance - not guaranteed values.

TORQUES (LB-FT): PO=39.9 PU=23.5 LR=27.6 LRA=95.2



4/24/2025 ACPERF, record # 11445



CD0006



NOTES:

1. THREE LEAD MOTOR MAY BE EITHER WYE CONNECTED OR DELTA CONNECTED.
2. INTERCHANGE ANY TWO LINE LEADS TO REVERSE ROTATION.
3. OPTIONAL THERMOSTATS ARE PROVIDED WHEN SPECIFIED.
4. ACTUAL NUMBER OF INTERNAL PARALLEL CIRCUITS MAY VARY.
5. LEAD COLORS ARE OPTIONAL. LEADS MUST BE NUMBERED AS SHOWN.

CD0006

REV. DESC: ADD CLASS CONN00000007		
REV. LTR: E	VERSION: 01	TDR: 000001099922
FILE: \AAA\00005\141	REVISED: 10:24:49 02/19/2019	BY: ENBRIRO
MTL: -	© □	

**BALDOR - RELIANCE®**

3PH, SV, 3 LEADS, WYE OR DELTA CONNECTED

SH 1 of 1