



---

# Customer information packet

## GSL3509M

1.5HP, 1735RPM, 1PH, 60HZ, 56Z, 3523LC, TEFC, F

Class - None

Division - Not Applicable

## Specifications

Enclosure	TEFC
Frame	56Z
Frame Material	Steel
Frequency	60.00 Hz
Haz Area Class and Group	None
Haz Area Division	Not Applicable
Motor Letter Type	Cap Start, Cap Run
Output @ Frequency	1.500 HP @ 60 HZ
Phase	1
Synchronous Speed @ Frequency	1800 RPM @ 60 HZ
Voltage @ Frequency	208.0 V @ 60 HZ 230.0 V @ 60 HZ
Agency Approvals	UR CSA
Ambient Temperature	40 °C
Auxillary Box	No Auxillary Box
Auxillary Box Lead Termination	None
Base Indicator	Rigid
Bearing Grease Type	Polyrex EM (-20F +300F)
Blower	None
Current @ Voltage	6.400 A @ 230.0 V 6.900 A @ 208.0 V
Design Code	L
Drip Cover	No Drip Cover
Duty Rating	CONT
Efficiency @ 100% Load	80.0 %
Electrically Isolated Bearing	Not Electrically Isolated
Feedback Device	NO FEEDBACK
Front Face Code	Standard
Front Shaft Indicator	None
Heater Indicator	No Heater
High Voltage Full Load Amps	6.4 a

## Part detail

Revision	P
Type	AC
Mech. spec.	35G630
Base	
Status	PRD/A
Elec. spec.	35WGP243
Layout	35LYG630
Eff. date	07-25-2024
CD Diagram	CD0370
Poles	04
Leads	2#16 A PH,3#18 B&J,2#18 P
Proprietary	False
Created date	03-29-2006

<b>Insulation Class</b>	F
<b>Inverter Code</b>	Not Inverter
<b>KVA Code</b>	J
<b>Lifting Lugs</b>	No Lifting Lugs
<b>Locked Bearing Indicator</b>	No Locked Bearing
<b>Motor Lead Exit</b>	Ko Box
<b>Motor Lead Quantity/Wire Size</b>	2 @ 16 AWG, A PH
<b>Motor Lead Termination</b>	Flying Leads
<b>Motor Standards</b>	NEMA
<b>Motor Type</b>	3523LC
<b>Mounting Arrangement</b>	F1
<b>Number of Poles</b>	4
<b>Overall Length</b>	12.29 IN
<b>Power Factor</b>	94
<b>Product Family</b>	General Purpose
<b>Pulley End Bearing Type</b>	Ball
<b>Pulley Face Code</b>	Standard
<b>Pulley Shaft Indicator</b>	Standard
<b>Rodent Screen</b>	None
<b>Service Factor</b>	1.15
<b>Shaft Extension Location</b>	Pulley End
<b>Shaft Ground Indicator</b>	No Shaft Grounding
<b>Shaft Rotation</b>	Reversible
<b>Shaft Slinger Indicator</b>	No Slinger
<b>Speed</b>	1750 rpm
<b>Speed Code</b>	Single Speed
<b>Starting Method</b>	Direct on line
<b>Thermal Device - Bearing</b>	None
<b>Thermal Device - Winding</b>	Do Not Use
<b>Vibration Sensor Indicator</b>	No Vibration Sensor
<b>Winding Thermal 1 Location</b>	KO

**Nameplate**

<b>NP1280L</b>									
<b>CAT.NO.</b>	GSL3509M								
<b>SPEC.</b>	35G630P243G1								
<b>HP</b>	1.5								
<b>VOLTS</b>	208-230								
<b>AMP</b>	6.9-6.4								
<b>RPM</b>	1750								
<b>FRAME</b>	56Z	<b>HZ</b>	60	<b>PH</b>	1				
<b>SER.F.</b>	1.15	<b>CODE</b>	J	<b>DES</b>	L	<b>CL</b>	F		
<b>NEMA-NOM-EFF</b>	80	<b>PF</b>	94						
<b>RATING</b>	40C AMB-CONT								
<b>CC</b>									
<b>DE</b>	6205	<b>ODE</b>	6203						
<b>ENCL</b>	TEFC	<b>SN</b>							

## Parts list

Part number	Description	Quantity
SA150868	SA 35G630P243G1	1.000 ea
RA139713	RA 35G630P243G1	1.000 ea
OC3025F11	CYL OIL CAP 25MFD/370V	1.000 ea
TPCRT52CA	THERMAL 1PH 1.00 MAN 105C	1.000 ea
EC1161C06SP	ELEC CAP, 161-193 MFD, 250V, 2.06D X 4.	1.000 ea
NS2512A01	INSULATOR, CONDUIT BOX X	1.000 ea
35CB3000A85	SPL CONDUIT BOX 35 W/1" MTO (FOR GASKET	1.000 ea
36GS1000SP	GASKET-CONDUIT BOX, .06 THICK #SV-330 LE	1.000 ea
51XB1016A07	10-16 X 7/16 HXWSSLD SERTYB	2.000 ea
11XW1032G06	10-32 X .38, TAPTITE II, HEX WSHR SLTD U	1.000 ea
HW3001B01	BRASS CUP WASHER, FOR #10 SCREW	1.000 ea
HA6015A11	EARED 1" THERMAL RETAINER (PLATED)	1.000 ea
RM1014A01SP	BUTYL RUB. THRM COV. (MENA)	1.000 ea
51XB1214A10	12-14 X 5/8HX WS SL SR TYBX	2.000 ea
35EP3122F14	F00 W/.125NPT FACE DRNS	1.000 ea
HA4054	SHORT T-DRAIN FITTING, .125" N.P.T.	2.000 ea
51XW0832A07	8-32 X .44, TAPTITE II, HEX WSHR SLTD SE	2.000 ea
35CB3801	CAPACITOR COVER, CAST	1.000 ea
HA7010	CAPACITOR RETENTION CLAMP	1.000 ea
34GS3002	GASKET, CAPACITOR BOX	1.000 ea
NS2501A02	INSULATOR, CAPACITOR BOX	1.000 ea
51XB1016A08	10-16X 1/2HXWSSLD SERTYB	2.000 ea
HW5100A03	WAVY WASHER (W1543-017)	1.000 ea
35EP3123D00	MASTER DE,205 BRG,.998 SH,#26 DRN,FH MTG	1.000 ea
XY1032A02	10-32 HEX NUT DIRECTIONAL SERRATION	4.000 ea
35FN2000A04	EXFN, ALUM, 5.75 OD, .938 ID	1.000 ea
80XN2520J06	1/4-20 X 3/8 SET SCREW, HEX SOC, CUP PT	1.000 ea
35FH4005A23	IEC FH NO GRSR W/SPL CUTOUT, W/ PRIMER	1.000 ea
51XW1032A06	10-32 X .38, TAPTITE II, HEX WSHR SLTD S	3.000 ea
WD4100A01	DP-875 HEYCO PLUG OR 62MP0875 MICRO PLAS	3.000 ea
35CB4514GX	CONDUIT BOX LID KIT	1.000 ea

51XW0832A07	8-32 X .44, TAPTITE II, HEX WSHR SLTD SE	4.000 ea
HW2501D08	KEY, 3/16 SQ X .875 AUTO	1.000 ea
HA7000A01	KEY RETAINER 7/8" DIA SHAFT	1.000 ea
WD1000A15	3-520132-2 AMP FLAG (4M/RL NON-CANC/NON-	4.000 ea
MJ1000A02	GREASE, POLYREX EM EXXON	0.050 lb
MG1025C02	WILKOFASST SG, 787.105, TAN	0.017 ga
LB1087	LABEL,MANUAL RESET (ROLL LABEL)	1.000 ea
85XU0407S04	4X1/4 U DRIVE PIN STAINLESS	2.000 ea
HA3100A18	THRUBOLT 10-32 X 9.250	4.000 ea
NS2500A02	INSULATOR, MAN THER PROT	1.000 ea
34GS5003	FOAM SLEEVE, ID = 2 1/16" X 3 3/8"	2.000 ea
SP5181A01	MODEL 35 LC TORQ STAT SWITCH LEAD ASSY	1.000 ea
LB1624	COMBINED WARNING LABEL, ISO/ANSI PICTOGR	1.000 ea
LC0370	1PH, SV, REV, THERMAL 7LD, 1/2 LINE ACCE	1.000 ea
NP1280L	ALUM FARM DUTY UL CC THERMAL	1.000 ea
35PA1066	PKG GRP, PRINT PK1008A06	1.000 ea
MN416A01	TAG-INSTAL-MAINT no wire (2500bx)4/22	1.000 ea
PE-0000001	ZRTG PE ASSEMBLY	1.000 ea
FE-0000001	ZRTG FE ASSEMBLY	1.000 ea

**AC Induction Motor Performance Data**

Record # 23711

Typical performance - not guaranteed values

<b>Winding: 35WGP243-R001</b>		<b>Type: 3523LC</b>		<b>Enclosure: TEFC</b>	
<b>Nameplate Data</b>			<b>230 V, 60 Hz: Single Voltage Motor</b>		
<b>Rated Output (HP)</b>	1.5	<b>Full Load Torque</b>	4.52 LB-FT		
<b>Volts</b>	230	<b>Start Configuration</b>	direct on line		
<b>Full Load Amps</b>	6.4	<b>Breakdown Torque</b>	12.7 LB-FT		
<b>R.P.M.</b>	1750	<b>Pull-up Torque</b>	10.9 LB-FT		
<b>Hz</b>	60	<b>Phase</b>	1	<b>Locked-rotor Torque</b>	12.8 LB-FT
<b>NEMA Design Code</b>	L	<b>KVA Code</b>	J	<b>Starting Current</b>	49.2 A
<b>Service Factor (S.F.)</b>	1.15	<b>No-load Current</b>	2.93 A		
<b>NEMA Nom. Eff.</b>	80	<b>Power Factor</b>	94	<b>Line-line Res. @ 25°C</b>	2.06 Ω A Ph 3.74 Ω B Ph
<b>Rating - Duty</b>	40C AMB-CONT		<b>Temp. Rise @ Rated Load</b>	73°C	
<b>S.F. Amps</b>			<b>Temp. Rise @ S.F. Load</b>	87°C	

**Load Characteristics 230 V, 60 Hz, 1.5 HP**

<b>% of Rated Load</b>	<b>25</b>	<b>50</b>	<b>75</b>	<b>100</b>	<b>125</b>	<b>150</b>	<b>S.F.</b>
<b>Power Factor</b>	69	85	91	94	96	96	95
<b>Efficiency</b>	50.9	70.3	77.6	80.7	81	79.4	80.9
<b>Speed</b>	1789	1777	1766	1751	1735	1715	1741
<b>Line amperes</b>	3.32	4.06	5.13	6.44	7.84	9.51	7.28

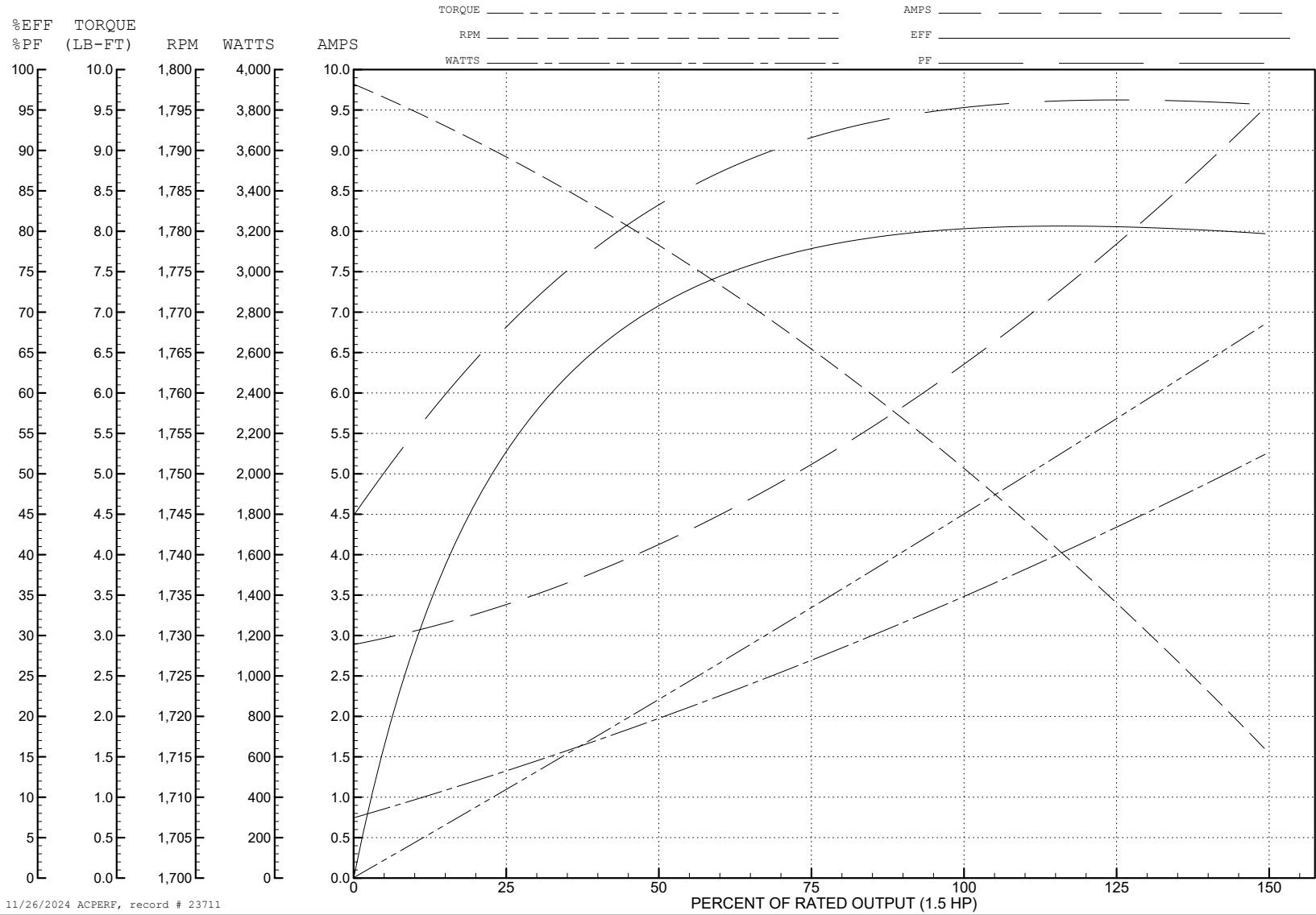
ABB Motors and Mechanical Inc.

WINDING # 35WGP243

Typical performance - not guaranteed values.

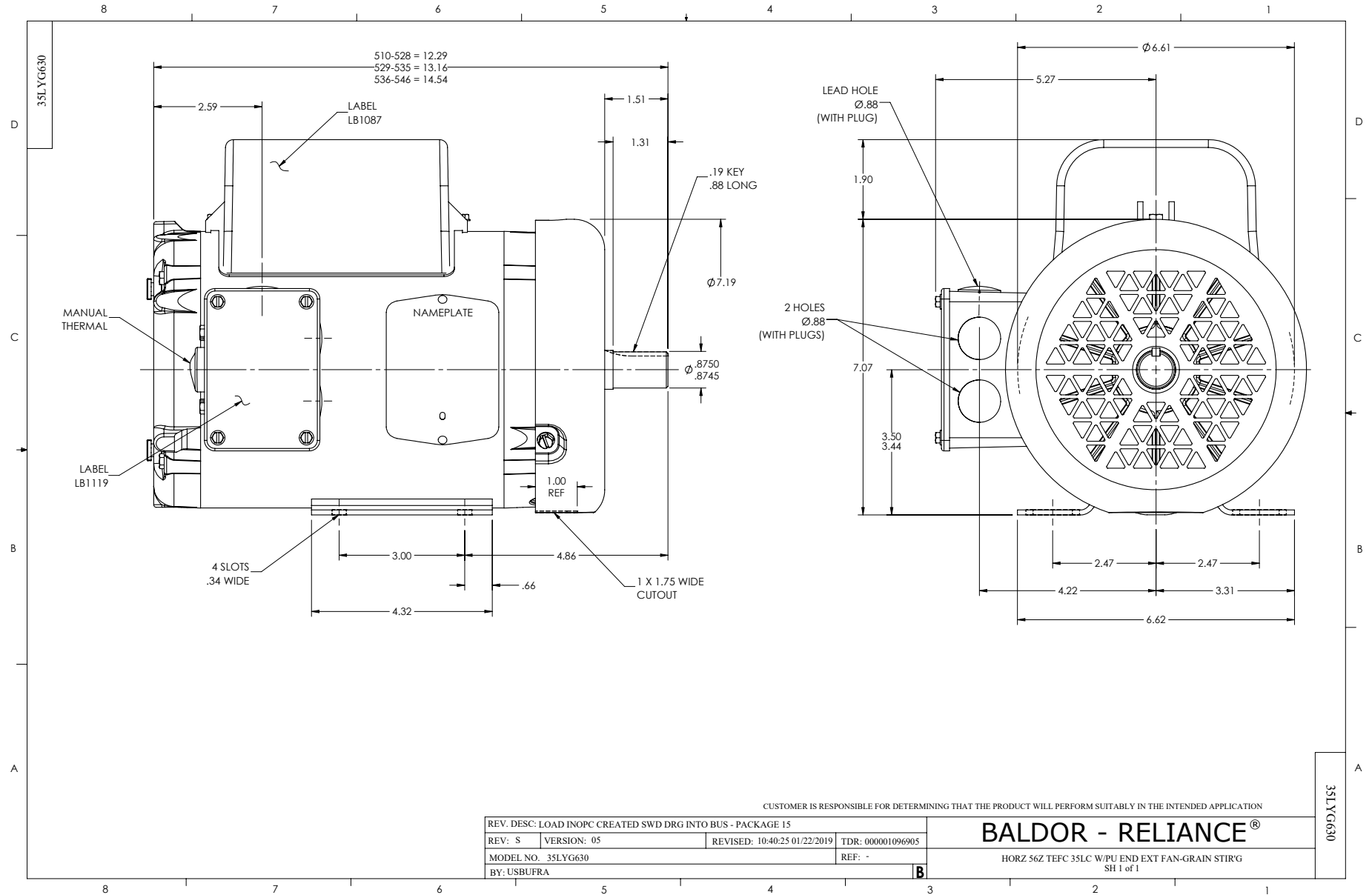
1.5 HP 1 PH 60 HZ 1750 RPM 230 V 3523LC

TORQUES (LB-FT): PO=12.7 PU=10.9 LR=12.8 LRA=49.2

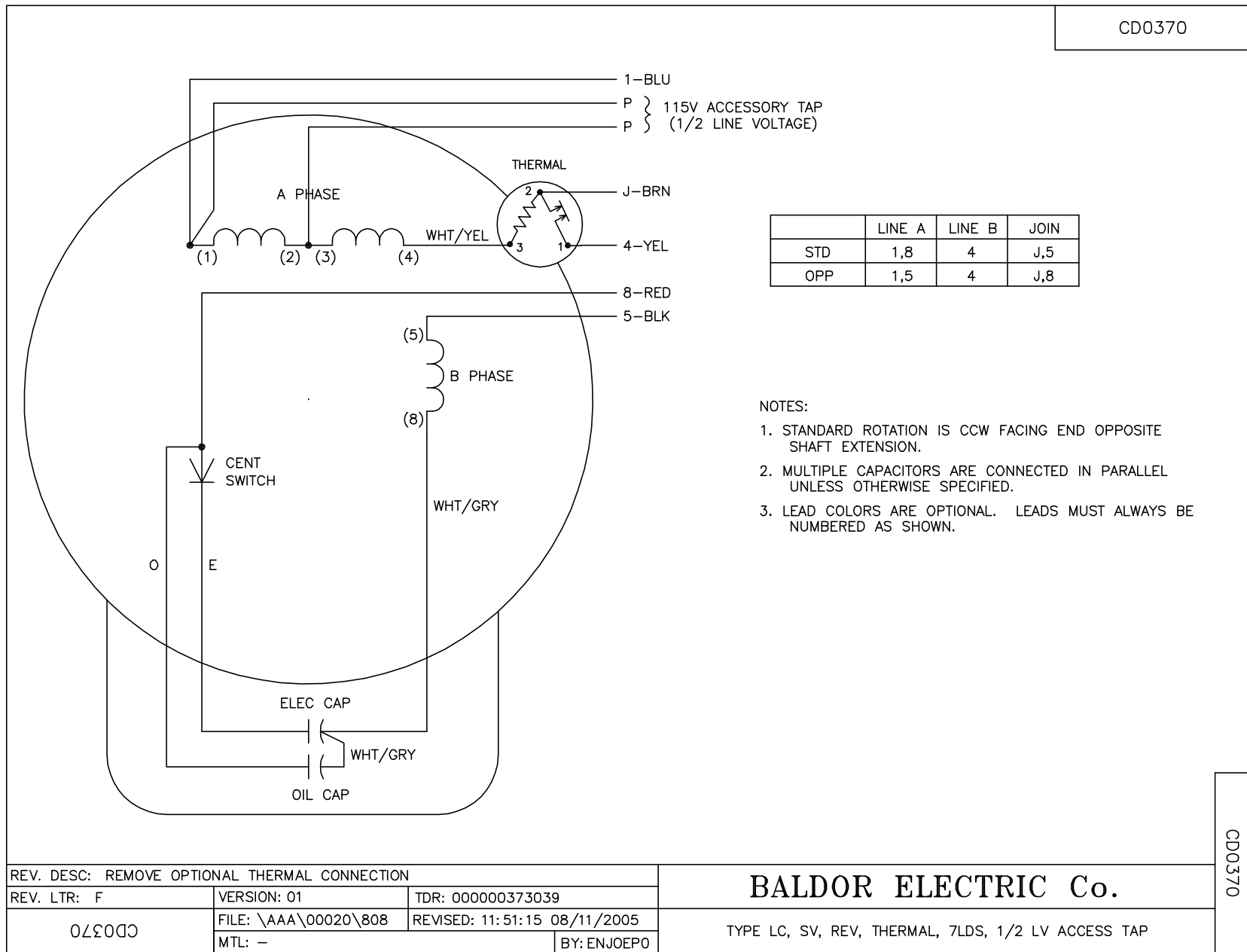


11/26/2024 ACPERF, record # 23711





CD0370



REV. DESC: REMOVE OPTIONAL THERMAL CONNECTION		
REV. LTR: F	VERSION: 01	TDR: 000000373039
CD0370	FILE: \AAA\00020\808	REVISED: 11:51:15 08/11/2005
	MTL: -	BY: ENJOEPO

**BALDOR ELECTRIC Co.**

TYPE LC, SV, REV, THERMAL, 7LDS, 1/2 LV ACCESS TAP

CD0370