



Customer information packet

IDVSNM3587T-5

2HP, 1760RPM, 3PH, 60HZ, 143TC, 0534M, TENV, F1

Class - None

Division - Not Applicable

Specifications

| | |
|--------------------------------|---------------------------|
| Enclosure | TENV |
| Frame | 145TC |
| Frame Material | Iron |
| Frequency | 60.00 Hz |
| Haz Area Class and Group | None |
| Haz Area Division | Not Applicable |
| Motor Letter Type | Three Phase |
| Output @ Frequency | 2.000 HP @ 60 HZ |
| Phase | 3 |
| Synchronous Speed @ Frequency | 1800 RPM @ 60 HZ |
| Voltage @ Frequency | 575.0 V @ 60 HZ |
| Agency Approvals | CSA UR |
| Ambient Temperature | 40 °C |
| Auxillary Box | No Auxillary Box |
| Auxillary Box Lead Termination | None |
| Base Indicator | Rigid |
| Bearing Grease Type | Polyrex EM (-20F +300F) |
| Blower | None |
| Current @ Voltage | 2.200 A @ 575.0 V |
| Design Code | B |
| Drip Cover | No Drip Cover |
| Duty Rating | CONT |
| Efficiency @ 100% Load | 86.5 % |
| Electrically Isolated Bearing | Not Electrically Isolated |
| Feedback Device | NO FEEDBACK |
| Front Shaft Indicator | None |
| Heater Indicator | No Heater |
| High Voltage Full Load Amps | 2.2 a |
| Insulation Class | F |
| Inverter Code | Inverter Ready |
| KVA Code | M |

Part detail

| | |
|--------------|------------|
| Revision | A |
| Type | AC |
| Mech. spec. | 05E534 |
| Base | |
| Status | PRD/A |
| Elec. spec. | 05WGX555 |
| Layout | 05LYE534 |
| Eff. date | 10-13-2023 |
| CD Diagram | CD0006 |
| Poles | 04 |
| Leads | 3#18 |
| Proprietary | False |
| Created date | 03-11-2022 |

| Lifting Lugs | Standard Lifting Lugs |
|--------------------------------------|------------------------------|
| Locked Bearing Indicator | Locked Bearing |
| Max Speed | 5500 rpm |
| Motor Lead Quantity/Wire Size | 3 @ 18 AWG |
| Motor Lead Termination | Flying Leads |
| Motor Standards | NEMA |
| Motor Type | 0534M |
| Mounting Arrangement | F1 |
| Number of Poles | 4 |
| Overall Length | 14.65 IN |
| Power Factor | 79 |
| Product Family | General Purpose |
| Pulley End Bearing Type | Ball |
| Pulley Face Code | C-Face |
| Pulley Shaft Indicator | Standard |
| Rodent Screen | None |
| Service Factor | 1.00 |
| Shaft Diameter | 0.875 IN |
| Shaft Ground Indicator | No Shaft Grounding |
| Shaft Rotation | Reversible |
| Shaft Slinger Indicator | No Slinger |
| Speed | 1760 rpm |
| Speed Code | Single Speed |
| Starting Method | Direct on line |
| Thermal Device - Bearing | None |
| Thermal Device - Winding | Normally Closed Thermostat |
| Vibration Sensor Indicator | No Vibration Sensor |
| Winding Thermal 1 | None |
| Winding Thermal 2 | None |

Nameplate

| NP3302L | | | |
|---------------------|---------------|----------------|------------------|
| CAT NO | IDVSNM3587T-5 | | |
| SPEC. | 05E534X555G1 | | |
| FRAME | 145TC | HP | 2 TE |
| VOLTS | 575 | | |
| MAG CUR | 1.27 | FLA | 2.2 |
| RPM | 1760 | RPM MAX | 5500 |
| HZ | 60 | PH | 3 CLASS F |
| SER.F. | 1.00 | SL HZ | 1.33 |
| NEMA-NOM-EFF | 86.5 | WK2 | 0.245 |
| RATING | 40C AMB-CONT | | |
| DE BRG | 6205 | ODE BRG | 6203 |
| CC | 010A | SN | |
| | | | |
| | | | |

Parts list

| Part number | Description | Quantity |
|-------------|--|----------|
| SA408917 | SA 05E534X555G1 | 1.000 ea |
| RA400464 | RA 05E534X555G1 | 1.000 ea |
| LB1624 | COMBINED WARNING LABEL, ISO/ANSI PICTOGR | 1.000 ea |
| HW3201A05 | 3/8-16 EYEBOLT | 1.000 ea |
| WD1000B16 | T&B CX70TN OR L70P TERMINAL LUG | 1.000 ea |
| 10XN2520A06 | 1/4 20X3/8 HX HD CAP | 2.000 ea |
| 06CB3000 | BALDOR CONDUIT BOX CAST | 1.000 ea |
| 06GS1000 | GASKET,CONDUIT BOX | 1.000 ea |
| 51XW2520A12 | .25-20 X .75, TAPTITE II, HEX WSHR SLTD | 2.000 ea |
| 11XW1032G06 | 10-32 X .38, TAPTITE II, HEX WSHR SLTD U | 1.000 ea |
| HW3001B01 | BRASS CUP WASHER, FOR #10 SCREW | 1.000 ea |
| 35EP1100B45 | FRONT TENV 203 BRG W/GRSR & THRU-SHAFT E | 1.000 ea |
| HW4500A01 | 1641B(ALEMITE)400 UNIV, GREASE FITT | 1.000 ea |
| HW5100A03 | WAVY WASHER (W1543-017) | 1.000 ea |
| 35EP1329A01 | PU EP ENCL 143-5TC 205 BRG W/GRSR & STD | 1.000 ea |
| HW4500A01 | 1641B(ALEMITE)400 UNIV, GREASE FITT | 1.000 ea |
| 51XN1032A20 | 10-32 X 1 1/4 HX WS SL SR | 2.000 ea |
| HA3100A28 | THRUBOLT 10-32 X 8.187 | 4.000 ea |
| 35FH4801G | THRU-SHAFT ENCODER COVER INV/VECTOR F1 & | 1.000 ea |
| WD4129 | 1.50 X 1.50 GRAY SNAP IN PLUG PROMOULD # | 2.000 ea |
| 10XN2520A08 | 1/4-20X1/2 HEX HEAD CAP | 4.000 ea |
| 10XN2520A08 | 1/4-20X1/2 HEX HEAD CAP | 1.000 ea |
| 06CB3500 | BALDOR CONDUIT BOX LID | 1.000 ea |
| 06GS1001 | BALDOR CONDUIT BOX GASKET | 1.000 ea |
| 51XW2520A12 | .25-20 X .75, TAPTITE II, HEX WSHR SLTD | 2.000 ea |
| HW2501D13 | KEY, 3/16 SQ X 1.375 | 1.000 ea |
| HA7000A01 | KEY RETAINER 7/8" DIA SHAFT | 1.000 ea |
| MJ5004A05 | #242-21 LOCTITE GENERAL PURPOSE MED. STR | 0.005 ea |
| 85XU0407S04 | 4X1/4 U DRIVE PIN STAINLESS | 2.000 ea |
| MJ1000A02 | GREASE, POLYREX EM EXXON | 0.050 lb |
| MG1025N19 | MUNSELL 8.5BG 3.57/2.0, GLOSS 30, B/G, | 0.022 ga |

| | | |
|------------|---|----------|
| LC0006 | CONNECTION LABEL | 1.000 ea |
| NP3302L | ALUM INV UL CSA CC (W/OUT DESIGN FIELD) | 1.000 ea |
| 36PA1001 | PKG GRP, PRINT PK1017A06 | 1.000 ea |
| MN416A01 | TAG-INSTAL-MAINT no wire (2500bx)4/22 | 1.000 ea |
| PE-0000001 | ZRTG PE ASSEMBLY | 1.000 ea |

AC Induction Motor Performance Data

Record # 87284

Typical performance - not guaranteed values

| Winding: 05WGX555-R003 | | Type: 0534M | Enclosure: TENV | |
|------------------------|-------------------|---------------------------|---|--|
| Nameplate Data | | | 575 V, 60 Hz: Single Voltage Motor | |
| Rated Output (HP) | 2 | Full Load Torque | 5.99 LB-FT | |
| Volts | 575 | Start Configuration | direct on line | |
| Full Load Amps | 2.2 | Breakdown Torque | 25.71 LB-FT | |
| R.P.M. | 1760 | Pull-up Torque | 15.03 LB-FT | |
| Hz | 60 Phase | Locked-rotor Torque | 18.22 LB-FT | |
| NEMA Design Code | B KVA Code | Starting Current | 21.07 A | |
| Service Factor (S.F.) | 1 | No-load Current | 1.27 A | |
| NEMA Nom. Eff. | 86.5 Power Factor | Line-line Res. @ 25°C | 12.8 Ω | |
| Rating - Duty | 40C AMB-CONT | Temp. Rise @ Rated Load | 56°C | |
| | | Locked-rotor Power Factor | 55.3 | |
| | | Rotor inertia | 0.245 lb-ft ² | |

Load Characteristics 575 V, 60 Hz, 2 HP

| % of Rated Load | 25 | 50 | 75 | 100 | 125 | 150 |
|-----------------|------|------|------|------|------|------|
| Power Factor | 36 | 58 | 71 | 79 | 83 | 86 |
| Efficiency | 79.2 | 86.2 | 87.4 | 86.9 | 85.6 | 83.8 |
| Speed | 1789 | 1780 | 1771 | 1760 | 1748 | 1735 |
| Line amperes | 1.32 | 1.52 | 1.82 | 2.2 | 2.64 | 3.12 |

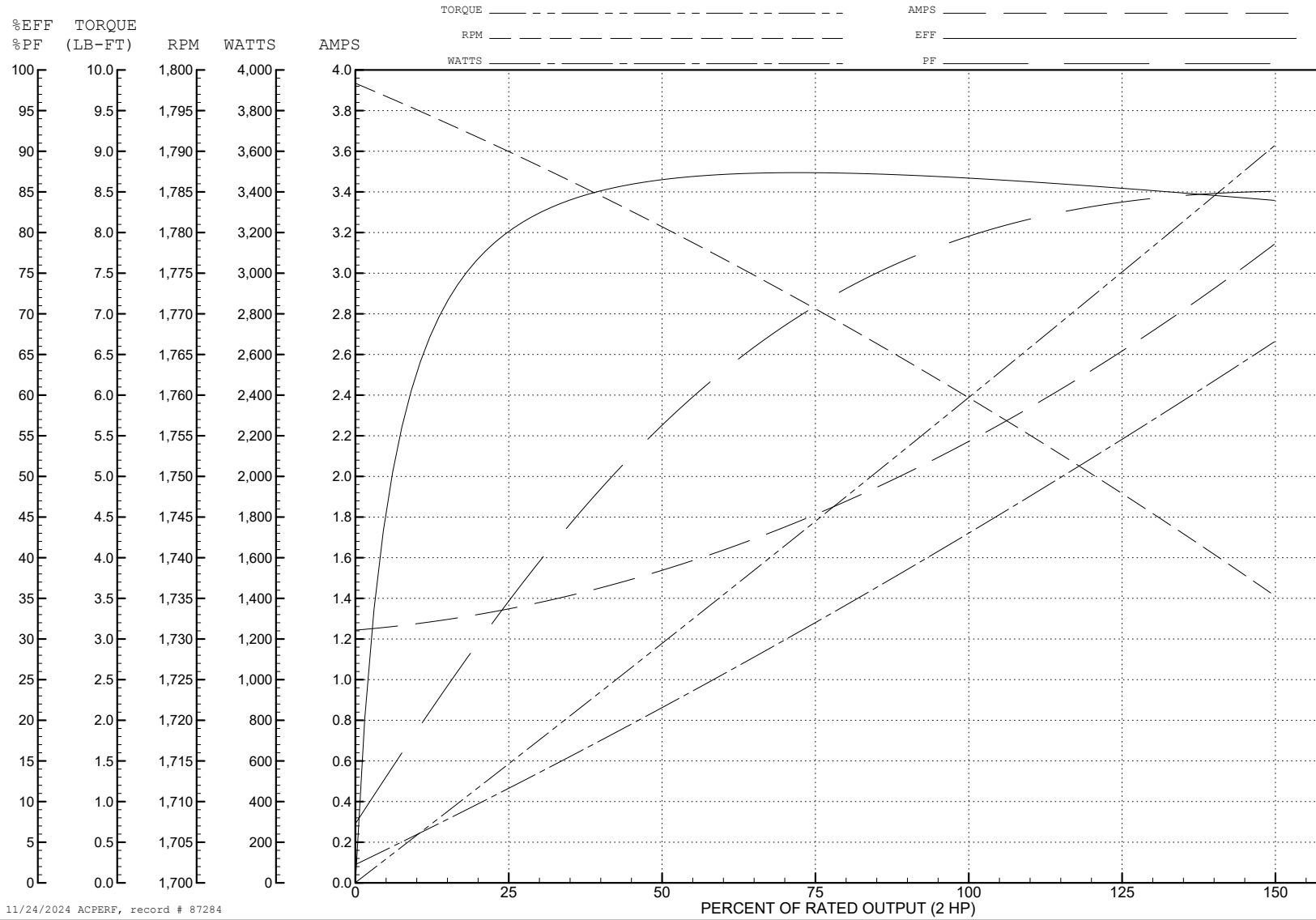
ABB Motors and Mechanical Inc.

WINDING # 05WGX555

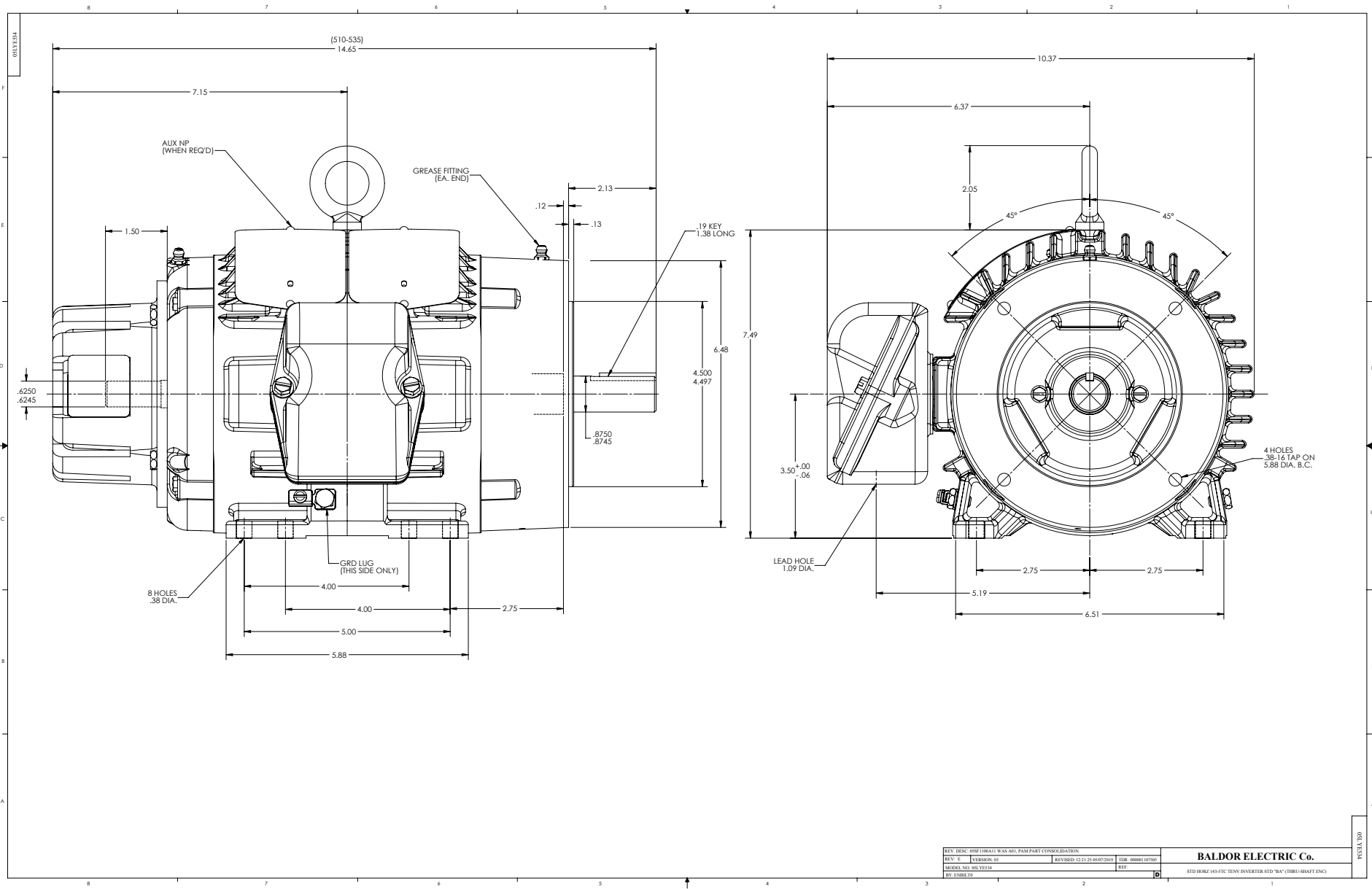
Typical performance - not guaranteed values.

2 HP 3 PH 60 HZ 1760 RPM 575 V 0534M

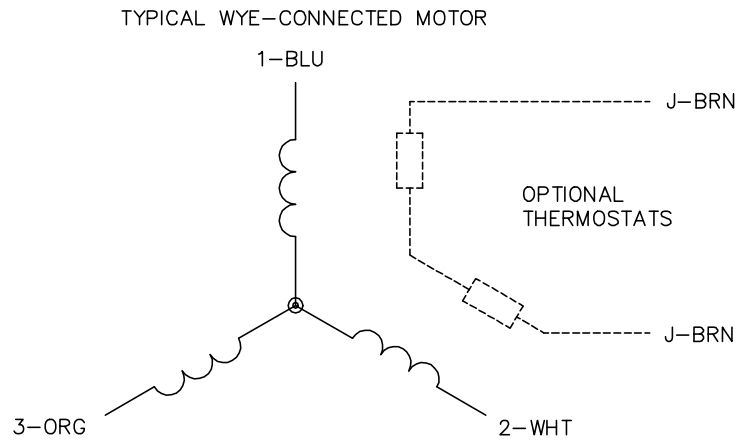
TORQUES (LB-FT): PO=25.71 PU=15.03 LR=18.22 LRA=21.07



11/24/2024 ACPERF, record # 87284



CD0006



NOTES:

1. THREE LEAD MOTOR MAY BE EITHER WYE CONNECTED OR DELTA CONNECTED.
2. INTERCHANGE ANY TWO LINE LEADS TO REVERSE ROTATION.
3. OPTIONAL THERMOSTATS ARE PROVIDED WHEN SPECIFIED.
4. ACTUAL NUMBER OF INTERNAL PARALLEL CIRCUITS MAY VARY.
5. LEAD COLORS ARE OPTIONAL. LEADS MUST BE NUMBERED AS SHOWN.

CD0006

| | | |
|-----------------------------------|------------------------------|-------------------|
| REV. DESC: ADD CLASS CONN00000007 | | |
| REV. LTR: E | VERSION: 01 | TDR: 000001099922 |
| FILE: \AAA\00005\141 | REVISED: 10:24:49 02/19/2019 | BY: ENBRIRO |
| MTL: - | © □ | |

BALDOR - RELIANCE®

3PH, SV, 3 LEADS, WYE OR DELTA CONNECTED

SH 1 of 1