

BALDOR • RELIANCE

Customer information packet

JSM3155

2HP, 3450RPM, 3PH, 60HZ, 56YZ, 3430M, OPEN, F1

Class - None

Division - Not Applicable

Specifications

Enclosure	OPEN
Frame	56YZ
Frame Material	Steel
Frequency	60.00 Hz
Haz Area Class and Group	None
Haz Area Division	Not Applicable
Motor Letter Type	Three Phase
Output @ Frequency	2.000 HP @ 60 HZ
Phase	3
Synchronous Speed @ Frequency	3600 RPM @ 60 HZ
Voltage @ Frequency	230.0 V @ 60 HZ 460.0 V @ 60 HZ
Agency Approvals	UR CSA
Ambient Temperature	40 °C
Auxillary Box	No Auxillary Box
Auxillary Box Lead Termination	None
Base Indicator	No Mounting
Bearing Grease Type	Polyrex EM (-20F +300F)
Blower	None
Current @ Voltage	2.700 A @ 460.0 V 5.400 A @ 230.0 V 6.400 A @ 208.0 V
Design Code	B
Drip Cover	Drip Cover
Duty Rating	CONT
Efficiency @ 100% Load	82.5 %
Electrically Isolated Bearing	Not Electrically Isolated
Feedback Device	NO FEEDBACK
Front Face Code	Drip Cover Mounting
Front Shaft Indicator	None
Heater Indicator	No Heater

Part detail

Revision	R
Type	AC
Mech. spec.	34L408
Base	
Status	PRD/A
Elec. spec.	34WGX636
Layout	34LYL408
Eff. date	08-05-2024
CD Diagram	CD0005
Poles	02
Leads	9#18
Proprietary	False
Created date	08-05-2009

High Voltage Full Load Amps	2.7 a
Insulation Class	B
Inverter Code	Not Inverter
KVA Code	L
Lifting Lugs	No Lifting Lugs
Locked Bearing Indicator	Locked Bearing
Motor Lead Exit	Terminal Panel Or Lead Hole
Motor Lead Quantity/Wire Size	9 @ 18 AWG
Motor Lead Termination	Flying Leads
Motor Standards	NEMA
Motor Type	3430M
Mounting Arrangement	F1
Number of Poles	2
Overall Length	13.40 IN
Power Factor	86
Product Family	General Purpose
Pulley End Bearing Type	Ball
Pulley Face Code	Pool Pump
Pulley Shaft Indicator	Ext Thread & Tapped Hole
Rodent Screen	None
RoHS Status	ROHS COMPLIANT
Service Factor	1.20
Shaft Diameter	0.625 IN
Shaft Extension Location	Pulley End
Shaft Ground Indicator	No Shaft Grounding
Shaft Rotation	Reversible
Shaft Slinger Indicator	No Slinger
Speed	3450 rpm
Speed Code	Single Speed
Starting Method	Direct on line
Thermal Device - Bearing	None
Thermal Device - Winding	None
Vibration Sensor Indicator	No Vibration Sensor
Winding Thermal 1	None

Winding Thermal 2

None

Nameplate

NP1256L									
CAT.NO.	JSM3155								
SPEC.	34L408X636								
HP	2								
VOLTS	230/460								
AMP	5.4/2.7								
RPM	3450								
FRAME	56YZ		HZ	60		PH	3		
SER.F.	1.20	CODE	L	DES	B	CLASS	B		
NEMA-NOM-EFF	82.5	PF	86						
RATING	40C AMB-CONT								
CC									
DE	6203		ODE	6203					
ENCL	OPEN	SN							
	SFA 6.2/3.1								

Parts list

Part number	Description	Quantity
SA184374	SA 34L408X636	1.000 ea
RA172213	RA 34L408X636	1.000 ea
WD4100A01	DP-875 HEYCO PLUG OR 62MP0875 MICRO PLAS	1.000 ea
11XW0832G06	#8-32 X 3/8, TAPTITE II, HEX WSHR SLTD	1.000 ea
SP1000A09	TERM BOARD, MODEL 34 SW, (RPL SP1000A01)	1.000 ea
51XW0832A07	8-32 X .44, TAPTITE II, HEX WSHR SLTD SE	2.000 ea
RM1010A22	VINYL CAP, CAPLUG EZ-490-12, .490 DIA.	1.000 ea
34EP3202A02	FR ENDPLATE, MACH	1.000 ea
HW5100A03	WAVY WASHER (W1543-017)	1.000 ea
34EP3501A14E	ENDPLATE, MACH W/BLACK E-COATING	1.000 ea
51XN1032A20	10-32 X 1 1/4 HX WS SL SR	2.000 ea
34AD2007	BAFFLE PLATE INJECTION MOLD	1.000 ea
51XT0632A06	6-32X3/8 TY23 HXWS SLDSR	4.000 ea
34FH4500A02P	DRIPCOVER, MODEL 34	1.000 ea
51XW0832A07	8-32 X .44, TAPTITE II, HEX WSHR SLTD SE	2.000 ea
34CB4501SP	TERMINAL BOX LID, STAMPED X (PLATED)	1.000 ea
34GS1005	GASKET, TERM PLATE LID	1.000 ea
51XW0832A07	8-32 X .44, TAPTITE II, HEX WSHR SLTD SE	2.000 ea
51XW0832A07	8-32 X .44, TAPTITE II, HEX WSHR SLTD SE	2.000 ea
HW1000A10	#10 FLAT WASHER (SAE)	8.000 ea
MG1050G01	CELEROL MEDIUM CHARCOAL METALLIC GRAY	0.014 ga
MG1500Y02	WILKOPON PRIMER YELLOW	0.014 ga
85XU0407S04	4X1/4 U DRIVE PIN STAINLESS	2.000 ea
HA3100A25	THRUBOLT 10-32 X 11.000	4.000 ea
MN416A01	TAG-INSTAL-MAINT no wire (2500bx)4/22	1.000 ea
LC0005E01	CONN.DIA./WARNING LABEL (LC0005/LB1119N)	1.000 ea
NP1256L	ALUM UL CC INDUSTRIAL MOTOR A60	1.000 ea
35PA1066	PKG GRP, PRINT PK1008A06	1.000 ea
PK3083	STYROFOAM PACKING CRADLE	1.000 ea
PK3088	MICROFOAM, 8"X"8 PERF. SHEETS	1.000 ea

AC Induction Motor Performance Data

Record # 7504

Typical performance - not guaranteed values

Winding: 34WGX636-R001		Type: 3430M		Enclosure: OPSB	
Nameplate Data			460 V, 60 Hz: High Voltage Connection		
Rated Output (HP)	2	Full Load Torque	3 LB-FT		
Volts	230/460	Start Configuration	direct on line		
Full Load Amps	5.4/2.7	Breakdown Torque	13 LB-FT		
R.P.M.	3450	Pull-up Torque	11.5 LB-FT		
Hz	60 Phase	3	Locked-rotor Torque	15.1 LB-FT	
NEMA Design Code	B KVA Code	L	Starting Current	24.5 A	
Service Factor (S.F.)		1.2	No-load Current	1.3 A	
NEMA Nom. Eff.	82.5 Power Factor	86	Line-line Res. @ 25°C	6.24 Ω	
Rating - Duty		40C AMB-CONT	Temp. Rise @ Rated Load	42°C	
S.F. Amps		6.2/3.1	Temp. Rise @ S.F. Load	52°C	

Load Characteristics 460 V, 60 Hz, 2 HP

% of Rated Load	25	50	75	100	125	150	S.F.
Power Factor	51	70	80	86	90	92	89
Efficiency	71.7	80	82.3	82.6	81.8	80.2	82
Speed	3550	3511	3470	3427	3376	3321	3386
Line amperes	1.5	1.8	2.2	2.7	3.2	3.9	3.1

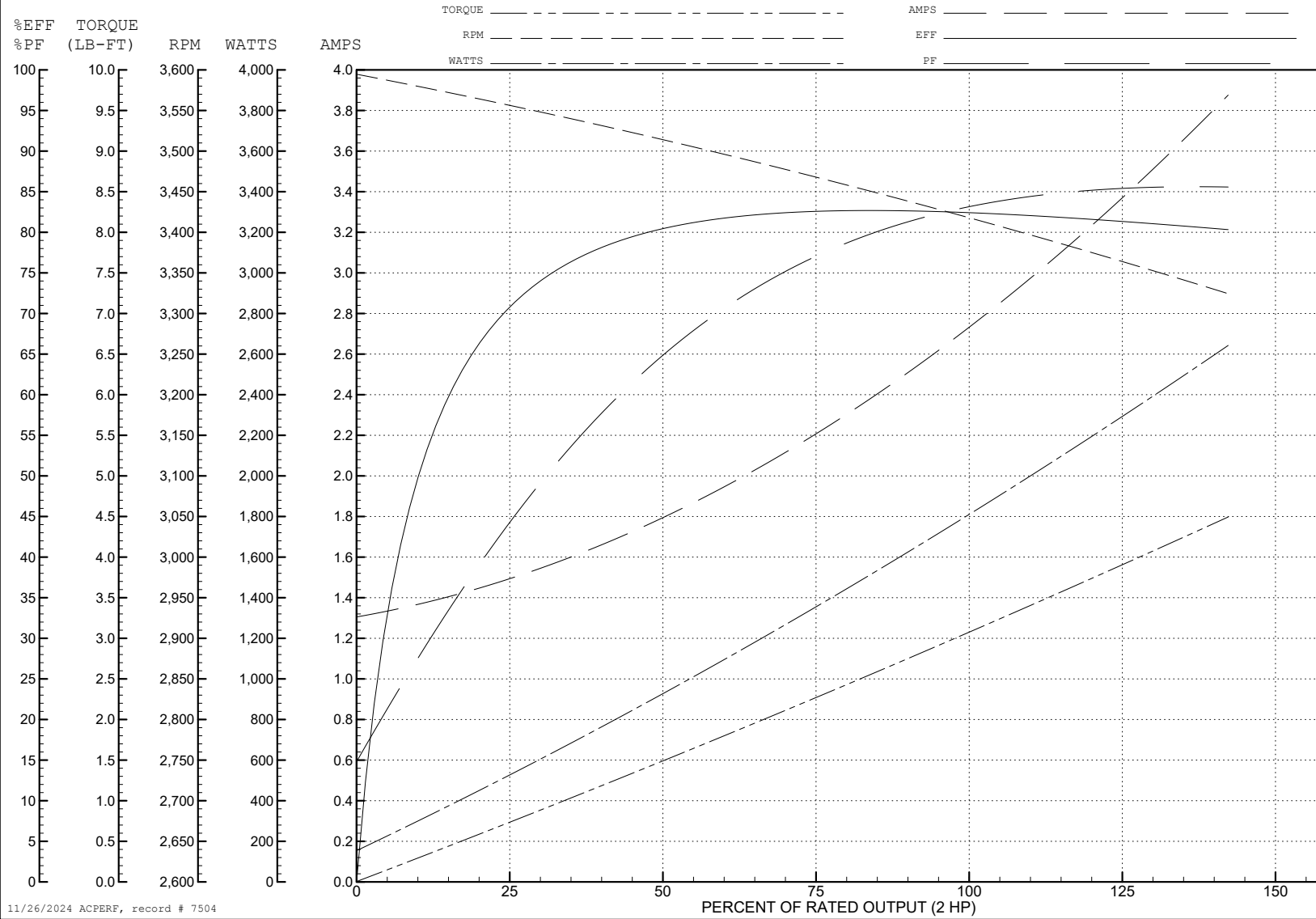
ABB Motors and Mechanical Inc.

WINDING # 34WGx636

Typical performance - not guaranteed values.

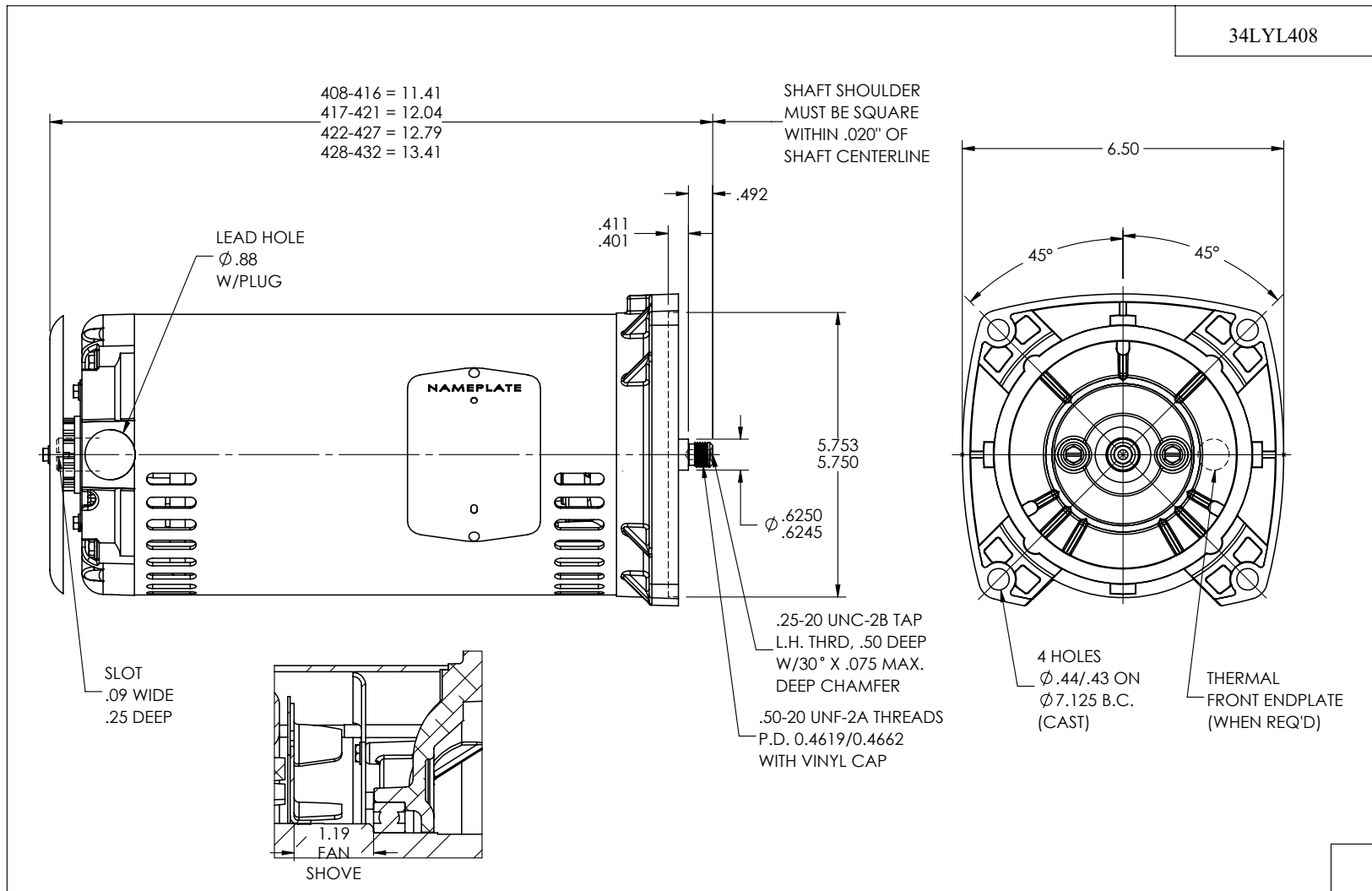
2 HP 3 PH 60 HZ 3450 RPM 460 V 3430M

TORQUES (LB-FT): PO=13 PU=11.5 LR=15.1 LRA=24.5



11/26/2024 ACPERF, record # 7504

34LYL408



CUSTOMER IS RESPONSIBLE FOR DETERMINING THAT THE PRODUCT WILL PERFORM SUITABLY IN THE INTENDED APPLICATION

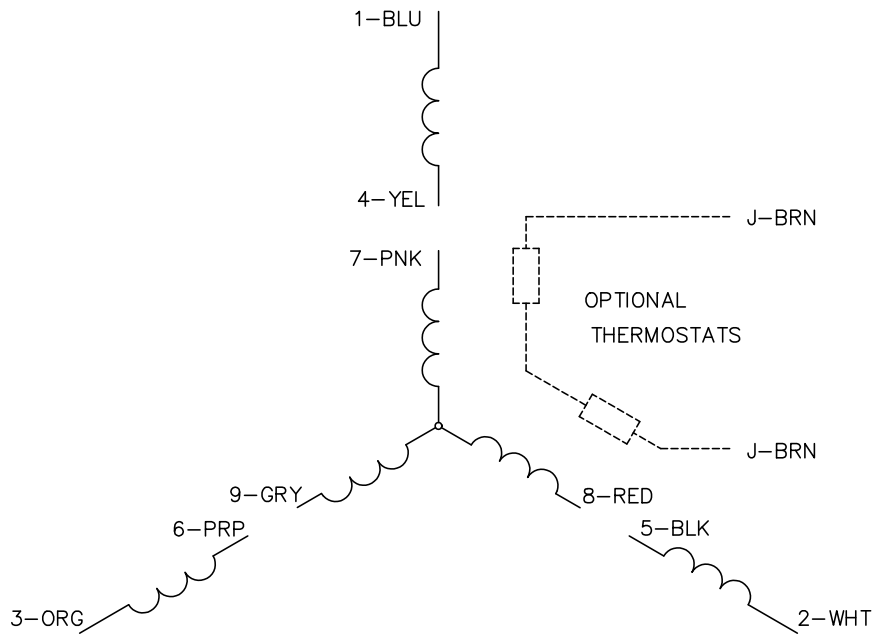
REV. DESC: LOAD TO SOLIDWORKS - REV B			
REV: C	VERSION: 03	REVISED: 10:26:10 01/02/2023	TDR: 000001201165
80411713 34LYL408	MODEL NO. 34LYL408	REF: -	
BY: ENFRAJ0			

BALDOR - RELIANCE®

VERT 34M 56YZ OPEN W/TERM PANEL (POOL PUMP) W/S.S. SHAFT

34LYL408

CD0005



LOW VOLTAGE
(2Y)



LINE

HIGH VOLTAGE
(1Y)



LINE

NOTES:

1. INTERCHANGE ANY TWO LINE LEADS TO REVERSE ROTATION.
2. OPTIONAL THERMOSTATS ARE PROVIDED WHEN SPECIFIED.
3. ACTUAL NUMBER OF INTERNAL PARALLEL CIRCUITS MAY BE A MULTIPLE OF THOSE SHOWN ABOVE.
4. LEAD COLORS ARE OPTIONAL. LEADS MUST ALWAYS BE NUMBERED AS SHOWN.

CD0005

REV. DESC: REVISE TO SHOW OPTIONAL COLORS			
REV. LTR: E	BY: JLP	REVISED: 01/19/99 10:15	TDR: 0171435
S00000		FILE: AAA00005140	MDL: -
		MTL: -	

BALDOR ELECTRIC Co.

3PH, DV, 9 LEADS