



---

# Customer information packet

## L1309-50

1/KW .75, 2850RPM, 1PH, 50HZ, 56, 3432LC, OPEN

Class - None

Division - Not Applicable

## Specifications

Enclosure	OPEN
Frame	56
Frame Material	Steel
Frequency	50.00 Hz
Haz Area Class and Group	None
Haz Area Division	Not Applicable
Motor Letter Type	Cap Start, Cap Run
Output @ Frequency	1.000 HP @ 50 HZ
Phase	1
Synchronous Speed @ Frequency	3000 RPM @ 50 HZ
Voltage @ Frequency	110.0 V @ 50 HZ 220.0 V @ 50 HZ
Agency Approvals	CE CSA UR WEEE
Ambient Temperature	40 °C
Auxillary Box	No Auxillary Box
Auxillary Box Lead Termination	None
Base Indicator	Rigid
Bearing Grease Type	Polyrex EM (-20F +300F)
Blower	None
Design Code	N
Drip Cover	No Drip Cover
Duty Rating	CONT
Electrically Isolated Bearing	Not Electrically Isolated
Feedback Device	NO FEEDBACK
Front Shaft Indicator	None
Heater Indicator	No Heater
Insulation Class	B
Inverter Code	Not Inverter
Lifting Lugs	No Lifting Lugs

## Part detail

Revision	C
Type	AC
Mech. spec.	34F353
Base	
Status	PRD/A
Elec. spec.	34WGR750
Layout	34LYF353
Eff. date	10-25-2024
CD Diagram	CD0055
Poles	02
Leads	4#16 A PH,2#18 B PH
Proprietary	False
Created date	03-01-2023

<b>Locked Bearing Indicator</b>	No Locked Bearing
<b>Motor Lead Quantity/Wire Size</b>	4 @ 16 AWG, A PH
<b>Motor Lead Termination</b>	Flying Leads
<b>Motor Standards</b>	NEMA
<b>Motor Type</b>	3432LC
<b>Mounting Arrangement</b>	F1
<b>Number of Poles</b>	2
<b>Overall Length</b>	11.50 IN
<b>Product Family</b>	General Purpose
<b>Pulley End Bearing Type</b>	Ball
<b>Pulley Face Code</b>	Standard
<b>Pulley Shaft Indicator</b>	Standard
<b>Rodent Screen</b>	None
<b>Service Factor</b>	1.25
<b>Shaft Diameter</b>	0.625 IN
<b>Shaft Ground Indicator</b>	No Shaft Grounding
<b>Shaft Rotation</b>	Reversible
<b>Shaft Slinger Indicator</b>	No Slinger
<b>Speed</b>	2850 rpm
<b>Speed Code</b>	Single Speed
<b>Starting Method</b>	Direct on line
<b>Thermal Device - Bearing</b>	None
<b>Thermal Device - Winding</b>	None
<b>Vibration Sensor Indicator</b>	No Vibration Sensor
<b>Winding Thermal 1</b>	None
<b>Winding Thermal 2</b>	None

**Nameplate**

<b>NP1372L</b>	
<b>CAT.NO.</b>	L1309-50
<b>SPEC.</b>	34F353R750
<b>HP</b>	1/KW .75
<b>VOLTS</b>	110/220
<b>AMP</b>	9/4.5
<b>R.P.M. (1/MIN)</b>	2850
<b>FRAME</b>	56 <b>HZ</b> 50 <b>PH</b> 1
<b>SER.F.</b>	1.25 <b>CODE</b> H <b>DES</b> - <b>CL</b> B
<b>NEMA-NOM-EFF</b>	77.4 <b>PF</b> 96
<b>RATING</b>	40C AMB-CONT
<b>CC</b>	IP23 17KG IC01
<b>DE</b>	6203 <b>ODE</b> 6203
<b>ENCL</b>	OPEN <b>SN</b>
	IE2-50HZ 77(75%),73(50%)

## Parts list

Part number	Description	Quantity
SA411978	SA 34F353R750	1.000 ea
RA403656	RA 34F353R750	1.000 ea
OC3035F09SP	CYL OIL CAP 35MFD/370V	1.000 ea
EC1270A02SP	ELEC CAP, 270-324 MFD, 125V, 1.48D X 3.	1.000 ea
NS2512A01	INSULATOR, CONDUIT BOX X	1.000 ea
34CB3002A	CB CAST W/.88 DIA HOLE	1.000 ea
51XB1016A07	10-16 X 7/16 HXWSSLD SERTYB	2.000 ea
11XW1032G06	10-32 X .38, TAPTITE II, HEX WSHR SLTD U	1.000 ea
51XW0832A07	8-32 X .44, TAPTITE II, HEX WSHR SLTD SE	2.000 ea
SP1006A01	INSULATOR MODEL 35 SWITCH	1.000 ea
34EP3210A01SP	FR ENDPLATE, MACH	1.000 ea
34CB3801	CAPACITOR BOX, DIE CAST	1.000 ea
51XB1214A08	12-14 X 1/2HX WS SL SR TYBX	2.000 ea
34GS5003A01	FOAM SLEEVE, ID = 2 1/16" X 4 3/8"	1.000 ea
HW5100A03	WAVY WASHER (W1543-017)	1.000 ea
34EP3212A02	PU ENDPLATE, MODEL 34 OPEN	1.000 ea
XY1032A02	10-32 HEX NUT DIRECTIONAL SERRATION	4.000 ea
34CB4517	CB LID 4 MTG HOLES .22 DIA STAMPED, FOR	1.000 ea
51XW0832A07	8-32 X .44, TAPTITE II, HEX WSHR SLTD SE	4.000 ea
HW2501D13	KEY, 3/16 SQ X 1.375	1.000 ea
HA7000A04	KEY RETAINER 0.625 DIA SHAFTS	1.000 ea
85XU0407S04	4X1/4 U DRIVE PIN STAINLESS	2.000 ea
MG1050G01	CELEROL MEDIUM CHARCOAL METALLIC GRAY	0.014 ga
SP5181A01	MODEL 35 TORQ STATIONARY SWITCH LEAD ASS	1.000 ea
HA3100A38	THRUBOLT 10-32 X 9.375	4.000 ea
MN416A01	TAG-INSTAL-MAINT no wire (2500bx)4/22	1.000 ea
LC0001A01	CONN LABEL / WARNING LABEL (LC0001 / LB1	1.000 ea
NP1372L	ALUM UL CE UKCA WEEE CC, A60	1.000 ea
35PA1066	PKG GRP, PRINT PK1008A06	1.000 ea

**AC Induction Motor Performance Data**

Record # 101557

Typical performance - not guaranteed values

Winding: 34WGR750-R001		Type: 3432LC	Enclosure: OPEN	
<b>Nameplate Data</b>			<b>220 V, 50 Hz: High Voltage Connection</b>	
Rated Output (KW)	.75	Full Load Torque	1.855 LB-FT	
Volts	110/220	Start Configuration	direct on line	
Full Load Amps	9/4.5	Breakdown Torque	5.35 LB-FT	
R.P.M.	2850	Pull-up Torque	2.02 LB-FT	
Hz	50 Phase	1	Locked-rotor Torque	5.62 LB-FT
NEMA Design Code	- KVA Code	H	Starting Current	29.6 A
Service Factor (S.F.)	1.25		No-load Current	1.26 A
NEMA Nom. Eff.	77.4 Power Factor	96	Line-line Res. @ 25°C	2.0318 Ω A Ph 2.1913 Ω B Ph
Rating - Duty	40C AMB-CONT		Temp. Rise @ Rated Load	31°C
S.F. Amps	11.6/5.8		Temp. Rise @ S.F. Load	43°C

**Load Characteristics 220 V, 50 Hz, 0.75 KW**

% of Rated Load	25	50	75	100	125	150	S.F.
Power Factor	82	91	95	96	96	96	96
Efficiency	59.5	73.4	78	79	77.1	72.9	77.1
Speed	2960.2	2928.4	2892.4	2849.7	2800.2	2729.5	2800
Line amperes	1.77	2.54	3.47	4.52	5.75	7.31	5.75

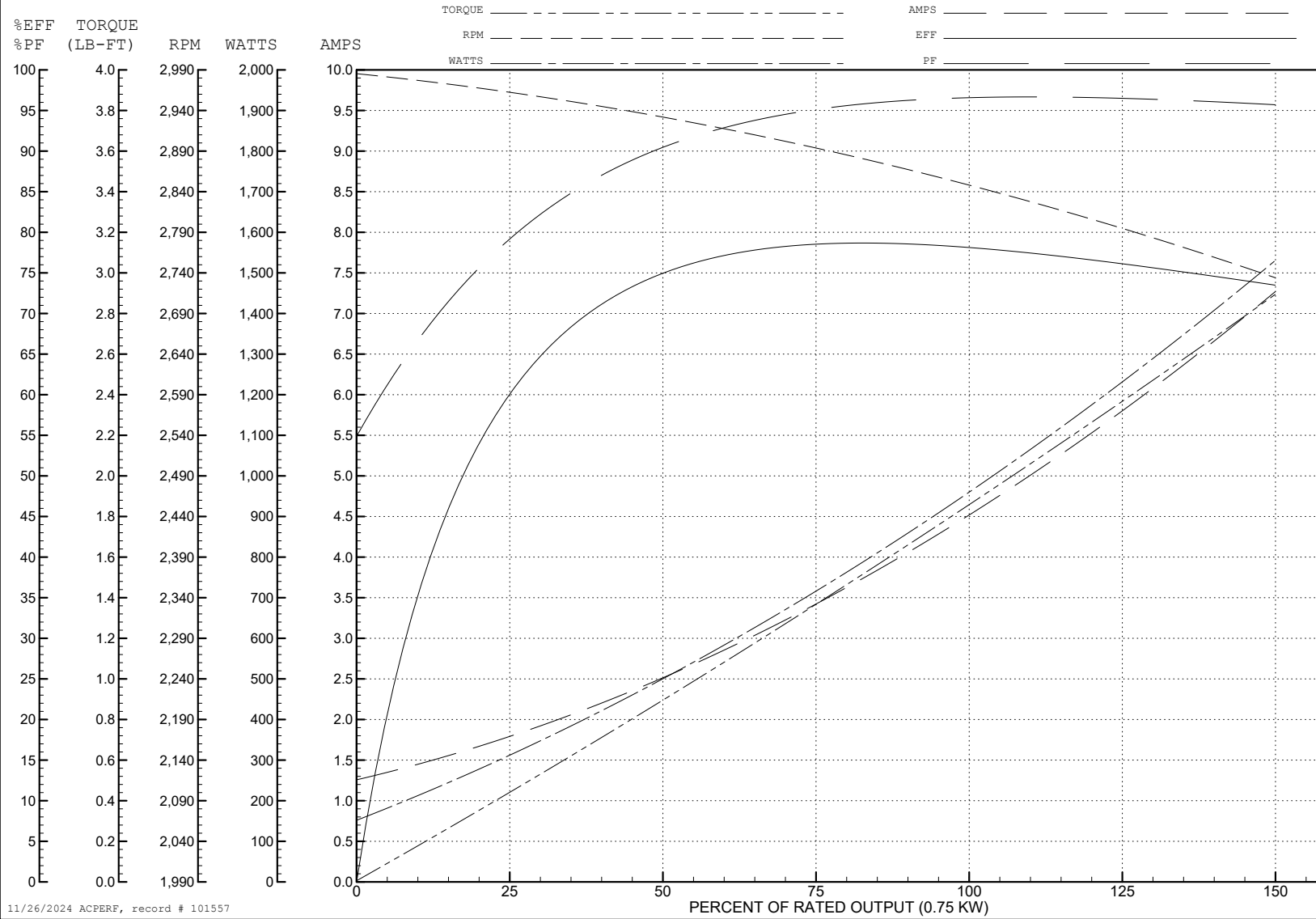
ABB Motors and Mechanical Inc.

WINDING # 34WGR750

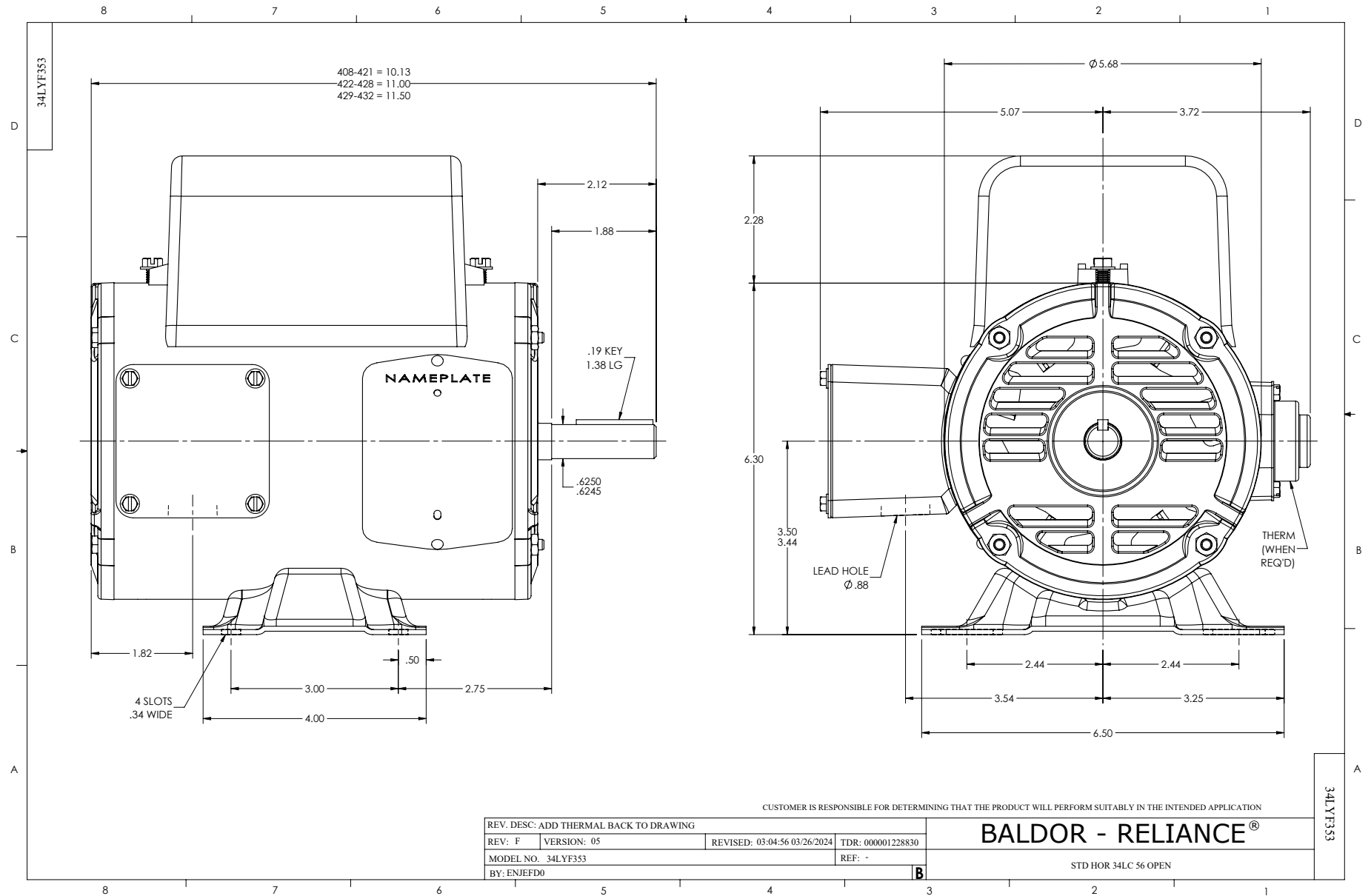
Typical performance - not guaranteed values.

0.75 KW 1 PH 50 HZ 2850 RPM 220 V 3432LC

TORQUES (LB-FT): PO=5.35 PU=2.02 LR=5.62 LRA=29.6

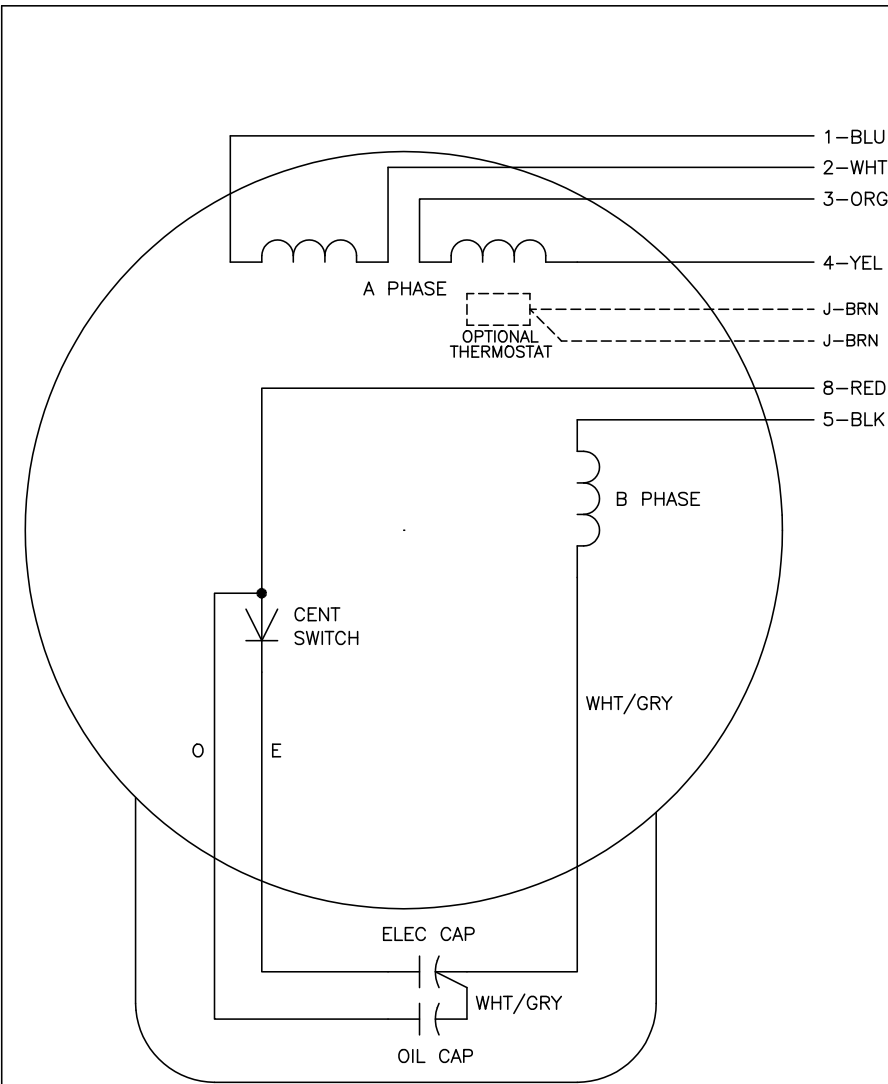


11/26/2024 ACPERF, record # 101557





CD0055



	LINE A	LINE B	JOIN
HIGH STD	1	4,5	2,3,8
HIGH OPP	1	4,8	2,3,5
LOW STD	1,3,8	2,4,5	-
LOW OPP	1,3,5	2,4,8	-

NOTES:

1. STANDARD ROTATION IS CCW FACING END OPPOSITE SHAFT EXTENSION.
2. OPTIONAL THERMOSTAT IS PROVIDED WHEN SPECIFIED.
3. MULTIPLE CAPACITORS ARE CONNECTED IN PARALLEL UNLESS OTHERWISE SPECIFIED.
4. LEAD COLORS ARE OPTIONAL. LEADS MUST ALWAYS BE NUMBERED AS SHOWN.

CD0055

REV. DESC: REVISE TO SHOW OPTIONAL COLORS			
REV. LTR: D	BY: JLP	REVISED: 04/08/99 1:17	TDR: 0178636
C00000		FILE: AAA00007414	MDL: -
		MTL: -	

**BALDOR ELECTRIC Co.**

TYPE LC, DV, REV, 6 LEADS