



Customer information packet

PCL1322M

2HP, 1725RPM, 1PH, 60HZ, 56C, 3532LC, OPEN, F1

Class - None

Division - Not Applicable

Specifications

Enclosure	OPEN
Frame	56C
Frame Material	Steel
Frequency	60.00 Hz
Haz Area Class and Group	None
Haz Area Division	Not Applicable
Motor Letter Type	Cap Start, Cap Run
Output @ Frequency	2.000 HP @ 60 HZ
Phase	1
Synchronous Speed @ Frequency	1800 RPM @ 60 HZ
Voltage @ Frequency	230.0 V @ 60 HZ 115.0 V @ 60 HZ
Agency Approvals	CSA UR
Ambient Temperature	40 °C
Auxillary Box	No Auxillary Box
Auxillary Box Lead Termination	None
Base Indicator	Rigid
Bearing Grease Type	Polyrex EM (-20F +300F)
Blower	None
Current @ Voltage	9.200 A @ 230.0 V 18.400 A @ 115.0 V
Design Code	L
Drip Cover	No Drip Cover
Duty Rating	CONT
Efficiency @ 100% Load	78.5 %
Electrically Isolated Bearing	Not Electrically Isolated
Feedback Device	NO FEEDBACK
Front Face Code	Standard
Front Shaft Indicator	None
Heater Indicator	No Heater
High Voltage Full Load Amps	9.2 a

Part detail

Revision	BA
Type	AC
Mech. spec.	35K267
Base	
Status	INA/A
Elec. spec.	35WGY690
Layout	35LYK267
Eff. date	03-07-2017
CD Diagram	CD0320
Poles	04
Leads	4#16 A&J,2#18 B PH,1#14 #4TH
Proprietary	False
Created date	01-01-0001

Insulation Class	F
Inverter Code	Not Inverter
KVA Code	J
Lifting Lugs	No Lifting Lugs
Locked Bearing Indicator	Locked Bearing
Motor Lead Exit	Ko Box
Motor Lead Quantity/Wire Size	4 @ 16 AWG, A&J
Motor Lead Termination	Flying Leads
Motor Standards	NEMA
Motor Type	3532LC
Mounting Arrangement	F1
Number of Poles	4
Overall Length	12.94 IN
Power Factor	89
Product Family	General Purpose
Pulley End Bearing Type	Ball
Pulley Face Code	C-Face
Pulley Shaft Indicator	Standard
Rodent Screen	None
RoHS Status	ROHS COMPLIANT
Service Factor	1.15
Shaft Diameter	0.625 IN
Shaft Extension Location	Pulley End
Shaft Ground Indicator	No Shaft Grounding
Shaft Rotation	Reversible
Shaft Slinger Indicator	No Slinger
Speed	1725 rpm
Speed Code	Single Speed
Starting Method	Direct on line
Thermal Device - Bearing	None
Thermal Device - Winding	Do Not Use
Vibration Sensor Indicator	No Vibration Sensor
Winding Thermal 1	Manual Thermal Overload
Winding Thermal 1 Location	SK

Winding Thermal 2

None

Nameplate

NP1257L									
CAT.NO.	PCL1322M								
SPEC.	35K267Y690								
HP	2								
VOLTS	115/230								
AMP	18.4/9.2								
RPM	1725								
FRAME	56C			HZ	60		PH	1	
SER.F.	1.15	CODE	J	DES	L	CL	F		
NEMA-NOM-EFF	78.5	PF	89						
RATING	40C AMB-CONT								
CC									
DE	6205	ODE	6203						
ENCL	OPEN	SN							

Parts list

Part number	Description	Quantity
SA024242	SA 35K267Y690	1.000 ea
RA020292	RA 35K267Y690	1.000 ea
OC3060C09SP	CAPACITOR 60 MFD 240 VAC	1.000 ea
TPCRT33CB	THERMAL 1PH 1.00 MAN 120C	1.000 ea
EC1645A06SP	ELEC CAP, 645-774 MFD, 125V, 2.06D X 4.	1.000 ea
WD3006A01	RSS-2-103JT 2W 10K RES. METAL OXIDE 5%	1.000 ea
TP5059	GENERIC WELDED THERMAL, 7" LEAD KIT	1.000 ea
NS2512A01	INSULATOR, CONDUIT BOX X	1.000 ea
35CB3007A17	35 CB .88 DIA @ 6:00, 1.00 MTO @ 3:00	1.000 ea
36GS1000SP	GASKET-CONDUIT BOX, .06 THICK #SV-330 LE	1.000 ea
51XB1016A07	10-16 X 7/16 HXWSSLD SERTYB	2.000 ea
11XW1032G06	10-32 X .38, TAPTITE II, HEX WSHR SLTD U	1.000 ea
HA6015A02	THERMAL RETAINER (PLATED)	1.000 ea
51XB1214A10	12-14 X 5/8HX WS SL SR TYBX	2.000 ea
35EP3209G00	STD FR EP OPEN-203BRG-35L OR M FRAME--LE	1.000 ea
51XW0832A07	8-32 X .44, TAPTITE II, HEX WSHR SLTD SE	2.000 ea
35CB3801	CAPACITOR COVER, CAST	1.000 ea
HA7010	CAPACITOR RETENTION CLAMP	1.000 ea
NS2501A02	INSULATOR, CAPACITOR BOX	1.000 ea
51XB1016A08	10-16X 1/2HXWSSLD SERTYB	2.000 ea
NS2500A02	INSULATOR, MAN THER PROT	1.000 ea
HW5100A03	WAVY WASHER (W1543-017)	1.000 ea
35EP3402C00	STD FACE MTD END PLATE OPEN NEMA 56C 05	1.000 ea
35AD2000	AIR BAFFLE - GALVANNEAL	1.000 ea
60XW0632A06	6-32 X 3/8 TORX HEAD SCREW TAPTITE II	4.000 ea
51XN1032A20	10-32 X 1 1/4 HX WS SL SR	2.000 ea
35CB4521GX	CONDUIT BOX LID KIT **ORDER INDIV PARTS	1.000 ea
51XW0832A07	8-32 X .44, TAPTITE II, HEX WSHR SLTD SE	4.000 ea
HW2501D13	KEY, 3/16 SQ X 1.375	1.000 ea
HA7000A04	KEY RETAINER 0.625 DIA SHAFTS	1.000 ea
85XU0407S04	4X1/4 U DRIVE PIN STAINLESS	2.000 ea

LB1087	LABEL,MANUAL RESET (ROLL LABEL)	1.000 ea
MJ1000A02	GREASE, POLYREX EM EXXON	0.050 lb
MG1000G27	MED CHARCOAL METALLIC GREY	0.017 ga
SP5181A01	MODEL 35 LC TORQ STAT SWITCH LEAD ASSY	1.000 ea
WD1000A15	3-520132-2 AMP FLAG (4M/RL NON-CANC/NON-	4.000 ea
HA3100A18	THRUBOLT 10-32 X 9.250	4.000 ea
LB1624	WARNING LABEL	1.000 ea
LC0269	1PH,DV,REV,THERMAL,7 LD,L.AMP THRU HTR H	1.000 ea
NP1257L	ALUM UL CC THERMAL REV MTG	1.000 ea
35PA1066	PKG GRP, PRINT PK1008A06	1.000 ea
MN416A01	TAG-INSTAL-MAINT no wire (2500bx)4/22	1.000 ea

AC Induction Motor Performance Data

Record # 61266

Typical performance - not guaranteed values

Winding: 35WGY690-R002		Type: 3532LC		Enclosure: OPEN	
Nameplate Data			230 V, 60 Hz: High Voltage Connection		
Rated Output (HP)	2	Full Load Torque	6 LB-FT		
Volts	115/230	Start Configuration	direct on line		
Full Load Amps	18.4/9.2	Breakdown Torque	13 LB-FT		
R.P.M.	1725	Pull-up Torque	12.5 LB-FT		
Hz	60 Phase	1	Locked-rotor Torque	15.5 LB-FT	
NEMA Design Code	L KVA Code	J	Starting Current	60 A	
Service Factor (S.F.)	1.15	No-load Current	3 A		
NEMA Nom. Eff.	78.5 Power Factor	89	Line-line Res. @ 25°C	1.62 Ω A Ph 1.597 Ω B Ph	
Rating - Duty	40C AMB-CONT	Temp. Rise @ Rated Load	47°C		
S.F. Amps		Temp. Rise @ S.F. Load	62°C		

Load Characteristics 230 V, 60 Hz, 2 HP

% of Rated Load	25	50	75	100	125	150	S.F.
Power Factor	60	83	87	90	92	90	91
Efficiency	67	74.9	78.7	79	75.2	71.7	76.7
Speed	1789	1775	1760	1743	1721	1694	1730
Line amperes	4.1	5.6	7.1	9.1	11.6	14.6	10.6

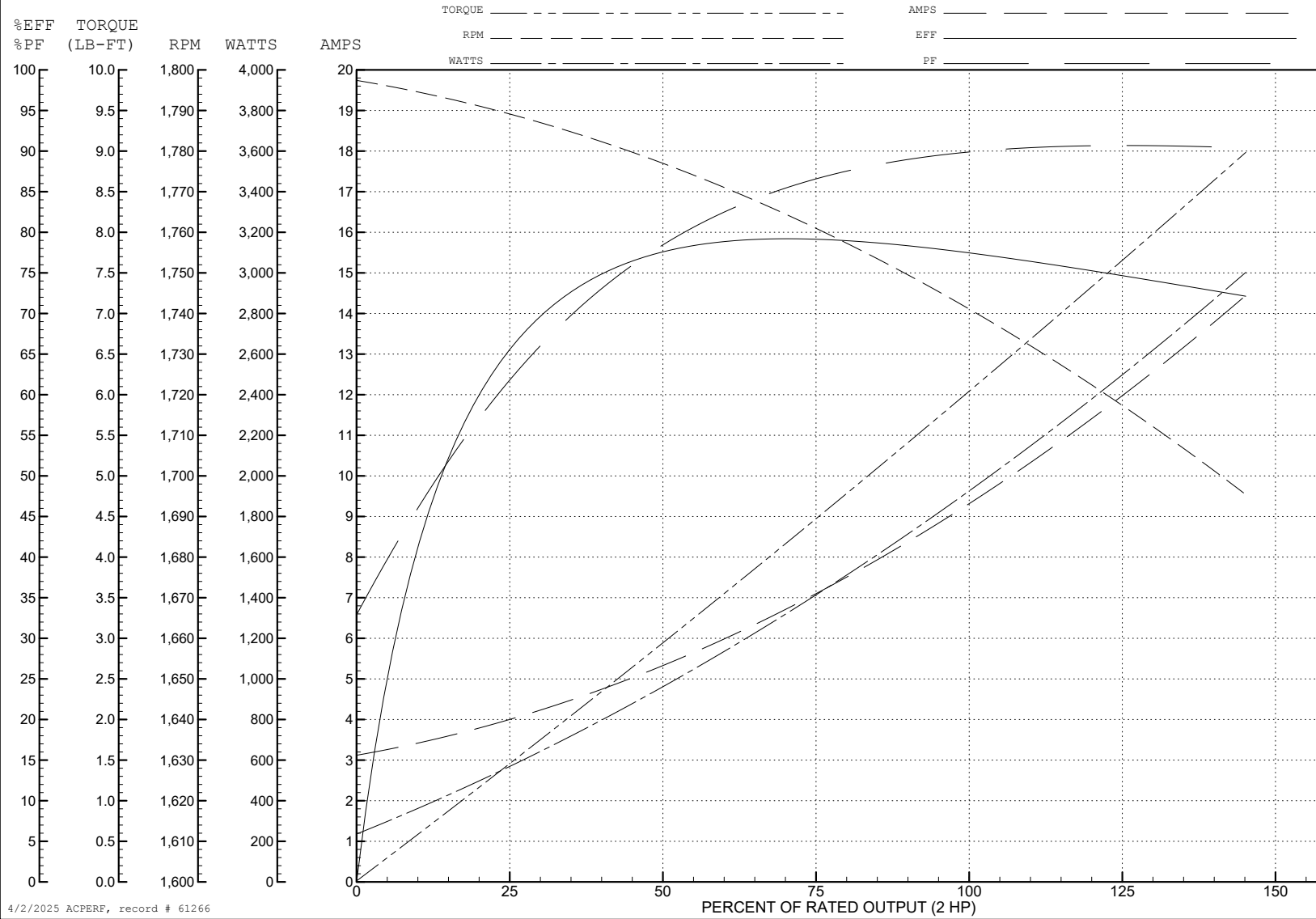
ABB Motors and Mechanical Inc.

WINDING # 35WGY690

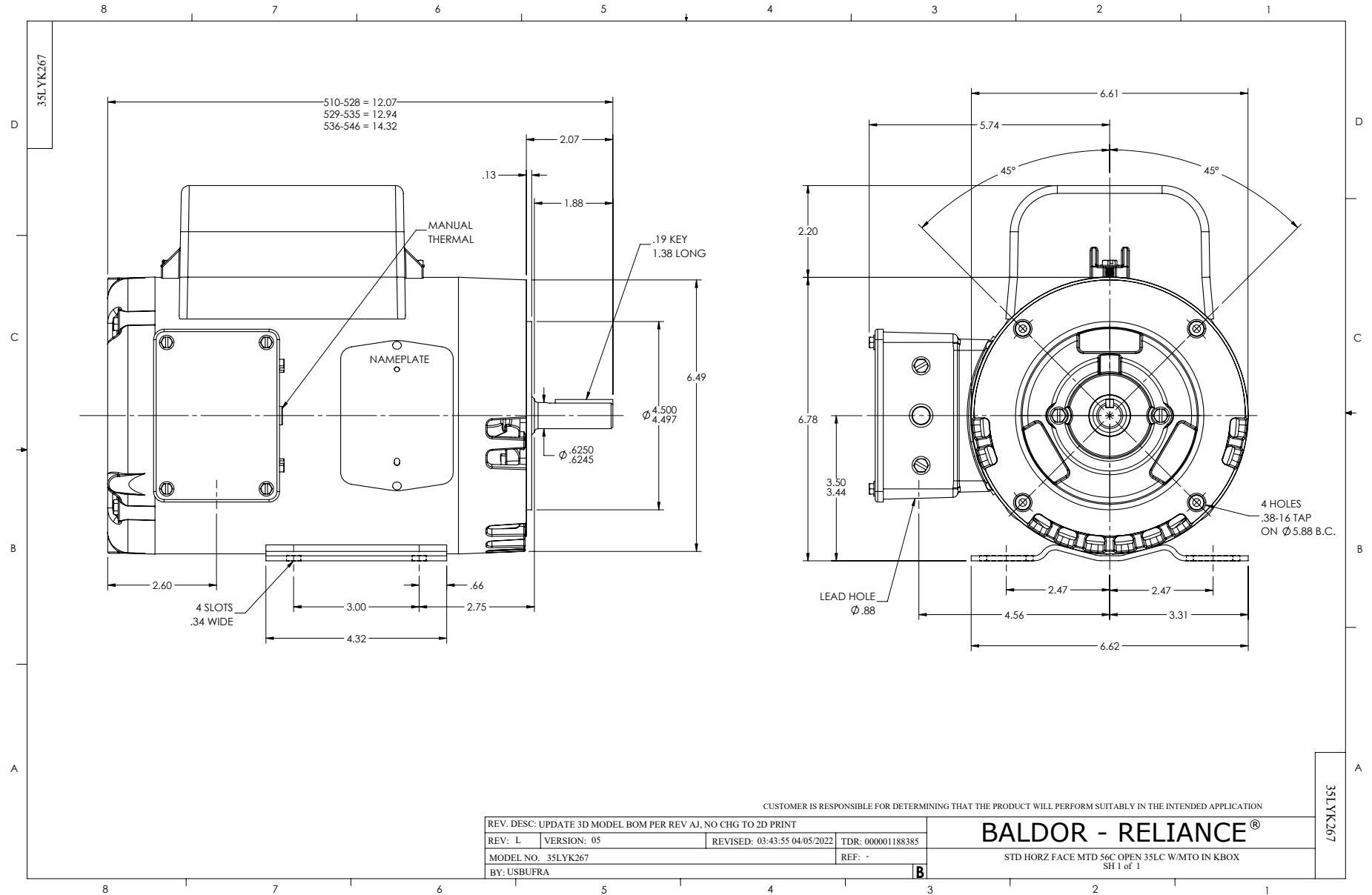
Typical performance - not guaranteed values.

2 HP 1 PH 60 HZ 1725 RPM 230 V 3532LC

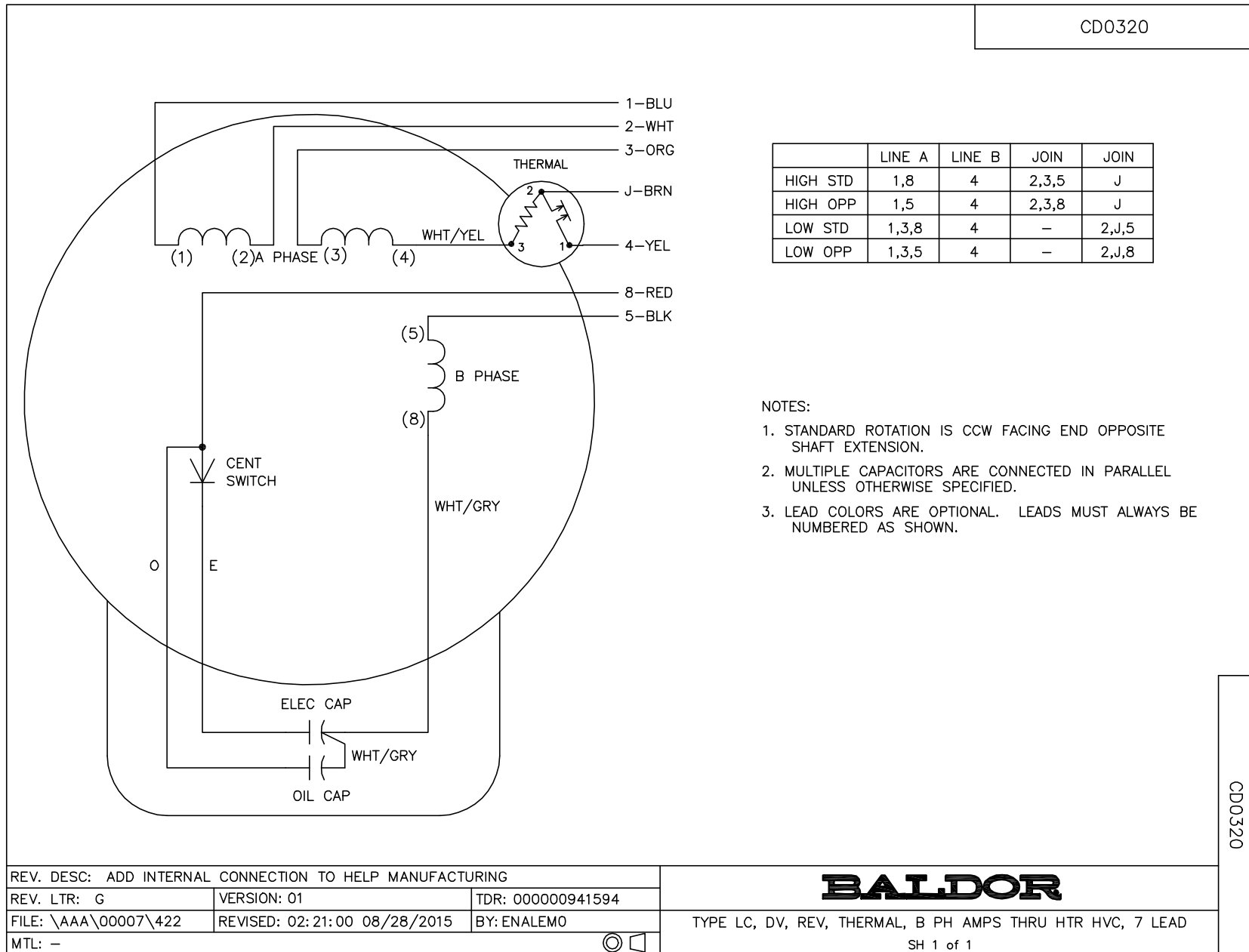
TORQUES (LB-FT): PO=13 PU=12.5 LR=15.5 LRA=60



4/2/2025 ACPERF, record # 61266



CD0320



	LINE A	LINE B	JOIN	JOIN
HIGH STD	1,8	4	2,3,5	J
HIGH OPP	1,5	4	2,3,8	J
LOW STD	1,3,8	4	-	2,J,5
LOW OPP	1,3,5	4	-	2,J,8

NOTES:

1. STANDARD ROTATION IS CCW FACING END OPPOSITE SHAFT EXTENSION.
2. MULTIPLE CAPACITORS ARE CONNECTED IN PARALLEL UNLESS OTHERWISE SPECIFIED.
3. LEAD COLORS ARE OPTIONAL. LEADS MUST ALWAYS BE NUMBERED AS SHOWN.

CD0320

REV. DESC: ADD INTERNAL CONNECTION TO HELP MANUFACTURING		
REV. LTR: G	VERSION: 01	TDR: 00000941594
FILE: \AAA\00007\422	REVISED: 02:21:00 08/28/2015	BY: ENALEMO
MTL: -		© □

BALDOR

TYPE LC, DV, REV, THERMAL, B PH AMPS THRU HTR HVC, 7 LEAD
SH 1 of 1