

BALDOR • RELIANCE

Customer information packet

35T970Y771

3HP, 3450RPM, 1PH, 60HZ, 56C, 3532LC, OPEN, F1

Class -

Division - Not Applicable

Specifications

Enclosure	ODP
Frame	56C
Frame Material	Steel
Frequency	60.00 Hz
Haz Area Division	Not Applicable
Output @ Frequency	3.000 HP @ 60 HZ
Phase	1
Synchronous Speed @ Frequency	3600 RPM @ 60 HZ
Voltage @ Frequency	230.0 V @ 60 HZ
Agency Approvals	CSA UR
Ambient Temperature	40 °C
Auxillary Box	No Auxillary Box
Auxillary Box Lead Termination	None
Base Indicator	Rigid
Bearing Grease Type	Polyrex EM (-20F +300F)
Blower	None
Current @ Voltage	12.500 A @ 230.0 V 13.700 A @ 208.0 V
Design Code	L
Drip Cover	No Drip Cover
Duty Rating	CONT
Efficiency @ 100% Load	78.0 %
Electrically Isolated Bearing	Not Electrically Isolated
Feedback Device	NO FEEDBACK
Front Face Code	Standard
Front Shaft Indicator	None
Heater Indicator	No Heater
High Voltage Full Load Amps	12.5 a
Insulation Class	B
Inverter Code	Not Inverter
KVA Code	G

Part detail

Revision	T
Type	AC
Mech. spec.	35T970
Base	
Status	NLA/A
Elec. spec.	35WGY771
Layout	35LYT970
Eff. date	04-10-2015
CD Diagram	CD0002A02
Poles	02
Leads	2#14 A PH,3#18 B&J
Proprietary	False
Created date	06-22-2007

Lifting Lugs	No Lifting Lugs
Locked Bearing Indicator	Locked Bearing
Motor Lead Exit	Ko Box
Motor Lead Quantity/Wire Size	2 @ 14 AWG, A PH
Motor Lead Termination	Flying Leads
Motor Standards	NEMA
Motor Type	3532LC
Mounting Arrangement	F1
Number of Poles	2
Overall Length	12.94 IN
Power Factor	95
Product Family	General Purpose
Pulley End Bearing Type	Ball
Pulley Face Code	C-Face
Pulley Shaft Indicator	Standard
Rodent Screen	None
RoHS Status	ROHS COMPLIANT
Service Factor	1.15
Shaft Diameter	0.625 IN
Shaft Extension Location	Pulley End
Shaft Ground Indicator	No Shaft Grounding
Shaft Rotation	Reversible
Shaft Slinger Indicator	No Slinger
Speed	3450 rpm
Speed Code	Single Speed
Starting Method	Direct on line
Thermal Device - Bearing	None
Thermal Device - Winding	Do Not Use
Vibration Sensor Indicator	No Vibration Sensor
Winding Thermal 1	Manual Thermal Overload
Winding Thermal 1 Location	KO
Winding Thermal 2	None

Nameplate

NP1257L									
CAT.NO.									
SPEC.	35T970Y771								
HP	3								
VOLTS	230								
AMP	12.5								
RPM	3450								
FRAME	56C			HZ	60		PH	1	
SER.F.	1.15	CODE	G	DES	L	CL	B		
NEMA-NOM-EFF	78	PF	95						
RATING	40C AMB-CONT								
CC									
DE	6205	ODE	6203						
ENCL	OPEN	SN							

Parts list

Part number	Description	Quantity
SA111042	SA 35T970Y771	1.000 ea
RA102421	RA 35T970Y771	1.000 ea
OC3035F09SP	CYL OIL CAP 35MFD/370V	1.000 ea
TPBRT41DB	THERMAL 1PH 1.25 MAN 120CWELDED	1.000 ea
EC1216C06SP	ELEC CAP, 216-259 MFD, 250V, 2.06D X 4.	1.000 ea
WD3006A01	RSS-2-103JT 2W 10K RES. METAL OXIDE 5%	1.000 ea
TP5059	GENERIC WELDED THERMAL, 7" LEAD KIT	1.000 ea
NS2512A01	INSULATOR, CONDUIT BOX X	1.000 ea
35CB3006A68	35 CB .50 NPT @ 6:00, 1.25 MTO @ 3:00	1.000 ea
36GS1000SP	GASKET-CONDUIT BOX, .06 THICK #SV-330 LE	1.000 ea
51XB1016A07	10-16 X 7/16 HXWSSLD SERTYB	2.000 ea
11XW1032G06	10-32 X .38, TAPTITE II, HEX WSHR SLTD U	1.000 ea
35EP3209G00	STD FR EP OPEN-203BRG-35L OR M FRAME--LE	1.000 ea
51XW0832A07	8-32 X .44, TAPTITE II, HEX WSHR SLTD SE	2.000 ea
35CB3801	CAPACITOR COVER, CAST	1.000 ea
HA7010	CAPACITOR RETENTION CLAMP	1.000 ea
NS2501A02	INSULATOR, CAPACITOR BOX	1.000 ea
51XB1016A08	10-16X 1/2HXWSSLD SERTYB	2.000 ea
HW5100A03	WAVY WASHER (W1543-017)	1.000 ea
35EP3402C00	STD FACE MTD END PLATE OPEN NEMA 56C 05	1.000 ea
35AD2000	AIR BAFFLE - GALVANNEAL	1.000 ea
15XF0632A06	6-32 X 3/8 PHILL PAN HD TYPE F	4.000 ea
51XN1032A20	10-32 X 1 1/4 HX WS SL SR	2.000 ea
35CB4521	35 LIPPED CB LID (GALV & PHOSPH)	1.000 ea
35GS1030	35 GS FOR CB LID - LEXIDE	1.000 ea
51XW0832A07	8-32 X .44, TAPTITE II, HEX WSHR SLTD SE	4.000 ea
HW2501D13	KEY, 3/16 SQ X 1.375	1.000 ea
HA7000A04	KEY RETAINER 0.625 DIA SHAFTS	1.000 ea
85XU0407S04	4X1/4 U DRIVE PIN STAINLESS	2.000 ea
LB1087	LABEL,MANUAL RESET (ROLL LABEL)	1.000 ea
WD1000A15	3-520132-2 AMP FLAG (4M/RL NON-CANC/NON-	4.000 ea

MJ1000A02	GREASE, POLYREX EM EXXON	0.050 lb
MG1000G27	MED CHARCOAL METALLIC GREY	0.017 ga
SP5181A28	MODEL 35 LC TORQ STAT SWITCH LEAD ASSY	1.000 ea
HA3100A18	THRUBOLT 10-32 X 9.250	4.000 ea
LB1624	WARNING LABEL	1.000 ea
LC0002	CONNECTION LABEL	1.000 ea
NP1257L	ALUM UL CC THERMAL REV MTG	1.000 ea
35PA1066	PKG GRP, PRINT PK1008A06	1.000 ea
LB1417	LABEL CARTON 6X4 PERFORATED BLANK ROLLS	1.000 ea

AC Induction Motor Performance Data

Record # 48076

Typical performance - not guaranteed values

Winding: 35WGY771-R003		Type: 3532LC	Enclosure: OPEN		
Nameplate Data			230 V, 60 Hz: Single Voltage Motor		
Rated Output (HP)	3	Full Load Torque	4.58 LB-FT		
Volts	230	Start Configuration	direct on line		
Full Load Amps	12.5	Breakdown Torque	10.8 LB-FT		
R.P.M.	3450	Pull-up Torque	5.6 LB-FT		
Hz	60 Phase	1	Locked-rotor Torque	7.23 LB-FT	
NEMA Design Code	L	KVA Code	G	Starting Current	73.3 A
Service Factor (S.F.)	1.15		No-load Current	1.77 A	
NEMA Nom. Eff.	78	Power Factor	95	Line-line Res. @ 25°C	0.83226 Ω A Ph 1.5526 Ω B Ph
Rating - Duty	40C AMB-CONT		Temp. Rise @ Rated Load	30°C	
S.F. Amps			Temp. Rise @ S.F. Load	37°C	

Load Characteristics 230 V, 60 Hz, 3 HP

% of Rated Load	25	50	75	100	125	150	S.F.
Power Factor	97	99	99	99	98	98	98
Efficiency	60.4	74.1	77.9	78.1	76.1	71.9	76.9
Speed	3564.4	3534.5	3502.1	3463.4	3413	3349.7	3433
Line amperes	4.06	6.7	9.48	12.7	16.5	21.1	15

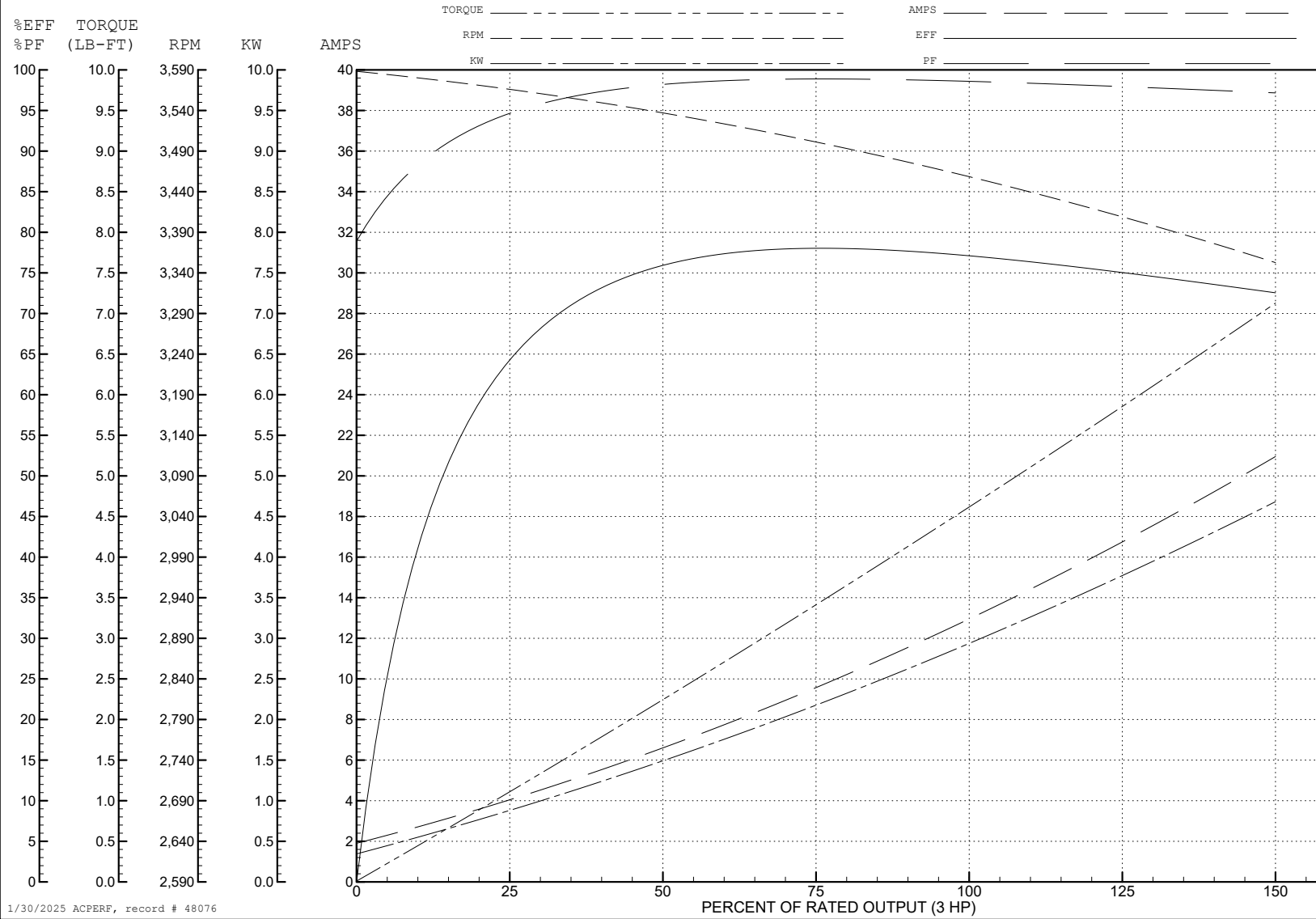
ABB Motors and Mechanical Inc.

WINDING # 35WGY771

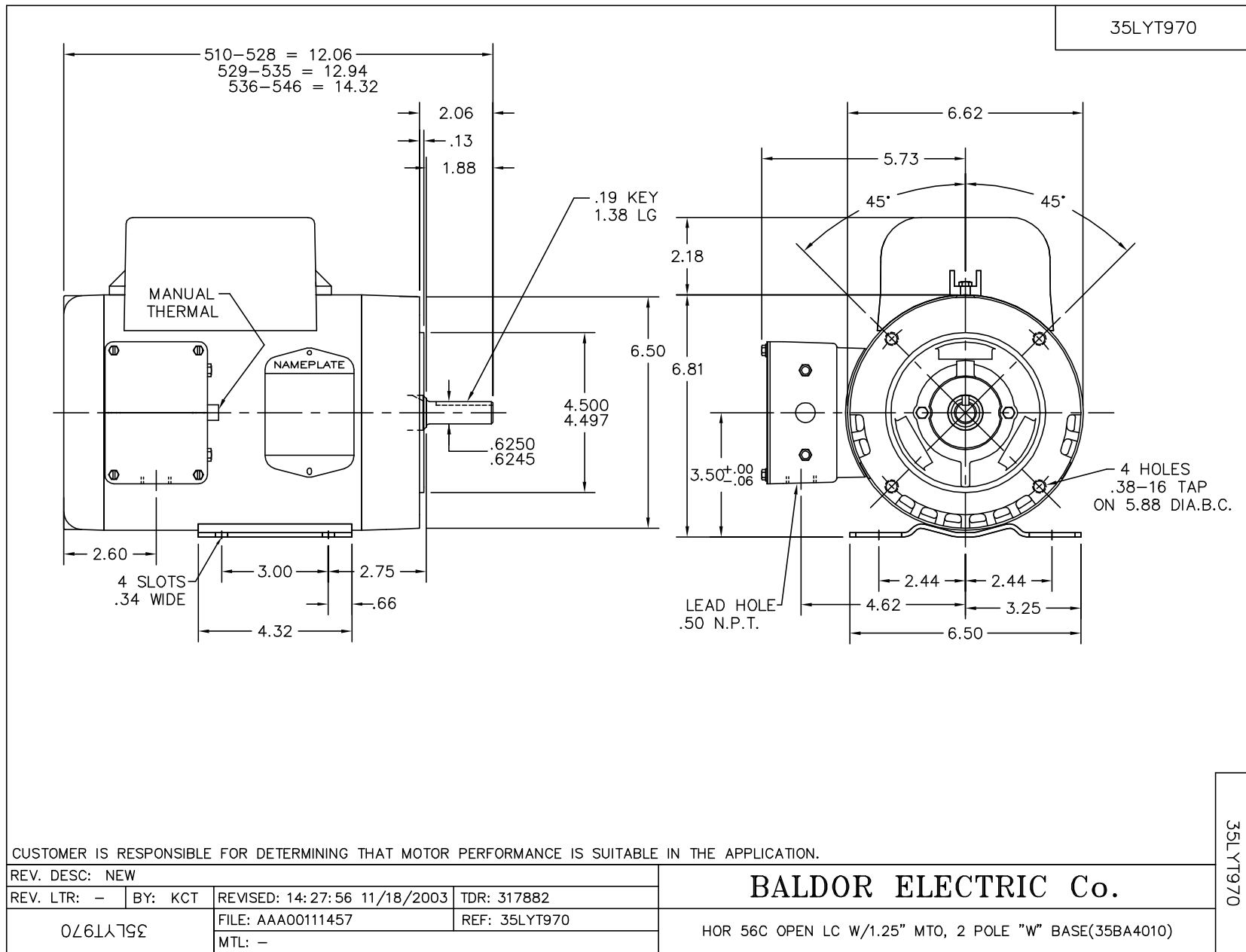
Typical performance - not guaranteed values.

3 HP 1 PH 60 HZ 3450 RPM 230 V 3532LC

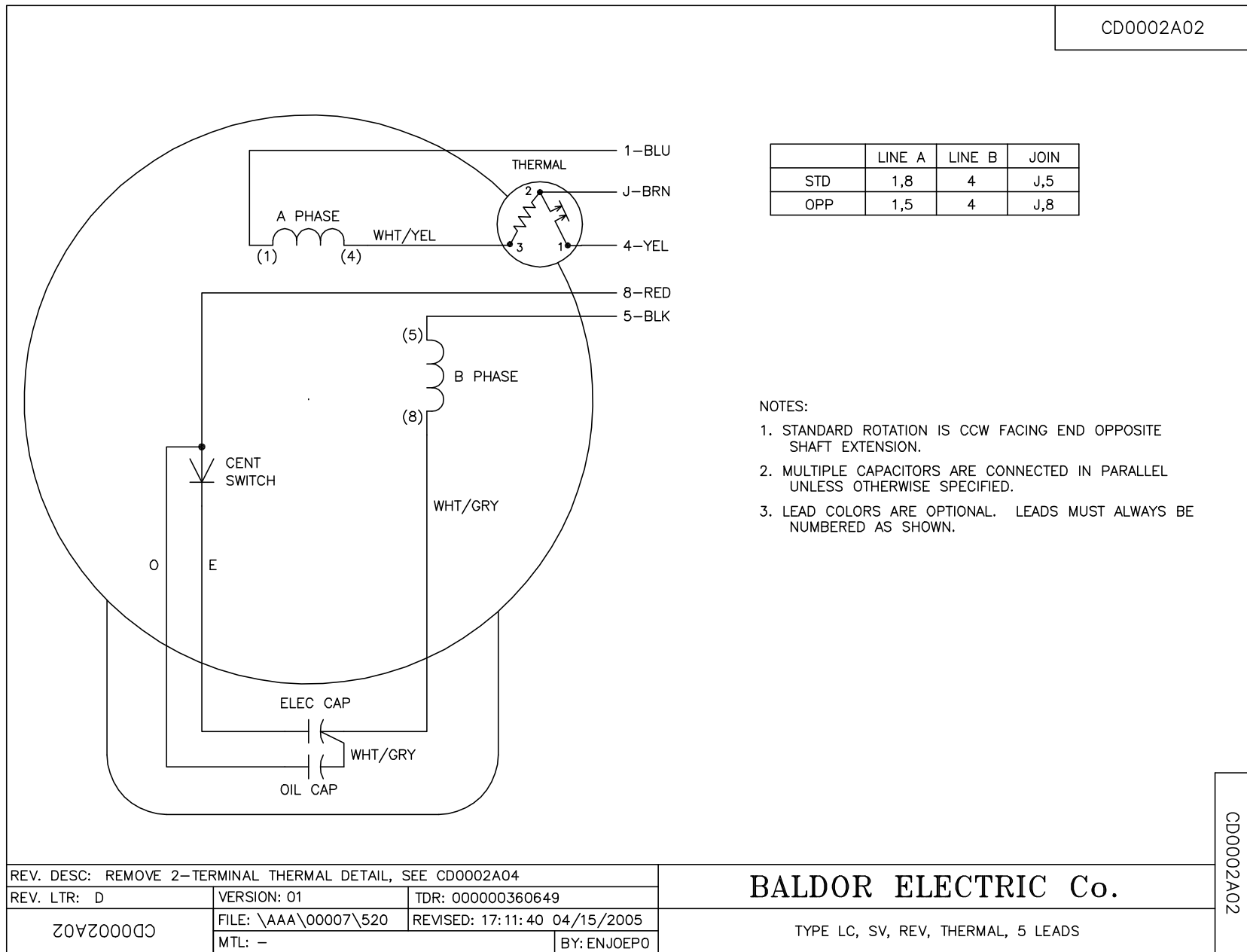
TORQUES (LB-FT): PO=10.8 PU=5.6 LR=7.23 LRA=73.3



1/30/2025 ACPERF, record # 48076



CD0002A02



REV. DESC: REMOVE 2-TERMINAL THERMAL DETAIL, SEE CD0002A04		
REV. LTR: D	VERSION: 01	TDR: 000000360649
CD0002A02	FILE: \AAA\00007\520	REVISED: 17:11:40 04/15/2005
	MTL: -	BY: ENJOEPO

BALDOR ELECTRIC Co.

TYPE LC, SV, REV, THERMAL, 5 LEADS

CD0002A02