

BALDOR • RELIANCE

Customer information packet

RL1209A

.5HP, 2850//3450RPM, 1PH, 50//60HZ, 48, 3420L

Class - None

Division - Not Applicable

Specifications

Enclosure	OPEN
Frame	48
Frame Material	Steel
Frequency	50.00 Hz 60.00 Hz
Haz Area Class and Group	None
Haz Area Division	Not Applicable
Motor Letter Type	Cap Start, Induction Run
Output @ Frequency	.500 HP @ 60 HZ .500 HP @ 50 HZ
Phase	1
Synchronous Speed @ Frequency	3000 RPM @ 50 HZ
Voltage @ Frequency	230.0 V @ 60 HZ 110.0 V @ 50 HZ 115.0 V @ 60 HZ 220.0 V @ 50 HZ
Agency Approvals	UR CSA
Ambient Temperature	40 °C
Auxillary Box	No Auxillary Box
Auxillary Box Lead Termination	None
Base Indicator	Resilient
Bearing Grease Type	Polyrex EM (-20F +300F)
Blower	None
Current @ Voltage	3.000 A @ 230.0 V 3.300 A @ 220.0 V 6.000 A @ 115.0 V 6.600 A @ 110.0 V
Design Code	N
Drip Cover	No Drip Cover
Duty Rating	CONT
Efficiency @ 100% Load	74.0 %

Part detail

Revision	F
Type	AC
Mech. spec.	34K014
Base	
Status	PRD/A
Elec. spec.	34WGX041
Layout	34LYK014
Eff. date	10-25-2024
CD Diagram	CD0008
Poles	02
Leads	6#18,1#16 #4TH
Proprietary	False
Created date	01-23-2017

Electrically Isolated Bearing	Not Electrically Isolated
Feedback Device	NO FEEDBACK
Front Face Code	Resilient Mount
Front Shaft Indicator	None
Heater Indicator	No Heater
High Voltage Full Load Amps	3.0 a
Insulation Class	B
Inverter Code	Not Inverter
KVA Code	J
Lifting Lugs	No Lifting Lugs
Locked Bearing Indicator	No Locked Bearing
Motor Lead Exit	Terminal Panel Or Lead Hole
Motor Lead Quantity/Wire Size	6 @ 18 AWG
Motor Lead Termination	None
Motor Standards	NEMA
Motor Type	3420L
Mounting Arrangement	F1
Number of Poles	2
Overall Length	10.96 IN
Power Factor	69
Product Family	General Purpose
Pulley End Bearing Type	Ball
Pulley Face Code	Resilient Mount
Pulley Shaft Indicator	Standard
Rodent Screen	None
RoHS Status	ROHS COMPLIANT
Service Factor	1.25
Shaft Diameter	0.500 IN
Shaft Extension Location	Pulley End
Shaft Ground Indicator	No Shaft Grounding
Shaft Rotation	Reversible
Shaft Slinger Indicator	No Slinger
Speed	2850 rpm 3450 rpm

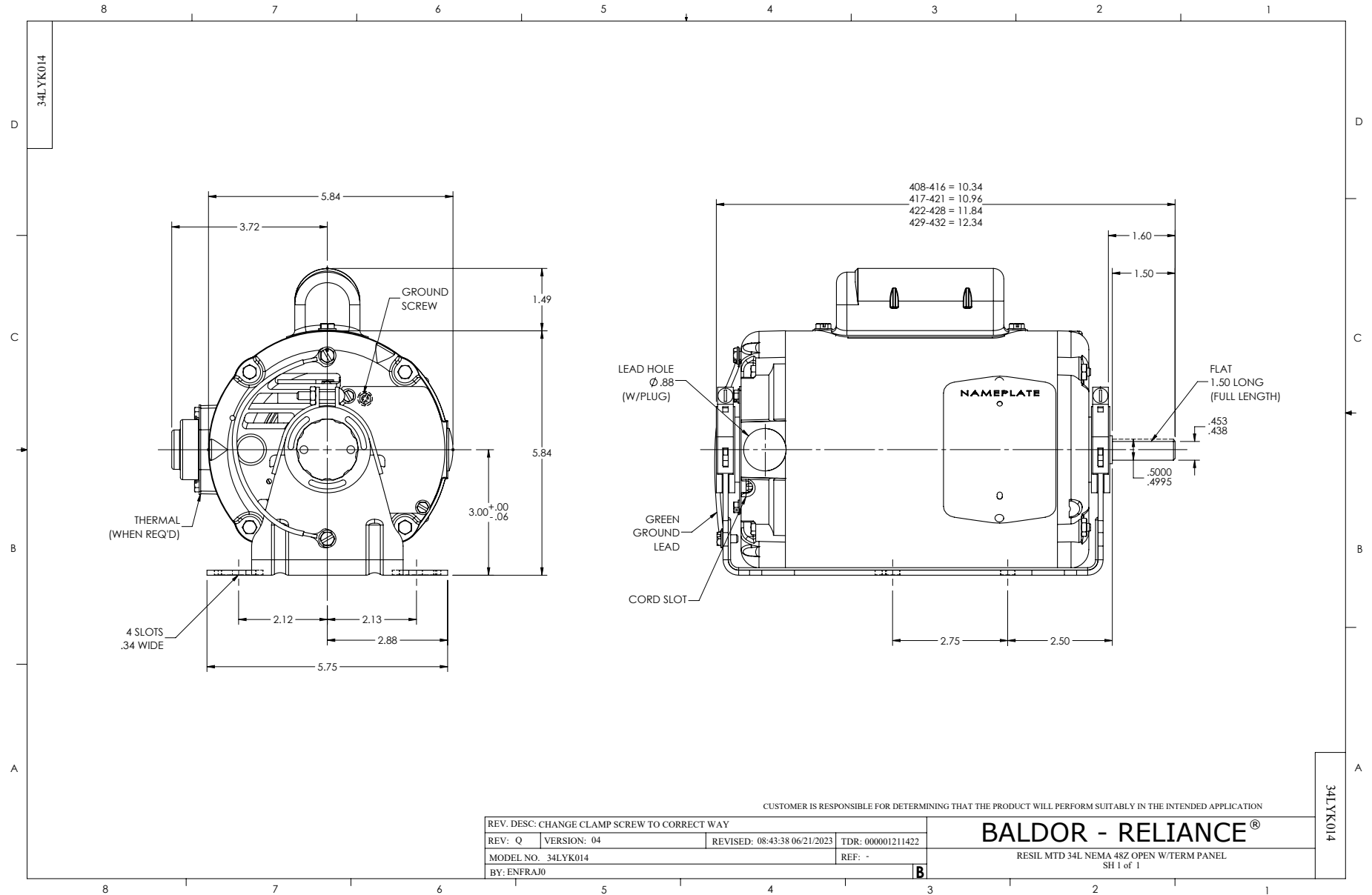
Speed Code	Single Speed
Starting Method	Direct on line
Thermal Device - Bearing	None
Thermal Device - Winding	None
Vibration Sensor Indicator	No Vibration Sensor
Winding Thermal 1	Automatic Thermal Overload
Winding Thermal 1 Location	SB
Winding Thermal 2	None

Nameplate

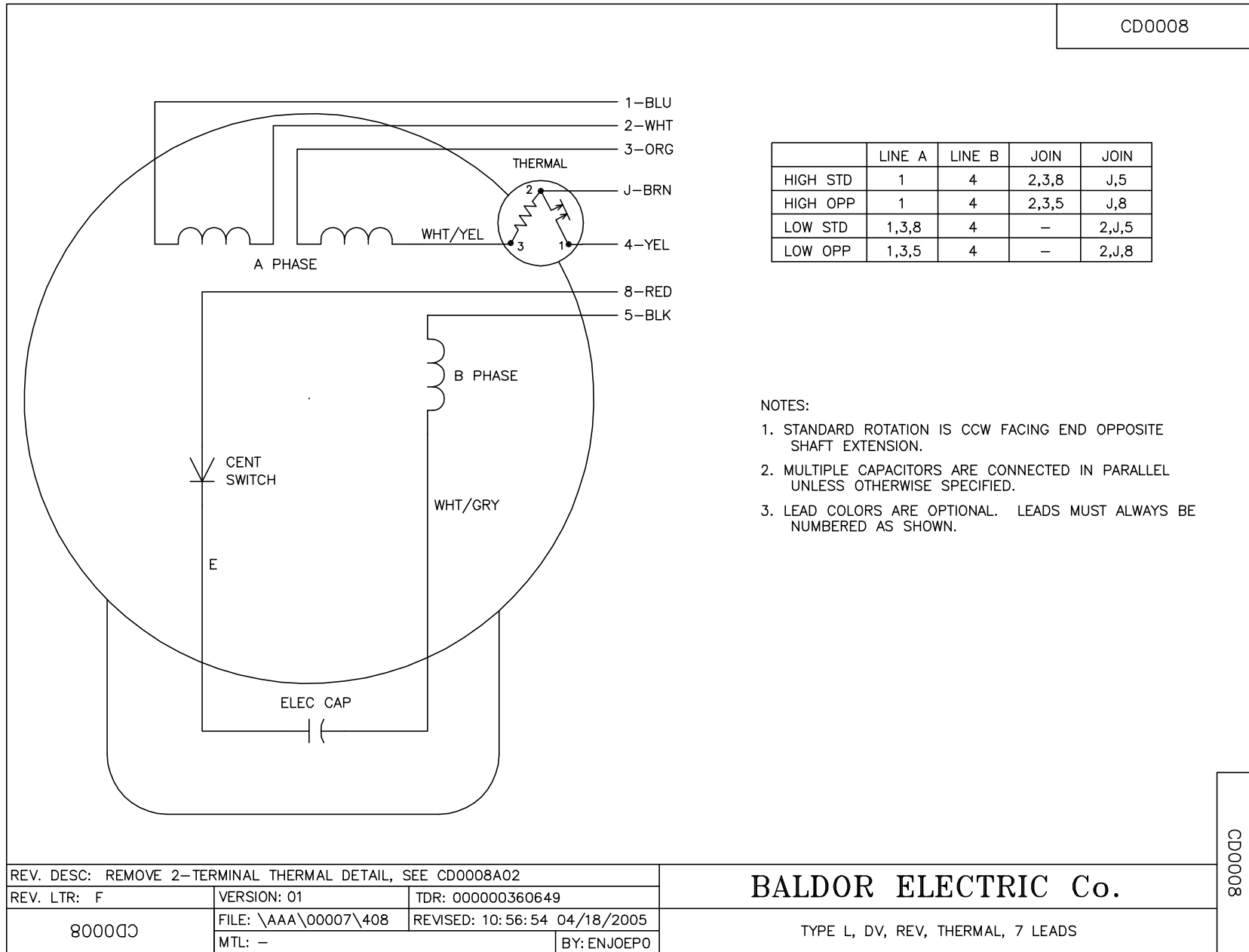
NP1257L									
CAT.NO.	RL1209A								
SPEC.	34K014X041G3								
HP	.5								
VOLTS	110/220//115/230								
AMP	6.6/3.3//6/3								
RPM	2850//3450								
FRAME	48			HZ	50//60	PH	1		
SER.F.	1.25	CODE	J	DES	N	CL	B		
NEMA-NOM-EFF	74	PF	69						
RATING	40C AMB-CONT								
CC									
DE	6203	ODE	6203						
ENCL	OPEN	SN							
	SFA 8/4//7/3.5								

Parts list

Part number	Description	Quantity
SA333011	SA 34K014X041G3	1.000 ea
RA321121	RA 34K014X041G3	1.000 ea
EC1189A02SP	61B2D120189NNBA ELEC CAP, 189-227MFD, 12	1.000 ea
11XW0832G06	#8-32 X 3/8, TAPTITE II, HEX WSHR SLTD	1.000 ea
LD5000A52	LEAD ASSY W/INTERNAL STAR RING TERMINALS	1.000 ea
11XW1032G06	10-32 X .38, TAPTITE II, HEX WSHR SLTD U	2.000 ea
51XW0832A07	8-32 X .44, TAPTITE II, HEX WSHR SLTD SE	3.000 ea
34EP3202A01	FR ENDPLATE, MACH	1.000 ea
MG1050G01	CELEROL MEDIUM CHARCOAL METALLIC GRAY	0.014 ga
RM1000A03	CUSHION RING, MDL 17-33-34	1.000 ea
HA6004A01A	CLAMP CUSHION RING ASSY	1.000 ea
WD4100A01	DP-875 HEYCO PLUG OR 62MP0875 MICRO PLAS	1.000 ea
34CB4800SP	CAPACITOR COVER, STAMPED PRIMED	1.000 ea
51XB1016A05	10-16X5/16HX WA SL SR TYB (F/S)	2.000 ea
HW5100A03	WAVY WASHER (W1543-017)	1.000 ea
34EP3203A01	PU ENDPLATE, MACH	1.000 ea
RM1000A03	CUSHION RING, MDL 17-33-34	1.000 ea
HA6004A01A	CLAMP CUSHION RING ASSY	1.000 ea
XY1032A02	10-32 HEX NUT DIRECTIONAL SERRATION	4.000 ea
34CB4501SP	TERMINAL BOX LID, STAMPED X (PLATED)	1.000 ea
51XW0832A07	8-32 X .44, TAPTITE II, HEX WSHR SLTD SE	2.000 ea
85XU0407S04	4X1/4 U DRIVE PIN STAINLESS	2.000 ea
34BA4001F01	RESILIENT BASE, 417-421	1.000 ea
SP5075A01	34 TERM PANEL SWITCH, 8-RED, E-BLK	1.000 ea
HA3100A44	THRUBOLT 10-32 X 8.000	4.000 ea
MN416A01	TAG-INSTAL-MAINT no wire (2500bx)4/22	1.000 ea
LB1118	LABEL,WARNING (ROLL LABEL)	1.000 ea
LC0008	CONNECTION LABEL	1.000 ea
NP1257L	ALUM UL CC THERMAL REV MTG	1.000 ea
34PA1002	PKG GRP, PRINT PK1001A01	1.000 ea



CD0008



NOTES:

1. STANDARD ROTATION IS CCW FACING END OPPOSITE SHAFT EXTENSION.
2. MULTIPLE CAPACITORS ARE CONNECTED IN PARALLEL UNLESS OTHERWISE SPECIFIED.
3. LEAD COLORS ARE OPTIONAL. LEADS MUST ALWAYS BE NUMBERED AS SHOWN.

REV. DESC: REMOVE 2-TERMINAL THERMAL DETAIL, SEE CD0008A02		
REV. LTR: F	VERSION: 01	TDR: 000000360649
800000	FILE: \AAA\00007\408	REVISED: 10:56:54 04/18/2005
	MTL: -	BY: ENJOEPO

BALDOR ELECTRIC Co.

TYPE L, DV, REV, THERMAL, 7 LEADS

CD0008