

BALDOR • RELIANCE

Customer information packet

UCM713

7.5-10HP, 3450RPM, 3PH, 60HZ, 184TZ, 3646M

Class - None

Division - Not Applicable

Copyright © All product information within this document is subject to ABB Motors and Mechanical Inc. copyright © protection, unless otherwise noted.

11/25/2024 11:47:53 AM

Specifications

Enclosure	OPEN
Frame	184TZ
Frame Material	Steel
Frequency	60.00 Hz
Haz Area Class and Group	None
Haz Area Division	Not Applicable
Motor Letter Type	Three Phase
Output @ Frequency	10.000 HP @ 60 HZ
Phase	3
Synchronous Speed @ Frequency	3600 RPM @ 60 HZ
Voltage @ Frequency	460.0 V @ 60 HZ 230.0 V @ 60 HZ 208.0 V @ 60 HZ
Agency Approvals	CSA UR
Ambient Temperature	40 °C
Auxillary Box	No Auxillary Box
Auxillary Box Lead Termination	None
Base Indicator	Rigid
Bearing Grease Type	Polyrex EM (-20F +300F)
Blower	None
Current @ Voltage	25.000 A @ 208.0 V 24.000 A @ 230.0 V 12.000 A @ 460.0 V
Design Code	B
Drip Cover	No Drip Cover
Duty Rating	CONT
Efficiency @ 100% Load	84.0 %
Electrically Isolated Bearing	Not Electrically Isolated
Feedback Device	NO FEEDBACK
Front Face Code	Standard
Front Shaft Indicator	None

Part detail

Revision	AR
Type	AC
Mech. spec.	36F551
Base	
Status	PRD/A
Elec. spec.	36WG0738
Layout	36LYF551
Eff. date	03-18-2024
CD Diagram	CD0005
Poles	02
Leads	9#14 30" LG Y
Proprietary	False
Created date	01-01-0001

Heater Indicator	No Heater
High Voltage Full Load Amps	12.0 a
Insulation Class	F
Inverter Code	Not Inverter
KVA Code	J
Lifting Lugs	Standard Lifting Lugs
Locked Bearing Indicator	Locked Bearing
Motor Lead Exit	Pipe Or Pipe Adaptor
Motor Lead Quantity/Wire Size	9 @ 14 AWG
Motor Lead Termination	Flying Leads
Motor Standards	NEMA
Motor Type	3646M
Mounting Arrangement	F1
Number of Poles	2
Overall Length	16.88 IN
Power Factor	92
Product Family	General Purpose
Pulley End Bearing Type	Ball
Pulley Face Code	Standard
Pulley Shaft Indicator	Tapped & Key
Rodent Screen	None
Service Factor	1.00
Shaft Diameter	1.125 IN
Shaft Extension Location	Pulley End
Shaft Ground Indicator	No Shaft Grounding
Shaft Rotation	Reversible
Shaft Slinger Indicator	No Slinger
Speed	3450 rpm
Speed Code	Single Speed
Starting Method	Direct on line
Thermal Device - Bearing	None
Thermal Device - Winding	Normally Closed Thermostat
Vibration Sensor Indicator	No Vibration Sensor
Winding Thermal 1	None

Winding Thermal 2

None

Nameplate

NP1279L							
CAT.NO.	UCM713						
SPEC.	36F551-738						
HP	7.5-10 AIR OVER						
VOLTS	208-230/460						
AMP	25-24/12						
RPM	3450						
FRAME	184TZ	HZ	60	PH	3		
SER.F.	1.00	CODE	J	DES	B	CL	F
NEMA-NOM-EFF	84	PF	92				
RATING	40C AMB-CONT						
CC	USABLE AT 208V						N/A
DE	6206	ODE	6205				
ENCL	OPEN	SN					

NP1263L

CAT.NO.	UCM713						
SPEC.	36F551-738						
HP	7.5-10 AIR OVER						
VOLTS	208-230/460						
AMP	25-24/12						
RPM	3450						
FRAME	184TZ		HZ	60		PH	3
SER.F.	1.00	CODE	J	DES	B	CL	F
NEMA-NOM-EFF	84	PF	92				
RATING	40C AMB-CONT						
CC							
DE	6206	ODE	6205				
ENCL	OPEN	SN					

Parts list

Part number	Description	Quantity
SA035086	SA 36F551-738	1.000 ea
RA031113	RA 36F551-738	1.000 ea
HA6011A01	ADAPTOR, MACH	1.000 ea
51XF2520A08	SCREW, HEX SER SLT HD, ZN 1/4-20 X .50 L	2.000 ea
11XW1032G06	10-32 X .38, TAPTITE II, HEX WSHR SLTD U	1.000 ea
HW3001B01	BRASS CUP WASHER, FOR #10 SCREW	1.000 ea
36EP3204C00	MASTER ODE,205 BRG,GRSR,GRSR	1.000 ea
HW4500A19	1/4-28X1/4 SLOTTED PLUG F/S	2.000 ea
HA1103A08	RODENT SCREEN, 36 FRAME, OPEN, FRONT END	1.000 ea
51XW1032A06	10-32 X .38, TAPTITE II, HEX WSHR SLTD S	4.000 ea
HW1000A10	#10 FLAT WASHER (SAE)	4.000 ea
HW5100A05	WVY WSHR F/205 & 304 BRGS	1.000 ea
36EP3205E00	MASTER DE,206 BRG,1.438SH,GRSR,GRSR,LCK	1.000 ea
HW4500A19	1/4-28X1/4 SLOTTED PLUG F/S	2.000 ea
HA1103A10	RODENT SCREEN, 36 FRAME, OPEN, PULLEY EN	1.000 ea
51XW1032A06	10-32 X .38, TAPTITE II, HEX WSHR SLTD S	4.000 ea
HW1000A10	#10 FLAT WASHER (SAE)	4.000 ea
10XN2520A20	1/4-20X 1 1/4 HEX HD X	2.000 ea
HW1001A25	LOCKWASHER 1/4, ZINC PLT .493 OD, .255 I	2.000 ea
XY2520A12	1/4-20 HEX NUT, DIRECTIONAL SERRATIONS	4.000 ea
HW2501E18	KEY, 1/4 SQ X 2.000	1.000 ea
HA7000A02	KEY RETAINER RING, 1 1/8 DIA, 1 3/8 DIA	1.000 ea
85XU0407S04	4X1/4 U DRIVE PIN STAINLESS	2.000 ea
HW3200A01	3/8-16X3/4 EYEBOLT WELDED F/S	1.000 ea
MJ1000A02	GREASE, POLYREX EM EXXON	0.050 lb
MG1025C02	WILKOFASG, 787.105, TAN	0.022 ga
LB1001	LABEL, GREASE-EXXON POLYREX EM	1.000 ea
LD5000A45	LEAD ASSY, ML1400DF10 W/#10 RING 36"	1.000 ea
HA3101A28	THRUBOLT 1/4-20 X 12.500 OHIO ROD	4.000 ea
LC0145B01	CONNECTION LABEL	1.000 ea
NP1279L	ALUM FARM DUTY UL CSA CC	1.000 ea

NP1263L	AUX, GP, ALUM, CC, LASER ETCHED	1.000 ea
36PA1000	PKG GRP, PRINT PK1016A06	1.000 ea
MN416A01	TAG-INSTAL-MAINT no wire (2500bx)4/22	1.000 ea
LB1624	COMBINED WARNING LABEL, ISO/ANSI PICTOGR	1.000 ea
FE-0000004	ZRTG FE ASSEMBLY	1.000 ea
PE-0000004	ZRTG PE ASSEMBLY	1.000 ea

AC Induction Motor Performance Data

Record # 61460

Typical performance - not guaranteed values

Winding: 36WG0738-R004			Type: 3646M			Enclosure: OPAO		
Nameplate Data				460 V, 60 Hz: High Voltage Connection				
Rated Output (HP)	10 AIR OVER		Full Load Torque	15 LB-FT				
Volts	208-230/460		Start Configuration	direct on line				
Full Load Amps	25-24/12		Breakdown Torque	58 LB-FT				
R.P.M.	3450		Pull-up Torque	50 LB-FT				
Hz	60	Phase	3	Locked-rotor Torque	56 LB-FT			
NEMA Design Code	B		KVA Code	J	Starting Current	100 A		
Service Factor (S.F.)	1		No-load Current	3 A				
NEMA Nom. Eff.	84	Power Factor	92	Line-line Res. @ 25°C	1.41 Ω			
Rating - Duty	40C AMB-CONT		Temp. Rise @ Rated Load					
			Locked-rotor Power Factor	48.2				
			Rotor inertia	0.207 LB-FT ²				

Load Characteristics 460 V, 60 Hz, 10 HP

% of Rated Load	25	50	75	100	125	150
Power Factor	67	86	92	94	93	93
Efficiency	75.7	86.3	84	82.8	82.5	79.8
Speed	3567	3541	3511	3475	3440	3398
Line amperes	4.7	6.4	9.1	12	15	18.3

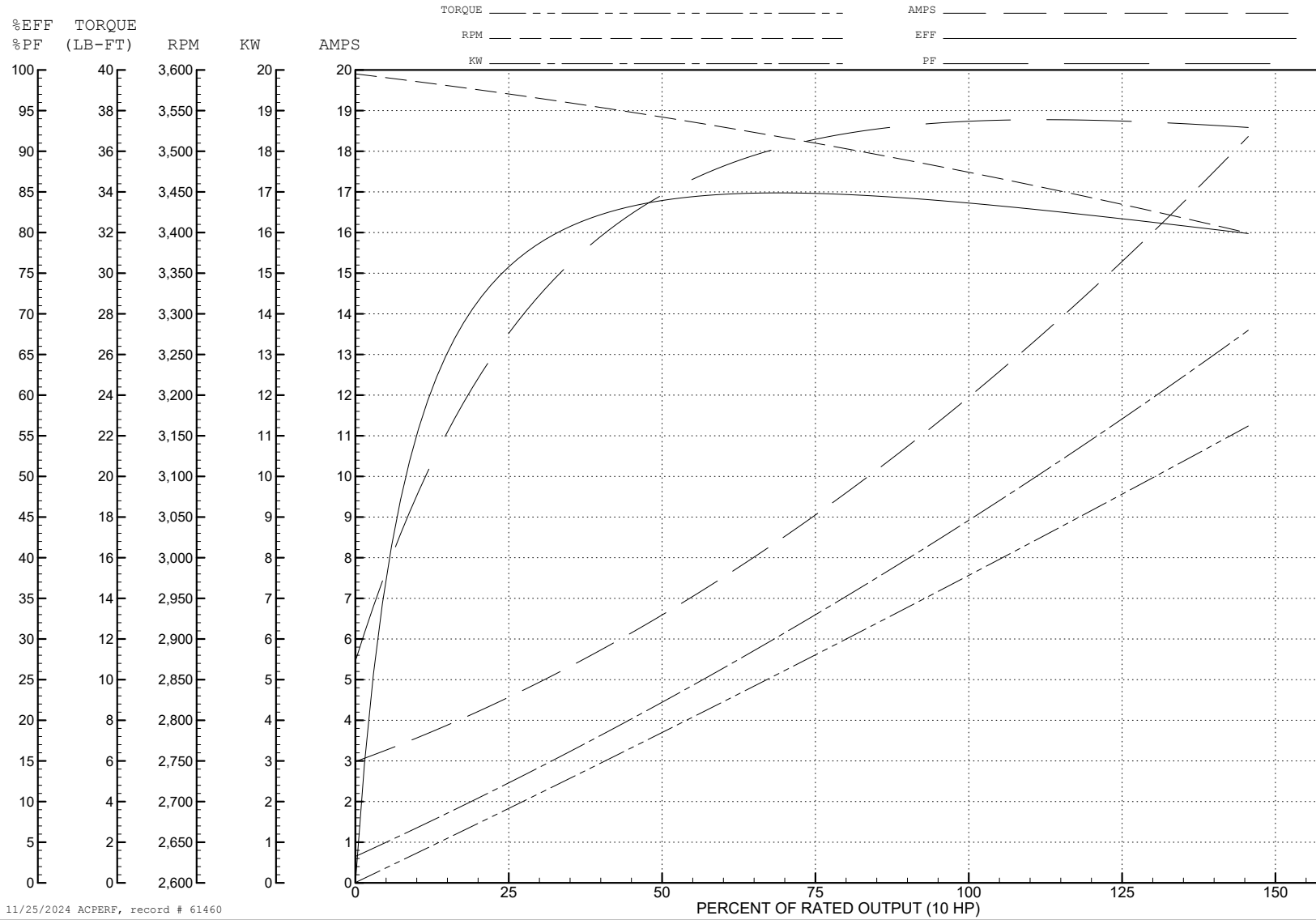
ABB Motors and Mechanical Inc.

WINDING # 36WG0738

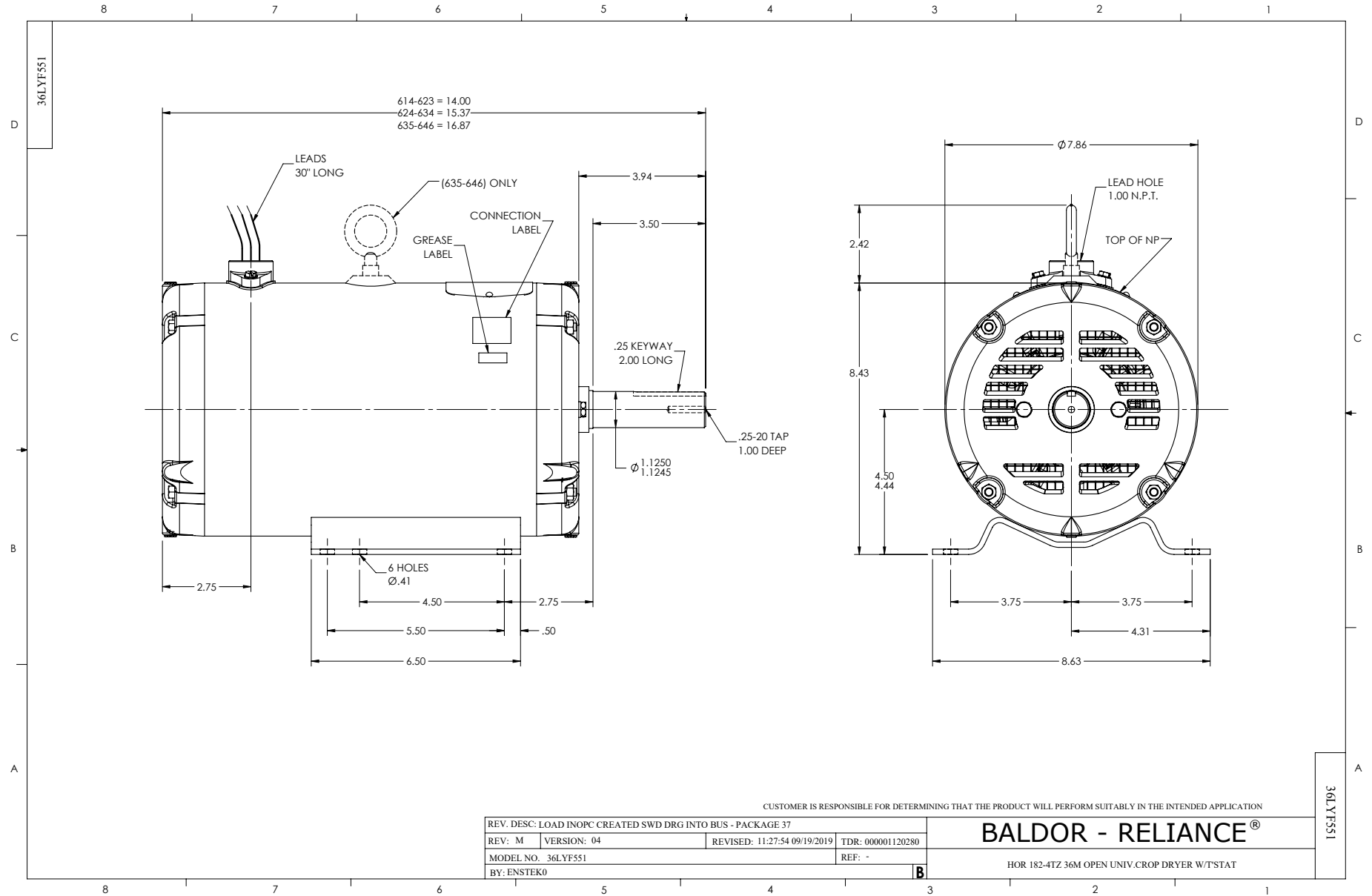
Typical performance - not guaranteed values.

10 HP 3 PH 60 HZ 3450 RPM 460 V 3646M

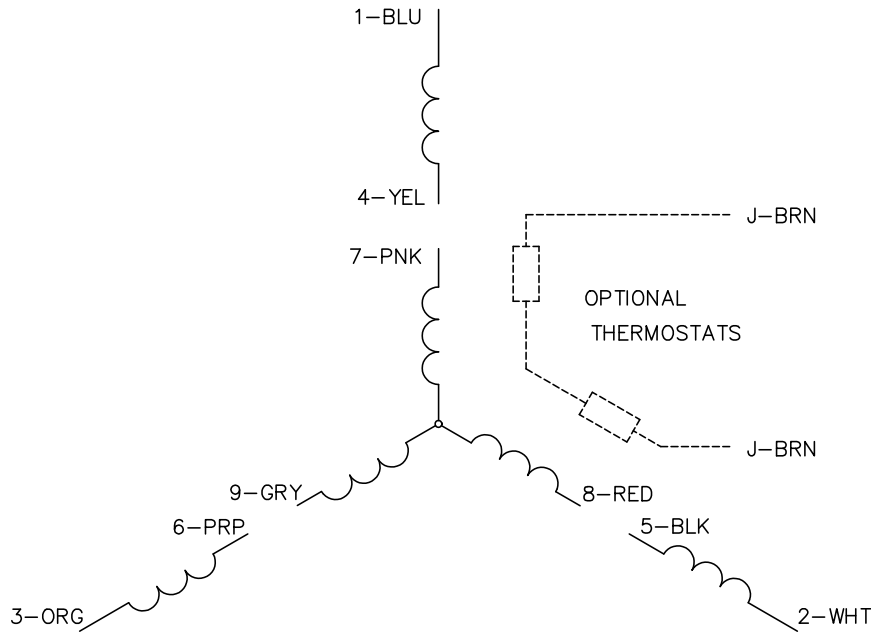
TORQUES (LB-FT): PO=58 PU=50 LR=56 LRA=100



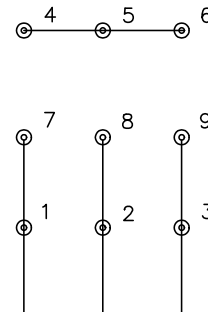
11/25/2024 ACPERF, record # 61460



CD0005

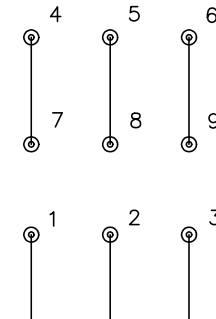


LOW VOLTAGE
(2Y)



LINE

HIGH VOLTAGE
(1Y)



LINE

NOTES:

1. INTERCHANGE ANY TWO LINE LEADS TO REVERSE ROTATION.
2. OPTIONAL THERMOSTATS ARE PROVIDED WHEN SPECIFIED.
3. ACTUAL NUMBER OF INTERNAL PARALLEL CIRCUITS MAY BE A MULTIPLE OF THOSE SHOWN ABOVE.
4. LEAD COLORS ARE OPTIONAL. LEADS MUST ALWAYS BE NUMBERED AS SHOWN.

REV. DESC: REVISE TO SHOW OPTIONAL COLORS			
REV. LTR: E	BY: JLP	REVISED: 01/19/99 10:15	TDR: 0171435
S00000		FILE: AAA00005140	MDL: -
		MTL: -	

BALDOR ELECTRIC Co.

3PH, DV, 9 LEADS

CD0005