

BALDOR • RELIANCE

Customer information packet

VEJMM3211T

3HP, 1765RPM, 3PH, 60HZ, 182JM, 3630M, ODP, F1

Class - None

Division - Not Applicable

Specifications

| | |
|--------------------------------|---|
| Enclosure | ODP |
| Frame | 182JM |
| Frame Material | Steel |
| Frequency | 60.00 Hz |
| Haz Area Class and Group | None |
| Haz Area Division | Not Applicable |
| Motor Letter Type | Three Phase |
| Output @ Frequency | 3.000 HP @ 60 HZ |
| Phase | 3 |
| Synchronous Speed @ Frequency | 1800 RPM @ 60 HZ |
| Voltage @ Frequency | 460.0 V @ 60 HZ 230.0 V @ 60 HZ |
| Agency Approvals | CSA CSA EEV UR |
| Ambient Temperature | 40 °C |
| Auxillary Box | No Auxillary Box |
| Auxillary Box Lead Termination | None |
| Base Indicator | No Mounting |
| Bearing Grease Type | Polyrex EM (-20F +300F) |
| Blower | None |
| Current @ Voltage | 8.400 A @ 230.0 V 8.500 A @ 208.0 V 4.200 A @ 460.0 V |
| Design Code | B |
| Drip Cover | Drip Cover |
| Duty Rating | CONT |
| Efficiency @ 100% Load | 89.5 % |
| Electrically Isolated Bearing | Not Electrically Isolated |
| Feedback Device | NO FEEDBACK |
| Front Face Code | Standard |
| Front Shaft Indicator | None |

Part detail

| | |
|--------------|------------|
| Revision | G |
| Type | AC |
| Mech. spec. | 36Q830 |
| Base | |
| Status | PRD/A |
| Elec. spec. | 36WGS658 |
| Layout | 36LYQ830 |
| Eff. date | 06-11-2024 |
| CD Diagram | CD0005 |
| Poles | 04 |
| Leads | 9#16 |
| Proprietary | False |
| Created date | 07-18-2016 |

| | |
|-------------------------------|-----------------------|
| Heater Indicator | No Heater |
| High Voltage Full Load Amps | 4.2 a |
| Insulation Class | F |
| Inverter Code | Inverter Ready |
| KVA Code | K |
| Lifting Lugs | Standard Lifting Lugs |
| Locked Bearing Indicator | Locked Bearing |
| Motor Lead Exit | Ko Box |
| Motor Lead Quantity/Wire Size | 9 @ 16 AWG |
| Motor Lead Termination | Flying Leads |
| Motor Standards | NEMA |
| Motor Type | 3630M |
| Mounting Arrangement | F1 |
| Number of Poles | 4 |
| Overall Length | 18.04 IN |
| Power Factor | 74 |
| Product Family | General Purpose |
| Pulley End Bearing Type | Ball |
| Pulley Face Code | C-Face |
| Pulley Shaft Indicator | Tapped & Key |
| Rodent Screen | Included |
| RoHS Status | ROHS COMPLIANT |
| Service Factor | 1.15 |
| Shaft Diameter | 0.875 IN |
| Shaft Extension Location | Pulley End |
| Shaft Ground Indicator | No Shaft Grounding |
| Shaft Rotation | Reversible |
| Shaft Slinger Indicator | Shaft Slinger |
| Speed | 1765 rpm |
| Speed Code | Single Speed |
| Starting Method | Direct on line |
| Thermal Device - Bearing | None |
| Thermal Device - Winding | None |
| Vibration Sensor Indicator | No Vibration Sensor |

Winding Thermal 1

None

Winding Thermal 2

None

Nameplate

| NP3553LUA | | | | | | | | | |
|----------------------------------|----------------------------|-------------|------|------------|---|--------------|---|--|-------|
| CAT.NO. | VEJMM3211T | | | | | | | | |
| SPEC. | 36Q830S658G1 | | | | | | | | |
| HP | 3 | | | | | | | | |
| VOLTS | 230/460 | | | | | | | | |
| AMPS | 8.4/4.2 | | | | | | | | |
| RPM | 1765 | | | | | | | | |
| FRAME | 182JM | HZ | 60 | PH | 3 | | | | |
| SF | 1.15 | CODE | K | DES | B | CLASS | F | | |
| NEMA NOM. EFF | 89.5 | PF | 74 | | | | | | |
| RATING | 40C AMB-CONT | | | | | | | | |
| CC | 010A | | | | | | | | |
| ENCL | ODP | SN | | | | | | | |
| DE | 6207 | ODE | 6205 | | | | | | |
| VPWM INVERTER READY | | | | | | | | | |
| CT30-60(2:1) VT3-60(20:1) | | | | | | | | | |
| USABLE AT | 50Hz 3HP 190/380V 9.8/4.9A | | | | | | | | SF1.0 |

Parts list

| Part number | Description | Quantity |
|-------------|--|----------|
| SA324430 | SA 36Q830S658G1 | 1.000 ea |
| RA312264 | RA 36Q830S658G1 | 1.000 ea |
| 36CB3004 | 36 CB CASTING W/1.09 DIA LEAD HOLE @ 6:0 | 1.000 ea |
| 51XB1016A07 | 10-16 X 7/16 HXWSSLD SERTYB | 2.000 ea |
| 11XW1032G06 | 10-32 X .38, TAPTITE II, HEX WSHR SLTD U | 1.000 ea |
| 36EP3204B01 | B00 W/DRIP CVR | 1.000 ea |
| HW4500A01 | 1641B(ALEMITE)400 UNIV, GREASE FITT | 1.000 ea |
| HA1103A08 | RODENT SCREEN, 36 FRAME, OPEN, FRONT END | 1.000 ea |
| 51XW1032A06 | 10-32 X .38, TAPTITE II, HEX WSHR SLTD S | 2.000 ea |
| HW1000A10 | #10 FLAT WASHER (SAE) | 4.000 ea |
| 10XN2520A26 | 1/4-20X 1 5/8 HEX HD | 4.000 ea |
| HW1000A10 | #10 FLAT WASHER (SAE) | 2.000 ea |
| HW5100A05 | WVY WSHR F/205 & 304 BRGS | 1.000 ea |
| 36EP3405A19 | PUEP 182-4C OPEN 207 BRG W/BAFF. TSLV, G | 1.000 ea |
| HW4500A01 | 1641B(ALEMITE)400 UNIV, GREASE FITT | 1.000 ea |
| 36AD2000 | AIR BAFFLE | 1.000 ea |
| 60XW0632A06 | 6-32 X 3/8 TORX HEAD SCREW TAPTITE II | 4.000 ea |
| 15XF0632A06 | 6-32 X 3/8 PHILL PAN HD TYPE F | 4.000 ea |
| HA1102A07 | RODENT SCREEN 36 OPEN FACE | 2.000 ea |
| 51XW1032A06 | 10-32 X .38, TAPTITE II, HEX WSHR SLTD S | 4.000 ea |
| HW1001A25 | LOCKWASHER 1/4, ZINC PLT .493 OD, .255 I | 4.000 ea |
| 36FH4012A01 | DRIP COVER NOTCH BOTTOM, W/ PRIMER | 1.000 ea |
| 51XW1032A06 | 10-32 X .38, TAPTITE II, HEX WSHR SLTD S | 3.000 ea |
| 36CB4516 | 750LIPPED CB LID - GALVANNEAL | 1.000 ea |
| 51XW0832A07 | 8-32 X .44, TAPTITE II, HEX WSHR SLTD SE | 4.000 ea |
| HA1005A07 | SLINGER, OD 2.25, ID 1.344, 307 BRG | 1.000 ea |
| HW2501D13 | KEY, 3/16 SQ X 1.375 | 1.000 ea |
| HA7000A01 | KEY RETAINER 7/8" DIA SHAFT | 1.000 ea |
| 85XU0407S04 | 4X1/4 U DRIVE PIN STAINLESS | 2.000 ea |
| MJ1000A02 | GREASE, POLYREX EM EXXON | 0.050 lb |
| MG1050Y01 | CELEROL BALDOR GOLD *** NLA IN 5 GALLON | 0.022 ga |

| | | |
|------------|--|----------|
| HA3101A25 | THRUBOLT 1/4-20 X 11.000 OHIO ROD | 4.000 ea |
| LC0005E01 | CONN.DIA./WARNING LABEL (LC0005/LB1119N) | 1.000 ea |
| NP3553LUA | ALUM SUPER-E VPWM INV READY UL CC NEMA P | 1.000 ea |
| G7PA1000 | PKG GRP, PRINT PK1034A06 | 1.000 ea |
| MN416A01 | TAG-INSTAL-MAINT no wire (2500bx)4/22 | 1.000 ea |
| FE-0000004 | ZRTG FE ASSEMBLY | 1.000 ea |

AC Induction Motor Performance Data

Record # 58171

Typical performance - not guaranteed values

| Winding: 36WGS658-R019 | | Type: 3630M | | Enclosure: ODP | |
|-------------------------------|-------------------|--------------------|--|-----------------------|--------------------------|
| Nameplate Data | | | 460 V, 60 Hz: High Voltage Connection | | |
| Rated Output (HP) | | 3 | Full Load Torque | | 8.87 LB-FT |
| Volts | | 230/460 | Start Configuration | | direct on line |
| Full Load Amps | | 8.4/4.2 | Breakdown Torque | | 37.4 LB-FT |
| R.P.M. | | 1765 | Pull-up Torque | | 17.3 LB-FT |
| Hz | 60 Phase | 3 | Locked-rotor Torque | | 21.2 LB-FT |
| NEMA Design Code | B KVA Code | K | Starting Current | | 32.3 A |
| Service Factor (S.F.) | | 1.15 | No-load Current | | 2.43 A |
| NEMA Nom. Eff. | 89.5 Power Factor | 74 | Line-line Res. @ 25°C | | 3.8716 Ω |
| Rating - Duty | | 40C AMB-CONT | Temp. Rise @ Rated Load | | 24°C |
| S.F. Amps | | | Temp. Rise @ S.F. Load | | 28°C |
| | | | Locked-rotor Power Factor | | 43 |
| | | | Rotor inertia | | 0.279 LB-FT ² |

Load Characteristics 460 V, 60 Hz, 3 HP

| % of Rated Load | 25 | 50 | 75 | 100 | 125 | 150 | S.F. |
|------------------------|-----------|-----------|-----------|------------|------------|------------|-------------|
| Power Factor | 33 | 53 | 66 | 73 | 79 | 81 | 77 |
| Efficiency | 80.2 | 87.5 | 89.5 | 89.7 | 89.5 | 88.7 | 89.6 |
| Speed | 1791.1 | 1783 | 1774.5 | 1765.5 | 1755.7 | 1744.8 | 1760 |
| Line amperes | 2.6 | 2.99 | 3.54 | 4.25 | 4.97 | 5.83 | 4.68 |

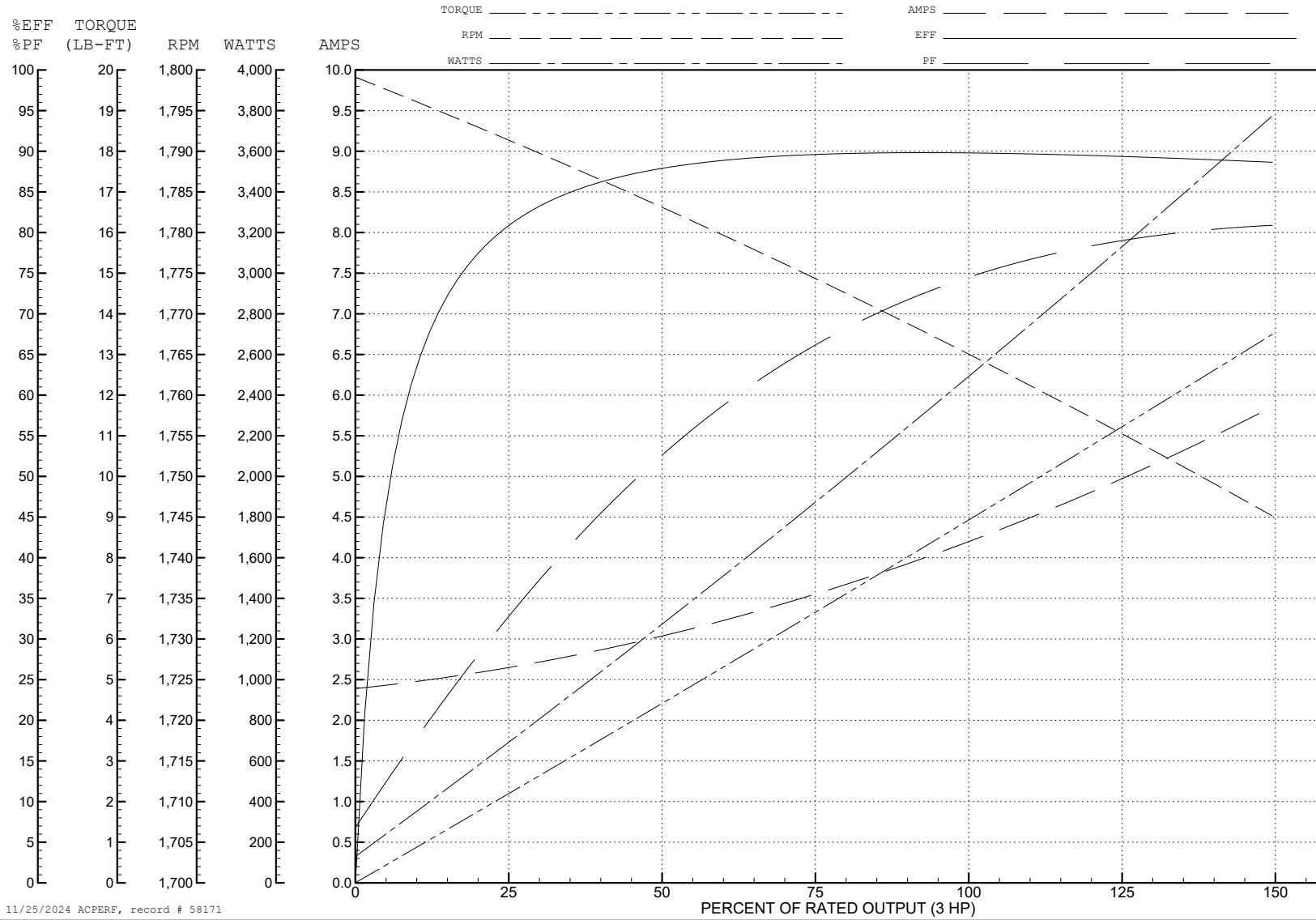
ABB Motors and Mechanical Inc.

WINDING # 36WGS658

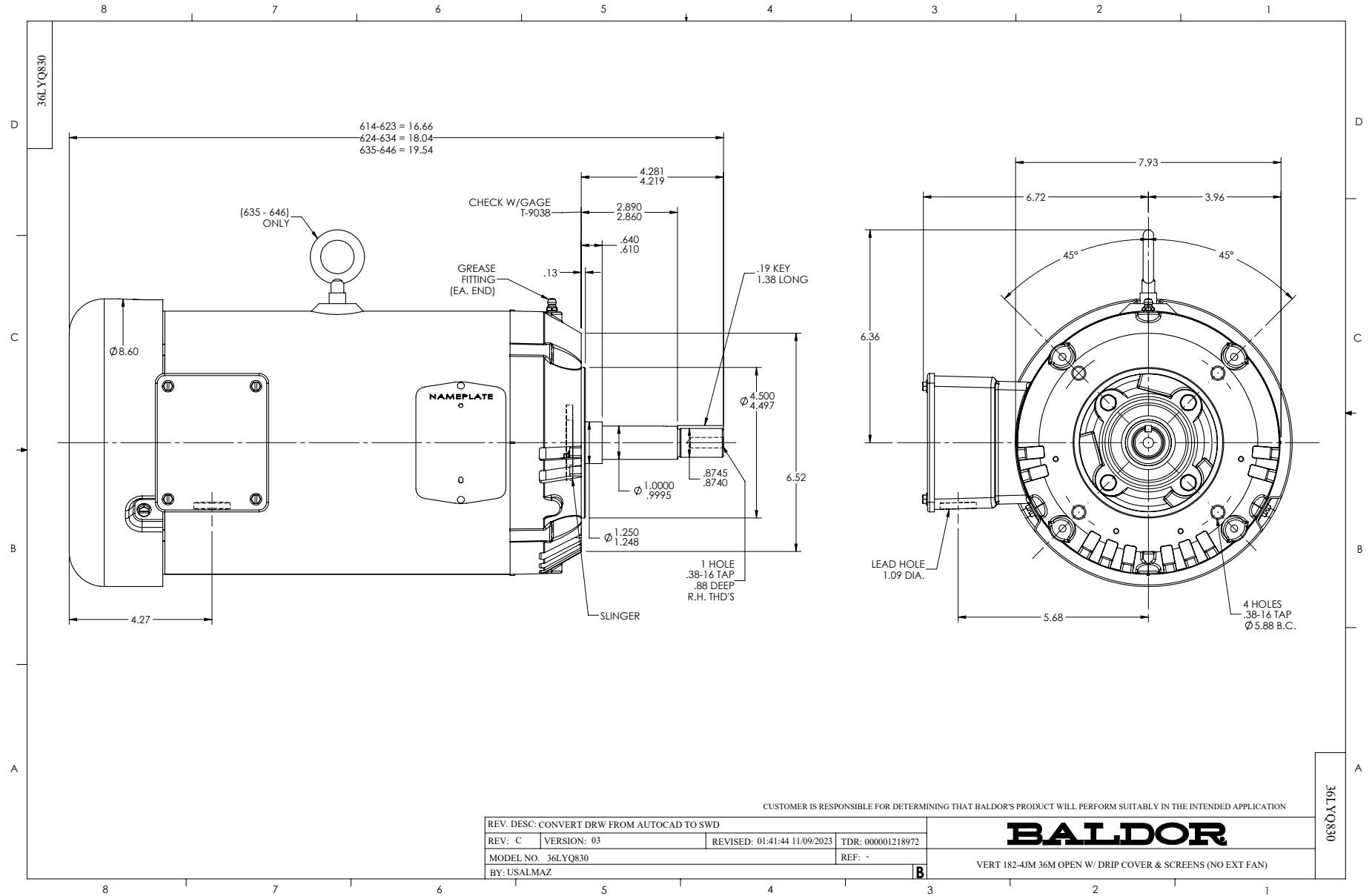
3 HP 3 PH 60 HZ 1765 RPM 460 V 3630M

Typical performance - not guaranteed values.

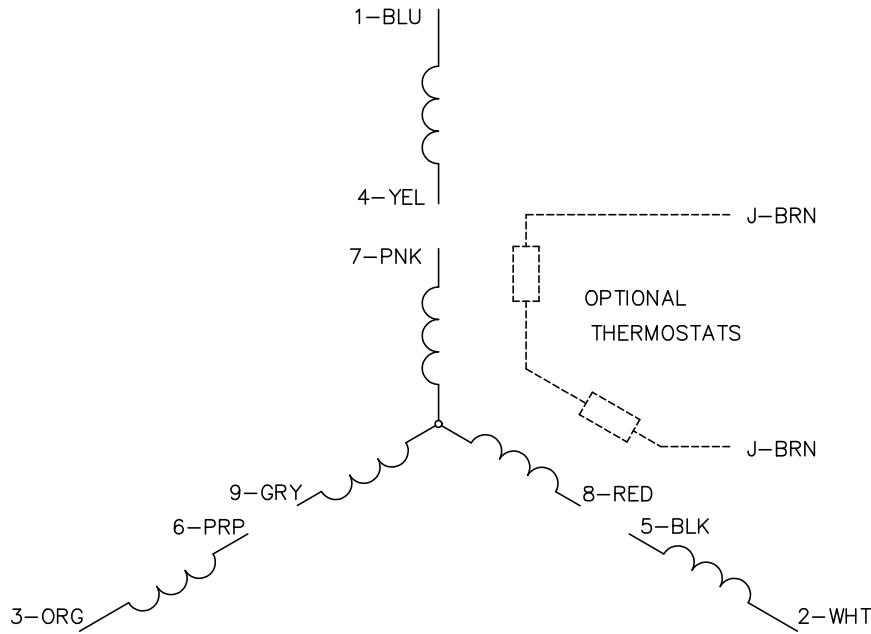
TORQUES (LB-FT): PO=37.4 PU=17.3 LR=21.2 LRA=32.3



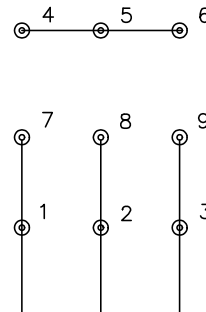
11/25/2024 ACPERF, record # 58171



CD0005

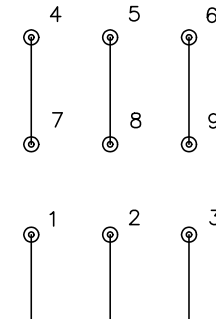


LOW VOLTAGE
(2Y)



LINE

HIGH VOLTAGE
(1Y)



LINE

NOTES:

1. INTERCHANGE ANY TWO LINE LEADS TO REVERSE ROTATION.
2. OPTIONAL THERMOSTATS ARE PROVIDED WHEN SPECIFIED.
3. ACTUAL NUMBER OF INTERNAL PARALLEL CIRCUITS MAY BE A MULTIPLE OF THOSE SHOWN ABOVE.
4. LEAD COLORS ARE OPTIONAL. LEADS MUST ALWAYS BE NUMBERED AS SHOWN.

CD0005

| | | | |
|---|---------|-------------------------|--------------|
| REV. DESC: REVISE TO SHOW OPTIONAL COLORS | | | |
| REV. LTR: E | BY: JLP | REVISED: 01/19/99 10:15 | TDR: 0171435 |
| S00000 | | FILE: AAA00005140 | MDL: - |
| | | MTL: - | |

BALDOR ELECTRIC Co.

3PH, DV, 9 LEADS