

**BALDOR • RELIANCE**

---

# Customer information packet

## VEJMM3212T

5HP, 3450RPM, 3PH, 60HZ, 182JM, 3622M, ODP, F1

Class - None

Division - Not Applicable

## Specifications

Enclosure	ODP
Frame	182JM
Frame Material	Steel
Frequency	60.00 Hz
Haz Area Class and Group	None
Haz Area Division	Not Applicable
Motor Letter Type	Three Phase
Output @ Frequency	5.000 HP @ 60 HZ
Phase	3
Synchronous Speed @ Frequency	3600 RPM @ 60 HZ
Voltage @ Frequency	460.0 V @ 60 HZ 230.0 V @ 60 HZ
Agency Approvals	CSA CSA EEV UR
Ambient Temperature	40 °C
Auxillary Box	No Auxillary Box
Auxillary Box Lead Termination	None
Base Indicator	No Mounting
Bearing Grease Type	Polyrex EM (-20F +300F)
Blower	None
Current @ Voltage	12.800 A @ 208.0 V 6.000 A @ 460.0 V 12.000 A @ 230.0 V
Design Code	A
Drip Cover	Drip Cover
Duty Rating	CONT
Efficiency @ 100% Load	86.5 %
Electrically Isolated Bearing	Not Electrically Isolated
Feedback Device	NO FEEDBACK
Front Face Code	Standard
Front Shaft Indicator	None

## Part detail

Revision	P
Type	AC
Mech. spec.	36Q302
Base	
Status	PRD/A
Elec. spec.	36WGS040
Layout	36LYQ302
Eff. date	06-11-2024
CD Diagram	CD0005
Poles	02
Leads	9#16
Proprietary	False
Created date	05-28-2015

Heater Indicator	No Heater
High Voltage Full Load Amps	6.0 a
Insulation Class	F
Inverter Code	Inverter Ready
KVA Code	K
Lifting Lugs	Standard Lifting Lugs
Locked Bearing Indicator	Locked Bearing
Motor Lead Exit	Ko Box
Motor Lead Quantity/Wire Size	9 @ 16 AWG
Motor Lead Termination	Flying Leads
Motor Standards	NEMA
Motor Type	3622M
Mounting Arrangement	F1
Number of Poles	2
Overall Length	16.66 IN
Power Factor	91
Product Family	General Purpose
Pulley End Bearing Type	Ball
Pulley Face Code	C-Face
Pulley Shaft Indicator	Tapped & Key
Rodent Screen	Included
RoHS Status	ROHS COMPLIANT
Service Factor	1.15
Shaft Diameter	0.875 IN
Shaft Extension Location	Pulley End
Shaft Ground Indicator	No Shaft Grounding
Shaft Rotation	Reversible
Shaft Slinger Indicator	Shaft Slinger
Speed	3450 rpm
Speed Code	Single Speed
Starting Method	Direct on line
Thermal Device - Bearing	None
Thermal Device - Winding	None
Vibration Sensor Indicator	No Vibration Sensor

**Winding Thermal 1**

None

**Winding Thermal 2**

None

**Nameplate**

<b>NP3553LUA</b>									
<b>CAT.NO.</b>	VEJMM3212T								
<b>SPEC.</b>	36Q302S040G1								
<b>HP</b>	5								
<b>VOLTS</b>	230/460								
<b>AMPS</b>	12/6								
<b>RPM</b>	3450								
<b>FRAME</b>	182JM		<b>HZ</b>	60		<b>PH</b>	3		
<b>SF</b>	1.15	<b>CODE</b>	K	<b>DES</b>	A	<b>CLASS</b>	F		
<b>NEMA NOM. EFF</b>	86.5	<b>PF</b>	91						
<b>RATING</b>	40C AMB-CONT								
<b>CC</b>	010A								
<b>ENCL</b>	ODP	<b>SN</b>							
<b>DE</b>	6207	<b>ODE</b>	6205						
<b>VPWM INVERTER READY</b>									
<b>CT30-60(2:1) VT3-60(20:1)</b>									
<b>USABLE AT</b>	50Hz 5HP 190/380V 14.6/7.3A							SF1.0	

## Parts list

Part number	Description	Quantity
SA302305	SA 36Q302S040G1	1.000 ea
RA289399	RA 36Q302S040G1	1.000 ea
36CB3004	36 CB CASTING W/1.09 DIA LEAD HOLE @ 6:0	1.000 ea
51XB1016A07	10-16 X 7/16 HXWSSLD SERTYB	2.000 ea
11XW1032G06	10-32 X .38, TAPTITE II, HEX WSHR SLTD U	1.000 ea
36EP3204B01	B00 W/DRIP CVR	1.000 ea
HW4500A01	1641B(ALEMITE)400 UNIV, GREASE FITT	1.000 ea
HW5100A05	WVY WSHR F/205 & 304 BRGS	1.000 ea
36EP3405A02	PUEP 182-4C OPEN 207 BRG W/BAFF. TSLV, G	1.000 ea
HW4500A01	1641B(ALEMITE)400 UNIV, GREASE FITT	1.000 ea
36AD2000	AIR BAFFLE	1.000 ea
60XW0632A06	6-32 X 3/8 TORX HEAD SCREW TAPTITE II	4.000 ea
10XN2520A26	1/4-20X 1 5/8 HEX HD	4.000 ea
HW1001A25	LOCKWASHER 1/4, ZINC PLT .493 OD, .255 I	4.000 ea
36FH4012A01	DRIP COVER NOTCH BOTTOM, W/ PRIMER	1.000 ea
51XW1032A06	10-32 X .38, TAPTITE II, HEX WSHR SLTD S	3.000 ea
36CB4516	750LIPPED CB LID - GALVANNEAL	1.000 ea
51XW0832A07	8-32 X .44, TAPTITE II, HEX WSHR SLTD SE	4.000 ea
HA1005A07	SLINGER, OD 2.25, ID 1.344, 307 BRG	1.000 ea
HW2501D13	KEY, 3/16 SQ X 1.375	1.000 ea
HA7000A01	KEY RETAINER 7/8" DIA SHAFT	1.000 ea
85XU0407S04	4X1/4 U DRIVE PIN STAINLESS	2.000 ea
MJ1000A02	GREASE, POLYREX EM EXXON	0.050 lb
MG1050Y01	CELEROL BALDOR GOLD *** NLA IN 5 GALLON	0.022 ga
HA3101A23	THRUBOLT 1/4-20 X 9.625 DEMBY	4.000 ea
LC0005E01	CONN.DIA./WARNING LABEL (LC0005/LB1119N)	1.000 ea
NP3553LUA	ALUM SUPER-E VPWM INV READY UL CC NEMA P	1.000 ea
36PA1001	PKG GRP, PRINT PK1017A06	1.000 ea
MN416A01	TAG-INSTAL-MAINT no wire (2500bx)4/22	1.000 ea
FE-0000001	ZRTG FE ASSEMBLY	1.000 ea

**AC Induction Motor Performance Data**

Record # 57977

Typical performance - not guaranteed values

<b>Winding:</b> 36WGS040-R018		<b>Type:</b> 3622M		<b>Enclosure:</b> ODP	
<b>Nameplate Data</b>			<b>460 V, 60 Hz: High Voltage Connection</b>		
<b>Rated Output (HP)</b>	5	<b>Full Load Torque</b>	7.66 LB-FT		
<b>Volts</b>	230/460	<b>Start Configuration</b>	direct on line		
<b>Full Load Amps</b>	12/6	<b>Breakdown Torque</b>	29.99 LB-FT		
<b>R.P.M.</b>	3450	<b>Pull-up Torque</b>	17.89 LB-FT		
<b>Hz</b>	60 Phase	3	<b>Locked-rotor Torque</b>	22.24 LB-FT	
<b>NEMA Design Code</b>	A	<b>KVA Code</b>	K	<b>Starting Current</b>	49.63 A
<b>Service Factor (S.F.)</b>	1.15	<b>No-load Current</b>	1.99 A		
<b>NEMA Nom. Eff.</b>	86.5	<b>Power Factor</b>	91	<b>Line-line Res. @ 25°C</b>	3.07 Ω
<b>Rating - Duty</b>	40C AMB-CONT		<b>Temp. Rise @ Rated Load</b>	34°C	
<b>S.F. Amps</b>			<b>Temp. Rise @ S.F. Load</b>	42°C	
			<b>Locked-rotor Power Factor</b>	49.2	
			<b>Rotor inertia</b>	0.0988 LB-FT <sup>2</sup>	

**Load Characteristics 460 V, 60 Hz, 5 HP**

<b>% of Rated Load</b>	<b>25</b>	<b>50</b>	<b>75</b>	<b>100</b>	<b>125</b>	<b>150</b>	<b>S.F.</b>
<b>Power Factor</b>	61	79	87	90	92	93	92
<b>Efficiency</b>	81.4	86.5	87.6	86.6	85.3	83.5	85.9
<b>Speed</b>	3566	3535	3503	3465	3423	3379	3445
<b>Line amperes</b>	2.5	3.49	4.68	6.06	7.56	9.15	6.91

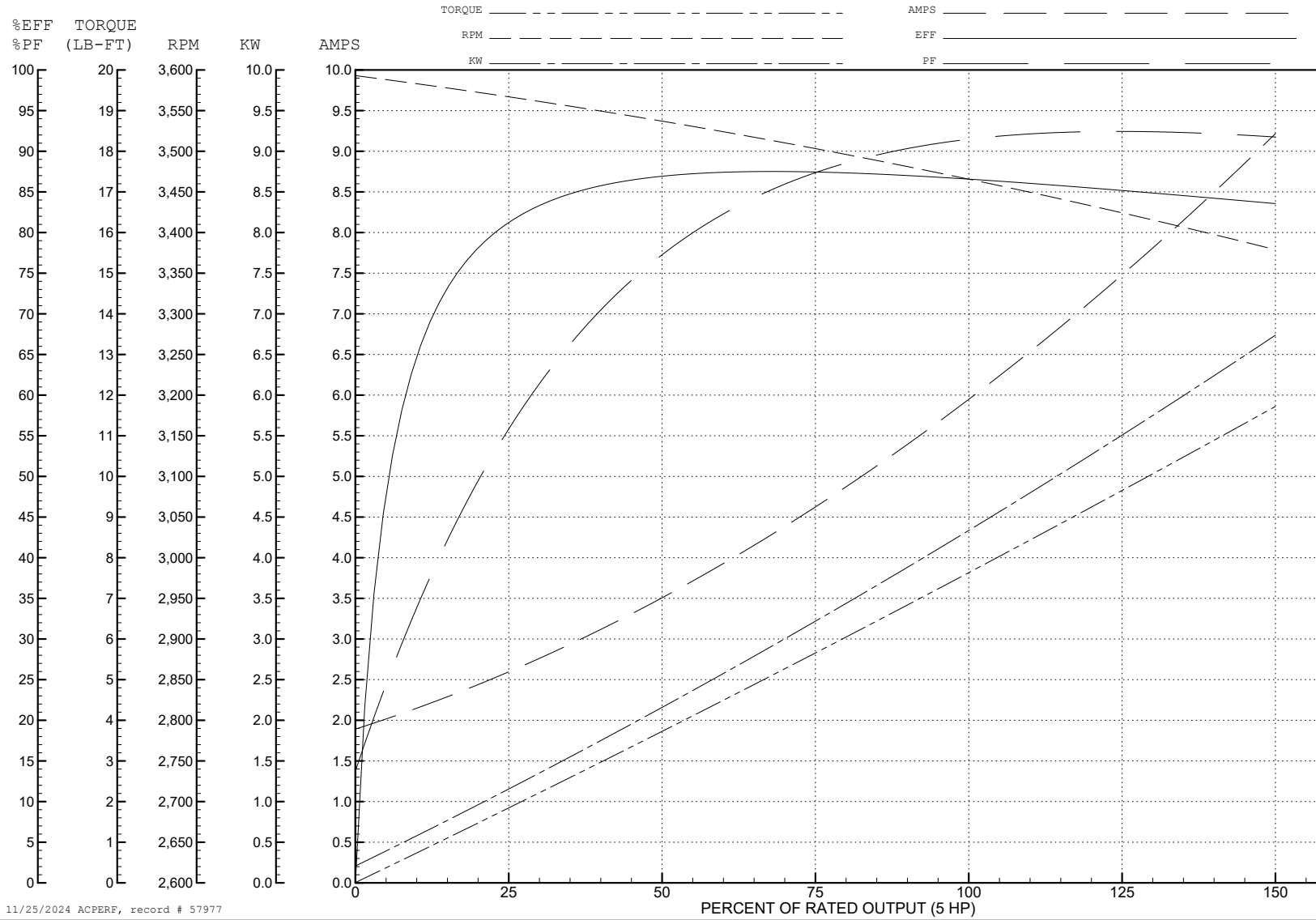
ABB Motors and Mechanical Inc.

WINDING # 36WGS040

Typical performance - not guaranteed values.

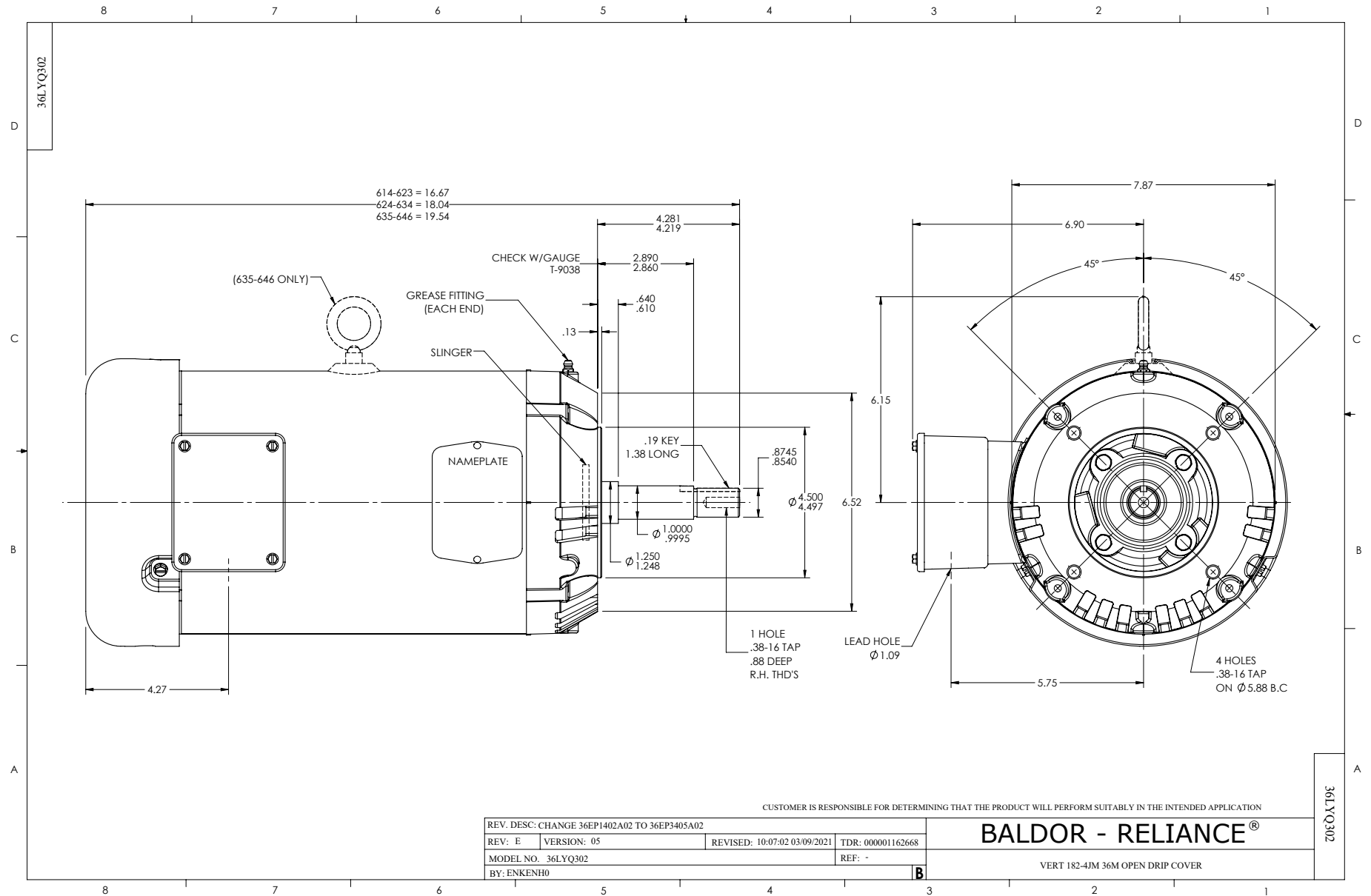
5 HP 3 PH 60 HZ 3450 RPM 460 V 3622M

TORQUES (LB-FT): PO=29.99 PU=17.89 LR=22.24 LRA=49.63

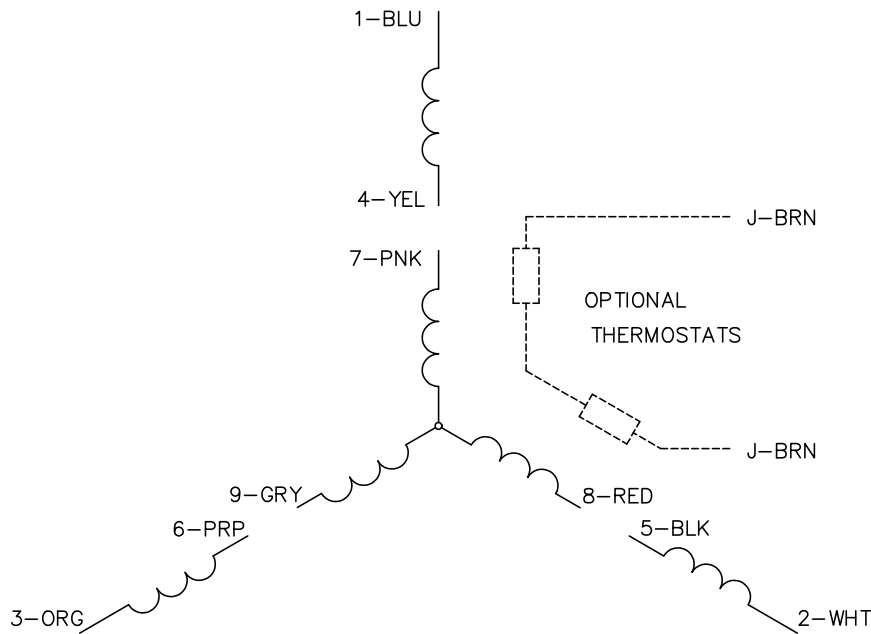


11/25/2024 ACPERF, record # 57977

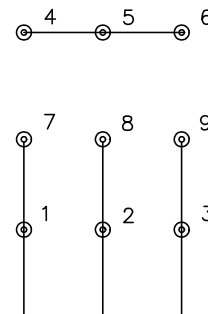




CD0005



LOW VOLTAGE  
(2Y)



LINE

HIGH VOLTAGE  
(1Y)



LINE

NOTES:

1. INTERCHANGE ANY TWO LINE LEADS TO REVERSE ROTATION.
2. OPTIONAL THERMOSTATS ARE PROVIDED WHEN SPECIFIED.
3. ACTUAL NUMBER OF INTERNAL PARALLEL CIRCUITS MAY BE A MULTIPLE OF THOSE SHOWN ABOVE.
4. LEAD COLORS ARE OPTIONAL. LEADS MUST ALWAYS BE NUMBERED AS SHOWN.

CD0005

REV. DESC: REVISE TO SHOW OPTIONAL COLORS			
REV. LTR: E	BY: JLP	REVISED: 01/19/99 10:15	TDR: 0171435
S00000		FILE: AAA00005140	MDL: -
		MTL: -	

**BALDOR ELECTRIC Co.**

3PH, DV, 9 LEADS