

**BALDOR • RELIANCE**

---

# Customer information packet

## VEL11307A

.75HP, 1755RPM, 1PH, 60HZ, 56C, 3524LC, OPEN, F

Class - None

Division - Not Applicable

## Specifications

Enclosure	OPEN
Frame	56C
Frame Material	Steel
Frequency	60.00 Hz
Haz Area Class and Group	None
Haz Area Division	Not Applicable
Motor Letter Type	Cap Start, Cap Run
Output @ Frequency	.750 HP @ 60 HZ
Phase	1
Synchronous Speed @ Frequency	1800 RPM @ 60 HZ
Voltage @ Frequency	115.0 V @ 60 HZ 230.0 V @ 60 HZ
Agency Approvals	CURUSEEV
Ambient Temperature	40 °C
Auxillary Box	No Auxillary Box
Auxillary Box Lead Termination	None
Base Indicator	No Mounting
Bearing Grease Type	Polyrex EM (-20F +300F)
Blower	None
Current @ Voltage	3.400 A @ 230.0 V 6.800 A @ 115.0 V
Design Code	N
Drip Cover	Drip Cover
Duty Rating	CONT
Efficiency @ 100% Load	81.8 %
Electrically Isolated Bearing	Not Electrically Isolated
Feedback Device	NO FEEDBACK
Front Face Code	Terminal Panel
Front Shaft Indicator	None
Heater Indicator	No Heater
High Voltage Full Load Amps	3.4 a
Insulation Class	F

## Part detail

Revision	F
Type	AC
Mech. spec.	35H993
Base	
Status	PRD/A
Elec. spec.	35WGL617
Layout	35LYH993
Eff. date	04-30-2024
CD Diagram	CD0703
Poles	04
Leads	6#18,1#14 #1TH
Proprietary	False
Created date	03-03-2017

Inverter Code	Not Inverter
KVA Code	M
Lifting Lugs	No Lifting Lugs
Locked Bearing Indicator	Locked Bearing
Motor Lead Exit	Terminal Panel
Motor Lead Quantity/Wire Size	6 @ 18 AWG
Motor Lead Termination	None
Motor Standards	NEMA
Motor Type	3524LC
Mounting Arrangement	F1
Number of Poles	4
Overall Length	12.74 IN
Power Factor	90
Product Family	General Purpose
Pulley End Bearing Type	Ball
Pulley Face Code	C-Face
Pulley Shaft Indicator	Standard
Rodent Screen	None
RoHS Status	ROHS COMPLIANT
Service Factor	1.25
Shaft Diameter	0.625 IN
Shaft Extension Location	Pulley End
Shaft Ground Indicator	No Shaft Grounding
Shaft Rotation	Reversible: Connected OPP STD
Shaft Slinger Indicator	No Slinger
Speed	1755 rpm
Speed Code	Single Speed
Starting Method	Direct on line
Thermal Device - Bearing	None
Thermal Device - Winding	None
Vibration Sensor Indicator	No Vibration Sensor
Winding Thermal 1	Automatic Thermal Overload
Winding Thermal 1 Location	SB
Winding Thermal 2	None

**Nameplate**

NP3273L									
<b>CAT.NO.</b>	VEL11307A								
<b>SPEC.</b>	35H993L617G1								
<b>HP</b>	.75								
<b>VOLTS</b>	115/230								
<b>AMP</b>	6.8/3.4								
<b>RPM</b>	1755								
<b>FRAME</b>	56C		<b>HZ</b>	60		<b>PH</b>	1		
<b>SER.F.</b>	1.25	<b>CODE</b>	M	<b>DES</b>	N	<b>CL</b>	F		
<b>F.L. AVG. EFF.</b>	81.8	<b>PF</b>	90						
<b>RATING</b>	40C AMB-CONT								
<b>CC</b>			<b>USABLE AT 208V</b>				N/A		
<b>DE</b>	6205		<b>ODE</b>	6203					
<b>ENCL</b>	OPEN	<b>SN</b>							
	SFA 8.3/4.15								

## Parts list

Part number	Description	Quantity
SA335102	SA 35H993L617G1	1.000 ea
RA323279	RA 35H993L617G1	1.000 ea
OC3035F09SP	CYL OIL CAP 35MFD/370V	1.000 ea
EC1540A04	ELEC CAP, 540-648 MFD, 125V, 1.81D X 4.	1.000 ea
11XW0832G06	#8-32 X 3/8, TAPTITE II, HEX WSHR SLTD	1.000 ea
35EP3202A09	FR ENDPLATE, MACH	1.000 ea
51XW0832A07	8-32 X .44, TAPTITE II, HEX WSHR SLTD SE	3.000 ea
35CB3801	CAPACITOR COVER, CAST	1.000 ea
HA7010	CAPACITOR RETENTION CLAMP	1.000 ea
NS2501A02	INSULATOR, CAPACITOR BOX	1.000 ea
51XB1016A08	10-16X 1/2HXWSSLD SERTYB	2.000 ea
HW5100A03	WAVY WASHER (W1543-017)	1.000 ea
35EP3402C00	MASTER DE,205 BRG,OPEN	1.000 ea
35AD2000	AIR BAFFLE - GALVANNEAL	1.000 ea
60XW0632A06	6-32 X 3/8 TORX HEAD SCREW TAPTITE II	4.000 ea
51XN1032A20	10-32 X 1 1/4 HX WS SL SR	2.000 ea
35FH4500A02	DRIP COVER, STAMPED (W/ PRIMER	1.000 ea
51XW0832A07	8-32 X .44, TAPTITE II, HEX WSHR SLTD SE	2.000 ea
35CB4500SP	TERMINAL BOX LID STAMPED	1.000 ea
51XW0832A07	8-32 X .44, TAPTITE II, HEX WSHR SLTD SE	2.000 ea
HW2501D13	KEY, 3/16 SQ X 1.375	1.000 ea
HA7000A04	KEY RETAINER 0.625 DIA SHAFTS	1.000 ea
85XU0407S04	4X1/4 U DRIVE PIN STAINLESS	2.000 ea
WD1000A15	3-520132-2 AMP FLAG (4M/RL NON-CANC/NON-	4.000 ea
MJ1000A02	GREASE, POLYREX EM EXXON	0.050 lb
MG1050Y01	CELEROL BALDOR GOLD *** NLA IN 5 GALLON	0.017 ga
SP5065A03	34/35 TP STAT SW W/ LEADS, NO THERMAL	1.000 ea
HA3100A15	THRUBOLT 10-32 X 8.375	4.000 ea
LB1118	LABEL,WARNING (ROLL LABEL)	1.000 ea
LC0052	CONNECTION LABEL	1.000 ea
NP3273L	ALUM SUPER-E THERMALLY PROTECTED	1.000 ea

35PA1066	PKG GRP, PRINT PK1008A06	1.000 ea
PK3082	STYROFOAM CRADLE	1.000 ea
MN416A01	TAG-INSTAL-MAINT no wire (2500bx)4/22	1.000 ea
PE-0000011	ZRTG PE ASSEMBLY	1.000 ea

**AC Induction Motor Performance Data**

Record # 62959

Typical performance - not guaranteed values

<b>Winding:</b> 35WGL617-R001		<b>Type:</b> 3524LC		<b>Enclosure:</b> OPEN	
<b>Nameplate Data</b>			<b>115 V, 60 Hz: Low Voltage Connection</b>		
<b>Rated Output (HP)</b>	.75		<b>Full Load Torque</b>	2.24 LB-FT	
<b>Volts</b>	115/230		<b>Start Configuration</b>	direct on line	
<b>Full Load Amps</b>	6.8/3.4		<b>Breakdown Torque</b>	6.98 LB-FT	
<b>R.P.M.</b>	1755		<b>Pull-up Torque</b>	4.73 LB-FT	
<b>Hz</b>	<b>60 Phase</b>	<b>1</b>	<b>Locked-rotor Torque</b>	9.82 LB-FT	
<b>NEMA Design Code</b>	<b>N</b>	<b>KVA Code</b>	<b>M</b>	<b>Starting Current</b>	64.4 A
<b>Service Factor (S.F.)</b>	1.25		<b>No-load Current</b>	3.41 A	
<b>NEMA Nom. Eff.</b>	<b>81.8</b>	<b>Power Factor</b>	<b>90</b>	<b>Line-line Res. @ 25°C</b>	0.78 Ω A Ph 2.3 Ω B Ph
<b>Rating - Duty</b>	40C AMB-CONT		<b>Temp. Rise @ Rated Load</b>	20°C	
<b>S.F. Amps</b>	8.3/4.15		<b>Temp. Rise @ S.F. Load</b>	25°C	
			<b>Locked-rotor Power Factor</b>	91.6	
			<b>Rotor inertia</b>	0.142 LB-FT <sup>2</sup>	

**Load Characteristics 115 V, 60 Hz, 0.75 HP**

<b>% of Rated Load</b>	<b>25</b>	<b>50</b>	<b>75</b>	<b>100</b>	<b>125</b>	<b>150</b>	<b>S.F.</b>
<b>Power Factor</b>	53	71	80	85	89	91	89
<b>Efficiency</b>	61.8	75.6	81	82.4	82.5	80.8	82.5
<b>Speed</b>	1791	1781	1770	1759	1747	1733	1747
<b>Line amperes</b>	3.76	4.52	5.6	6.91	8.28	9.95	8.28

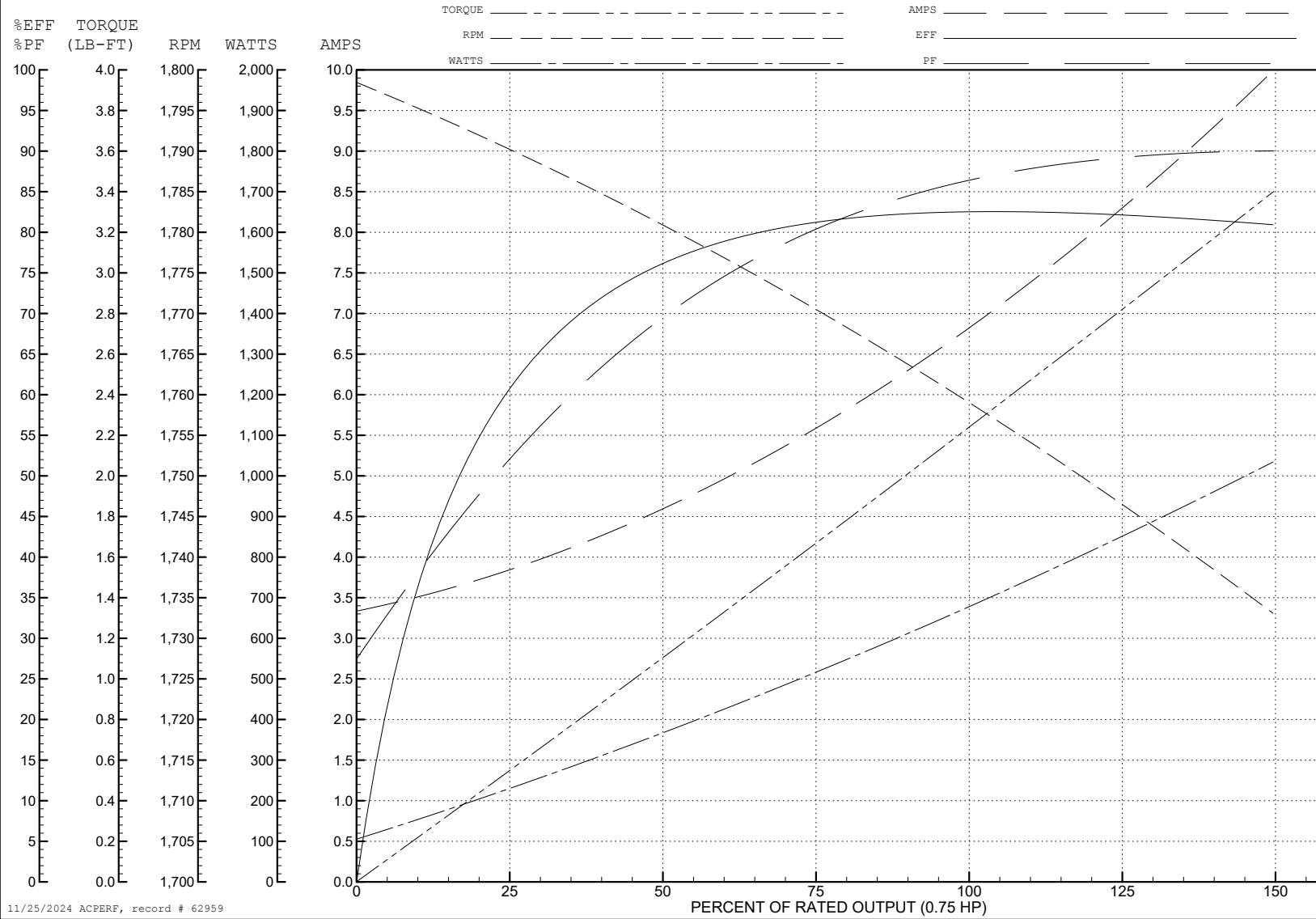
ABB Motors and Mechanical Inc.

WINDING # 35WGL617

Typical performance - not guaranteed values.

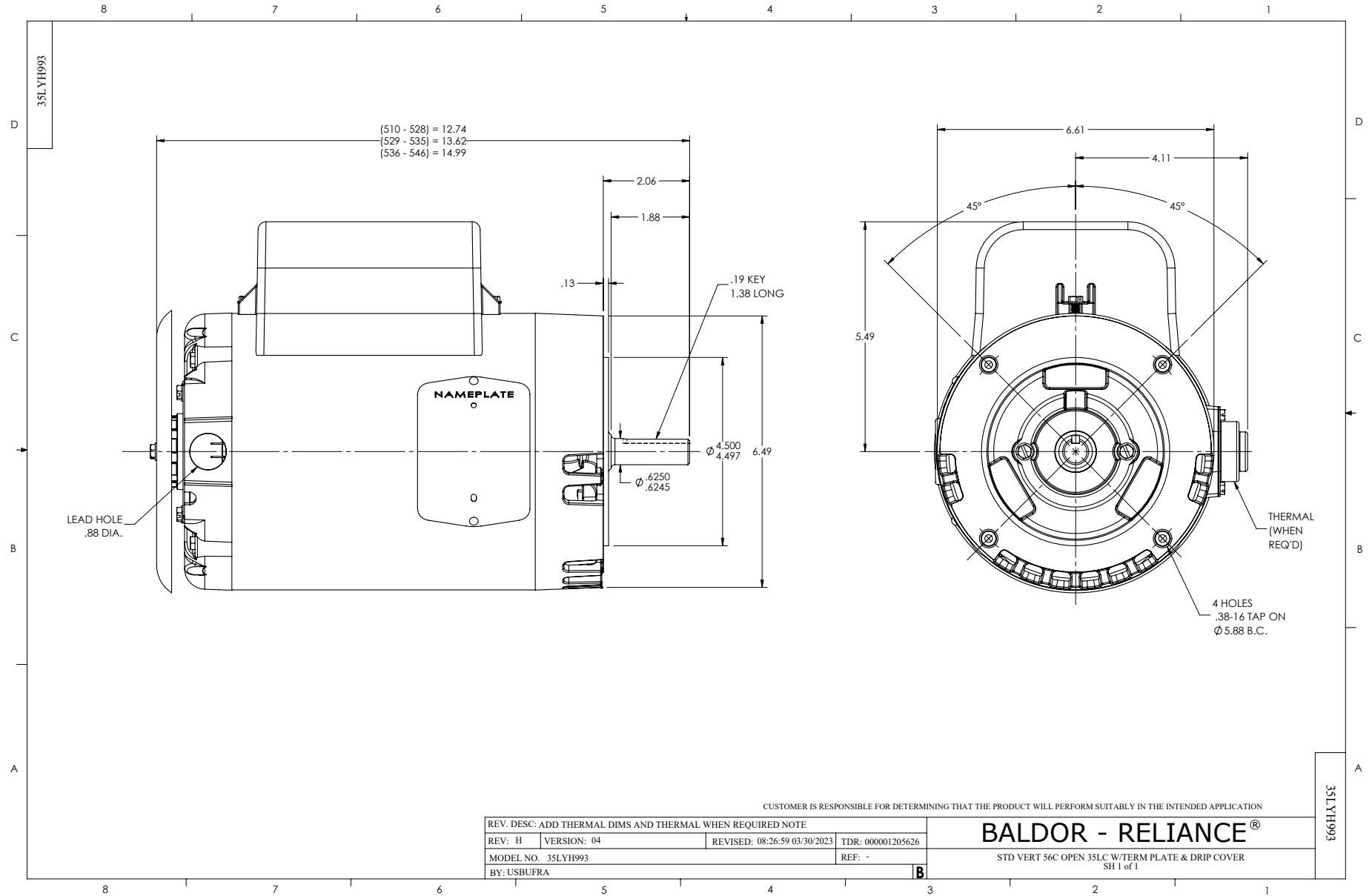
0.75 HP 1 PH 60 HZ 1755 RPM 115 V 3524LC

TORQUES (LB-FT): PO=6.98 PU=4.73 LR=9.82 LRA=64.4

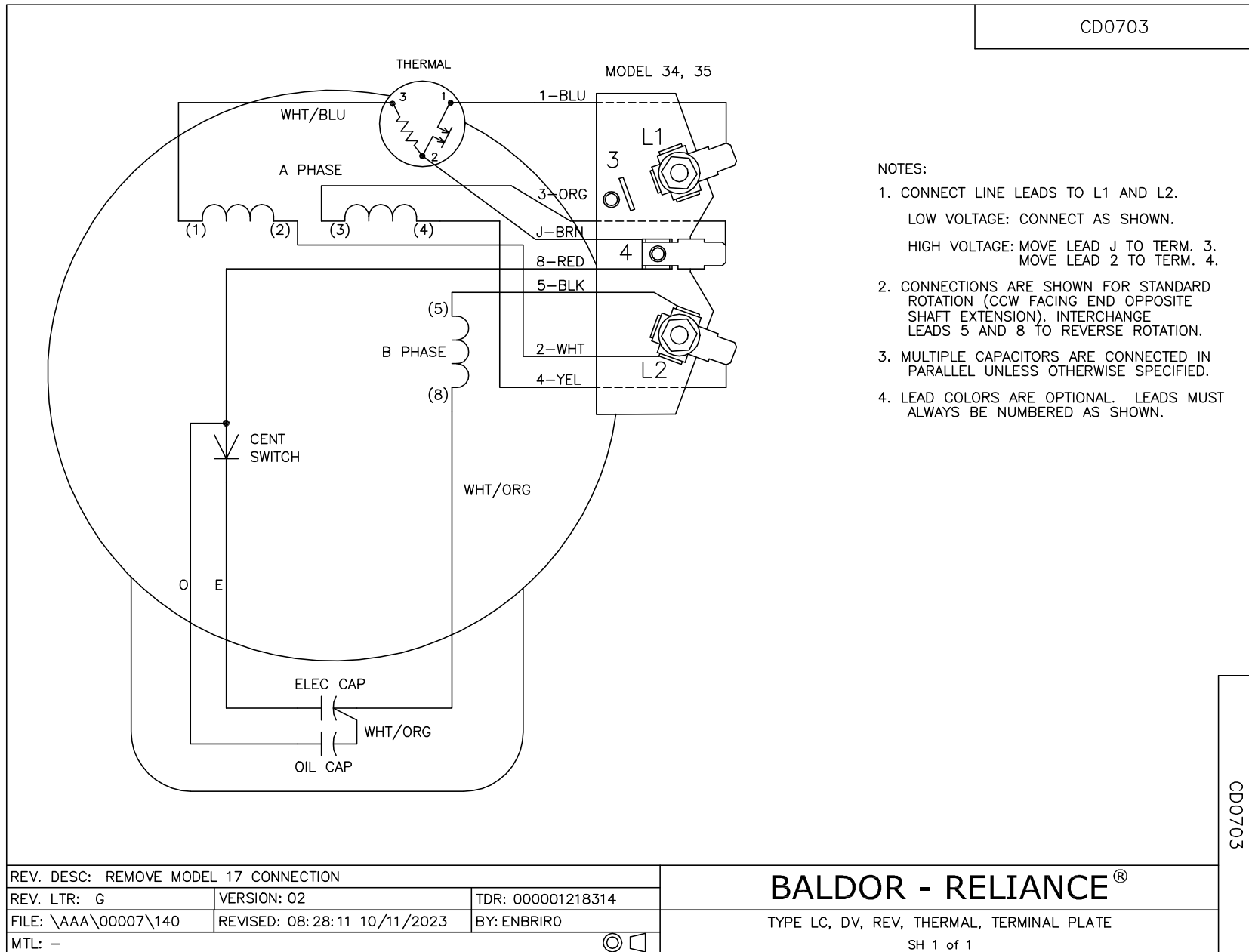


11/25/2024 ACPERF, record # 62959





CD0703



CD0703

REV. DESC: REMOVE MODEL 17 CONNECTION		
REV. LTR: G	VERSION: 02	TDR: 000001218314
FILE: \AAA\00007\140	REVISED: 08:28:11 10/11/2023	BY: ENBRIRO
MTL: -		

**BALDOR - RELIANCE®**

TYPE LC, DV, REV, THERMAL, TERMINAL PLATE  
SH 1 of 1