

BALDOR® • RELIANCE™

Customer information packet

VEL11313

1.5HP, 3480RPM, 1PH, 60HZ, 56C, 3532LC, OPEN, F

Class - None

Division - Not Applicable

Copyright © All product information within this document is subject to ABB Motors and Mechanical Inc. copyright © protection, unless otherwise noted.

11/25/2024 1:59:14 AM

Specifications

Enclosure	OPEN
Frame	56C
Frame Material	Steel
Frequency	60.00 Hz
Haz Area Class and Group	None
Haz Area Division	Not Applicable
Motor Letter Type	Cap Start, Cap Run
Output @ Frequency	1.500 HP @ 60 HZ
Phase	1
Synchronous Speed @ Frequency	3600 RPM @ 60 HZ
Voltage @ Frequency	115.0 V @ 60 HZ 230.0 V @ 60 HZ
Agency Approvals	CURUSEEV
Ambient Temperature	40 °C
Auxillary Box	No Auxillary Box
Auxillary Box Lead Termination	None
Base Indicator	No Mounting
Bearing Grease Type	Polyrex EM (-20F +300F)
Blower	None
Current @ Voltage	11.800 A @ 115.0 V 5.900 A @ 230.0 V 7.800 A @ 208.0 V
Design Code	L
Drip Cover	Drip Cover
Duty Rating	CONT
Efficiency @ 100% Load	82.0 %
Electrically Isolated Bearing	Not Electrically Isolated
Feedback Device	NO FEEDBACK
Front Face Code	Standard
Front Shaft Indicator	None
Heater Indicator	No Heater
High Voltage Full Load Amps	5.9 a

Part detail

Revision	P
Type	AC
Mech. spec.	35E4016
Base	
Status	PRD/A
Elec. spec.	35WGN673
Layout	35LYE4016
Eff. date	05-16-2024
CD Diagram	CD0055
Poles	02
Leads	6#16
Proprietary	False
Created date	09-24-2014

Insulation Class	B
Inverter Code	Not Inverter
KVA Code	G
Lifting Lugs	No Lifting Lugs
Locked Bearing Indicator	Locked Bearing
Motor Lead Exit	Ko Box
Motor Lead Quantity/Wire Size	6 @ 16 AWG
Motor Lead Termination	Flying Leads
Motor Standards	NEMA
Motor Type	3532LC
Mounting Arrangement	F1
Number of Poles	2
Overall Length	14.10 IN
Power Factor	99
Product Family	General Purpose
Pulley End Bearing Type	Ball
Pulley Face Code	C-Face
Pulley Shaft Indicator	Standard
Rodent Screen	None
RoHS Status	ROHS COMPLIANT
Service Factor	1.15
Shaft Diameter	0.625 IN
Shaft Extension Location	Pulley End
Shaft Ground Indicator	No Shaft Grounding
Shaft Rotation	Reversible
Shaft Slinger Indicator	No Slinger
Speed	3480 rpm
Speed Code	Single Speed
Starting Method	Direct on line
Thermal Device - Bearing	None
Thermal Device - Winding	None
Vibration Sensor Indicator	No Vibration Sensor
Winding Thermal 1	None
Winding Thermal 2	None

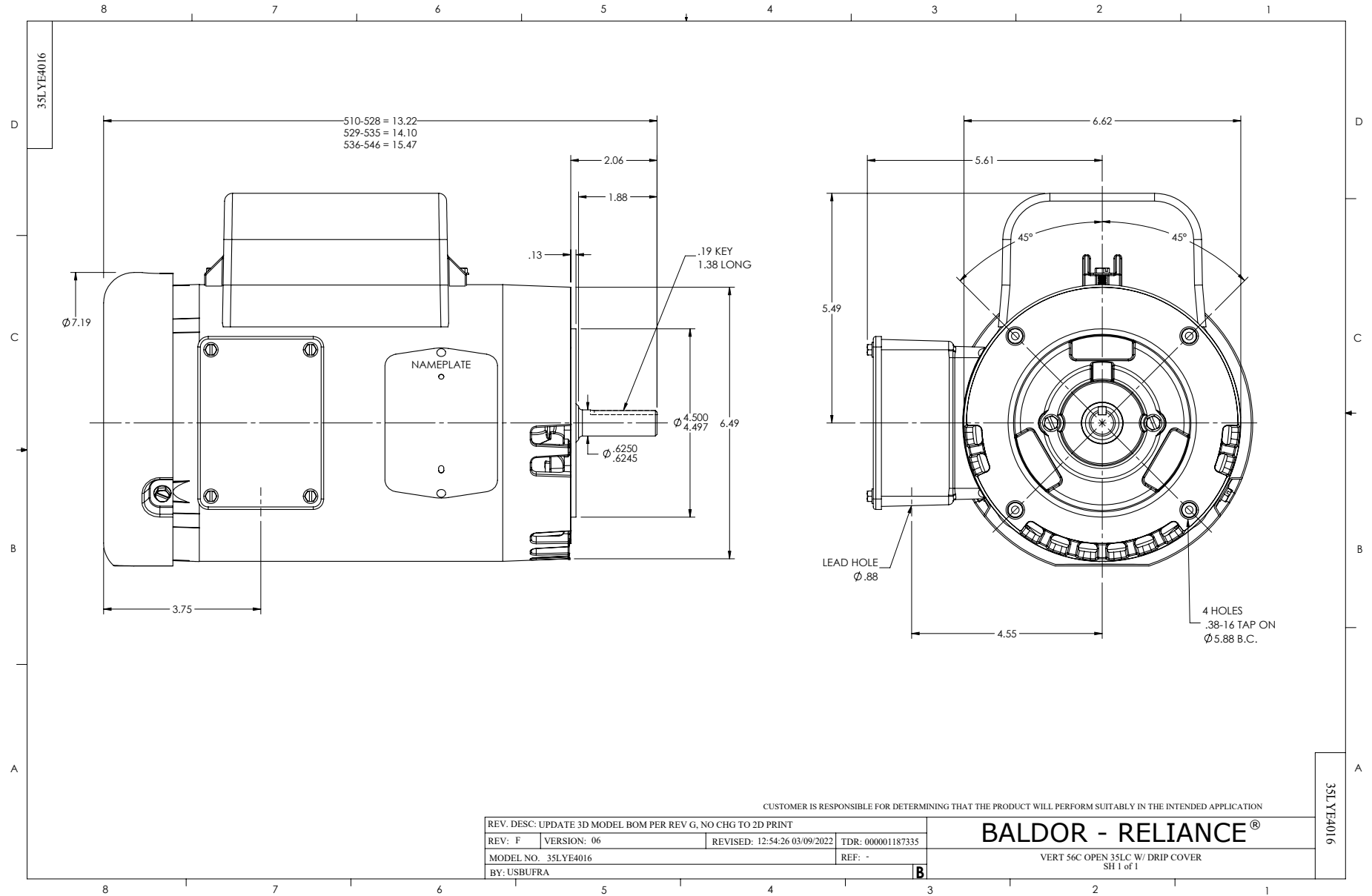
Nameplate

NP3155L									
CAT.NO.	VEL11313								
SPEC.	35E4016N673G1								
HP	1.5								
VOLTS	115/230								
AMP	11.8/5.9								
RPM	3480								
FRAME	56C		HZ	60		PH	1		
SER.F.	1.15	CODE	G	DES	L	CL	B		
F.L. AVG. EFF.	82	PF	99						
RATING	40C AMB-CONT								
CC									
DE	6205		ODE	6203					
ENCL	OPEN	SN							

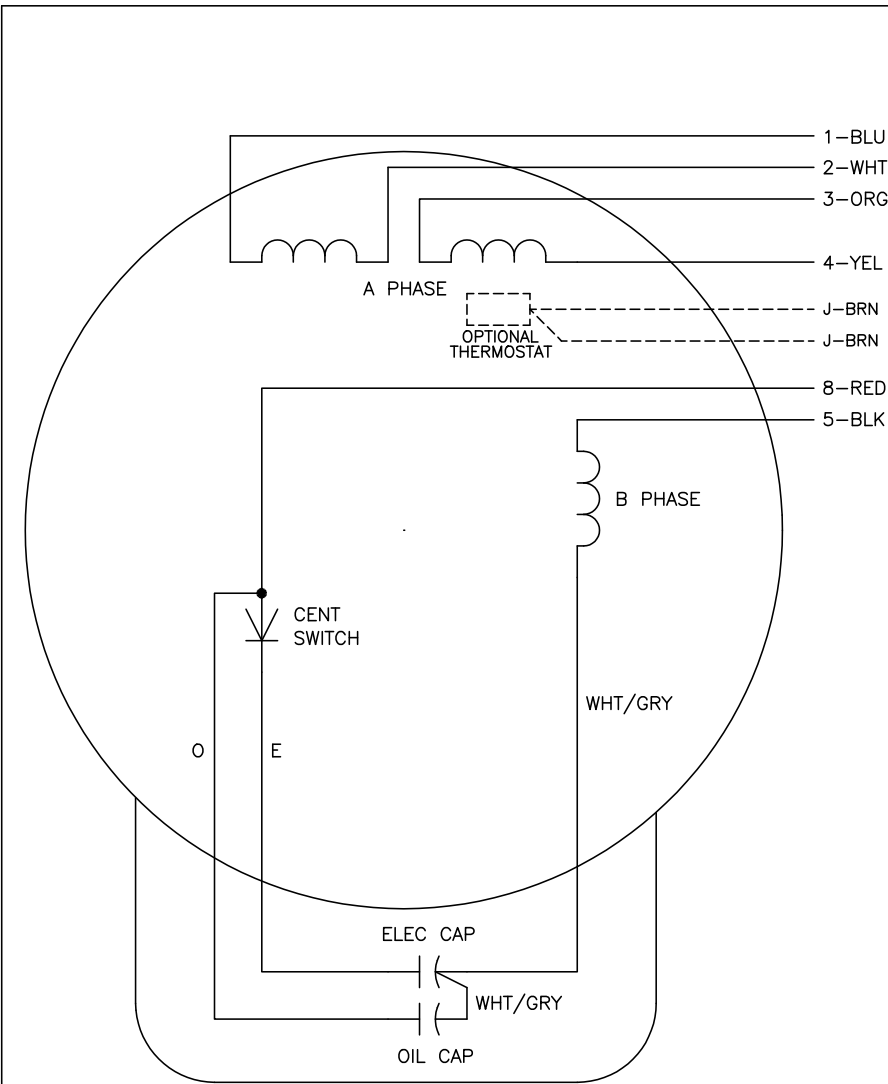
Parts list

Part number	Description	Quantity
SA287414	SA 35E4016N673G1	1.000 ea
RA273627	RA 35E4016N673G1	1.000 ea
OC3070C09	AEROVOX #Z24P247OM22A1 OIL CAP 70MFD/240	1.000 ea
EC1645B06	ELEC CAP 165V 2.0 X 4.3	1.000 ea
WD3006A01	RSS-2-103JT 2W 10K RES. METAL OXIDE 5%	1.000 ea
NS2512A01	INSULATOR, CONDUIT BOX X	1.000 ea
35CB3007	35 CB CASTING W/.88 DIA. LEAD HOLE	1.000 ea
51XB1016A07	10-16 X 7/16 HXWSSLD SERTYB	2.000 ea
11XW1032G06	10-32 X .38, TAPTITE II, HEX WSHR SLTD U	1.000 ea
51XW0832A07	8-32 X .44, TAPTITE II, HEX WSHR SLTD SE	2.000 ea
35CB3801	CAPACITOR COVER, CAST	1.000 ea
HA7010	CAPACITOR RETENTION CLAMP	1.000 ea
NS2501A02	INSULATOR, CAPACITOR BOX	1.000 ea
51XB1016A08	10-16X 1/2HXWSSLD SERTYB	2.000 ea
35EP3209F00	MASTER ODE,203 BRG,DRIP CVR	1.000 ea
HW5100A03	WAVY WASHER (W1543-017)	1.000 ea
51XN1032A20	10-32 X 1 1/4 HX WS SL SR	2.000 ea
35EP3402C00	MASTER DE,205 BRG,OPEN	1.000 ea
35AD2000	AIR BAFFLE - GALVANNEAL	1.000 ea
60XW0632A06	6-32 X 3/8 TORX HEAD SCREW TAPTITE II	4.000 ea
35FH4006A01SP	DRIP COVER,STAMPED,W/ PRIMER	1.000 ea
51XN0832A07	08-32 #10 & SMALLER HEX. WASHER HEAD, SL	3.000 ea
35CB4521	35 LIPPED CB LID (GALV & PHOSPH)	1.000 ea
51XW0832A07	8-32 X .44, TAPTITE II, HEX WSHR SLTD SE	4.000 ea
HW2501D13	KEY, 3/16 SQ X 1.375	1.000 ea
HA7000A04	KEY RETAINER 0.625 DIA SHAFTS	1.000 ea
85XU0407S04	4X1/4 U DRIVE PIN STAINLESS	2.000 ea
WD1000A16	2-520128-2 AMP FLAG TERMINAL(4M/RL)	4.000 ea
MJ1000A02	GREASE, POLYREX EM EXXON	0.050 lb
MG1050Y01	CELEROL BALDOR GOLD *** NLA IN 5 GALLON	0.017 ga
HA3100A18	THRUBOLT 10-32 X 9.250	4.000 ea

SP5181A01	MODEL 35 LC TORQ STAT SWITCH LEAD ASSY	1.000 ea
LC0001A01	CONN LABEL / WARNING LABEL (LC0001 / LB1	1.000 ea
NP3155L	ALUM SUPER-E UL CC "SEMS"	1.000 ea
PK3083	STYROFOAM PACKING CRADLE	1.000 ea
36PA1000	PKG GRP, PRINT PK1016A06	1.000 ea
PK3088	MICROFOAM, 8"X"8 PERF. SHEETS	1.000 ea
FE-0000001	ZRTG FE ASSEMBLY	1.000 ea
PE-0000011	ZRTG PE ASSEMBLY	1.000 ea
MN416A01	TAG-INSTAL-MAINT no wire (2500bx)4/22	1.000 ea



CD0055



	LINE A	LINE B	JOIN
HIGH STD	1	4,5	2,3,8
HIGH OPP	1	4,8	2,3,5
LOW STD	1,3,8	2,4,5	-
LOW OPP	1,3,5	2,4,8	-

NOTES:

1. STANDARD ROTATION IS CCW FACING END OPPOSITE SHAFT EXTENSION.
2. OPTIONAL THERMOSTAT IS PROVIDED WHEN SPECIFIED.
3. MULTIPLE CAPACITORS ARE CONNECTED IN PARALLEL UNLESS OTHERWISE SPECIFIED.
4. LEAD COLORS ARE OPTIONAL. LEADS MUST ALWAYS BE NUMBERED AS SHOWN.

REV. DESC: REVISE TO SHOW OPTIONAL COLORS			
REV. LTR: D	BY: JLP	REVISED: 04/08/99 1:17	TDR: 0178636
C00000		FILE: AAA00007414	MDL: -
		MTL: -	

BALDOR ELECTRIC Co.

TYPE LC, DV, REV, 6 LEADS

CD0055