



Customer information packet

VEM2513T

15HP, 1765RPM, 3PH, 60HZ, 254TC, 3948M, ODP, F1

Class - None

Division - Not Applicable

Specifications

Enclosure	ODP
Frame	254TC
Frame Material	Steel
Frequency	60.00 Hz
Haz Area Class and Group	None
Haz Area Division	Not Applicable
Motor Letter Type	Three Phase
Output @ Frequency	15.000 HP @ 60 HZ
Phase	3
Synchronous Speed @ Frequency	1800 RPM @ 60 HZ
Voltage @ Frequency	460.0 V @ 60 HZ 230.0 V @ 60 HZ
Agency Approvals	NEMA PREMIUM NEMA_PREMIUM UR CSA EEV
Ambient Temperature	40 °C
Auxillary Box	No Auxillary Box
Auxillary Box Lead Termination	None
Base Indicator	No Mounting
Bearing Grease Type	Polyrex EM (-20F +300F)
Blower	None
Current @ Voltage	36.400 A @ 230.0 V 39.000 A @ 208.0 V 18.200 A @ 460.0 V
Design Code	A
Drip Cover	Drip Cover
Duty Rating	CONT
Efficiency @ 100% Load	93.0 %
Electrically Isolated Bearing	Not Electrically Isolated
Feedback Device	NO FEEDBACK
Front Face Code	Drip Cover Mounting

Part detail

Revision	R
Type	AC
Mech. spec.	39T032
Base	
Status	PRD/A
Elec. spec.	39WGY375
Layout	39LYT032
Eff. date	06-27-2024
CD Diagram	CD0180
Poles	04
Leads	9#12
Proprietary	False
Created date	10-03-2017

Front Shaft Indicator	None
Heater Indicator	No Heater
High Voltage Full Load Amps	18.2 a
Insulation Class	F
Inverter Code	Inverter Ready
KVA Code	J
Lifting Lugs	Standard Lifting Lugs
Locked Bearing Indicator	Locked Bearing
Motor Lead Exit	Ko Box
Motor Lead Quantity/Wire Size	9 @ 12 AWG
Motor Lead Termination	Flying Leads
Motor Standards	NEMA
Motor Type	3948M
Mounting Arrangement	F1
Number of Poles	4
Overall Length	24.15 IN
Power Factor	83
Product Family	General Purpose
Pulley End Bearing Type	Ball
Pulley Face Code	C-Face
Pulley Shaft Indicator	Standard
Rodent Screen	None
Service Factor	1.15
Shaft Diameter	1.625 IN
Shaft Extension Location	Pulley End
Shaft Ground Indicator	No Shaft Grounding
Shaft Rotation	Reversible
Shaft Slinger Indicator	No Slinger
Speed	1770 rpm
Speed Code	Single Speed
Starting Method	Direct on line
Thermal Device - Bearing	None
Thermal Device - Winding	None
Vibration Sensor Indicator	No Vibration Sensor

Winding Thermal 1

None

Winding Thermal 2

None

Nameplate

NP3554LUA										
CAT.NO.	VEM2513T			P/N				ENCL		ODP
SPEC.	39T032Y375G1	CC	010A	FRAME		254TC	SER.NO.			
HP	15	CLASS		F	HZ	60				
RPM	1770	PH	3	DES		A				
VOLTS	230/460			CODE		J	ODE BRG	6208	DE BRG	6309
AMPS	36.4/18.2									
RATING	40C AMB-CONT			NEMA-NOM-EFF		93	GREASE	POLYREX EM		
PF	83	SER.F.	1.15	CT30-60(2:1) VT3-60(20:1)						
USABLE AT	50HZ 15HP 190/380V 44/22A			SF 1.0						
HTR-VOLTS	HTR-AMPS	MAX. SPACE HEATER TEMP.								

Parts list

Part number	Description	Quantity
SA345604	SA 39T032Y375G1	1.000 ea
RA334092	RA 39T032Y375G1	1.000 ea
HA6016	ADAPTER, CAST CONDUIT BOX	1.000 ea
09CB3003	CB W/1.75" DIA LD HL - 37, 39, 307 & 309	1.000 ea
51XW2520A12	.25-20 X .75, TAPTITE II, HEX WSHR SLTD	2.000 ea
WD1000B16	T&B CX70TN OR L70P TERMINAL LUG	1.000 ea
59XW2520G07	.25-20X.44,HEX SER WSHR,TAPTITE 2,GREEN	1.000 ea
39EP3200A02	FR E P, MACH - DR CVR MTG	1.000 ea
XY3816A12	3/8-16 FINISHED NUT W/SERRATIONS	4.000 ea
HW5100A08	W3118-035 WVY WSHR (WB)	1.000 ea
10XN2520K28	1/4-20 X 1.75" HX HD SCRWGRADE 5, ZINC P	4.000 ea
HW1001A25	LOCKWASHER 1/4, ZINC PLT .493 OD, .255 I	4.000 ea
39EP3400A01	STD FACE MTD ENDPLATE 309 BRG	1.000 ea
HA3154A10	THRUBOLT STUD 3/8-16 X 18.250"	4.000 ea
XY3816A12	3/8-16 FINISHED NUT W/SERRATIONS	4.000 ea
39AD2002D01	BAFFLE PLATE,"X" DIM=0.31 OPEN SLOT BAND	1.000 ea
39FH4500A01	DRIP COVER, STAMPED	1.000 ea
10XN2520K16	1/4-20 X 1" HX HD SCRW GRADE 5, ZINC P	2.000 ea
HA2001B08	SPL SPACER FOR AIR DEFLECTOR .50 O.D. X	2.000 ea
09CB3501SP	CONDUIT BOX LID FOR 09CB3001 & 09CB3002	1.000 ea
51XW2520A12	.25-20 X .75, TAPTITE II, HEX WSHR SLTD	2.000 ea
HW2501G25	KEY, 3/8 SQ X 2.875	1.000 ea
PK6016	BASELESS FOOT BRACKET FOR 39 & 40 FRAME	3.000 ea
10XN5013K20	1/2-13 X 1.25 LON HEX HD SCREW SAME AS	2.000 ea
HW1000A50	1/2 SAE FLAT WASHERS	2.000 ea
XY3816A12	3/8-16 FINISHED NUT W/SERRATIONS	1.000 ea
HW1001A38	LOCKWASHER 3/8, ZINC PLT .688 OD, .382 I	1.000 ea
HW4500A03	GREASE FITTING, .125 NPT 1610(ALEMITE) 8	1.000 ea
HW4500A20	1/8NPT SL PIPE PLUG	1.000 ea
HA4051A00	PLASTIC CAP FOR GREASE FITTING	1.000 ea
MG1050Y01	CELEROL BALDOR GOLD *** NLA IN 5 GALLON	0.050 ga

MJ1000A02	GREASE, POLYREX EM EXXON	0.030 lb
HW4500A03	GREASE FITTING, .125 NPT 1610(ALEMITE) 8	1.000 ea
HW4500A20	1/8NPT SL PIPE PLUG	1.000 ea
HA4051A00	PLASTIC CAP FOR GREASE FITTING	1.000 ea
85XU0407S04	4X1/4 U DRIVE PIN STAINLESS	2.000 ea
LB1624	COMBINED WARNING LABEL, ISO/ANSI PICTOGR	1.000 ea
LC0181	CONNECTION LABEL	1.000 ea
NP3554LUA	SS SUPER-E VPWM INV READY,CURUS-EEV,PREM	1.000 ea
40PA1000	PACKAGING GROUP	1.000 ea
MN416A01	TAG-INSTAL-MAINT no wire (2500bx)4/22	1.000 ea
LD7020D09	LEAD SET, 12AWG, 9 LEAD, 20" LONG LEADS	1.000 ea

AC Induction Motor Performance Data

Record # 93498

Typical performance - not guaranteed values

Winding: 39WGY375-R001		Type: 3948M		Enclosure: OPSB	
Nameplate Data			460 V, 60 Hz: High Voltage Connection		
Rated Output (HP)	15	Full Load Torque	44.57 LB-FT		
Volts	230/460	Start Configuration	direct on line		
Full Load Amps	36/18	Breakdown Torque	171 LB-FT		
R.P.M.	1770	Pull-up Torque	79.1 LB-FT		
Hz	60	Locked-rotor Torque	100 LB-FT		
NEMA Design Code	A	Starting Current	137 A		
Service Factor (S.F.)	1.15	No-load Current	7.62 A		
NEMA Nom. Eff.	93	Line-line Res. @ 25°C	0.5794 Ω		
Rating - Duty	40C AMB-CONT	Temp. Rise @ Rated Load	29°C		
S.F. Amps		Temp. Rise @ S.F. Load	35°C		
		Locked-rotor Power Factor	32.8		

Load Characteristics 460 V, 60 Hz, 15 HP

% of Rated Load	25	50	75	100	125	150	S.F.
Power Factor	45	68	78	83	86	87	85
Efficiency	88.6	92.6	93.3	93.1	92.5	91.7	92.7
Speed	1794.2	1788	1781.2	1773.7	1766.3	1758.2	1769
Line amperes	8.77	11.2	14.5	18.2	22.1	26.4	20.5

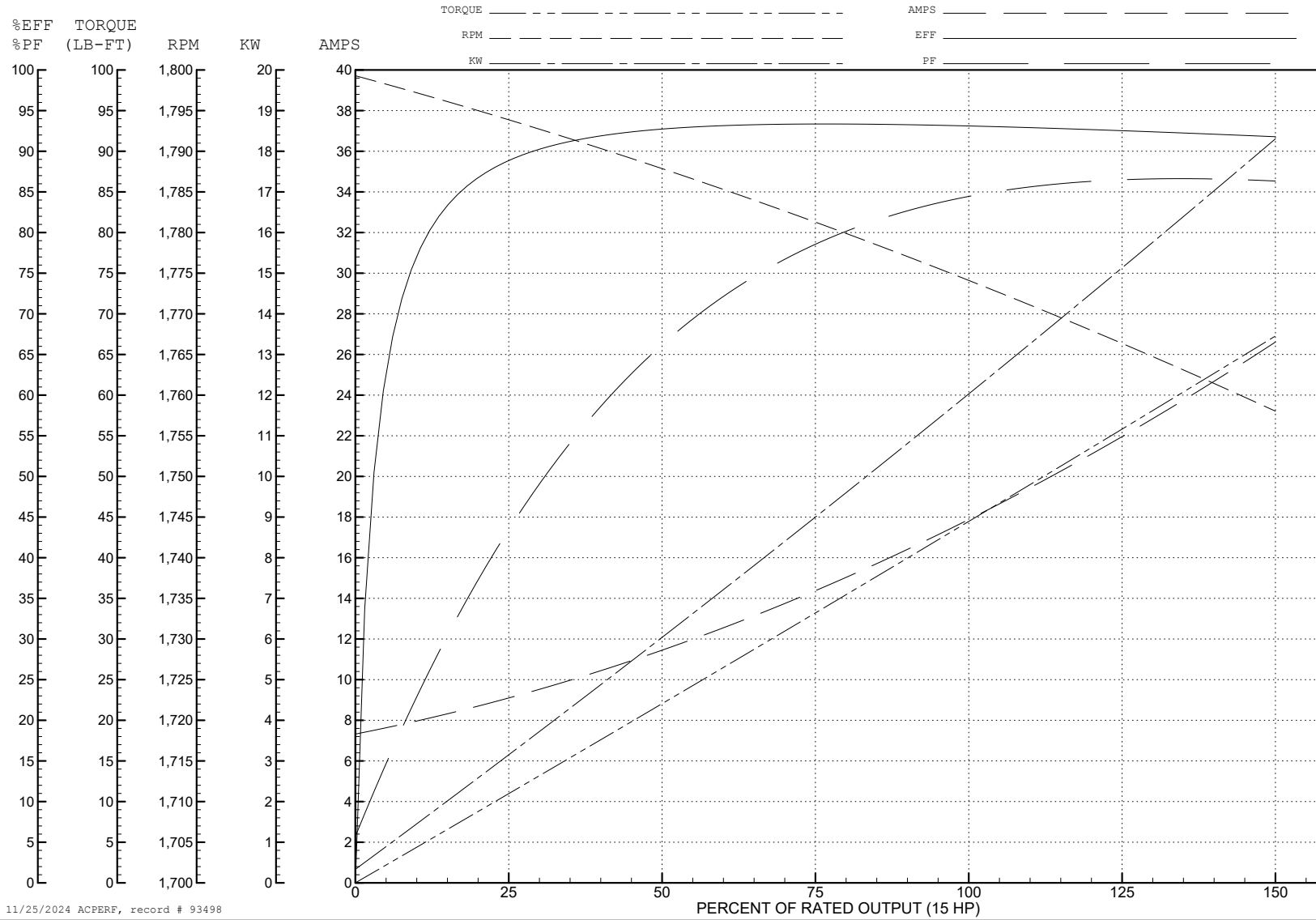
ABB Motors and Mechanical Inc.

WINDING # 39WGY375

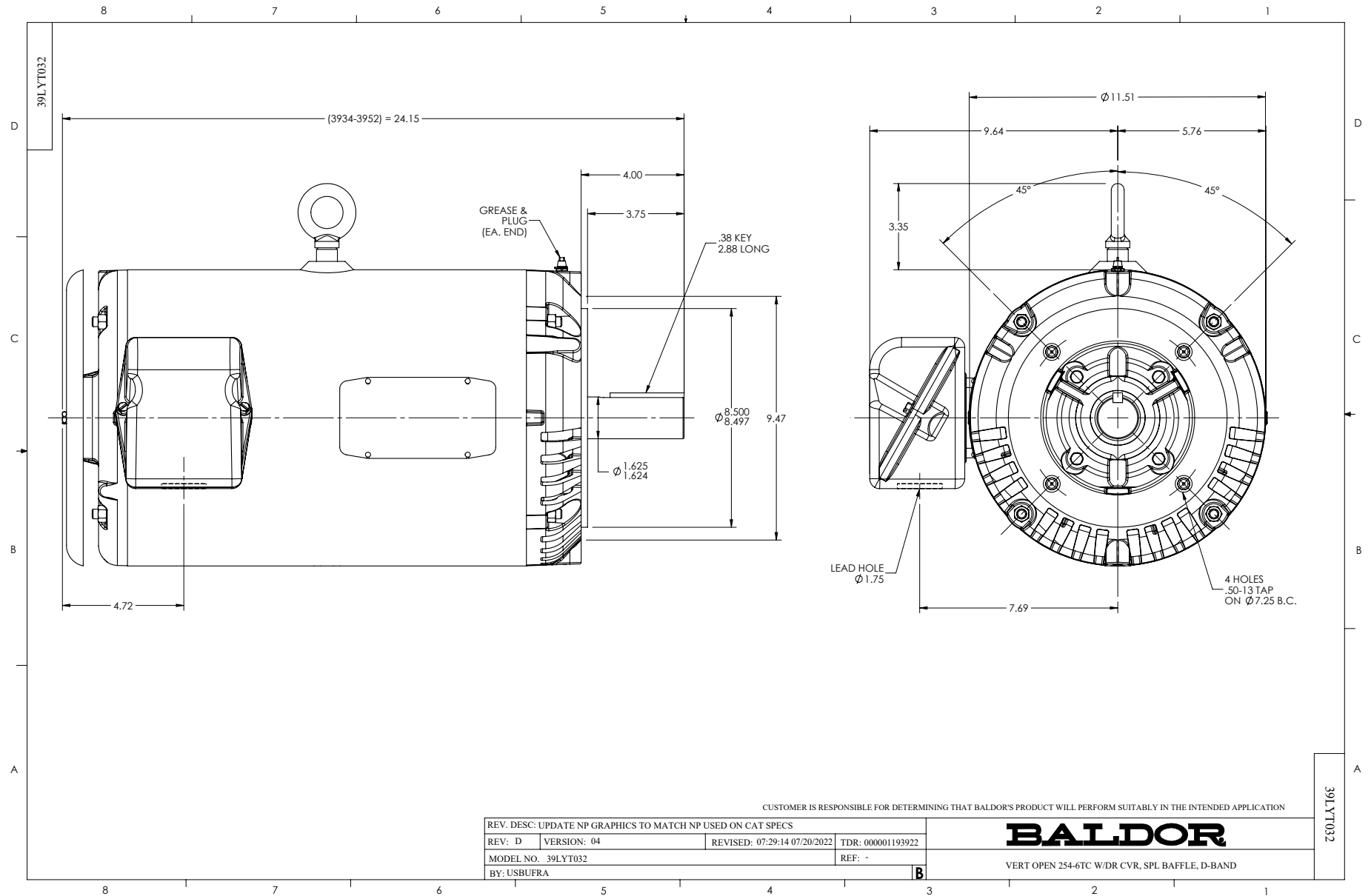
Typical performance - not guaranteed values.

15 HP 3 PH 60 HZ 1770 RPM 460 V 3948M

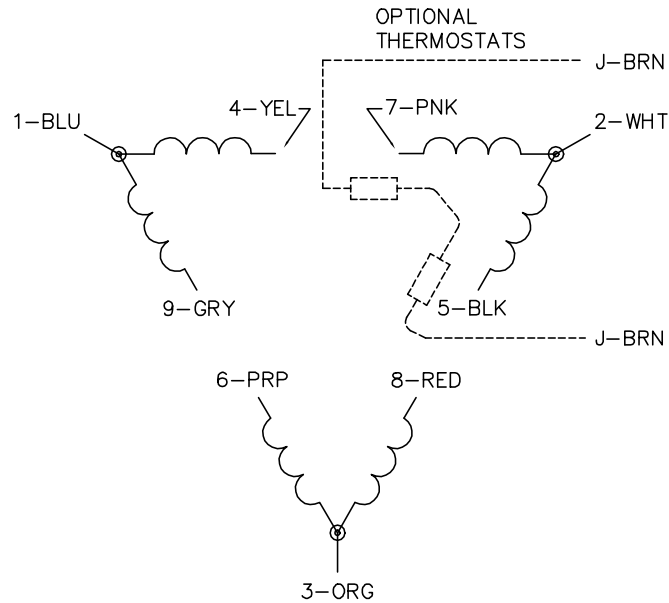
TORQUES (LB-FT): PO=171 PU=79.1 LR=100 LRA=137



11/25/2024 ACPERF, record # 93498



CD0180



LOW VOLTAGE
(2D)



HIGH VOLTAGE
(1D)



NOTES:

1. INTERCHANGE ANY TWO LINE LEADS TO REVERSE ROTATION.
2. OPTIONAL THERMOSTATS ARE PROVIDED WHEN SPECIFIED.
3. ACTUAL NUMBER OF INTERNAL PARALLEL CIRCUITS MAY BE A MULTIPLE OF THOSE SHOWN ABOVE.
4. LEAD COLORS ARE OPTIONAL. LEADS MUST ALWAYS BE NUMBERED AS SHOWN.

CD0180

REV. DESC: ADD CLASS CONN00000007		
REV. LTR: D	VERSION: 01	TDR: 000001099922
FILE: \AAA\00005\148	REVISED: 10: 25: 29 02/19/2019	BY: ENBRIRO
MTL: -	© □	

BALDOR - RELIANCE®

3PH, DV, 9 LEADS, DELTA CONNECTION

SH 1 of 1