

BALDOR • RELIANCE

Customer information packet

VEM2531T

25HP, 1775RPM, 3PH, 60HZ, 284TC, 4050M, ODP, F1

Specifications

Enclosure	ODP
Frame	284TC
Frame Material	Steel
Frequency	60.00 Hz
Motor Letter Type	Three Phase
Output @ Frequency	25.000 HP @ 60 HZ
Phase	3
Synchronous Speed @ Frequency	1800 RPM @ 60 HZ
Voltage @ Frequency	460.0 V @ 60 HZ 230.0 V @ 60 HZ
Agency Approvals	CSA EEV NEMA PREMIUM NEMA_PREMIUM UR
Ambient Temperature	40 °C
Auxillary Box	No Auxillary Box
Auxillary Box Lead Termination	None
Base Indicator	No Mounting
Bearing Grease Type	Polyrex EM (-20F +300F)
Blower	None
Current @ Voltage	64.000 A @ 208.0 V 60.000 A @ 230.0 V 30.000 A @ 460.0 V
Design Code	A
Drip Cover	Drip Cover
Duty Rating	CONT
Efficiency @ 100% Load	93.6 %
Electrically Isolated Bearing	Not Electrically Isolated
Feedback Device	NO FEEDBACK
Front Shaft Indicator	None
Heater Indicator	No Heater
High Voltage Full Load Amps	30.0 a

Part detail

Revision	D
Type	AC
Mech. spec.	40L071
Base	
Status	PRD/A
Elec. spec.	40WGX806
Layout	40LYL071
Eff. date	06-27-2024
CD Diagram	CD0005
Poles	04
Leads	9#10
Proprietary	False
Created date	02-10-2021

Insulation Class	F
Inverter Code	Inverter Ready
KVA Code	G
Lifting Lugs	Standard Lifting Lugs
Locked Bearing Indicator	Locked Bearing
Motor Lead Quantity/Wire Size	9 @ 10 AWG
Motor Lead Termination	Flying Leads
Motor Standards	NEMA
Motor Type	4050M
Mounting Arrangement	F1
Number of Poles	4
Overall Length	26.71 IN
Power Factor	82
Product Family	General Purpose
Pulley End Bearing Type	Ball
Pulley Face Code	C-Face
Pulley Shaft Indicator	Standard
Rodent Screen	None
Service Factor	1.15
Shaft Diameter	1.875 IN
Shaft Ground Indicator	No Shaft Grounding
Shaft Rotation	Reversible
Shaft Slinger Indicator	No Slinger
Speed	1775 rpm
Speed Code	Single Speed
Starting Method	Direct on line
Thermal Device - Bearing	None
Thermal Device - Winding	None
Vibration Sensor Indicator	No Vibration Sensor
Winding Thermal 1	None
Winding Thermal 2	None

Nameplate

NP3554LUA										
CAT.NO.	VEM2531T			P/N					ENCL	ODP
SPEC.	40L071X806G1	CC	010A	FRAME		284TC	SER.NO.			
HP	25	CLASS		F	HZ	60				
RPM	1775	PH	3	DES		A				
VOLTS	230/460			CODE		G	ODE BRG	6309	DE BRG	6311
AMPS	60/30									
RATING	40C AMB-CONT			NEMA-NOM-EFF		93.6	GREASE	POLYREX EM		
PF	82	SER.F.	1.15	CT30-60(2:1) VT3-60(20:1)						
USABLE AT	50HZ 25HP 190/380V 72/36A			SF 1.0						
HTR-VOLTS	HTR-AMPS	MAX. SPACE HEATER TEMP.								

Parts list

Part number	Description	Quantity
SA390485	SA 40L071X806G1	1.000 ea
RA380936	RA 40L071X806G1	1.000 ea
HA6017	CAST ADAPTER, 40,42 KOBX	1.000 ea
19XW3118A12	.31-18 X .75 HEX WASHER HEAD TAPTITE II	2.000 ea
HW1001A31	LOCKWASHER 5/16, ZINC PLT.591 OD, .319 I	2.000 ea
09CB3000A03	SPL 309 CONDUIT BOX	1.000 ea
19XW3118A12	.31-18 X .75 HEX WASHER HEAD TAPTITE II	4.000 ea
HW1001A31	LOCKWASHER 5/16, ZINC PLT.591 OD, .319 I	4.000 ea
WD1000B16	T&B CX70TN OR L70P TERMINAL LUG	1.000 ea
51XF2520A08	SCREW, HEX SER SLT HD, ZN 1/4-20 X .50 L	1.000 ea
40EP3200A01	STD FREP OPEN 309 BRG W/DRIP COVER	1.000 ea
HW5100A11	W3917-042 WVY WSHR (WB)	1.000 ea
40EP1400A02	PU ENDPLATE, MACH	1.000 ea
HA4051A00	PLASTIC CAP FOR GREASE FITTING	1.000 ea
10XN3118K40	5/16-18 X 2.25" HEX HD, GRADE 5	4.000 ea
HW1001A31	LOCKWASHER 5/16, ZINC PLT.591 OD, .319 I	4.000 ea
HA3159A08	THRUBOLT- .38-16 X 20.00 LONG STUD	4.000 ea
XY3816A12	3/8-16 FINISHED NUT W/SERRATIONS	8.000 ea
40FH2500A01	SP'L DRIP COVER MODEL 40- OPEN	1.000 ea
10XN2520K12	1/4-20 X.75 GRD 5	2.000 ea
HW1001A25	LOCKWASHER 1/4, ZINC PLT .493 OD, .255 I	2.000 ea
09CB3500SP	CONDUIT BOX LID, CAST	1.000 ea
51XW2520A12	.25-20 X .75, TAPTITE II, HEX WSHR SLTD	4.000 ea
HW2501H28	KEY, 1/2 SQ X 3.250	1.000 ea
HA4051A00	PLASTIC CAP FOR GREASE FITTING	1.000 ea
HW4500A03	GREASE FITTING, .125 NPT 1610(ALEMITE) 8	1.000 ea
HW4500A20	1/8NPT SL PIPE PLUG	1.000 ea
MJ1000A02	GREASE, POLYREX EM EXXON	0.050 lb
40AD2002A01	LEXAN BAFFLE 40 FR OPEN	1.000 ea
HW4500A03	GREASE FITTING, .125 NPT 1610(ALEMITE) 8	1.000 ea
HW4500A20	1/8NPT SL PIPE PLUG	1.000 ea

MG1050Y01	CELEROL BALDOR GOLD *** NLA IN 5 GALLON	0.070 ga
85XU0407S04	4X1/4 U DRIVE PIN STAINLESS	4.000 ea
LC0005	CONN.DIA.,TY M,9-LD,DUAL VOLT,REVERSING	1.000 ea
NP3554LUA	SS SUPER-E VPWM INV READY,CURUS-EEV,PREM	1.000 ea
40PA1026	PACKAGING GROUP (VERT OF 40PA1000)	1.000 ea
MN416A01	TAG-INSTAL-MAINT no wire (2500bx)4/22	1.000 ea
LB1624	COMBINED WARNING LABEL, ISO/ANSI PICTOGR	1.000 ea

AC Induction Motor Performance Data

Record # 86832

Typical performance - not guaranteed values

Winding: 40WGX806-R003		Type: 4050M		Enclosure: ODP	
Nameplate Data			460 V, 60 Hz: High Voltage Connection		
Rated Output (HP)	25	Full Load Torque	73.81 LB-FT		
Volts	230/460	Start Configuration	direct on line		
Full Load Amps	60/30	Breakdown Torque	232 LB-FT		
R.P.M.	1775	Pull-up Torque	116 LB-FT		
Hz	60 Phase	3	Locked-rotor Torque	133 LB-FT	
NEMA Design Code	A KVA Code	G	Starting Current	192 A	
Service Factor (S.F.)	1.15	No-load Current	12.6 A		
NEMA Nom. Eff.	93.6 Power Factor	82	Line-line Res. @ 25°C	0.35407 Ω	
Rating - Duty	40C AMB-CONT	Temp. Rise @ Rated Load	28°C		
S.F. Amps		Temp. Rise @ S.F. Load	34°C		
		Locked-rotor Power Factor	35		

Load Characteristics 460 V, 60 Hz, 25 HP

% of Rated Load	25	50	75	100	125	150	S.F.
Power Factor	45	67	78	82	85	85	84
Efficiency	89.4	93.1	93.8	93.6	93	92.1	93.2
Speed	1794.8	1789.5	1783.7	1777.6	1771	1763.2	1774
Line amperes	14.5	18.6	24.1	30.3	37.2	44.6	34.4

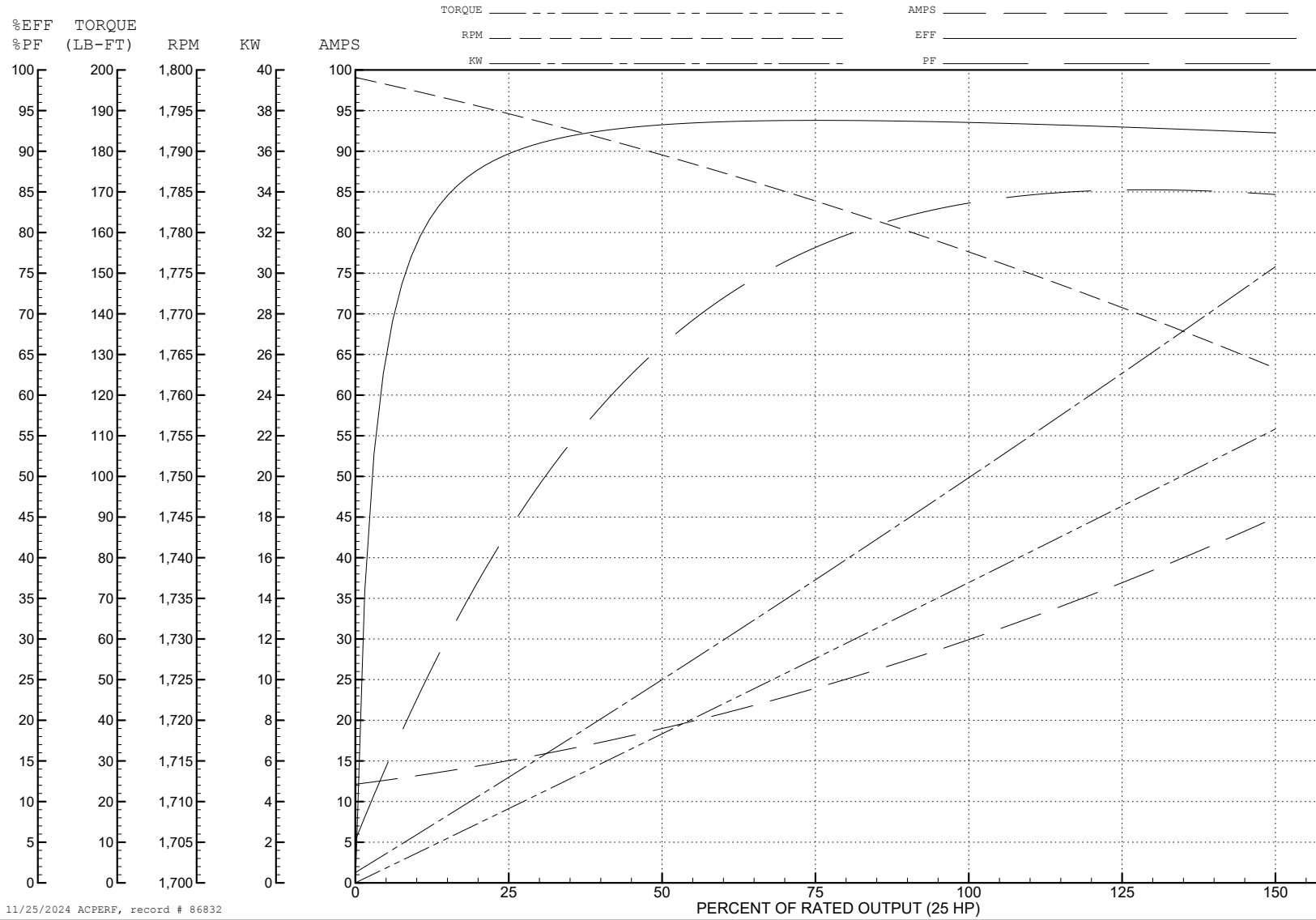
ABB Motors and Mechanical Inc.

WINDING # 40WGx806

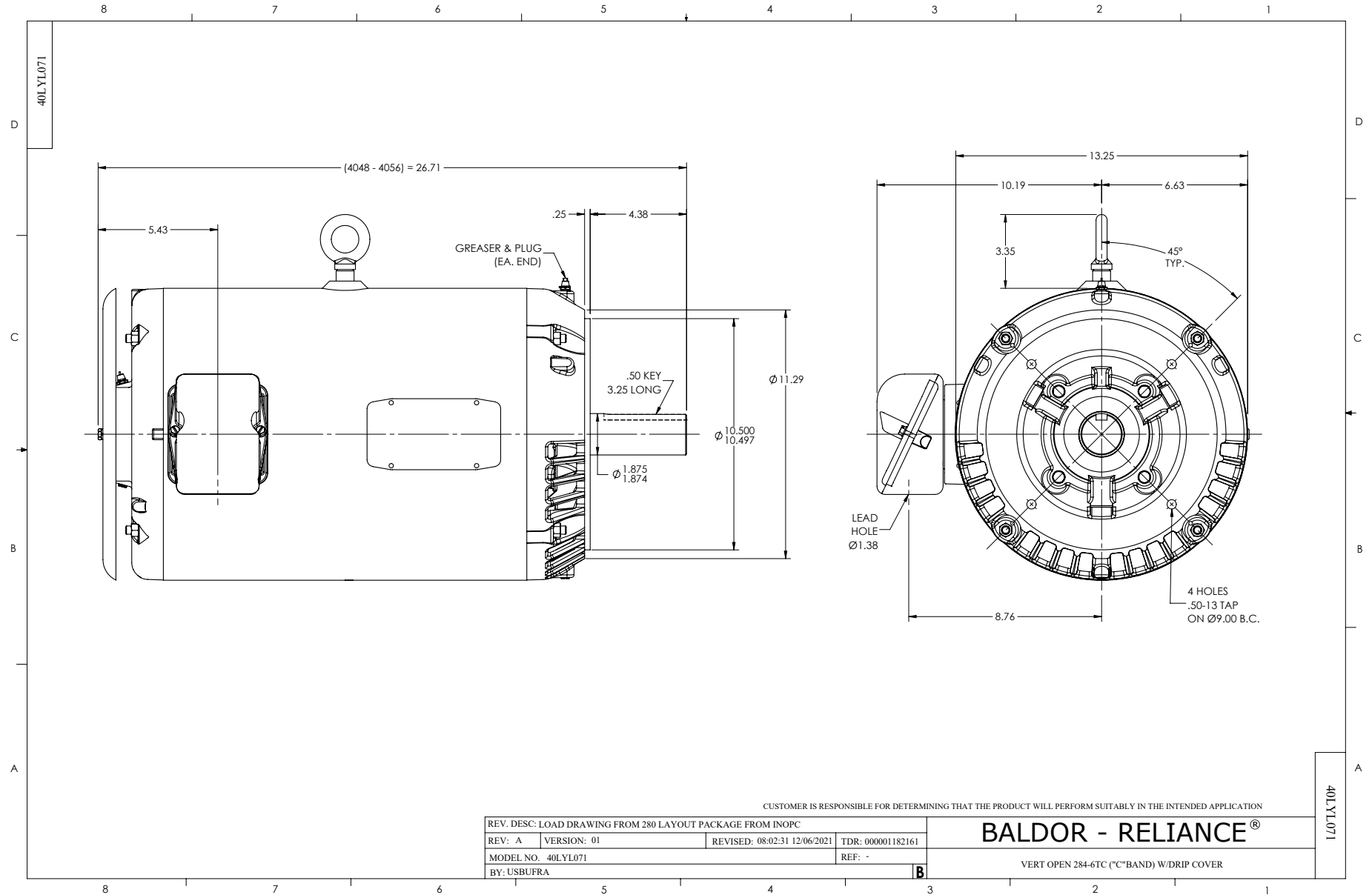
Typical performance - not guaranteed values.

25 HP 3 PH 60 HZ 1775 RPM 460 V 4050M

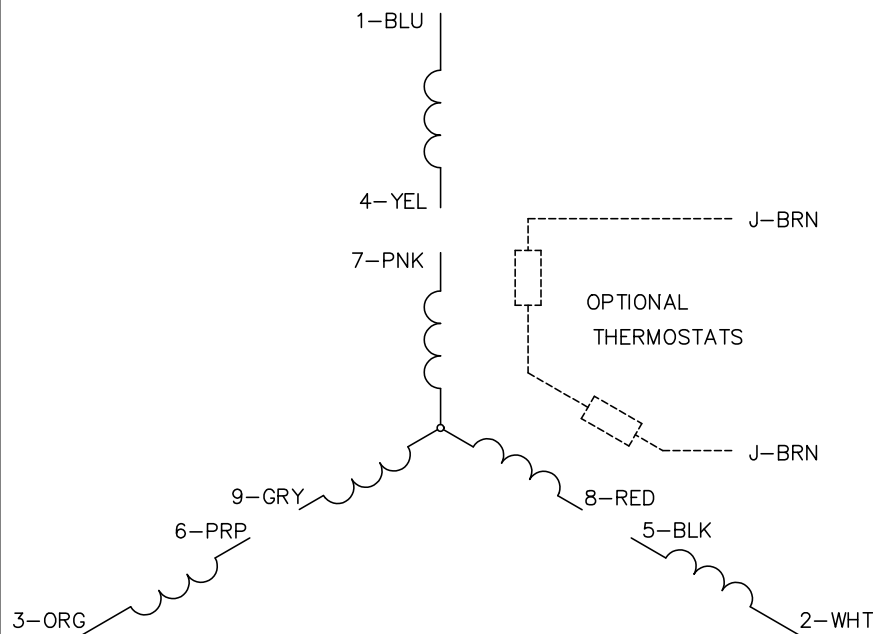
TORQUES (LB-FT): PO=232 PU=116 LR=133 LRA=192



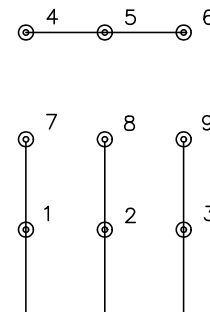
11/25/2024 ACPERF, record # 86832



CD0005

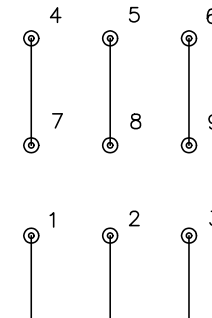


LOW VOLTAGE
(2Y)



LINE

HIGH VOLTAGE
(1Y)



LINE

NOTES:

1. INTERCHANGE ANY TWO LINE LEADS TO REVERSE ROTATION.
2. OPTIONAL THERMOSTATS ARE PROVIDED WHEN SPECIFIED.
3. ACTUAL NUMBER OF INTERNAL PARALLEL CIRCUITS MAY BE A MULTIPLE OF THOSE SHOWN ABOVE.
4. LEAD COLORS ARE OPTIONAL. LEADS MUST ALWAYS BE NUMBERED AS SHOWN.

REV. DESC: REVISE TO SHOW OPTIONAL COLORS			
REV. LTR: E	BY: JLP	REVISED: 01/19/99 10:15	TDR: 0171435
S00000		FILE: AAA00005140	MDL: -
		MTL: -	

BALDOR ELECTRIC Co.

3PH, DV, 9 LEADS

CD0005