

BALDOR • RELIANCE

Customer information packet

VEM3557

1.5HP, 1165RPM, 3PH, 60HZ, 56C, 3632M, TEFC, F1

Class - None

Division - Not Applicable

Copyright © All product information within this document is subject to ABB Motors and Mechanical Inc. copyright © protection, unless otherwise noted.

11/24/2024 10:43:57 PM

Specifications

| | |
|--------------------------------|---|
| Enclosure | TEFC |
| Frame | 56C |
| Frame Material | Steel |
| Frequency | 60.00 Hz |
| Haz Area Class and Group | None |
| Haz Area Division | Not Applicable |
| Motor Letter Type | Three Phase |
| Output @ Frequency | 1.500 HP @ 60 HZ |
| Phase | 3 |
| Synchronous Speed @ Frequency | 1200 RPM @ 60 HZ |
| Voltage @ Frequency | 230.0 V @ 60 HZ 460.0 V @ 60 HZ |
| Agency Approvals | CSA EEV CURUSEEV NEMA PREMIUM NEMA_PREMIUM UR |
| Ambient Temperature | 40 °C |
| Auxillary Box | No Auxillary Box |
| Auxillary Box Lead Termination | None |
| Base Indicator | No Mounting |
| Bearing Grease Type | Polyrex EM (-20F +300F) |
| Blower | None |
| Current @ Voltage | 4.800 A @ 230.0 V 5.000 A @ 208.0 V 2.400 A @ 460.0 V |
| Design Code | B |
| Drip Cover | No Drip Cover |
| Duty Rating | CONT |
| Efficiency @ 100% Load | 87.5 % |
| Electrically Isolated Bearing | Not Electrically Isolated |
| Feedback Device | NO FEEDBACK |

Part detail

| | |
|--------------|------------|
| Revision | E |
| Type | AC |
| Mech. spec. | 36J035 |
| Base | |
| Status | PRD/A |
| Elec. spec. | 36WGS916 |
| Layout | 36LYJ035 |
| Eff. date | 05-01-2024 |
| CD Diagram | CD0005 |
| Poles | 06 |
| Leads | 9#16 |
| Proprietary | False |
| Created date | 04-30-2015 |

| | |
|-------------------------------|--------------------|
| Front Face Code | Standard |
| Front Shaft Indicator | None |
| Heater Indicator | No Heater |
| High Voltage Full Load Amps | 2.4 a |
| Insulation Class | F |
| Inverter Code | Inverter Ready |
| KVA Code | K |
| Lifting Lugs | No Lifting Lugs |
| Locked Bearing Indicator | Locked Bearing |
| Motor Lead Exit | Ko Box |
| Motor Lead Quantity/Wire Size | 9 @ 16 AWG |
| Motor Lead Termination | Flying Leads |
| Motor Standards | NEMA |
| Motor Type | 3632M |
| Mounting Arrangement | F1 |
| Number of Poles | 6 |
| Overall Length | 15.62 IN |
| Power Factor | 67 |
| Product Family | General Purpose |
| Pulley End Bearing Type | Ball |
| Pulley Face Code | C-Face |
| Pulley Shaft Indicator | Standard |
| Rodent Screen | None |
| Service Factor | 1.15 |
| Shaft Diameter | 0.625 IN |
| Shaft Extension Location | Pulley End |
| Shaft Ground Indicator | No Shaft Grounding |
| Shaft Rotation | Reversible |
| Shaft Slinger Indicator | No Slinger |
| Speed | 1165 rpm |
| Speed Code | Single Speed |
| Starting Method | Direct on line |
| Thermal Device - Bearing | None |
| Thermal Device - Winding | None |

| Vibration Sensor Indicator | No Vibration Sensor |
|-----------------------------------|----------------------------|
| Winding Thermal 1 | None |
| Winding Thermal 2 | None |

Nameplate

NP3441LUA

| | | | | | | | |
|-----------------------------------|------------------------------|-------------|-----------|------------|---|--------------|-------|
| CAT.NO. | VEM3557 | | | | | | |
| SPEC | 36J035S916G1 | | | | | | |
| HP | 1.5 | | | | | | |
| VOLTS | 230/460 | | | | | | |
| AMPS | 4.8/2.4 | | | | | | |
| RPM | 1165 | | | | | | |
| FRAME | 56C | | HZ | 60 | | PH | 3 |
| SF | 1.15 | CODE | K | DES | B | CLASS | F |
| NEMA NOM. EFF | 87.5 | PF | 67 | | | | |
| RATING | 40C AMB-CONT | | | | | | |
| CC | 010A | | | | | | |
| ENCL | TEFC | SER | | | | | |
| DE | 6206 | ODE | 6205 | | | | |
| VPWM INVERTER READY | | | | | | | |
| CT6-60H(10:1)VT3-60H(20:1) | 50Hz 1.5HP 190/380V 4.8/2.4A | | | | | | SF1.0 |

Parts list

| Part number | Description | Quantity |
|---------------|--|----------|
| SA300038 | SA 36J035S916G1 | 1.000 ea |
| RA287084 | RA 36J035S916G1 | 1.000 ea |
| 36FN3000C01SP | EXFN, PLASTIC, 5.25 OD, .912 ID | 1.000 ea |
| 36CB3004 | 36 CB CASTING W/1.09 DIA LEAD HOLE @ 6:0 | 1.000 ea |
| 36GS1000SP | GASKET-CONDUIT BOX, .06 THICK #SV-330 LE | 1.000 ea |
| 51XB1016A08 | 10-16X 1/2HXWSSLD SERTYB | 2.000 ea |
| 11XW1032G06 | 10-32 X .38, TAPTITE II, HEX WSHR SLTD U | 1.000 ea |
| HW3001B01 | BRASS CUP WASHER, FOR #10 SCREW | 1.000 ea |
| 36EP3104A01 | FREP MACH ASSEMBLY FOR ROUTING | 1.000 ea |
| HW4500A01 | 1641B(ALEMITE)400 UNIV, GREASE FITT | 1.000 ea |
| HW5100A05 | WVY WSHR F/205 & 304 BRGS | 1.000 ea |
| 36EP1301A01 | PU ENDPLATE, MACH | 1.000 ea |
| HW4500A01 | 1641B(ALEMITE)400 UNIV, GREASE FITT | 1.000 ea |
| 10XN2520A24 | 1/4-20X 1 1/2 HEX HD X | 4.000 ea |
| HW1001A25 | LOCKWASHER 1/4, ZINC PLT .493 OD, .255 I | 4.000 ea |
| 51XB1214A16 | 12-14X1.00 HXWSSLD SERTYB | 1.000 ea |
| 36FH4009A102 | IEC FH GREASER PRIMED | 1.000 ea |
| 51XW1032A06 | 10-32 X .38, TAPTITE II, HEX WSHR SLTD S | 3.000 ea |
| 36CB4516 | 750LIPPED CB LID - GALVANNEAL | 1.000 ea |
| 37GS1001 | GASKET, CONDUIT BOX LID, .06 THICK LEXID | 1.000 ea |
| 51XW0832A07 | 8-32 X .44, TAPTITE II, HEX WSHR SLTD SE | 4.000 ea |
| HW2501D13 | KEY, 3/16 SQ X 1.375 | 1.000 ea |
| HA7000A04 | KEY RETAINER 0.625 DIA SHAFTS | 1.000 ea |
| 85XU0407S04 | 4X1/4 U DRIVE PIN STAINLESS | 2.000 ea |
| MJ1000A02 | GREASE, POLYREX EM EXXON | 0.050 lb |
| HA3101A25 | THRUBOLT 1/4-20 X 11.000 OHIO ROD | 4.000 ea |
| MG1050Y01 | CELEROL BALDOR GOLD *** NLA IN 5 GALLON | 0.022 ga |
| LC0005E01 | CONN.DIA./WARNING LABEL (LC0005/LB1119N) | 1.000 ea |
| NP3441LUA | AL SUPER-E VPWM INV RDY,UL EEV,NEMA PREM | 1.000 ea |
| 36PA1001 | PKG GRP, PRINT PK1017A06 | 1.000 ea |
| PK3082 | STYROFOAM CRADLE | 1.000 ea |

MN416A01

TAG-INSTAL-MAINT no wire (2500bx)4/22

1.000 ea

AC Induction Motor Performance Data

Record # 38403

Typical performance - not guaranteed values

| Winding: 36WGS916-R004 | | Type: 3632M | | Enclosure: TEFC | |
|-------------------------------|--------------------------|--------------------|--|--------------------------|--|
| Nameplate Data | | | 460 V, 60 Hz: High Voltage Connection | | |
| Rated Output (HP) | 1.5 | | Full Load Torque | 6.86 LB-FT | |
| Volts | 230/460 | | Start Configuration | direct on line | |
| Full Load Amps | 4.8/2.4 | | Breakdown Torque | 23.8 LB-FT | |
| R.P.M. | 1165 | | Pull-up Torque | 12.5 LB-FT | |
| Hz | 60 Phase | 3 | Locked-rotor Torque | 15.3 LB-FT | |
| NEMA Design Code | B KVA Code | K | Starting Current | 15.8 A | |
| Service Factor (S.F.) | 1.15 | | No-load Current | 1.47 A | |
| NEMA Nom. Eff. | 87.5 Power Factor | 67 | Line-line Res. @ 25°C | 7.3716 Ω | |
| Rating - Duty | 40C AMB-CONT | | Temp. Rise @ Rated Load | 34°C | |
| S.F. Amps | | | Temp. Rise @ S.F. Load | 41°C | |
| | | | Locked-rotor Power Factor | 30 | |
| | | | Rotor inertia | 0.301 LB-FT ² | |

Load Characteristics 460 V, 60 Hz, 1.5 HP

| % of Rated Load | 25 | 50 | 75 | 100 | 125 | 150 | S.F. |
|------------------------|-----------|-----------|-----------|------------|------------|------------|-------------|
| Power Factor | 30 | 48 | 59 | 67 | 71 | 74 | 69 |
| Efficiency | 79.1 | 86 | 87.5 | 87.5 | 86.5 | 85.2 | 86.9 |
| Speed | 1192.2 | 1184.8 | 1176.8 | 1168.1 | 1158.2 | 1147.5 | 1162 |
| Line amperes | 1.57 | 1.77 | 2.07 | 2.43 | 2.88 | 3.36 | 2.7 |

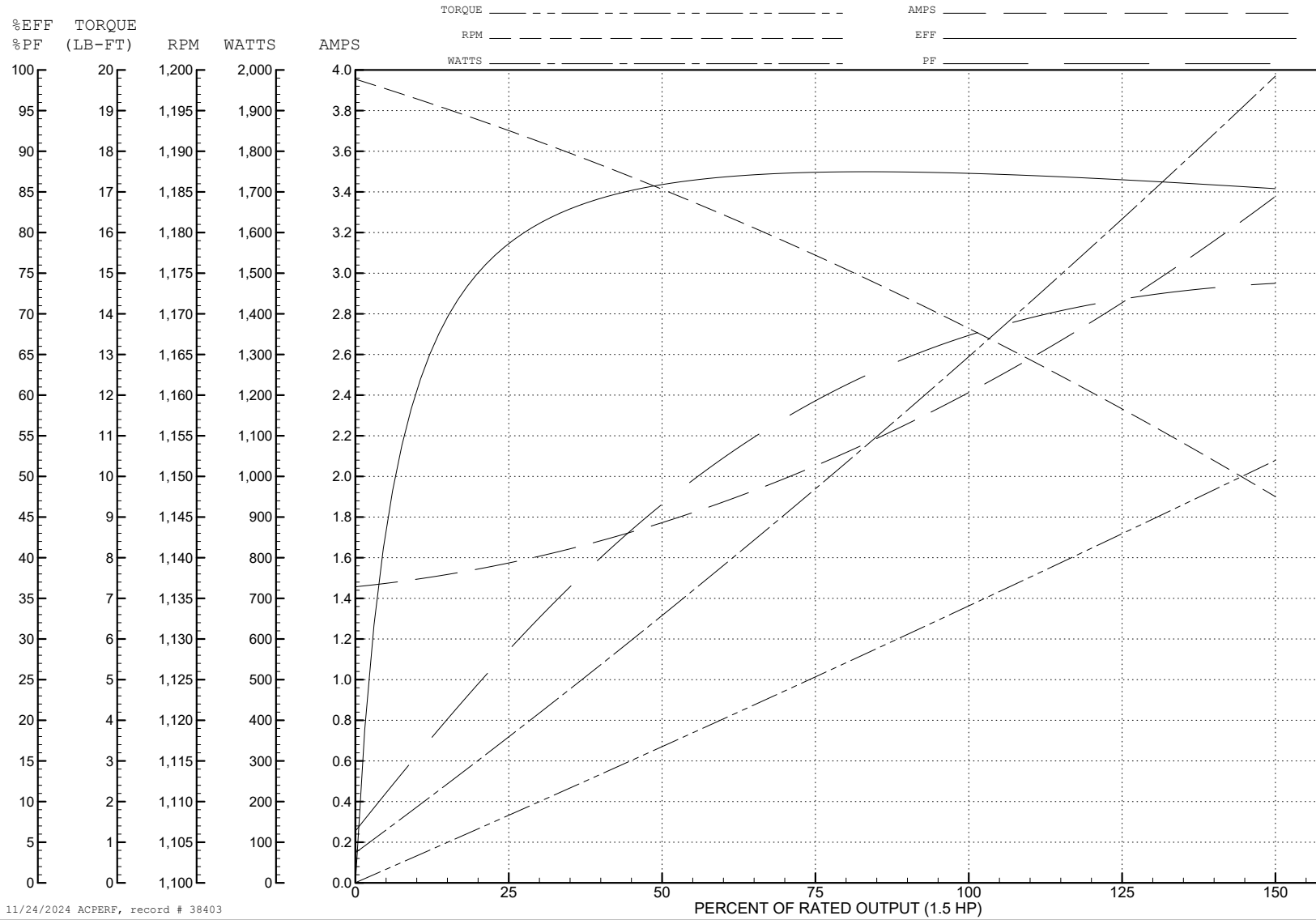
ABB Motors and Mechanical Inc.

WINDING # 36WGS916

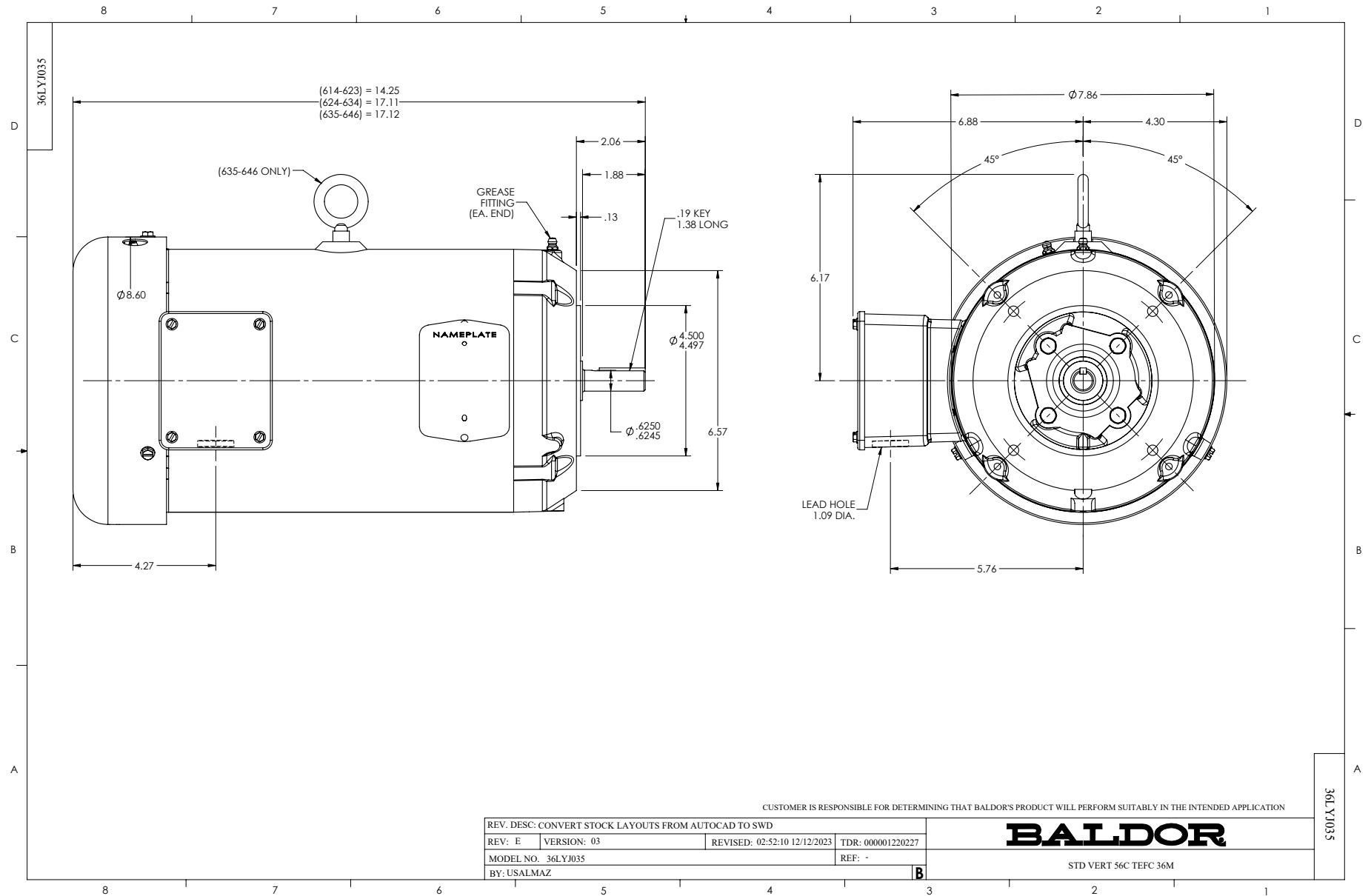
Typical performance - not guaranteed values.

1.5 HP 3 PH 60 HZ 1165 RPM 460 V 3632M

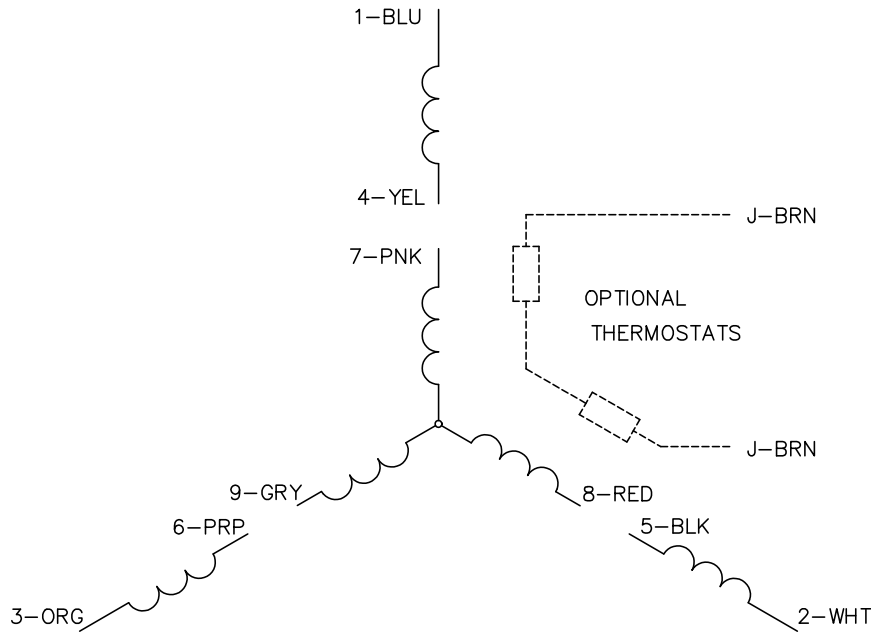
TORQUES (LB-FT): PO=23.8 PU=12.5 LR=15.3 LRA=15.8



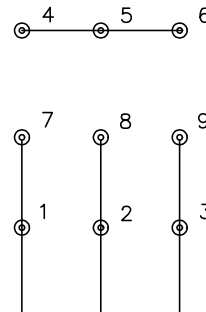
11/24/2024 ACPERF, record # 38403



CD0005

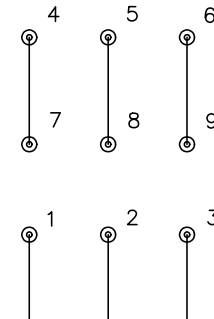


LOW VOLTAGE
(2Y)



LINE

HIGH VOLTAGE
(1Y)



LINE

NOTES:

1. INTERCHANGE ANY TWO LINE LEADS TO REVERSE ROTATION.
2. OPTIONAL THERMOSTATS ARE PROVIDED WHEN SPECIFIED.
3. ACTUAL NUMBER OF INTERNAL PARALLEL CIRCUITS MAY BE A MULTIPLE OF THOSE SHOWN ABOVE.
4. LEAD COLORS ARE OPTIONAL. LEADS MUST ALWAYS BE NUMBERED AS SHOWN.

CD0005

| | | | |
|---|---------|-------------------------|--------------|
| REV. DESC: REVISE TO SHOW OPTIONAL COLORS | | | |
| REV. LTR: E | BY: JLP | REVISED: 01/19/99 10:15 | TDR: 0171435 |
| S00000 | | FILE: AAA00005140 | MDL: - |
| | | MTL: - | |

BALDOR ELECTRIC Co.

3PH, DV, 9 LEADS