

BALDOR • RELIANCE

Customer information packet

VESSWDM3546-5

1HP, 1775RPM, 3PH, 60HZ, 56C, 3522M, TENV, F1, N

Class - None

Division - Not Applicable

Copyright © All product information within this document is subject to ABB Motors and Mechanical Inc. copyright © protection, unless otherwise noted.

11/24/2024 9:04:03 PM

Specifications

Enclosure	TENV
Frame	56C
Frame Material	Stainless Steel
Frequency	60.00 Hz
Haz Area Class and Group	None
Haz Area Division	Not Applicable
Motor Letter Type	Three Phase
Output @ Frequency	1.000 HP @ 60 HZ
Phase	3
Synchronous Speed @ Frequency	1800 RPM @ 60 HZ
Voltage @ Frequency	575.0 V @ 60 HZ
Agency Approvals	NEMA PREMIUM NEMA_PREMIUM UR CSA EEV
Ambient Temperature	40 °C
Auxillary Box	No Auxillary Box
Auxillary Box Lead Termination	None
Base Indicator	No Mounting
Bearing Grease Type	Polyrex EM (-20F +300F)
Blower	None
Current @ Voltage	1.300 A @ 575.0 V
Design Code	B
Drip Cover	No Drip Cover
Duty Rating	CONT
Efficiency @ 100% Load	85.5 %
Electrically Isolated Bearing	Not Electrically Isolated
Feedback Device	NO FEEDBACK
Front Shaft Indicator	None
Heater Indicator	No Heater
High Voltage Full Load Amps	1.3 a
Insulation Class	F

Part detail

Revision	B
Type	AC
Mech. spec.	35V824
Base	
Status	PRD/A
Elec. spec.	35WGG198
Layout	35LYV824
Eff. date	10-08-2024
CD Diagram	CD0006
Poles	04
Leads	3#18 Y
Proprietary	False
Created date	02-23-2023

Inverter Code	Inverter Ready
KVA Code	M
Lifting Lugs	No Lifting Lugs
Locked Bearing Indicator	Locked Bearing
Motor Finish	UNPAINTED
Motor Lead Quantity/Wire Size	3 @ 18 AWG
Motor Lead Termination	Flying Leads
Motor Standards	NEMA
Motor Type	3522M
Mounting Arrangement	F1
Number of Poles	4
Overall Length	12.09 IN
Power Factor	70
Product Family	Wash Down All Stainless Steel
Pulley End Bearing Type	Ball
Pulley Face Code	C-Face
Pulley Shaft Indicator	Standard
Rodent Screen	None
Service Factor	1.00
Shaft Diameter	0.625 IN
Shaft Ground Indicator	No Shaft Grounding
Shaft Rotation	Reversible
Speed	1775 rpm
Speed Code	Single Speed
Starting Method	Direct on line
Thermal Device - Bearing	None
Thermal Device - Winding	None
Vibration Sensor Indicator	No Vibration Sensor
Winding Thermal 1	None
Winding Thermal 2	None

Nameplate

NP1953A05									
CAT.NO.	VESSWDM3546-5								
SPEC.	35V824G198								
HP	1								
VOLTS	575								
AMP	1.3								
RPM	1775								
FRAME	56C		HZ	60		PH	3		
SER.F.	1.00	CODE	M	DES	B	CLASS	F		
NEMA-NOM-EFF	85.5	PF	70						
RATING	40C AMB-CONT								
CC		USABLE AT 208V					N/A		
DE	6205	ODE							
ENCL	TENV	SN							
	10:1CT 20:1VT								

Parts list

Part number	Description	Quantity
SA415014	SA 35V824G198	1.000 ea
RA406783	RA 35V824G198	1.000 ea
NS2512A01	INSULATOR, CONDUIT BOX X	1.000 ea
35CB5001A08	CONDUIT BOX KIT, S/P 9-2 (ALL STAINLESS)	1.000 ea
HA5027A02	HA4054 T-DRAIN X2 BAGGED WITH LABEL	1.000 ea
11XW1032G06	10-32 X .38, TAPTITE II, HEX WSHR SLTD U	1.000 ea
HW3001B01	BRASS CUP WASHER, FOR #10 SCREW	1.000 ea
35EP1913A01	FRONT TENV 203 BRG NO GRSR S/P 9-2 (STAI	1.000 ea
HW4500S33	1/8 NPT STAINLESS #304 SS PLUG	3.000 ea
HW5100A03	WAVY WASHER (W1543-017)	1.000 ea
35EP1914A02	PU EP FOR LOCKED 6205 BRG	1.000 ea
HW4500S33	1/8 NPT STAINLESS #304 SS PLUG	3.000 ea
HW4606A02	JM CLIPPER/SEAL (LWE-0938-1624-AL23)	1.000 ea
12XN1032S22	10-32 X 1 3/8 SLOT HEX, STAINLESS STEEL	2.000 ea
HA1049A01	DUBO LOK WASHER SIZE 10 (NYLON LOCK SEAL	2.000 ea
HA1049A01	DUBO LOK WASHER SIZE 10 (NYLON LOCK SEAL	4.000 ea
HW2502D13	SS KEY, 3/16 SQ X 1.375	1.000 ea
HA7000A04	KEY RETAINER 0.625 DIA SHAFTS	1.000 ea
MJ5001A02	732 CL SEALANT 3 OZ DIXIE BEARING 289100	0.001 ea
PK3082	STYROFOAM CRADLE	1.000 ea
MN416A01	TAG-INSTAL-MAINT no wire (2500bx)4/22	1.000 ea
MJ1000A02	GREASE, POLYREX EM EXXON	0.050 lb
HA3100S14	THRUBOLT 10X32 X 8.875 302 OR 303 SS	4.000 ea
35PA1066	PKG GRP, PRINT PK1008A06	1.000 ea
FE-0000007	ZRTG FE ASSEMBLY	1.000 ea
PE-0000012	ZRTG PE ASSEMBLY	1.000 ea

AC Induction Motor Performance Data

Record # 31564

Typical performance - not guaranteed values

Winding: 35WGM813-R001		Type: 3524M		Enclosure: TENV	
Nameplate Data			575 V, 60 Hz: Single Voltage Motor		
Rated Output (HP)		1	Full Load Torque		3.02 LB-FT
Volts		575	Start Configuration		direct on line
Full Load Amps		1.2	Breakdown Torque		14.2 LB-FT
R.P.M.		1745	Pull-up Torque		8.67 LB-FT
Hz	60 Phase	3	Locked-rotor Torque		10.2 LB-FT
NEMA Design Code	B KVA Code	M	Starting Current		10.7 A
Service Factor (S.F.)		1.15	No-load Current		0.706 A
NEMA Nom. Eff.	85.5 Power Factor	76	Line-line Res. @ 25°C		25 Ω
Rating - Duty		40C AMB-CONT	Temp. Rise @ Rated Load		85°C
S.F. Amps			Temp. Rise @ S.F. Load		100°C
			Locked-rotor Power Factor		62
			Rotor inertia		0.142 LB-FT ²

Load Characteristics 575 V, 60 Hz, 1 HP

% of Rated Load	25	50	75	100	125	150	S.F.
Power Factor	32	53	67	76	81	86	79
Efficiency	76.2	83.6	85.9	85.6	85	82.8	85.2
Speed	1784	1774	1760	1744	1731	1698	1736
Line amperes	0.741	0.832	0.968	1.15	1.35	1.58	1.27

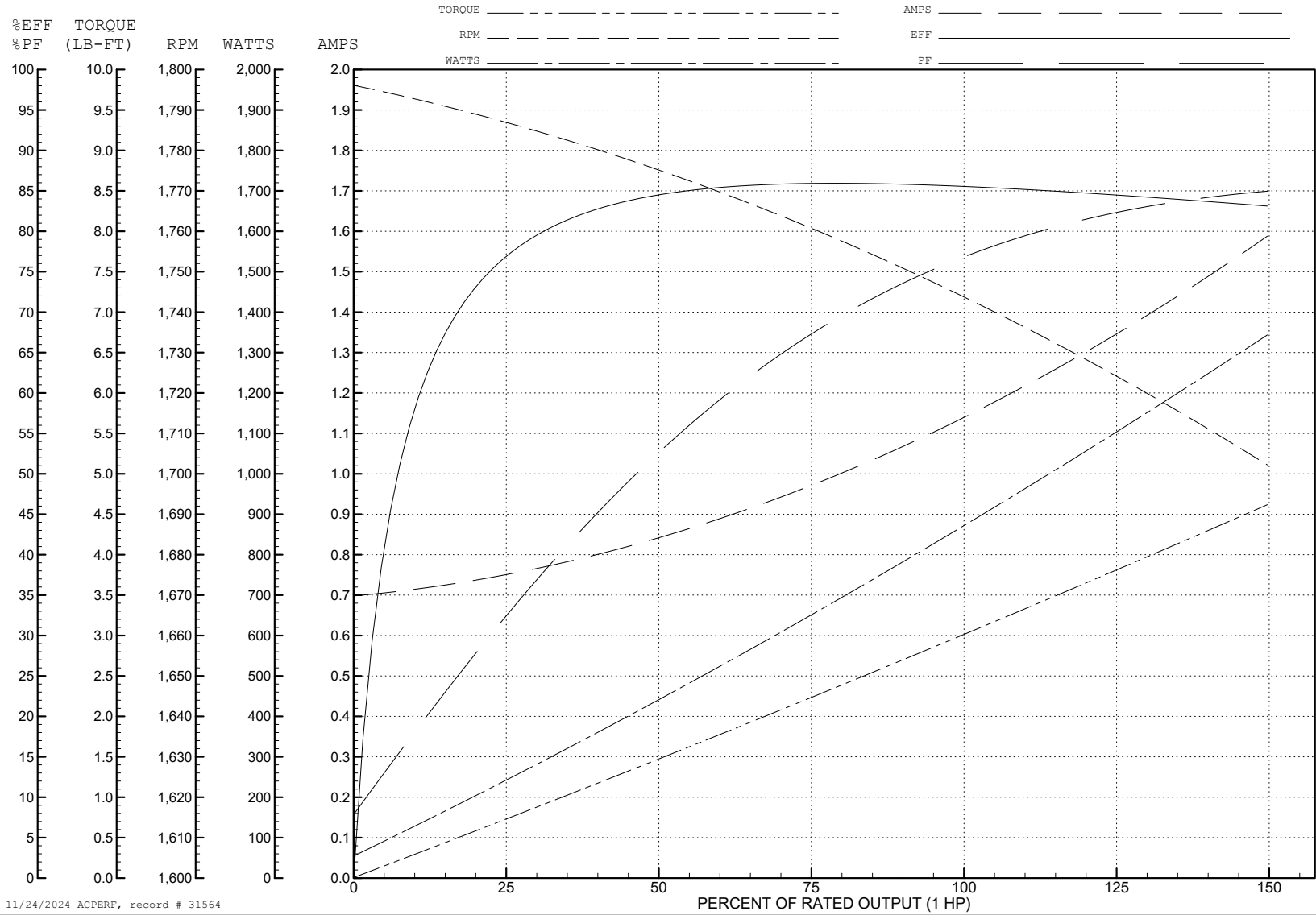
ABB Motors and Mechanical Inc.

WINDING # 35WGM813

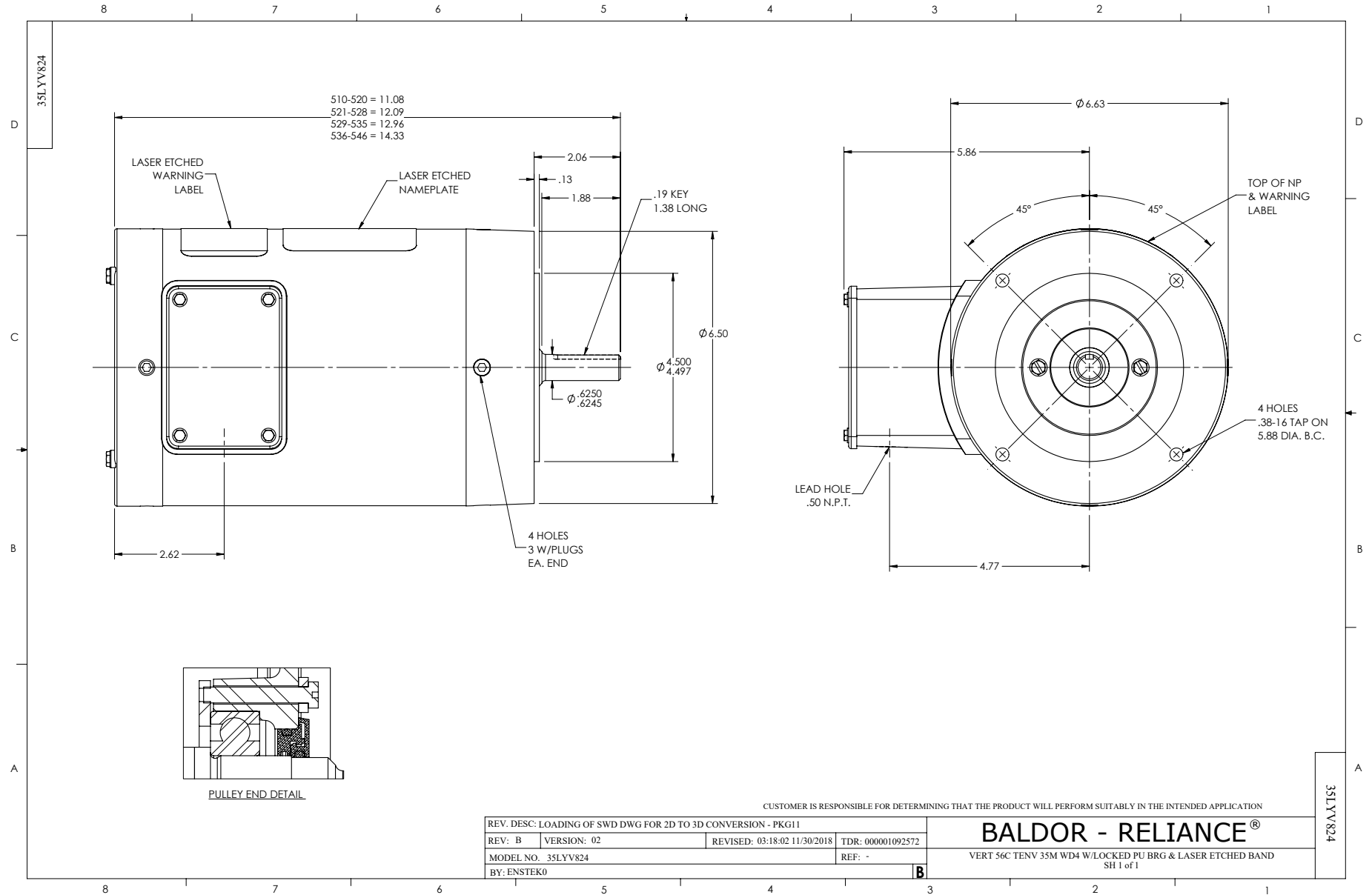
Typical performance - not guaranteed values.

1 HP 3 PH 60 HZ 1745 RPM 575 V 3524M

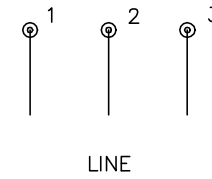
TORQUES (LB-FT): PO=14.2 PU=8.67 LR=10.2 LRA=10.7



11/24/2024 ACPERF, record # 31564



CD0006



NOTES:

1. THREE LEAD MOTOR MAY BE EITHER WYE CONNECTED OR DELTA CONNECTED.
2. INTERCHANGE ANY TWO LINE LEADS TO REVERSE ROTATION.
3. OPTIONAL THERMOSTATS ARE PROVIDED WHEN SPECIFIED.
4. ACTUAL NUMBER OF INTERNAL PARALLEL CIRCUITS MAY VARY.
5. LEAD COLORS ARE OPTIONAL. LEADS MUST BE NUMBERED AS SHOWN.

CD0006

REV. DESC: ADD CLASS CONN00000007		
REV. LTR: E	VERSION: 01	TDR: 000001099922
FILE: \AAA\00005\141	REVISED: 10:24:49 02/19/2019	BY: ENBRIRO
MTL: -		© □

BALDOR - RELIANCE®

3PH, SV, 3 LEADS, WYE OR DELTA CONNECTED

SH 1 of 1