

BALDOR • RELIANCE

Customer information packet

VESSWDM3554

1.5HP, 1770RPM, 3PH, 60HZ, 56C, 3524M, TEFC, F1

Class - None

Division - Not Applicable

Copyright © All product information within this document is subject to ABB Motors and Mechanical Inc. copyright © protection, unless otherwise noted.

11/24/2024 6:51:22 PM

Specifications

| | |
|--------------------------------|---|
| Enclosure | TEFC |
| Frame | 56C |
| Frame Material | Stainless Steel |
| Frequency | 60.00 Hz |
| Haz Area Class and Group | None |
| Haz Area Division | Not Applicable |
| Motor Letter Type | Three Phase |
| Output @ Frequency | 1.500 HP @ 60 HZ |
| Phase | 3 |
| Synchronous Speed @ Frequency | 1800 RPM @ 60 HZ |
| Voltage @ Frequency | 230.0 V @ 60 HZ 460.0 V @ 60 HZ |
| Agency Approvals | CSA EEV NEMA PREMIUM NEMA_PREMIUM UR |
| Ambient Temperature | 40 °C |
| Auxillary Box | No Auxillary Box |
| Auxillary Box Lead Termination | None |
| Base Indicator | No Mounting |
| Bearing Grease Type | Polyrex EM (-20F +300F) |
| Blower | None |
| Current @ Voltage | 4.640 A @ 208.0 V 4.600 A @ 230.0 V 2.300 A @ 460.0 V |
| Design Code | B |
| Drip Cover | No Drip Cover |
| Duty Rating | CONT |
| Efficiency @ 100% Load | 86.5 % |
| Electrically Isolated Bearing | Not Electrically Isolated |
| Feedback Device | NO FEEDBACK |
| Front Shaft Indicator | None |

Part detail

| | |
|--------------|------------|
| Revision | D |
| Type | AC |
| Mech. spec. | 35W179 |
| Base | |
| Status | PRD/A |
| Elec. spec. | 35WGL955 |
| Layout | 35LYW179 |
| Eff. date | 06-14-2024 |
| CD Diagram | CD0005 |
| Poles | 04 |
| Leads | 9#18 |
| Proprietary | False |
| Created date | 01-10-2022 |

| | |
|-------------------------------|-------------------------------|
| Heater Indicator | No Heater |
| High Voltage Full Load Amps | 2.3 a |
| Insulation Class | F |
| Inverter Code | Inverter Ready |
| KVA Code | M |
| Lifting Lugs | No Lifting Lugs |
| Locked Bearing Indicator | Locked Bearing |
| Motor Lead Quantity/Wire Size | 9 @ 18 AWG |
| Motor Lead Termination | Flying Leads |
| Motor Standards | NEMA |
| Motor Type | 3524M |
| Mounting Arrangement | F1 |
| Number of Poles | 4 |
| Overall Length | 13.34 IN |
| Power Factor | 72 |
| Product Family | Wash Down All Stainless Steel |
| Pulley End Bearing Type | Sealed Bearing |
| Pulley Face Code | C-Face |
| Pulley Shaft Indicator | Standard |
| Rodent Screen | None |
| Service Factor | 1.15 |
| Shaft Diameter | 0.625 IN |
| Shaft Ground Indicator | No Shaft Grounding |
| Shaft Rotation | Reversible |
| Shaft Slinger Indicator | No Slinger |
| Speed | 1770 rpm |
| Speed Code | Single Speed |
| Starting Method | Direct on line |
| Thermal Device - Bearing | None |
| Thermal Device - Winding | None |
| Vibration Sensor Indicator | No Vibration Sensor |
| Winding Thermal 1 | None |
| Winding Thermal 2 | None |

Nameplate

| NP1953A01 | | | | | | | | | |
|---------------------|---------------|-------------|-----------|------------|---|--------------|---|--|--|
| CAT.NO. | VESSWDM3554 | | | | | | | | |
| SPEC. | 35W179L955G1 | | | | | | | | |
| HP | 1.5 | | | | | | | | |
| VOLTS | 230/460 | | | | | | | | |
| AMP | 4.6/2.3 | | | | | | | | |
| RPM | 1770 | | | | | | | | |
| FRAME | 56C | | HZ | 60 | | PH | 3 | | |
| SER.F. | 1.15 | CODE | M | DES | B | CLASS | F | | |
| NEMA-NOM-EFF | 86.5 | PF | 72 | | | | | | |
| RATING | 40C AMB-CONT | | | | | | | | |
| CC | 010A | | | | | | | | |
| DE | 6205 | ODE | 6203 | | | | | | |
| ENCL | TEFC | SN | | | | | | | |
| | SFA 4.72/2.36 | | | | | | | | |

Parts list

| Part number | Description | Quantity |
|-------------|---|----------|
| SA402566 | SA 35W179L955G1 | 1.000 ea |
| RA393843 | RA 35W179L955G1 | 1.000 ea |
| 34FN3002B01 | EXTERNAL FAN, PLASTIC, .637/.639 HUB W/ INSULATOR, CONDUIT BOX X | 1.000 ea |
| NS2512A01 | INSULATOR, CONDUIT BOX X | 1.000 ea |
| 35CB5001A08 | CONDUIT BOX KIT, S/P 9-2 (ALL STAINLESS) | 1.000 ea |
| HA5027A02 | HA4054 T-DRAIN X2 BAGGED WITH LABEL | 1.000 ea |
| 11XW1032G06 | 10-32 X .38, TAPTITE II, HEX WSHR SLTD U | 1.000 ea |
| 35EP1913A02 | FR EP MADE FROM 35EP1913A01 | 1.000 ea |
| HW4500S33 | 1/8 NPT STAINLESS #304 SS PLUG | 3.000 ea |
| HW4606A01 | JM CLIPPER/SEAL (WDE-0667-1064-BH49) | 1.000 ea |
| HW5100A03 | WAVY WASHER (W1543-017) | 1.000 ea |
| 35EP1914A02 | PU EP FOR LOCKED 6205 BRG | 1.000 ea |
| HW4500S33 | 1/8 NPT STAINLESS #304 SS PLUG | 3.000 ea |
| HW4606A02 | JM CLIPPER/SEAL (LWE-0938-1624-AL23) | 1.000 ea |
| 12XN1032S22 | 10-32 X 1 3/8 SLOT HEX, STAINLESS STEEL | 2.000 ea |
| HA1049A01 | DUBO LOK WASHER SIZE 10 (NYLON LOCK SEAL) | 2.000 ea |
| HA1049A01 | DUBO LOK WASHER SIZE 10 (NYLON LOCK SEAL) | 4.000 ea |
| 51XB1214A16 | 12-14X1.00 HXWSSLD SERTYB | 1.000 ea |
| 35FH4005A39 | IEC FH NO GREASER DEBURR/CLEAN - SS | 1.000 ea |
| 10XN1032S06 | HEX HD CAP SCREW, SS | 3.000 ea |
| HW2502D13 | SS KEY, 3/16 SQ X 1.375 | 1.000 ea |
| HA7000A04 | KEY RETAINER 0.625 DIA SHAFTS | 1.000 ea |
| MJ5001A02 | 732 CL SEALANT 3 OZ DIXIE BEARING 289100 | 0.001 ea |
| MJ1000A02 | GREASE, POLYREX EM EXXON | 0.050 lb |
| HA3100S14 | THRUBOLT 10X32 X 8.875 302 OR 303 SS | 4.000 ea |
| 36PA1000 | PKG GRP, PRINT PK1016A06 | 1.000 ea |
| PK3082 | STYROFOAM CRADLE | 1.000 ea |
| MN416A01 | TAG-INSTAL-MAINT no wire (2500bx)4/22 | 1.000 ea |
| FE-0000007 | ZRTG FE ASSEMBLY | 1.000 ea |
| PE-0000012 | ZRTG PE ASSEMBLY | 1.000 ea |

AC Induction Motor Performance Data

Record # 95387

Typical performance - not guaranteed values

| Winding: 35WGL955-R001 | | Type: 3524M | | Enclosure: TEFC | |
|-------------------------------|--------------|----------------------------------|--|------------------------|--|
| Nameplate Data | | | 460 V, 60 Hz: High Voltage Connection | | |
| Rated Output (HP) | 1.5 | Full Load Torque | 4.48 LB-FT | | |
| Volts | 230/460 | Start Configuration | direct on line | | |
| Full Load Amps | 4.6/2.3 | Breakdown Torque | 18.8 LB-FT | | |
| R.P.M. | 1770 | Pull-up Torque | 9.6 LB-FT | | |
| Hz | 60 | Locked-rotor Torque | 12.6 LB-FT | | |
| NEMA Design Code | B | Starting Current | 19.7 A | | |
| Service Factor (S.F.) | 1.15 | No-load Current | 1.51 A | | |
| NEMA Nom. Eff. | 86.5 | Line-line Res. @ 25°C | 11.8 Ω | | |
| Rating - Duty | 40C AMB-CONT | Temp. Rise @ Rated Load | 48°C | | |
| S.F. Amps | 5/2.5 | Temp. Rise @ S.F. Load | 57°C | | |
| | | Locked-rotor Power Factor | 58.4 | | |
| | | Rotor inertia | 0.173 lb-ft ² | | |

Load Characteristics 460 V, 60 Hz, 1.5 HP

| % of Rated Load | 25 | 50 | 75 | 100 | 125 | 150 | S.F. |
|------------------------|-----------|-----------|-----------|------------|------------|------------|-------------|
| Power Factor | 31 | 49 | 63 | 72 | 78 | 81 | 76 |
| Efficiency | 75.1 | 83.5 | 86 | 86.5 | 85.8 | 84.8 | 86.1 |
| Speed | 1792 | 1785 | 1777 | 1769 | 1760 | 1750 | 1764 |
| Line amperes | 1.56 | 1.72 | 1.97 | 2.28 | 2.65 | 3.06 | 2.5 |

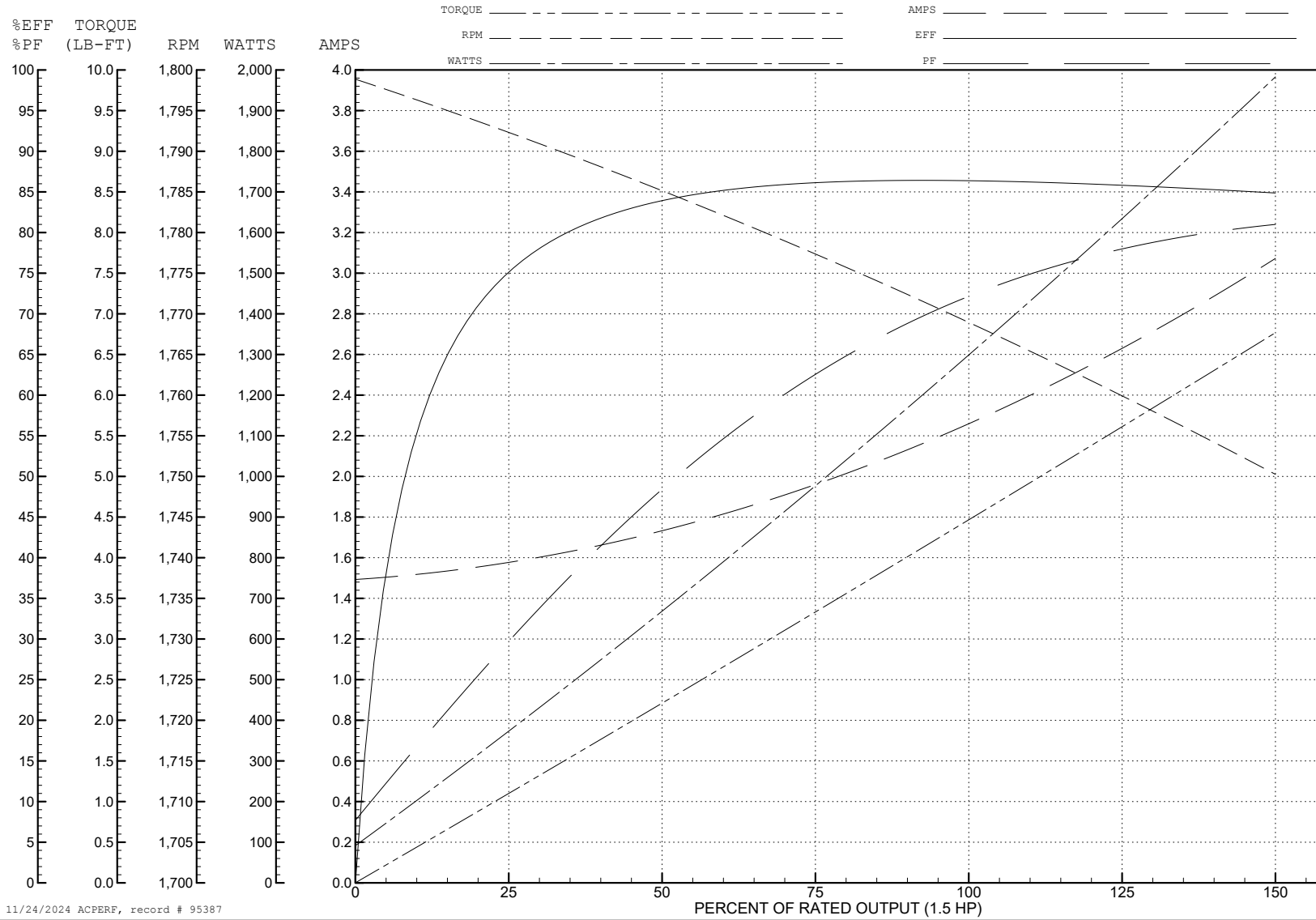
ABB Motors and Mechanical Inc.

WINDING # 35WGL955

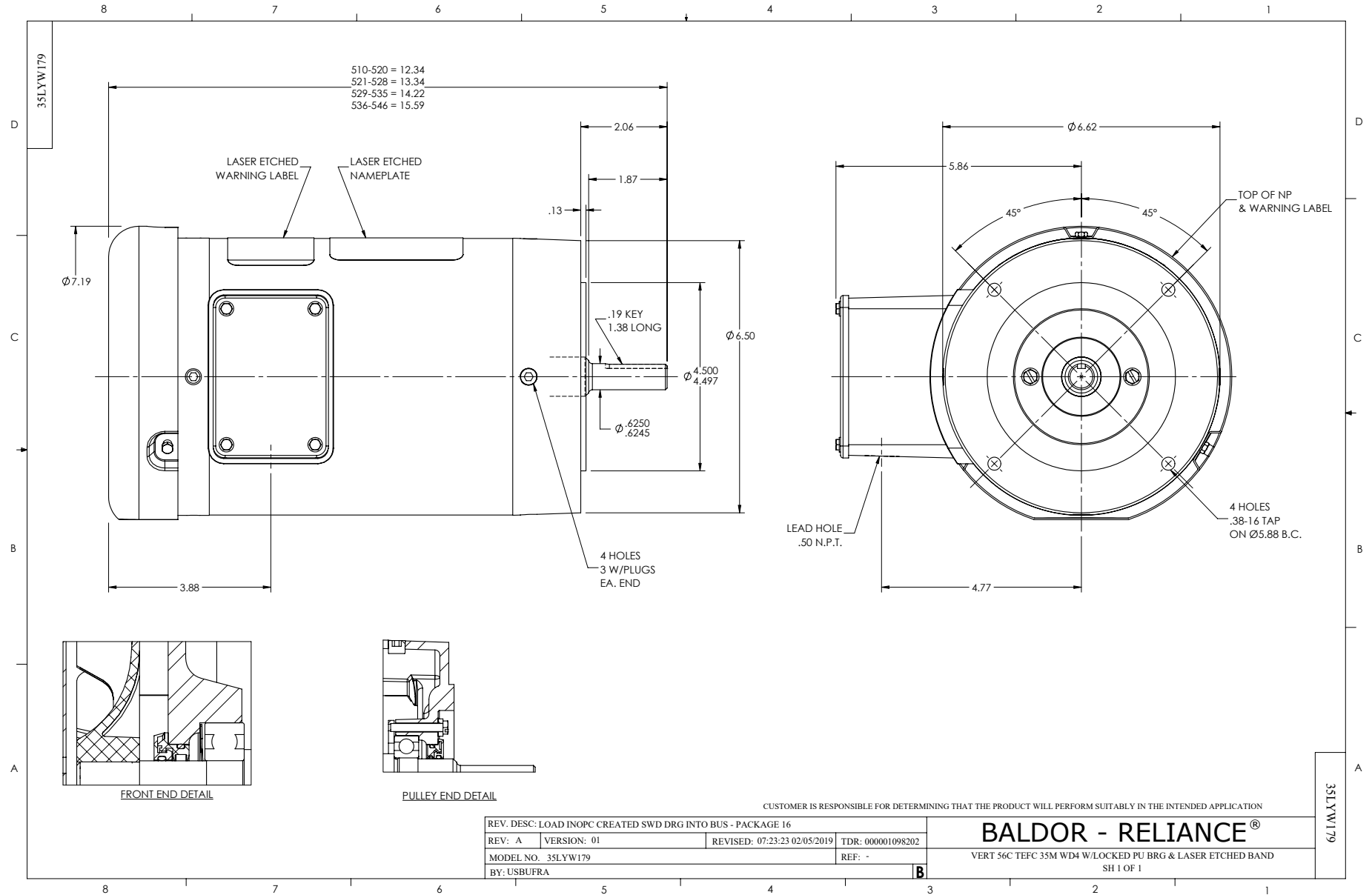
Typical performance - not guaranteed values.

1.5 HP 3 PH 60 HZ 1770 RPM 460 V 3524M

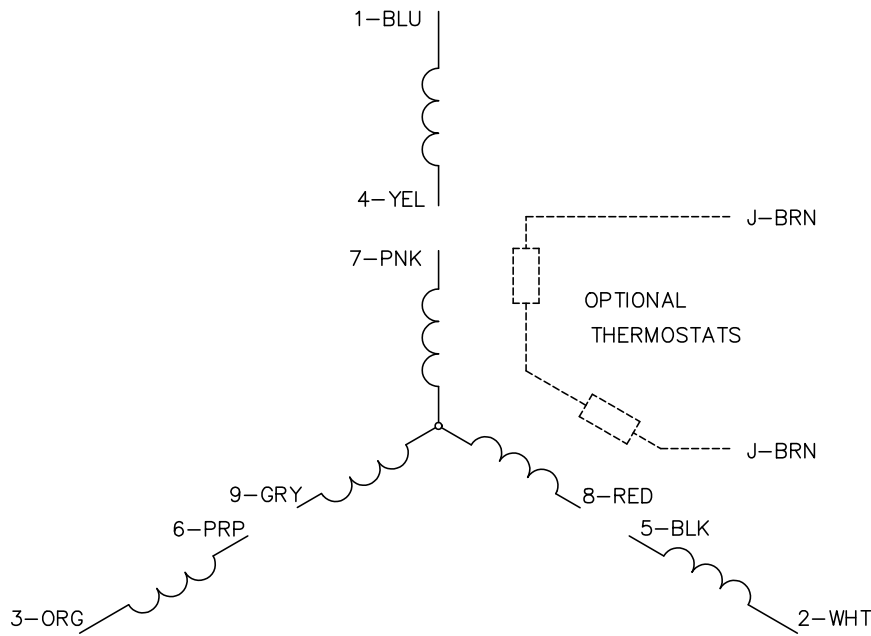
TORQUES (LB-FT): PO=18.8 PU=9.6 LR=12.6 LRA=19.7



11/24/2024 ACPERF, record # 95387



CD0005



LOW VOLTAGE
(2Y)



LINE

HIGH VOLTAGE
(1Y)



LINE

NOTES:

1. INTERCHANGE ANY TWO LINE LEADS TO REVERSE ROTATION.
2. OPTIONAL THERMOSTATS ARE PROVIDED WHEN SPECIFIED.
3. ACTUAL NUMBER OF INTERNAL PARALLEL CIRCUITS MAY BE A MULTIPLE OF THOSE SHOWN ABOVE.
4. LEAD COLORS ARE OPTIONAL. LEADS MUST ALWAYS BE NUMBERED AS SHOWN.

CD0005

| | | | |
|---|---------|-------------------------|--------------|
| REV. DESC: REVISE TO SHOW OPTIONAL COLORS | | | |
| REV. LTR: E | BY: JLP | REVISED: 01/19/99 10:15 | TDR: 0171435 |
| S00000 | | FILE: AAA00005140 | MDL: - |
| | | MTL: - | |

BALDOR ELECTRIC Co.

3PH, DV, 9 LEADS