



Customer information packet

VESSWDM3615T

5HP, 1750RPM, 3PH, 60HZ, 184TC, 3646M, TEFC, F1

Class - None

Division - Not Applicable

Specifications

Enclosure	TEFC
Frame	184TC
Frame Material	Stainless Steel
Frequency	60.00 Hz
Haz Area Class and Group	None
Haz Area Division	Not Applicable
Motor Letter Type	Three Phase
Output @ Frequency	5.000 HP @ 60 HZ
Phase	3
Synchronous Speed @ Frequency	1800 RPM @ 60 HZ
Voltage @ Frequency	230.0 V @ 60 HZ 460.0 V @ 60 HZ
Ambient Temperature	40 °C
Auxillary Box	No Auxillary Box
Auxillary Box Lead Termination	None
Base Indicator	No Mounting
Bearing Grease Type	Polyrex EM (-20F +300F)
Blower	None
Current @ Voltage	13.000 A @ 230.0 V 13.600 A @ 208.0 V 6.500 A @ 460.0 V
Design Code	B
Drip Cover	No Drip Cover
Duty Rating	CONT
Efficiency @ 100% Load	89.5 %
Electrically Isolated Bearing	Not Electrically Isolated
Feedback Device	NO FEEDBACK
Front Face Code	Standard
Front Shaft Indicator	None
Heater Indicator	No Heater
High Voltage Full Load Amps	6.5 a
Insulation Class	F

Part detail

Revision	J
Type	AC
Mech. spec.	36L747
Base	
Status	PRD/A
Elec. spec.	36WGS719
Layout	36LYL747
Eff. date	10-25-2022
CD Diagram	CD0005
Poles	04
Leads	9#16
Proprietary	False
Created date	02-27-2015

Inverter Code	Inverter Ready
KVA Code	J
Lifting Lugs	No Lifting Lugs
Locked Bearing Indicator	Locked Bearing
Motor Lead Exit	Ko Box
Motor Lead Quantity/Wire Size	9 @ 16 AWG
Motor Lead Termination	Flying Leads
Motor Standards	NEMA
Motor Type	3646M
Mounting Arrangement	F1
Number of Poles	4
Overall Length	18.32 IN
Power Factor	81
Product Family	Wash Down All Stainless Steel
Pulley End Bearing Type	Ball
Pulley Face Code	C-Face
Pulley Shaft Indicator	Standard
Rodent Screen	None
Service Factor	1.15
Shaft Diameter	1.125 IN
Shaft Extension Location	Pulley End
Shaft Ground Indicator	No Shaft Grounding
Shaft Rotation	Reversible
Shaft Slinger Indicator	No Slinger
Speed	1750 rpm
Speed Code	Single Speed
Starting Method	Direct on line
Thermal Device - Bearing	None
Thermal Device - Winding	None
Vibration Sensor Indicator	No Vibration Sensor
Winding Thermal 1	None
Winding Thermal 2	None

Nameplate

NP1953B01										
CAT.NO.	VESSWDM3615T									
SPEC.	36L747S719G3									
HP	5									
VOLTS	230/460									
AMP	13/6.5									
RPM	1750									
FRAME	184TC		HZ	60		PH	3			
SER.F.	1.15	CODE	J	DES	B	CLASS	F			
NEMA-NOM-EFF	89.5	PF	81							
RATING	40C AMB-CONT									
CC	010A	USABLE AT 208V					N/A			
DE	6206	ODE	6205							
ENCL	TEFC	SN								
	4:1CT 20:1VT									

Parts list

Part number	Description	Quantity
SA294519	SA 36L747S719G3	1.000 ea
RA280598	RA 36L747S719G3	1.000 ea
36FN3000A01SP	EXFN, PLASTIC, 7.00 OD, .912 ID	1.000 ea
36CB1003A01	CONDUIT BOX	1.000 ea
36GS1025	36 MOLDED GASKET W/LIP, LEAD SEAL, FOR	1.000 ea
10XN1032A08	10-32 X 1/2 HEX HD SCREW	2.000 ea
HA5027A02	HA4054 T-DRAIN X2 BAGGED WITH LABEL	1.000 ea
HW1000A10	#10 FLAT WASHER (SAE)	2.000 ea
11XW1032G06	10-32 X .38, TAPTITE II, HEX WSHR SLTD U	1.000 ea
HW3001B02	BRASS CUP WASHER W/GROUND SYMBOL TAB,	1.000 ea
36FE1907A01	FR EP ASSY W/EP FROM SOUTHERN TOOL STAIN	1.000 ea
HW4606A02	JM CLIPPER/SEAL (LWE-0938-1624-AL23)	1.000 ea
HW5100A05	WVY WSHR F/205 & 304 BRGS	1.000 ea
36PE1908A03	PU ENDPLATE ASSY	1.000 ea
10XN2520S28	1/4-20X 1 3/4 HEX HD SS X	4.000 ea
HA1049A02	DUBO LOK WASHER SIZE 1/4 (NYLON LOCK SEA	4.000 ea
HA1049A02	DUBO LOK WASHER SIZE 1/4 (NYLON LOCK SEA	4.000 ea
36FH4011	WASHDOWN FAN COVER #304 STAINLESS W/NOTC	1.000 ea
10XN1032S06	HEX HD CAP SCREW, SS	3.000 ea
36CB4517	LIPPED CB LID #304 STAINLESS - CLEANED	1.000 ea
37GS3010SP	1/16"WHITE LID GASKET	1.000 ea
59XN0832S07	8/32 X 7/16 HX WS HD SER X	4.000 ea
HW4606A03	JM CLIPPER/SEAL (LWE-1156-1875-AL44)	1.000 ea
HW2502E16	#303 SS,SQ KEY 1/4 X 1.750	1.000 ea
HA7000A02	KEY RETAINER RING, 1 1/8 DIA, 1 3/8 DIA	1.000 ea
MJ5001A02	732 CL SEALANT 3 OZ DIXIE BEARING 289100	0.001 ea
HW3200S01	EYEBOLT 3/8-16 X3/4 S.S. TDR #35988	1.000 ea
MJ1000A02	GREASE, POLYREX EM EXXON	0.050 lb
51XB1214A16	12-14X1.00 HXWSSLD SERTYB	1.000 ea
HA3101S29	THRUBOLT- 1/4-20X13.00 SS	4.000 ea
GOPA1000	PKG GRP, PRINT PK1026A06	1.000 ea

PK3082	STYROFOAM CRADLE	1.000 ea
MN416A01	TAG-INSTAL-MAINT no wire (2500bx)4/22	1.000 ea

AC Induction Motor Performance Data

Record # 36851

Typical performance - not guaranteed values

Winding: 36WGS719-R001		Type: 3646M		Enclosure: TEFC	
Nameplate Data			460 V, 60 Hz: High Voltage Connection		
Rated Output (HP)	5	Full Load Torque	15 LB-FT		
Volts	230/460	Start Configuration	direct on line		
Full Load Amps	13/6.5	Breakdown Torque	49.7 LB-FT		
R.P.M.	1750	Pull-up Torque	27.7 LB-FT		
Hz	60 Phase	3	Locked-rotor Torque	32.3 LB-FT	
NEMA Design Code	B KVA Code	J	Starting Current	48.3 A	
Service Factor (S.F.)		1.15	No-load Current	2.91 A	
NEMA Nom. Eff.	89.5	Power Factor	81	Line-line Res. @ 25°C	2.3457 Ω
Rating - Duty		40C AMB-CONT	Temp. Rise @ Rated Load	87°C	
S.F. Amps			Temp. Rise @ S.F. Load	109°C	

Load Characteristics 460 V, 60 Hz, 5 HP

% of Rated Load	25	50	75	100	125	150	S.F.
Power Factor	42	64	75	81	83	84	82
Efficiency	86.3	90.3	90.6	89.8	88.4	86.5	89
Speed	1788.5	1776.4	1763.2	1748.5	1732.5	1714.2	1739
Line amperes	3.26	4.07	5.17	6.44	7.96	9.65	7.35

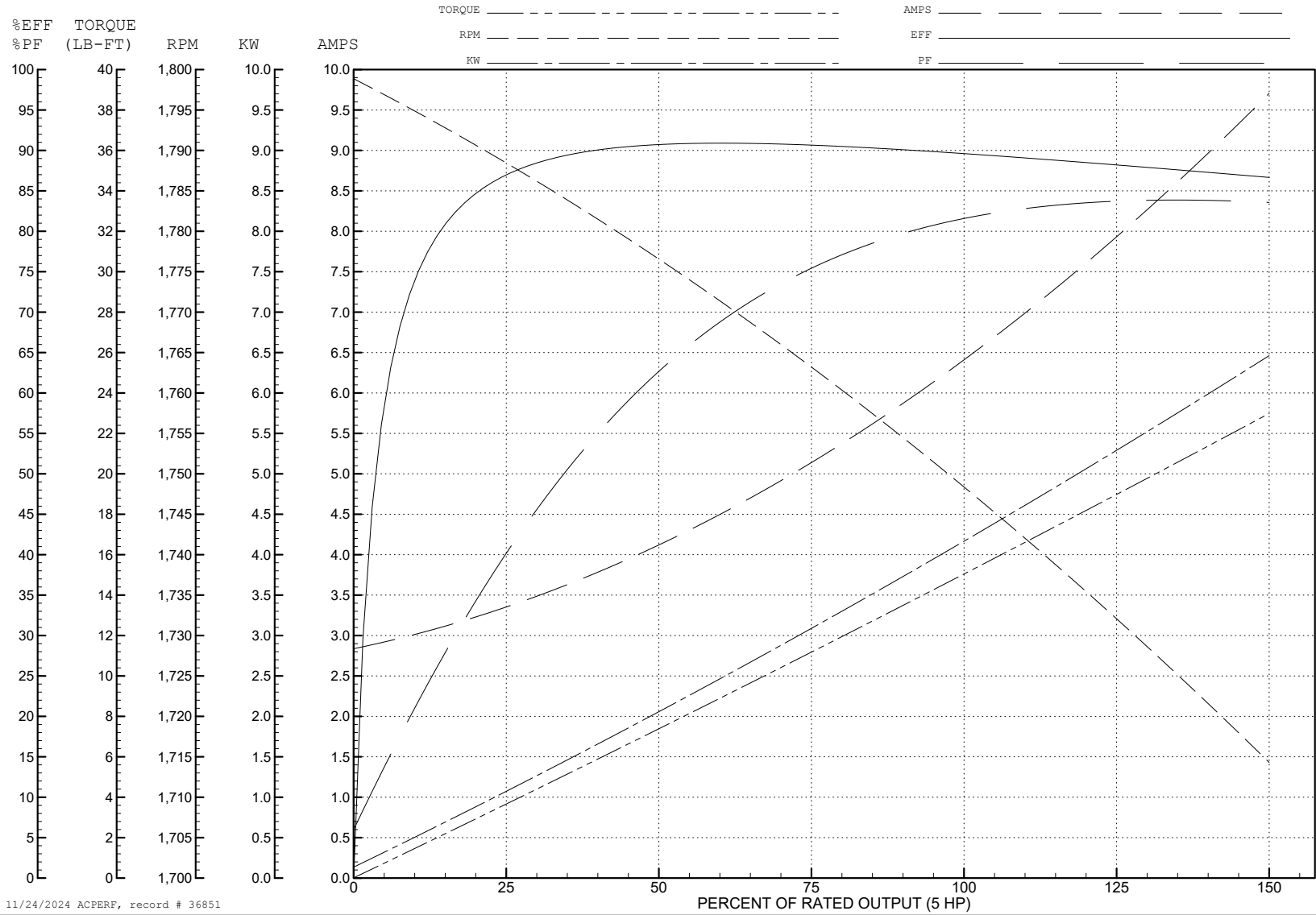
ABB Motors and Mechanical Inc.

WINDING # 36WGS719

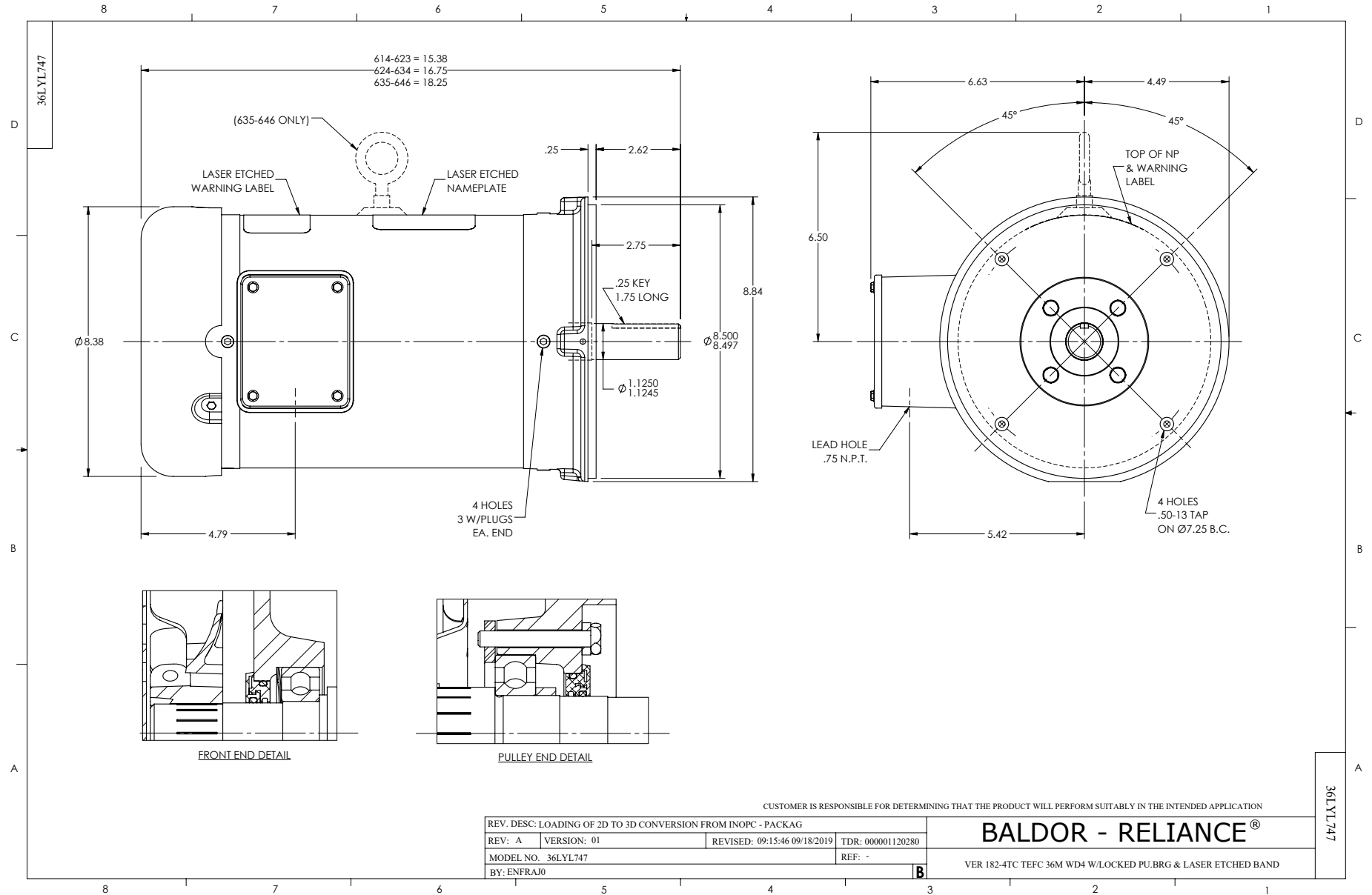
5 HP 3 PH 60 HZ 1750 RPM 460 V 3646M

Typical performance - not guaranteed values.

TORQUES (LB-FT): PO=49.7 PU=27.7 LR=32.3 LRA=48.3



11/24/2024 ACPERF, record # 36851



CD0005

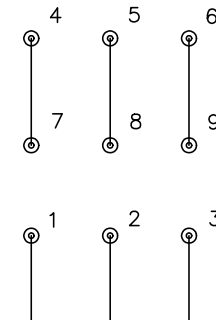


LOW VOLTAGE
(2Y)



LINE

HIGH VOLTAGE
(1Y)



LINE

NOTES:

1. INTERCHANGE ANY TWO LINE LEADS TO REVERSE ROTATION.
2. OPTIONAL THERMOSTATS ARE PROVIDED WHEN SPECIFIED.
3. ACTUAL NUMBER OF INTERNAL PARALLEL CIRCUITS MAY BE A MULTIPLE OF THOSE SHOWN ABOVE.
4. LEAD COLORS ARE OPTIONAL. LEADS MUST ALWAYS BE NUMBERED AS SHOWN.

CD0005

REV. DESC: REVISE TO SHOW OPTIONAL COLORS			
REV. LTR: E	BY: JLP	REVISED: 01/19/99 10:15	TDR: 0171435
S00000		FILE: AAA00005140	MDL: -
		MTL: -	

BALDOR ELECTRIC Co.

3PH, DV, 9 LEADS