



---

# Customer information packet

## VEWDM3558T

2HP, 1760RPM, 3PH, 60HZ, 143TC, 3528M, TEFC, F1

Class - None

Division - Not Applicable

## Specifications

|                                |   |
|--------------------------------|---|
| Enclosure                      | TEFC  |
| Frame                          | 143TC   |
| Frame Material                 | Steel   |
| Frequency                      | 60.00 Hz  |
| Haz Area Class and Group       | None  |
| Haz Area Division              | Not Applicable  |
| Motor Letter Type              | Three Phase   |
| Output @ Frequency             | 2.000 HP @ 60 HZ  |
| Phase                          | 3   |
| Synchronous Speed @ Frequency  | 1800 RPM @ 60 HZ  |
| Voltage @ Frequency            | 230.0 V @ 60 HZ<br>460.0 V @ 60 HZ                          |
| Agency Approvals               | CSA EEV<br>NEMA PREMIUM<br>NEMA_PREMIUM<br>UR               |
| Ambient Temperature            | 40 °C   |
| Auxillary Box                  | No Auxillary Box  |
| Auxillary Box Lead Termination | None  |
| Base Indicator                 | No Mounting   |
| Bearing Grease Type            | Polyrex EM (-20F +300F)                                     |
| Blower                         | None  |
| Current @ Voltage              | 6.000 A @ 208.0 V<br>5.600 A @ 230.0 V<br>2.800 A @ 460.0 V |
| Design Code                    | B   |
| Drip Cover                     | No Drip Cover   |
| Duty Rating                    | CONT  |
| Efficiency @ 100% Load         | 86.5 %  |
| Electrically Isolated Bearing  | Not Electrically Isolated                                   |
| Feedback Device                | NO FEEDBACK   |
| Front Shaft Indicator          | None  |

## Part detail

|              |            |
|--------------|------------|
| Revision     | E          |
| Type         | AC         |
| Mech. spec.  | 35SS605    |
| Base         |            |
| Status       | PRD/A      |
| Elec. spec.  | 35WGG073   |
| Layout       | 35LYSS605  |
| Eff. date    | 02-14-2024 |
| CD Diagram   | CD0005     |
| Poles        | 04         |
| Leads        | 9#18       |
| Proprietary  | False      |
| Created date | 10-01-2021 |

|                               |                     |
|-------------------------------|---------------------|
| Heater Indicator              | No Heater           |
| High Voltage Full Load Amps   | 2.8 a               |
| Insulation Class              | F                   |
| Inverter Code                 | Inverter Ready      |
| KVA Code                      | L                   |
| Lifting Lugs                  | No Lifting Lugs     |
| Locked Bearing Indicator      | Locked Bearing      |
| Motor Lead Quantity/Wire Size | 9 @ 18 AWG          |
| Motor Lead Termination        | Flying Leads        |
| Motor Standards               | NEMA                |
| Motor Type                    | 3528M               |
| Mounting Arrangement          | F1                  |
| Number of Poles               | 4                   |
| Overall Length                | 13.28 IN            |
| Power Factor                  | 74                  |
| Product Family                | Wash Down           |
| Pulley End Bearing Type       | Sealed Bearing      |
| Pulley Face Code              | C-Face              |
| Pulley Shaft Indicator        | Standard            |
| Rodent Screen                 | None                |
| Service Factor                | 1.15                |
| Shaft Diameter                | 0.875 IN            |
| Shaft Ground Indicator        | No Shaft Grounding  |
| Shaft Rotation                | Reversible          |
| Shaft Slinger Indicator       | Shaft Slinger       |
| Speed                         | 1760 rpm            |
| Speed Code                    | Single Speed        |
| Starting Method               | Direct on line      |
| Thermal Device - Bearing      | None                |
| Thermal Device - Winding      | None                |
| Vibration Sensor Indicator    | No Vibration Sensor |
| Winding Thermal 1             | None                |
| Winding Thermal 2             | None                |

**Nameplate**

| <b>NP1669L</b>      |               |             |            |            |   |              |   |  |  |
|---------------------|---------------|-------------|------------|------------|---|--------------|---|--|--|
| <b>CAT.NO.</b>      | VEWDM3558T    |             |            |            |   |              |   |  |  |
| <b>SPEC.</b>        | 35SS605G073G1 |             |            |            |   |              |   |  |  |
| <b>HP</b>           | 2             |             |            |            |   |              |   |  |  |
| <b>VOLTS</b>        | 230/460       |             |            |            |   |              |   |  |  |
| <b>AMP</b>          | 5.6/2.8       |             |            |            |   |              |   |  |  |
| <b>RPM</b>          | 1760          |             |            |            |   |              |   |  |  |
| <b>FRAME</b>        | 143TC         |             | <b>HZ</b>  | 60         |   | <b>PH</b>    | 3 |  |  |
| <b>SER.F.</b>       | 1.15          | <b>CODE</b> | K          | <b>DES</b> | B | <b>CLASS</b> | F |  |  |
| <b>NEMA-NOM-EFF</b> | 86.5          | <b>PF</b>   | 77         |            |   |              |   |  |  |
| <b>RATING</b>       | 40C AMB-CONT  |             |            |            |   |              |   |  |  |
| <b>CC</b>           | 010A          |             |            |            |   |              |   |  |  |
| <b>DE</b>           | 6205          |             | <b>ODE</b> | 6203       |   |              |   |  |  |
| <b>ENCL</b>         | TEFC          | <b>SN</b>   |            |            |   |              |   |  |  |
| <b>BLANK</b>        | SFA 6.26/3.13 |             |            |            |   |              |   |  |  |

## Parts list

| Part number   | Description                              | Quantity |
|---------------|--|----------|
| SA398790      | SA 35SS605G073G1                         | 1.000 ea |
| RA389811      | RA 35SS605G073G1                         | 1.000 ea |
| 34FN3002B01   | EXTERNAL FAN, PLASTIC, .637/.639 HUB W/  | 1.000 ea |
| NS2512A01     | INSULATOR, CONDUIT BOX X                 | 1.000 ea |
| 35CB3010A01G  | 35 CB .75 NPT @ 6:00 (GRAY)              | 1.000 ea |
| 35GS1040      | 35 MOLDED GASKET W/LIP, LEAD SEAL,       | 1.000 ea |
| 51XB1016A08   | 10-16X 1/2HXWSSLD SERTYB                 | 2.000 ea |
| 11XW1032G06   | 10-32 X .38, TAPTITE II, HEX WSHR SLTD U | 1.000 ea |
| 35EP3122B00W  | MASTER ODE,203 BRG,.683SH,.125NPT DRNS,F | 1.000 ea |
| HW4072A01     | BLACK DRAIN PLUG FOR .125 NPT            | 3.000 ea |
| HW5100A03     | WAVY WASHER (W1543-017)                  | 1.000 ea |
| 35EP3307E00W  | MASTER DE,205 BRG,1.623SH,.125NPT DRNS,C | 1.000 ea |
| HW4072A01     | BLACK DRAIN PLUG FOR .125 NPT            | 3.000 ea |
| HW4600B49     | SEAL 0.938 X 1.624 X 0.250 SINGLE LIP DB | 1.000 ea |
| 12XN1032S20   | 10-32 X 1-1/4 HEX M.S. , STAINLESS STEEL | 2.000 ea |
| 51XB1214A16   | 12-14X1.00 HXWSSLD SERTYB                | 1.000 ea |
| 35FH4005A32SP | IEC FH NO GRSR W/3 HOLES - PRIMED        | 1.000 ea |
| 11XW1032S06   | 10-32 X .38, TAPTITE II, HEX WSHR SLTD U | 3.000 ea |
| 35CB4522      | 35 LIPPED CB LID PRIMED                  | 1.000 ea |
| 35GS1030A02   | 35 GS FOR CB LID - WHITE NEOPRENE        | 1.000 ea |
| 59XW0832S07   | TAPTITE II,HEX WSHR UNSLTD SER,410 S.S., | 4.000 ea |
| HW4600B39SP   | V-RING SLINGER 0.550 X 0.790 X .18 VITON | 1.000 ea |
| HW4600B46     | V-RING SLINGER 0.875 X 1.420 X .24 VITON | 1.000 ea |
| HW2502D13     | SS KEY, 3/16 SQ X 1.375                  | 1.000 ea |
| HA7000A01     | KEY RETAINER 7/8" DIA SHAFT              | 1.000 ea |
| MJ5001A27     | 32220KN GRAY SEALER *MIN BUY 4 QTS=1GAL  | 0.001 qt |
| 85XU0407S04   | 4X1/4 U DRIVE PIN STAINLESS              | 2.000 ea |
| LB1164        | LABEL,WARNING AND DRAIN                  | 1.000 ea |
| HA5027A02     | HA4054 T-DRAIN X2 BAGGED WITH LABEL      | 1.000 ea |
| MJ1000A02     | GREASE, POLYREX EM EXXON                 | 0.050 lb |
| MG1025Z02     | ACTIVATOR WILKOFASST 060.02HF            | 0.010 ga |

|            |   |          |
|------------|---|----------|
| MG1025W01  | WILKOFAS, 781.01, SIGNAL WHITE #9003    | 0.017 ga |
| HA3100S07  | THRUBOLT 10-32 X 8.375 SS               | 4.000 ea |
| LC0005     | CONN.DIA.,TY M,9-LD,DUAL VOLT,REVERSING | 1.000 ea |
| NP1669L    | SS WD SUPER-E UL PREM REV MTG           | 1.000 ea |
| 35PA1066   | PKG GRP, PRINT PK1008A06                | 1.000 ea |
| PK3082     | STYROFOAM CRADLE                        | 1.000 ea |
| MN416A01   | TAG-INSTAL-MAINT no wire (2500bx)4/22   | 1.000 ea |
| FE-0000001 | ZRTG FE ASSEMBLY                        | 1.000 ea |
| PE-0000002 | ZRTG PE ASSEMBLY                        | 1.000 ea |

**AC Induction Motor Performance Data**

Record # 87157

Typical performance - not guaranteed values

| <b>Winding: 35WGG073-R001</b> |                          | <b>Type: 3528M</b> |  | <b>Enclosure: TEFC</b>   |  |
|-------------------------------|--------------------------|--------------------|--|--------------------------|--|
| <b>Nameplate Data</b>         |                          |                    | <b>460 V, 60 Hz:<br/>High Voltage Connection</b> |                          |  |
| <b>Rated Output (HP)</b>      | 2                        |                    | <b>Full Load Torque</b>                          | 5.99 LB-FT               |  |
| <b>Volts</b>                  | 230/460                  |                    | <b>Start Configuration</b>                       | direct on line           |  |
| <b>Full Load Amps</b>         | 5.6/2.8                  |                    | <b>Breakdown Torque</b>                          | 20.5 LB-FT               |  |
| <b>R.P.M.</b>                 | 1760                     |                    | <b>Pull-up Torque</b>                            | 13.8 LB-FT               |  |
| <b>Hz</b>                     | <b>60 Phase</b>          | 3                  | <b>Locked-rotor Torque</b>                       | 15 LB-FT                 |  |
| <b>NEMA Design Code</b>       | <b>B KVA Code</b>        | K                  | <b>Starting Current</b>                          | 22.5 A                   |  |
| <b>Service Factor (S.F.)</b>  | 1.15                     |                    | <b>No-load Current</b>                           | 1.62 A                   |  |
| <b>NEMA Nom. Eff.</b>         | <b>86.5 Power Factor</b> | 77                 | <b>Line-line Res. @ 25°C</b>                     | 9.54 Ω                   |  |
| <b>Rating - Duty</b>          | 40C AMB-CONT             |                    | <b>Temp. Rise @ Rated Load</b>                   | 64°C                     |  |
| <b>S.F. Amps</b>              | 6.3/3.15                 |                    | <b>Temp. Rise @ S.F. Load</b>                    | 77°C                     |  |
|                               |                          |                    | <b>Locked-rotor Power Factor</b>                 | 57.9                     |  |
|                               |                          |                    | <b>Rotor inertia</b>                             | 0.202 lb-ft <sup>2</sup> |  |

**Load Characteristics 460 V, 60 Hz, 2 HP**

| <b>% of Rated Load</b> | <b>25</b> | <b>50</b> | <b>75</b> | <b>100</b> | <b>125</b> | <b>150</b> | <b>S.F.</b> |
|------------------------|-----------|-----------|-----------|------------|------------|------------|-------------|
| <b>Power Factor</b>    | 35        | 55        | 68        | 76         | 81         | 84         | 80          |
| <b>Efficiency</b>      | 78.3      | 85.3      | 86.9      | 86.5       | 85.3       | 83.6       | 86.1        |
| <b>Speed</b>           | 1791      | 1782      | 1771      | 1760       | 1748       | 1734       | 1754        |
| <b>Line amperes</b>    | 1.71      | 1.97      | 2.34      | 2.82       | 3.36       | 3.97       | 3.13        |

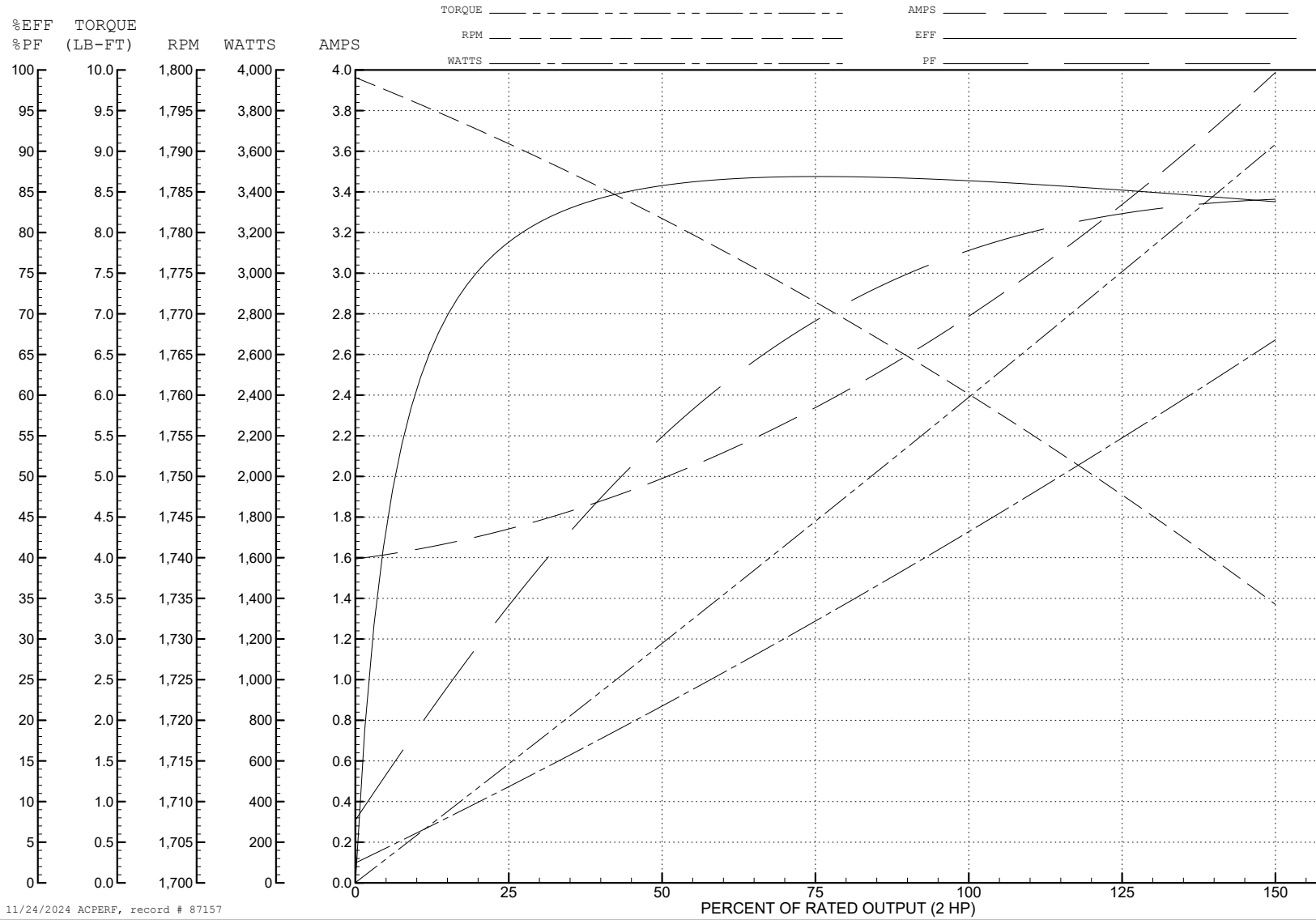
ABB Motors and Mechanical Inc.

WINDING # 35WGG073

Typical performance - not guaranteed values.

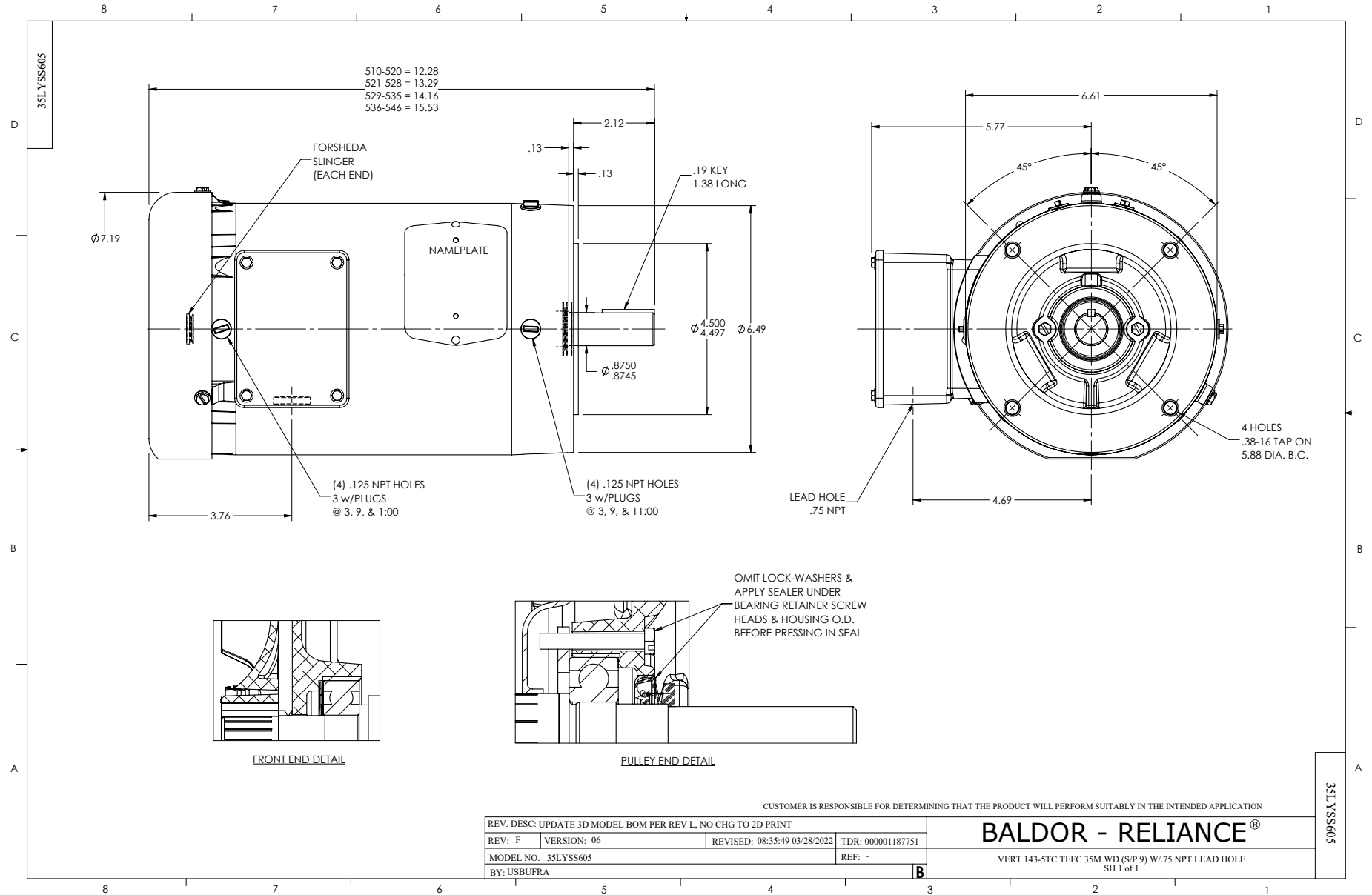
2 HP 3 PH 60 HZ 1760 RPM 460 V 3528M

TORQUES (LB-FT): PO=20.5 PU=13.8 LR=15 LRA=22.5



11/24/2024 ACPERF, record # 87157





CD0005

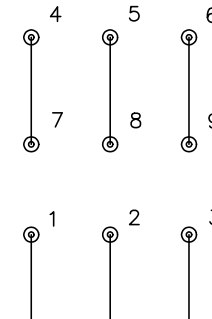


LOW VOLTAGE  
(2Y)



LINE

HIGH VOLTAGE  
(1Y)



LINE

NOTES:

1. INTERCHANGE ANY TWO LINE LEADS TO REVERSE ROTATION.
2. OPTIONAL THERMOSTATS ARE PROVIDED WHEN SPECIFIED.
3. ACTUAL NUMBER OF INTERNAL PARALLEL CIRCUITS MAY BE A MULTIPLE OF THOSE SHOWN ABOVE.
4. LEAD COLORS ARE OPTIONAL. LEADS MUST ALWAYS BE NUMBERED AS SHOWN.

CD0005

|   |         |                         |              |
|---|---------|-------------------------|--------------|
| REV. DESC: REVISE TO SHOW OPTIONAL COLORS |         |                         |              |
| REV. LTR: E                               | BY: JLP | REVISED: 01/19/99 10:15 | TDR: 0171435 |
| S00000                                    |         | FILE: AAA00005140       | MDL: -       |
|   |         | MTL: -                  |              |

BALDOR ELECTRIC Co.

3PH, DV, 9 LEADS