

**BALDOR • RELIANCE**

---

# Customer information packet

## VFDL3612TM

5HP, 1725RPM, 1PH, 60HZ, 184TC, 3646LC, TEFC, F

Class - None

Division - Not Applicable

## Specifications

Enclosure	TEFC
Frame	184TC
Frame Material	Steel
Frequency	60.00 Hz
Haz Area Class and Group	None
Haz Area Division	Not Applicable
Motor Letter Type	Cap Start, Cap Run
Output @ Frequency	5.000 HP @ 60 HZ
Phase	1
Synchronous Speed @ Frequency	1800 RPM @ 60 HZ
Voltage @ Frequency	230.0 V @ 60 HZ
Agency Approvals	UR CSA
Ambient Temperature	40 °C
Auxillary Box	No Auxillary Box
Auxillary Box Lead Termination	None
Base Indicator	No Mounting
Bearing Grease Type	Polyrex EM (-20F +300F)
Blower	None
Current @ Voltage	23.000 A @ 230.0 V
Design Code	L
Drip Cover	No Drip Cover
Duty Rating	CONT
Efficiency @ 100% Load	80.0 %
Electrically Isolated Bearing	Not Electrically Isolated
Feedback Device	NO FEEDBACK
Front Face Code	Standard
Front Shaft Indicator	None
Heater Indicator	No Heater
High Voltage Full Load Amps	23.0 a
Insulation Class	F
Inverter Code	Not Inverter

## Part detail

Revision	F
Type	AC
Mech. spec.	36Q456
Base	
Status	PRD/A
Elec. spec.	36WGW279
Layout	36LYQ456
Eff. date	07-25-2024
CD Diagram	CD0152
Poles	04
Leads	2#10 A PH,3#16 B&J
Proprietary	False
Created date	03-10-2015

<b>KVA Code</b>	J
<b>Lifting Lugs</b>	Standard Lifting Lugs
<b>Locked Bearing Indicator</b>	Locked Bearing
<b>Motor Lead Exit</b>	Ko Box
<b>Motor Lead Quantity/Wire Size</b>	2 @ 10 AWG, A PH
<b>Motor Lead Termination</b>	Flying Leads
<b>Motor Standards</b>	NEMA
<b>Motor Type</b>	3646LC
<b>Mounting Arrangement</b>	F2
<b>Number of Poles</b>	4
<b>Overall Length</b>	18.04 IN
<b>Power Factor</b>	88
<b>Product Family</b>	General Purpose
<b>Pulley End Bearing Type</b>	Sealed Bearing
<b>Pulley Face Code</b>	C-Face
<b>Pulley Shaft Indicator</b>	Standard
<b>Rodent Screen</b>	None
<b>Service Factor</b>	1.00
<b>Shaft Diameter</b>	1.125 IN
<b>Shaft Extension Location</b>	Pulley End
<b>Shaft Ground Indicator</b>	No Shaft Grounding
<b>Shaft Rotation</b>	Reversible
<b>Shaft Slinger Indicator</b>	Shaft Slinger
<b>Speed</b>	1725 rpm
<b>Speed Code</b>	Single Speed
<b>Starting Method</b>	Direct on line
<b>Thermal Device - Bearing</b>	None
<b>Thermal Device - Winding</b>	None
<b>Vibration Sensor Indicator</b>	No Vibration Sensor
<b>Winding Thermal 1</b>	Manual Thermal Overload
<b>Winding Thermal 1 Location</b>	KO
<b>Winding Thermal 2</b>	None

**Nameplate**

<b>NP1280L</b>									
<b>CAT.NO.</b>	VFDFL3612TM								
<b>SPEC.</b>	36Q456W279G1								
<b>HP</b>	5								
<b>VOLTS</b>	230								
<b>AMP</b>	23								
<b>RPM</b>	1725								
<b>FRAME</b>	184TC	<b>HZ</b>	60	<b>PH</b>	1				
<b>SER.F.</b>	1.00	<b>CODE</b>	J	<b>DES</b>	L	<b>CL</b>	F		
<b>NEMA-NOM-EFF</b>	80	<b>PF</b>	88						
<b>RATING</b>	40C AMB-CONT								
<b>CC</b>									
<b>DE</b>	6206	<b>ODE</b>	6205						
<b>ENCL</b>	TEFC	<b>SN</b>							

## Parts list

Part number	Description	Quantity
SA295628	SA 36Q456W279G1	1.000 ea
RA281688	RA 36Q456W279G1	1.000 ea
OC3030F11SP	CAPACITOR 30 MFD 370 VAC	1.000 ea
TPLED1027SP	THERMAL 1PH 1.5 MAN REF LED989 TDR #5817	1.000 ea
EC1216C06SP	ELEC CAP, 216-259 MFD, 250V, 2.06D X 4.	2.000 ea
HW3200A01	3/8-16X3/4 EYEBOLT WELDED F/S	1.000 ea
HA2001A09	SPACER, .218 ID X .937 LG	2.000 ea
RM1015	BOOT FOR 1.50 MANUAL THERMALS	1.000 ea
51XN1032A28	10-32 X 1 3/4 HX WS SL SR	2.000 ea
XY1032A02	10-32 HEX NUT DIRECTIONAL SERRATION	2.000 ea
11XW1032G06	10-32 X .38, TAPTITE II, HEX WSHR SLTD U	1.000 ea
36EP3104A02	FREP MACH W/O GRSSR, RAISED FH PADS	1.000 ea
HW5100A05	WVY WSHR F/205 & 304 BRGS	1.000 ea
13XF0832A08	8-32 X.50 PAN HD,SLTD, TYPE F SCREW, ZIN	2.000 ea
37CB3805A11	37 CB W/1.06 DIA HOLE @12:, LE MTO	1.000 ea
37GS3002	GASKET, CAPACITOR BOX	2.000 ea
10XN2520A08	1/4-20X1/2 HEX HEAD CAP	4.000 ea
HA6003A16	CLAMP, CAPACITOR SIZE 8 1/4 X 1 1/2 PL	1.000 ea
51XW0832A07	8-32 X .44, TAPTITE II, HEX WSHR SLTD SE	2.000 ea
10XN2520A24	1/4-20X 1 1/2 HEX HD X	4.000 ea
HW1001A25	LOCKWASHER 1/4, ZINC PLT .493 OD, .255 I	4.000 ea
36EP3301A64	PULLEY 182-4TC ENCL 206 BRG W/SEAL W/O	1.000 ea
HW4600H12	SEAL 1.156 X 1.874 X 0.250 SINGLE LIP DB	1.000 ea
HW4600B36SP	V-RING SLINGER 1.188 X 1.690 X .24 VITON	1.000 ea
HA3101A28	THRUBOLT 1/4-20 X 12.500 OHIO ROD	4.000 ea
36FN3000A01SP	EXFN, PLASTIC, 7.00 OD, .912 ID	1.000 ea
51XB1214A16	12-14X1.00 HXWSSLD SERTYB	1.000 ea
36FH4009A114	IEC FH W/O GREASER W/PRIMER	1.000 ea
51XW1032A06	10-32 X .38, TAPTITE II, HEX WSHR SLTD S	3.000 ea
37CB4502	CAPAC BOX LID, STAMPED PLATED	1.000 ea
37GS3003SP	GASKET, CAPAC BOX LID X	1.000 ea

51XW0832A07	8-32 X .44, TAPTITE II, HEX WSHR SLTD SE	6.000 ea
HW2501E16	KEY, 1/4 SQ X 1.750	1.000 ea
HA7000A02	KEY RETAINER RING, 1 1/8 DIA, 1 3/8 DIA	1.000 ea
85XU0407S04	4X1/4 U DRIVE PIN STAINLESS	2.000 ea
LB1087	LABEL,MANUAL RESET (ROLL LABEL)	1.000 ea
MJ5001A27	32220KN GRAY SEALER *MIN BUY 4 QTS=1GAL	0.001 qt
HW3001B01	BRASS CUP WASHER, FOR #10 SCREW	1.000 ea
WD1000A15	3-520132-2 AMP FLAG (4M/RL NON-CANC/NON-	6.000 ea
LB1624	COMBINED WARNING LABEL, ISO/ANSI PICTOGR	1.000 ea
MJ1000A02	GREASE, POLYREX EM EXXON	0.050 lb
36FN3000A01SP	EXFN, PLASTIC, 7.00 OD, .912 ID	1.000 ea
MG1025C02	WILKOFASG, 787.105, TAN	0.022 ga
TP5059	GENERIC WELDED THERMAL, 7" LEAD KIT	1.000 ea
SP5172A10	TORQ MODEL 37 TYPE LC SPLIT CAPS,	1.000 ea
LC0002	CONNECTION LABEL	1.000 ea
MN416A01	TAG-INSTAL-MAINT no wire (2500bx)4/22	1.000 ea
NP1280L	ALUM FARM DUTY UL CC THERMAL	1.000 ea
PK3082	STYROFOAM CRADLE	1.000 ea
GOPA1000	PKG GRP, PRINT PK1026A06	1.000 ea
FE-0000001	ZRTG FE ASSEMBLY	1.000 ea

**AC Induction Motor Performance Data**

Record # 10712

Typical performance - not guaranteed values

<b>Winding: 36WGW279-R001</b>		<b>Type: 3646LC</b>		<b>Enclosure: TEFC</b>	
<b>Nameplate Data</b>			<b>230 V, 60 Hz: Single Voltage Motor</b>		
<b>Rated Output (HP)</b>	5	<b>Full Load Torque</b>	15 LB-FT		
<b>Volts</b>	230	<b>Start Configuration</b>	direct on line		
<b>Full Load Amps</b>	23	<b>Breakdown Torque</b>	43 LB-FT		
<b>R.P.M.</b>	1725	<b>Pull-up Torque</b>	36 LB-FT		
<b>Hz</b>	60	<b>Phase</b>	1	<b>Locked-rotor Torque</b>	46 LB-FT
<b>NEMA Design Code</b>	L	<b>KVA Code</b>	J	<b>Starting Current</b>	163 A
<b>Service Factor (S.F.)</b>			1	<b>No-load Current</b>	10 A
<b>NEMA Nom. Eff.</b>	80	<b>Power Factor</b>	88	<b>Line-line Res. @ 25°C</b>	0.353 Ω A Ph 2.23 Ω B Ph
<b>Rating - Duty</b>	40C AMB-CONT			<b>Temp. Rise @ Rated Load</b>	97°C

**Load Characteristics 230 V, 60 Hz, 5 HP**

<b>% of Rated Load</b>	<b>25</b>	<b>50</b>	<b>75</b>	<b>100</b>	<b>125</b>	<b>150</b>
<b>Power Factor</b>	54	71	85	89	89	91
<b>Efficiency</b>	65	76.1	81.5	80.8	79.3	75.5
<b>Speed</b>	1786	1769	1750	1732	1713	1687
<b>Line amperes</b>	12.7	14	18.5	22.6	27.3	33.5

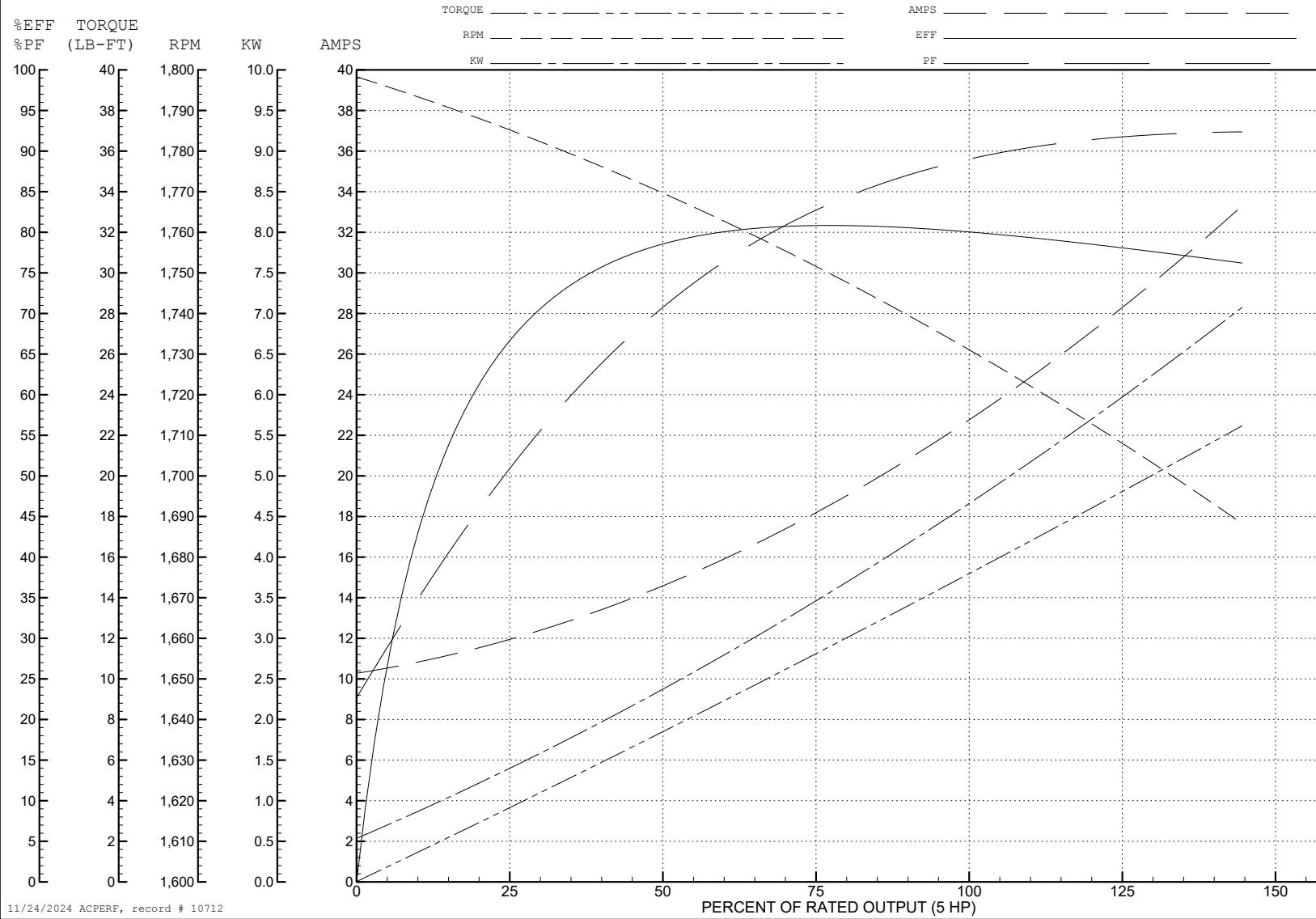
ABB Motors and Mechanical Inc.

WINDING # 36WGW279

Typical performance - not guaranteed values.

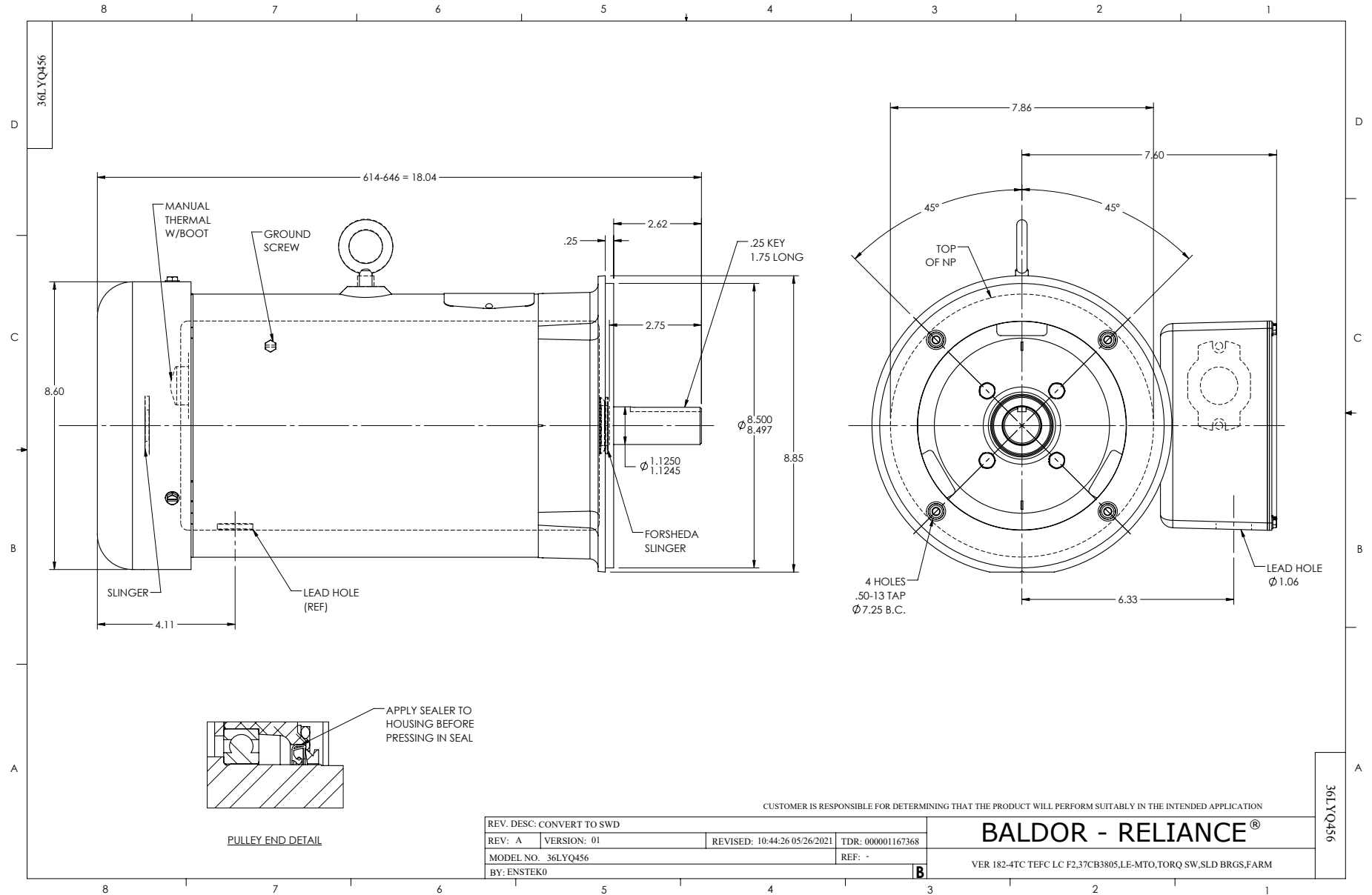
5 HP 1 PH 60 HZ 1725 RPM 230 V 3646LC

TORQUES (LB-FT): PO=43 PU=36 LR=46 LRA=163

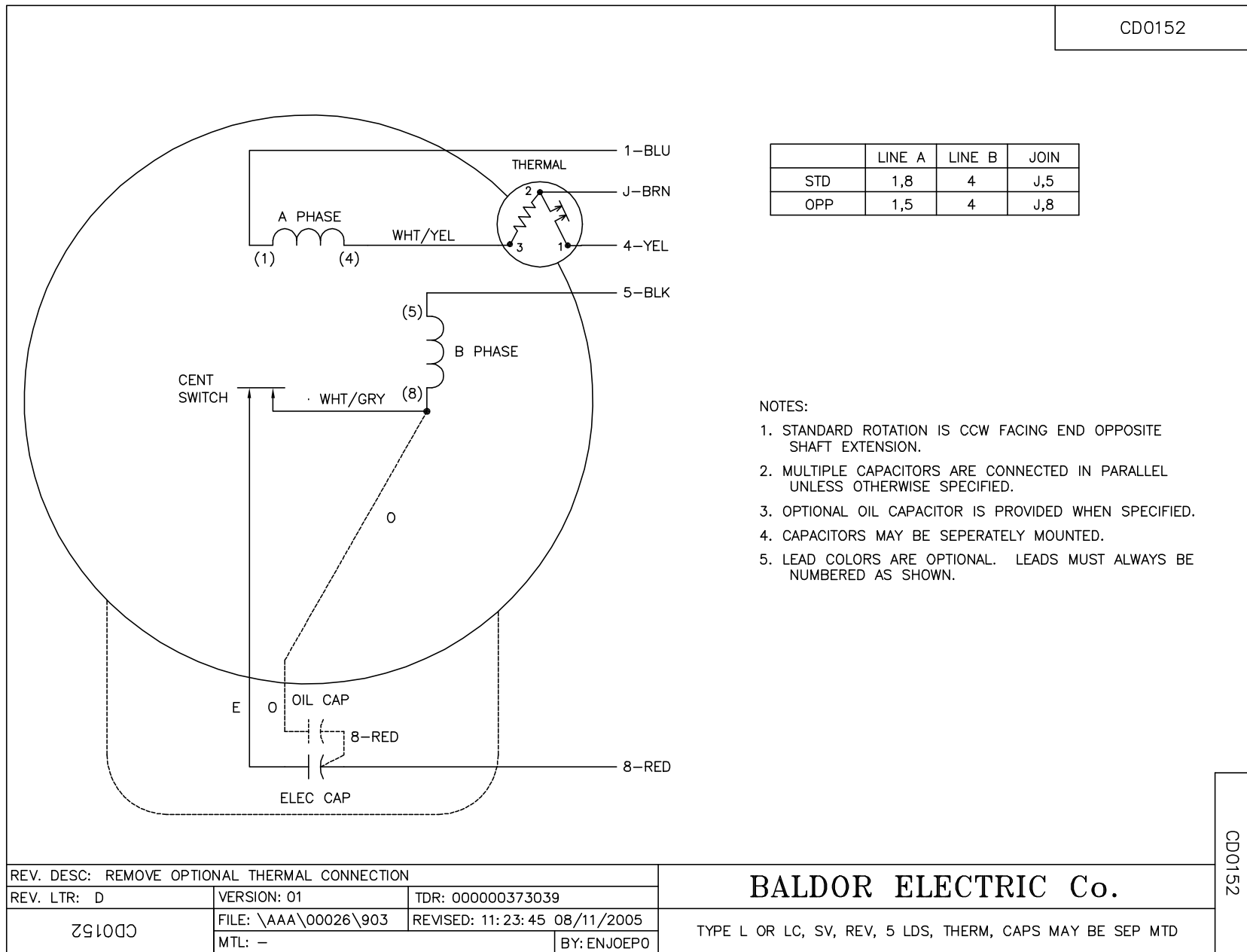


11/24/2024 ACPERF, record # 10712





CD0152



REV. DESC: REMOVE OPTIONAL THERMAL CONNECTION		
REV. LTR: D	VERSION: 01	TDR: 000000373039
CD0152	FILE: \AAA\00026\903	REVISED: 11: 23: 45 08/11/2005
	MTL: -	BY: ENJOEPO

**BALDOR ELECTRIC Co.**

TYPE L OR LC, SV, REV, 5 LDS, THERM, CAPS MAY BE SEP MTD

CD0152