

BALDOR • RELIANCE

Customer information packet

VFDL3507M

.75HP, 1725RPM, 1PH, 60HZ, 56C, 3432LC, TEFC, F

Class - None

Division - Not Applicable

Specifications

Enclosure	TEFC
Frame	56C
Frame Material	Steel
Frequency	60.00 Hz
Haz Area Class and Group	None
Haz Area Division	Not Applicable
Motor Letter Type	Cap Start, Cap Run
Output @ Frequency	.750 HP @ 60 HZ
Phase	1
Synchronous Speed @ Frequency	1800 RPM @ 60 HZ
Voltage @ Frequency	230.0 V @ 60 HZ 115.0 V @ 60 HZ
Agency Approvals	CSA UR
Ambient Temperature	40 °C
Auxillary Box	No Auxillary Box
Auxillary Box Lead Termination	None
Base Indicator	No Mounting
Bearing Grease Type	Polyrex EM (-20F +300F)
Blower	None
Current @ Voltage	8.800 A @ 115.0 V 4.400 A @ 230.0 V
Design Code	N
Drip Cover	No Drip Cover
Duty Rating	CONT
Efficiency @ 100% Load	74.0 %
Electrically Isolated Bearing	Not Electrically Isolated
Feedback Device	NO FEEDBACK
Front Face Code	Standard
Front Shaft Indicator	None
Heater Indicator	No Heater
High Voltage Full Load Amps	4.4 a

Part detail

Revision	K
Type	AC
Mech. spec.	34M370
Base	
Status	PRD/A
Elec. spec.	34WGW937
Layout	34LYM370
Eff. date	07-25-2024
CD Diagram	CD0320
Poles	04
Leads	6#18,1#14 #4TH
Proprietary	False
Created date	11-25-2013

Insulation Class	B
Inverter Code	Not Inverter
KVA Code	M
Lifting Lugs	No Lifting Lugs
Locked Bearing Indicator	Locked Bearing
Motor Lead Exit	Ko Box
Motor Lead Quantity/Wire Size	6 @ 18 AWG
Motor Lead Termination	Flying Leads
Motor Standards	NEMA
Motor Type	3432LC
Mounting Arrangement	F1
Number of Poles	4
Overall Length	13.35 IN
Power Factor	75
Product Family	General Purpose
Pulley End Bearing Type	Sealed Bearing
Pulley Face Code	C-Face
Pulley Shaft Indicator	Standard
Rodent Screen	None
RoHS Status	ROHS COMPLIANT
Service Factor	1.25
Shaft Diameter	0.625 IN
Shaft Extension Location	Pulley End
Shaft Ground Indicator	No Shaft Grounding
Shaft Rotation	Reversible
Shaft Slinger Indicator	Shaft Slinger
Speed	1725 rpm
Speed Code	Single Speed
Starting Method	Direct on line
Thermal Device - Bearing	None
Thermal Device - Winding	None
Vibration Sensor Indicator	No Vibration Sensor
Winding Thermal 1	Manual Thermal Overload
Winding Thermal 1 Location	KO

Winding Thermal 2

None

Nameplate

NP1280L									
CAT.NO.	VFDL3507M								
SPEC.	34M370W937G1								
HP	.75								
VOLTS	115/230								
AMP	8.8/4.4								
RPM	1725								
FRAME	56C	HZ	60	PH	1				
SER.F.	1.25	CODE	M	DES	N	CL	B		
NEMA-NOM-EFF	74	PF	75						
RATING	40C AMB-CONT								
CC									
DE	6203	ODE	6203						
ENCL	TEFC	SN							
	SFA 10.2/5.1								

Parts list

Part number	Description	Quantity
SA273098	SA 34M370W937G1	1.000 ea
RA259702	RA 34M370W937G1	1.000 ea
OC3025F11	CYL OIL CAP 25MFD/370V	1.000 ea
TPMRD4748SP	THERMAL 1PH 0.75 MAN SPL LOW TEMP	1.000 ea
EC1540A04	ELEC CAP, 540-648 MFD, 125V, 1.81D X 4.	1.000 ea
NS2512A01	INSULATOR, CONDUIT BOX X	1.000 ea
34CB3001A39P	CONDUIT BOX, MACH/PAINT	1.000 ea
34GS1013SP	GASKET, CONDUIT BOX LEXIDE	1.000 ea
51XB1016A07	10-16 X 7/16 HXWSSLD SERTYB	2.000 ea
11XW1032G06	10-32 X .38, TAPTITE II, HEX WSHR SLTD U	1.000 ea
RM1014A01SP	BUTYL RUB. THRM COV. (MENA)	1.000 ea
HA6001A01	THERMAL RETAINER (PLATED)	1.000 ea
NS2500A02	INSULATOR, MAN THER PROT	1.000 ea
51XB1214A10	12-14 X 5/8HX WS SL SR TYBX	2.000 ea
51XW0832A07	8-32 X .44, TAPTITE II, HEX WSHR SLTD SE	2.000 ea
34EP3102A01SP	FR ENDPLATE, MACH	1.000 ea
HA1005A05SP	SLINGER, OD 1.50, ID .659, 203 BRG	1.000 ea
34CB3801	CAPACITOR BOX, DIE CAST	1.000 ea
NS2501A02	INSULATOR, CAPACITOR BOX	1.000 ea
34GS3002	GASKET, CAPACITOR BOX	1.000 ea
34GS5003	FOAM SLEEVE, ID = 2 1/16" X 3 3/8"	2.000 ea
51XB1214A08	12-14 X 1/2HX WS SL SR TYBX	2.000 ea
HW5100A03	WAVY WASHER (W1543-017)	1.000 ea
34EP3300A55	PU ENDPLATE, MACH W/SEAL	1.000 ea
HW4600A54	SEAL 0.668 X 1.064 X 0.250 DOUBLE SHIELD	1.000 ea
HW4600B39SP	V-RING SLINGER 0.550 X 0.790 X .18 VITON	1.000 ea
51XN1032A20	10-32 X 1 1/4 HX WS SL SR	2.000 ea
34FN3002A01SP	EXTERNAL FAN, PLASTIC, .637/.639 HUB W/	1.000 ea
34FH4002A01SP	IEC FH NO GREASER PRIMED	1.000 ea
51XW1032A06	10-32 X .38, TAPTITE II, HEX WSHR SLTD S	3.000 ea
36CB4516	750LIPPED CB LID - GALVANNEAL	1.000 ea

37GS1001	GASKET, CONDUIT BOX LID, .06 THICK LEXID	1.000 ea
51XW0832A07	8-32 X .44, TAPTITE II, HEX WSHR SLTD SE	4.000 ea
HW2501D13	KEY, 3/16 SQ X 1.375	1.000 ea
HA7000A04	KEY RETAINER 0.625 DIA SHAFTS	1.000 ea
MJ5001A27	32220KN GRAY SEALER *MIN BUY 4 QTS=1GAL	0.001 qt
HW3001B02	BRASS CUP WASHER W/GROUND SYMBOL TAB,	1.000 ea
MG1025C02	WILKOFASG SG, 787.105, TAN	0.014 ga
85XU0407S04	4X1/4 U DRIVE PIN STAINLESS	2.000 ea
SP5051B17	MDL 34 TORQ STAT SW,TYPE LC, STD F1 & F2	1.000 ea
HA3100A38	THRUBOLT 10-32 X 9.375	4.000 ea
LB1624	COMBINED WARNING LABEL, ISO/ANSI PICTOGR	1.000 ea
MN416A01	TAG-INSTAL-MAINT no wire (2500bx)4/22	1.000 ea
LB1087	LABEL,MANUAL RESET (ROLL LABEL)	1.000 ea
LC0269	1PH,DV,REV,THERMAL,7 LD,L.AMP THRU HTR H	1.000 ea
NP1280L	ALUM FARM DUTY UL CC THERMAL	1.000 ea
PK3083	STYROFOAM PACKING CRADLE	1.000 ea
36PA1000	PKG GRP, PRINT PK1016A06	1.000 ea
PK3088	MICROFOAM, 8"X"8 PERF. SHEETS	1.000 ea

AC Induction Motor Performance Data

Record # 7151

Typical performance - not guaranteed values

Winding: 34WGW937-R001		Type: 3432LC		Enclosure: TEFC	
Nameplate Data			230 V, 60 Hz: High Voltage Connection		
Rated Output (HP)	.75		Full Load Torque	2.25 LB-FT	
Volts	115/230		Start Configuration	direct on line	
Full Load Amps	8.8/4.4		Breakdown Torque	7 LB-FT	
R.P.M.	1725		Pull-up Torque	6.5 LB-FT	
Hz	60 Phase	1	Locked-rotor Torque	10.2 LB-FT	
NEMA Design Code	N KVA Code	M	Starting Current	35 A	
Service Factor (S.F.)	1.25		No-load Current	3.2 A	
NEMA Nom. Eff.	74 Power Factor	75	Line-line Res. @ 25°C	2.35 Ω A Ph 1.76 Ω B Ph	
Rating - Duty	40C AMB-CONT		Temp. Rise @ Rated Load	59°C	
S.F. Amps	10.2/5.1		Temp. Rise @ S.F. Load	74°C	

Load Characteristics 230 V, 60 Hz, 0.75 HP

% of Rated Load	25	50	75	100	125	150	S.F.
Power Factor	38	53	66	74	80	84	0
Efficiency	50.7	66	72.9	74.9	75.1	74.1	0
Speed	1787	1775	1761	1750	1733	1715	0
Line amperes	3.3	3.5	3.9	4.4	5.1	5.9	5.1

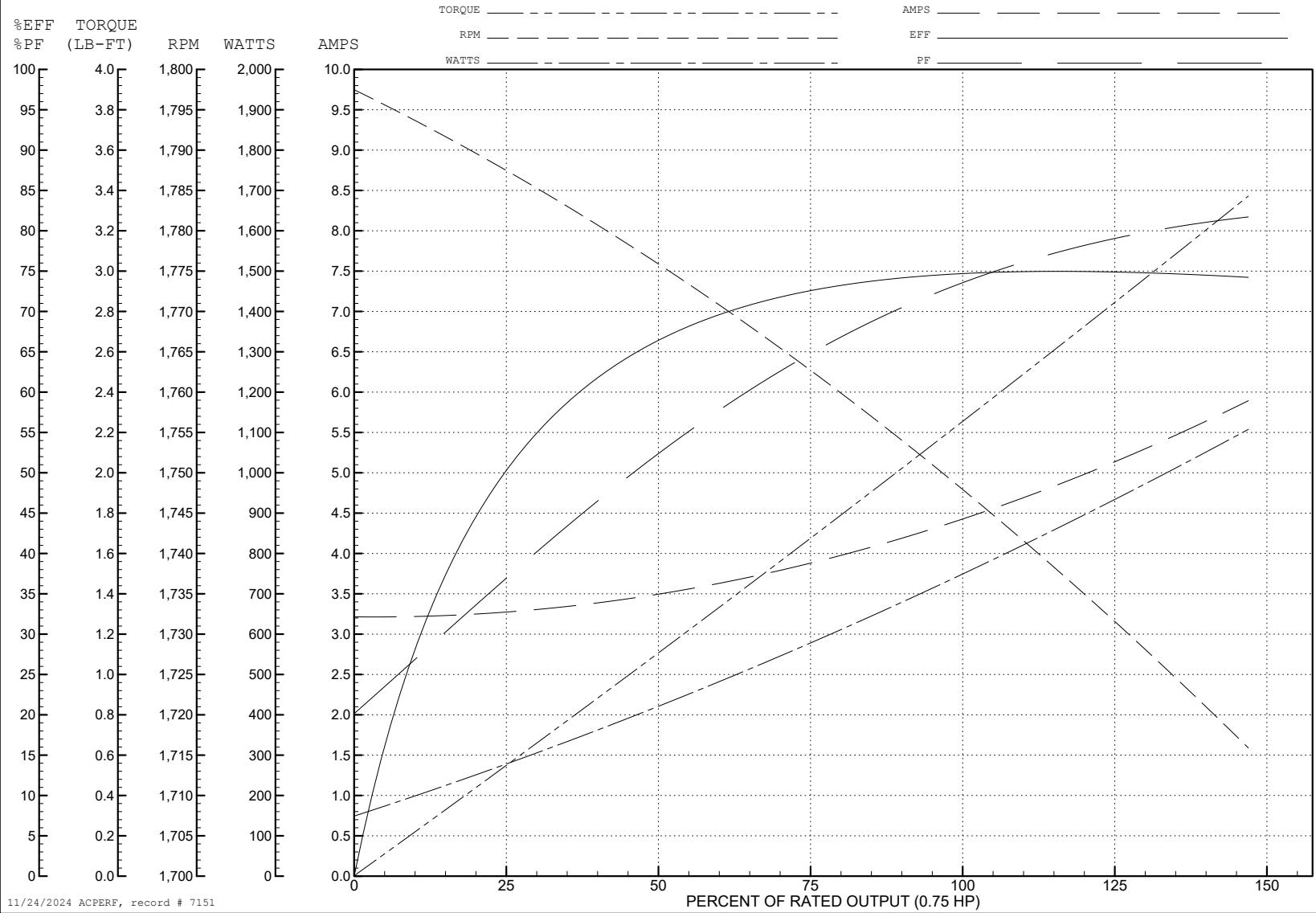
ABB Motors and Mechanical Inc.

WINDING # 34WGW937

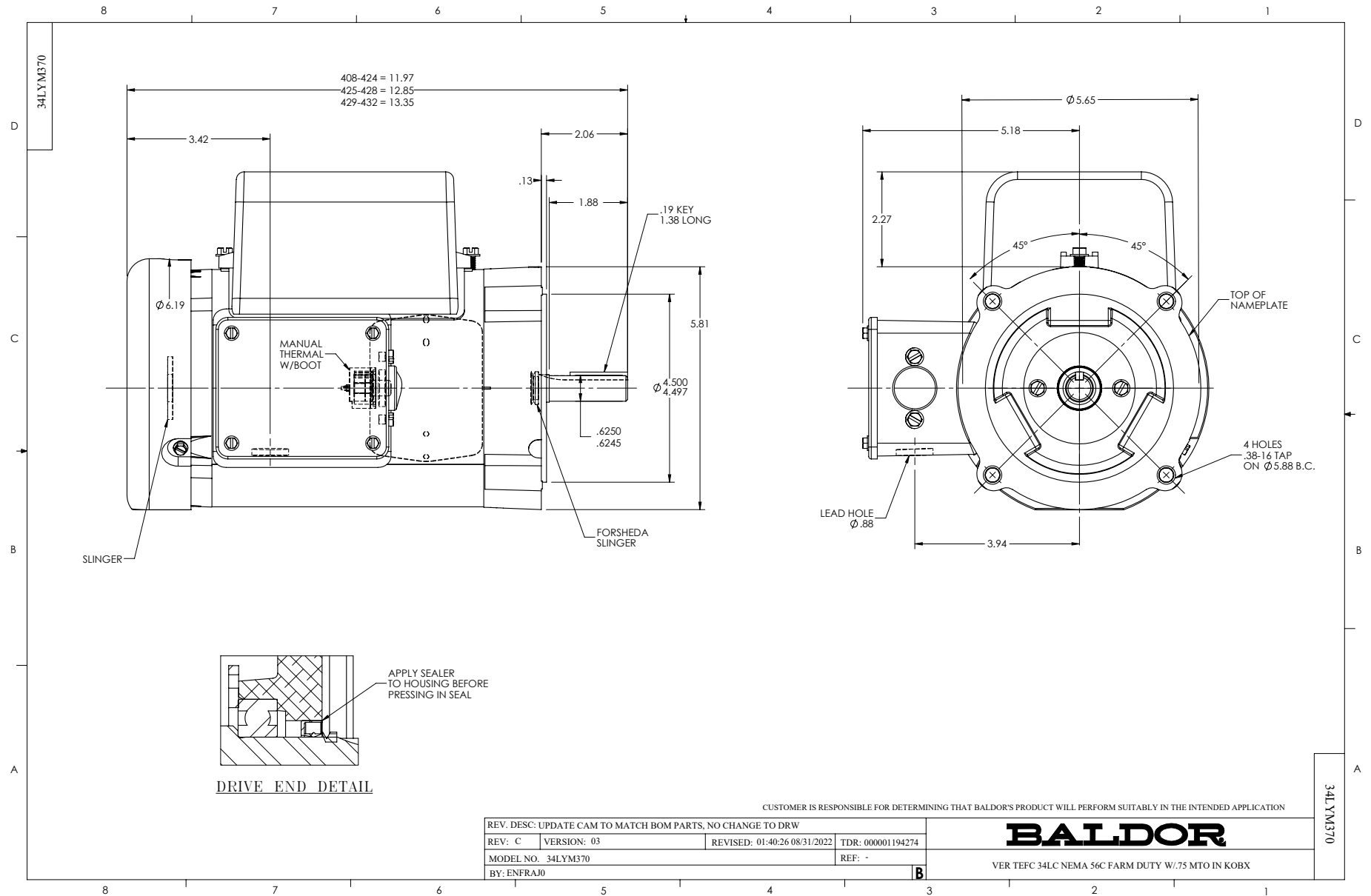
Typical performance - not guaranteed values.

0.75 HP 1 PH 60 HZ 1725 RPM 230 V 3432LC

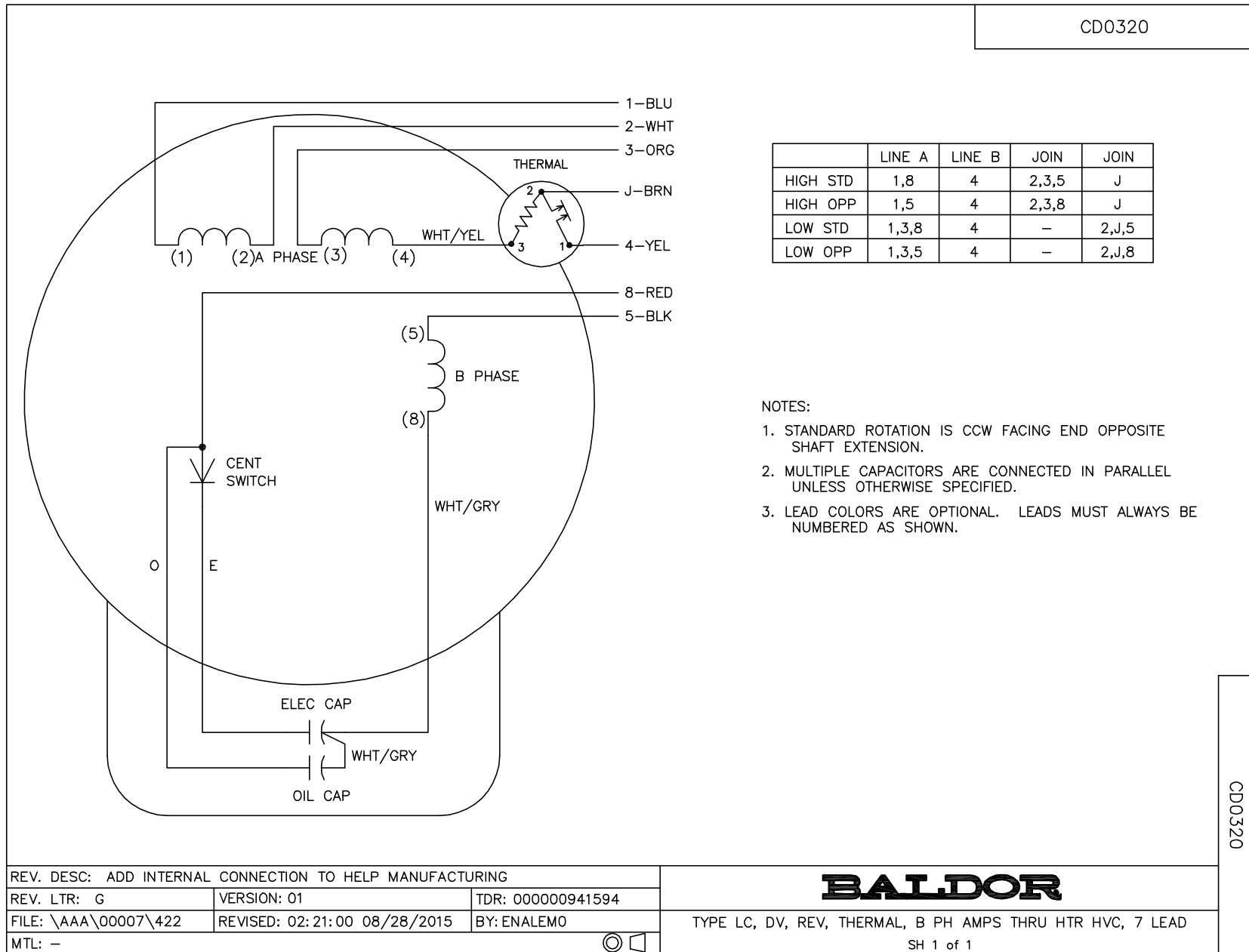
TORQUES (LB-FT) : PO=7 PU=6.5 LR=10.2 LRA=35



11/24/2024 ACPERF, record # 7151



CD0320



CD0320

REV. DESC: ADD INTERNAL CONNECTION TO HELP MANUFACTURING		
REV. LTR: G	VERSION: 01	TDR: 00000941594
FILE: \AAA\00007\422	REVISED: 02: 21: 00 08/28/2015	BY: ENALEMO
MTL: -	© □	

BALDOR

TYPE LC, DV, REV, THERMAL, B PH AMPS THRU HTR HVC, 7 LEAD
SH 1 of 1