

**BALDOR • RELIANCE**

---

# Customer information packet

## VFDL3610TM

3HP, 1750RPM, 1PH, 60HZ, 184TC, 3640LC, TEFC, F

Class - None

Division - Not Applicable

## Specifications

Enclosure	TEFC
Frame	184TC
Frame Material	Steel
Frequency	60.00 Hz
Haz Area Class and Group	None
Haz Area Division	Not Applicable
Motor Letter Type	Cap Start, Cap Run
Output @ Frequency	3.000 HP @ 60 HZ
Phase	1
Synchronous Speed @ Frequency	1800 RPM @ 60 HZ
Voltage @ Frequency	230.0 V @ 60 HZ
Agency Approvals	UR CSA
Ambient Temperature	40 °C
Auxillary Box	No Auxillary Box
Auxillary Box Lead Termination	None
Base Indicator	No Mounting
Bearing Grease Type	Polyrex EM (-20F +300F)
Blower	None
Current @ Voltage	15.500 A @ 230.0 V
Design Code	L
Drip Cover	No Drip Cover
Duty Rating	CONT
Efficiency @ 100% Load	80.0 %
Electrically Isolated Bearing	Not Electrically Isolated
Feedback Device	NO FEEDBACK
Front Face Code	Standard
Front Shaft Indicator	None
Heater Indicator	No Heater
High Voltage Full Load Amps	15.5 a
Insulation Class	F
Inverter Code	Not Inverter

## Part detail

Revision	S
Type	AC
Mech. spec.	36Q159
Base	
Status	PRD/A
Elec. spec.	36WGY739
Layout	36LYQ159
Eff. date	07-25-2024
CD Diagram	CD0002A02
Poles	04
Leads	2#14 A PH,3#16 B&J
Proprietary	False
Created date	12-03-2013

<b>KVA Code</b>	M
<b>Lifting Lugs</b>	No Lifting Lugs
<b>Locked Bearing Indicator</b>	Locked Bearing
<b>Motor Lead Exit</b>	Ko Box
<b>Motor Lead Quantity/Wire Size</b>	2 @ 14 AWG, A PH
<b>Motor Lead Termination</b>	Flying Leads
<b>Motor Standards</b>	NEMA
<b>Motor Type</b>	3640LC
<b>Mounting Arrangement</b>	F1
<b>Number of Poles</b>	4
<b>Overall Length</b>	18.05 IN
<b>Power Factor</b>	76
<b>Product Family</b>	General Purpose
<b>Pulley End Bearing Type</b>	Sealed Bearing
<b>Pulley Face Code</b>	C-Face
<b>Pulley Shaft Indicator</b>	Standard
<b>Rodent Screen</b>	None
<b>Service Factor</b>	1.00
<b>Shaft Diameter</b>	1.125 IN
<b>Shaft Extension Location</b>	Pulley End
<b>Shaft Ground Indicator</b>	No Shaft Grounding
<b>Shaft Rotation</b>	Reversible
<b>Shaft Slinger Indicator</b>	Shaft Slinger
<b>Speed</b>	1750 rpm
<b>Speed Code</b>	Single Speed
<b>Starting Method</b>	Direct on line
<b>Thermal Device - Bearing</b>	None
<b>Thermal Device - Winding</b>	None
<b>Vibration Sensor Indicator</b>	No Vibration Sensor
<b>Winding Thermal 1</b>	Manual Thermal Overload
<b>Winding Thermal 1 Location</b>	KO
<b>Winding Thermal 2</b>	None

**Nameplate**

<b>NP1280L</b>							
<b>CAT.NO.</b>	VFDL3610TM						
<b>SPEC.</b>	36Q159Y739G1						
<b>HP</b>	3						
<b>VOLTS</b>	230						
<b>AMP</b>	15.5						
<b>RPM</b>	1750						
<b>FRAME</b>	184TC	<b>HZ</b>	60	<b>PH</b>	1		
<b>SER.F.</b>	1.00	<b>CODE</b>	M	<b>DES</b>	L	<b>CL</b>	F
<b>NEMA-NOM-EFF</b>	80	<b>PF</b>	76				
<b>RATING</b>	40C AMB-CONT						
<b>CC</b>							
<b>DE</b>	6206	<b>ODE</b>	6205				
<b>ENCL</b>	TEFC	<b>SN</b>					

## Parts list

Part number	Description	Quantity
SA273492	SA 36Q159Y739G1	1.000 ea
RA260088	RA 36Q159Y739G1	1.000 ea
TPBRD3929SP	THERMAL 1PH 1.25 MAN REF BRD2945 TDR #58	1.000 ea
36CB1000A22	CONDUIT BOX, MACH	1.000 ea
37GS1000SP	GASKET, CONDUIT BOX STD., .06 THICK LEXI	1.000 ea
51XB1016A10	10-16X 5/8HXWSSLD SERTYB	2.000 ea
HA6015A08	THERMAL RETAINER (PLATED)	1.000 ea
RM1014A01SP	BUTYL RUB. THRM COV. (MENA)	1.000 ea
51XB1214A10	12-14 X 5/8HX WS SL SR TYBX	2.000 ea
11XW1032G06	10-32 X .38, TAPTITE II, HEX WSHR SLTD U	1.000 ea
HW3001B01	BRASS CUP WASHER, FOR #10 SCREW	1.000 ea
36FE3104A02	FREP MACH W/O GRSR, RAISED FH PADS	1.000 ea
13XF0832A08	8-32 X.50 PAN HD,SLTD, TYPE F SCREW, ZIN	2.000 ea
36GS3000	GASKET, CAPACITOR COVER LEXIDE	1.000 ea
10XN2520A12	1/4-20 X 3/4 HEX HEAD CAP	2.000 ea
HW5100A05	WVY WSHR F/205 & 304 BRGS	1.000 ea
36EP1300A44	PULLEY 182-4TC ENCL 206 BRG W/O GRSR W/	1.000 ea
HW4600H12	SEAL 1.156 X 1.874 X 0.250 SINGLE LIP DB	1.000 ea
10XN2520A24	1/4-20X 1 1/2 HEX HD X	4.000 ea
HW1001A25	LOCKWASHER 1/4, ZINC PLT .493 OD, .255 I	4.000 ea
XY2520A12	1/4-20 HEX NUT, DIRECTIONAL SERRATIONS	4.000 ea
36FH4009A101	IEC FH NO GREASER, W/PRIMER	1.000 ea
51XW1032A06	10-32 X .38, TAPTITE II, HEX WSHR SLTD S	3.000 ea
36CB4516	750LIPPED CB LID - GALVANNEAL	1.000 ea
37GS1001	GASKET, CONDUIT BOX LID, .06 THICK LEXID	1.000 ea
51XW0832A07	8-32 X .44, TAPTITE II, HEX WSHR SLTD SE	4.000 ea
HA1005A03SP	SLINGER, OD 1.750, ID .938, 205 BRG	1.000 ea
HW2501E16	KEY, 1/4 SQ X 1.750	1.000 ea
HW4600B36SP	V-RING SLINGER 1.188 X 1.690 X .24 VITON	1.000 ea
HA7000A02	KEY RETAINER RING, 1 1/8 DIA, 1 3/8 DIA	1.000 ea
85XU0407S04	4X1/4 U DRIVE PIN STAINLESS	2.000 ea

LB1087	LABEL,MANUAL RESET (ROLL LABEL)	1.000 ea
MJ5001A27	32220KN GRAY SEALER *MIN BUY 4 QTS=1GAL	0.001 qt
36CB5005A10	CAPACITOR BOX KIT, 36CB3800Z, EC1216C06,	1.000 ea
MJ1000A02	GREASE, POLYREX EM EXXON	0.050 lb
36FN3000A01SP	EXFN, PLASTIC, 7.00 OD, .912 ID	1.000 ea
51XB1214A16	12-14X1.00 HXWSSLD SERTYB	1.000 ea
MG1025C02	WILKOFASG, 787.105, TAN	0.022 ga
LB1624	COMBINED WARNING LABEL, ISO/ANSI PICTOGR	1.000 ea
HA3101A28	THRUBOLT 1/4-20 X 12.500 OHIO ROD	4.000 ea
TP5059	GENERIC WELDED THERMAL, 7" LEAD KIT	1.000 ea
SP5172A05	37 TYPE LC TORQ STAT SW LEAD ASSEMBLY	1.000 ea
LC0002	CONNECTION LABEL	1.000 ea
MN416A01	TAG-INSTAL-MAINT no wire (2500bx)4/22	1.000 ea
NP1280L	ALUM FARM DUTY UL CC THERMAL	1.000 ea
GOPA1000	PKG GRP, PRINT PK1026A06	1.000 ea
PK3082	STYROFOAM CRADLE	1.000 ea

**AC Induction Motor Performance Data**

Record # 11466

Typical performance - not guaranteed values

Winding: 36WGY739-R001		Type: 3640LC	Enclosure: TEFC	
<b>Nameplate Data</b>			<b>230 V, 60 Hz: Single Voltage Motor</b>	
Rated Output (HP)	3	Full Load Torque	9 LB-FT	
Volts	230	Start Configuration	direct on line	
Full Load Amps	15.5	Breakdown Torque	32 LB-FT	
R.P.M.	1750	Pull-up Torque	31 LB-FT	
Hz	60 Phase	Locked-rotor Torque	37 LB-FT	
NEMA Design Code	L KVA Code	Starting Current	144 A	
Service Factor (S.F.)	1	No-load Current	10.7 A	
NEMA Nom. Eff.	80 Power Factor	Line-line Res. @ 25°C	0.472 Ω A Ph 1.53 Ω B Ph	
Rating - Duty	40C AMB-CONT	Temp. Rise @ Rated Load	85°C	

**Load Characteristics 230 V, 60 Hz, 3 HP**

% of Rated Load	25	50	75	100	125	150
Power Factor	39	56	68	76	82	85
Efficiency	53.4	70.8	77.9	81	82	81.9
Speed	1791	1782	1775	1768	1759	1749
Line amperes	10.9	11.8	13.5	15.5	18	20.7

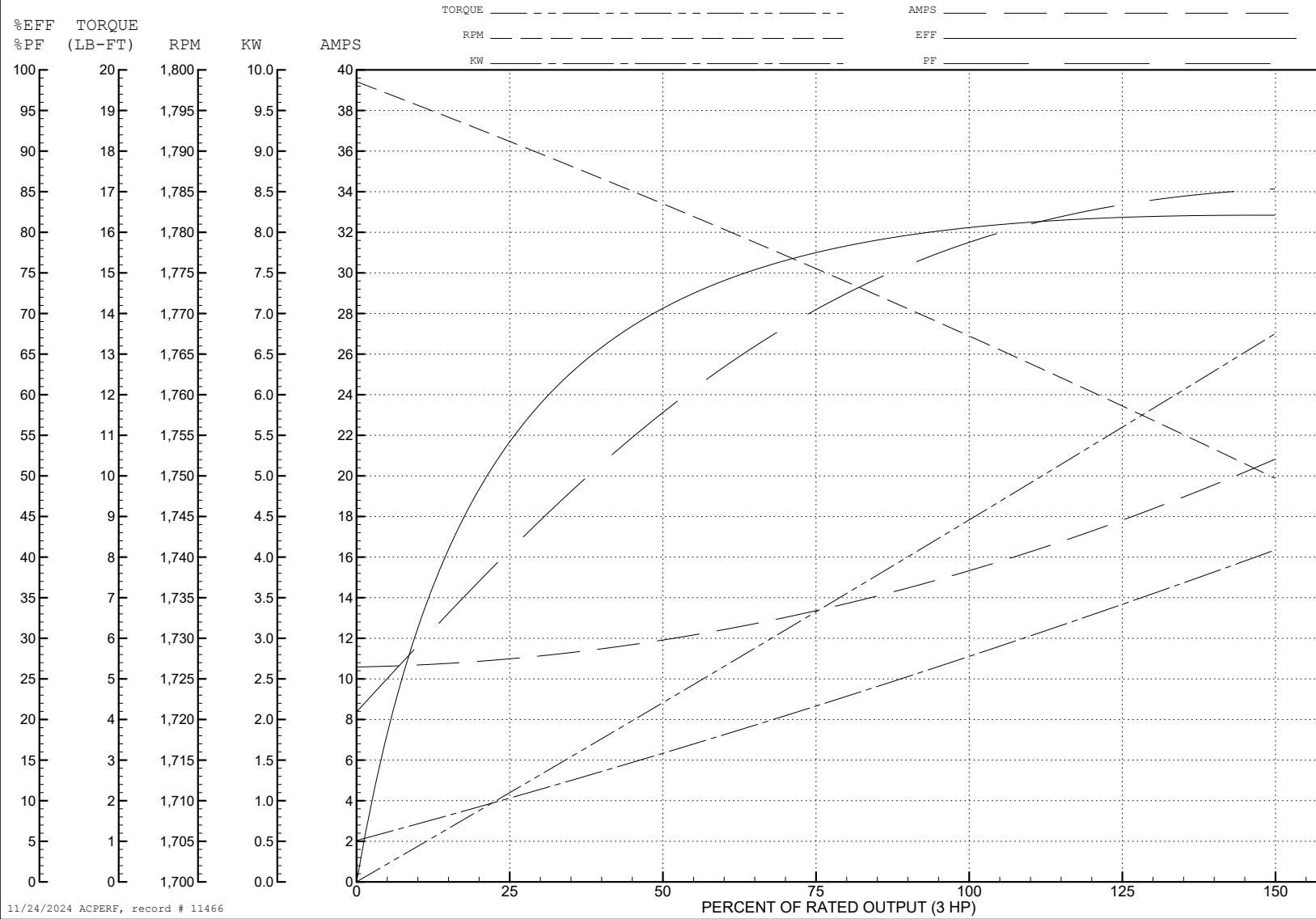
ABB Motors and Mechanical Inc.

WINDING # 36WGY739

Typical performance - not guaranteed values.

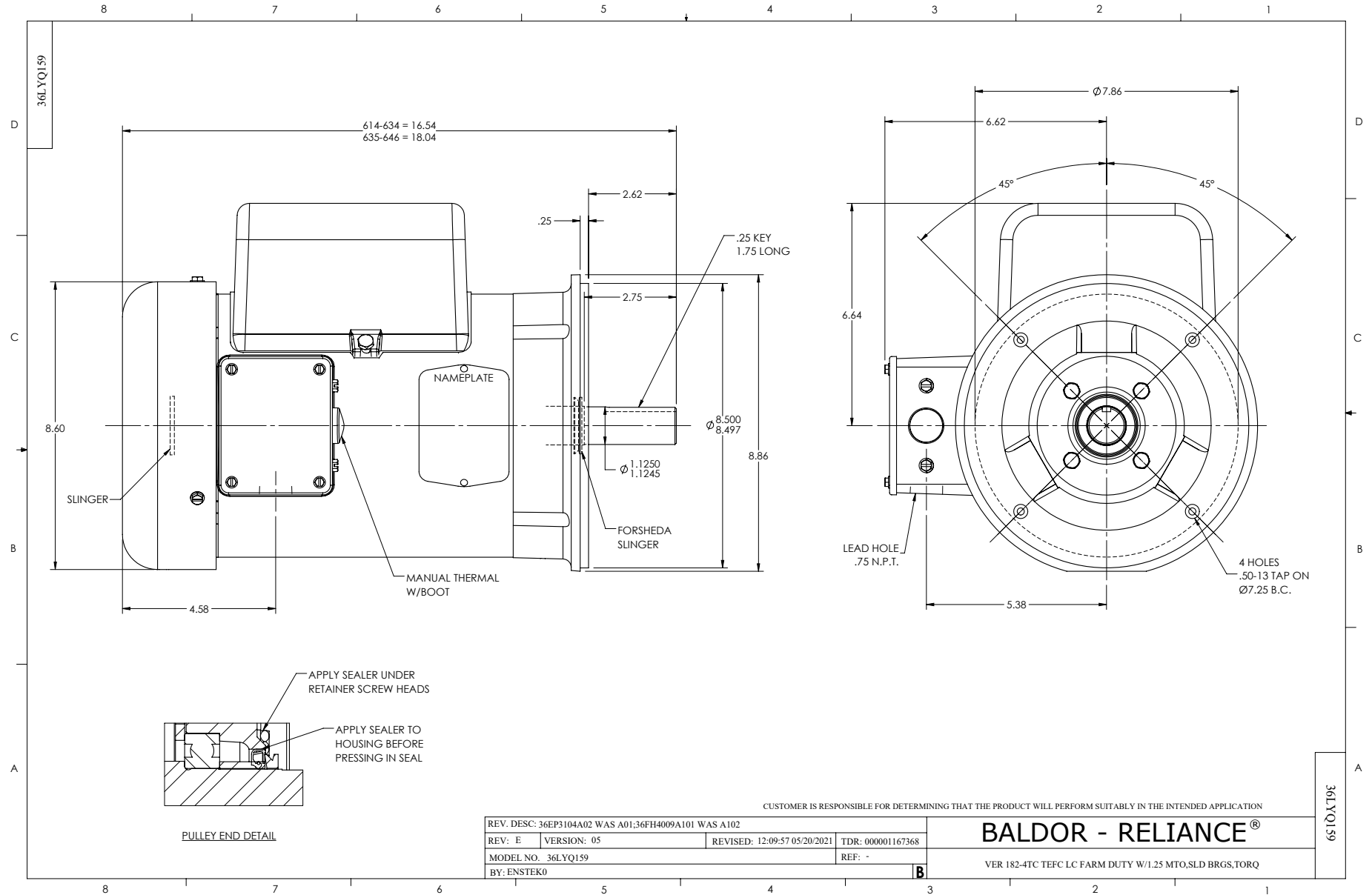
3 HP 1 PH 60 HZ 1750 RPM 230 V 3640LC

TORQUES (LB-FT): PO=32 PU=31 LR=37 LRA=144

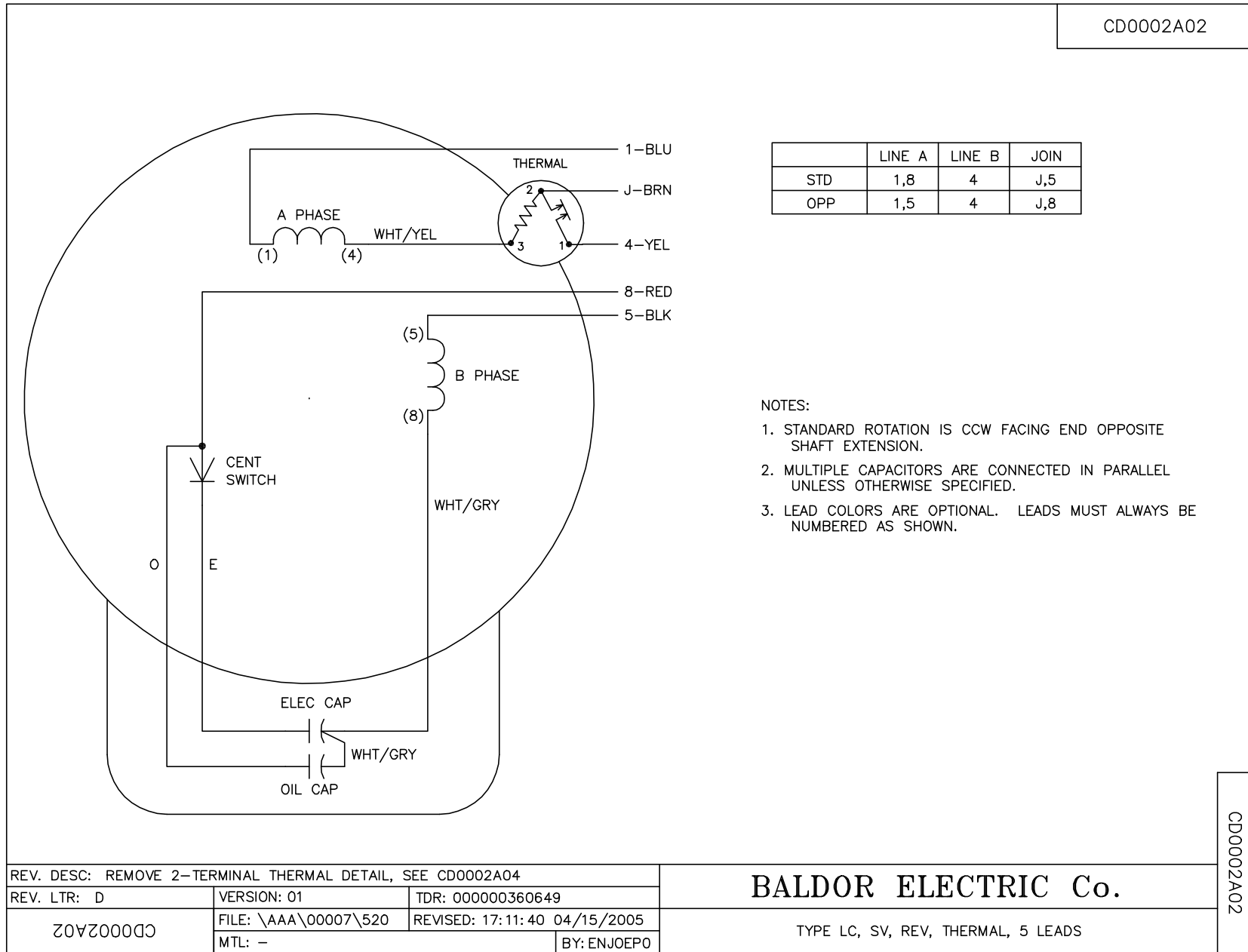


11/24/2024 ACPERF, record # 11466





CD0002A02



REV. DESC: REMOVE 2-TERMINAL THERMAL DETAIL, SEE CD0002A04		
REV. LTR: D	VERSION: 01	TDR: 000000360649
CD0002A02	FILE: \AAA\00007\520	REVISED: 17:11:40 04/15/2005
	MTL: -	BY: ENJOEPO

**BALDOR ELECTRIC Co.**

TYPE LC, SV, REV, THERMAL, 5 LEADS

CD0002A02