

BALDOR • RELIANCE

Customer information packet

VFDL3612TM

5HP, 1725RPM, 1PH, 60HZ, 184TC, 3646LC, TEFC, F

Class - None

Division - Not Applicable

Specifications

Enclosure	TEFC
Frame	184TC
Frame Material	Steel
Frequency	60.00 Hz
Haz Area Class and Group	None
Haz Area Division	Not Applicable
Motor Letter Type	Cap Start, Cap Run
Output @ Frequency	5.000 HP @ 60 HZ
Phase	1
Synchronous Speed @ Frequency	1800 RPM @ 60 HZ
Voltage @ Frequency	230.0 V @ 60 HZ
Agency Approvals	UR CSA
Ambient Temperature	40 °C
Auxillary Box	No Auxillary Box
Auxillary Box Lead Termination	None
Base Indicator	No Mounting
Bearing Grease Type	Polyrex EM (-20F +300F)
Blower	None
Current @ Voltage	23.000 A @ 230.0 V
Design Code	L
Drip Cover	No Drip Cover
Duty Rating	CONT
Efficiency @ 100% Load	80.0 %
Electrically Isolated Bearing	Not Electrically Isolated
Feedback Device	NO FEEDBACK
Front Face Code	Standard
Front Shaft Indicator	None
Heater Indicator	No Heater
High Voltage Full Load Amps	23.0 a
Insulation Class	F
Inverter Code	Not Inverter

Part detail

Revision	K
Type	AC
Mech. spec.	36Q158
Base	
Status	PRD/A
Elec. spec.	36WGW279
Layout	36LYQ158
Eff. date	07-25-2024
CD Diagram	CD0152
Poles	04
Leads	2#10 A PH,3#16 B&J
Proprietary	False
Created date	12-03-2013

KVA Code	J
Lifting Lugs	Standard Lifting Lugs
Locked Bearing Indicator	Locked Bearing
Motor Lead Exit	Ko Box
Motor Lead Quantity/Wire Size	2 @ 10 AWG, A PH
Motor Lead Termination	Flying Leads
Motor Standards	NEMA
Motor Type	3646LC
Mounting Arrangement	F1
Number of Poles	4
Overall Length	18.33 IN
Power Factor	88
Product Family	General Purpose
Pulley End Bearing Type	Sealed Bearing
Pulley Face Code	C-Face
Pulley Shaft Indicator	Standard
Rodent Screen	None
Service Factor	1.00
Shaft Diameter	1.125 IN
Shaft Extension Location	Pulley End
Shaft Ground Indicator	No Shaft Grounding
Shaft Rotation	Reversible
Shaft Slinger Indicator	Shaft Slinger
Speed	1725 rpm
Speed Code	Single Speed
Starting Method	Direct on line
Thermal Device - Bearing	None
Thermal Device - Winding	None
Vibration Sensor Indicator	No Vibration Sensor
Winding Thermal 1	Manual Thermal Overload
Winding Thermal 1 Location	KO
Winding Thermal 2	None

Nameplate

NP1280L									
CAT.NO.	VFDL3612TM								
SPEC.	36Q158W279G1								
HP	5								
VOLTS	230								
AMP	23								
RPM	1725								
FRAME	184TC	HZ	60	PH	1				
SER.F.	1.00	CODE	J	DES	L	CL	F		
NEMA-NOM-EFF	80	PF	88						
RATING	40C AMB-CONT								
CC									
DE	6206	ODE	6205						
ENCL	TEFC	SN							

Parts list

Part number	Description	Quantity
SA273491	SA 36Q158W279G1	1.000 ea
RA260087	RA 36Q158W279G1	1.000 ea
OC3030F11SP	CAPACITOR 30 MFD 370 VAC	1.000 ea
TPLED1027SP	THERMAL 1PH 1.5 MAN REF LED989 TDR #5817	1.000 ea
EC1216C06SP	ELEC CAP, 216-259 MFD, 250V, 2.06D X 4.	2.000 ea
HA2001A09	SPACER, .218 ID X .937 LG	2.000 ea
RM1015	BOOT FOR 1.50 MANUAL THERMALS	1.000 ea
51XN1032A28	10-32 X 1 3/4 HX WS SL SR	2.000 ea
XY1032A02	10-32 HEX NUT DIRECTIONAL SERRATION	2.000 ea
11XW1032G06	10-32 X .38, TAPTITE II, HEX WSHR SLTD U	1.000 ea
HW3001B02	BRASS CUP WASHER W/GROUND SYMBOL TAB,	1.000 ea
36FE3104A02	FREP MACH W/O GR SR, RAISED FH PADS	1.000 ea
13XF0832A08	8-32 X.50 PAN HD,SLTD, TYPE F SCREW, ZIN	2.000 ea
37CB3805A06	CAPAC BOX, DIECAST W/CAST LEAD & THERMAL	1.000 ea
37GS3002	GASKET, CAPACITOR BOX	2.000 ea
10XN2520A08	1/4-20X1/2 HEX HEAD CAP	4.000 ea
HA6003A16	CLAMP, CAPACITOR SIZE 8 1/4 X 1 1/2 PL	1.000 ea
51XW0832A07	8-32 X .44, TAPTITE II, HEX WSHR SLTD SE	2.000 ea
HA1005A03SP	SLINGER, OD 1.750, ID .938, 205 BRG	1.000 ea
HW4600B36SP	V-RING SLINGER 1.188 X 1.690 X .24 VITON	1.000 ea
HW5100A05	WVY WSHR F/205 & 304 BRGS	1.000 ea
36EP3301A64	PULLEY 182-4TC ENCL 206 BRG W/SEAL W/O	1.000 ea
HW4600H12	SEAL 1.156 X 1.874 X 0.250 SINGLE LIP DB	1.000 ea
10XN2520A24	1/4-20X 1 1/2 HEX HD X	4.000 ea
HW1001A25	LOCKWASHER 1/4, ZINC PLT .493 OD, .255 I	4.000 ea
HA3101A28	THRUBOLT 1/4-20 X 12.500 OHIO ROD	4.000 ea
36FN3000A01SP	EXFN, PLASTIC, 7.00 OD, .912 ID	1.000 ea
51XB1214A16	12-14X1.00 HXWSSLD SERTYB	1.000 ea
36FH4009A107	IEC FH NO GREASER W/O DIMPLES NOTCH @9,	1.000 ea
51XW1032A06	10-32 X .38, TAPTITE II, HEX WSHR SLTD S	3.000 ea
37CB4502	CAPAC BOX LID, STAMPED PLATED	1.000 ea

37GS3003SP	GASKET, CAPAC BOX LID X	1.000 ea
51XW0832A07	8-32 X .44, TAPTITE II, HEX WSHR SLTD SE	6.000 ea
HW2501E16	KEY, 1/4 SQ X 1.750	1.000 ea
HA7000A02	KEY RETAINER RING, 1 1/8 DIA, 1 3/8 DIA	1.000 ea
85XU0407S04	4X1/4 U DRIVE PIN STAINLESS	2.000 ea
LB1087	LABEL, MANUAL RESET (ROLL LABEL)	1.000 ea
HW3200A01	3/8-16X3/4 EYEBOLT WELDED F/S	1.000 ea
LB1624	COMBINED WARNING LABEL, ISO/ANSI PICTOGR	1.000 ea
WD1000A15	3-520132-2 AMP FLAG (4M/RL NON-CANC/NON-	6.000 ea
MJ1000A02	GREASE, POLYREX EM EXXON	0.050 lb
MG1025C02	WILKOFASG, 787.105, TAN	0.022 ga
TP5059	GENERIC WELDED THERMAL, 7" LEAD KIT	1.000 ea
SP5172A11	37 TYPE LC TORQ STAT SWITCH LEAD ASSEMBL	1.000 ea
LC0002	CONNECTION LABEL	1.000 ea
MN416A01	TAG-INSTAL-MAINT no wire (2500bx)4/22	1.000 ea
NP1280L	ALUM FARM DUTY UL CC THERMAL	1.000 ea
GOPA1000	PKG GRP, PRINT PK1026A06	1.000 ea
PK3082	STYROFOAM CRADLE	1.000 ea

AC Induction Motor Performance Data

Record # 10712

Typical performance - not guaranteed values

Winding: 36WGW279-R001		Type: 3646LC		Enclosure: TEFC	
Nameplate Data			230 V, 60 Hz: Single Voltage Motor		
Rated Output (HP)	5	Full Load Torque	15 LB-FT		
Volts	230	Start Configuration	direct on line		
Full Load Amps	23	Breakdown Torque	43 LB-FT		
R.P.M.	1725	Pull-up Torque	36 LB-FT		
Hz	60	Locked-rotor Torque	46 LB-FT		
NEMA Design Code	L	Starting Current	163 A		
Service Factor (S.F.)	1	No-load Current	10 A		
NEMA Nom. Eff.	80	Line-line Res. @ 25°C	0.353 Ω A Ph 2.23 Ω B Ph		
Rating - Duty	40C AMB-CONT	Temp. Rise @ Rated Load	97°C		

Load Characteristics 230 V, 60 Hz, 5 HP

% of Rated Load	25	50	75	100	125	150
Power Factor	54	71	85	89	89	91
Efficiency	65	76.1	81.5	80.8	79.3	75.5
Speed	1786	1769	1750	1732	1713	1687
Line amperes	12.7	14	18.5	22.6	27.3	33.5

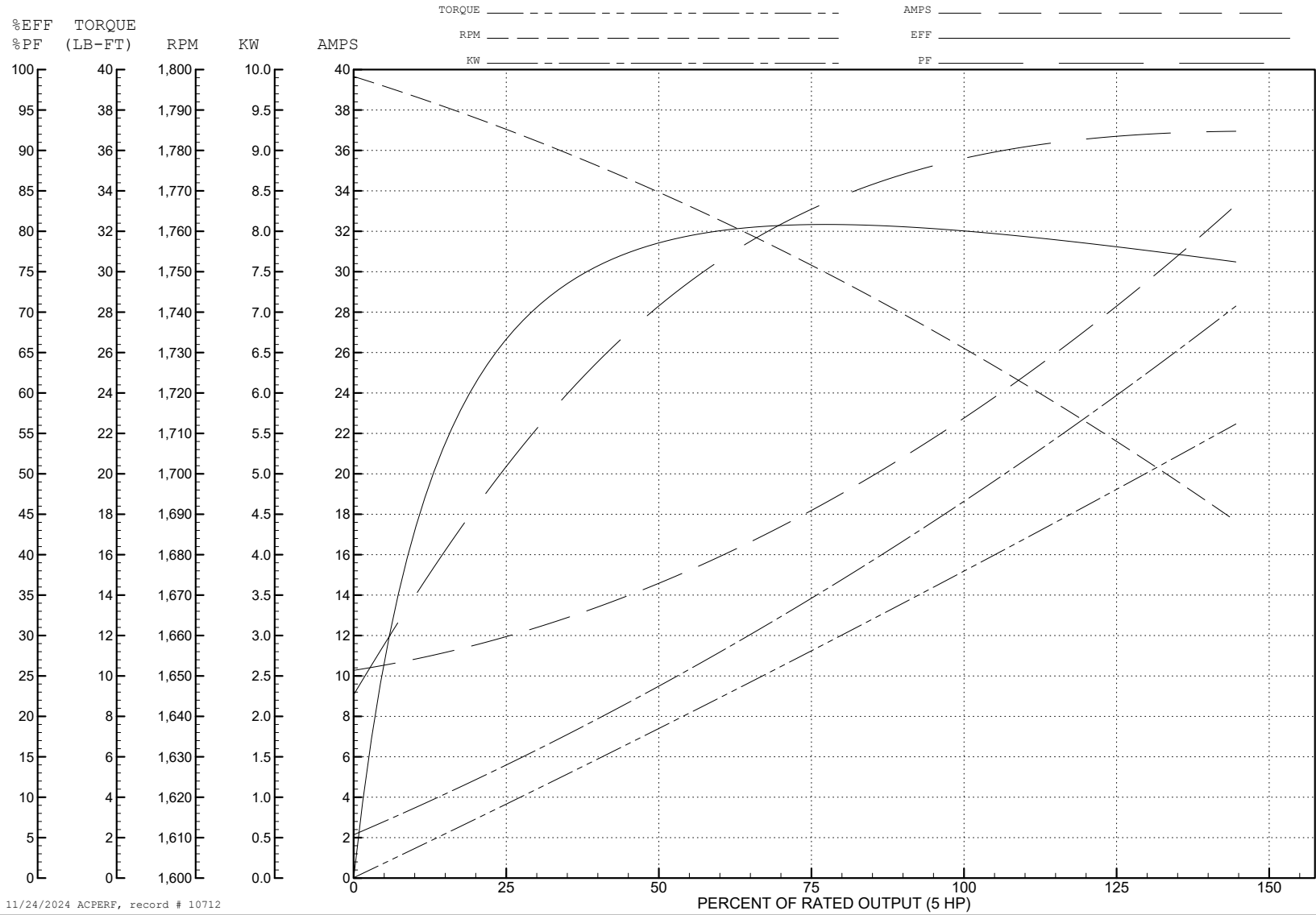
ABB Motors and Mechanical Inc.

WINDING # 36WG279

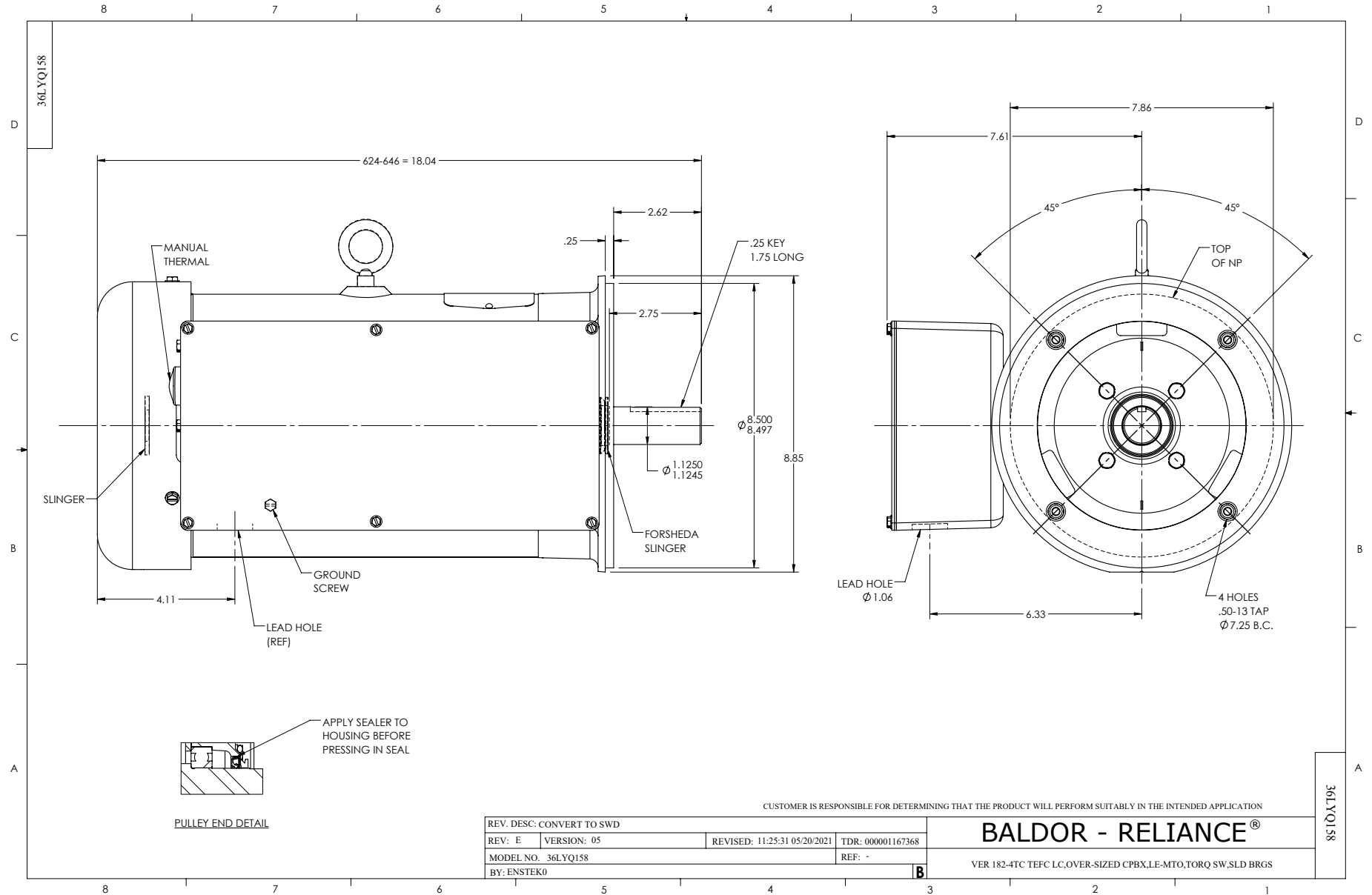
Typical performance - not guaranteed values.

5 HP 1 PH 60 HZ 1725 RPM 230 V 3646LC

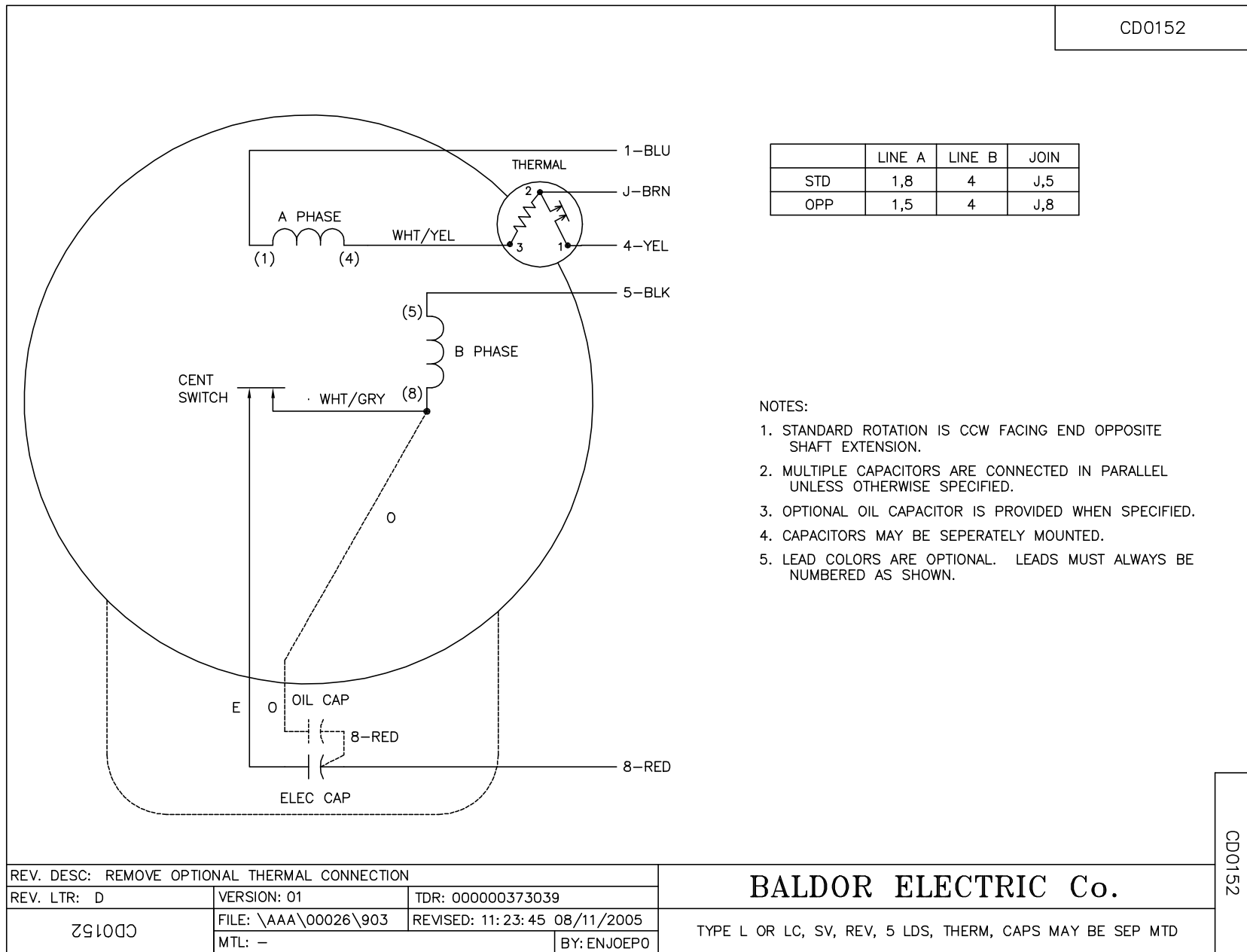
TORQUES (LB-FT): PO=43 PU=36 LR=46 LRA=163



11/24/2024 ACPERF, record # 10712



CD0152



REV. DESC: REMOVE OPTIONAL THERMAL CONNECTION		
REV. LTR: D	VERSION: 01	TDR: 000000373039
CD0152	FILE: \AAA\00026\903	REVISED: 11: 23: 45 08/11/2005
	MTL: -	BY: ENJOEPO

BALDOR ELECTRIC Co.

TYPE L OR LC, SV, REV, 5 LDS, THERM, CAPS MAY BE SEP MTD

CD0152