

**BALDOR • RELIANCE**

---

# Customer information packet

## VHECP3663T

5HP, 3490RPM, 3PH, 60HZ, 184, HP, 0632M, TEFC, F

Class - None

Division - Not Applicable

## Specifications

Enclosure	TEFC
Frame	184HP
Frame Material	Iron
Frequency	60.00 Hz
Haz Area Class and Group	None
Haz Area Division	Not Applicable
Motor Letter Type	Three Phase
Output @ Frequency	5.000 HP @ 60 HZ
Phase	3
Synchronous Speed @ Frequency	3600 RPM @ 60 HZ
Voltage @ Frequency	460.0 V @ 60 HZ 230.0 V @ 60 HZ
Agency Approvals	CSA CSA EEV UR
Ambient Temperature	40 °C
Auxillary Box	No Auxillary Box
Auxillary Box Lead Termination	None
Base Indicator	No Mounting
Bearing Grease Type	Polyrex EM (-20F +300F)
Blower	None
Current @ Voltage	12.500 A @ 208.0 V 5.700 A @ 460.0 V 11.400 A @ 230.0 V
Design Code	A
Drip Cover	Drip Cover
Duty Rating	CONT
Efficiency @ 100% Load	90.2 %
Electrically Isolated Bearing	Not Electrically Isolated
Feedback Device	NO FEEDBACK
Front Face Code	Standard
Front Shaft Indicator	None

## Part detail

Revision	U
Type	AC
Mech. spec.	06F448
Base	
Status	PRD/A
Elec. spec.	06WGW730
Layout	06LYF448
Eff. date	05-02-2023
CD Diagram	CD0005
Poles	02
Leads	9#16
Proprietary	False
Created date	10-31-2005

Heater Indicator	No Heater
High Voltage Full Load Amps	5.7 a
Insulation Class	F
Inverter Code	Inverter Ready
KVA Code	M
Lifting Lugs	Vertical Lifting Lugs
Locked Bearing Indicator	Locked Bearing
Motor Lead Exit	Ko Box
Motor Lead Quantity/Wire Size	9 @ 16 AWG
Motor Lead Termination	Flying Leads
Motor Standards	NEMA
Motor Type	0632M
Mounting Arrangement	F1
Number of Poles	2
Overall Length	22.18 IN
Power Factor	90
Product Family	Super-E Chemical Processing
Pulley End Bearing Type	Ball
Pulley Face Code	P-Base
Pulley Shaft Indicator	P-Base Groove & Key
Rodent Screen	None
Service Factor	1.15
Shaft Diameter	1.125 IN
Shaft Extension Location	Pulley End
Shaft Ground Indicator	No Shaft Grounding
Shaft Rotation	Reversible
Shaft Slinger Indicator	No Slinger
Speed	3490 rpm
Speed Code	Single Speed
Starting Method	Direct on line
Thermal Device - Bearing	None
Thermal Device - Winding	None
Vibration Sensor Indicator	No Vibration Sensor
Winding Thermal 1	None

**Winding Thermal 2**

**None**

---

**Nameplate**

---

<b>NP1260</b>									
<b>CAT.NO.</b>	VHECP3663T								
<b>SPEC.</b>	06F448W730								
<b>HP</b>	5								
<b>VOLTS</b>	230/460								
<b>AMP</b>	11.4/5.7								
<b>RPM</b>	3490								
<b>FRAME</b>	184HP	<b>HZ</b>	60	<b>PH</b>	3				
<b>SER.F.</b>	1.15	<b>CODE</b>	M	<b>DES</b>	A	<b>CL</b>	F		
<b>NEMA-NOM-EFF</b>	90.2	<b>PF</b>	90						
<b>RATING</b>	40C AMB-CONT								
<b>CC</b>	010A								
<b>DE</b>	6307	<b>ODE</b>	6206						
<b>ENCL</b>	TEFC	<b>SN</b>							

---

## Parts list

Part number	Description	Quantity
SA135147	SA 06F448W730	1.000 ea
RA124914	RA 06F448W730	1.000 ea
34FN3002B02	EXTERNAL FAN, PLASTIC, .905/.907 HUB W/	1.000 ea
06CB1001A85G	06CB W/1.00 NPT @6,.25-20 GRD,#26 DRAIN	1.000 ea
RM1016	LEAD SEPARATOR GASKET - 305/306 C.P.MOTO	1.000 ea
51XF2520A16	SCREW,HEX SER SLT HD,ZN 1/4-20X1.00LG TD	2.000 ea
WD1000B16	T&B CX70TN OR L70P TERMINAL LUG	2.000 ea
10XN2520G06	1/4 20X3/8 HX HD CAP, GREEN	2.000 ea
HW1001S25	WASHER, 1/4 SPLT LK, STAINLESS STEEL	2.000 ea
HW4600B36SP	V-RING SLINGER 1.188 X 1.690 X .24 VITON	1.000 ea
36EP1100A25G	FREP ENCL. 206 BRG.,GRSR,REL,#26 DRAIN(G	1.000 ea
HW4500A32	FIT./EXT 1698-B (ALEMITE)GREASE FITTING	1.000 ea
HW4500A17	317400 ALEMITE GREASE RELIEF	1.000 ea
HW5100A06	W2420-025 WVY WSHR (WB)	1.000 ea
36EP1505A02G	SPL PU E.P. - ENCL.- 307 BRG - NEMA 182L	1.000 ea
HW4500A01	1641B(ALEMITE)400 UNIV, GREASE FITT	1.000 ea
HW4500A17	317400 ALEMITE GREASE RELIEF	1.000 ea
12XN1032S22	10-32 X 1 3/8 SLOT HEX, STAINLESS STEEL	2.000 ea
10XN2520S48	1/4-20 X 3 HEX HEAD SS	2.000 ea
HA3101S46	THRUBOLT 1/4-20 X 10.00	4.000 ea
51XB1214A16	12-14X1.00 HXWSSLD SERTYB	1.000 ea
06FH1004A03G	FAN HOUSING MACH, W/GREASER AND DRIP CVR	1.000 ea
10XN2520S24	1/4-20X 1 1/2 HEX HD SS	3.000 ea
39FH4500A03G	DRIP COVER, STAMPED (GRAY EPOXY)	1.000 ea
XY3816S12	3/8-16 HEX FINISHED NUT SS	2.000 ea
HA3400S09	STUD-3/8-16 X 2.75	4.000 ea
HW1001S38	WASHER, 3/8 SPLT LK, STAINLESS STEEL	6.000 ea
HW3208S01	3/8-16 EYE NUT	2.000 ea
06CB1503A01G	LIPPED CONDUIT BOX LID, MACH GRAY EPOXY	1.000 ea
06GS1009	GASKET, KOBX LID, 1/8" THICK BLACK NEOPR	1.000 ea
10XN2520S12	BOLT 1/4 - 20X 3/4 HEX HEAD SS (F/S)	2.000 ea

HW1001S25	WASHER, 1/4 SPLT LK, STAINLESS STEEL	2.000 ea
HW4600B56	V-RING 1.250 X 1.456 X 0.185 (COMPRESS)	1.000 ea
HW2502E16	#303 SS,SQ KEY 1/4 X 1.750	1.000 ea
HA7000A02	KEY RETAINER RING, 1 1/8 DIA, 1 3/8 DIA	1.000 ea
MJ5001A27	32220KN GRAY SEALER *MIN BUY 4 QTS=1GAL	0.001 qt
MJ5001A14	DYNAPRO SEALANT, CP MTR VC#2508050 (603	0.001 ea
LB1624	COMBINED WARNING LABEL, ISO/ANSI PICTOGR	1.000 ea
85XU0407S04	4X1/4 U DRIVE PIN STAINLESS	2.000 ea
MJ1000A02	GREASE, POLYREX EM EXXON	0.050 lb
MG1025N19	WILKOFAST, 778.50, RELIANCE BLUE-GREEN 8	0.028 ga
LC0005	CONN.DIA.,TY M,9-LD,DUAL VOLT,REVERSING	1.000 ea
NP1260	SS CP SUPER-E, CURUS-E, NEMA PREM, CC	1.000 ea
GOPA1000	PKG GRP, PRINT PK1026A06	1.000 ea
PK3082	STYROFOAM CRADLE	2.000 ea
PK6503	STRUCTURAL WOOD PSC 1X6X8	1.000 ea
MN416A01	TAG-INSTAL-MAINT no wire (2500bx)4/22	1.000 ea

**AC Induction Motor Performance Data**

Record # 35536

Typical performance - not guaranteed values

Winding: 06WGW730-R016		Type: 0632M	Enclosure: TEFC	
<b>Nameplate Data</b>			<b>460 V, 60 Hz: High Voltage Connection</b>	
Rated Output (HP)	5	Full Load Torque	7.54 LB-FT	
Volts	230/460	Start Configuration	direct on line	
Full Load Amps	11.4/5.7	Breakdown Torque	40.1 LB-FT	
R.P.M.	3490	Pull-up Torque	30.6 LB-FT	
Hz	60 Phase	Locked-rotor Torque	36.9 LB-FT	
NEMA Design Code	A KVA Code	Starting Current	64.8 A	
Service Factor (S.F.)	1.15	No-load Current	2.08 A	
NEMA Nom. Eff.	90.2 Power Factor	Line-line Res. @ 25°C	1.93 Ω	
Rating - Duty	40C AMB-CONT	Temp. Rise @ Rated Load	51°C	
S.F. Amps		Temp. Rise @ S.F. Load	62°C	
		Locked-rotor Power Factor	45	
		Rotor inertia	0.143 LB-FT <sup>2</sup>	

**Load Characteristics 460 V, 60 Hz, 5 HP**

% of Rated Load	25	50	75	100	125	150	S.F.
Power Factor	55	76	85	90	93	93	92
Efficiency	84.5	89.4	90.8	90.6	90	89	90.2
Speed	3570	3544	3517	3489	3458	3426	3470
Line amperes	2.54	3.47	4.6	5.76	7.03	8.46	6.52



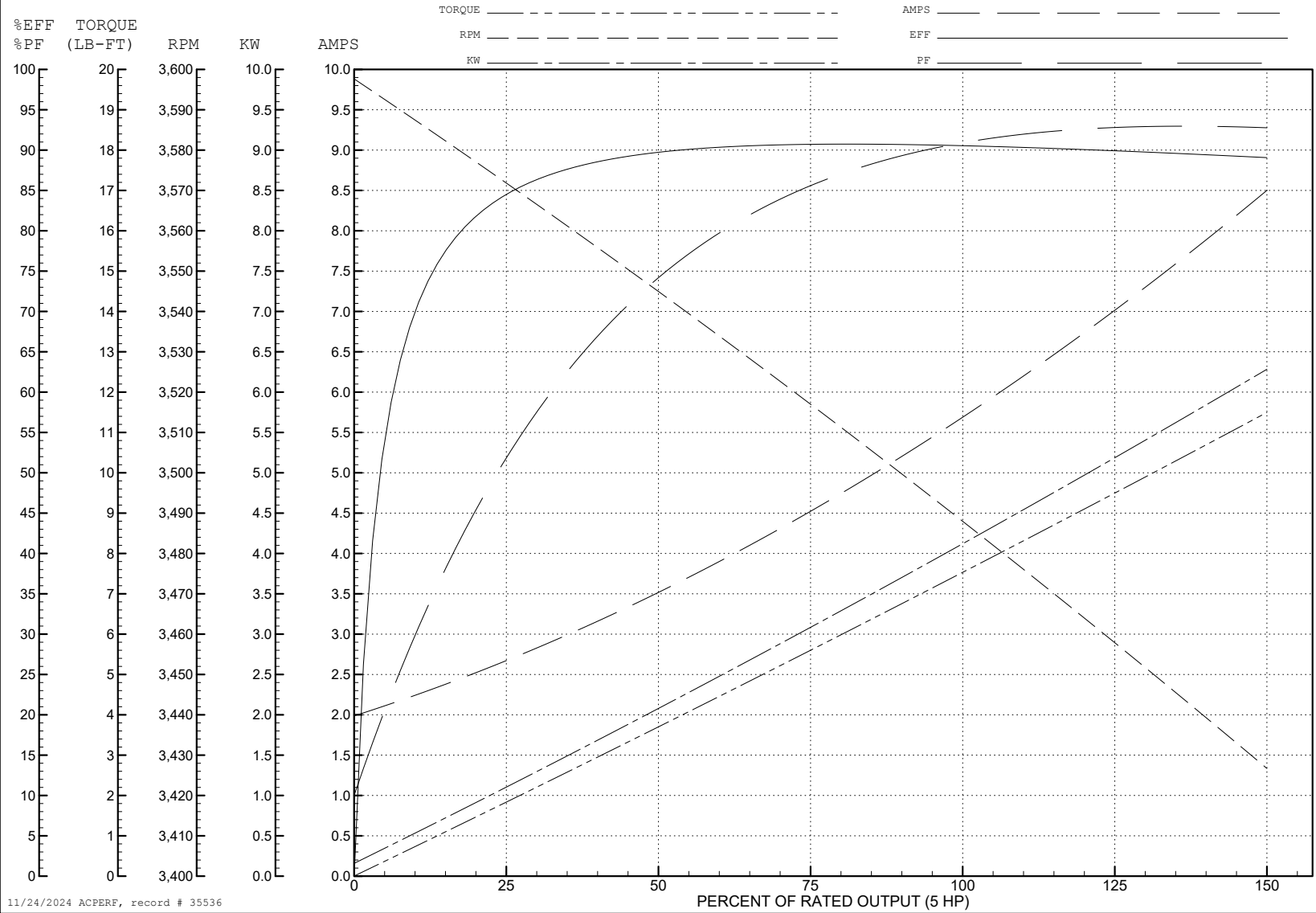
ABB Motors and Mechanical Inc.

WINDING # 06WGW730

Typical performance - not guaranteed values.

5 HP 3 PH 60 HZ 3490 RPM 460 V 0632M

TORQUES (LB-FT): PO=40.1 PU=30.6 LR=36.9 LRA=64.8



11/24/2024 ACPERF, record # 35536

**AC Induction Motor Performance Data**

Record # 51599

Typical performance - not guaranteed values

<b>Winding: 06WGW730-R016</b>		<b>Type: 0632M</b>		<b>Enclosure: TEFC</b>	
<b>Nameplate Data</b>			<b>380 V, 60 Hz: High Voltage Connection</b>		
<b>Rated Output (HP)</b>	5	<b>Full Load Torque</b>	7.65 LB-FT		
<b>Volts</b>	230/460	<b>Start Configuration</b>	direct on line		
<b>Full Load Amps</b>	11.4/5.7	<b>Breakdown Torque</b>	26.5 LB-FT		
<b>R.P.M.</b>	3490	<b>Pull-up Torque</b>	19.7 LB-FT		
<b>Hz</b>	60 <b>Phase</b>	3	<b>Locked-rotor Torque</b>	23.7 LB-FT	
<b>NEMA Design Code</b>	A <b>KVA Code</b>	M	<b>Starting Current</b>	51.9 A	
<b>Service Factor (S.F.)</b>	1.15	<b>No-load Current</b>	1.49 A		
<b>NEMA Nom. Eff.</b>	90.2 <b>Power Factor</b>	90	<b>Line-line Res. @ 25°C</b>	2.04 Ω	
<b>Rating - Duty</b>	40C AMB-CONT		<b>Temp. Rise @ Rated Load</b>	60°C	
<b>S.F. Amps</b>			<b>Temp. Rise @ S.F. Load</b>	77°C	
			<b>Locked-rotor Power Factor</b>	43.2	
			<b>Rotor inertia</b>	0.143 LB-FT <sup>2</sup>	

**Load Characteristics 380 V, 60 Hz, 5 HP**

<b>% of Rated Load</b>	<b>25</b>	<b>50</b>	<b>75</b>	<b>100</b>	<b>125</b>	<b>150</b>	<b>S.F.</b>
<b>Power Factor</b>	70	85	90	93	94	94	94
<b>Efficiency</b>	87	90.2	90.4	89.3	87.7	85.6	88.3
<b>Speed</b>	3559	3522	3482	3440	3391	3337	3411
<b>Line amperes</b>	2.33	3.7	5.26	6.84	8.58	10.6	7.88

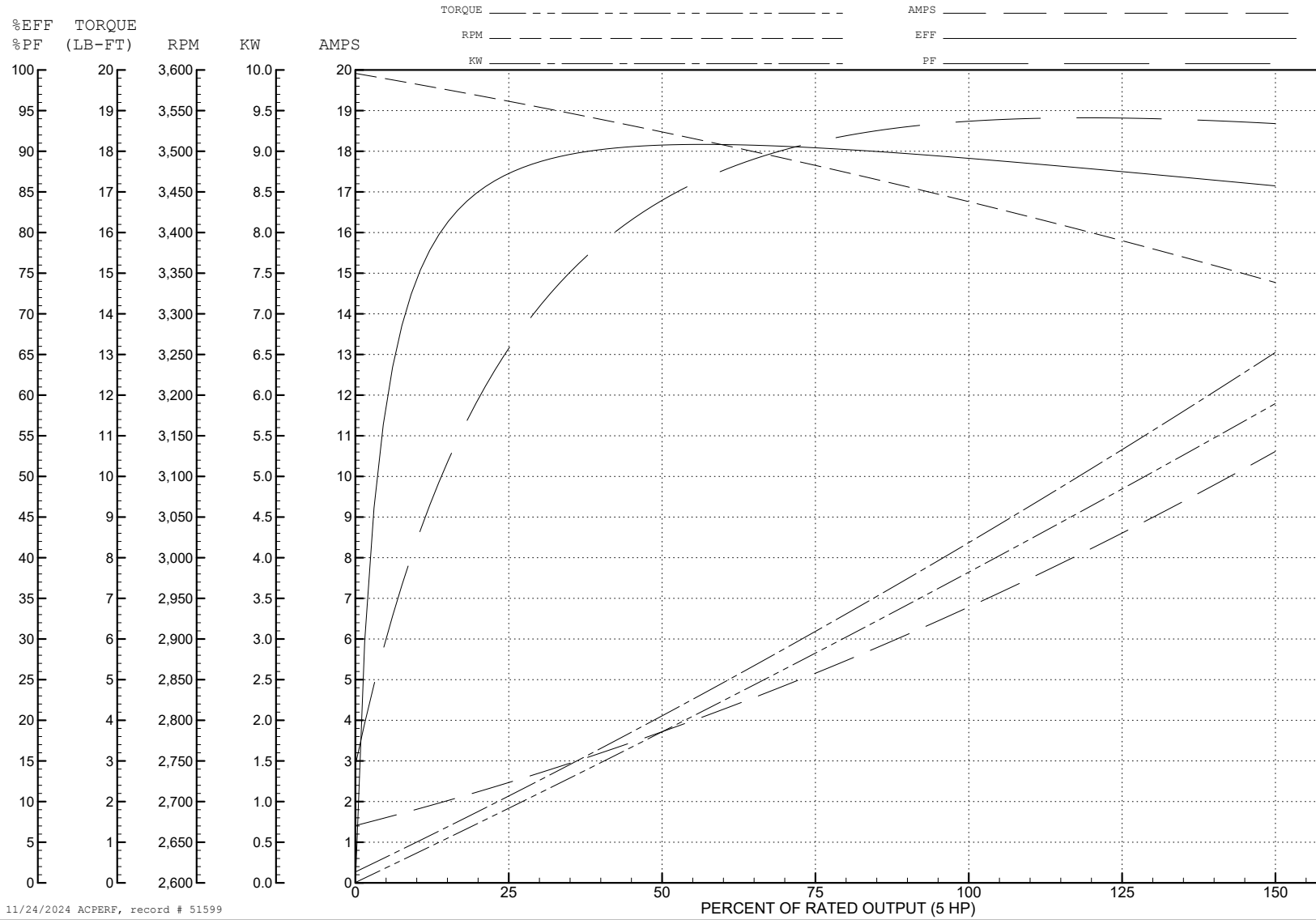
ABB Motors and Mechanical Inc.

WINDING # 06WGW730

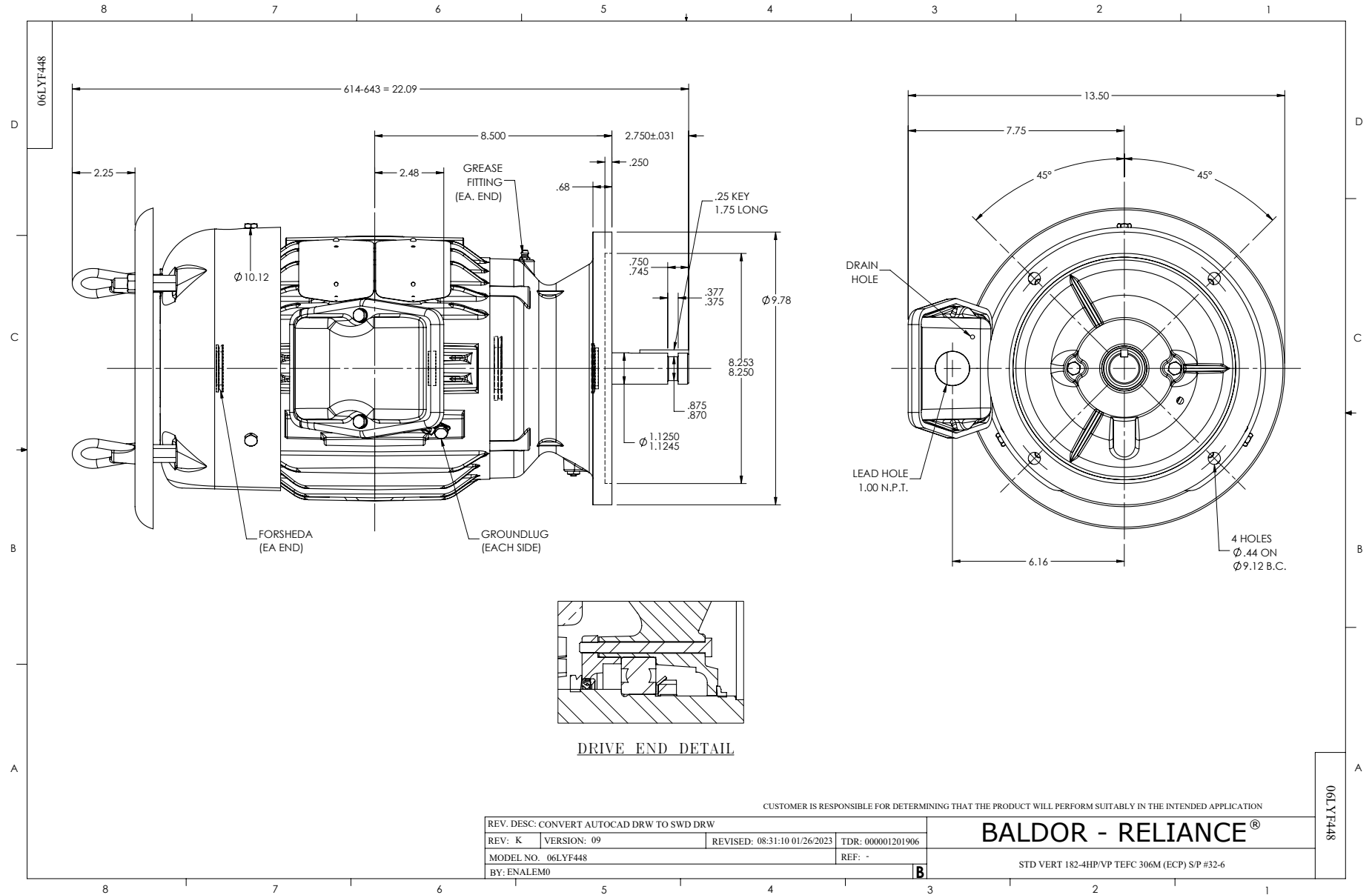
Typical performance - not guaranteed values.

5 HP 3 PH 60 HZ 3490 RPM 380 V 0632M

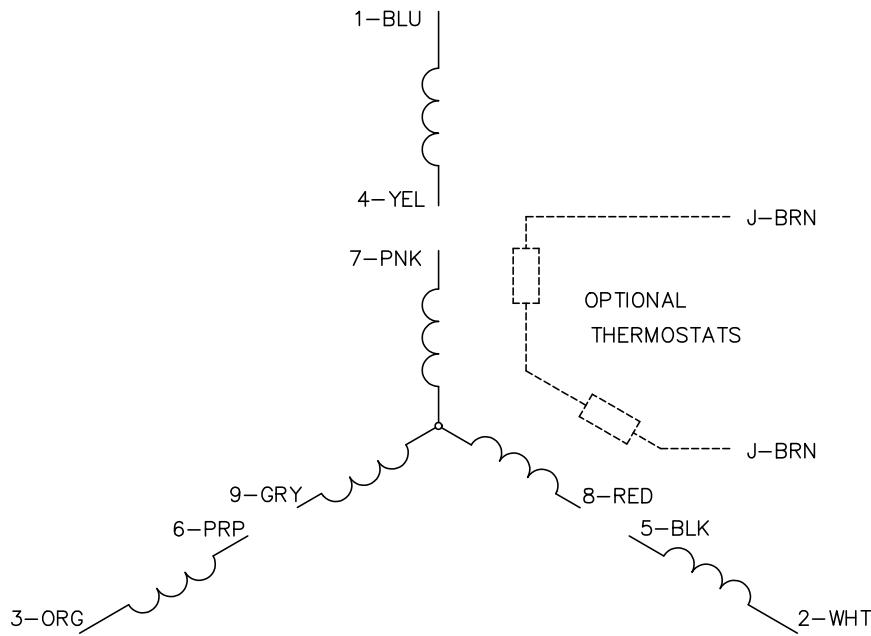
TORQUES (LB-FT): PO=26.5 PU=19.7 LR=23.7 LRA=51.9



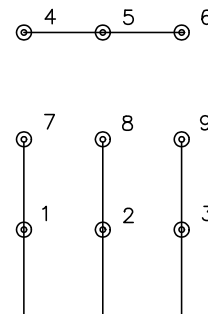
11/24/2024 ACPERF, record # 51599



CD0005

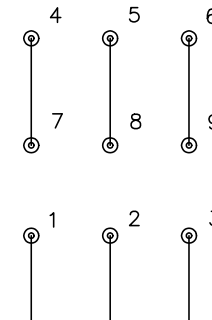


LOW VOLTAGE  
(2Y)



LINE

HIGH VOLTAGE  
(1Y)



LINE

**NOTES:**

1. INTERCHANGE ANY TWO LINE LEADS TO REVERSE ROTATION.
2. OPTIONAL THERMOSTATS ARE PROVIDED WHEN SPECIFIED.
3. ACTUAL NUMBER OF INTERNAL PARALLEL CIRCUITS MAY BE A MULTIPLE OF THOSE SHOWN ABOVE.
4. LEAD COLORS ARE OPTIONAL. LEADS MUST ALWAYS BE NUMBERED AS SHOWN.

CD0005

REV. DESC: REVISE TO SHOW OPTIONAL COLORS			
REV. LTR: E	BY: JLP	REVISED: 01/19/99 10:15	TDR: 0171435
S00000		FILE: AAA00005140	MDL: -
		MTL: -	

**BALDOR ELECTRIC Co.**

3PH, DV, 9 LEADS