

BALDOR • RELIANCE

Customer information packet

VHECP3769T

7.5HP, 3510RPM, 3PH, 60HZ, 213HP, 0726M, TEFC

Class - None

Division - Not Applicable

Specifications

Enclosure	TEFC
Frame	213HP
Frame Material	Iron
Frequency	60.00 Hz
Haz Area Class and Group	None
Haz Area Division	Not Applicable
Motor Letter Type	Three Phase
Output @ Frequency	7.500 HP @ 60 HZ
Phase	3
Synchronous Speed @ Frequency	3600 RPM @ 60 HZ
Voltage @ Frequency	230.0 V @ 60 HZ 460.0 V @ 60 HZ
Agency Approvals	CSA EEV CSA UR
Ambient Temperature	40 °C
Auxillary Box	No Auxillary Box
Auxillary Box Lead Termination	None
Base Indicator	No Mounting
Bearing Grease Type	Polyrex EM (-20F +300F)
Blower	None
Current @ Voltage	18.000 A @ 230.0 V 9.000 A @ 460.0 V
Design Code	B
Drip Cover	Drip Cover
Duty Rating	CONT
Efficiency @ 100% Load	89.5 %
Electrically Isolated Bearing	Not Electrically Isolated
Feedback Device	NO FEEDBACK
Front Face Code	Drip Cover Mounting
Front Shaft Indicator	None
Heater Indicator	No Heater

Part detail

Revision	H
Type	AC
Mech. spec.	07K215
Base	
Status	PRD/A
Elec. spec.	07WGY328
Layout	07LYK215
Eff. date	07-25-2024
CD Diagram	CD0005
Poles	02
Leads	9#14
Proprietary	False
Created date	02-25-2016

High Voltage Full Load Amps	9.0 a
Insulation Class	F
Inverter Code	Inverter Ready
KVA Code	H
Lifting Lugs	Vertical Lifting Lugs
Locked Bearing Indicator	Locked Bearing
Motor Lead Exit	Ko Box
Motor Lead Quantity/Wire Size	9 @ 14 AWG
Motor Lead Termination	Flying Leads
Motor Standards	NEMA
Motor Type	0726M
Mounting Arrangement	F1
Number of Poles	2
Overall Length	22.51 IN
Power Factor	86
Product Family	Chemical Processing (Not DC)
Pulley End Bearing Type	Ball
Pulley Face Code	P-Base
Pulley Shaft Indicator	Standard
Rodent Screen	None
RoHS Status	ROHS COMPLIANT
Service Factor	1.15
Shaft Diameter	1.125 IN
Shaft Extension Location	Pulley End
Shaft Ground Indicator	No Shaft Grounding
Shaft Rotation	Reversible
Shaft Slinger Indicator	No Slinger
Speed	3510 rpm
Speed Code	Single Speed
Starting Method	Direct on line
Thermal Device - Bearing	None
Thermal Device - Winding	None
Vibration Sensor Indicator	No Vibration Sensor
Winding Thermal 1	None

Winding Thermal 2

None

Nameplate

NP1260									
CAT.NO.	VHECP3769T								
SPEC.	07K215Y328G1								
HP	7.5								
VOLTS	230/460								
AMP	18/9								
RPM	3510								
FRAME	213HP	HZ	60	PH	3				
SER.F.	1.15	CODE	H	DES	B	CL	F		
NEMA-NOM-EFF	89.5	PF	86						
RATING	40C AMB-CONT								
CC	010A								
DE	6309	ODE	6206						
ENCL	TEFC	SN							

Parts list

Part number	Description	Quantity
SA315964	SA 07K215Y328G1	1.000 ea
RA303510	RA 07K215Y328G1	1.000 ea
36FN3000C02SP	EXFN, PLASTIC, 5.25 OD, 1.175 ID	1.000 ea
HA6283A01	SP'L EYE BOLT BRACKET FOR 306 & 307 MTRS	2.000 ea
10XN3816K12	3/8-16 X 3/4 HEX HD CAP GRADE 5	2.000 ea
HW1001A38	LOCKWASHER 3/8, ZINC PLT .688 OD, .382 I	2.000 ea
HW4600B36SP	V-RING SLINGER 1.188 X 1.690 X .24 VITON	1.000 ea
10XN2520A06	1/4 20X3/8 HX HD CAP	2.000 ea
HW4600B44	V-RING SLINGER 1.500 X 1.810 X .28 VITON	1.000 ea
HW1001A25	LOCKWASHER 1/4, ZINC PLT .493 OD, .255 I	2.000 ea
WD1000B16	T&B CX70TN OR L70P TERMINAL LUG	1.000 ea
09CB1001A26G	CONDUIT BOX, MACH W/GRAY EPOXY, W/1.50 N	1.000 ea
RM1017	LEAD SEPERATOR GASKET MODEL 307 1/8" THK	1.000 ea
19XW2520A16	SCREW,1/4-20X1 TAPTITE-II OR ROLOC 91	4.000 ea
11XW1032G06	10-32 X .38, TAPTITE II, HEX WSHR SLTD U	1.000 ea
HW1001A10	WASHER, #10 SPLT LK, ZN X	1.000 ea
WD1000B17	T&B CX35TN OR L35P TERMINAL LUG	1.000 ea
37EP1100B16G	FR EP 37L TEFC W/GRSR-RELIEF, NO DRAIN (1.000 ea
HW4500A32	FIT./EXT 1698-B (ALEMITE)GREASE FITTING	1.000 ea
HW4500A17	317400 ALEMITE GREASE RELIEF	1.000 ea
HW5100A06	W2420-025 WVY WSHR (WB)	1.000 ea
37EP1504A12G	PULLEY 213-5LP 254LP ENCL 309 BRG W/ SEA	1.000 ea
HW4600B53	SEAL 1.688 X 2.275 X 0.312 SINGLE LIP DB	1.000 ea
HW4500A01	1641B(ALEMITE)400 UNIV, GREASE FITT	1.000 ea
HW4500A17	317400 ALEMITE GREASE RELIEF	1.000 ea
10XN2520A52	1/4-20X 3 .25 HEX HD CAP ZN	2.000 ea
HW1001A25	LOCKWASHER 1/4, ZINC PLT .493 OD, .255 I	2.000 ea
51XB1214A20	12-14X1.25 HXWSSLD SERTYB	1.000 ea
07FH1001A06G	307 FH FOR MTG TO FR E.P. W/GREASER & DR	1.000 ea
10XN2520A24	1/4-20X 1 1/2 HEX HD X	3.000 ea
WD4100A02	DP-1000 HEYCO PLUG OR 62MP1000 MICRO PL	1.000 ea

HW1001A25	LOCKWASHER 1/4, ZINC PLT .493 OD, .255 I	3.000 ea
40FH2500A04G	P'L DRIP COVER MODEL 40- OPEN MACH, GRA	1.000 ea
HA2086A03	.375 X 1.0 HVY-FT SPACER SPIRAL # 62434	4.000 ea
10XN3816A32	3/8-16 X 2 HEX HD CAP SCREW	4.000 ea
HW1001A38	LOCKWASHER 3/8, ZINC PLT .688 OD, .382 I	4.000 ea
09CB1504A01G	LIPPED CONDUIT BOX LID, MACH GRAY EPOXY	1.000 ea
09GS1001A01	GASKET, BOX LID, 1/8 THICK BLACK NEOPREN	1.000 ea
10XN2520A12	1/4-20 X 3/4 HEX HEAD CAP	2.000 ea
HW1001A25	LOCKWASHER 1/4, ZINC PLT .493 OD, .255 I	2.000 ea
MJ5001A27	32220KN GRAY SEALER *MIN BUY 4 QTS=1GAL	0.001 qt
MJ5001A14	DYNAPRO SEALANT, CP MTR VC#2508050 (603	0.001 ea
85XU0407S04	4X1/4 U DRIVE PIN STAINLESS	2.000 ea
LB1624	COMBINED WARNING LABEL, ISO/ANSI PICTOGR	1.000 ea
HW2501E18	KEY, 1/4 SQ X 2.000	1.000 ea
HA7000A02	KEY RETAINER RING, 1 1/8 DIA, 1 3/8 DIA	1.000 ea
MJ1000A02	GREASE, POLYREX EM EXXON	0.050 lb
HA3104A13	THRUBOLT 5/16-18 X 11.750 OHIO ROD	4.000 ea
MG1025N19	WILKOFAS, 778.50, RELIANCE BLUE-GREEN 8	0.036 ga
LC0005	CONN.DIA.,TY M,9-LD,DUAL VOLT,REVERSING	1.000 ea
LB1002N	LABEL,MARINE DUTY (ON ROLLS)	1.000 ea
NP1260	SS CP SUPER-E, CURUS-E, NEMA PREM, CC	1.000 ea
07PA1097	PKG GRP, 07 CAST IRON 2X4 RISERS PK1181	1.000 ea
07PA1095	PKG GRP, VER 07 CAST IRON	1.000 ea
MN416A01	TAG-INSTAL-MAINT no wire (2500bx)4/22	1.000 ea

AC Induction Motor Performance Data

Record # 46530

Typical performance - not guaranteed values

Winding: 07WGY328-R005		Type: 0726M	Enclosure: TEFC	
Nameplate Data			460 V, 60 Hz: High Voltage Connection	
Rated Output (HP)	7.5	Full Load Torque	11.2 LB-FT	
Volts	230/460	Start Configuration	direct on line	
Full Load Amps	18/9	Breakdown Torque	38.8 LB-FT	
R.P.M.	3510	Pull-up Torque	20.4 LB-FT	
Hz	60 Phase	Locked-rotor Torque	23.5 LB-FT	
NEMA Design Code	B KVA Code	Starting Current	61.1 A	
Service Factor (S.F.)	1.15	No-load Current	3.54 A	
NEMA Nom. Eff.	89.5 Power Factor	Line-line Res. @ 25°C	1.19 Ω	
Rating - Duty	40C AMB-CONT	Temp. Rise @ Rated Load	44°C	
S.F. Amps		Temp. Rise @ S.F. Load	53°C	
		Locked-rotor Power Factor	34	
		Rotor inertia	0.237 LB-FT ²	

Load Characteristics 460 V, 60 Hz, 7.5 HP

% of Rated Load	25	50	75	100	125	150	S.F.
Power Factor	52	74	82	87	90	89	89
Efficiency	83.8	89.4	90.5	90.7	89.6	88.3	90
Speed	3581	3559	3537	3512	3486	3456	3496
Line amperes	4.04	5.31	7.04	8.9	10.9	13.3	10.1

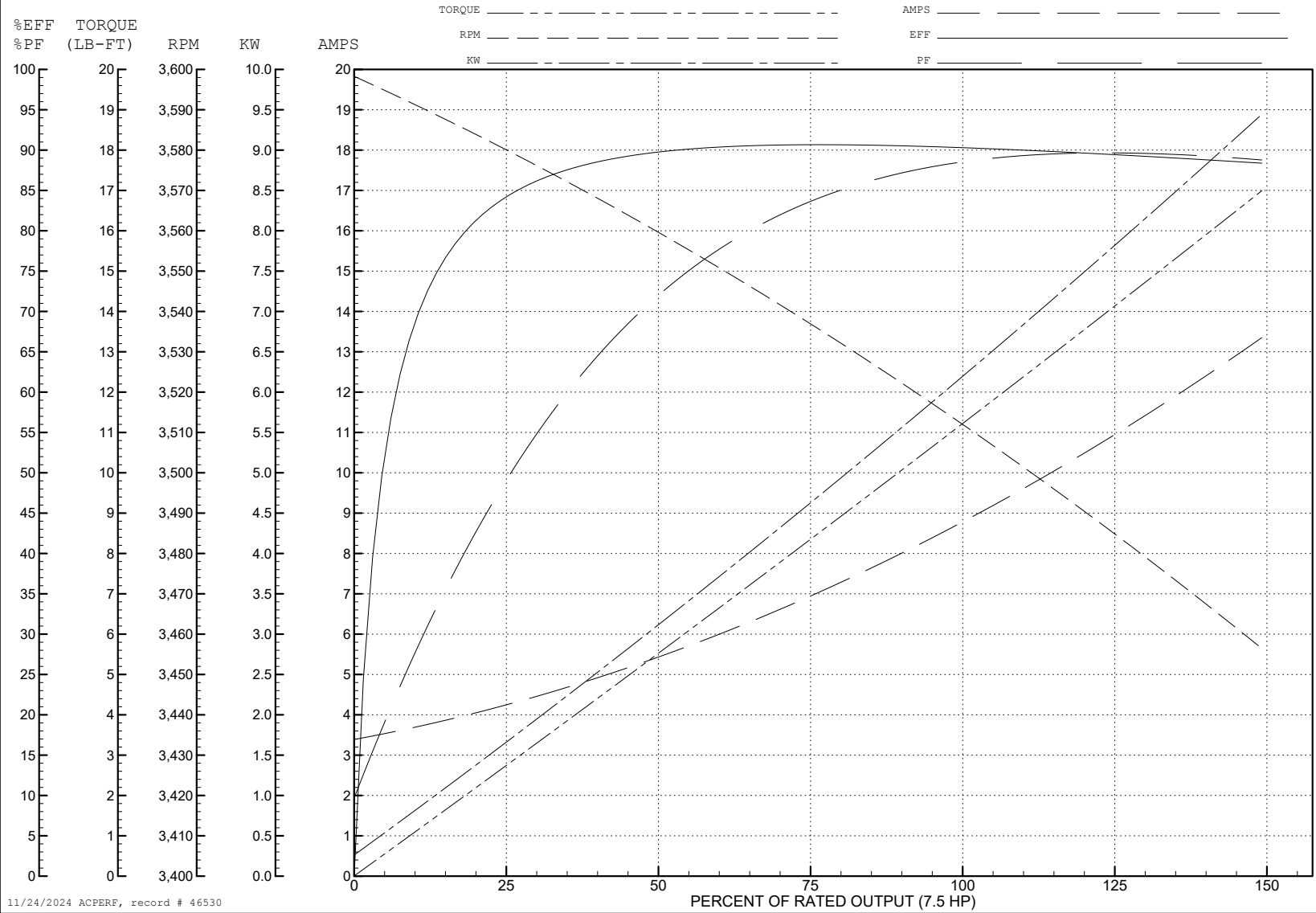
ABB Motors and Mechanical Inc.

WINDING # 07WGY328

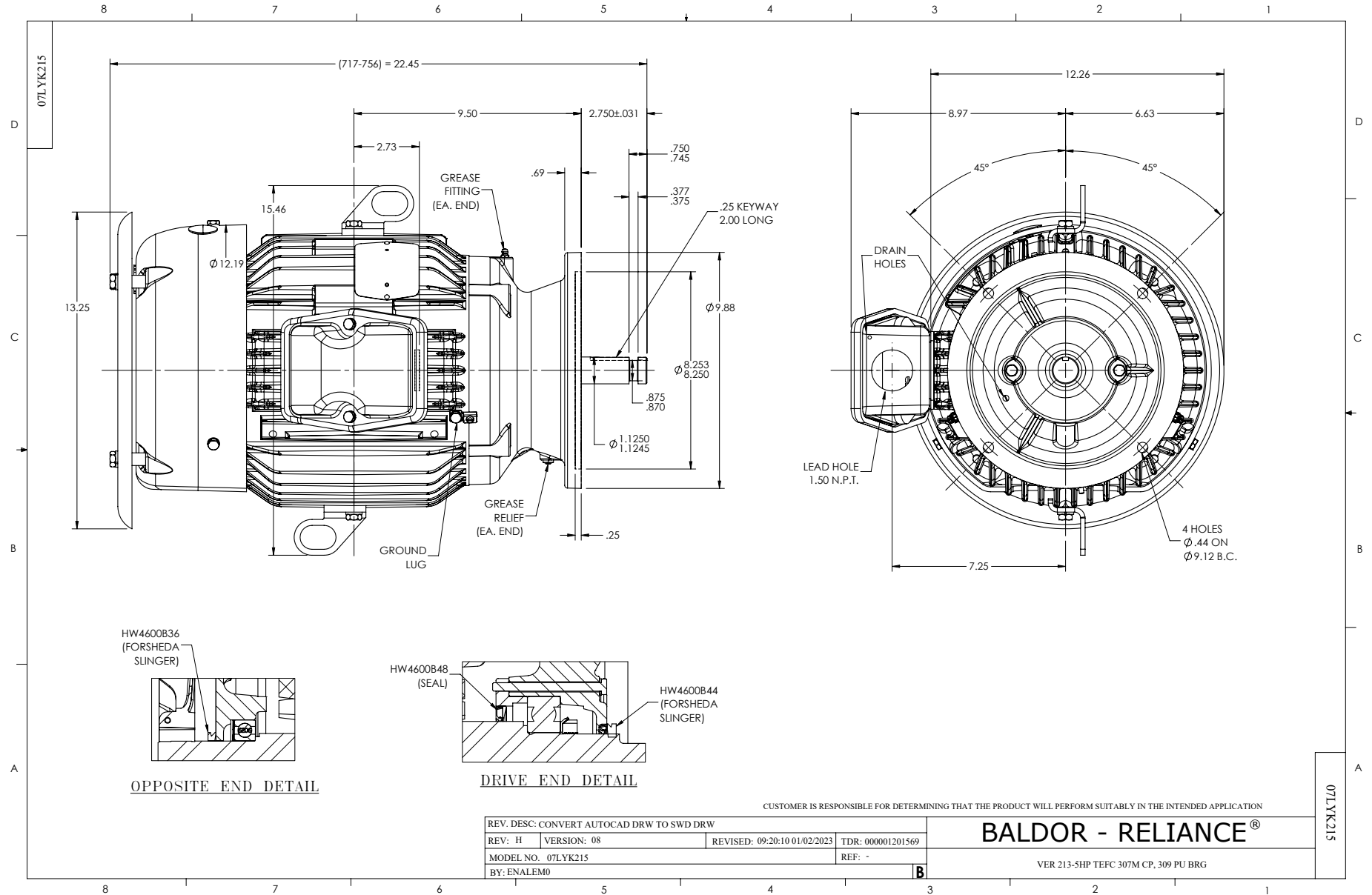
7.5 HP 3 PH 60 HZ 3510 RPM 460 V 0726M

Typical performance - not guaranteed values.

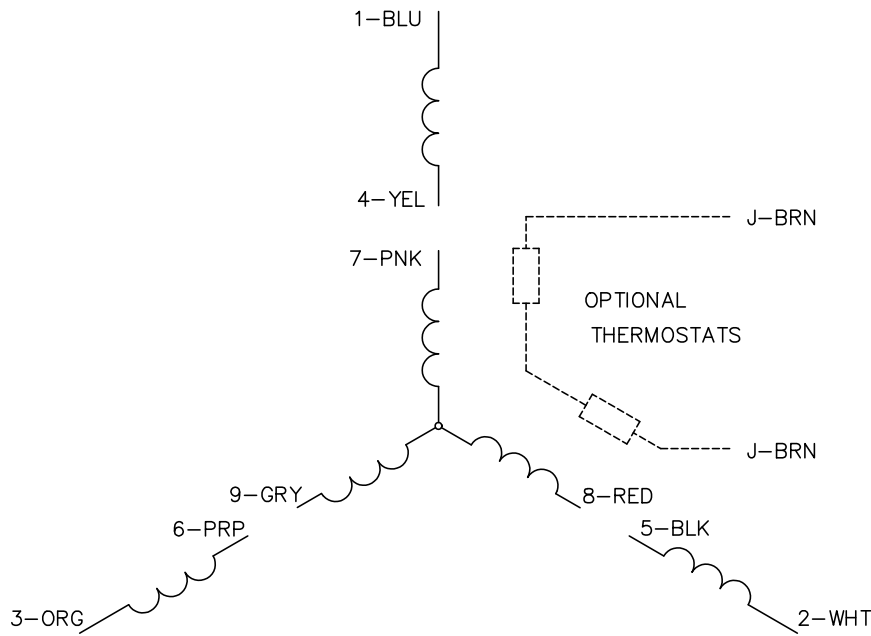
TORQUES (LB-FT): PO=38.8 PU=20.4 LR=23.5 LRA=61.1



11/24/2024 ACPERF, record # 46530



CD0005



LOW VOLTAGE
(2Y)



LINE

HIGH VOLTAGE
(1Y)



LINE

NOTES:

1. INTERCHANGE ANY TWO LINE LEADS TO REVERSE ROTATION.
2. OPTIONAL THERMOSTATS ARE PROVIDED WHEN SPECIFIED.
3. ACTUAL NUMBER OF INTERNAL PARALLEL CIRCUITS MAY BE A MULTIPLE OF THOSE SHOWN ABOVE.
4. LEAD COLORS ARE OPTIONAL. LEADS MUST ALWAYS BE NUMBERED AS SHOWN.

CD0005

REV. DESC: REVISE TO SHOW OPTIONAL COLORS			
REV. LTR: E	BY: JLP	REVISED: 01/19/99 10:15	TDR: 0171435
S00000		FILE: AAA00005140	MDL: -
		MTL: -	

BALDOR ELECTRIC Co.

3PH, DV, 9 LEADS