

**BALDOR • RELIANCE**

---

# Customer information packet

## VHECP3774T

10HP, 1760RPM, 3PH, 60HZ, 215HP, 0748M, TEFC

Class - None

Division - Not Applicable

Copyright © All product information within this document is subject to ABB Motors and Mechanical Inc. copyright © protection, unless otherwise noted.

11/24/2024 10:40:27 AM

## Specifications

Enclosure	TEFC
Frame	215HP
Frame Material	Iron
Frequency	60.00 Hz
Haz Area Class and Group	None
Haz Area Division	Not Applicable
Motor Letter Type	Three Phase
Output @ Frequency	10.000 HP @ 60 HZ
Phase	3
Synchronous Speed @ Frequency	1800 RPM @ 60 HZ
Voltage @ Frequency	460.0 V @ 60 HZ 230.0 V @ 60 HZ
Agency Approvals	CSA CSA EEV UR
Ambient Temperature	40 °C
Auxillary Box	No Auxillary Box
Auxillary Box Lead Termination	None
Base Indicator	No Mounting
Bearing Grease Type	Polyrex EM (-20F +300F)
Blower	None
Current @ Voltage	25.000 A @ 230.0 V 26.300 A @ 208.0 V 12.500 A @ 460.0 V
Design Code	A
Drip Cover	Drip Cover
Duty Rating	CONT
Efficiency @ 100% Load	92.4 %
Electrically Isolated Bearing	Not Electrically Isolated
Feedback Device	NO FEEDBACK
Front Face Code	Drip Cover Mounting
Front Shaft Indicator	None

## Part detail

Revision	AB
Type	AC
Mech. spec.	07K215
Base	
Status	PRD/A
Elec. spec.	07WGX776
Layout	07LYK215
Eff. date	07-25-2024
CD Diagram	CD0005
Poles	04
Leads	9#14 Y
Proprietary	False
Created date	01-01-0001

Heater Indicator	No Heater
High Voltage Full Load Amps	12.5 a
Insulation Class	F
Inverter Code	Inverter Ready
KVA Code	H
Lifting Lugs	Vertical Lifting Lugs
Locked Bearing Indicator	Locked Bearing
Motor Lead Exit	Ko Box
Motor Lead Quantity/Wire Size	9 @ 14 AWG
Motor Lead Termination	Flying Leads
Motor Standards	NEMA
Motor Type	0748M
Mounting Arrangement	F1
Number of Poles	4
Overall Length	22.51 IN
Power Factor	82
Product Family	Chemical Processing (Not DC)
Pulley End Bearing Type	Ball
Pulley Face Code	P-Base
Pulley Shaft Indicator	Standard
Rodent Screen	None
Service Factor	1.15
Shaft Diameter	1.125 IN
Shaft Extension Location	Pulley End
Shaft Ground Indicator	No Shaft Grounding
Shaft Rotation	Reversible
Shaft Slinger Indicator	No Slinger
Speed	1760 rpm
Speed Code	Single Speed
Starting Method	Direct on line
Thermal Device - Bearing	None
Thermal Device - Winding	None
Vibration Sensor Indicator	No Vibration Sensor
Winding Thermal 1	None

**Winding Thermal 2**

**None**

---

**Nameplate**

---

<b>NP1260</b>									
<b>CAT.NO.</b>	VHECP3774T								
<b>SPEC.</b>	07K215X776								
<b>HP</b>	10								
<b>VOLTS</b>	230/460								
<b>AMP</b>	25/12.5								
<b>RPM</b>	1760								
<b>FRAME</b>	215HP	<b>HZ</b>	60	<b>PH</b>	3				
<b>SER.F.</b>	1.15	<b>CODE</b>	H	<b>DES</b>	A	<b>CL</b>	F		
<b>NEMA-NOM-EFF</b>	92.4	<b>PF</b>	82						
<b>RATING</b>	40C AMB-CONT								
<b>CC</b>	010A								
<b>DE</b>	6309	<b>ODE</b>	6206						
<b>ENCL</b>	TEFC	<b>SN</b>							

---

## Parts list

Part number	Description	Quantity
SA126232	SA 07K215X776	1.000 ea
RA116548	RA 07K215X776	1.000 ea
37FN3002C01	EXFN, PLASTIC, 6.00 OD, 1.155 ID	1.000 ea
HA6283A01	SP'L EYE BOLT BRACKET FOR 306 & 307 MTRS	2.000 ea
10XN3816K12	3/8-16 X 3/4 HEX HD CAP GRADE 5	2.000 ea
HW1001A38	LOCKWASHER 3/8, ZINC PLT .688 OD, .382 I	2.000 ea
HW4600B36SP	V-RING SLINGER 1.188 X 1.690 X .24 VITON	1.000 ea
10XN2520A06	1/4 20X3/8 HX HD CAP	2.000 ea
HW4600B44	V-RING SLINGER 1.500 X 1.810 X .28 VITON	1.000 ea
HW1001A25	LOCKWASHER 1/4, ZINC PLT .493 OD, .255 I	2.000 ea
WD1000B16	T&B CX70TN OR L70P TERMINAL LUG	1.000 ea
09CB1001A26G	CONDUIT BOX, MACH W/GRAY EPOXY, W/1.50 N	1.000 ea
RM1017	LEAD SEPERATOR GASKET MODEL 307 1/8" THK	1.000 ea
19XW2520A16	SCREW,1/4-20X1 TAPTITE-II OR ROLOC 91	4.000 ea
11XW1032G06	10-32 X .38, TAPTITE II, HEX WSHR SLTD U	1.000 ea
HW1001A10	WASHER, #10 SPLT LK, ZN X	1.000 ea
WD1000B17	T&B CX35TN OR L35P TERMINAL LUG	1.000 ea
37EP1100B16G	FR EP 37L TEFC W/GRSR-RELIEF, NO DRAIN (	1.000 ea
HW4500A32	FIT./EXT 1698-B (ALEMITE)GREASE FITTING	1.000 ea
HW4500A17	317400 ALEMITE GREASE RELIEF	1.000 ea
HW5100A06	W2420-025 WVY WSHR (WB)	1.000 ea
37EP1504A12G	PULLEY 213-5LP 254LP ENCL 309 BRG W/ SEA	1.000 ea
HW4600B53	SEAL 1.688 X 2.275 X 0.312 SINGLE LIP DB	1.000 ea
HW4500A01	1641B(ALEMITE)400 UNIV, GREASE FITT	1.000 ea
HW4500A17	317400 ALEMITE GREASE RELIEF	1.000 ea
10XN2520A52	1/4-20X 3 .25 HEX HD CAP ZN	2.000 ea
HW1001A25	LOCKWASHER 1/4, ZINC PLT .493 OD, .255 I	2.000 ea
51XB1214A20	12-14X1.25 HXWSSLD SERTYB	1.000 ea
07FH1001A06G	307 FH FOR MTG TO FR E.P. W/GREASER & DR	1.000 ea
10XN2520A24	1/4-20X 1 1/2 HEX HD X	3.000 ea
WD4100A02	DP-1000 HEYCO PLUG OR 62MP1000 MICRO PL	1.000 ea

HW1001A25	LOCKWASHER 1/4, ZINC PLT .493 OD, .255 I	3.000 ea
40FH2500A04G	P'L DRIP COVER MODEL 40- OPEN MACH, GRA	1.000 ea
HA2086A03	.375 X 1.0 HVY-FT SPACER SPIRAL # 62434	4.000 ea
10XN3816A32	3/8-16 X 2 HEX HD CAP SCREW	4.000 ea
HW1001A38	LOCKWASHER 3/8, ZINC PLT .688 OD, .382 I	4.000 ea
09CB1504A01G	LIPPED CONDUIT BOX LID, MACH GRAY EPOXY	1.000 ea
09GS1001A01	GASKET, BOX LID, 1/8 THICK BLACK NEOPREN	1.000 ea
10XN2520A12	1/4-20 X 3/4 HEX HEAD CAP	2.000 ea
HW1001A25	LOCKWASHER 1/4, ZINC PLT .493 OD, .255 I	2.000 ea
MJ5001A27	32220KN GRAY SEALER *MIN BUY 4 QTS=1GAL	0.001 qt
MJ5001A14	DYNAPRO SEALANT, CP MTR VC#2508050 (603	0.001 ea
85XU0407S04	4X1/4 U DRIVE PIN STAINLESS	2.000 ea
LB1624	COMBINED WARNING LABEL, ISO/ANSI PICTOGR	1.000 ea
HW2501E18	KEY, 1/4 SQ X 2.000	1.000 ea
HA7000A02	KEY RETAINER RING, 1 1/8 DIA, 1 3/8 DIA	1.000 ea
MJ1000A02	GREASE, POLYREX EM EXXON	0.050 lb
HA3104A13	THRUBOLT 5/16-18 X 11.750 OHIO ROD	4.000 ea
MG1025N19	WILKOFASST, 778.50, RELIANCE BLUE-GREEN 8	0.036 ga
LC0005	CONN.DIA.,TY M,9-LD,DUAL VOLT,REVERSING	1.000 ea
LB1002N	LABEL,MARINE DUTY (ON ROLLS)	1.000 ea
NP1260	SS CP SUPER-E, CURUS-E, NEMA PREM, CC	1.000 ea
07PA1097	PKG GRP, 07 CAST IRON 2X4 RISERS PK1181	1.000 ea
07PA1095	PKG GRP, VER 07 CAST IRON	1.000 ea
MN416A01	TAG-INSTAL-MAINT no wire (2500bx)4/22	1.000 ea

**AC Induction Motor Performance Data**

Record # 25097

Typical performance - not guaranteed values

Winding: 07WGX776-R016		Type: 0748M	Enclosure: TEFC	
<b>Nameplate Data</b>			<b>460 V, 60 Hz: High Voltage Connection</b>	
Rated Output (HP)	10	Full Load Torque	29.8 LB-FT	
Volts	230/460	Start Configuration	direct on line	
Full Load Amps	25/12.5	Breakdown Torque	87 LB-FT	
R.P.M.	1760	Pull-up Torque	51.9 LB-FT	
Hz	60 Phase	Locked-rotor Torque	57.5 LB-FT	
NEMA Design Code	A KVA Code	Starting Current	88.5 A	
Service Factor (S.F.)	1.15	No-load Current	5.12 A	
NEMA Nom. Eff.	92.4 Power Factor	Line-line Res. @ 25°C	0.973 Ω	
Rating - Duty	40C AMB-CONT	Temp. Rise @ Rated Load	60°C	
S.F. Amps		Temp. Rise @ S.F. Load	76°C	
		Locked-rotor Power Factor	35	
		Rotor inertia	1.18 LB-FT <sup>2</sup>	

**Load Characteristics 460 V, 60 Hz, 10 HP**

% of Rated Load	25	50	75	100	125	150	S.F.
Power Factor	44	67	78	82	84	85	83
Efficiency	90	92.9	93.1	92.5	91.4	90.1	91.8
Speed	1790	1781	1771	1762	1750	1739	1755
Line amperes	5.84	7.52	9.75	12.3	15.2	18.3	14



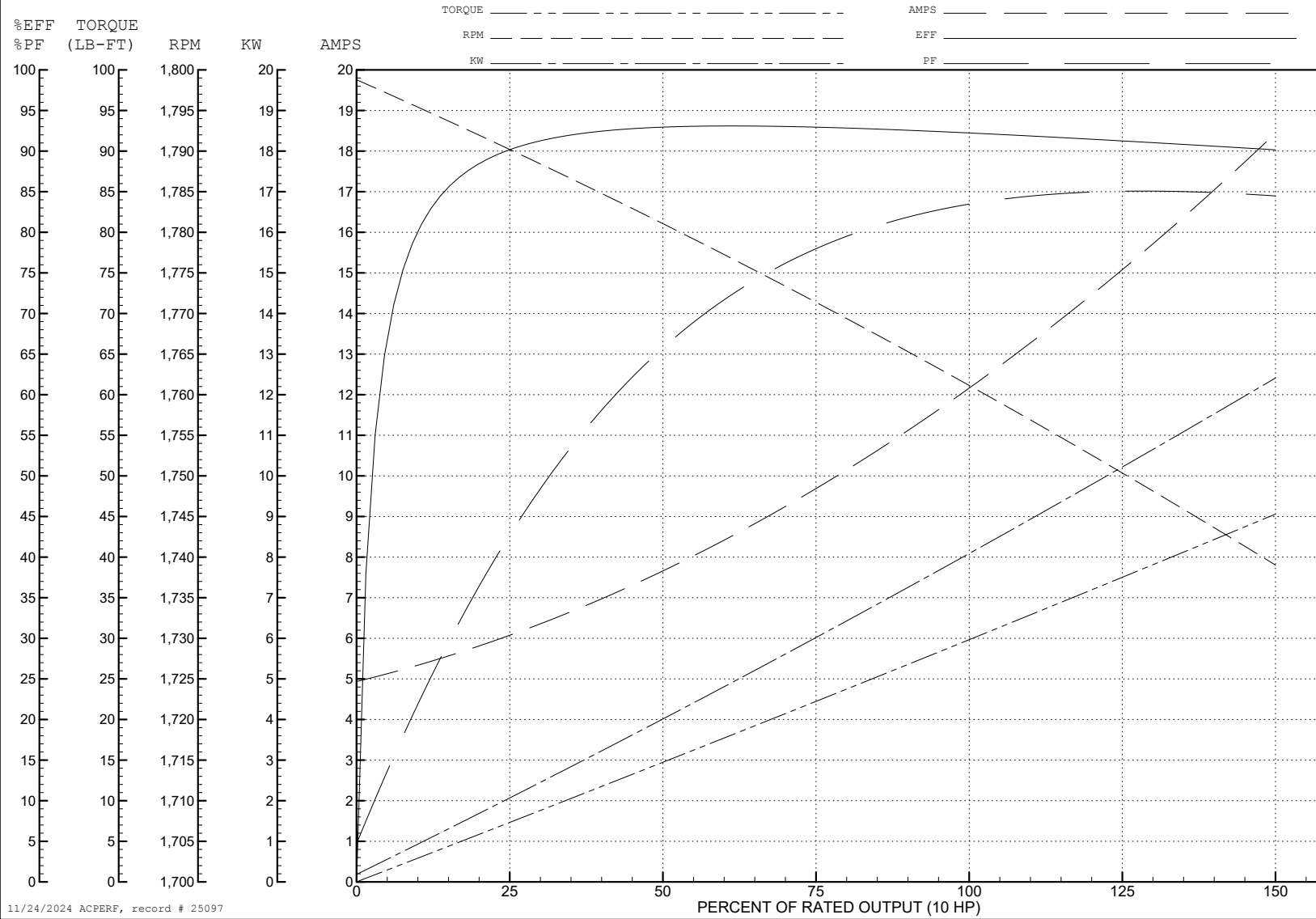
ABB Motors and Mechanical Inc.

WINDING # 07WGX776

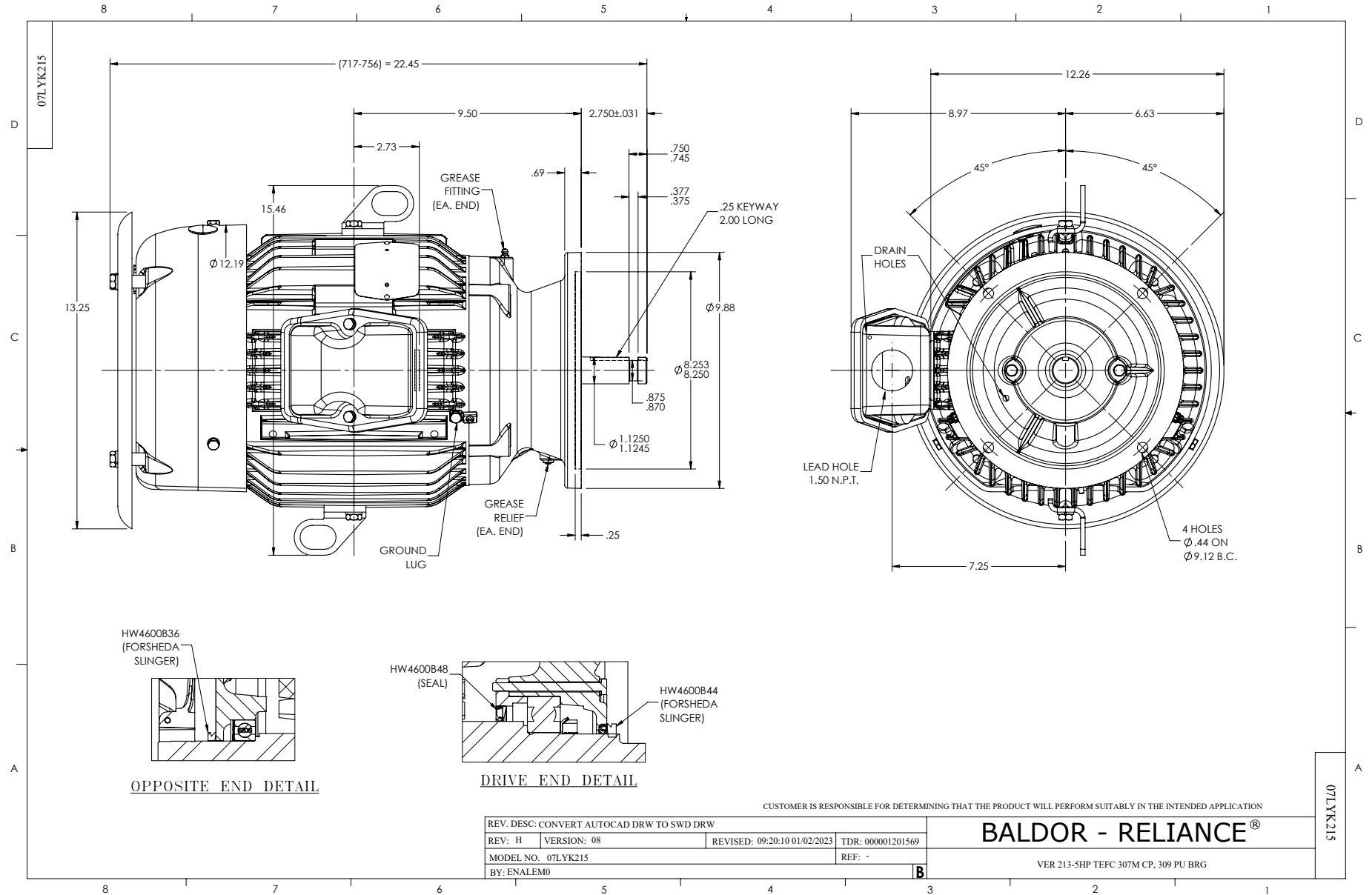
Typical performance - not guaranteed values.

10 HP 3 PH 60 HZ 1760 RPM 460 V 0748M

TORQUES (LB-FT): PO=87 PU=51.9 LR=57.5 LRA=88.5



11/24/2024 ACPERF, record # 25097



CD0005

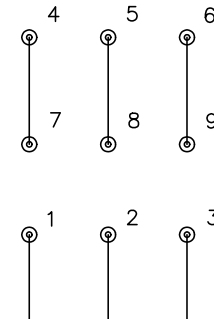


LOW VOLTAGE  
(2Y)



LINE

HIGH VOLTAGE  
(1Y)



LINE

NOTES:

1. INTERCHANGE ANY TWO LINE LEADS TO REVERSE ROTATION.
2. OPTIONAL THERMOSTATS ARE PROVIDED WHEN SPECIFIED.
3. ACTUAL NUMBER OF INTERNAL PARALLEL CIRCUITS MAY BE A MULTIPLE OF THOSE SHOWN ABOVE.
4. LEAD COLORS ARE OPTIONAL. LEADS MUST ALWAYS BE NUMBERED AS SHOWN.

CD0005

REV. DESC: REVISE TO SHOW OPTIONAL COLORS			
REV. LTR: E	BY: JLP	REVISED: 01/19/99 10:15	TDR: 0171435
S00000		FILE: AAA00005140	MDL: -
		MTL: -	

BALDOR ELECTRIC Co.

3PH, DV, 9 LEADS