

**BALDOR • RELIANCE**

---

# Customer information packet

## VHECP4313T

75HP, 3550RPM, 3PH, 60HZ, 365HP, 1464M, TEFC, F

Class - None

Division - Not Applicable

## Specifications

Enclosure	TEFC
Frame	365HP
Frame Material	Iron
Frequency	60.00 Hz
Haz Area Class and Group	None
Haz Area Division	Not Applicable
Motor Letter Type	Three Phase
Output @ Frequency	75.000 HP @ 60 HZ
Phase	3
Synchronous Speed @ Frequency	3600 RPM @ 60 HZ
Voltage @ Frequency	230.0 V @ 60 HZ 460.0 V @ 60 HZ
Agency Approvals	CSA EEV
Ambient Temperature	40 °C
Auxillary Box	No Auxillary Box
Base Indicator	Bracket Mounted
Bearing Grease Type	Polyrex EM (-20F +300F)
Current @ Voltage	161.000 A @ 230.0 V 80.700 A @ 460.0 V
Design Code	B
Drip Cover	Drip Cover
Duty Rating	CONT
Efficiency @ 100% Load	94.5 %
Feedback Device	NO FEEDBACK
Heater Indicator	No Heater
High Voltage Full Load Amps	80.7 a
Insulation Class	F
Inverter Code	Inverter Ready
KVA Code	F
Lifting Lugs	Standard Lifting Lugs
Motor Lead Quantity/Wire Size	3 @ 2 AWG
Motor Standards	NEMA

## Part detail

Revision	H
Type	AC
Mech. spec.	
Base	
Status	PRD/A
Elec. spec.	A36WG0761
Layout	617428-035
Eff. date	03-30-2016
CD Diagram	416820-002
Poles	02
Leads	3#2,6#4
Proprietary	False
Created date	10-19-2010

<b>Motor Type</b>	A36068M
<b>Mounting Arrangement</b>	F1
<b>Number of Poles</b>	2
<b>Overall Length</b>	35.36 IN
<b>Power Factor</b>	92
<b>Pulley End Bearing Type</b>	Ball
<b>Pulley Face Code</b>	P-Base
<b>Service Factor</b>	1.15
<b>Shaft Ground Indicator</b>	No Shaft Grounding
<b>Shaft Rotation</b>	Reversible
<b>Shaft Slinger Indicator</b>	Shaft Slinger
<b>Speed</b>	3555 rpm
<b>Speed Code</b>	Single Speed
<b>Starting Method</b>	Direct on line
<b>Thermal Device - Bearing</b>	None
<b>Thermal Device - Winding</b>	None

**Nameplate**

**000613007EW**

<b>CAT.NO.</b>	VHECP4313T	<b>SPEC NO.</b>	P36G3417						
<b>HP</b>	75	<b>AMPS</b>	161/80.7	<b>VOLTS</b>	230/460	<b>DESIGN</b>	B		
<b>FRAME</b>	365HP	<b>RPM</b>	3555	<b>HZ</b>	60	<b>AMB</b>	40	<b>SF</b>	1.15
<b>DRIVE END BEARING</b>	65BC03J30X	<b>PH</b>	3	<b>DUTY</b>	CONT	<b>INSUL.CLASS</b>	F		
<b>OPP D.E. BEARING</b>	65BC03J30X	<b>TYPE</b>	P	<b>ENCL</b>	TEFC	<b>CODE</b>	F		
<b>D.E.BRG.DATA</b>	6313	<b>POWER FACTOR</b>	91.5	<b>NEMA NOM EFFICIENCY</b>	94.5				
<b>O.D.E.BRG.DATA</b>	6313	<b>MAX CORR KVAR</b>	05.0	<b>GUARANTEED EFFICIENCY</b>	93.6				
<b>3/4 LOAD EFF.</b>	95.4	<b>NEMA NOM/CSA QUOTED EFF</b>							
<b>SER.NO.</b>		<b>MOTOR WEIGHT</b>	1042						

---

**000901002AAA**

---

SUIT FOR 208V @ 179 AMPS


---

## Parts list

Part number	Description	Quantity
SA207167	SA P36G3417	1.000 ea
RA194434	RA P36G3417	1.000 ea
000613006PU	N/P (RELEASE QTY 10,000) UL CSA LABEL	1.000 ea
000613007EW	N/P BALDOR	1.000 ea
000692000FF	N/P	1.000 ea
000692000VD	LABEL WARNING	1.000 ea
000901002AAA	N/P BLANK (RELEASE QTY 1,500)	1.000 ea
421948032	LABEL, MYLAR	1.000 ea
004824015A	GREASE POLYREX EM	0.544 lb
032018008AK	HHCS 1/4-20X1 PLATED	4.000 ea
032018012DK	HHCS 1/2-13X1-1/2 PLTD. 032018012DR	4.000 ea
032018030CK	HHCS 3/8-16X3-3/4 PLATED	3.000 ea
032018024CK	HHCS 3/8-16X3 PLTD.	3.000 ea
034180012DA	KEY 1X4X1/4X1-1/2 L	1.000 ea
034530052AB	P/NIP 1/8X6-1/2 Zinc	1.000 ea
034690002AB	PPLG 1/4" PLTD.	1.000 ea
047174002D	EXT SNAP RING(360-440)	1.000 ea
078559042AE	F/C 360 078559001A	1.000 ea
085922073B	BRKT 360 085922072WCC KB	1.000 ea
415045002E	SLGR	1.000 ea
415072001B	CLAMP	1.000 ea
415096002A	CPLG 1/8 HEX TYPE	1.000 ea
412118006A	DRAIN	1.000 ea
032018010CK	HHCS 3/8-16X1-1/4 PLTD. 032018010CR	4.000 ea
032018022CK	HHCS 3/8-16X2-3/4 PLTD	4.000 ea
702675001C	FAN 360	1.000 ea
032018012DK	HHCS 1/2-13X1-1/2 PLTD. 032018012DR	4.000 ea
034690002AB	PPLG 1/4" PLTD.	1.000 ea
089495002A	BRKT 360 089495001WCA	1.000 ea
410700004F	WSHR	1.000 ea
415045002E	SLGR	1.000 ea

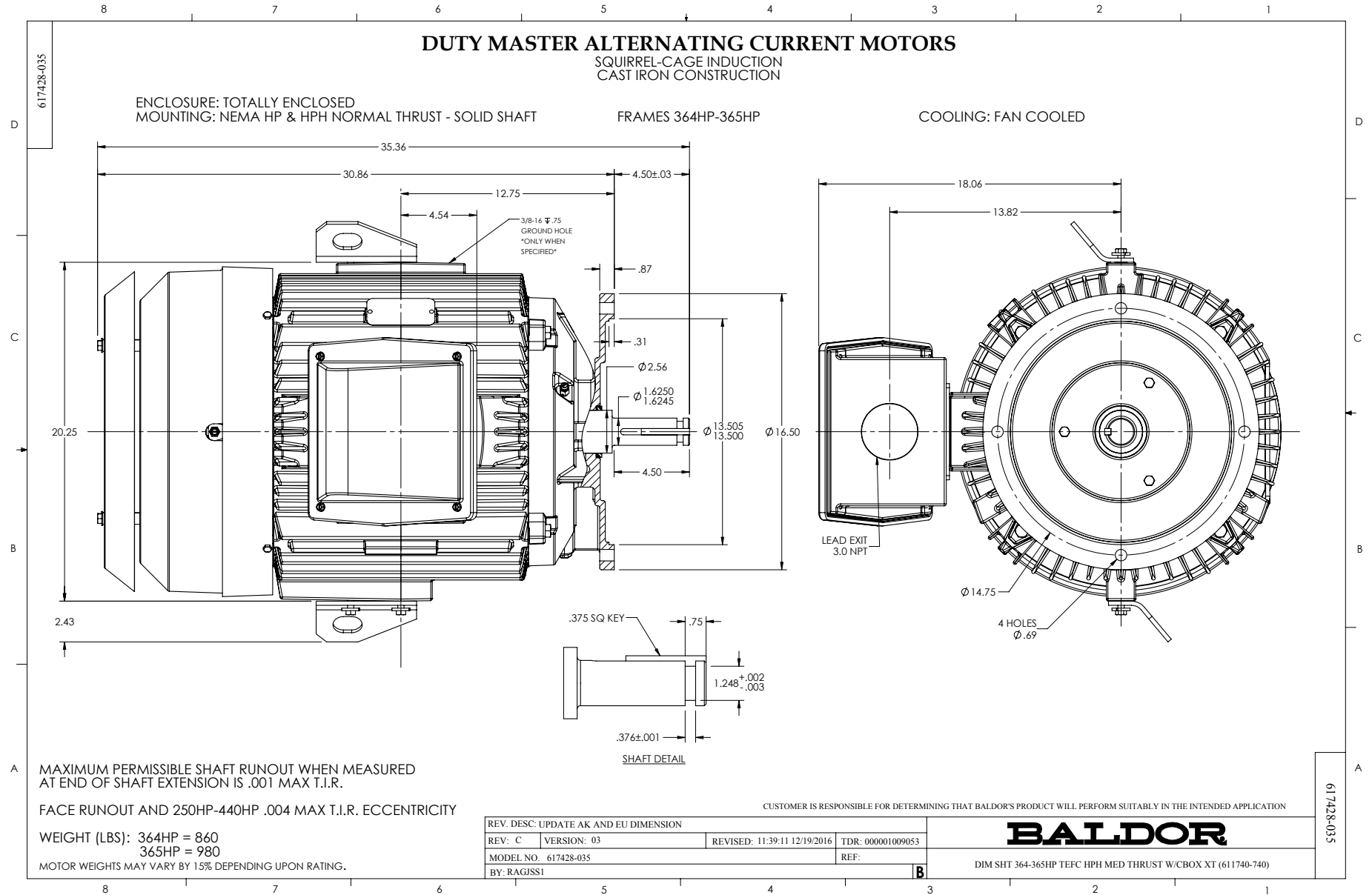
412118006A	DRAIN	1.000 ea
033512008LB	HHTTS 1/4-20X1 PLATED	4.000 ea
034000014AB	WSH ID.406 OD.812 TH.065	4.000 ea
034017014AB	LCKW 3/8 STD. PLATED	4.000 ea
035000001A	ALFTG 1/8" 1610-BL	1.000 ea
035000001A	ALFTG 1/8" 1610-BL	1.000 ea
048977006B	GRFTG - XP	1.000 ea
065776000C	GASKET,MAIN CBOX, 320-400	1.000 ea
067053000B	GASK 320-400	1.000 ea
076708000BB	CONDUIT BOX-360	1.000 ea
076709000A	C/B Cover - 360	1.000 ea
405851012AN	SPACE	4.000 ea
415000115H	T/LUG #2AWG-4/0AWG	1.000 ea
418150003A	GREASE FITTING CAP	1.000 ea
418150003A	GREASE FITTING CAP	1.000 ea
702641041A	D/CVR 360 SUB PAINT	1.000 ea
032018012EK	HHCS 5/8-11X1-1/2L PLTD.	4.000 ea
033775004EA	DRSCR #6-1/4 304 S.S.	4.000 ea
034017018AB	5/8 MED LOCK WASHER ZP (034017018AF)	4.000 ea
034000014AB	WSH ID.406 OD.812 TH.065	4.000 ea
034180024FA	KEY 3/8X3/8X3 L	1.000 ea
609013011C	LFT/P - 360	2.000 ea
14PA1000	PACKAGING 314 GROUP COMBINED PRINT	1.000 ea
MG1025N19	WILKO 778.50 BLUE GREEN - 55 GAL DRUMS	0.250 ga
032018005DL	1/2-13 X 5/8 SILICON BRONZE HHCS	1.000 ea





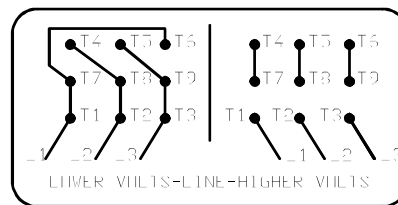
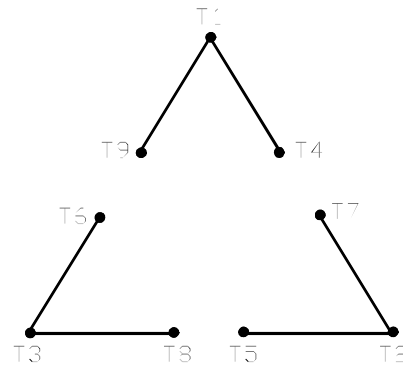






416820-002

A-C MOTOR  
 CONNECTION DIAGRAM  
 STANDARD 9 LEAD DELTA-CONNECTED



(N.P. 1575-B)

416820-002

REV. DESC: FONT CHANGE FOR PDF SEARCHABLE		
REV. LTR: A	VERSION: 01	TDR: 000001009382
FILE: \MGA\00000\661	REVISED: 02:46:19 02/13/2020	BY: MGHMTT
MTL: -	© □	

**BALDOR - RELIANCE®**

CONN DIAG - STANDARD 9 LEAD, DELTA-CONNECTED

SH 1 of 1