

BALDOR • RELIANCE

Customer information packet

VHECP4314T

60HP, 1780RPM, 3PH, 60HZ, 364HP, 1462M, TEFC

Class - None

Division - Not Applicable

Copyright © All product information within this document is subject to ABB Motors and Mechanical Inc. copyright © protection, unless otherwise noted.

11/24/2024 11:45:55 AM

Specifications

Enclosure	TEFC
Frame	364HP
Frame Material	Iron
Frequency	60.00 Hz
Haz Area Class and Group	None
Haz Area Division	Not Applicable
Motor Letter Type	Three Phase
Output @ Frequency	60.000 HP @ 60 HZ
Phase	3
Synchronous Speed @ Frequency	1800 RPM @ 60 HZ
Voltage @ Frequency	230.0 V @ 60 HZ 460.0 V @ 60 HZ
Agency Approvals	CSA EEV
Ambient Temperature	40 °C
Auxillary Box	No Auxillary Box
Base Indicator	Bracket Mounted
Bearing Grease Type	Polyrex EM (-20F +300F)
Current @ Voltage	136.000 A @ 230.0 V 68.000 A @ 460.0 V
Design Code	B
Drip Cover	Drip Cover
Duty Rating	CONT
Efficiency @ 100% Load	95.0 %
Feedback Device	NO FEEDBACK
Heater Indicator	No Heater
High Voltage Full Load Amps	68.0 a
Insulation Class	F
Inverter Code	Inverter Ready
KVA Code	G
Lifting Lugs	Standard Lifting Lugs
Motor Lead Quantity/Wire Size	3 @ 4 AWG
Motor Standards	NEMA

Part detail

Revision	G
Type	AC
Mech. spec.	
Base	
Status	PRD/A
Elec. spec.	A36WG0765
Layout	617428-035
Eff. date	03-30-2016
CD Diagram	416820-002
Poles	04
Leads	3#4,6#6
Proprietary	False
Created date	10-19-2010

Motor Type	A36062M
Mounting Arrangement	F1
Number of Poles	4
Overall Length	35.36 IN
Power Factor	87
Pulley End Bearing Type	Ball
Pulley Face Code	P-Base
Service Factor	1.15
Shaft Ground Indicator	No Shaft Grounding
Shaft Rotation	Reversible
Shaft Slinger Indicator	Shaft Slinger
Speed	1780 rpm
Speed Code	Single Speed
Starting Method	Direct on line
Thermal Device - Bearing	None
Thermal Device - Winding	None

Nameplate

000613007EW

CAT.NO.	VHECP4314T	SPEC NO.	P36G3421						
HP	60	AMPS	136/68	VOLTS	230/460	DESIGN	B		
FRAME	364HP	RPM	1780	HZ	60	AMB	40	SF	1.15
DRIVE END BEARING	65BC03J30X	PH	3	DUTY	CONT	INSUL.CLASS	F		
OPP D.E. BEARING	65BC03J30X	TYPE	P	ENCL	TEFC	CODE	G		
D.E.BRG.DATA	6313	POWER FACTOR	87	NEMA NOM EFFICIENCY	95				
O.D.E.BRG.DATA	6313	MAX CORR KVAR	10.0	GUARANTEED EFFICIENCY	94.5				
3/4 LOAD EFF.	95.3	NEMA NOM/CSA QUOTED EFF							
SER.NO.		MOTOR WEIGHT	969						

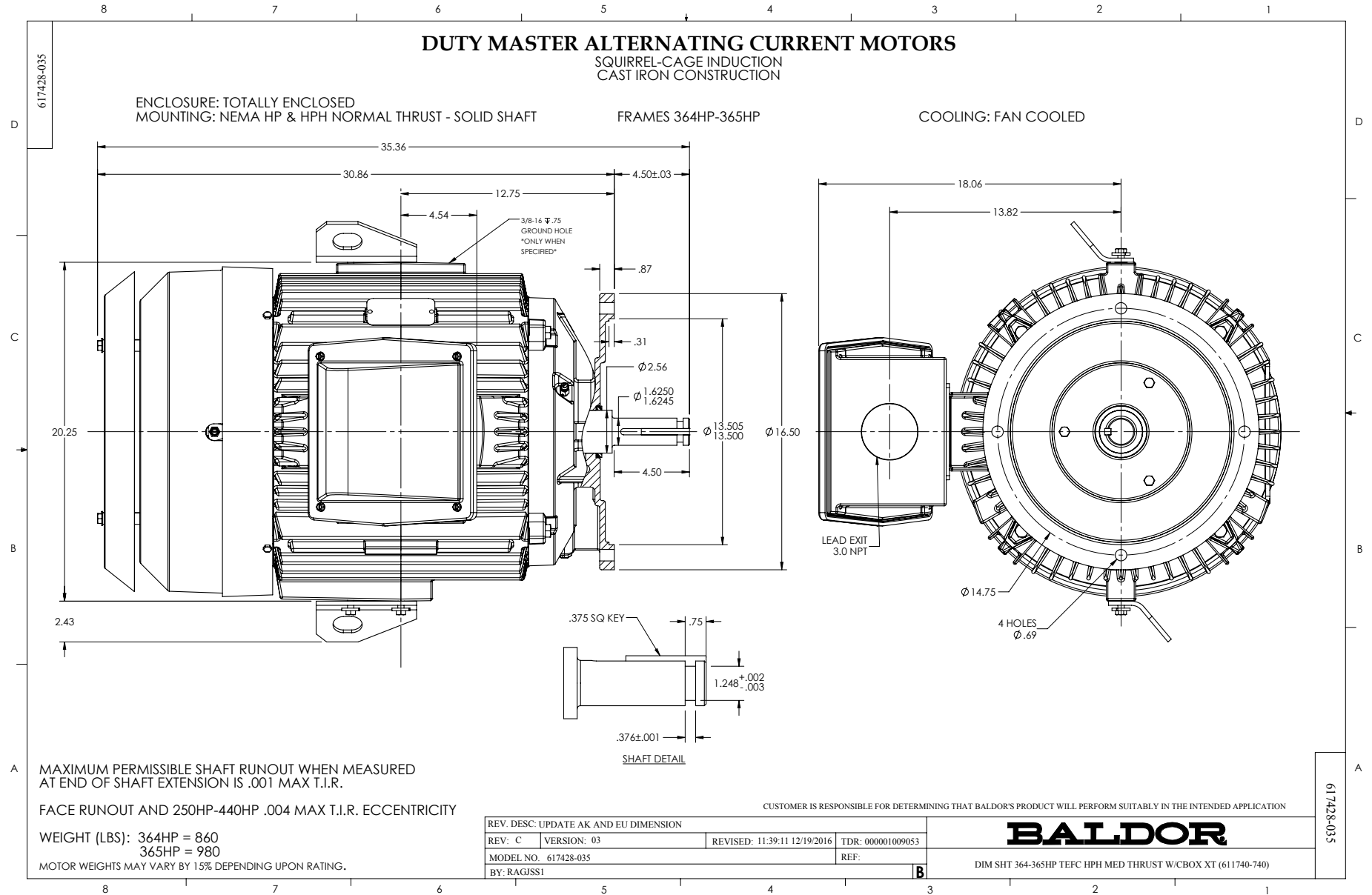
000901002AAA

SUIT FOR 208 V @ 149 AMPS

Parts list

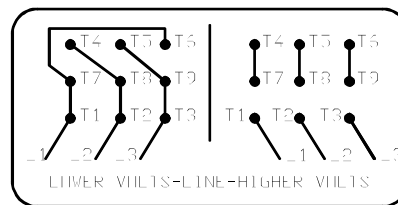
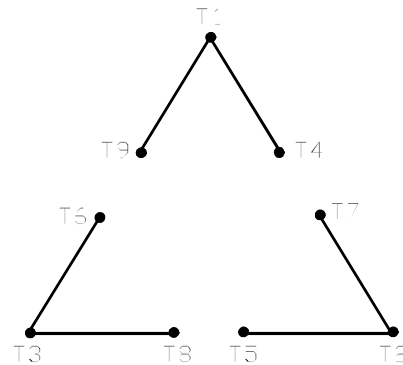
Part number	Description	Quantity
SA206545	SA P36G3421	1.000 ea
RA193812	RA P36G3421	1.000 ea
000613006PU	N/P (RELEASE QTY 10,000) UL CSA LABEL	1.000 ea
000613007EW	N/P BALDOR	1.000 ea
000692000FF	N/P	1.000 ea
000692000VD	LABEL WARNING	1.000 ea
000901002AAA	N/P BLANK (RELEASE QTY 1,500)	1.000 ea
421948032	LABEL, MYLAR	1.000 ea
004824015A	GREASE POLYREX EM	0.544 lb
032018008AK	HHCS 1/4-20X1 PLATED	4.000 ea
032018012DK	HHCS 1/2-13X1-1/2 PLTD. 032018012DR	4.000 ea
032018030CK	HHCS 3/8-16X3-3/4 PLATED	3.000 ea
032018024CK	HHCS 3/8-16X3 PLTD.	3.000 ea
034180012DA	KEY 1X4X1/4X1-1/2 L	1.000 ea
034530052AB	P/NIP 1/8X6-1/2 Zinc	1.000 ea
034690002AB	PPLG 1/4" PLTD.	1.000 ea
047174002D	EXT SNAP RING(360-440)	1.000 ea
078548001K	FAN KB 100/30 (70) 360	1.000 ea
078559042AE	F/C 360 078559001A	1.000 ea
085922073B	BRKT 360 085922072WCC KB	1.000 ea
415045002E	SLGR	1.000 ea
415072001B	CLAMP	1.000 ea
415096002A	CPLG 1/8 HEX TYPE	1.000 ea
412118006A	DRAIN	1.000 ea
032018010CK	HHCS 3/8-16X1-1/4 PLTD. 032018010CR	4.000 ea
032018022CK	HHCS 3/8-16X2-3/4 PLTD	4.000 ea
032018012DK	HHCS 1/2-13X1-1/2 PLTD. 032018012DR	4.000 ea
034690002AB	PPLG 1/4" PLTD.	1.000 ea
089495002B	BRKT 360 089495001WCA-FINISHED TURN	1.000 ea
415045002E	SLGR	1.000 ea
412118006A	DRAIN	1.000 ea

033512008LB	HHTTS 1/4-20X1 PLATED	4.000 ea
034000014AB	WSH ID.406 OD.812 TH.065	4.000 ea
034017014AB	LCKW 3/8 STD. PLATED	4.000 ea
035000001A	ALFTG 1/8" 1610-BL	1.000 ea
035000001A	ALFTG 1/8" 1610-BL	1.000 ea
048977006B	GRFTG - XP	1.000 ea
065776000C	GASKET,MAIN CBOX, 320-400	1.000 ea
067053000B	GASK 320-400	1.000 ea
076708000BB	CONDUIT BOX-360	1.000 ea
076709000A	C/B Cover - 360	1.000 ea
405851012AN	SPACE	4.000 ea
415000115H	T/LUG #2AWG-4/0AWG	1.000 ea
418150003A	GREASE FITTING CAP	1.000 ea
418150003A	GREASE FITTING CAP	1.000 ea
702641041A	D/CVR 360 SUB PAINT	1.000 ea
032018012EK	HHCS 5/8-11X1-1/2L PLTD.	4.000 ea
033775004EA	DRSCR #6-1/4 304 S.S.	4.000 ea
034017018AB	5/8 MED LOCK WASHER ZP (034017018AF)	4.000 ea
034000014AB	WSH ID.406 OD.812 TH.065	4.000 ea
410700004F	WSHR	1.000 ea
034180024FA	KEY 3/8X3/8X3 L	1.000 ea
609013011C	LFT/P - 360	2.000 ea
14PA1000	PACKAGING 314 GROUP COMBINED PRINT	1.000 ea
MG1025N19	WILKO 778.50 BLUE GREEN - 55 GAL DRUMS	0.250 ga
032018005DL	1/2-13 X 5/8 SILICON BRONZE HHCS	1.000 ea



416820-002

A-C MOTOR
 CONNECTION DIAGRAM
 STANDARD 9 LEAD DELTA-CONNECTED



(N.P. 1575-B)

416820-002

REV. DESC: FONT CHANGE FOR PDF SEARCHABLE		
REV. LTR: A	VERSION: 01	TDR: 000001009382
FILE: \MGA\00000\661	REVISED: 02:46:19 02/13/2020	BY: MGHMTT
MTL: -	© □	

BALDOR - RELIANCE®

CONN DIAG - STANDARD 9 LEAD, DELTA-CONNECTED

SH 1 of 1