

BALDOR • RELIANCE

Customer information packet

VHEM3311T

7.5HP, 1770RPM, 3PH, 60HZ, 213HP, 0740M, ODP, F

Class - None

Division - Not Applicable

Specifications

Enclosure	ODP
Frame	213HP
Frame Material	Iron
Frequency	60.00 Hz
Haz Area Class and Group	None
Haz Area Division	Not Applicable
Motor Letter Type	Three Phase
Output @ Frequency	7.500 HP @ 60 HZ
Phase	3
Synchronous Speed @ Frequency	1800 RPM @ 60 HZ
Voltage @ Frequency	460.0 V @ 60 HZ 230.0 V @ 60 HZ
Agency Approvals	CSA CSA EEV UR
Ambient Temperature	40 °C
Auxillary Box	No Auxillary Box
Auxillary Box Lead Termination	None
Base Indicator	No Mounting
Bearing Grease Type	Polyrex EM (-20F +300F)
Blower	None
Current @ Voltage	20.400 A @ 208.0 V 23.200 A @ 230.0 V 11.600 A @ 460.0 V
Design Code	A
Drip Cover	Drip Cover
Duty Rating	CONT
Efficiency @ 100% Load	91.0 %
Electrically Isolated Bearing	Not Electrically Isolated
Feedback Device	NO FEEDBACK
Front Face Code	Standard
Front Shaft Indicator	None

Part detail

Revision	C
Type	AC
Mech. spec.	07K236
Base	
Status	NLA/A
Elec. spec.	07WGR866
Layout	07LYK236
Eff. date	03-02-2022
CD Diagram	CD0005
Poles	04
Leads	9#14
Proprietary	False
Created date	04-27-2016

Heater Indicator	No Heater
High Voltage Full Load Amps	11.6 a
Insulation Class	F
Inverter Code	Inverter Ready
KVA Code	N
Lifting Lugs	Vertical Lifting Lugs
Locked Bearing Indicator	Locked Bearing
Motor Lead Exit	Ko Box
Motor Lead Quantity/Wire Size	9 @ 14 AWG
Motor Lead Termination	Flying Leads
Motor Standards	NEMA
Motor Type	0740M
Mounting Arrangement	F1
Number of Poles	4
Overall Length	22.94 IN
Power Factor	66
Product Family	General Purpose
Pulley End Bearing Type	Ball
Pulley Face Code	P-Base
Pulley Shaft Indicator	P-Base Groove & Key
Rodent Screen	None
RoHS Status	ROHS COMPLIANT
Service Factor	1.15
Shaft Diameter	1.125 IN
Shaft Extension Location	Pulley End
Shaft Ground Indicator	No Shaft Grounding
Shaft Rotation	Reversible
Shaft Slinger Indicator	Shaft Slinger
Speed	1770 rpm
Speed Code	Single Speed
Starting Method	Direct on line
Thermal Device - Bearing	None
Thermal Device - Winding	None
Vibration Sensor Indicator	No Vibration Sensor

Winding Thermal 1

None

Winding Thermal 2

None

Nameplate

NP1259L									
CAT.NO.	VHEM3311T								
SPEC.	07K236R866G1								
HP	7.5								
VOLTS	230/460								
AMP	23.2/11.6								
RPM	1770								
FRAME	213HP	HZ	60	PH	3				
SER.F.	1.15	CODE	N	DES	A	CL	F		
NEMA-NOM-EFF	91	PF	66						
RATING	40C AMB-CONT								
CC	010A								
DE	6309	ODE	6206						
ENCL	ODP	SN							

Parts list

Part number	Description	Quantity
SA319471	SA 07K236R866G1	1.000 ea
RA307167	RA 07K236R866G1	1.000 ea
HW3201A05	3/8-16 EYEBOLT	1.000 ea
09CB3002SP	CB W/1.38 LEAD HOLE FOR 37, 39, 307 & 30	1.000 ea
09GS1000	GASKET-CONDUIT BOX, 1/16 THICK LEXIDE	1.000 ea
10XN2520A12	1/4-20 X 3/4 HEX HEAD CAP	4.000 ea
HW1001A25	LOCKWASHER 1/4, ZINC PLT .493 OD, .255 I	4.000 ea
10XN2520G06	1/4 20X3/8 HX HD CAP, GREEN	1.000 ea
HW1001A25	LOCKWASHER 1/4, ZINC PLT .493 OD, .255 I	1.000 ea
WD1000B16	T&B CX70TN OR L70P TERMINAL LUG	1.000 ea
07EP1200A01	FRONT END PLATE,MACH	1.000 ea
07AD2000	AIR DEFLECTOR, 307 OPEN P-BASE	1.000 ea
51XT0832A08	8-32 X 1/2 TY23 HXWS SLDSR	3.000 ea
HW1001A08	WASHER, #8 SPLT LK, ZN	3.000 ea
10XN3816A60	3/8-16 X 3-3/4 HEX HD CAPSCREW, GRADE 2,Z	2.000 ea
HW1001A38	LOCKWASHER 3/8, ZINC PLT .688 OD, .382 I	2.000 ea
09CB3501SP	CONDUIT BOX LID FOR 09CB3001 & 09CB3002	1.000 ea
HW4500A03	GREASE FITTING, .125 NPT 1610(ALEMITE) 8	1.000 ea
HW4500A17	317400 ALEMITE GREASE RELIEF	1.000 ea
HW5100A06	W2420-025 WVY WSHR (WB)	1.000 ea
07EP1505A02	SPL PU E.P. MACH, W/6309 BRG.	1.000 ea
HW4600B53	SEAL 1.688 X 2.275 X 0.312 SINGLE LIP DB	1.000 ea
HW4500A03	GREASE FITTING, .125 NPT 1610(ALEMITE) 8	1.000 ea
HW4500A17	317400 ALEMITE GREASE RELIEF	1.000 ea
HW4500A20	1/8NPT SL PIPE PLUG	1.000 ea
10XN2520A56	1/4-20X 3 1/2 HEX HD CAP X	2.000 ea
HW1001A25	LOCKWASHER 1/4, ZINC PLT .493 OD, .255 I	2.000 ea
07FH1500A01	DRIP COVER 307 OPEN P-BASE MTRS	1.000 ea
HW3201A10	.38-16 EYEBOLT W/4.50 SHANK	2.000 ea
HW1000A38	WASHER, 3/8" FLAT, SAE Z/P	2.000 ea
10XN3816A44	3/8-16 X 2 3/4 HEX HD CAP SCREW	4.000 ea

HW1001A38	LOCKWASHER 3/8, ZINC PLT .688 OD, .382 I	4.000 ea
09GS1013SP	GS FOR 09CB3501, 12CB1500 & 12CB1503 LID	1.000 ea
51XW2520A12	.25-20 X .75, TAPTITE II, HEX WSHR SLTD	2.000 ea
HW1001A25	LOCKWASHER 1/4, ZINC PLT .493 OD, .255 I	2.000 ea
HW2501E19	STD SQUARE KEY .25 SQUARE X 2.125 LONG	1.000 ea
HA7000A02	KEY RETAINER RING, 1 1/8 DIA, 1 3/8 DIA	1.000 ea
MJ5001A27	32220KN GRAY SEALER *MIN BUY 4 QTS=1GAL	0.001 qt
85XU0407S04	4X1/4 U DRIVE PIN STAINLESS	2.000 ea
LB1386	WARNING LABEL FOR MOTORS WITH EYENUTS	1.000 ea
MJ1000A02	GREASE, POLYREX EM EXXON	0.050 lb
MG1000Y03	MUNSELL 2.53Y 6.70/ 4.60, GLOSS 20,GOLD	0.036 ga
LC0005E01	CONN.DIA./WARNING LABEL (LC0005/LB1119N)	1.000 ea
NP1259L	ALUM SUPER-E UL CC NEMA PREMIUM A60	1.000 ea
07PA1107	PKG GRP, PRINT PK1181A06	1.000 ea
10XL3808A28	3/8 X 1 3/4" LAG SCREW	2.000 ea
MN416A01	TAG-INSTAL-MAINT no wire (2500bx)4/22	1.000 ea

AC Induction Motor Performance Data

Record # 56429

Typical performance - not guaranteed values

Winding: 07WGR866-R001		Type: 0740M		Enclosure: ODP	
Nameplate Data			460 V, 60 Hz: High Voltage Connection		
Rated Output (HP)	7.5	Full Load Torque	22.1 LB-FT		
Volts	230/460	Start Configuration	direct on line		
Full Load Amps	21.6/10.8	Breakdown Torque	110 LB-FT		
R.P.M.	1770	Pull-up Torque	47.5 LB-FT		
Hz	60 Phase	3	Locked-rotor Torque	72.9 LB-FT	
NEMA Design Code	A KVA Code	K	Starting Current	113 A	
Service Factor (S.F.)	1.15		No-load Current	7.78 A	
NEMA Nom. Eff.	91 Power Factor	71	Line-line Res. @ 25°C	0.97872 Ω	
Rating - Duty	40C AMB-CONT		Temp. Rise @ Rated Load	36°C	
S.F. Amps			Temp. Rise @ S.F. Load	41°C	

Load Characteristics 460 V, 60 Hz, 7.5 HP

% of Rated Load	25	50	75	100	125	150	S.F.
Power Factor	27	45	58	67	72	77	70
Efficiency	79.7	87.5	90.1	91.1	91.3	91.2	91.2
Speed	1794.4	1790.2	1785.6	1780.7	1775.9	1770.5	1778
Line amperes	8.07	8.89	10.1	11.6	13.2	15	12.6

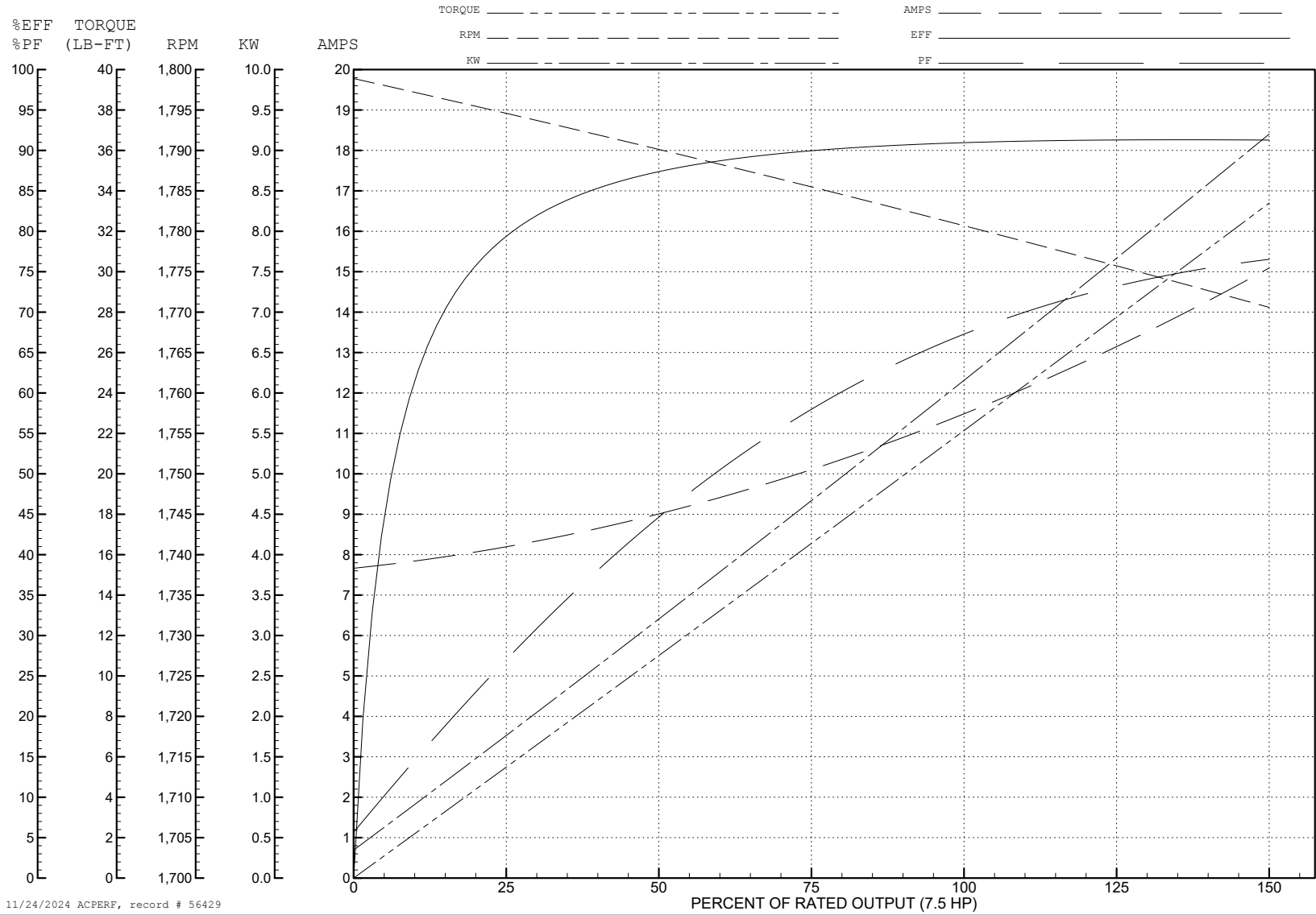
ABB Motors and Mechanical Inc.

WINDING # 07WGR866

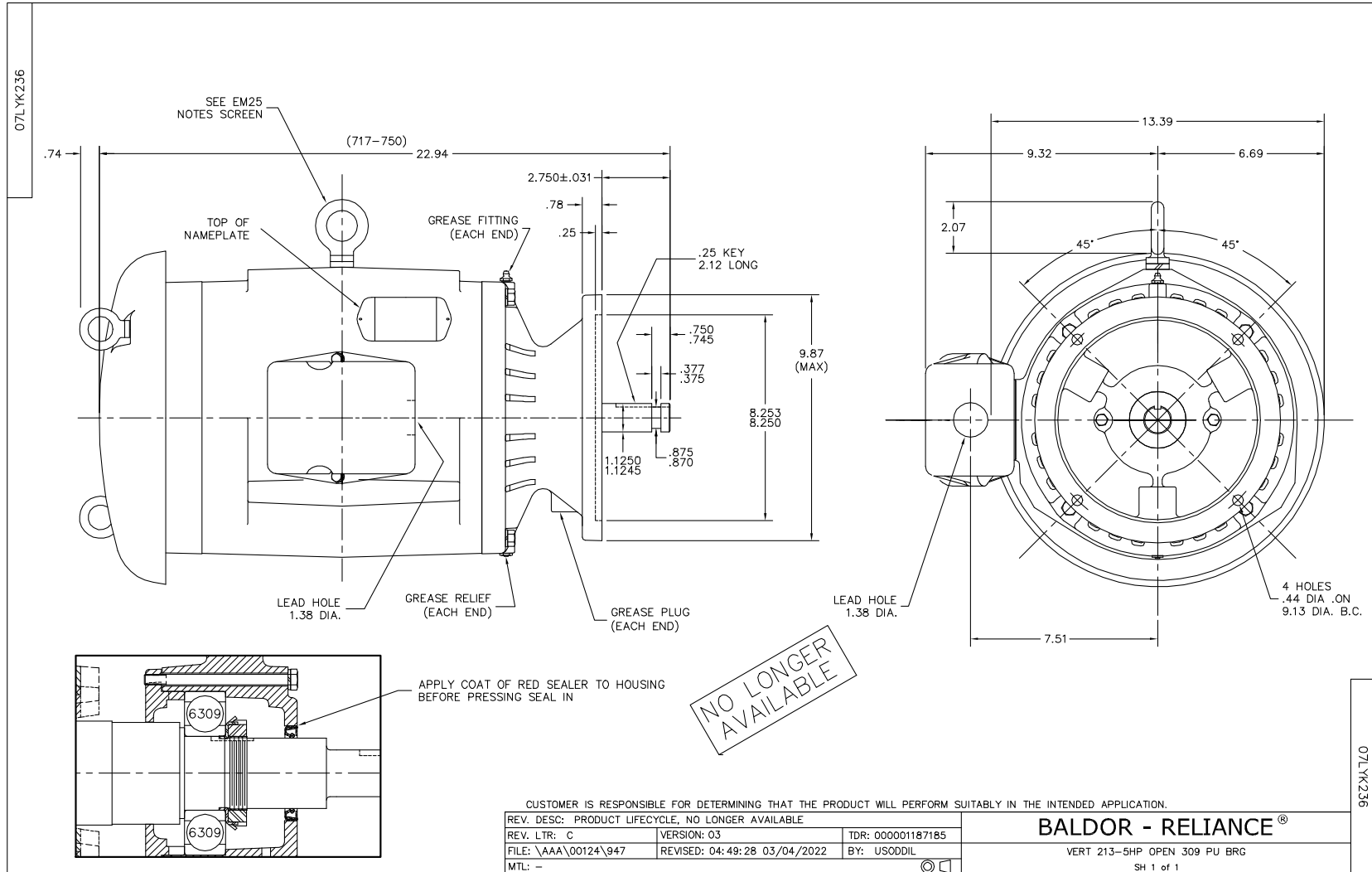
7.5 HP 3 PH 60 HZ 1770 RPM 460 V 0740M

Typical performance - not guaranteed values.

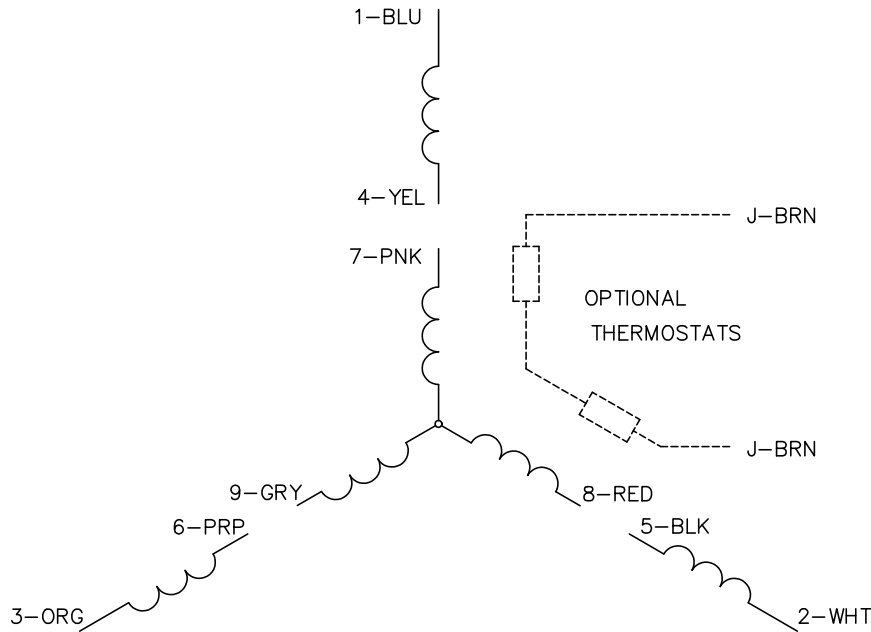
TORQUES (LB-FT): PO=110 PU=47.5 LR=72.9 LRA=113



11/24/2024 ACPERF, record # 56429



CD0005



LOW VOLTAGE
(2Y)



LINE

HIGH VOLTAGE
(1Y)



LINE

NOTES:

1. INTERCHANGE ANY TWO LINE LEADS TO REVERSE ROTATION.
2. OPTIONAL THERMOSTATS ARE PROVIDED WHEN SPECIFIED.
3. ACTUAL NUMBER OF INTERNAL PARALLEL CIRCUITS MAY BE A MULTIPLE OF THOSE SHOWN ABOVE.
4. LEAD COLORS ARE OPTIONAL. LEADS MUST ALWAYS BE NUMBERED AS SHOWN.

CD0005

REV. DESC: REVISE TO SHOW OPTIONAL COLORS			
REV. LTR: E	BY: JLP	REVISED: 01/19/99 10:15	TDR: 0171435
S00000		FILE: AAA00005140	MDL: -
		MTL: -	

BALDOR ELECTRIC Co.

3PH, DV, 9 LEADS